

**SIRUBA**

**PARTS LIST**

**Series**

**VC008B**

**Parts Group**

**VA**

**Subclass / Remark**

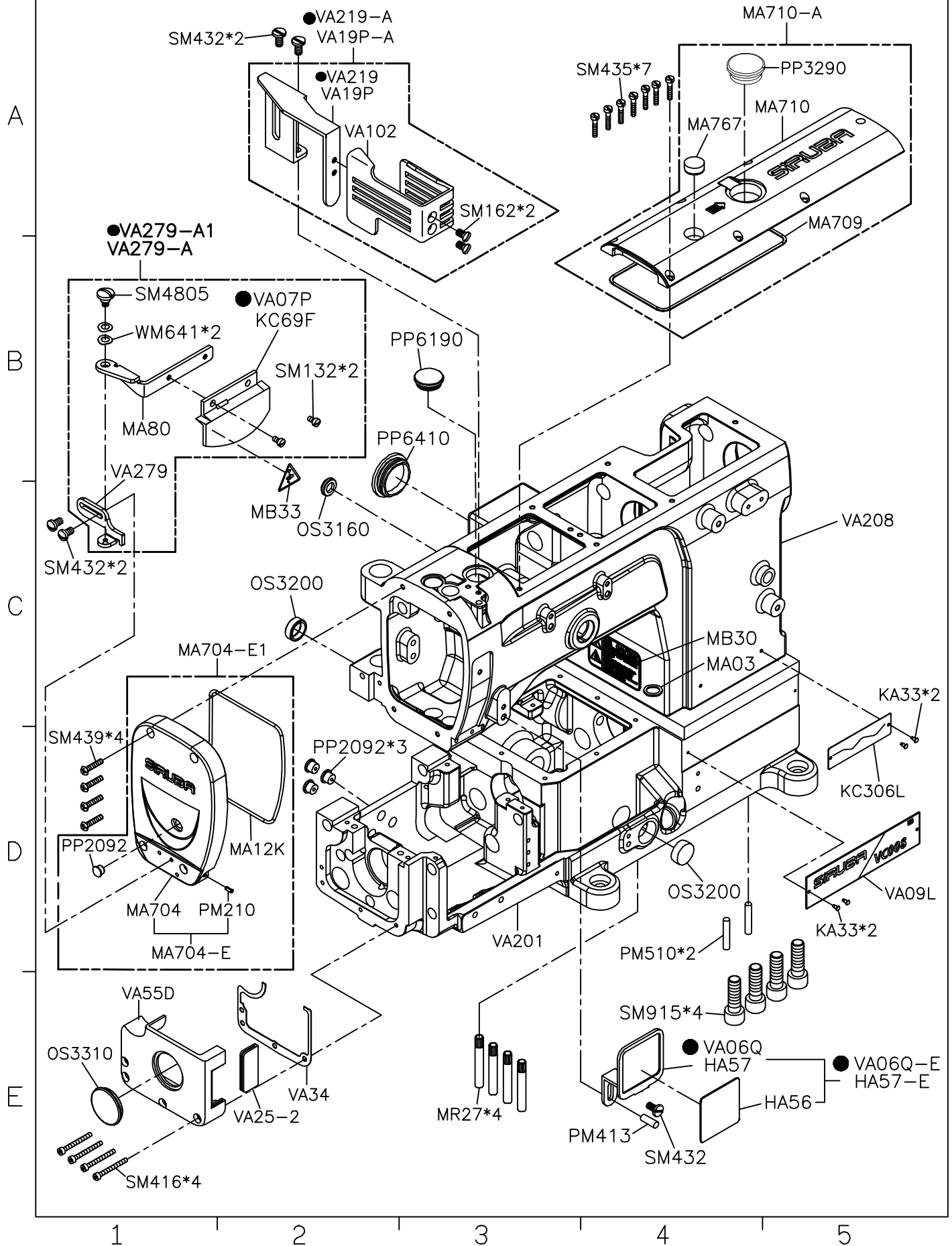
● FOR 12 NEEDLE

**Page**

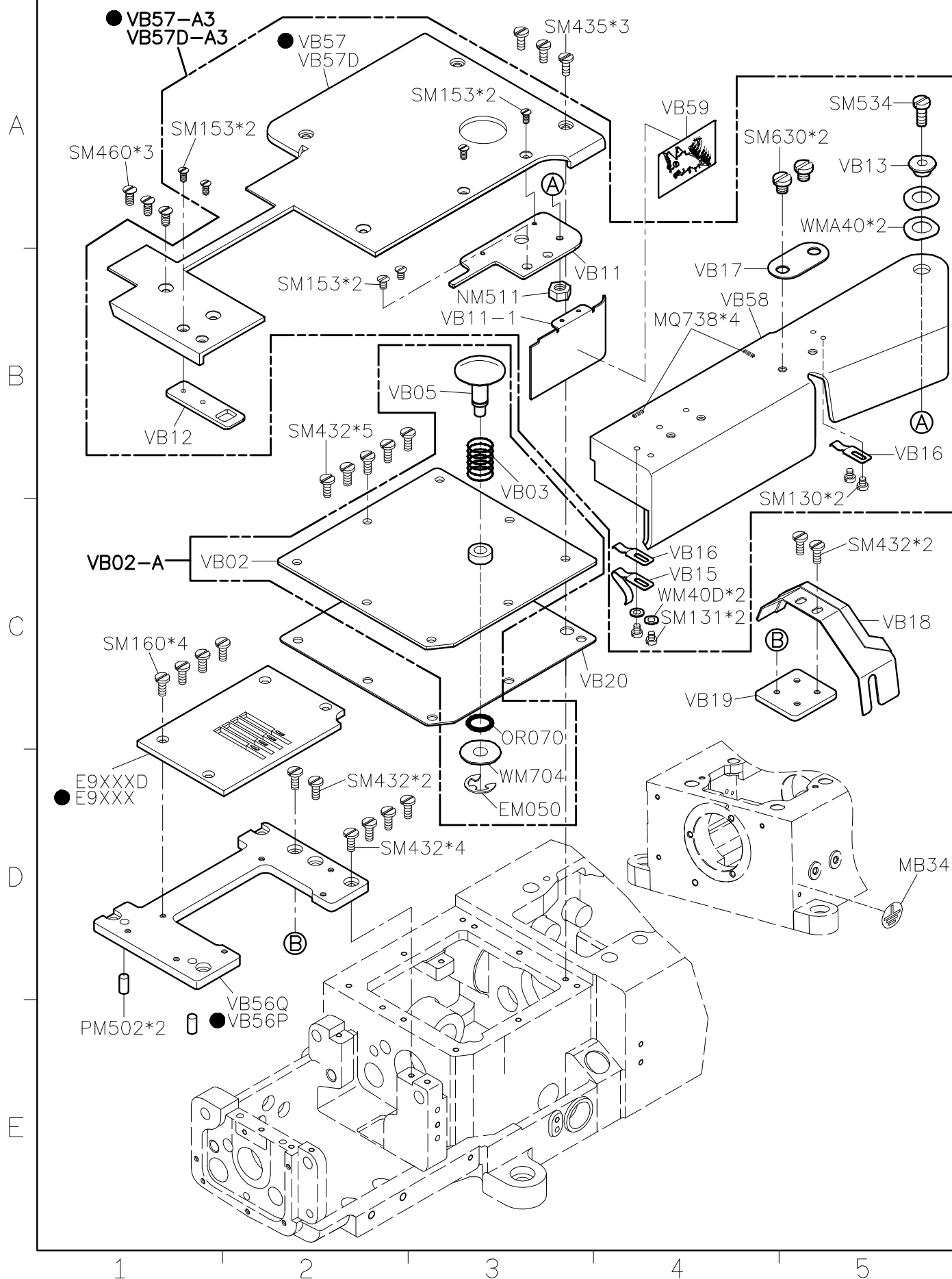
1/1

**Date**

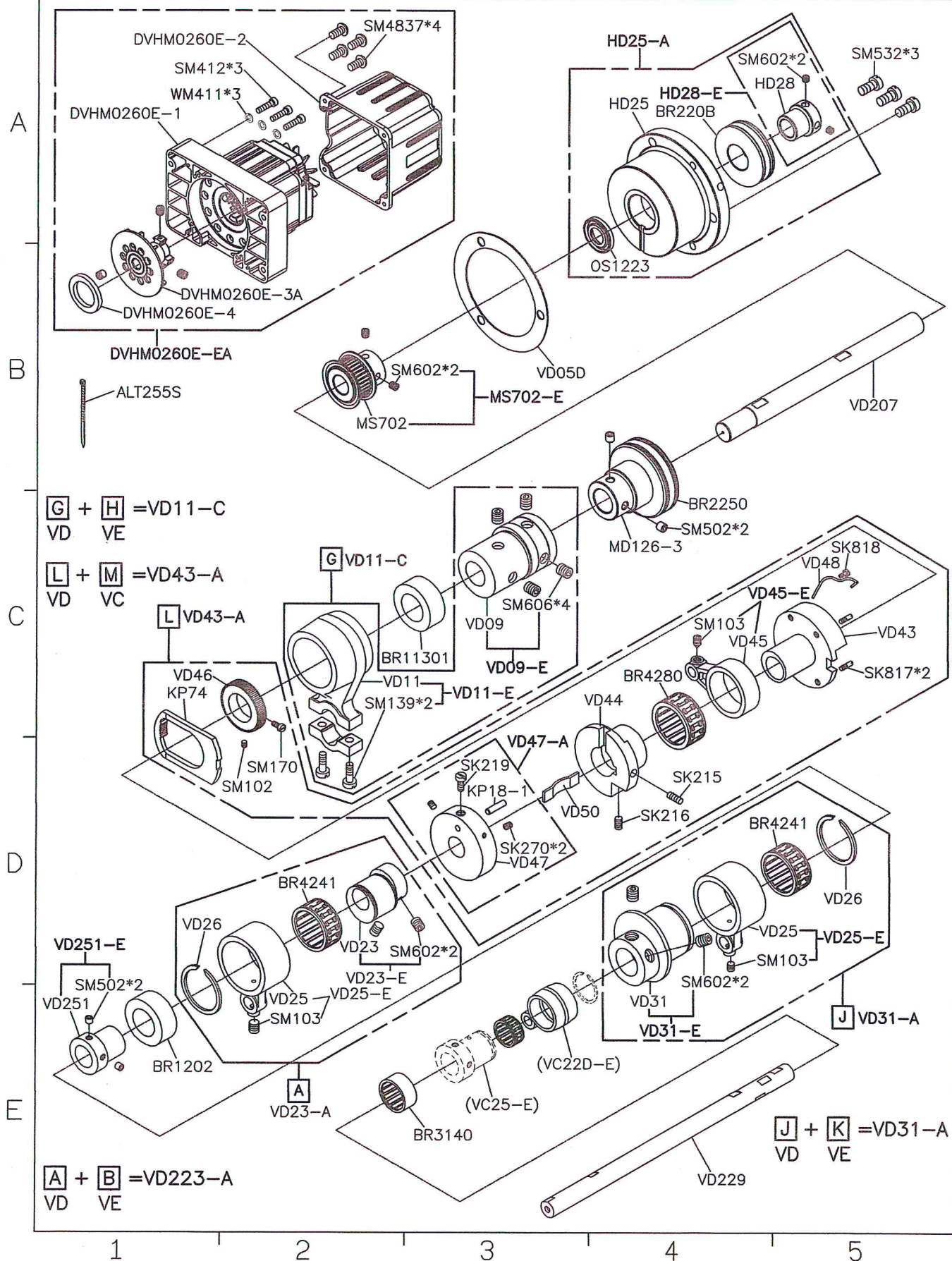
2022/08/22



SIRUBA PARTS LIST	Series	Parts Group	Subclass / Remark	Page
	VC008B	VB	● FOR 12 NEEDLE	1/1
				Date
				2020/05/18



[illegible]





**SIRUBA**

PARTS LIST

Series

**VC008B**

Parts Group

**VD**

Subclass / Remark

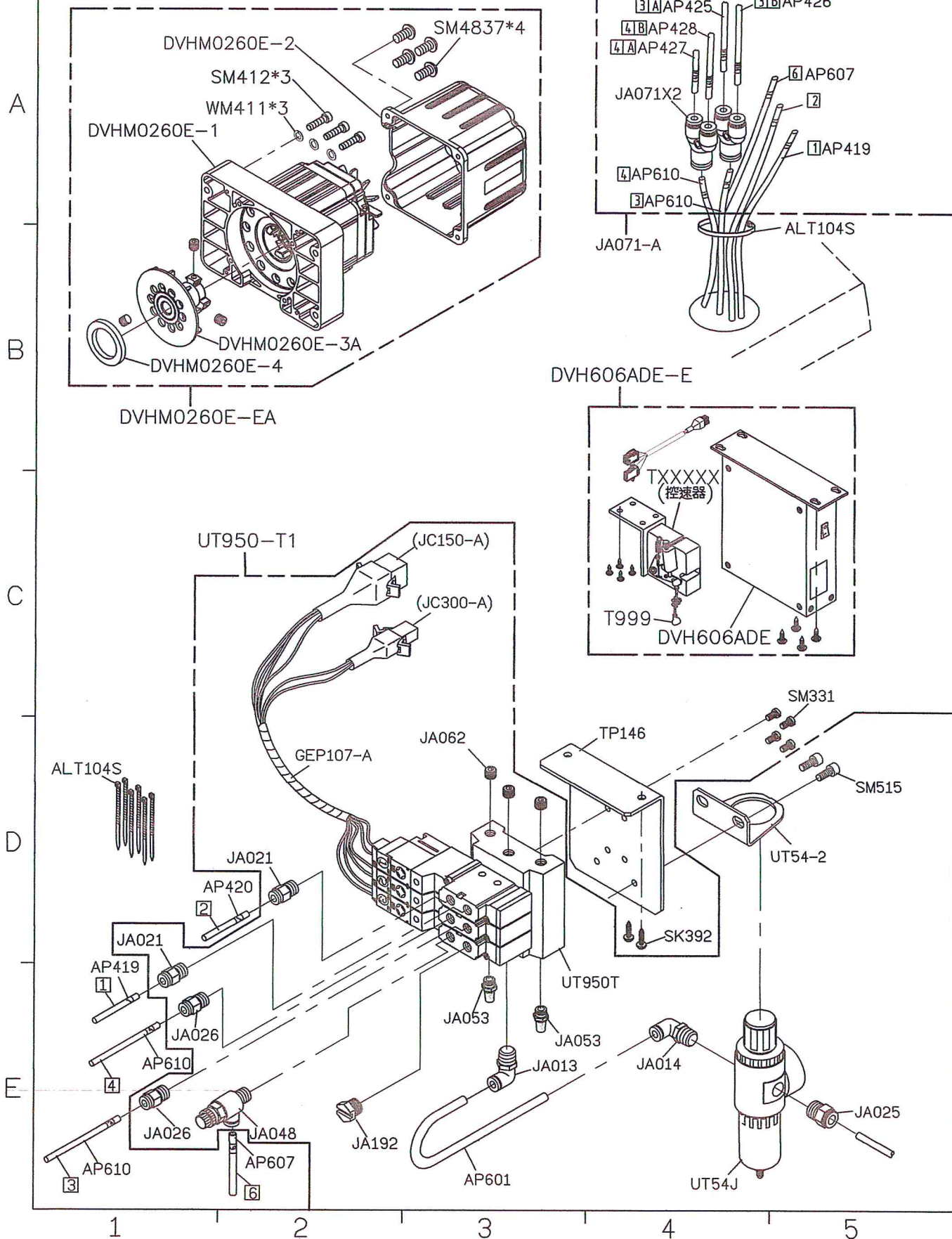
賀欣直驅馬達  
FOR VUT

Page

2/3

Date

2022/09/09



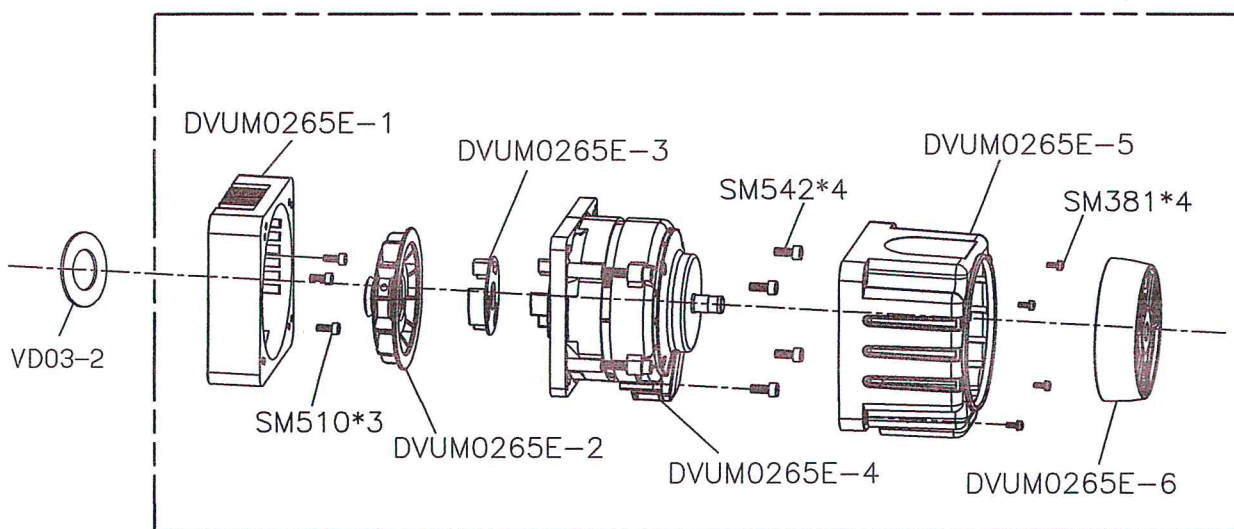
A

B

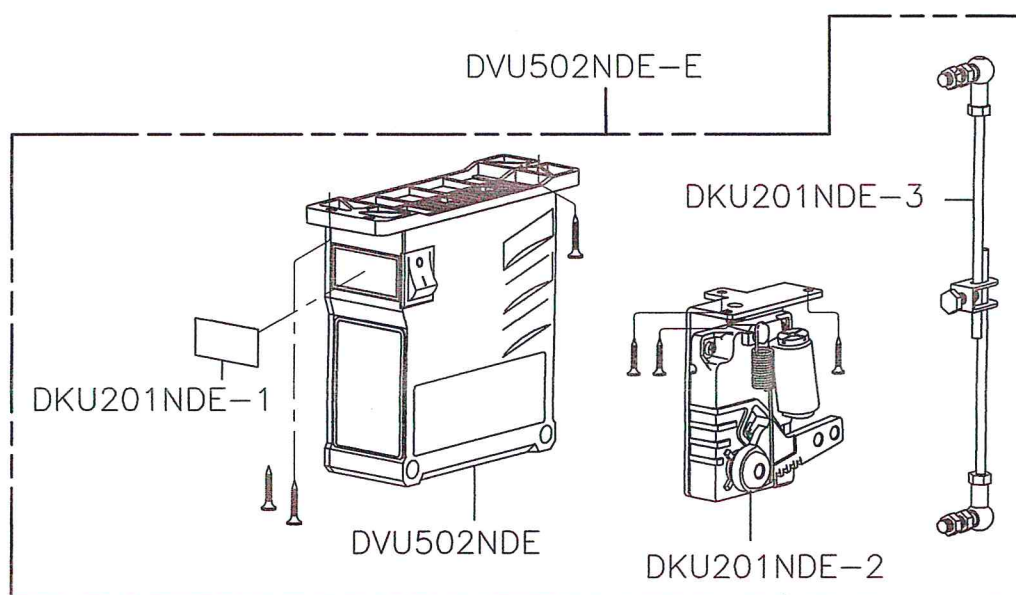
C

D

E



DVUM0265E-E



DVU502NDE-E

DKU201NDE-1

DVU502NDE

DKU201NDE-2

DKU201NDE-3

1

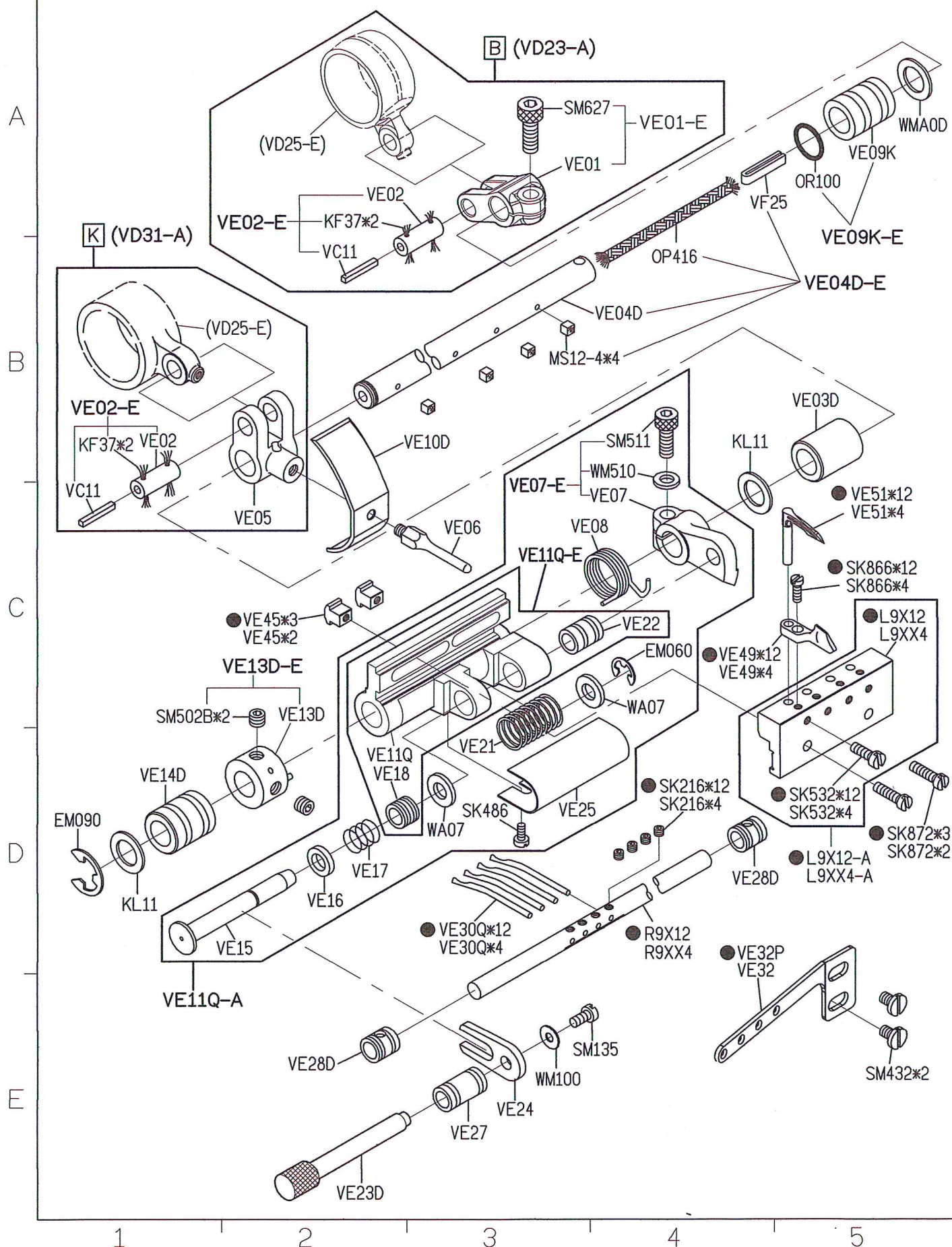
2

3

4

5





SIRUBA PARTS LIST	Series	Parts Group	Subclass / Remark	Page
	VC008B	VE		2/2
				Date
				2022/09/09

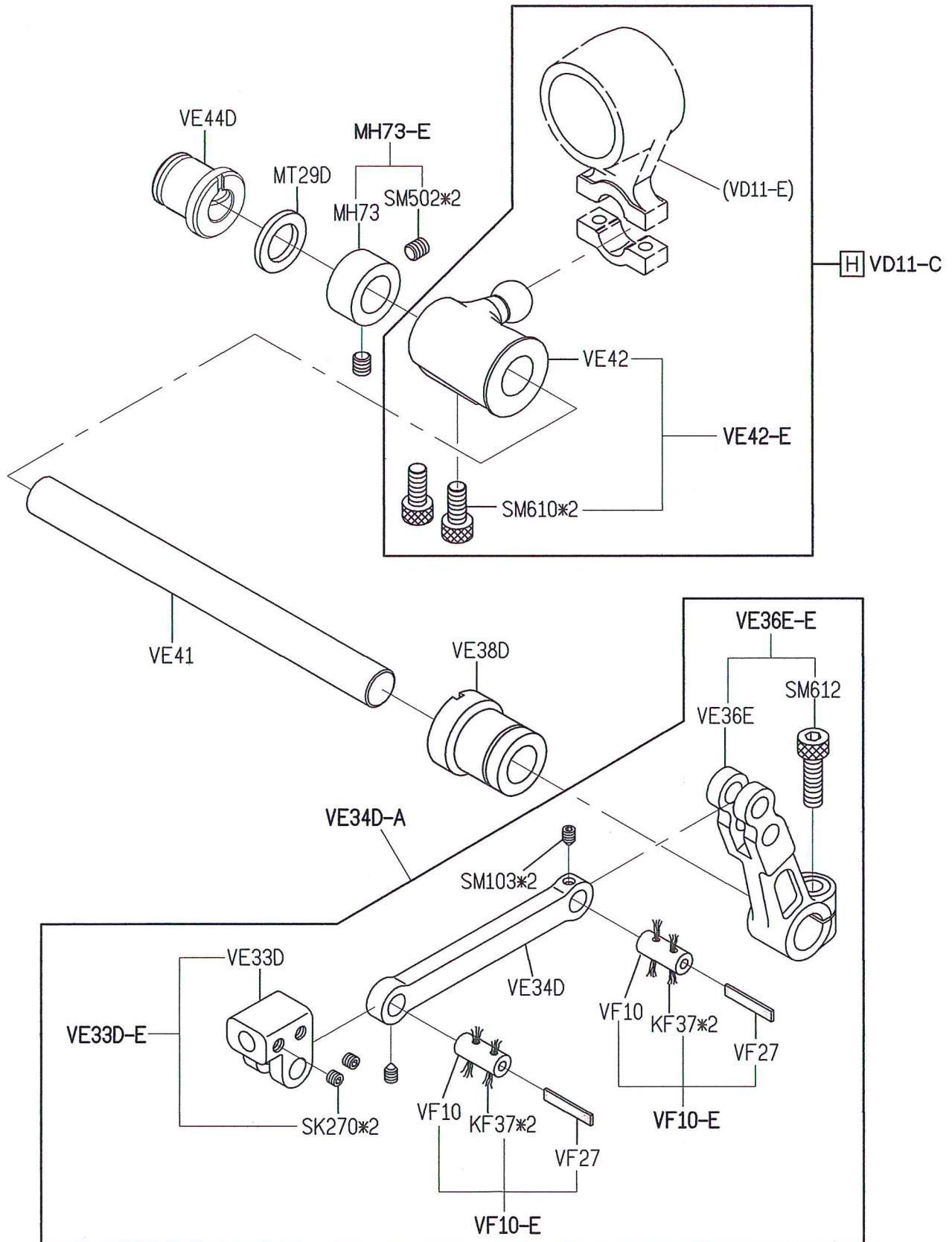
A

B

C

D

E



1

2

3

4

5



SIRUBA PARTS LIST	Series	Parts Group	Subclass / Remark	Page
	VC008B	VF	△ CL701-E需再和 CL02, BR4243選配	1/3
				Date 2023/05/25

[R] + [S] = MF707-C2  
VF VF

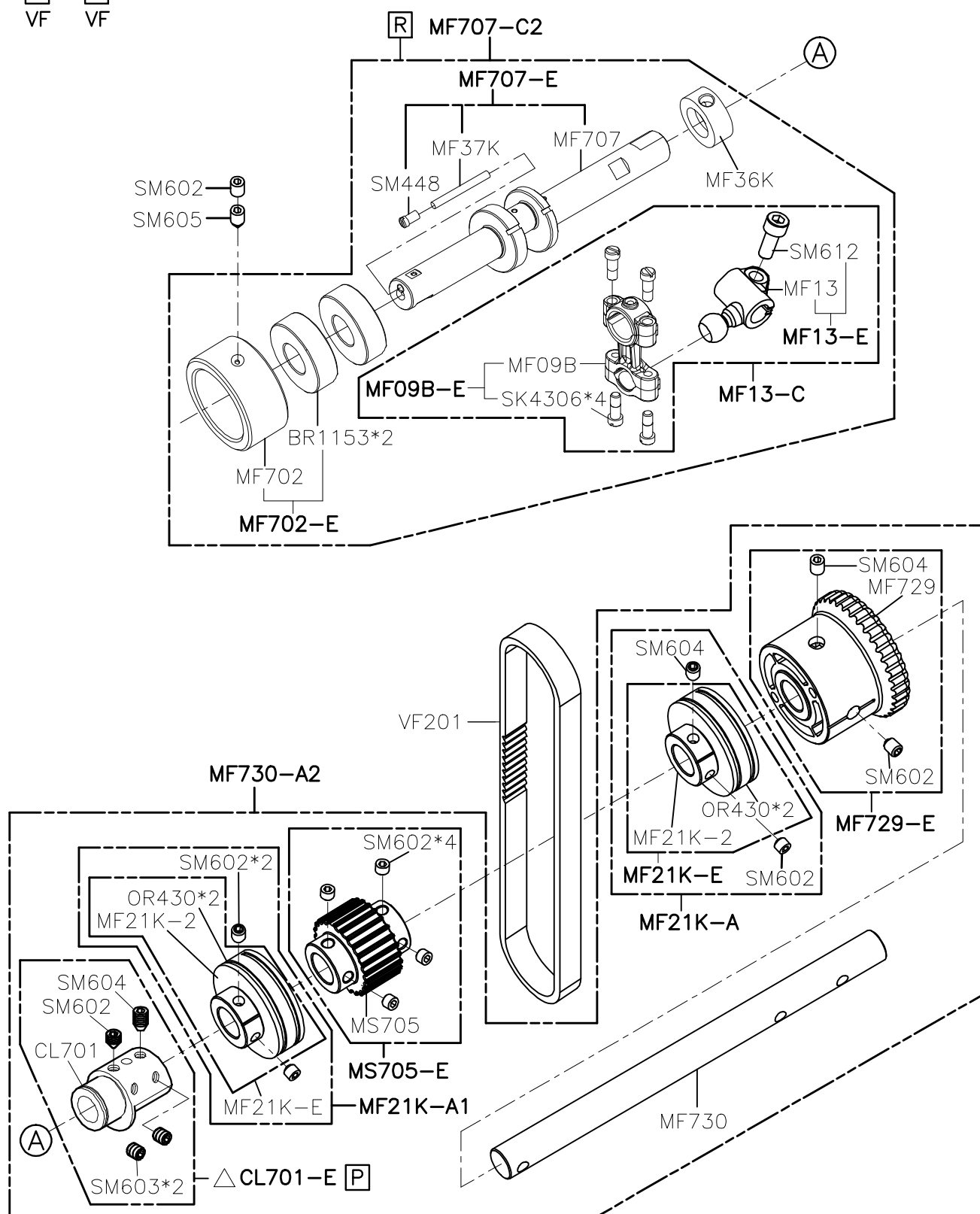
A

B

C

D

E



[P] + [Q] = CL701-C  
VF VCL

1

2

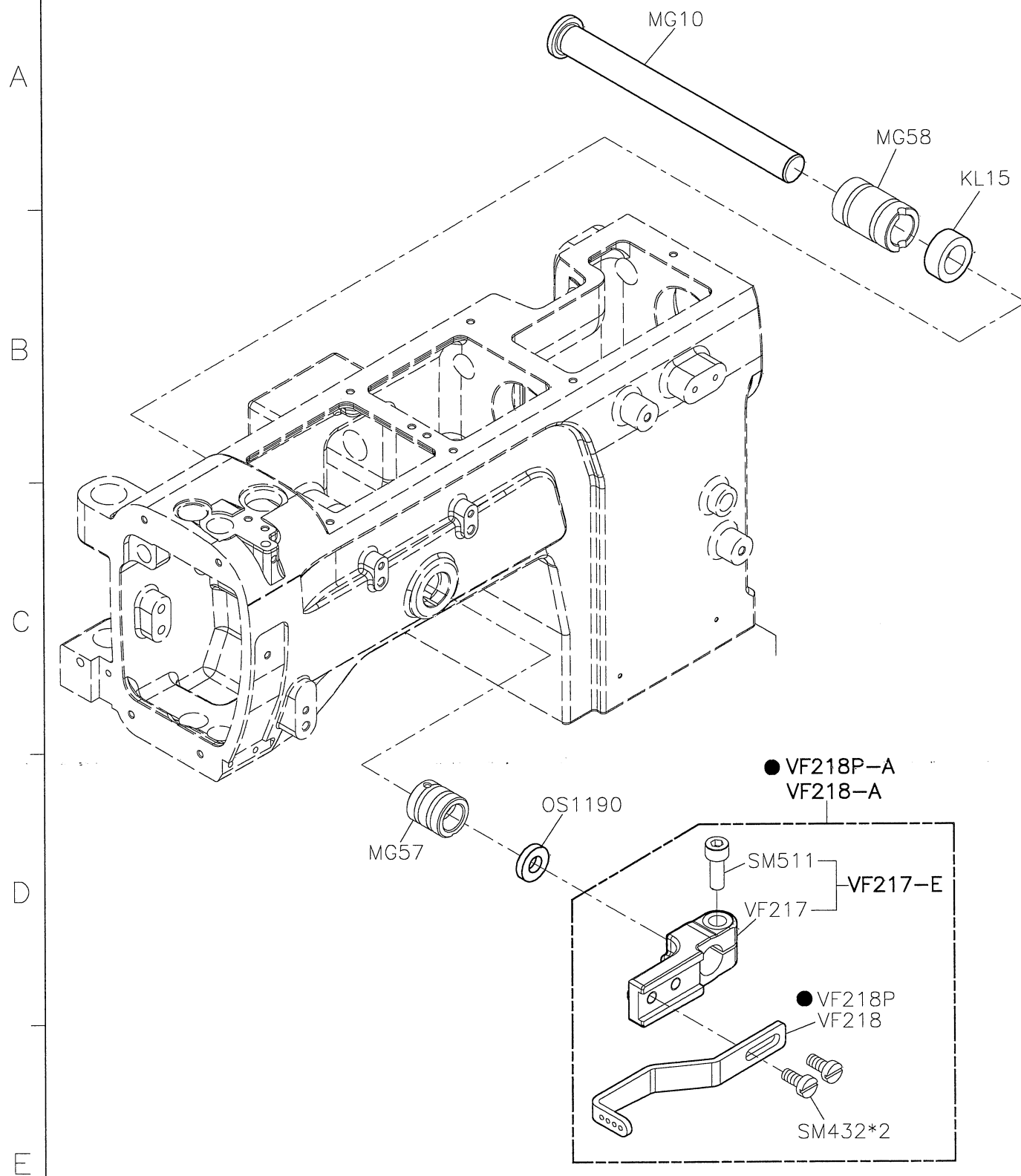
3

4

5

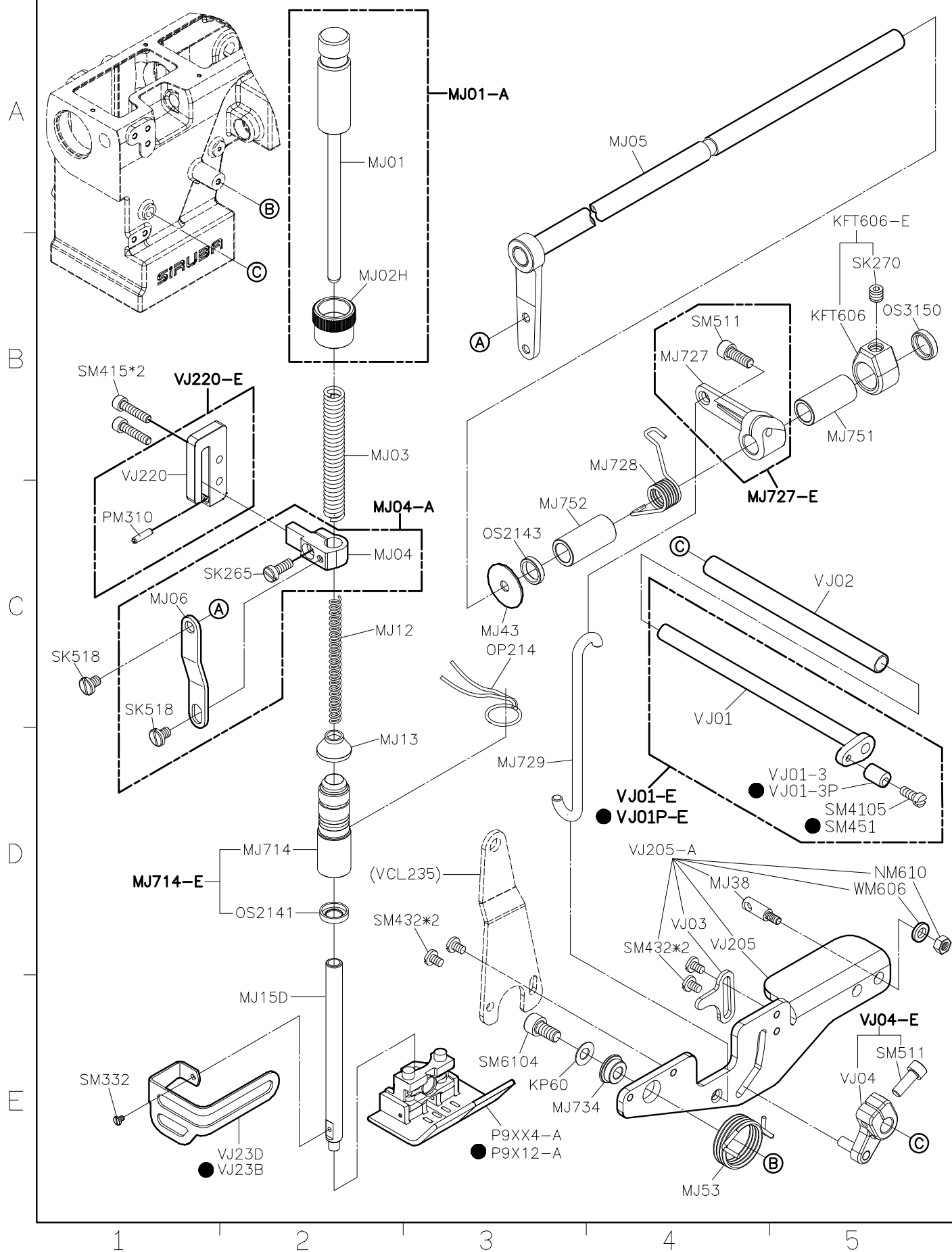


<div>SIRUBA</div> <div>PARTS LIST</div>	Series	Parts Group	Subclass / Remark	Page
	VC008B	VF	● FOR 12 NEEDLE	3/3
				Date
				2019/11/28

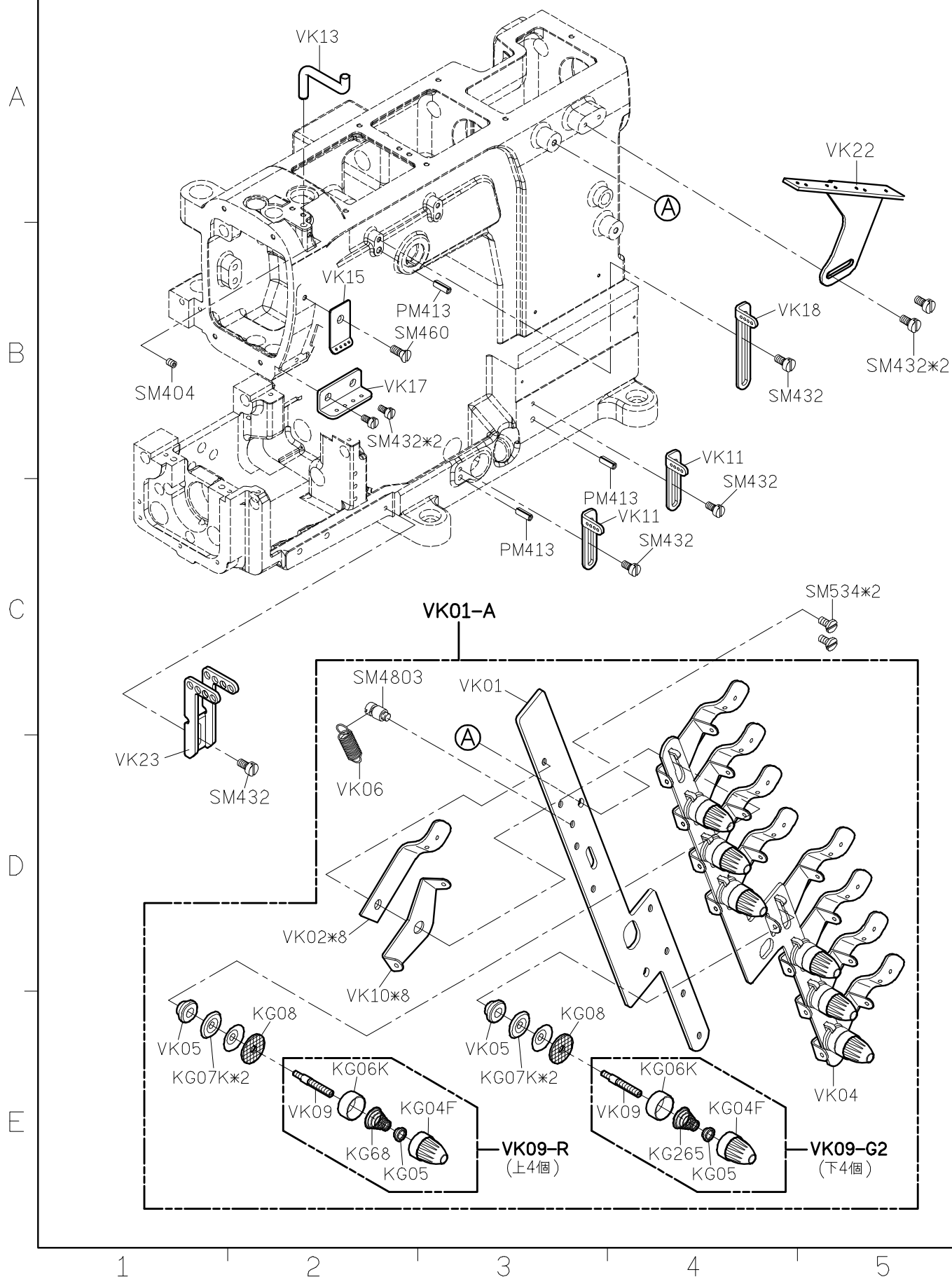




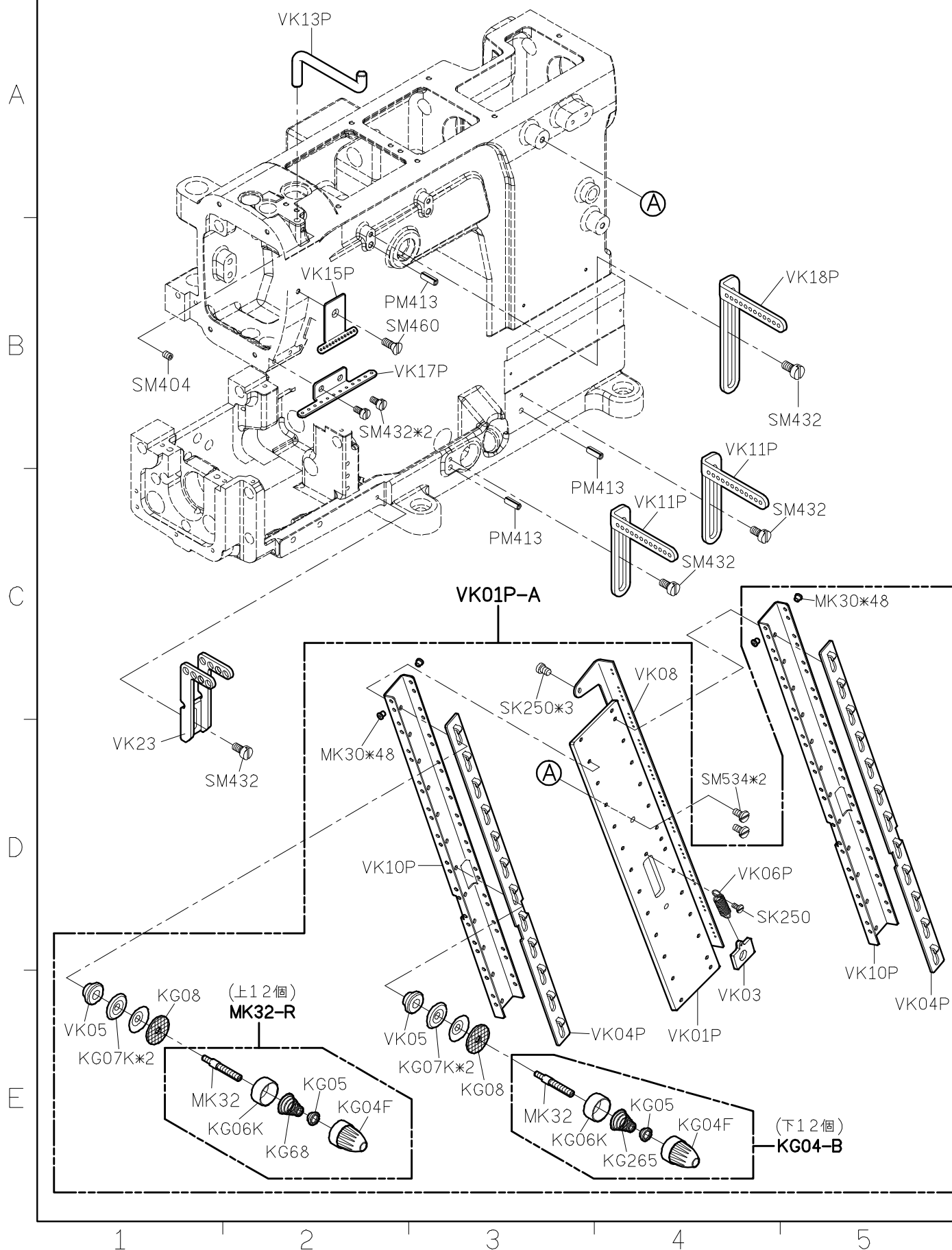
SIRUBA PARTS LIST	Series	Parts Group	Subclass / Remark	Page
	VC008B	VJ	● FOR 12 NEEDLE	1/1
				Date
				2020/05/18



SIRUBA PARTS LIST	Series	Parts Group	Subclass / Remark	Page
	VC008B	VK	FOR 4 NEEDLE	1/2
				Date
				2020/05/18

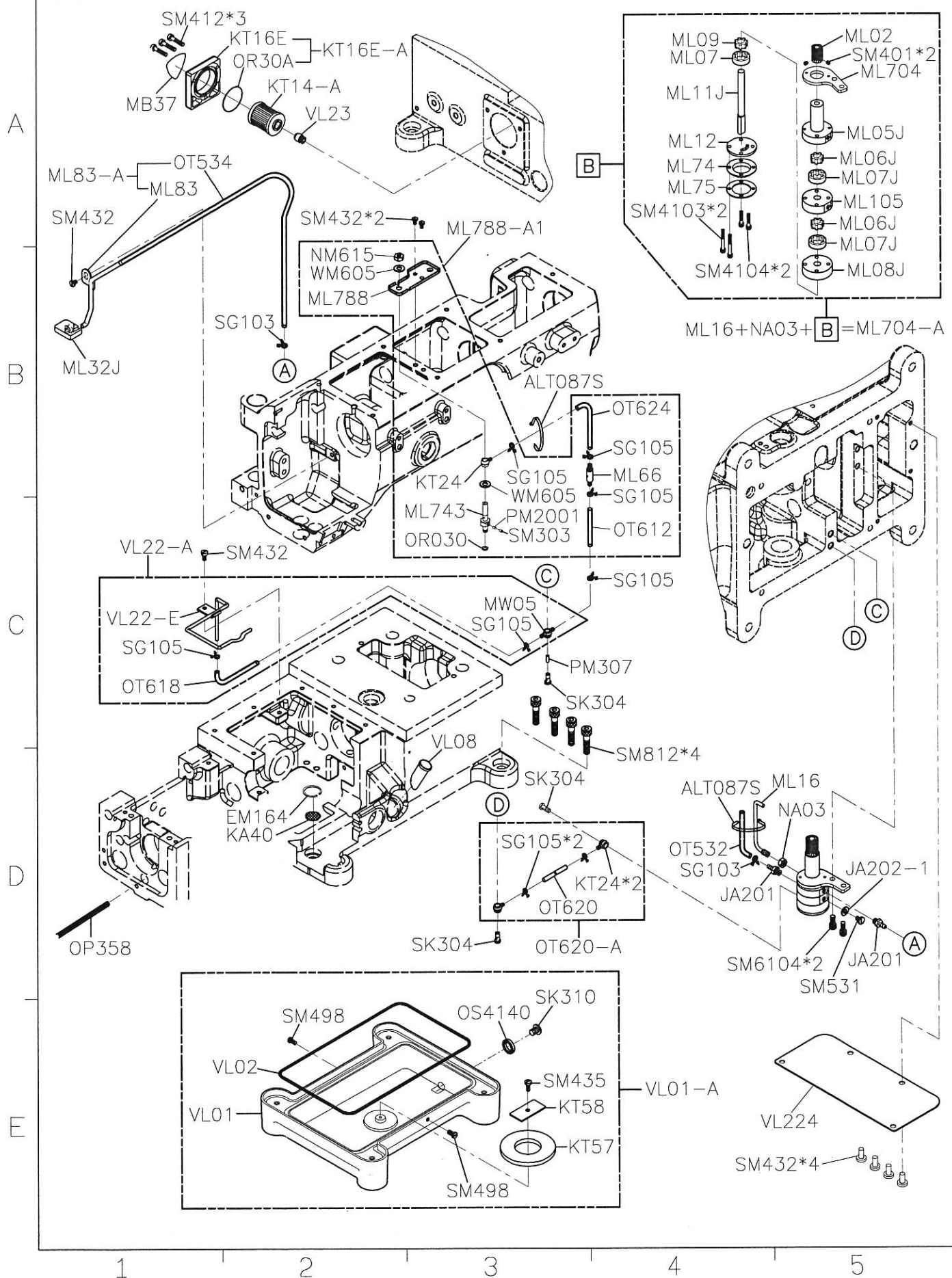


SIRUBA PARTS LIST	Series	Parts Group	Subclass / Remark	Page
	VC008B	VK	FOR 12 NEEDLE	2/2
				Date
				2020/05/18

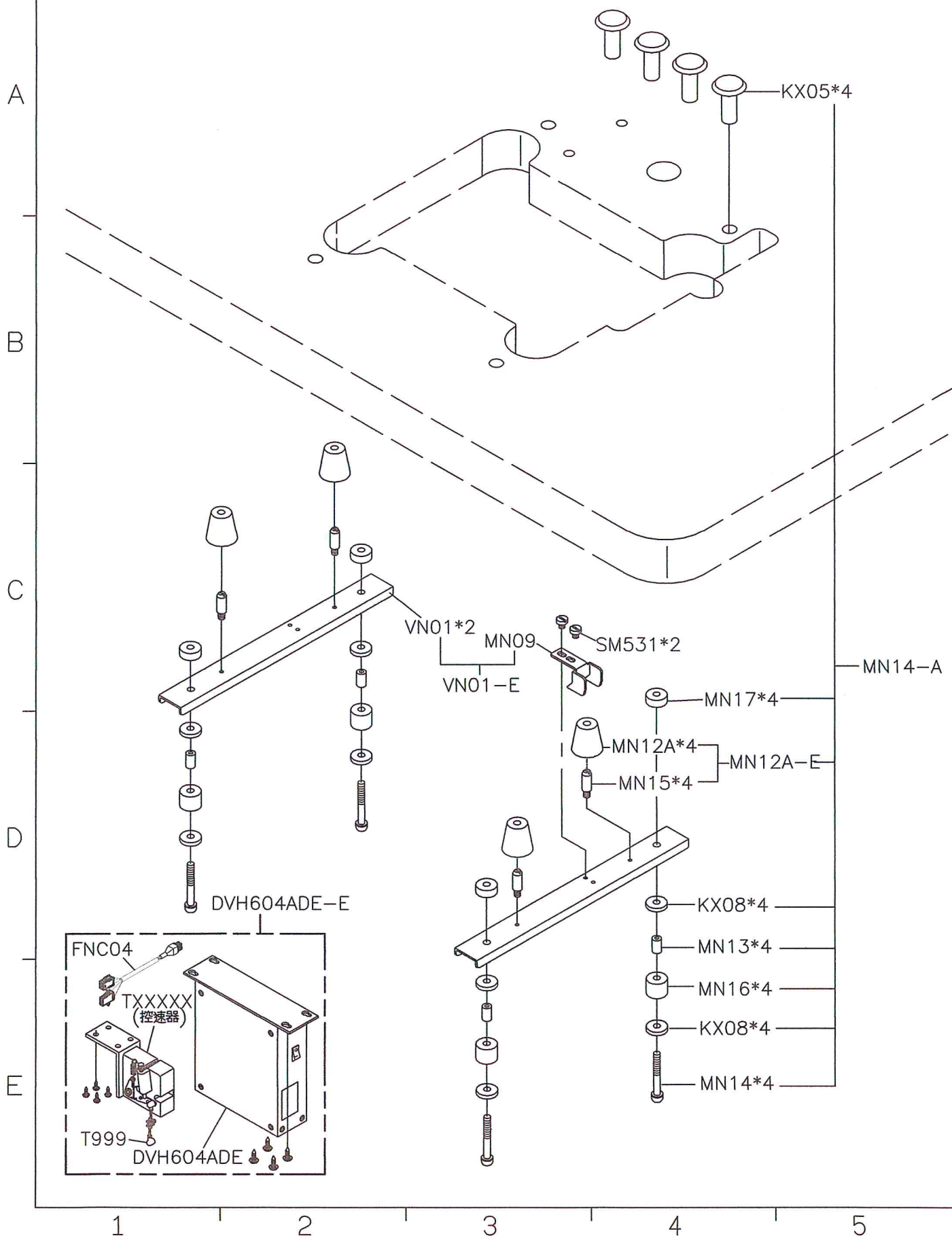




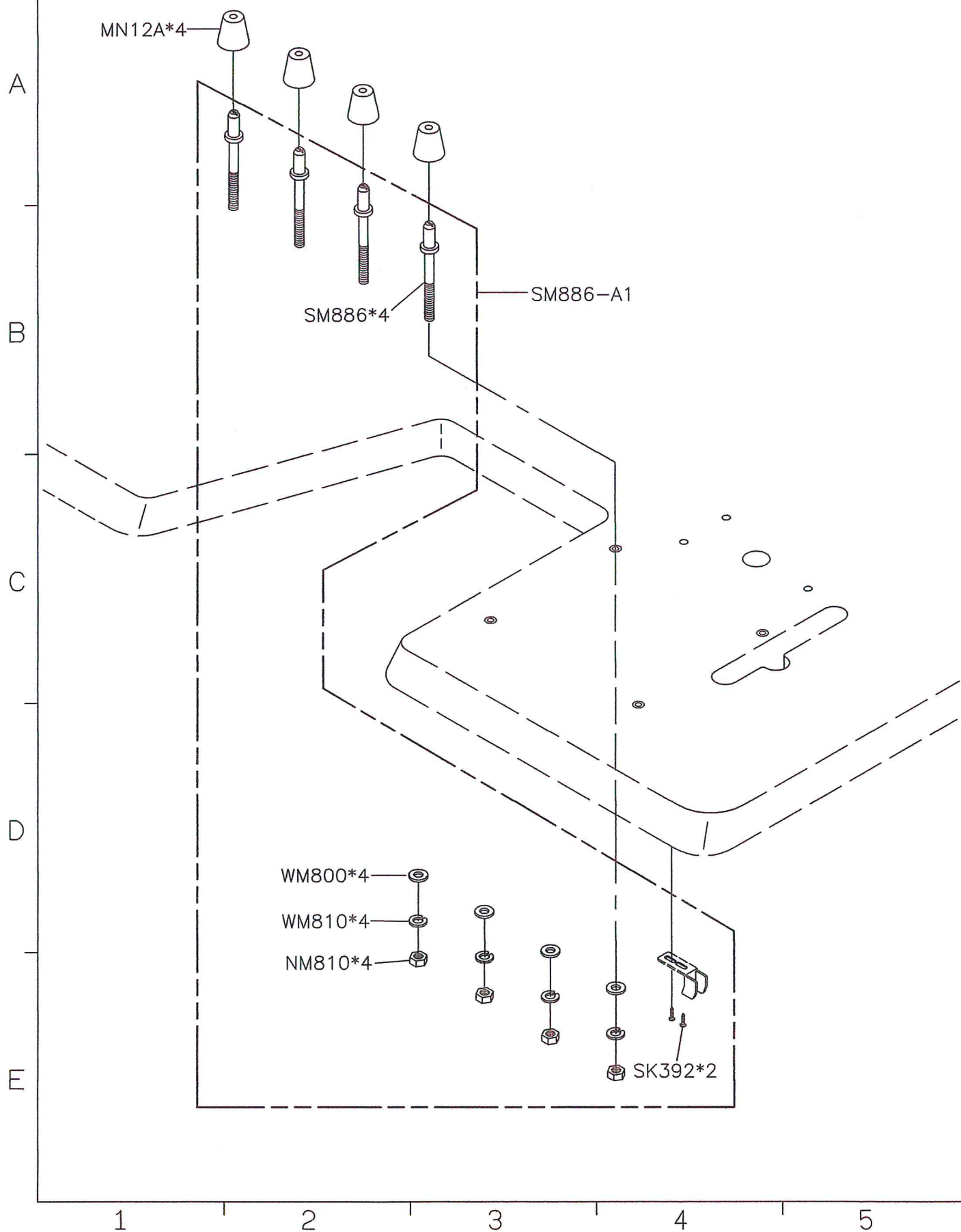
SIRUBA PARTS LIST	Series	Parts Group	Subclass Remark	Page
	VC008B	VL		1/1
				Date
				2021/08/05



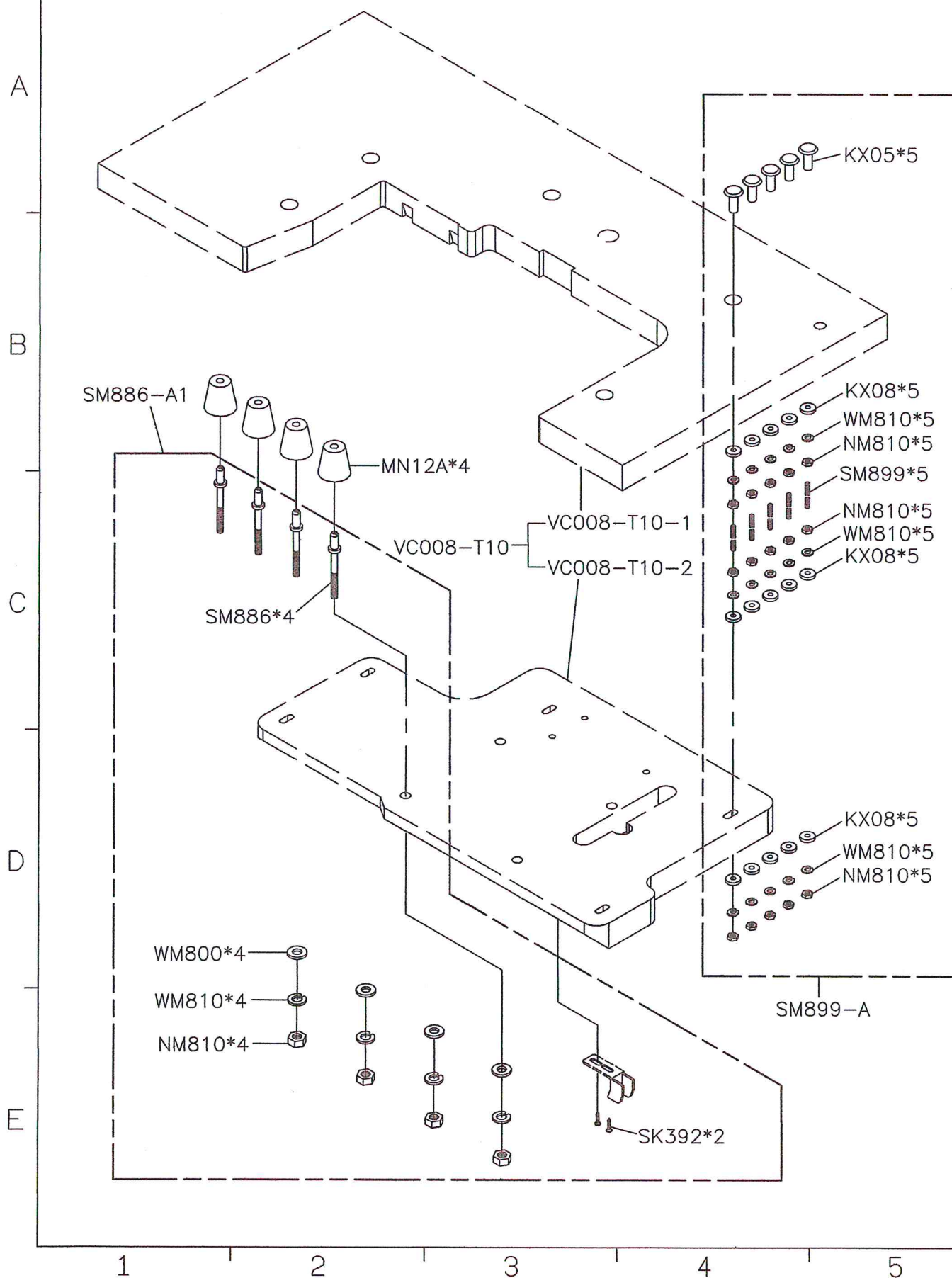
<b>SIRUBA</b>  PARTS LIST	Series	Parts Group	Subclass / Remark	Page
	VC008B	VN	Use for 半沉式桌板	1/3
				Date
				2022/11/04



SIRUBA PARTS LIST	Series	Parts Group	Subclass / Remark	Page
	VC008B	VN	Use for 上乘式桌板	2/3
				Date
				2022/11/04

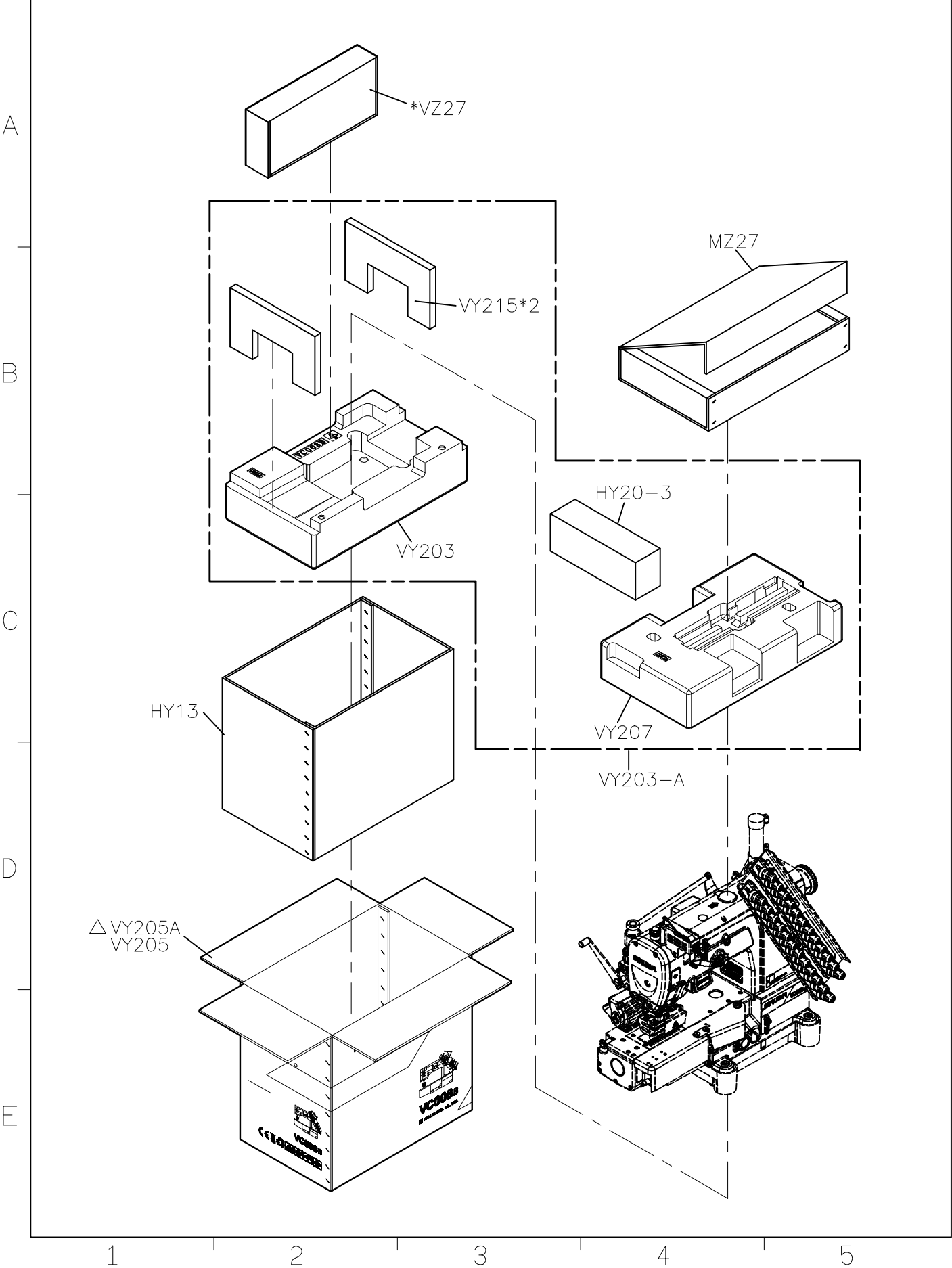








SIRUBA PARTS LIST	Series	Parts Group	Subclass / Remark	Page
	VC008B	VY	△ 大陸地區內銷用 *直驅車	2/2
				Date
				2024/01/22





SIRUBA PARTS LIST	Series	Parts Group	Subclass / Remark	Page
	VC008B	VZ	OPTION:VZ02-A (4 NEEDLE USE)	1/2
				Date
				2019/11/18

**Section A:** Components include NK52\*6, KW26K\*2, SM5811\*6, VZ02\*2, KW36B, SM606\*4, KW32E\*8, and KW28K.

**Section B:** Components include VZ03\*6, WM601\*6, WM610\*6, SM621\*6, KW01E, SM4654, SM4655, KW14E, and NK29B\*2.

**Section C:** Components include KW17B, KW03E, VZ01, KW20E, SM4655\*2, NK29B\*2, and NK29B.

**Section D:** Components include SM4656, SK422, KW22, KW13E\*8, KW09B\*8, KW16\*8, KW12E\*8, and KW04K\*2.

**Section E:** Components include KW02E, WK25B\*2, WMG10, NK30B, KW29K, WM410\*8, and NK29B\*8.

**Assembly Points:** A, B, C, D, E, F

**SIRUBA**

**PARTS LIST**

Series

**VC008B**

Parts Group

**VZ**

Subclass / Remark

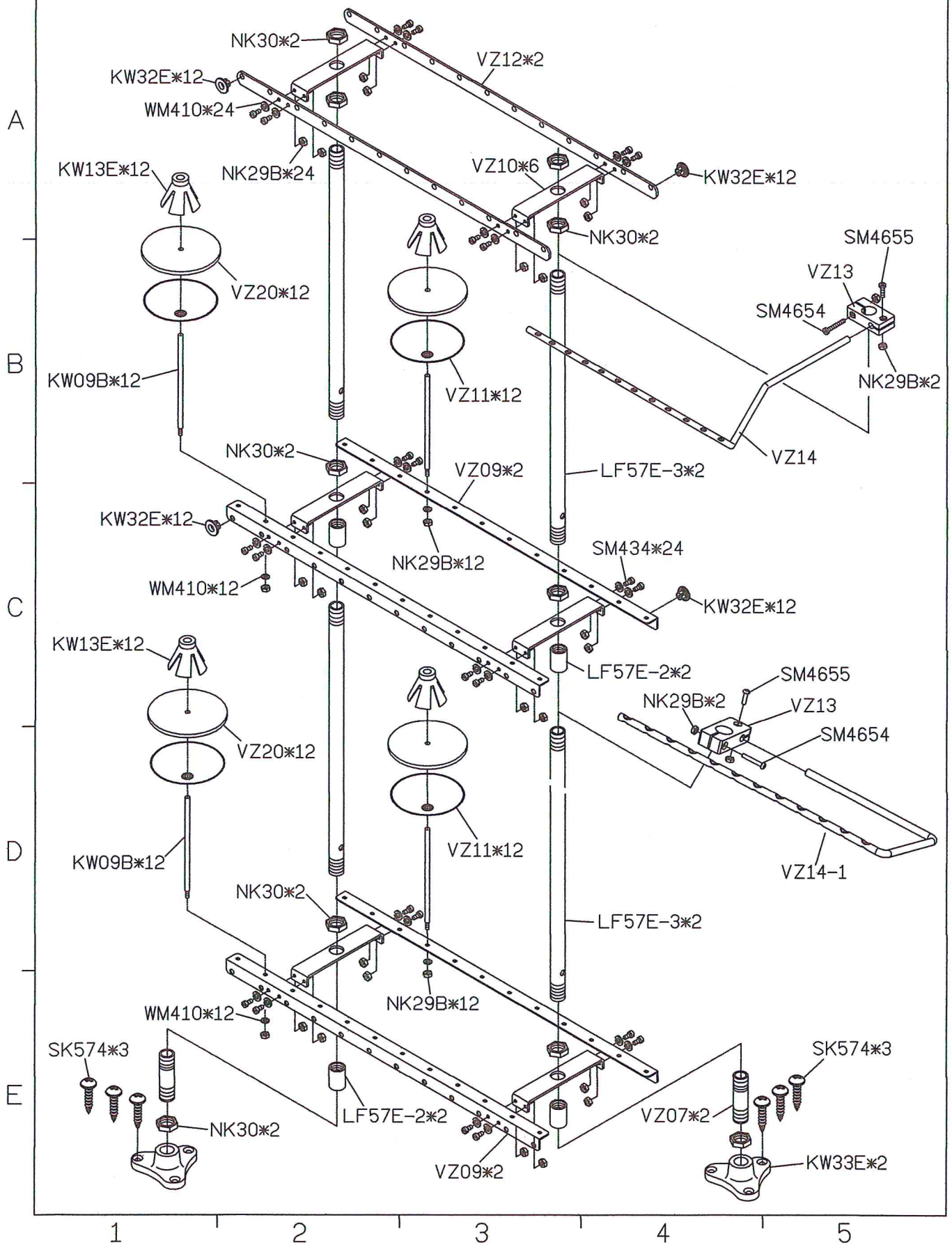
OPTION:VZ09-A  
(6~12 NEEDLE USE)

Page

2/2

Date

2022/08/24



SIRUBA	Series	Item Code	Subclass Remark	Mounting
TABLE CUT - OUT	VC008	VC008-T1	For VC008(A , B)-04 VC008(A , B)-04P/VCE VC008(A , B)-04P/VJT VC008(A , B)-04P/VSF	Semi-submerged
	VC008A			Date
	VC008B			2019/11/06

Unit / UNIT:mm  
Tolerance: ±2  
Length (L): 1070 / Weight (W): 11.6kg ±5%  
Length (L): 1200 / Weight (W): 12.6kg ±5%

單位 / UNIT:mm  
所有尺寸公差 / TOLERANCE: ±2  
長度 (L): 1070 / 重量 (W): 11.6kg ±5%  
長度 (L): 1200 / 重量 (W): 12.6kg ±5%

