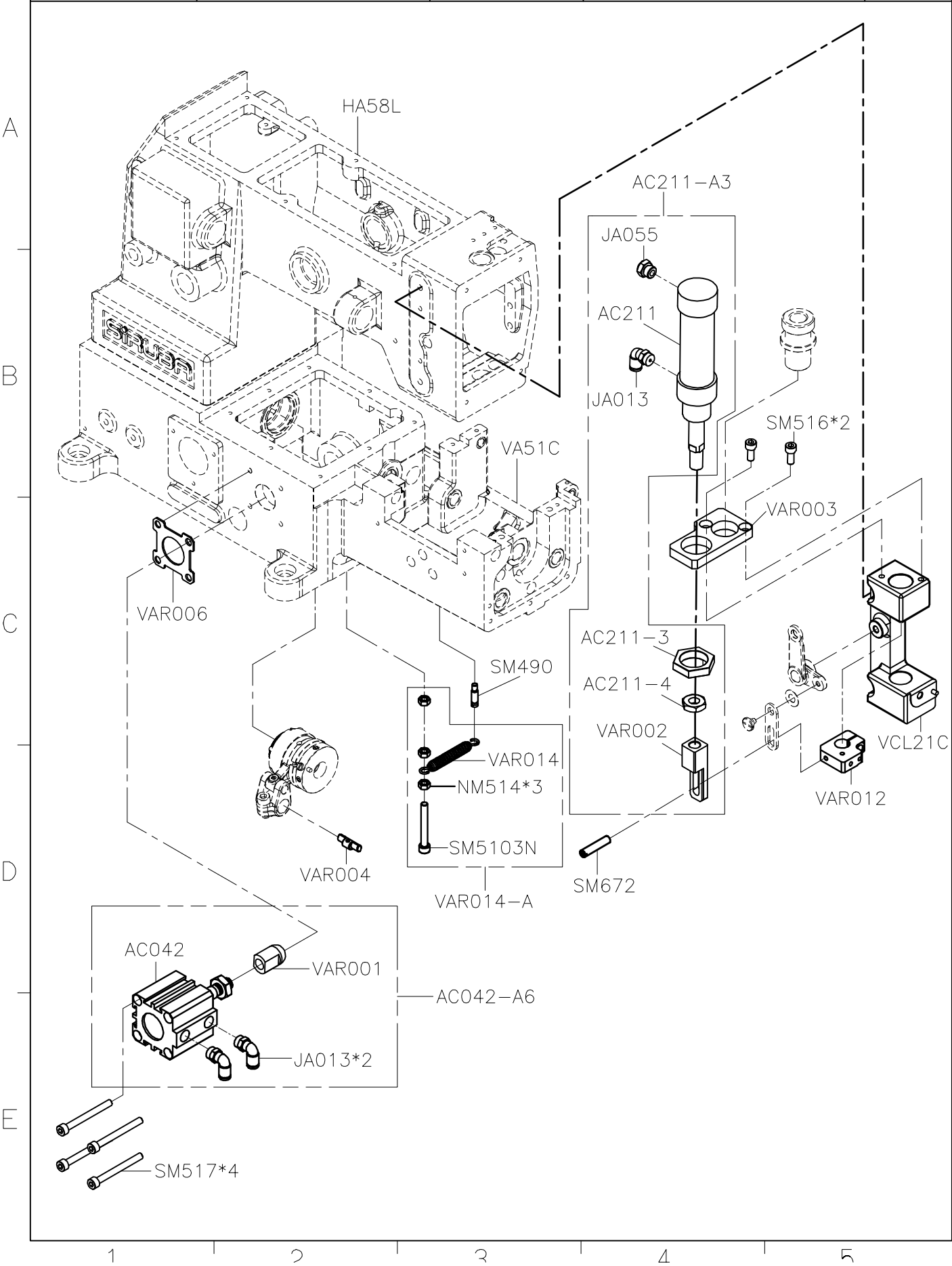
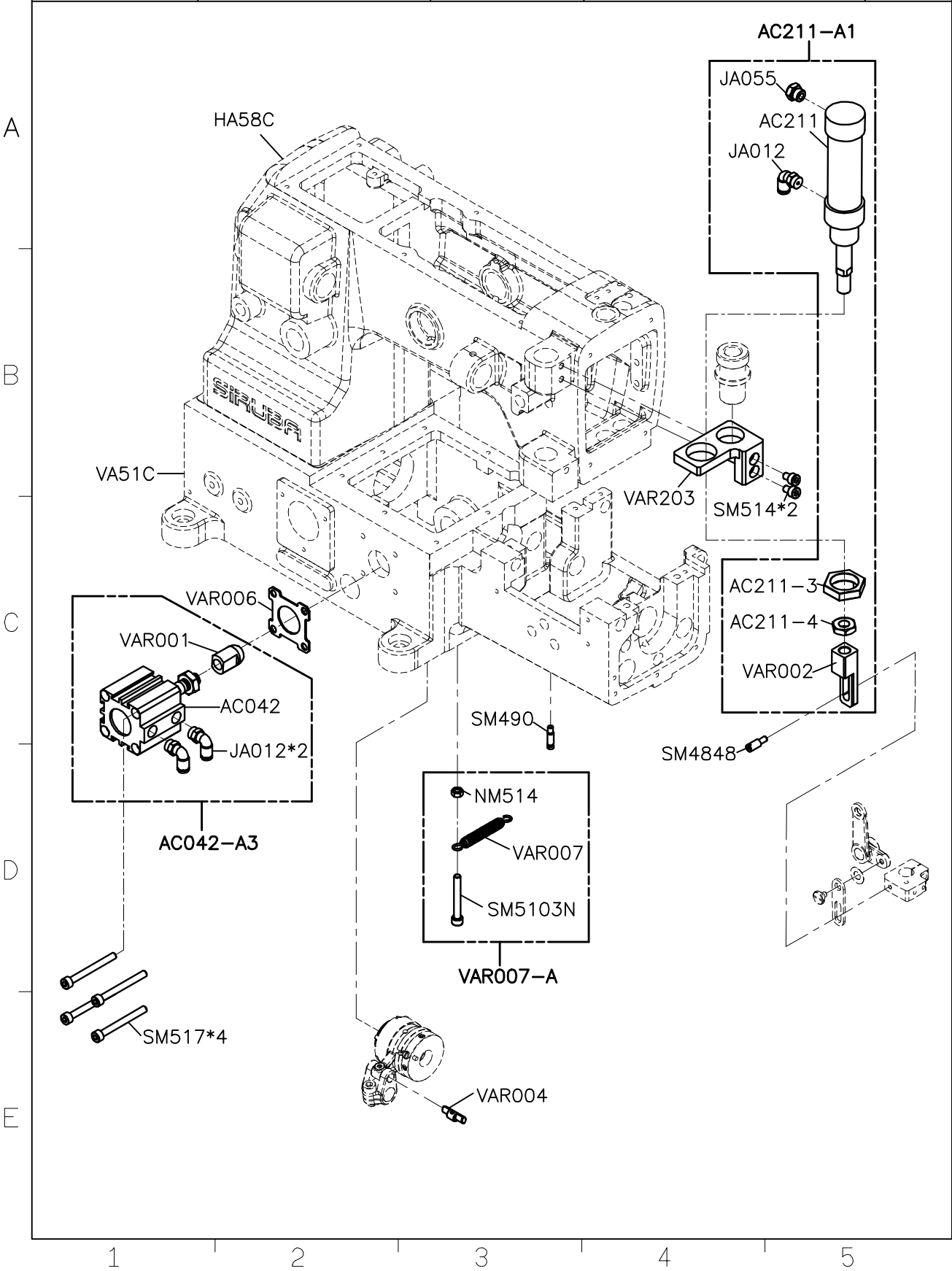


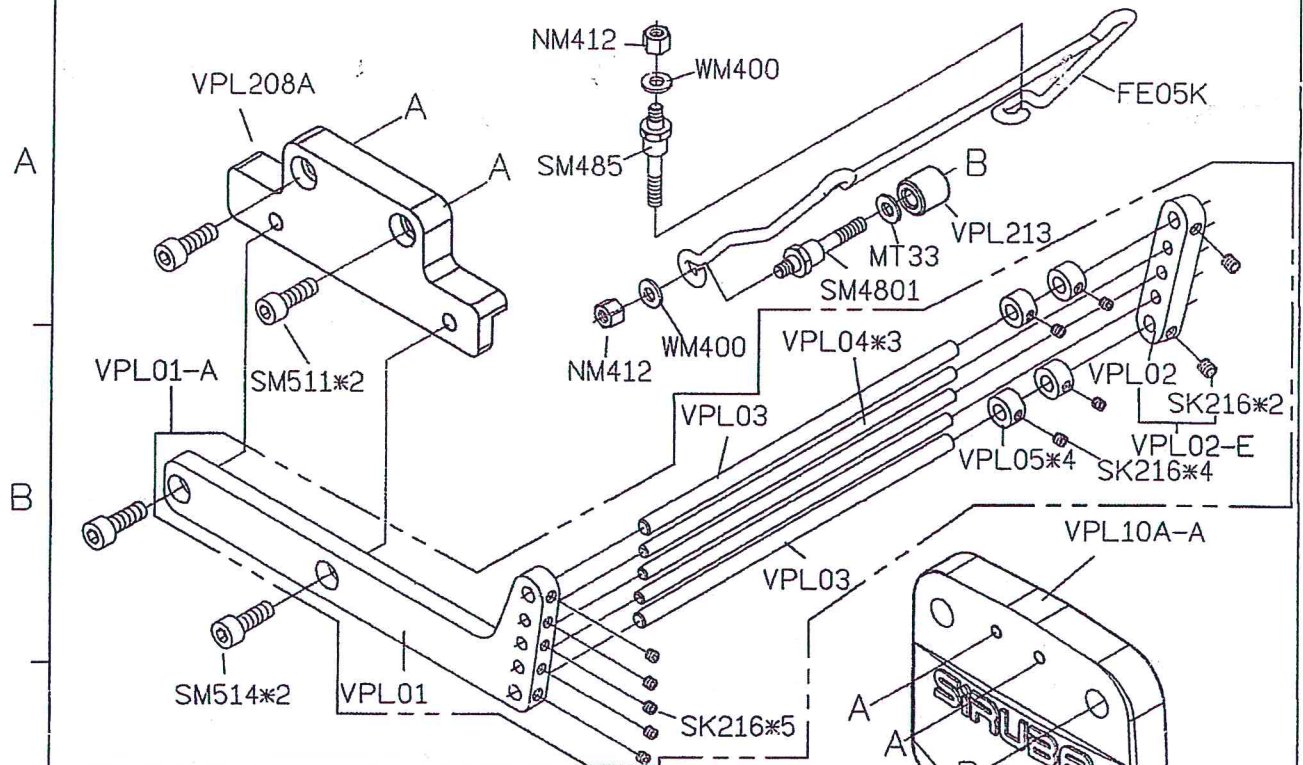
SIRUBA PARTS LIST	Series	Parts Group	Subclass / Remark	Page
	VC008A	VAR		1/1
				Date
				2024/11/05



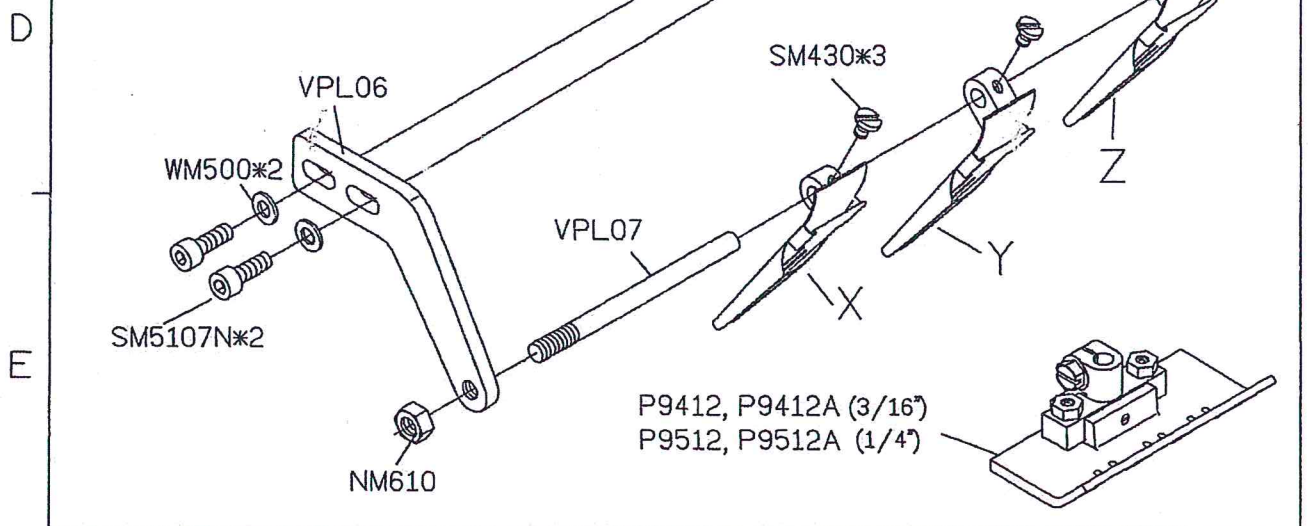
<div>SIRUBA</div> <div>PARTS LIST</div>	Series	Parts Group	Subclass / Remark	Page
	VC008A	VAR	一體式	2/2
				Date
				2024/06/06



SIRUBA PARTS LIST	Series	Parts Group	Subclass / Remark	Page
	VC008A	VPL		1/1
				Date
				2022/09/05



機型 Model	完成尺寸 Finished Size	X	Y	Z	針寬 Needle Holder	壓具 Presser Foot
VC008A-06048	8	B417P	B417AP	B417P	3/16"	P9412DA
	9	B417Q	B417AQ	B417Q		P9412D
VC008A-06064	10	B417R	B417AR	B417R	1/4"	P9512DA
	12	B417S	B417AS	B417S		P9512D
	16	B417U	B417AU	B417U		P9512B
VC008A-12064	16	B417U	B417AU	B417U	1/4"	P9712D



1 2 3 4 5

<div> <div>SIRUBA</div> <div>PARTS LIST</div> </div>	Series	Parts Group	Subclass / Remark	Page
	VC008A	VPQ		1/2
				Date
				2024/01/31

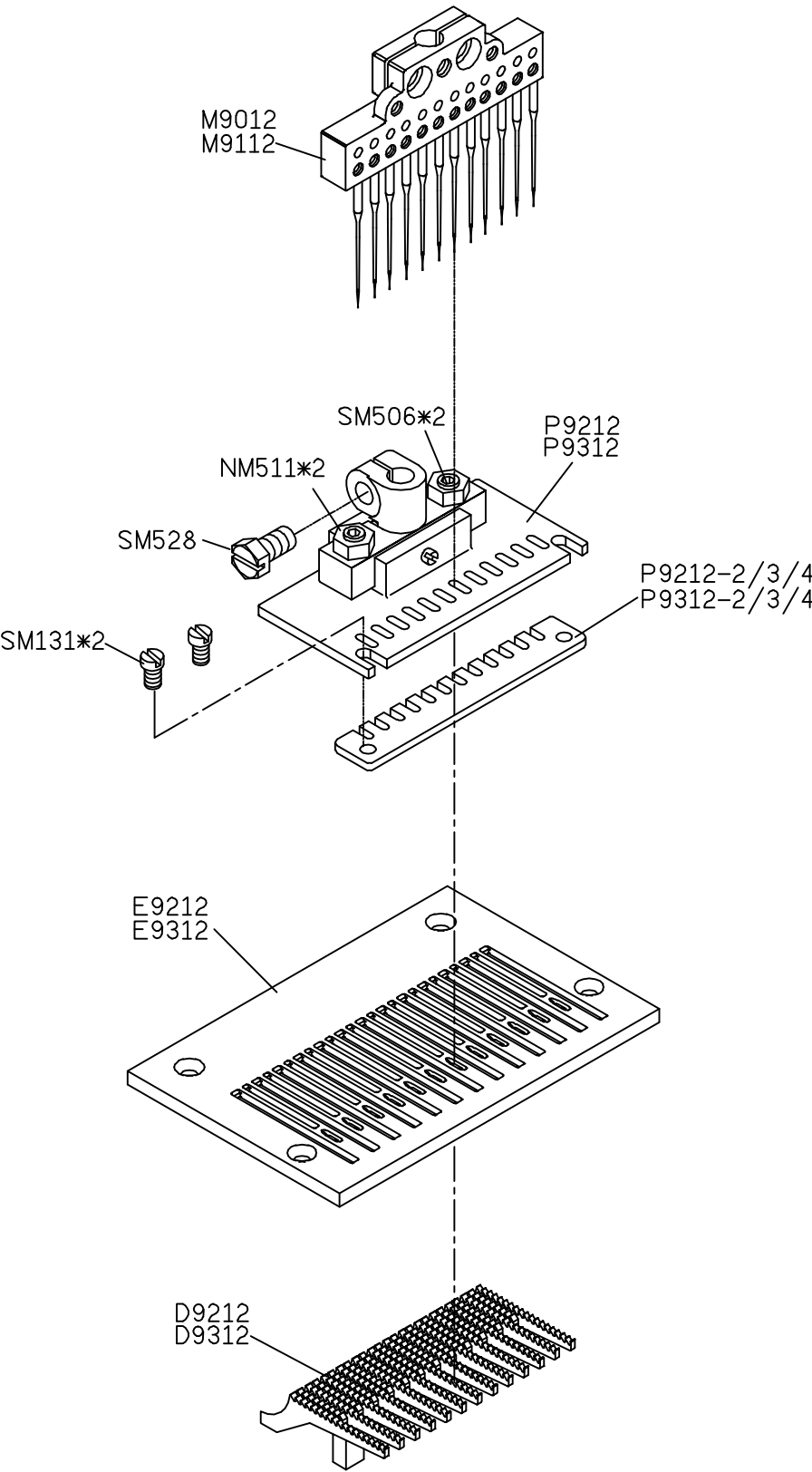
A

B

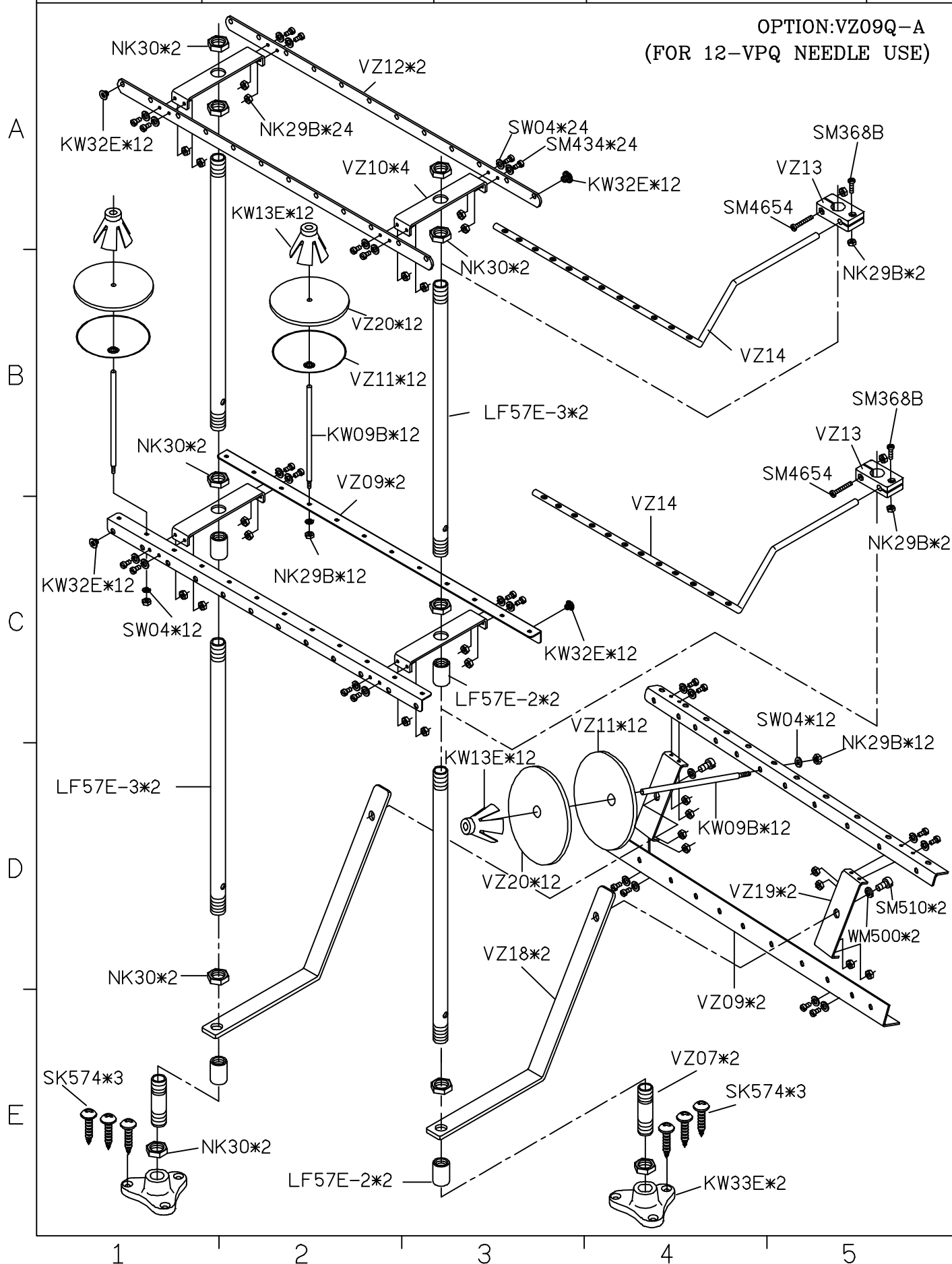
C

D

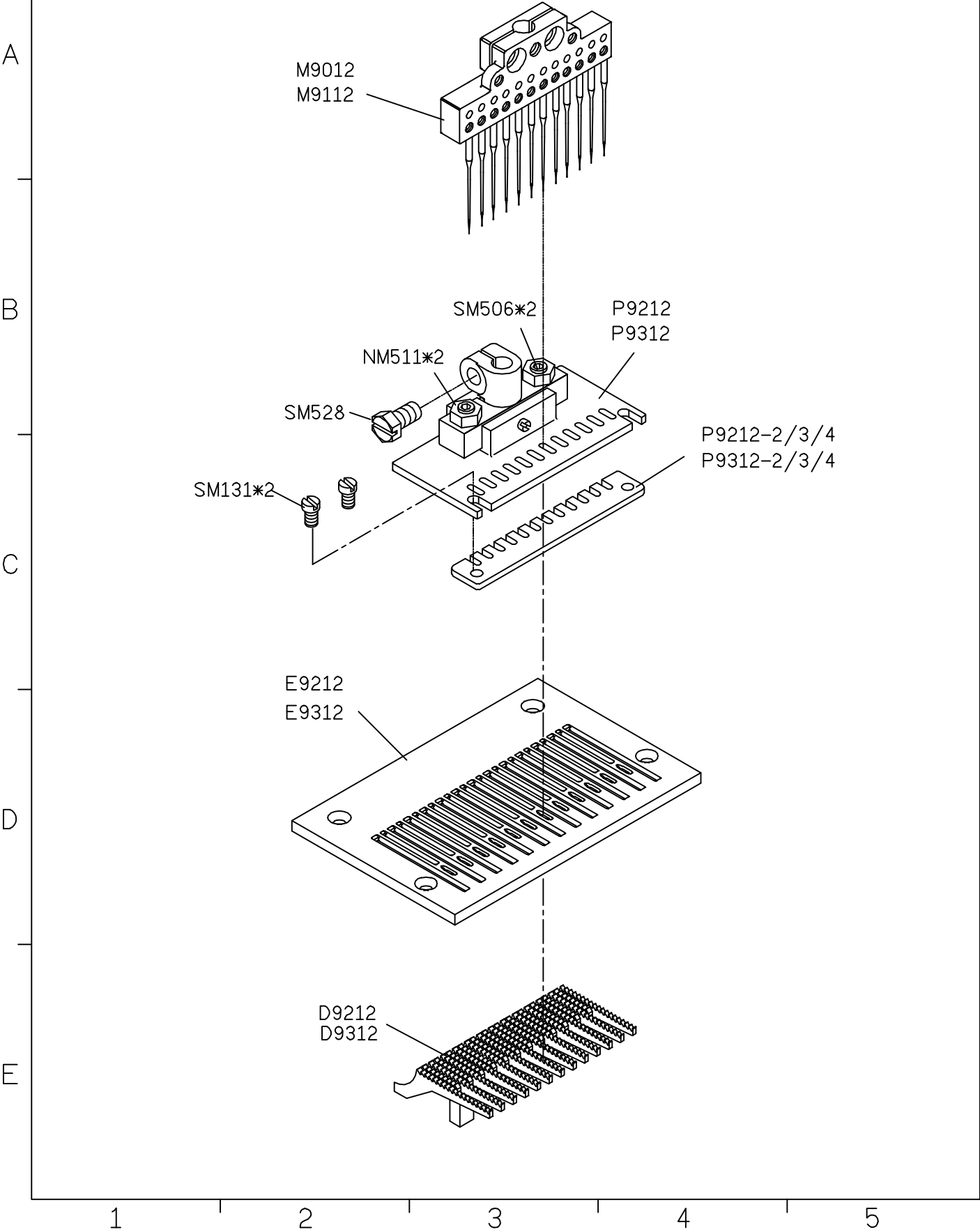
E



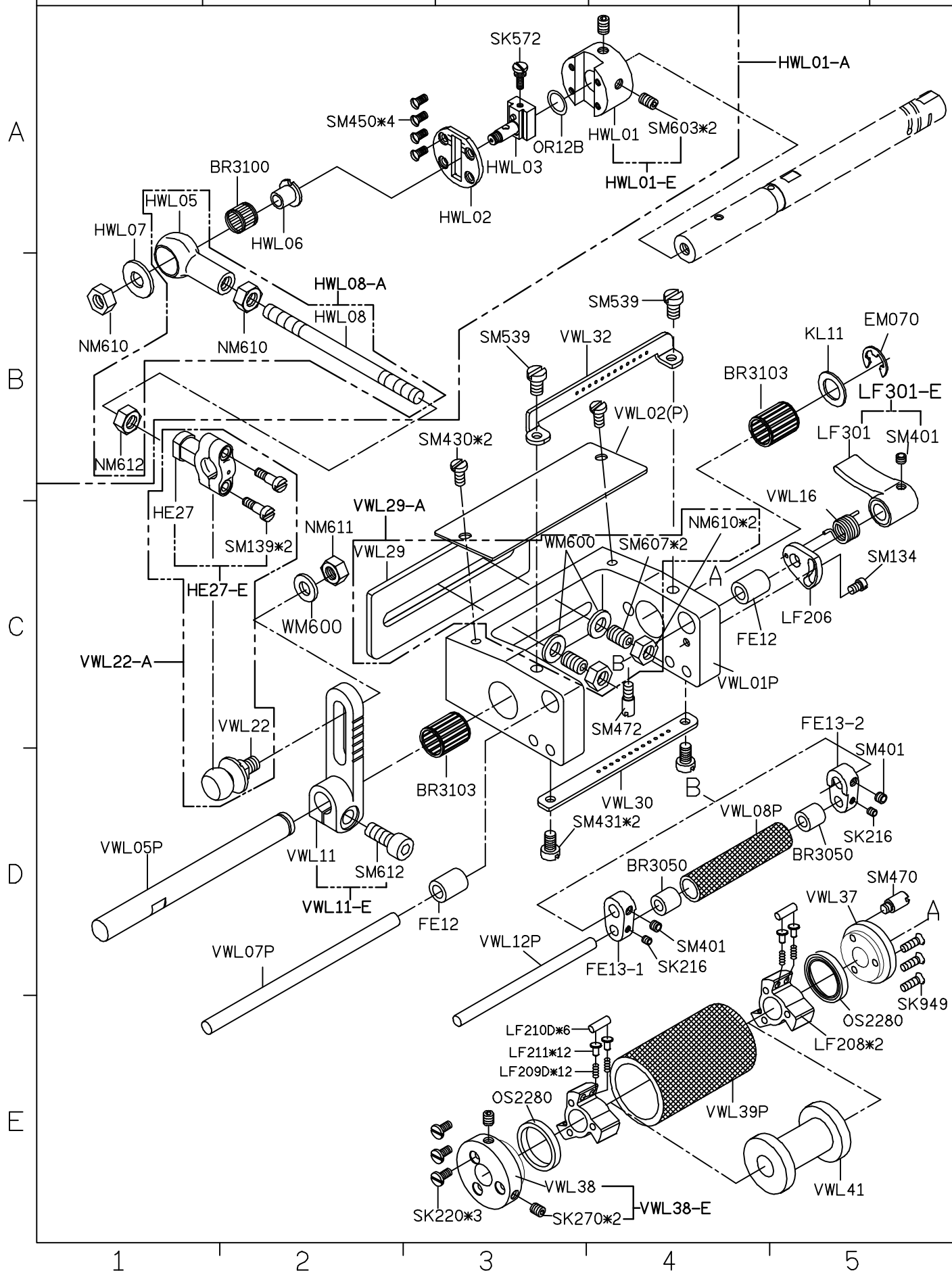
SiRUBA PARTS LIST	Series	Parts Group	Subclass / Remark	Page
	VC008A	VPQ		2/2
				Date
				2024/01/31



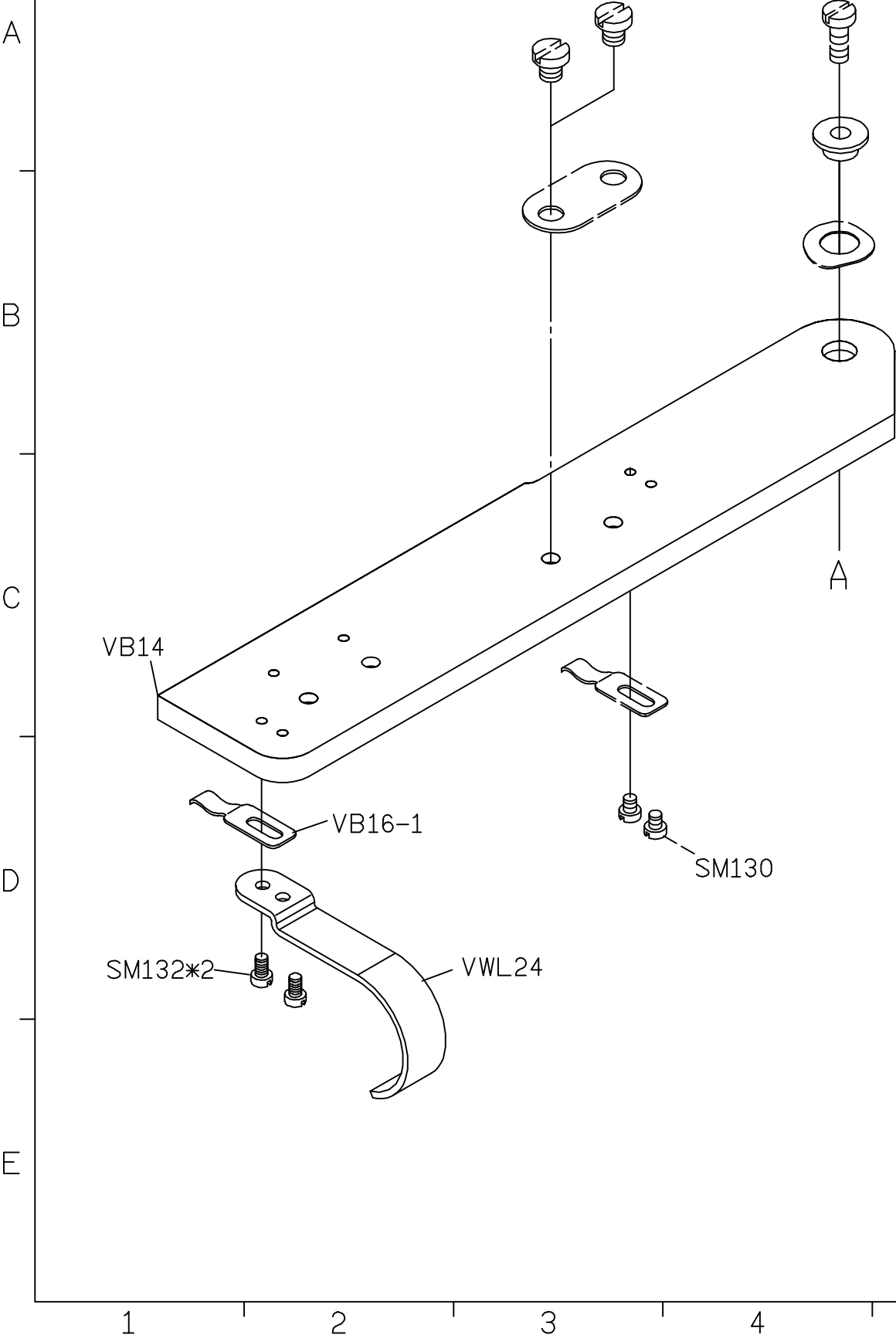
<div> <div>SIRUBA</div> <div>PARTS LIST</div> </div>	Series	Parts Group	Subclass / Remark	Page
	VC008A	VPQK		1/5
				Date
				2024/01/31



SIRUBA PARTS LIST	Series	Parts Group	Subclass / Remark	Page
	VC008A	VPQK		2/5
				Date
				2024/01/31

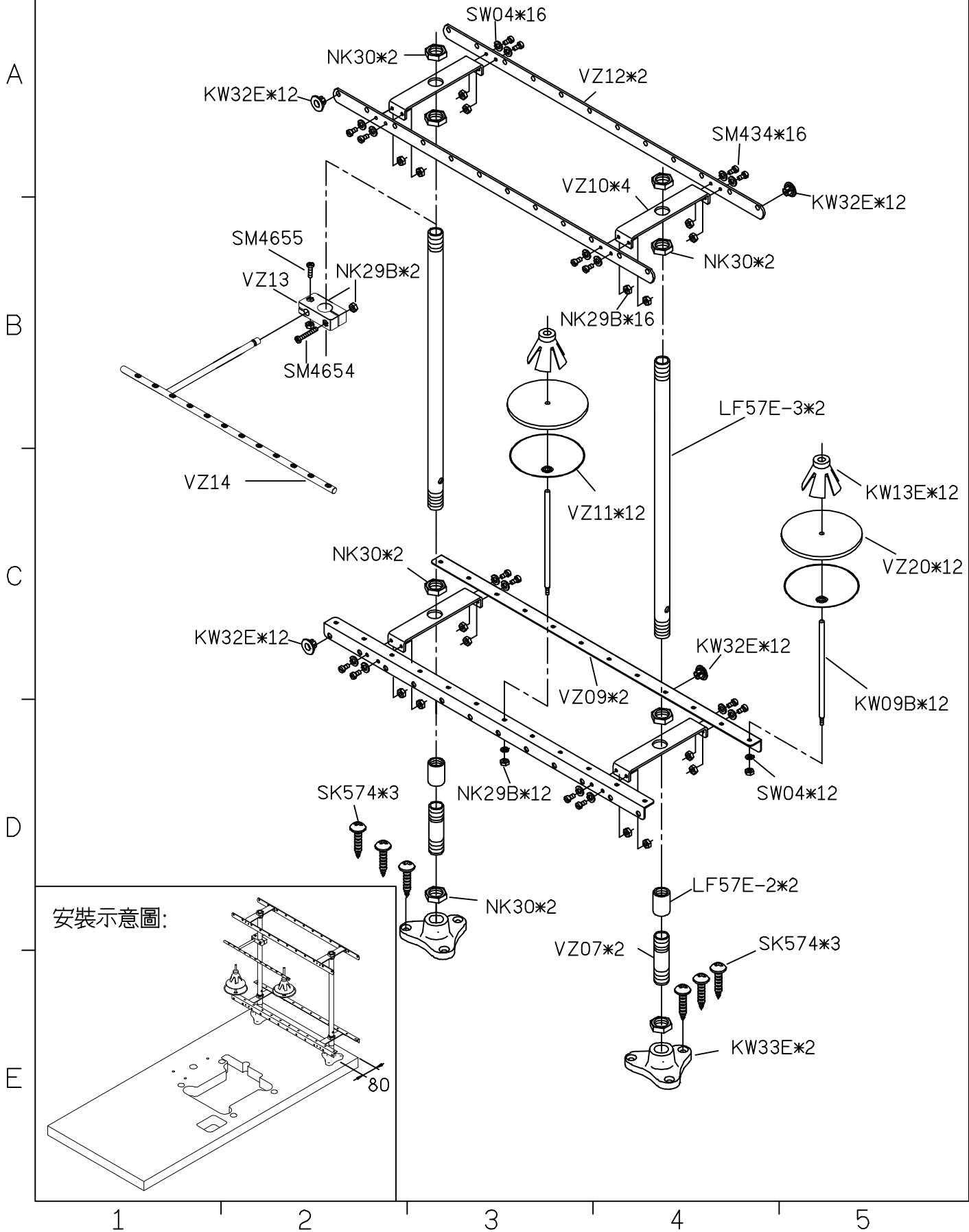


<div> <div>SIRUBA</div> <div>PARTS LIST</div> </div>	Series	Parts Group	Subclass / Remark	Page
	VC008A	VPQK		3/5
				Date
				2024/01/31



SIRUBA PARTS LIST	Series	Parts Group	Subclass / Remark	Page
	VC008A	VPQK		4/5
				Date
				2024/01/31

OPTION:VZ09Q-A1(1/2)



<div> <div>SIRUBA</div> <div>PARTS LIST</div> </div>	Series	Parts Group	Subclass / Remark	Page
	VC008A	VSC		1/7
				Date
				2022/11/14

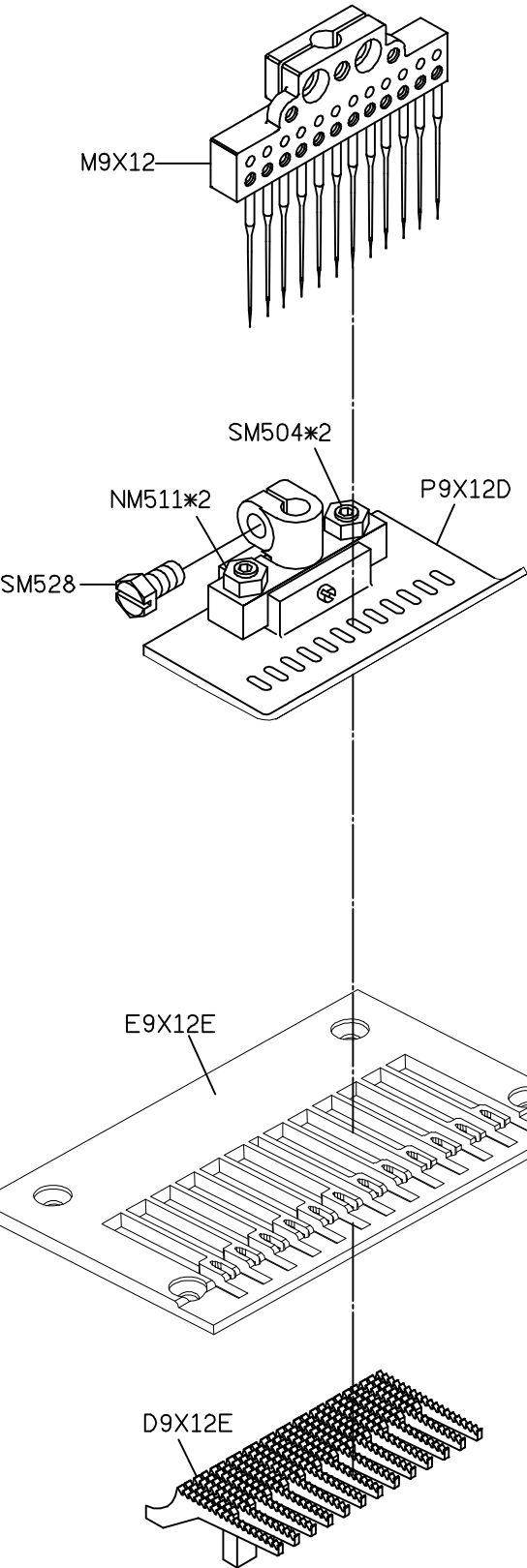
A

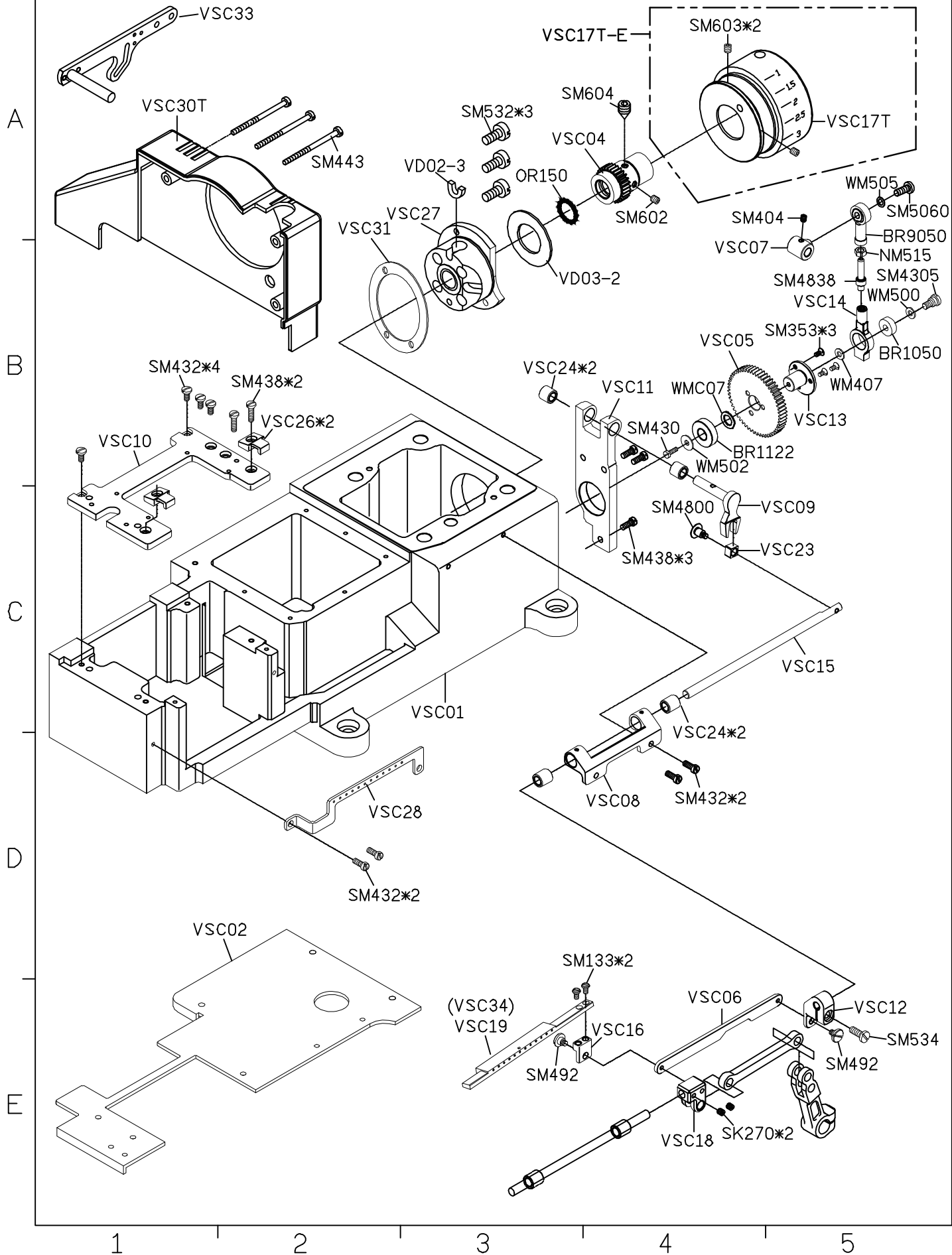
B

C

D

E





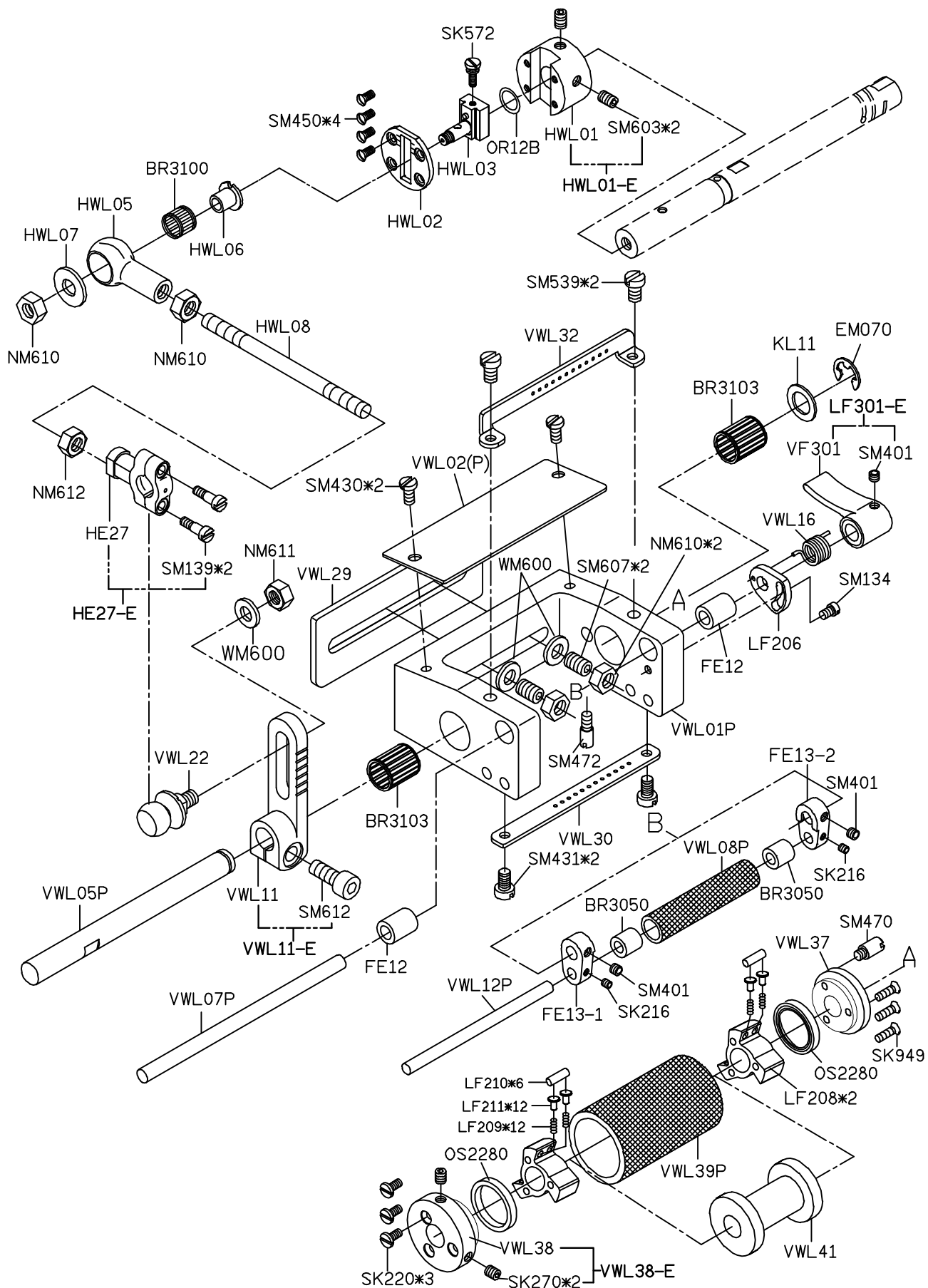
A

B

C

D

E



1

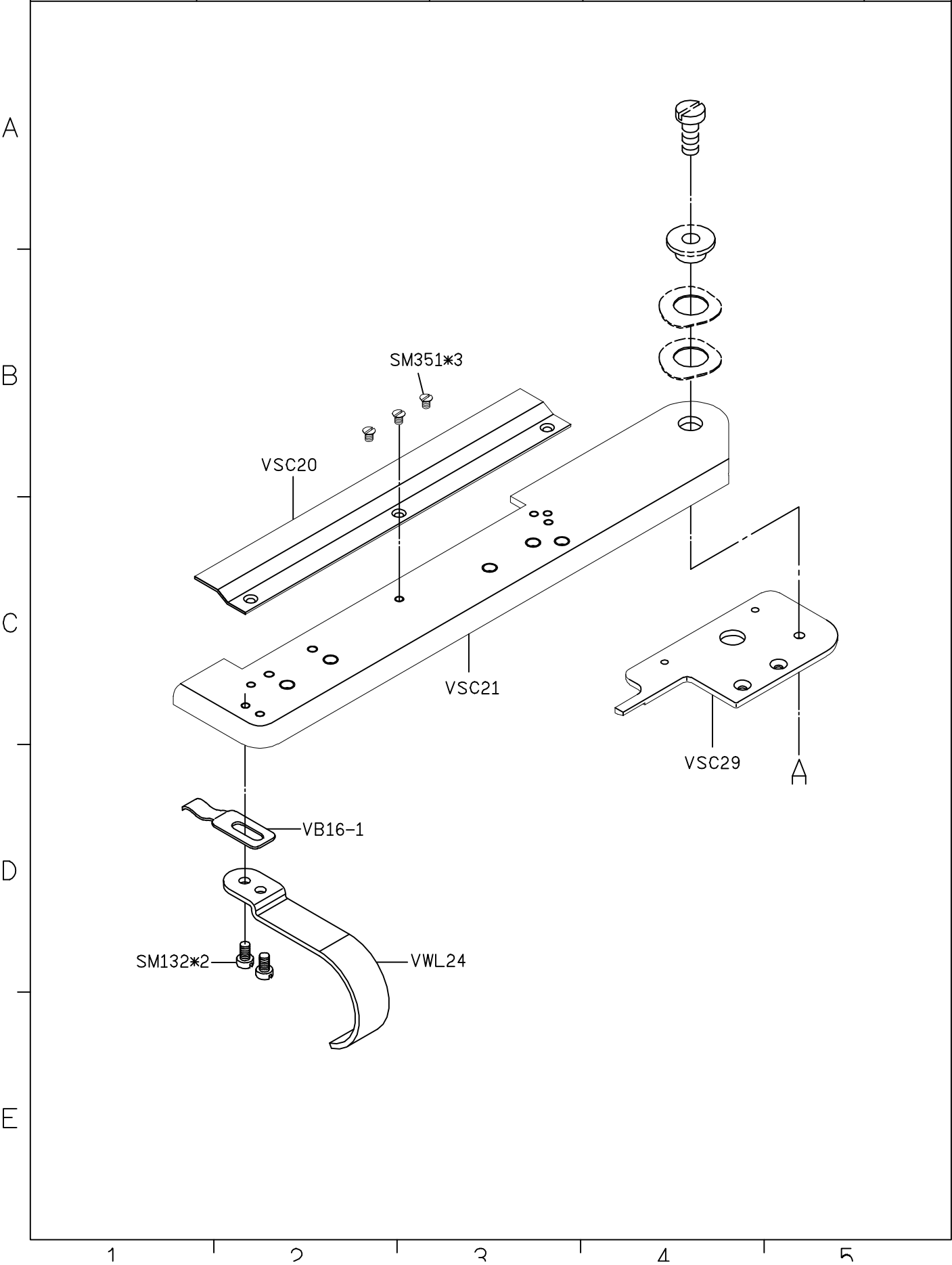
2

3

4

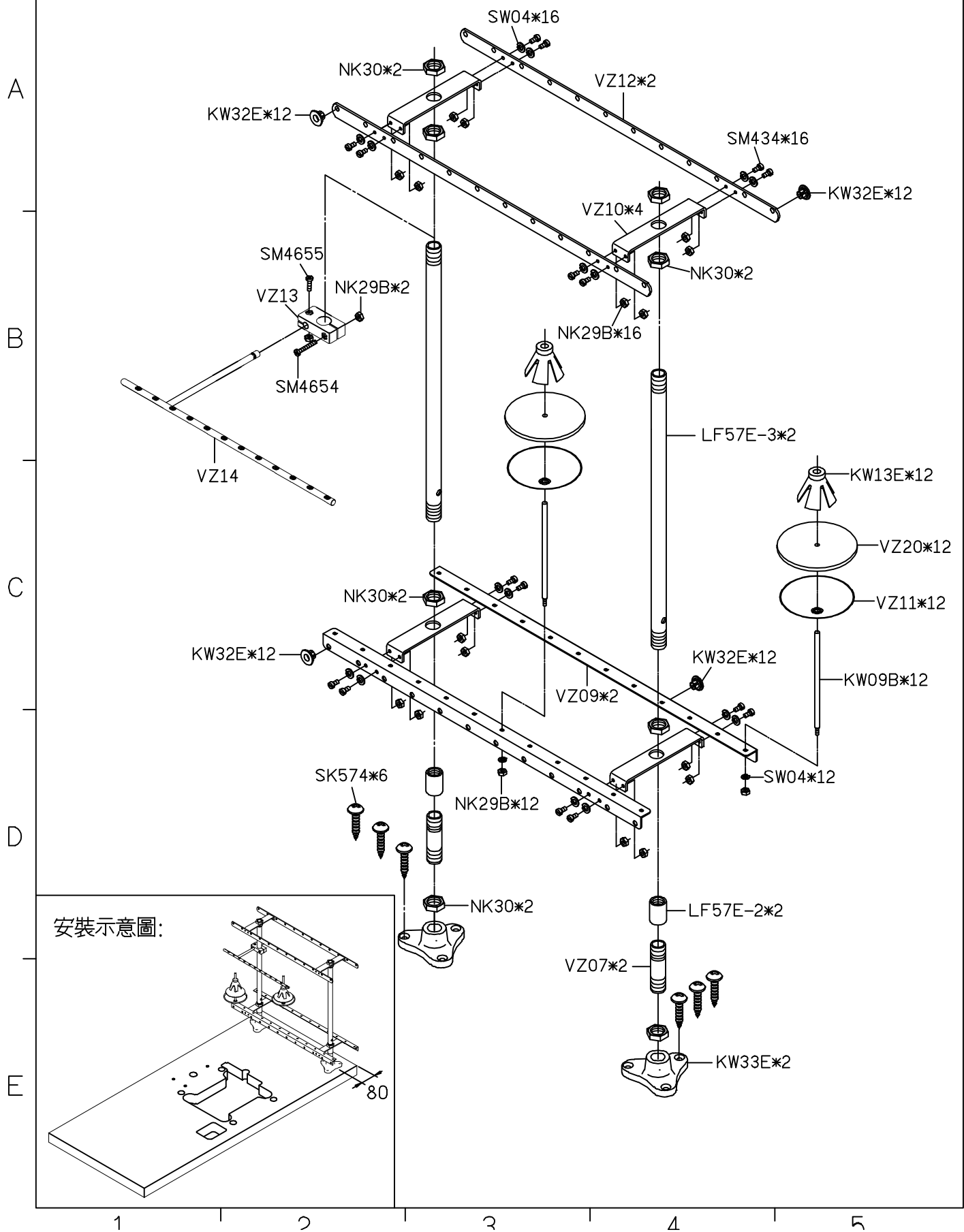
5

<div>SIRUBA</div> <div>PARTS LIST</div>	Series	Parts Group	Subclass / Remark	Page
	VC008A	VSC		4/7
				Date
				2022/11/14



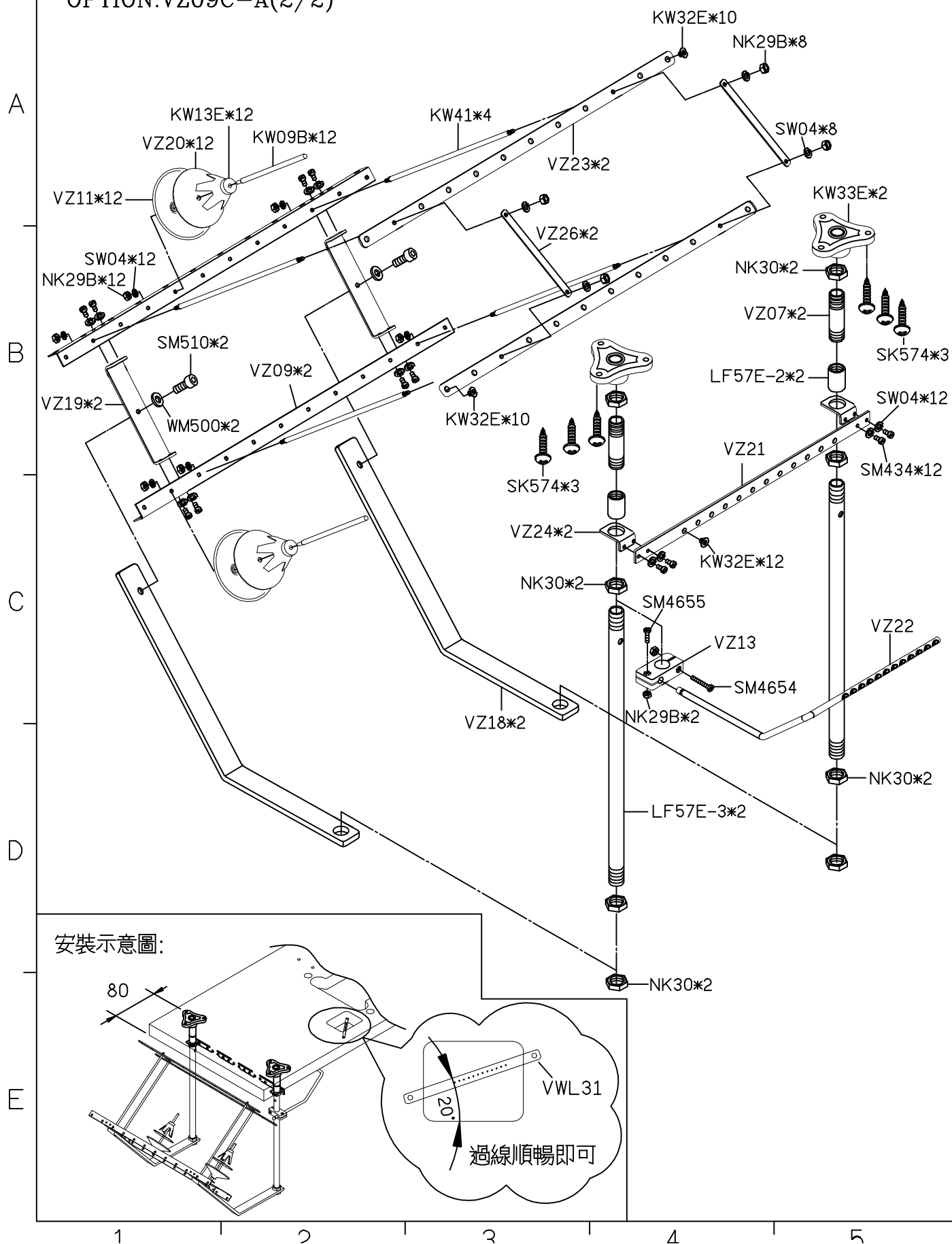
SIRUBA PARTS LIST	Series	Parts Group	Subclass / Remark	Page
	VC008A	VSC		5/7
				Date
				2022/11/14

OPTION:VZ09C-A(1/2)



SIRUBA PARTS LIST	Series	Parts Group	Subclass / Remark	Page
	VC008A	VSC		6/7
				Date
				2022/11/14

OPTION:VZ09C-A(2/2)



SIRUBA

PARTS LIST

Series

VC008A

Parts Group

VSC

Subclass / Remark

Page

7/7

Date

2022/11/14

OPTION:VZ09-A
(FOR 6~12 NEEDLE USE)

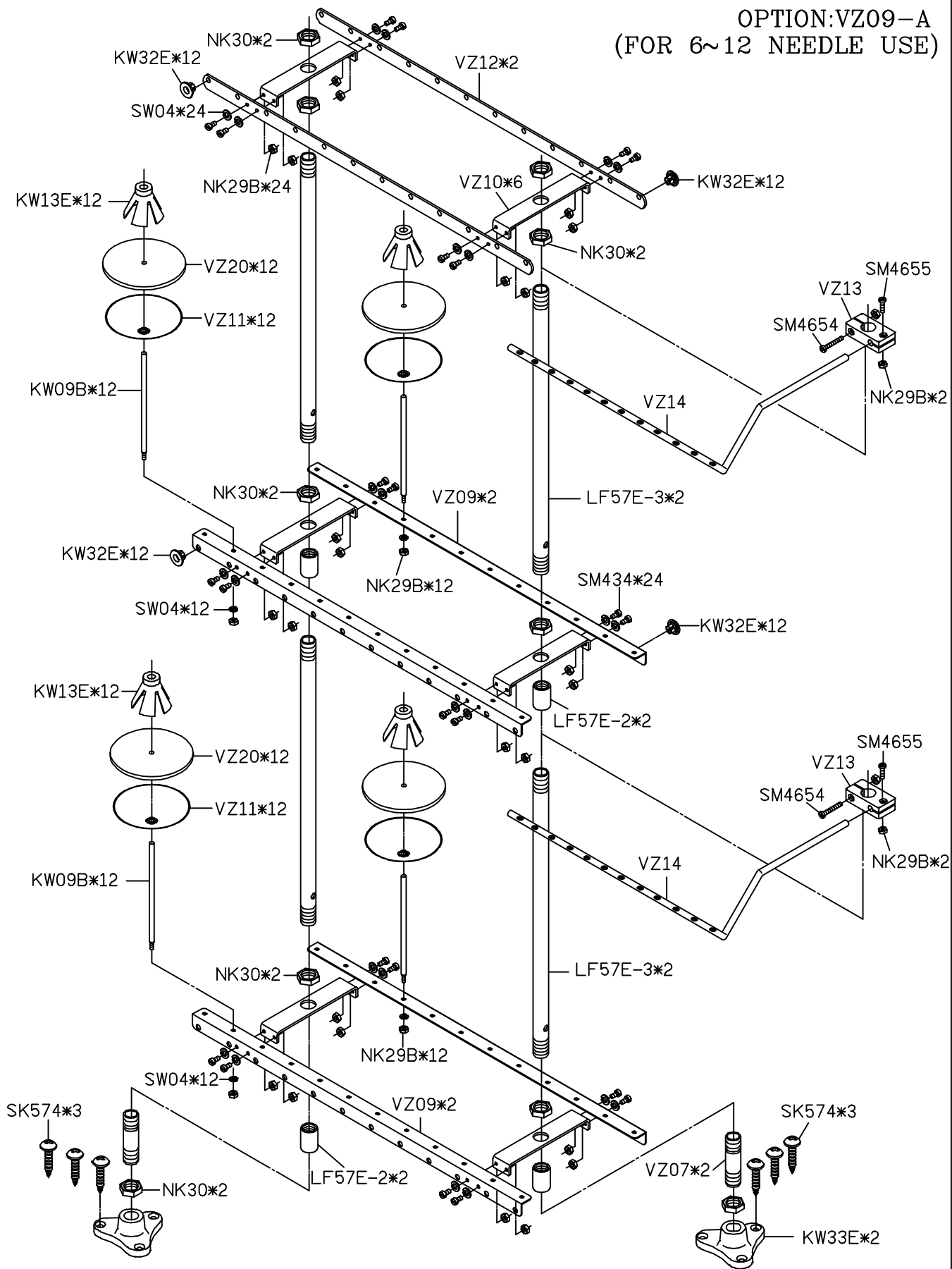
A

B

C

D

E



1

2

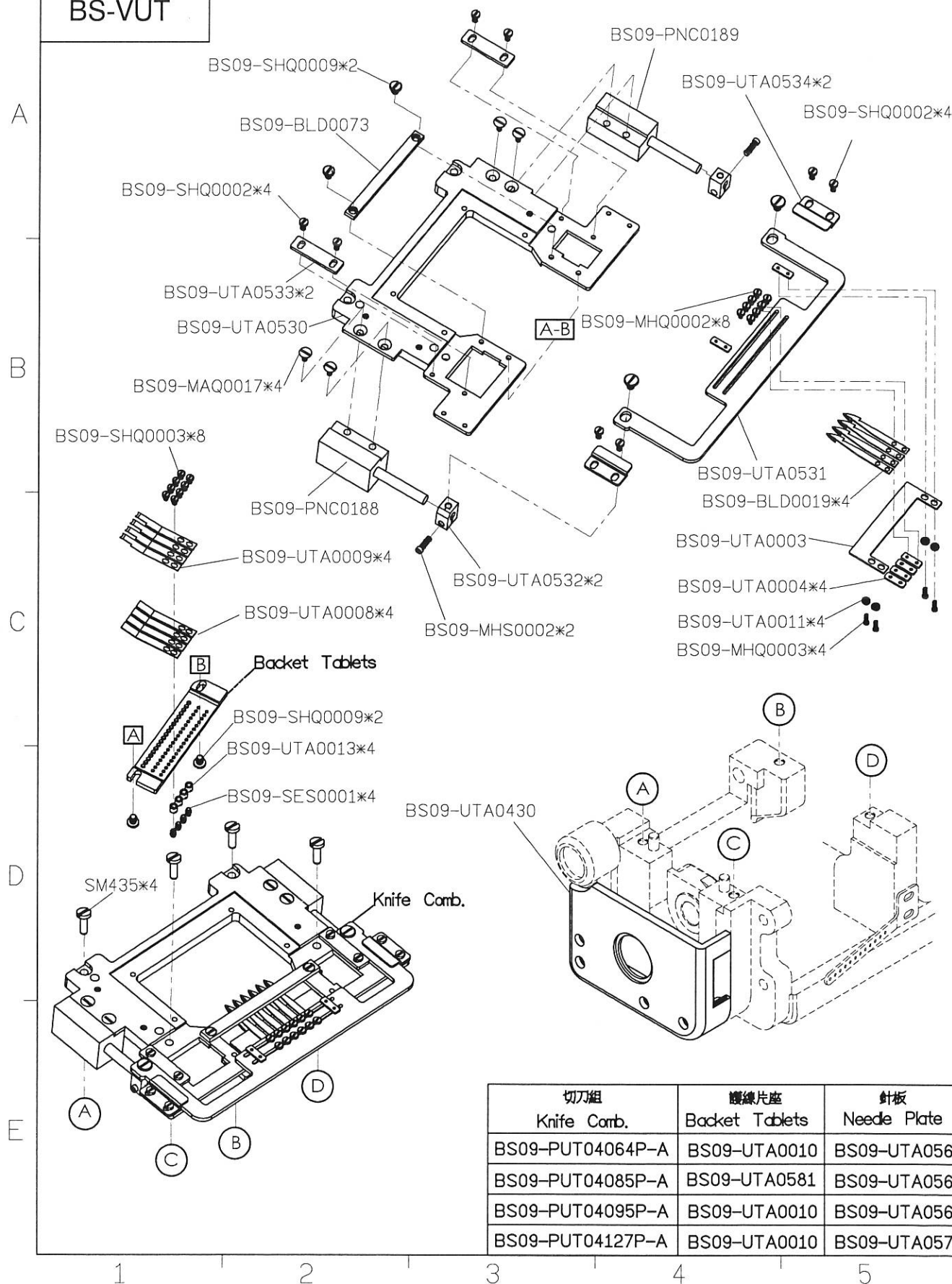
3

4

5

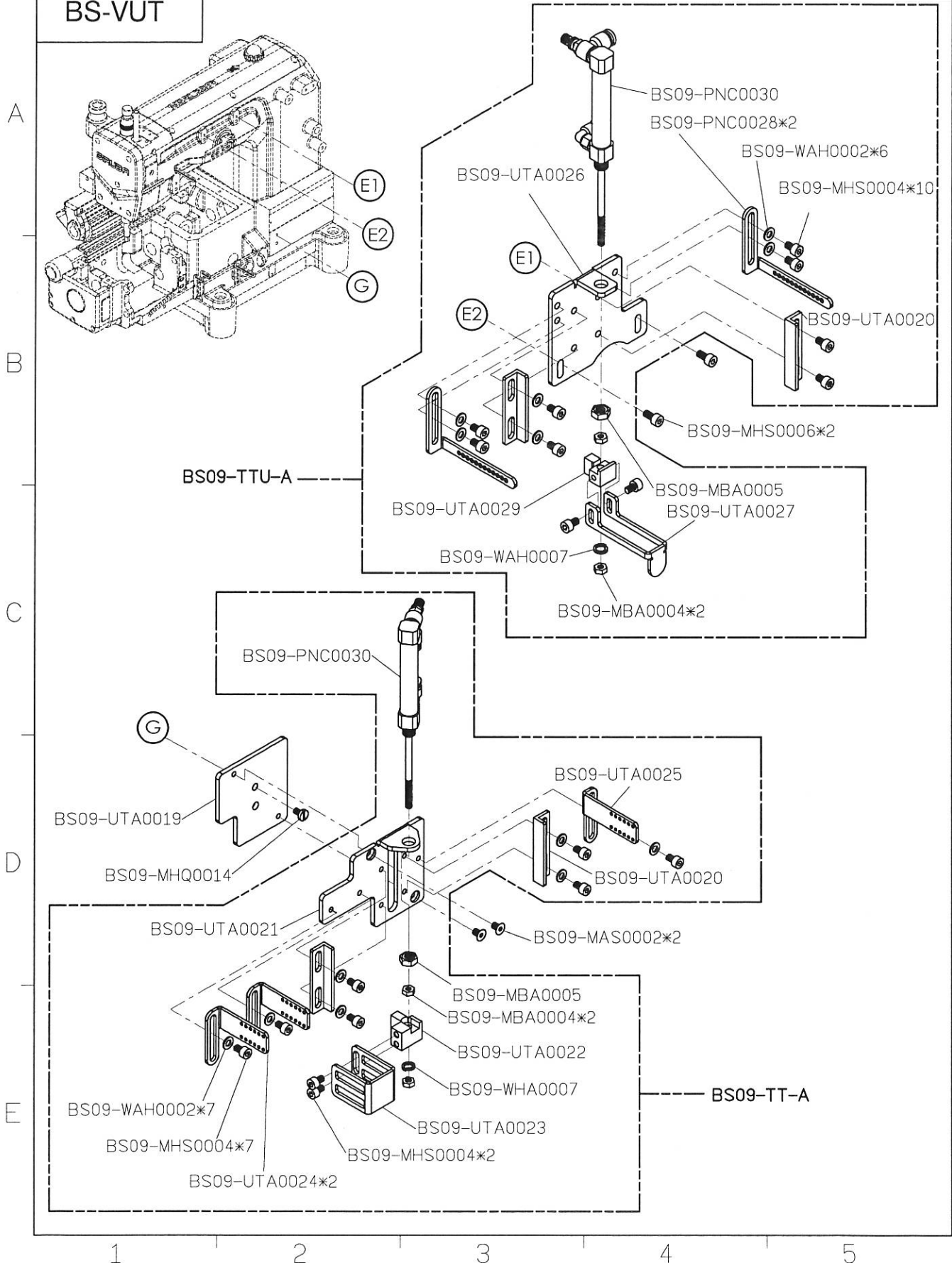
<div>SIRUBA</div> <div>PARTS LIST</div>	Series	Parts Group	Subclass / Remark	Page
	VC008A	VUT		1/10
				Date
				2024/04/16

BS-VUT



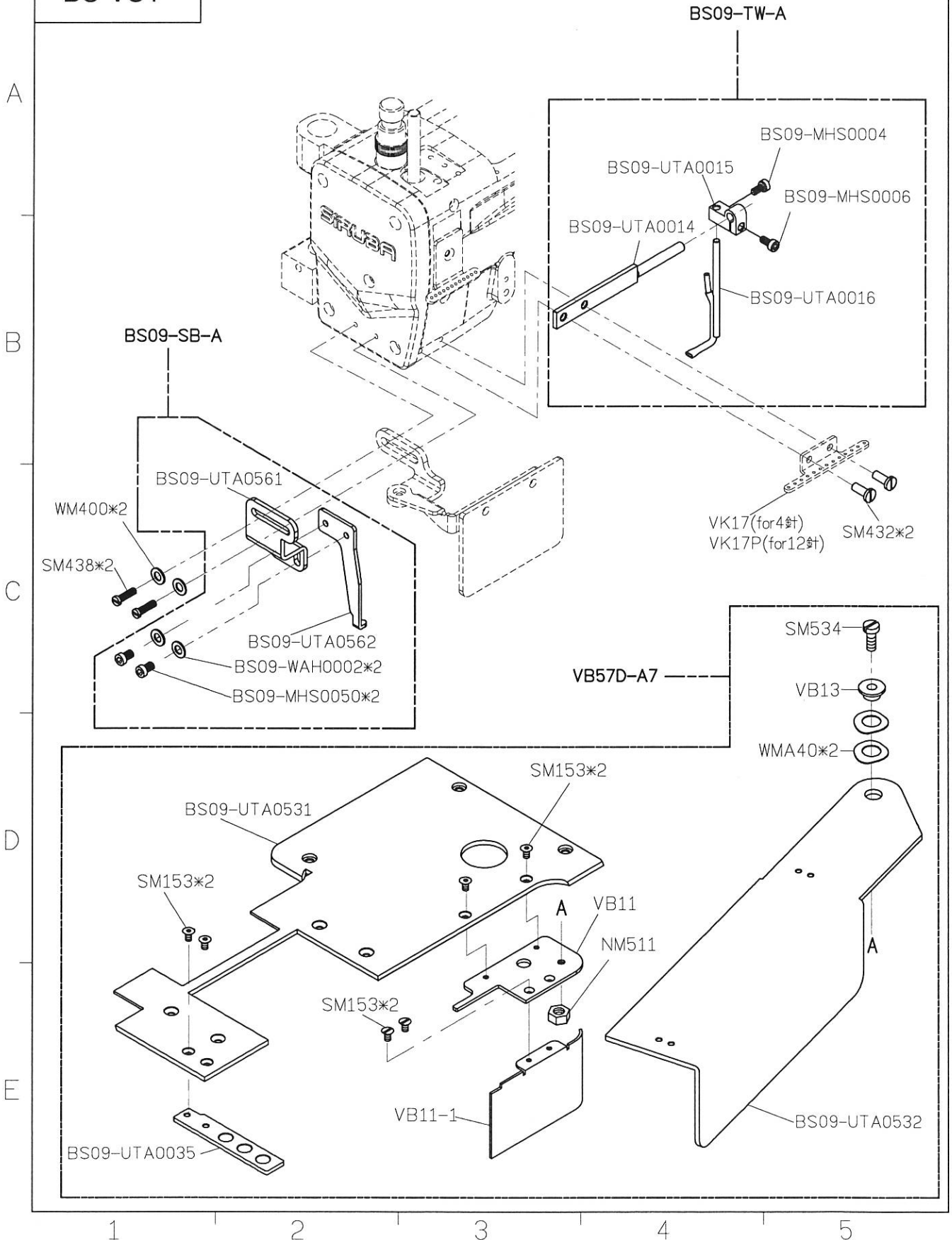
SIRUBA PARTS LIST	Series	Parts Group	Subclass / Remark	Page
	VC008A	VUT		2/10
				Date
				2024/04/16

BS-VUT



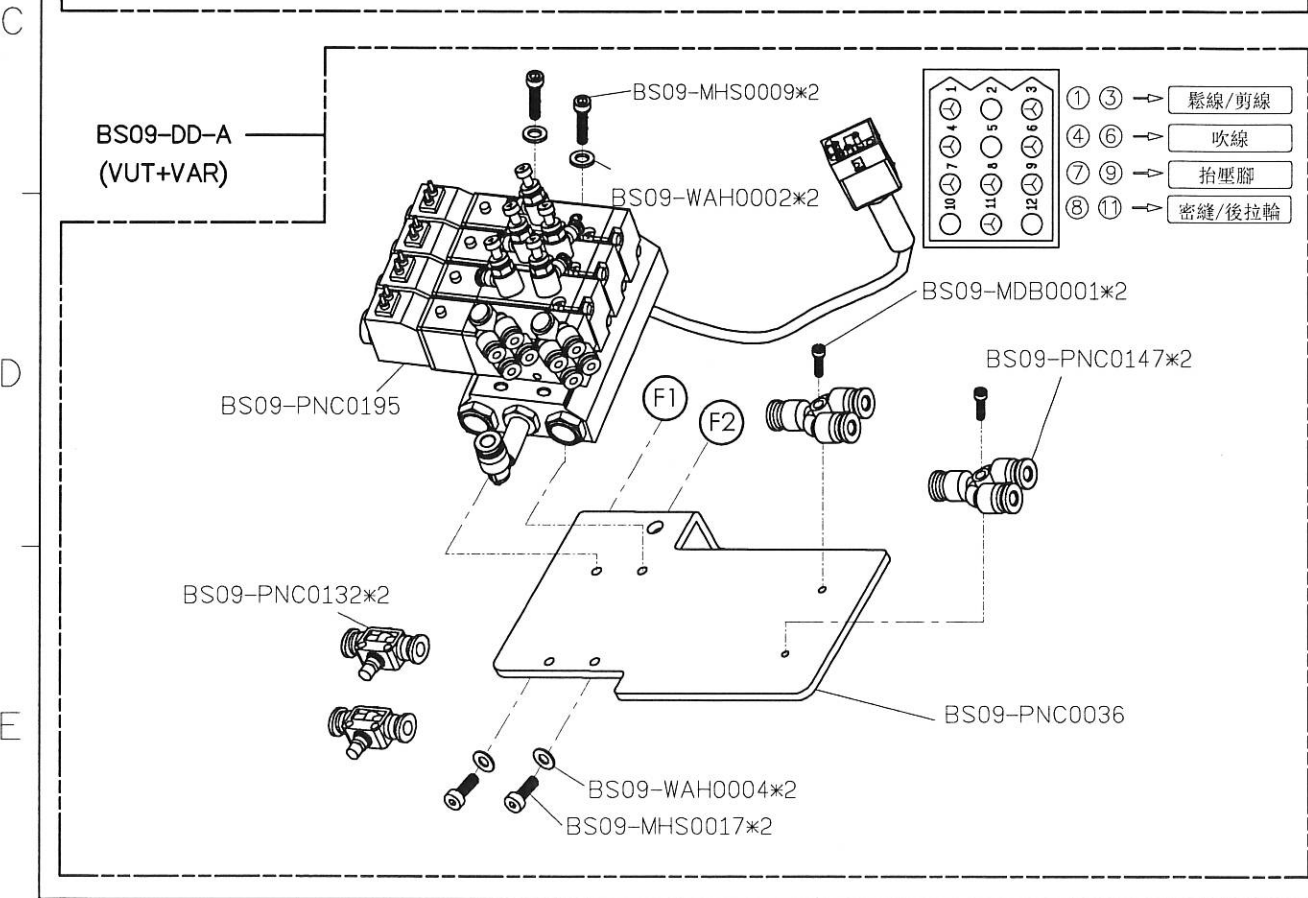
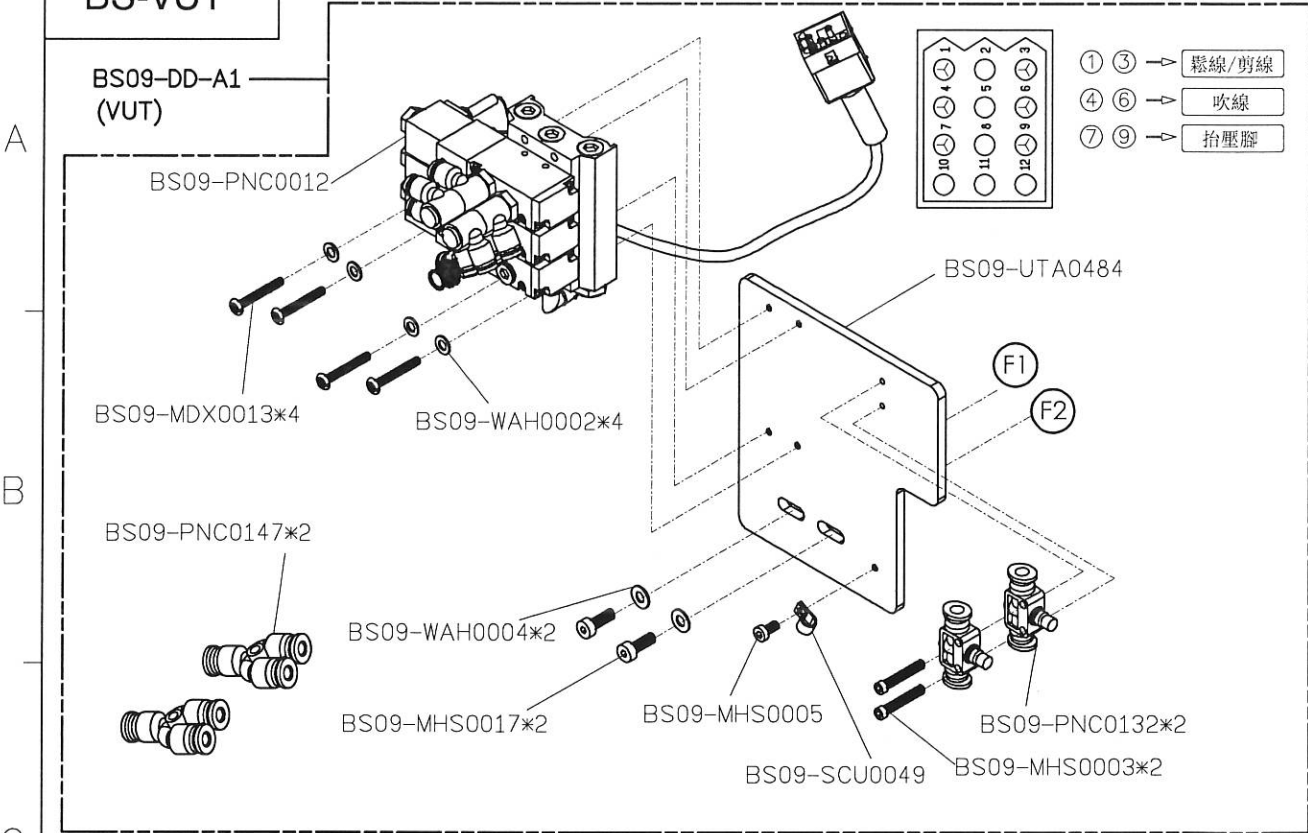
SIRUBA PARTS LIST	Series	Parts Group	Subclass / Remark	Page
	VC008A	VUT		3/10
				Date
				2024/04/16

BS-VUT



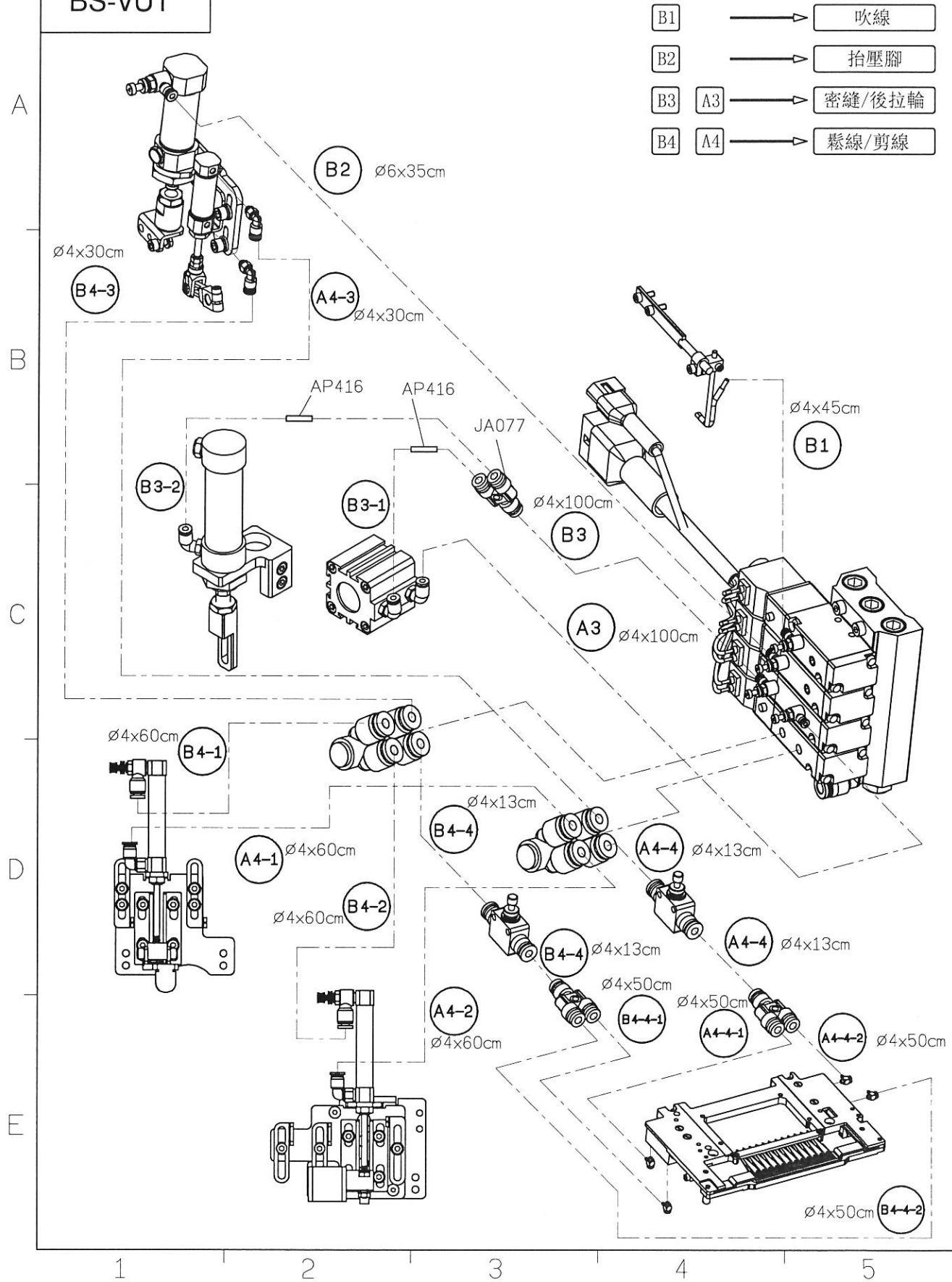
SIRUBA PARTS LIST	Series	Parts Group	Subclass / Remark	Page
	VC008A	VUT		5/10
				Date
				2024/04/16

BS-VUT



SIRUBA PARTS LIST	Series	Parts Group	Subclass / Remark	Page
	VC008A	VUT	FOR VUT+VAR	7/10
				Date
				2024/04/16

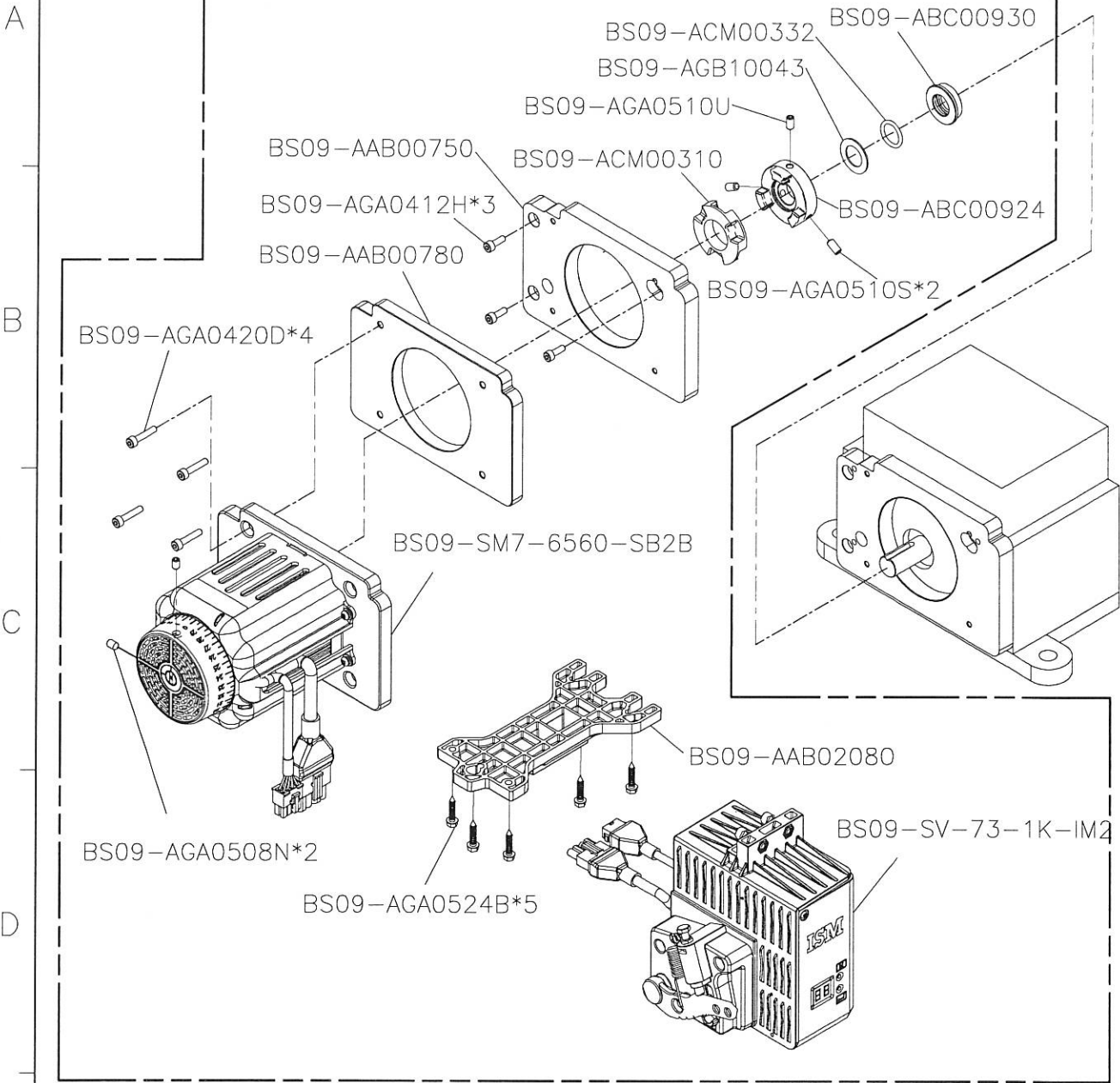
BS-VUT



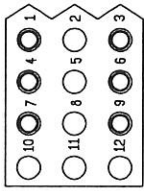
SIRUBA PARTS LIST	Series	Parts Group	Subclass / Remark	Page
	VC008A	VUT	永輝興直驅馬達	8/10
				Date
				2024/04/16

BS-VUT

BS09-ISM-A1



註: ⊕表示公PIN, ⊙表示母PIN



- ① ③ → 鬆線/剪線
- ④ ⑥ → 吹線
- ⑦ ⑨ → 抬壓腳

SIRUBA PARTS LIST	Series	Parts Group	Subclass / Remark	Page
	VC008A	VUT	永輝興直驅馬達 FOR VUT+VAR	9/10
				Date
				2024/04/16

BS-VUT

BS09-ISM-A

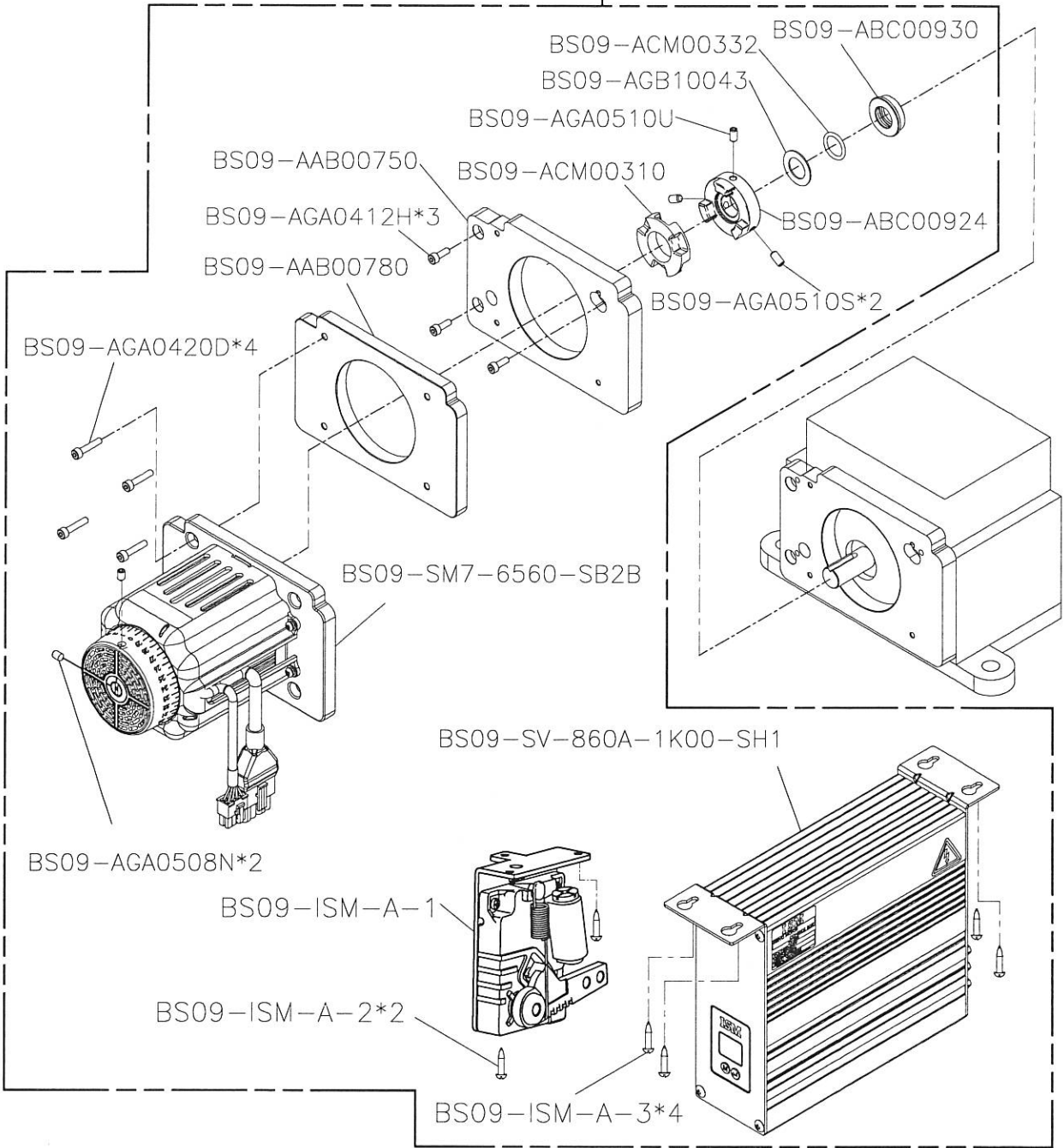
A

B

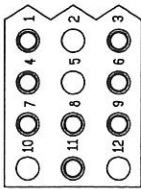
C

D

E



註: ⊕表示公 PIN, ⊙表示母 PIN



- | | | | |
|---|---|---|--------|
| ① | ③ | → | 鬆線/剪線 |
| ④ | ⑥ | → | 吹線 |
| ⑦ | ⑨ | → | 抬壓腳 |
| ⑧ | ⑪ | → | 密縫/後拉輪 |

1

2

3

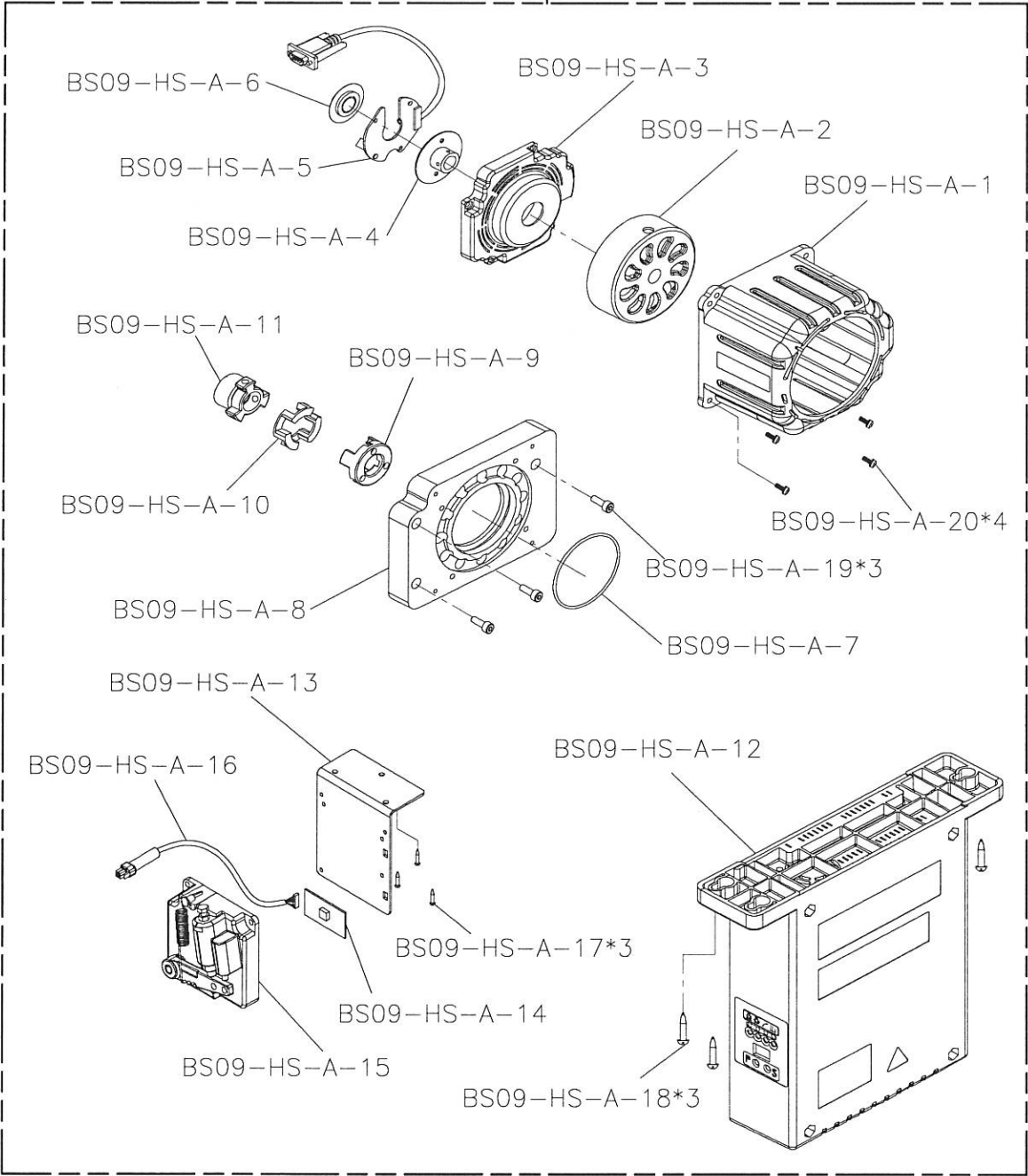
4

5

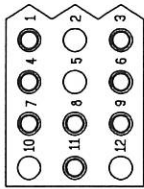
SIRUBA PARTS LIST	Series	Parts Group	Subclass / Remark	Page
	VC008A	VUT	賀欣直驅馬達	10/10
				Date
				2024/04/16

BS-VUT

BS09-HS-A

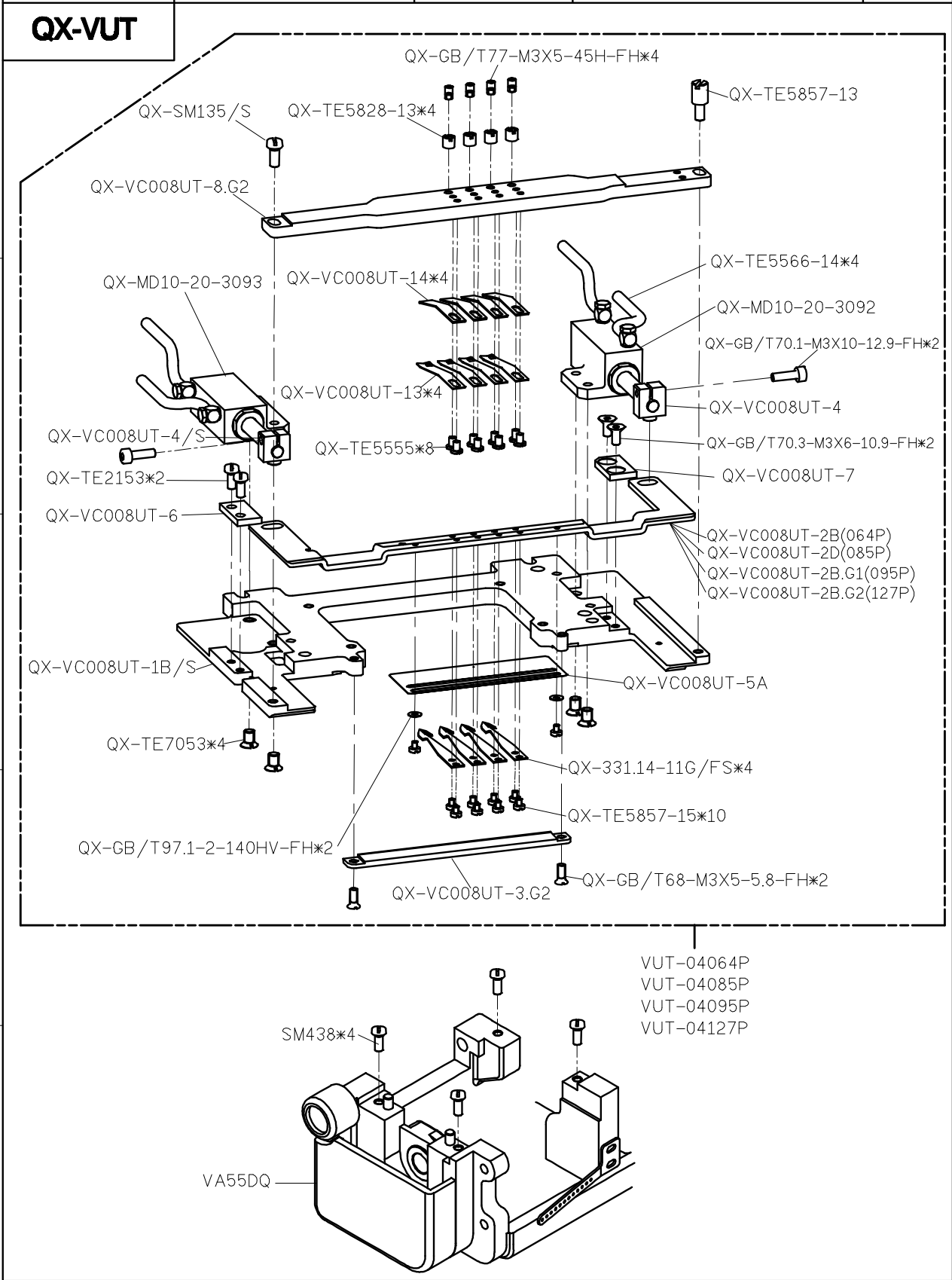


註: ⊕表示公 PIN, ⊙表示母 PIN

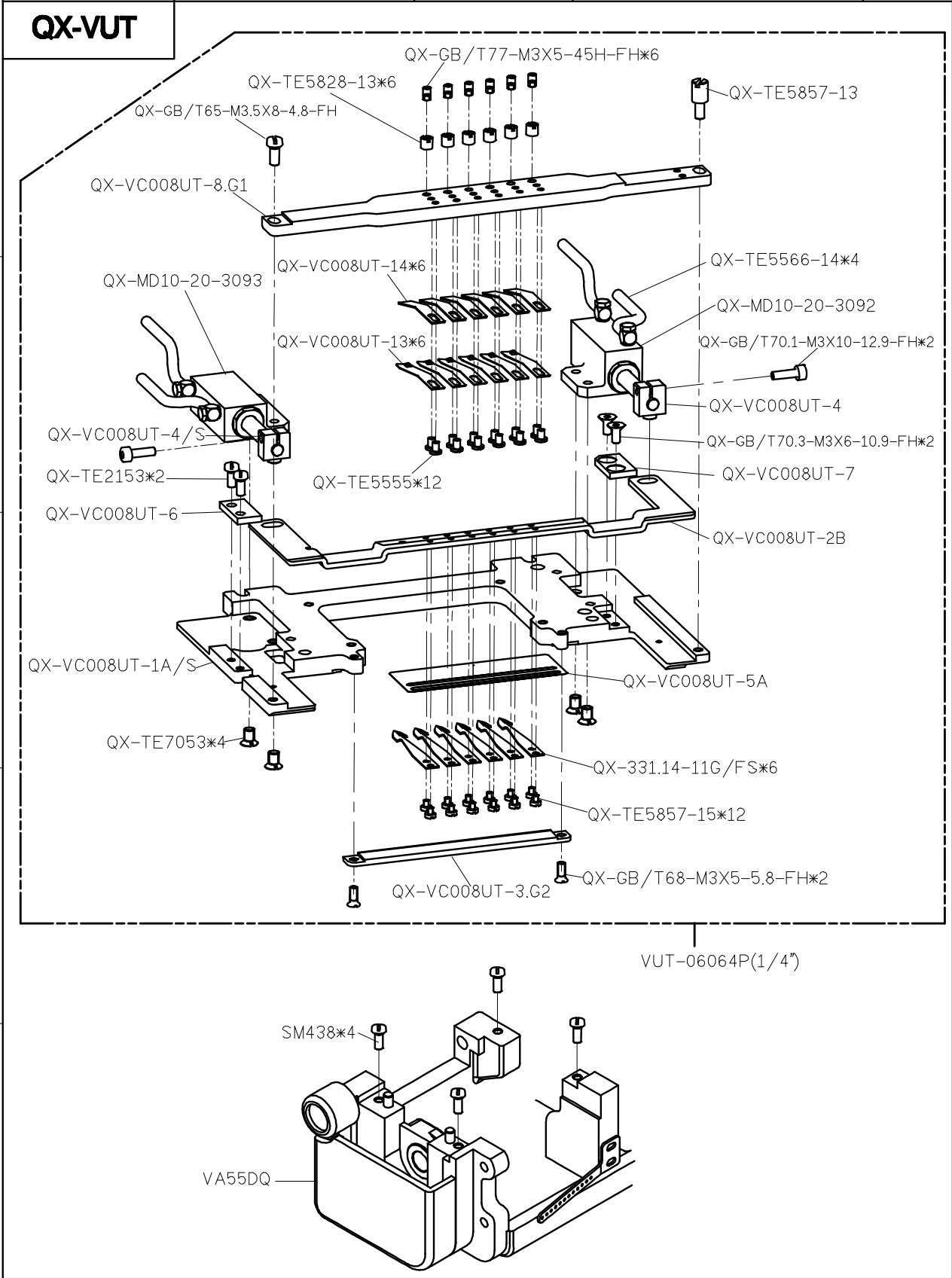


- ① ③ → 鬆線/剪線
- ④ ⑥ → 吹線
- ⑦ ⑨ → 抬壓腳
- ⑧ ⑪ → 密縫/後拉輪

SIRUBA PARTS LIST	Series	Parts Group	Subclass / Remark	Page
	VC008A	VUT	● Use For 4 NEEDLE	1/10
				Date
				2024/06/26



SIRUBA PARTS LIST	Series	Parts Group	Subclass / Remark	Page
	VC008A	VUT	● Use For 6 NEEDLE	2/10
				Date
				2024/06/26



1

2

3

4

5

SIRUBA PARTS LIST	Series	Parts Group	Subclass / Remark	Page
	VC008A	VUT	● Use For 12 NEEDLE	3/10
				Date
				2024/06/26
QX-VUT				

QX-GB/T77-M3*5-45H-FH*12

QX-TE5828-13*12

QX-GB/T65-M3.5X8-4.8-FH

QX-MD10-20-3093

QX-VC008UT-14*12

QX-VC008UT-13*12

QX-VC008UT-4/S

QX-TE2153*2

QX-VC008UT-6

QX-VC008UT-1A/S

QX-TE7053*4

QX-TE5555*24

QX-VC008UT-8.G1

QX-MD10-20-3092

QX-GB/T70.1-M3X10-12.9-FH*2

QX-VC008UT-4B

QX-GB/T70.3-M3X6-10.9-FH*2

QX-VC008UT-7

QX-VC008UT-2C(50P)

QX-VC008UT-2B(64P)

QX-VC008UT-5

QX-331.14-11G/FS*12

QX-TE5857-15*24

QX-VC008UT-3.G1

QX-GB/T68-M3X5-5.8-FH*2

VUT-12048P

VUT-12050P

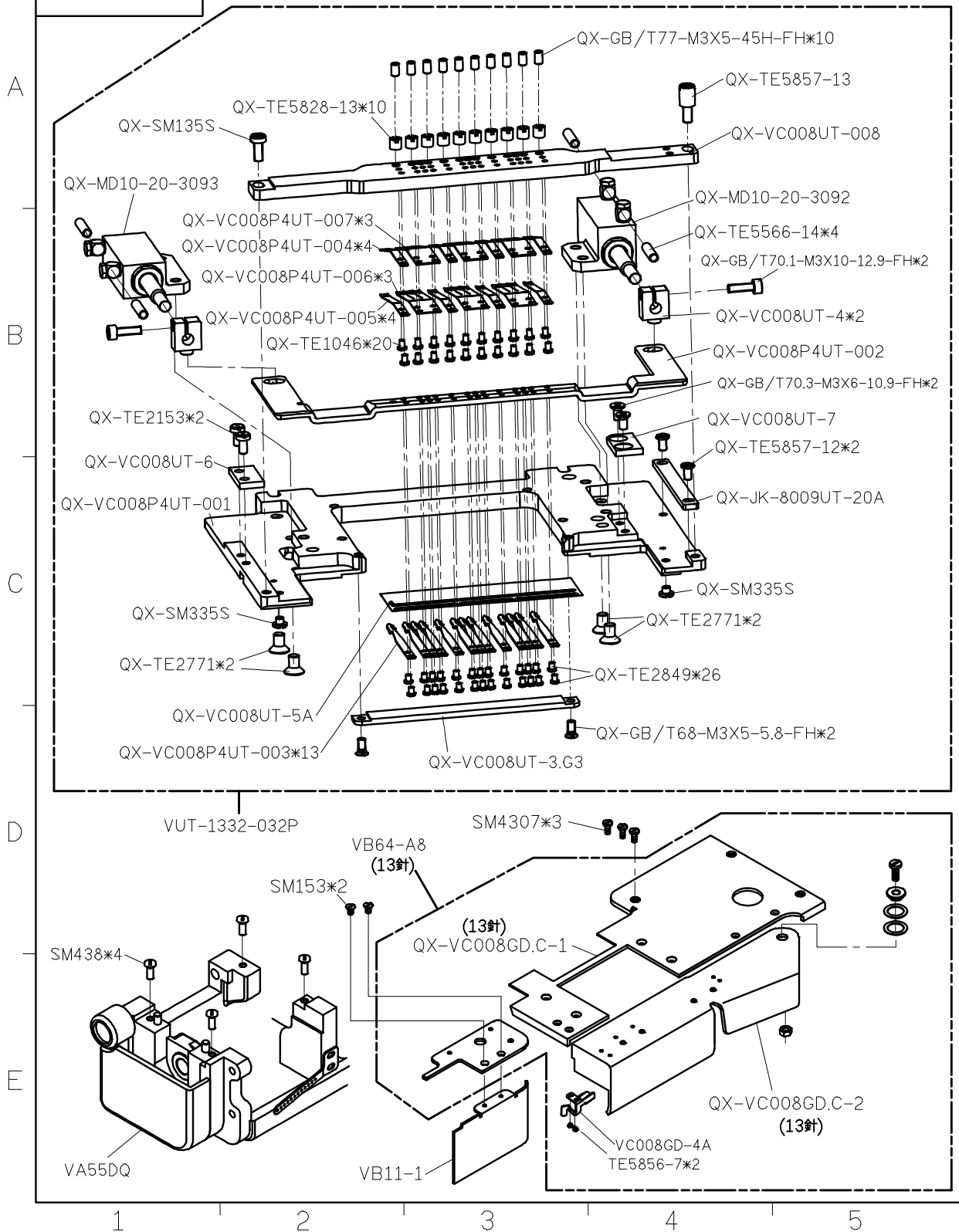
VUT-12064P

SM438*4

VA55DQ

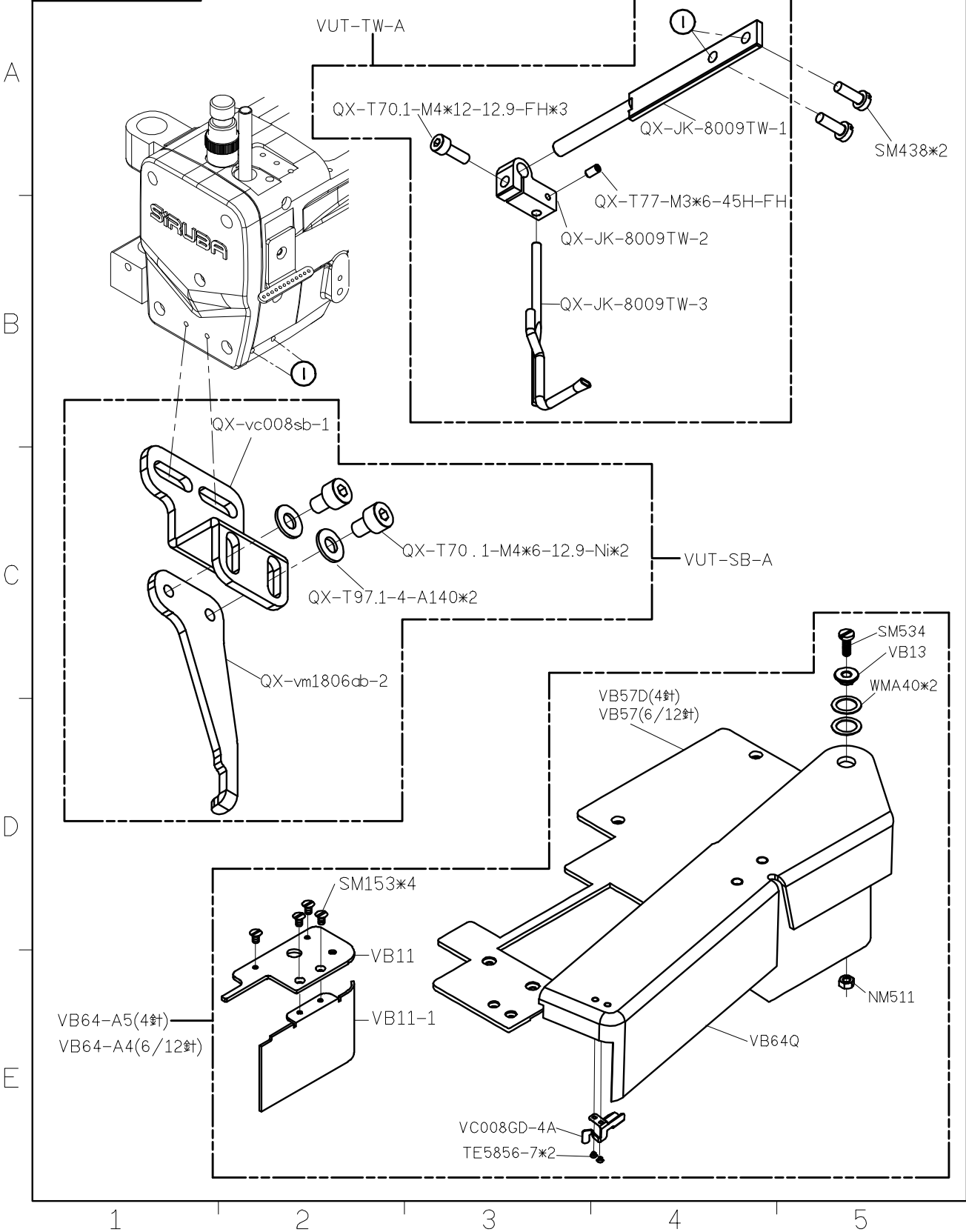
SIRUBA PARTS LIST	Series	Parts Group	Subclass / Remark	Page
	VC008A	VUT	● Use For 13 NEEDLE	4/10
				Date 2024/11/15

QX-VUT



SIRUBA PARTS LIST	Series	Parts Group	Subclass / Remark	Page
	VC008A	VUT		6/10
				Date
				2024/06/26

QX-VUT



SIRUBA PARTS LIST	Series	Parts Group	Subclass / Remark	Page
	VC008A	VUT	● Use For VAR	9/10
				Date
				2024/06/26

QX-VUT

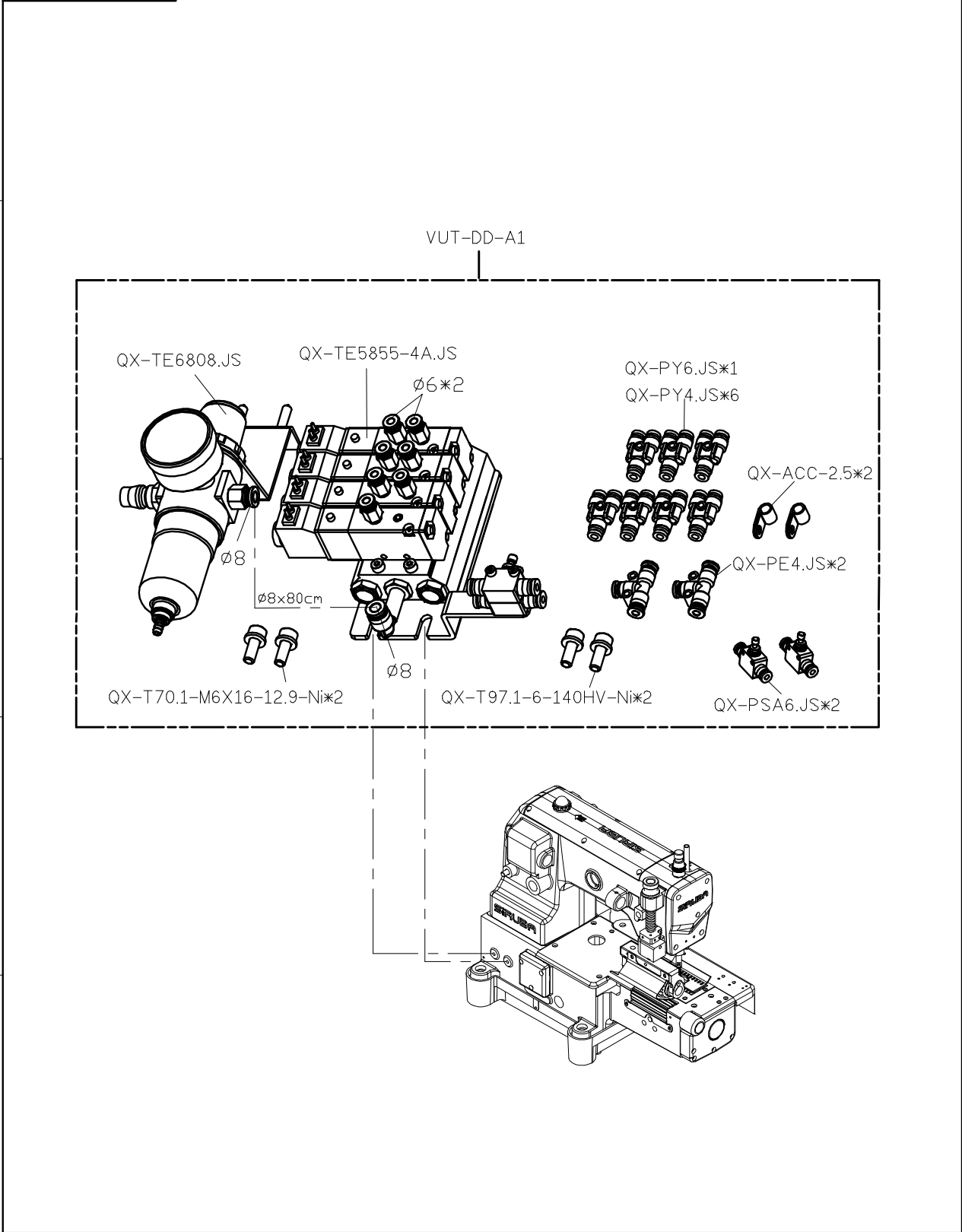
A

B

C

D

E



1

2

3

4

5

