

# SIRUBA

零件圖

PARTS LIST

## ■ LBHS-1790D Series

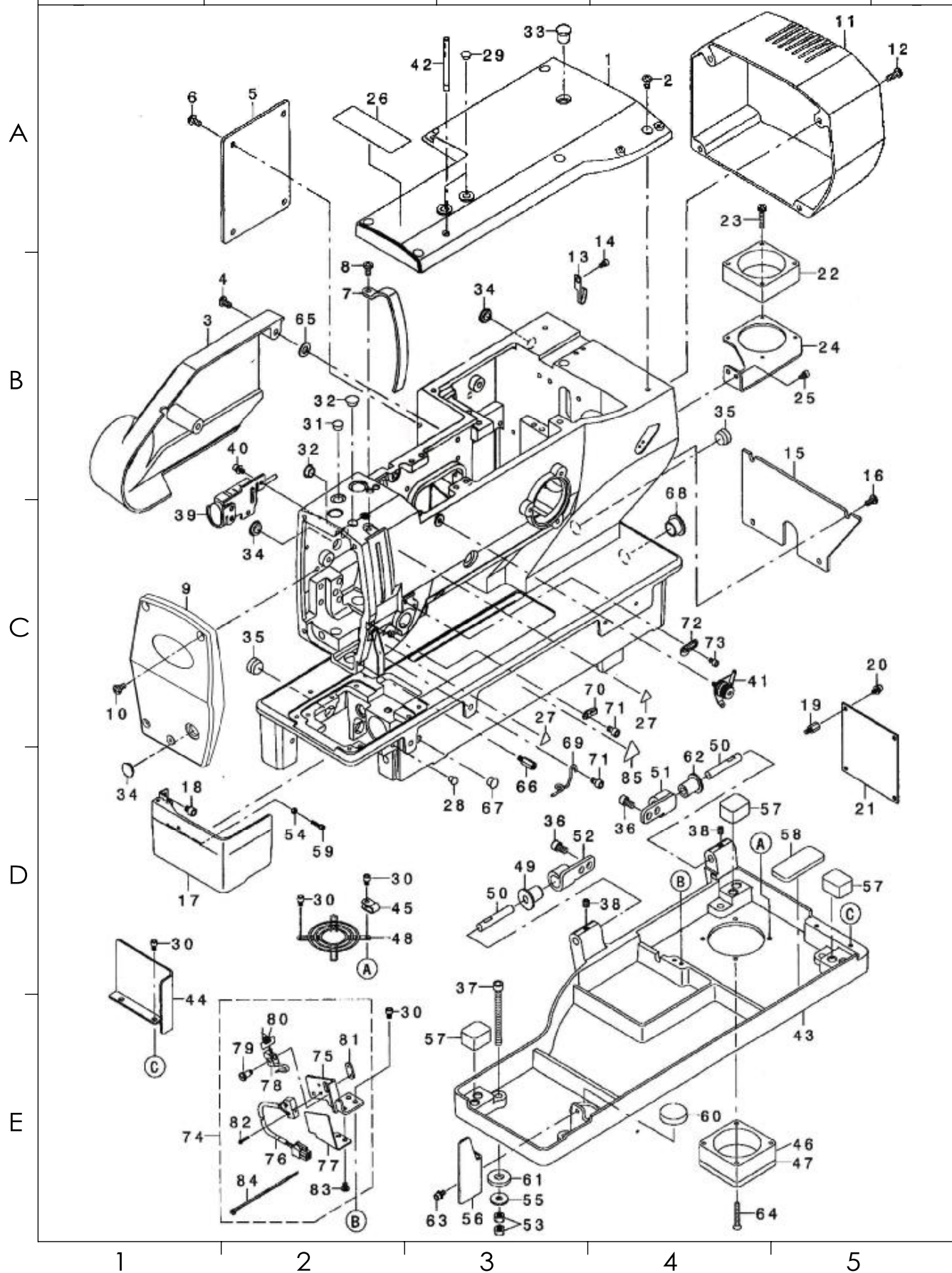


## CONTENTS

### 目 錄

A、Frame miscellaneous cover components(1)	1
頭部、外裝置部件 (1)	
B、Frame miscellaneous cover components(2)	5
頭部、外裝置部件 (2)	
C、Main shaft components	9
上軸部件	
D、Hook driving shaft components	11
下軸部件	
E、Presser feed components	13
壓腳、送料部件	
F、Needle bar rocking components	17
針杆搖動部件	
G、Needle thread trimmer components	19
上剪線部件	
H、Bobbin thread trimmer components	23
下剪線部件	
J、Cloth cutting knife components	27
切刀部件	
K、Operation box & position pedal components	29
操作面板、電控開關部件	
L、Control box components	31
控制箱部件	
M、Accessories	33
附件	
N、Thread stand components	35
線架裝置部件	
P、Special specifications components	37
特殊類型部件	
SP、Special specifications components	39
特殊類型部件	

<b>SIRUBA</b>  PARTS LIST	Series	Parts Group	Subclass Remark	Page
	<b>LBHS-1790D</b> Series	<b>01</b>		1 / 2
				Date
				2022/07/19



<b>SIRUBA</b> SEQUENCE LIST		Series		Parts Group	Subclass Remark	Page
		LBHS-1790D Series		01		1 / 2
						Date
						2022/07/19
	參照號	零部件序號	數量	零部件名稱	NAME OF PARTS	RM
A	1	CS79004153	1	上蓋	UPPER COCOVER	
	2	CS04051055	6	螺釘 M5X10	SCREW, PAN M5X10	
	3	CS79004154	1	左蓋板	LDFT COCOVER	
	4	CS04051055	2	螺釘 M5X10	SCREW, PAN M5X10	
	5	CS79004155	1	左蓋板 B	LDFT COCOVER B	
	6	CS04051055	4	螺釘 M5X10	SCREW, PAN M5X10	
	7	CS79004157	1	挑線杆防護罩	THREAD TAKE UP LEVER COVER	
	8	CS04051055	1	螺釘 M5X10	SCREW, PAN M5X10	
	9	CS79004156	1	前蓋板	FRONT COVER	
	10	CS04051055	3	螺釘 M5X10	SCREW, PAN M5X10	
B	11	CS79004159	1	馬達罩殼	MOTOR COVER	
	12	CS04051655	4	螺釘 M5X16	SCREW, PAN M5X16	
	13	CS79030409	1	油管固定架	LUBRICATING OIL WICK STOPPER	
	14	CS06040602	1	螺釘 M4X6	SCREW, PAN M4X6	
	15	CS79004161	1	後蓋板	REAR COVER	
	16	CS04051055	4	螺釘 M5X10	SCREW, PAN M5X10	
	17	CS79000956	1	旋梭防護板	HOOK OIL SHIELD COVER COMPL	
	18	CS06050652	2	螺釘 M5X6	SCREW, PAN M5X6	
	19	CS00033900	4	定位螺釘	STUD	
	20	CS06040892	4	螺釘組件	SCREW	
C	21	CS79003422	1	中基板組件	INT PCB ASS' Y	
	22	CS79005402	1	電路板風扇	HEAD FAN MOTOR A ASS' Y	
	23	CS04042581	2	螺釘組件	SCREW	
	24	CS79004367	1	風扇固定板	FAN FITTING PLATE	
	25	CS06040602	2	螺釘 M4X6	SCREW, PAN M4X6	
	26	CS03013000	1	安全標籤	SAFETY LABEL	
	27	CS03002000	2	注意標籤	ATTENTION SEAL	
	28	CS00550604	1	橡皮塞 5.5	PUBBER CAP, 5.5	
	29	CS00750404	2	橡皮塞 7.5	PUBBER CAP, 7.5	
	30	CS06040602	6	螺釘 M4X6	SCREW, PAN M4X6	
D	31	CS00950806	1	橡皮塞 9.5	PUBBER CAP, 9.5	
	32	CS01050504	2	橡皮塞 10.5	PUBBER CAP, 10.5	
	33	CS01120804	1	橡皮塞 11.2	PUBBER CAP, 11.2	
	34	CS01250406	3	橡皮塞 12.5	PUBBER CAP, 12.5	
	35	CS01550902	2	橡皮塞 15.5	PUBBER CAP, 15.5	
	36	CS06061002	4	螺釘 M6X10	SCREW, PAN M6X10	
	37	CS06067052	4	螺釘 M6X70	BOLT, SOCKET M6X70	
	38	CS08060612	2	螺釘 M6X6	SET SCREW, M6X6	
	39	CS79002354	1	開關元件	SWITCH ASM	
	40	CS06040892	2	螺釘 M4X8	SCREW, PAN M4X8	
E	41	CS79028764	1	張力控制組件	PRE-TENSION CONTROLLER ASM	
	42	CS79002504	1	過線軸	THREAD GUIDE BAR	
	43	CS79004158	1	油盤	BED BASE	
	44	CS79004160	1	底座蓋板	BED REAR COVER	
	45	CS00015000	1	線夾	CABLE CLAMP	
	46	CS79005403	1	油盤風扇	HEAD FAN	
	47	CS00005500	1	篩檢程式	FILTER	
	48	CS00003800	1	風扇擋板	FINGER GUARD	
	49	CS79006314	1	鉸鏈套	HINGE BUSH	
	50	CS79000604	2	鉸鏈銷	HINGE PIN	
	51	CS79000406	1	鉸鏈板 A	HINGE PLATE, A	
	52	CS79000505	1	鉸鏈板 B	HINGE PLATE, B	
	53	CS06060001	8	螺母 M6	NUT M6	
	54	CS06030001	1	螺母 M3X0.5	NUT M3X0.5	
	55	CS00612056	4	墊片 6.1X18.5X2	WAOHER 6.1X18.5X2	
	56	CS79043303	1	防油罩	OIL SHIELD	
	57	CS79008977	3	橡膠墊 C	RUBBER C	
	58	CS79008978	1	橡膠墊板 D	RUBBER D	
	59	CS06031402	1	螺釘	SCREW	
	60	CS02002855	1	橡膠	Z STOPPER RUBBER	

1

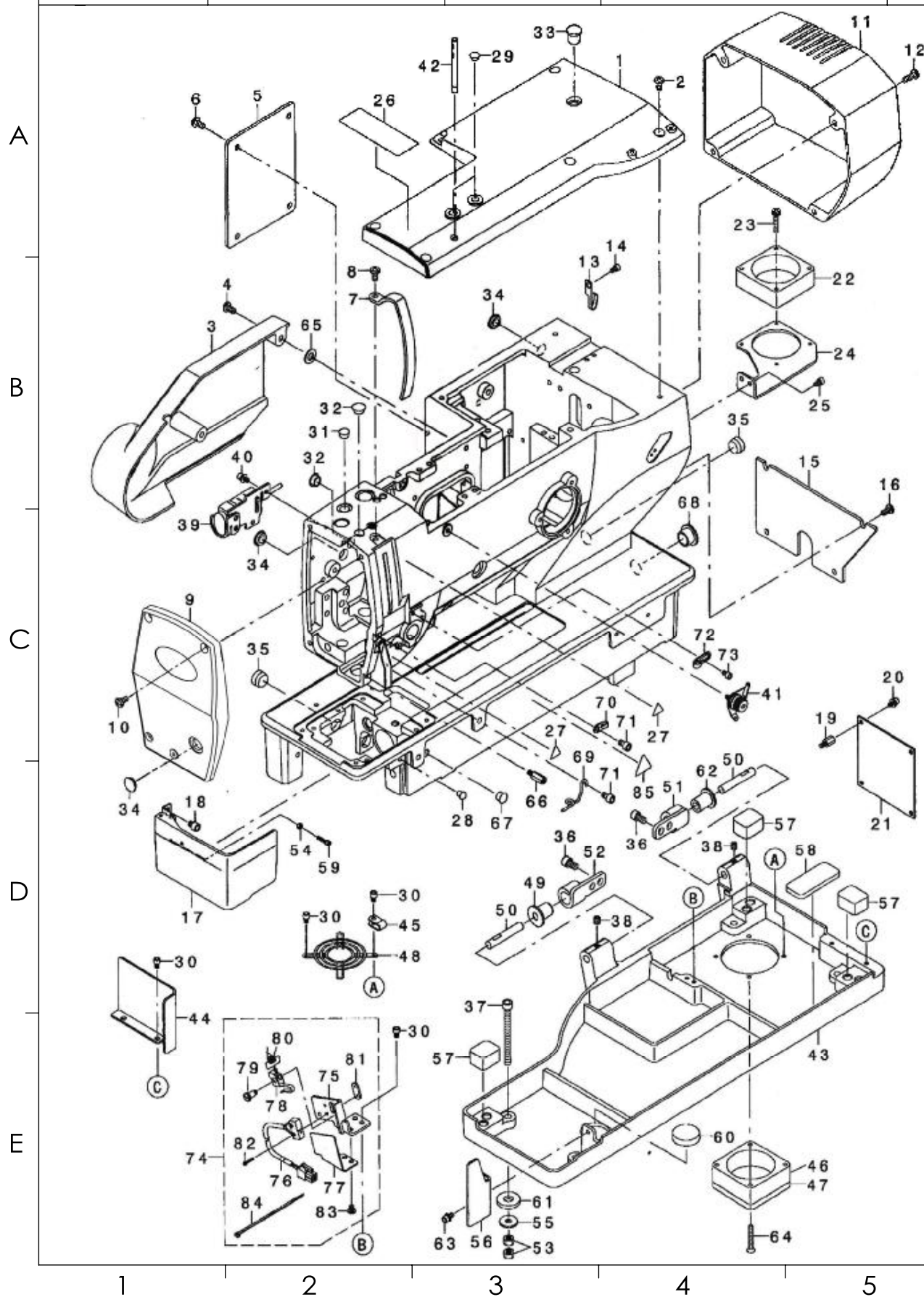
2

3

4

5

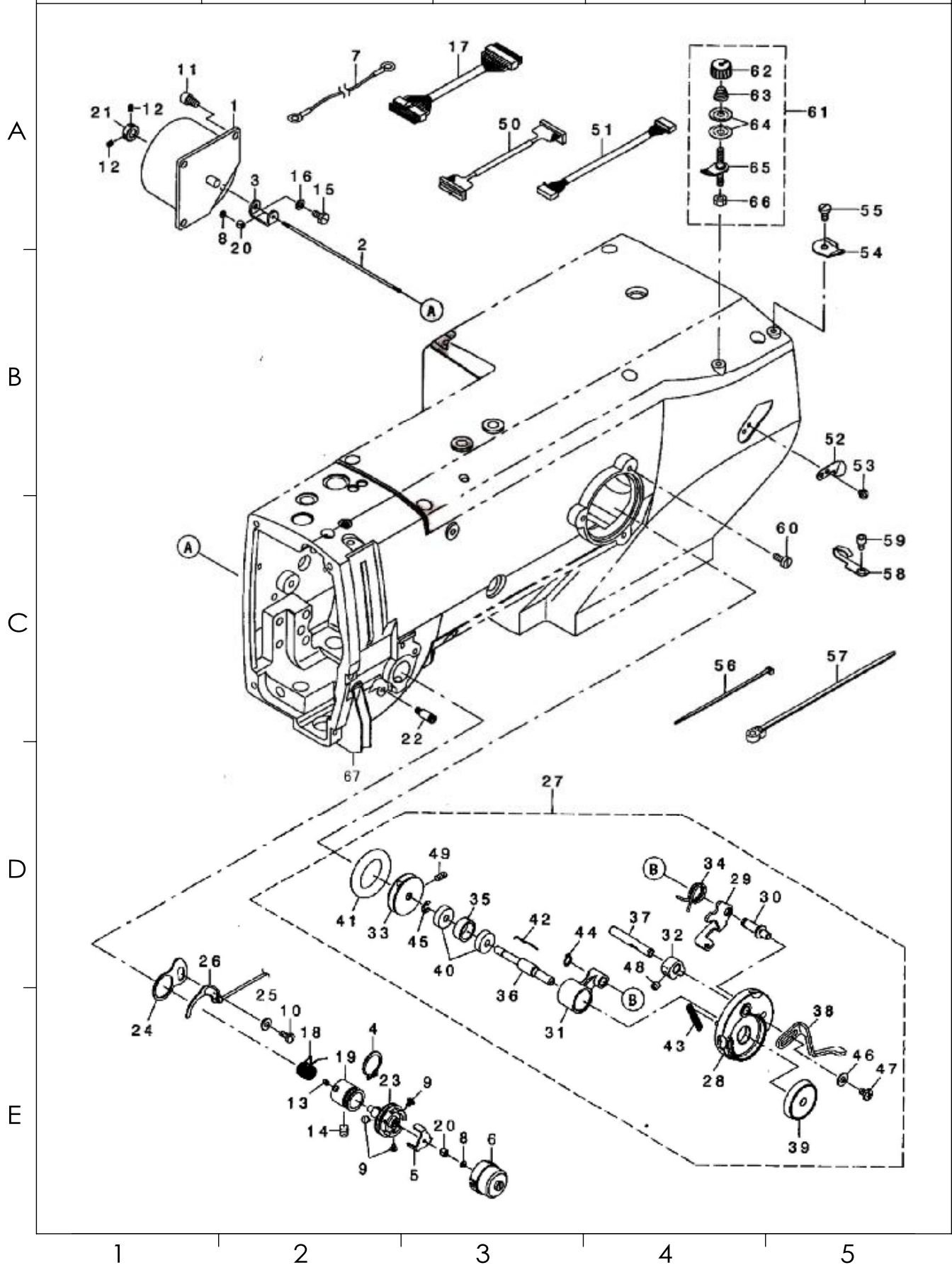
<b>SIRUBA</b>  PARTS LIST	Series	Parts Group	Subclass Remark	Page
	<b>LBHS-1790D</b> Series	<b>01</b>		2 / 2
				Date
				2022/07/19





<div> <div>SIRUBA</div> <div>SEQUENCE LIST</div> </div>	Series		Parts Group		Subclass Remark	Page
	LBHS-1790D		01			2 / 2
	Series					Date
						2022/07/19
	參照號	零部件序號	數量	零部件名稱	NAME OF PARTS	RM
A	61	CS06055555	4	橡膠墊片 B	RUBBER CUSHION (B)	
	62	CS79000703	1	橡膠鉸鏈	LUVRICATING OIL WICK STOPPER	
	63	CS06040892	1	螺釘 M4X10	SCREW, PAN M4X10	
	64	CS01043001	2	螺釘 M4X30	SCREW, PAN M4X30	
	65	CS01116804	2	橡膠墊片 C	RUBBER CUSHION (C)	
	66	CS03724715	1	加長螺釘	VCS STUD A	
	67	CS00850604	1	橡皮塞	PUBBER PLUG	
	68	CS01150490	1	橡皮塞	PUBBER PLUG	
	69	CS79005405	1	過線鉤	NEEDLE BAR THREAD GUIDE	
	70	CS79022208	1	左線鉤	TAKE-UP THREAD GUIDE B	
B	71	CS06050802	2	螺釘 M5X8	SCREW, PAN M5X8	
	72	CS79009037	1	右線鉤	TAKE-UP THREAD GUIDE A	
	73	CS06040602	1	螺釘 M4X6	SCREW, PAN M4X6	
	74	CS79003495	1	安全開關元件	SAFETY SWITCH ASS' Y	
	75	CS79016603	1	安全開關座	SAFETY SW BASE	
	76	CS79003496	1	電線	SAFETY SWITSH CORD ASS' Y	
	77	CS79016900	1	安全開關蓋板	SAFETY SWITSH XOVER	
	78	CS79038109	1	安全開關臂	SAFETY SWITSH ARM	
	79	CS79038307	1	軸位螺釘	SAFETY SWITSH ARM SHAFT	
	80	CS79038208	1	安全開關彈簧	SAFETY SWITSH SPRING	
C	81	CS79038406	1	安全開關螺母	SAFETY SWITSH NUT	
	82	CS04021201	2	螺釘 M2X12	SCREW, PAN M2X12	
	83	CS07090520	2	螺釘 SM9/64" -40	SCREW, PAN SM9/64" -40	
	84	CS09500B01	1	固定帶	CABLE BAND	
	85	CS03002000	1	注意標籤	ATTENTION LABEL	
D						
E						

<b>SIRUBA</b>  PARTS LIST	Series	Parts Group	Subclass Remark	Page
	<b>LBHS-1790D</b> Series	<b>02</b>		1 / 1
				Date
				2022/07/19



SIRUBA SEQUENCE LIST		Series		Parts Group	Subclass Remark	Page
		LBHS-1790D Series		02		1 / 1
						Date
						2022/07/19
	參照號	零部件序號	數量	零部件名稱	NAME OF PARTS	RM
A	1	CS79006261	1	夾線電磁鐵組件	ASSY AT SOLENOID	
	2	CS79006263	1	拉杆	AT SHAFT	
	3	CS79006264	1	松線支架	AT SHAFT HOLDER	
	4	CS01700001	1	軸用擋圈 C15	RETAINING RING, EXTERNAL C15	
	5	CS79006269	1	松線止動卡盤	DISK STOPPER	
	6	CS79006271	1	夾線器帽	DISK STOPPER HOLDER CAP	
	7	CS09019580	1	接地線	EARTH CABLE ASM	
	8	CS06020001	2	螺母 M2	NUT M2	
	9	CS00860400	3	螺釘 2.6X4	SCREW, PAN M2. 6X4	
	10	CS06040860	1	螺釘 M4X8	SCREW, PAN M4X8	
B	11	CS06050802	3	螺釘 M5X8	SCREW, PAN M5X8	
	12	CS08030412	2	螺釘 M3X4	SET SCREW, SOCKET (FT) M3X4	
	13	CS08030450	1	螺釘 M3X4	SET SCREW, (CP) M3X4	
	14	CS08060612	1	螺釘 M6X6	SET SCREW, SOCKET (FT) M6X6	
	15	CS09040800	1	螺栓 M4X8	BOLT, SOCKET M4X8	
	16	CS00410002	1	彈簧墊片 M4	WASHER, SPRING M4	
	17	CS79005397	1	電機連接線	MAIN INT XORD A ASS' Y	
	18	CS79006104	1	挑線彈簧	THREAD TAKE-UP SPRING	
	19	CS79006268	1	夾線座	TENSION BRACKET	
	20	CS79006270	2	卡圈	THREAD TENSION SHAFT COLLAR	
C	21	CS79055402	1	定位環	THRUST COLLAR	
	22	CS79004252	1	螺柱	UTT SUSPENSION SCREW 9	
	23	CS79006265	1	緊線器組件	ASSY THREAD TENSION POST	
	24	CS02702210	1	導板	GUIDE PLATE	
	25	CS02703210	1	尼龍墊片	BUSHING	
	26	CS79003499	1	接觸片	THREAD BREAK DETECTOR A	
	27	CS79011143	1	繞線器組件	ASSY BTW	
	28	CS79060109	1	繞線基座	BTW BASE	
	29	CS79060208	1	控制板	BTW CAM PLATE	
	30	CS79060307	1	繞線定位軸	BTW BASE SHAFT	
D	31	CS79060406	1	繞線轉動曲柄	BTW SHAFT BASE	
	32	CS79060505	1	轉動卡頭	BTW CAM LEVER	
	33	CS79060604	1	繞線驅動輪	BTW WHEEL	
	34	CS79011144	1	彈簧	BTW TORSION SPRING	
	35	CS79060802	1	擋圈	BTW BEARING SPACER	
	36	CS79011145	1	繞線器軸	BTW SHAFT	
	37	CS79011146	1	梭芯壓杆軸	BTW LEVER SHAFT	
	38	CS79021933	1	梭芯壓杆	BTW LEVER	
	39	CS79061206	1	梭芯墊片	BTW SPACER	
	40	CS79061305	2	軸承	BALL BEARING	
E	41	CS79061503	1	橡皮圈	BOBBIN WINDER RUBBER BAND	
	42	CS79061602	1	梭芯彈簧	BOBBIN SPRING	
	43	CS79061701	1	彈簧	BTW SPRING	
	44	CS00560711	1	軸用擋圈 C5	RETAINING RING, EXTERNAL C5	
	45	CS00400000	1	擋圈 E4	RETAINING RING E4	
	46	CS00450826	1	平墊圈 4.5X10X0.8	WAOHER PLAIN 6. 1X18. 5X2	
	47	CS05040655	1	螺釘 M2X12	SCREW, PAN M2X12	
	48	CS08050502	1	螺釘 M5X5	SET SCREW, SOCKET (FT) M5X5	
	49	CS08040802	2	螺釘 M4X8	SET SCREW, SOCKET (FT) M4X8	
	50	CS79005398	1	信號連接線	MAIN INT CORD B ASS' Y	
	51	CS79005399	1	電磁鐵連接線	MAIN INT CORD D ASS' Y	
	52	CS79002300	1	切線刀	THREAD CUTTER	
	53	CS04030581	2	切線刀螺釘 M3X5	COMBINATION SCREW M3X5	
	54	CS03162555	1	導線器	THREAD GUIDE	
	55	CS07110840	1	螺釘 SM11/64" -40	SCREW SM11/64" -40	
	56	CS09500801	10	電線夾	BINDER	
	57	CS00015100	2	電線夾	BINDER	
	58	CS79030409	3	潤滑油管固定片	LUBRICATING OIL WICK STOPPER	
	59	CS06040602	3	螺釘 M4X6	SCREW, PAN M4X10	
	60	CS06041050	3	螺釘 M4X10	SCREW, PAN M4X10	

1

2

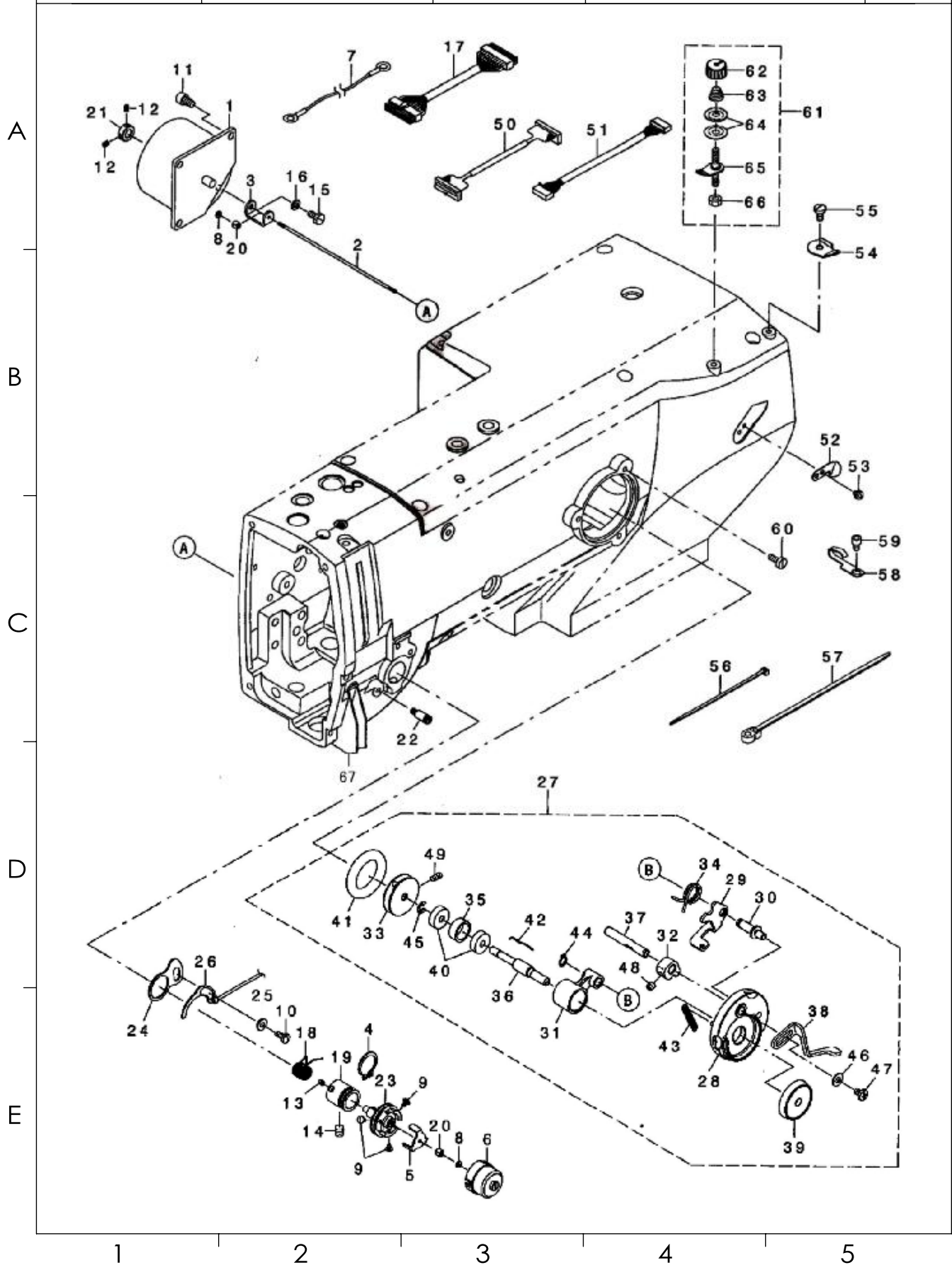
3

4

5



<b>SIRUBA</b>  PARTS LIST	Series	Parts Group	Subclass Remark	Page
	<b>LBHS-1790D</b> Series	<b>03</b>		1 / 1
				Date
				2022/07/19



<b>SIRUBA</b> SEQUENCE LIST		Series		Parts Group	Subclass Remark	Page
		LBHS-1790D Series		03		1 / 1
						Date
						2022/07/19
A	參照號	零部件序號	數量	零部件名稱	NAME OF PARTS	RM
	61	CS79029481	1	卷線器夾線組件	BOBBIN WINDER TENSION ASSY	
	62	CS79072402	1	壓線螺母	TENSION NUT	
	63	CS79093606	1	夾線彈簧	TENSION SPRING	
	64	CS03214047	2	夾線盤	DISC, TENSION	
	65	CS79029473	1	過線銷組件	BOBBIN THREAD TENSION ROD ASM	
	66	CS06110310	1	螺母 SM11/64" -40	NUT SM11/64" -40	
	67	CS79010002	1	導線槽	THREAD GUIDE	
B						
C						
D						
E						
	1	2	3	4	5	

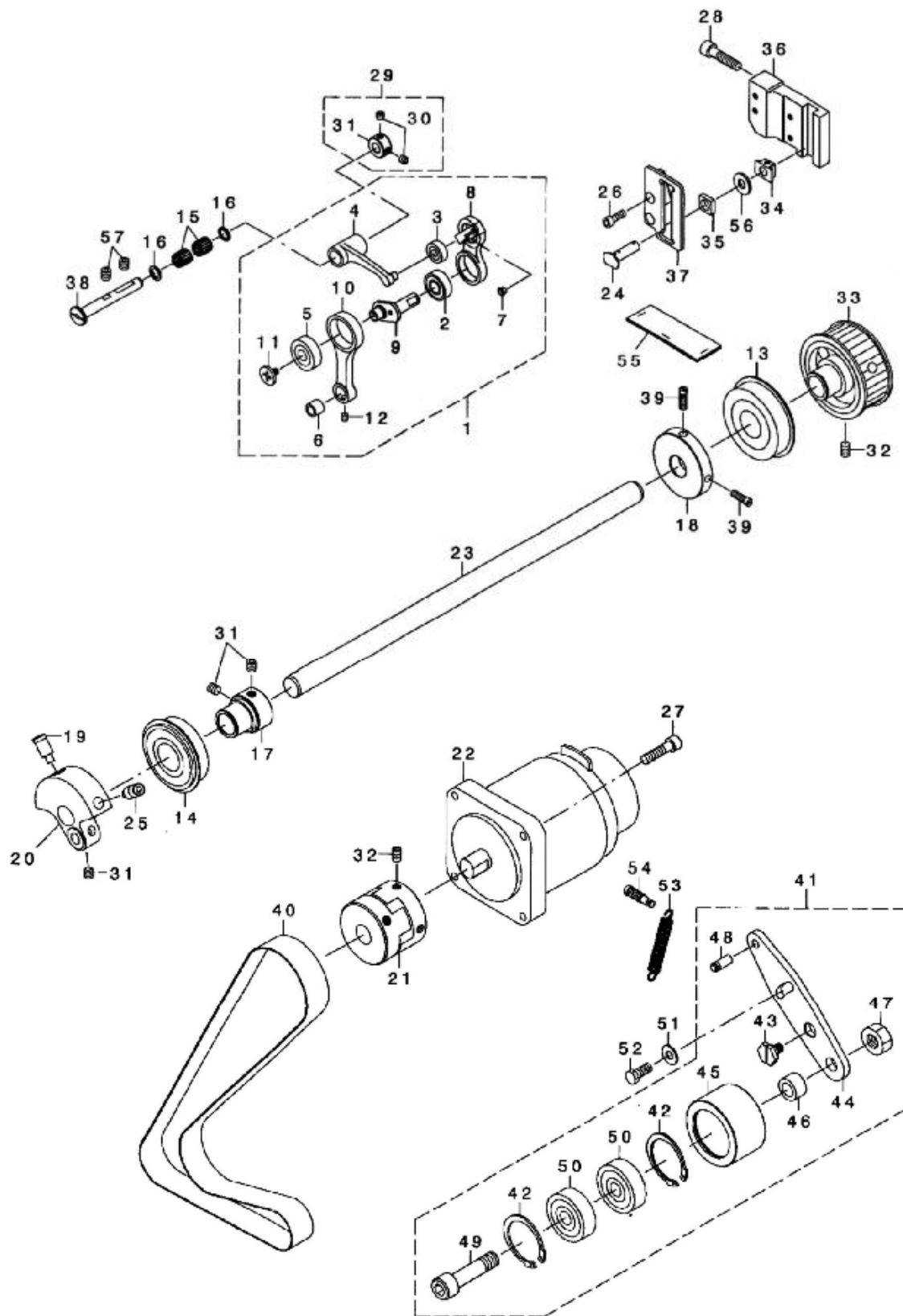
A

B

C

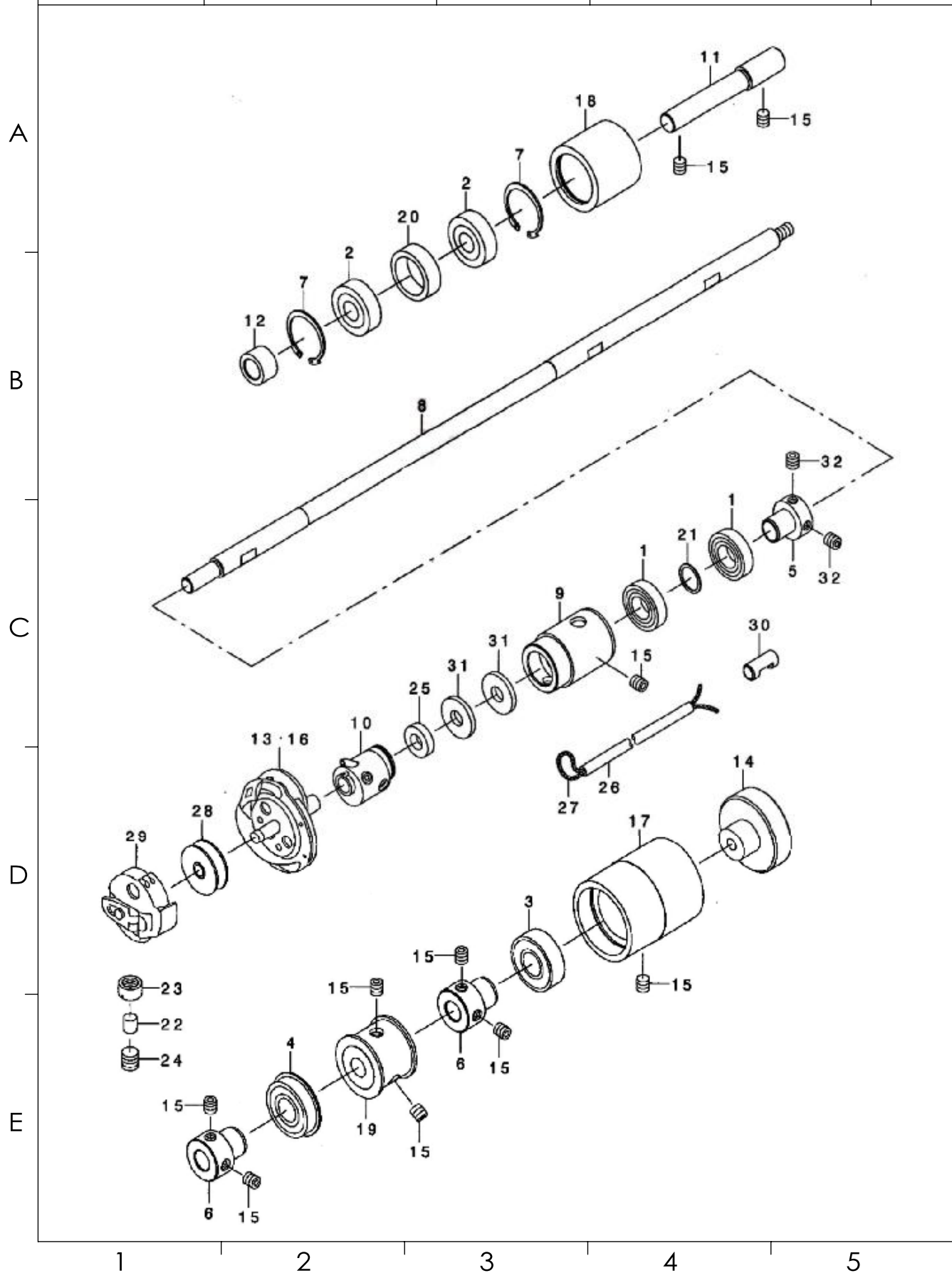
D

E



<b>SIRUBA</b> SEQUENCE LIST		Series		Parts Group	Subclass Remark	Page
		LBHS-1790D Series		04		1 / 1
						Date
						2022/07/19
	參照號	零部件序號	數量	零部件名稱	NAME OF PARTS	RM
A	1	CS79004178	1	挑線組件	THREAD TAKE UP ASM	
	2	CS01080023	1	軸承 698LB	BALL BEARING , ARDIAL 698LB	
	3	CS01050018	1	軸承 605LB	BALL BEARING , ARDIAL 605LB	
	4	CS79004177	1	挑線連杆	THREAD TAKE UP CRANNK	
	5	CS01080004	1	軸承 608	BALL BEARING , ARDIAL 608	
	6		1	銅套		
	7	CS01908505	1	過線套	THREAD PASS BUSH	
	8	CS79004173	1	挑線杆組件	LINK TAKE UP	
	9	CS79004174	1	挑線曲柄	NEEDLE BAR CRANK	
	10	CS79004175	1	針杆連杆組件	NEEDLE BAR CRANK ROD	
B	11	CS01903552	1	螺釘 SM3.57-40L	SCREW,SM3.57-40L	
	12	CS08040412	1	螺釘 M4X4	SET SCREW,SOCKET(FT)M4X4	
	13	CS01200008	1	軸承 6304Z	BALL BEARING , ARDIAL 6304Z	
	14	CS01200020	1	軸承 6204	BALL BEARING , ARDIAL 6204	
	15	CS03070002	2	滾針軸承	NEEDLE BEARING	
	16	CS79091204	2	封油墊片	BEARING SUPPORT	
	17	CS79005207	1	軸承固定套	BEARING HOLDER	
	18	CS79036400	1	繞線輪	BOBBIN WINDER DRIVING WHEEL	
	19	CS79004171	1	固定螺釘	COUNTER WEIGHT SCREW	
	20	CS79004170	1	針杆曲柄	COUNTER WEIGHT	
C	21	CS79004309	1	傳動連接塊元件	COUPLING	
	22	CS79028015	1	主軸伺服電機	AC SERVO MOTOR	
	23	CS79004167	1	上軸	MAIN SHAFT	
	24	CS02704208	1	滑塊軸	NEEDLE CRANK SHAFT	
	25	CS08081652	1	螺栓 M8X16	BOLT,SOCKET M8X16	
	26	CS06041202	2	螺栓 M4X12	S OLT,SOCKET M4X12	
	27	CS06052002	4	螺栓 M5X20	OLT,SOCKET M5X20	
	28	CS06062502	3	螺栓 M6X25	OLT,SOCKET M6X25	
	29	CS79010434	1	擋圈組件	THRUST COLLAR ASM	
	30	CS08050412	2	螺釘 M5X4	SET SCREW,SOCKET(FT)M5X4	
D	31	CS79010435	1	螺釘 M6*6	SET SCREW COLLAR M6*6	
	32	CS08060812	6	螺釘 M6X8	SET SCREW,SOCKET(FT)M6X8	
	33	CS79004168	1	上同步輪組件	SPROCKET A	
	34	CS79004206	1	導向滑塊	SQUARE BLOCK	
	35	CS79008426	1	導向滑塊	SQUARE BLOCK	
	36	CS79006307	1	針杆導向板	SQUARE BLOCK GUIDE	
	37	CS79006308	1	針杆導向板B	SQUARE BLOCK GUIDE B	
	38	CS79006300	1	挑線連杆軸	THREAD TAKE UP CTANK SHAFT	
	39	CS06111440	2	螺釘 M5X8	SCREW,M5X8	
	40	CS79004169	1	同步帶 810-3GT-20	TIMING BELT 810-3GT-20	
E	41	CS79004182	1	皮帶張緊輪組件	IDLER ASM	
	42	CS03781518	2	孔用擋圈 C37	RETAINING RING,INTERNAL C37	
	43	CS79004185	1	軸位螺釘	HINGE SCREW	
	44	CS79004184	1	張力輪安裝板	IDLER FIXED PLATE	
	45	CS79004183	1	張力輪	IDLER PULLEY	
	46	CS79010504	1	擋圈	INTERMEDIATE SPROCKET WASHER	
	47	CS06100001	1	螺母 M10	NUT M10	
	48	CS79050804	1	掛簧銷	FEED LEVER SPRING HOOK	
	49	CS06104352	1	螺栓 M10X42.5	OLT,SOCKET M6X42.5	
	50	CS01100007	2	軸承 6300Z	BALL BEARING , ARDIAL 6300Z	
	51	CS00621046	1	墊片	WASHER	
	52	CS09061403	1	螺釘 M6X14	BOLT,M6X14	
	53	CS79004192	1	調整彈簧	ADJUSTING SPRING	
	54	CS79004179	1	掛簧螺釘	SUSPENSION SCREW	
	55	CS79011517	1	潤滑氈	NEEDLE BAR CRANK FELT	
	56	CS79008423	1	墊片	WASHER	
	57	CS08060612	6	螺釘 M6X6	SET SCREW,SOCKET(FT)M6X6	

<b>SIRUBA</b>  PARTS LIST	Series	Parts Group	Subclass Remark	Page
	<b>LBHS-1790D</b> Series	<b>05</b>		1 / 1
				Date
				2022/07/19





<div> <div>SIRUBA</div> <div>SEQUENCE LIST</div> </div>		Series		Parts Group	Subclass Remark	Page
		LBHS-1790D Series		05		1 / 1
						Date
						2022/07/19
<div> <div>A</div> <div>B</div> <div>C</div> <div>D</div> <div>E</div> </div>	參照號	零部件序號	數量	零部件名稱	NAME OF PARTS	RM
	1	CS01120016	1	軸承 6901LB	BALL BEARING, ARDIAL 6901LB	
	2	CS01100006	1	軸承 6000V	BALL BEARING, ARDIAL 6000V	
	3	CS01150002	1	軸承 6202Z	BALL BEARING, ARDIAL 6202Z	
	4	CS01150015	1	軸承 6202DV	BALL BEARING, ARDIAL 6202DV	
	5	CS79004188	1	軸承套	BALL BEARING BUSH	
	6	CS79036204	2	軸承套	BALL BEARING BUSH	
	7	CS02791218	2	孔用擋圈 C27	RETAINING RING, INTERNAL C27	
	8	CS79004186	1	下軸	HOOK DRIVING SHAFT	
	9	CS79004187	1	下軸前軸套	HOOK DRIVING SHAFT METAL	
	10	CS79029660	1	旋梭連接套元件	HOOK SLEEVE ASM	
	11	CS79010306	1	中同步輪軸	INTERMEDIATE SPROCKET SHAFT	
	12	CS79010504	1	擋圈	INTERMEDIATE SPROCKET WASHER	
	13	CS79029066	1	旋梭 (790)	HOOK COMPL	
	14	CS08039870	1	手輪	CROWN KNOB	
	15	CS08060612	10	螺釘 M6X6	SET SCREW, SOCKET (FT) M6X6	
	16	CS79082065	1	旋梭 (791K)	HOOK COMPL (K)	
	17	CS79004401	1	下軸後軸套	BEARING SUPPORT	
	18	CS79004180	1	中同步輪	SPROCKET B	
	19	CS79004181	1	下同步輪組件	SPROCKET C	
	20	CS79010405	1	墊圈	INTERMEDIATE SPROCKET RING	
	21	CS79006317	1	墊圈	WASHER	
	22	CS79006322	1	調整杆	AD JUSTING SHAFT	
	23	CS79006312	1	調整螺母	AD JUSTING NUT	
	24	CS08080812	1	旋梭油量調節螺釘 M8X8	SET SCREW, SOCKET (FT) M8X8	
	25	CS79006320	1	油氈	FELT	
	26	CS79030007	1	油管	TUBE	
	27	CS02020000	1	油線	OIL WICK	
	28	CS01811771	1	梭芯	BOBBIN	
	29	CS79029769	1	梭殼	BOBBIN CASE ASM	
	30	CS79006321	1	油量控制架	PIPE	
	31	CS79011355	2	油氈	OIL FILTER	
	32	CS08050502	2	螺釘 M5X5	SET SCREW, SOCKET (FT) M5X5	

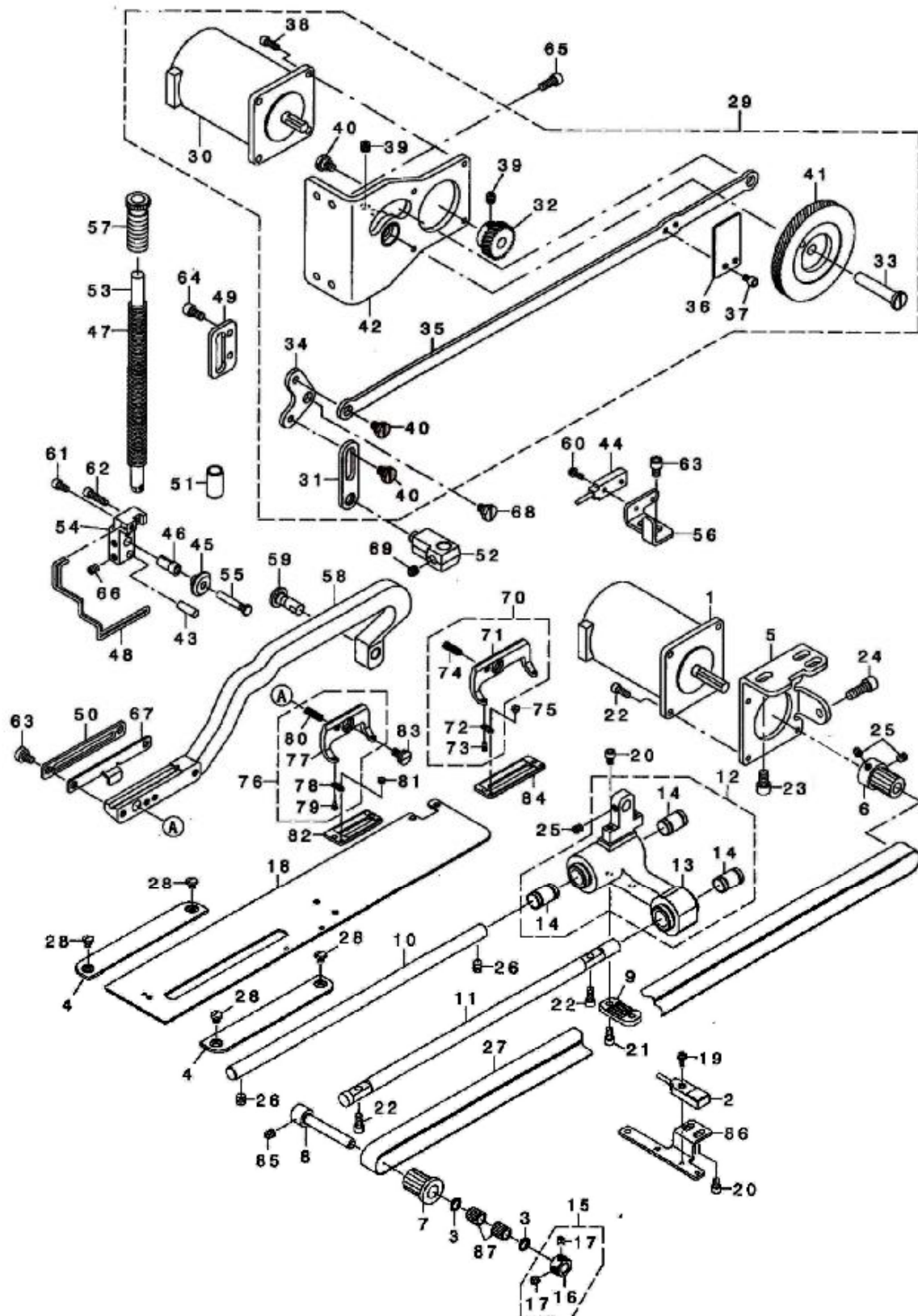
A

B

C

D

E



SIRUBA SEQUENCE LIST		Series		Parts Group	Subclass Remark	Page
		LBHS-1790D Series		06		1 / 2
						Date
						2022/07/19
A	參照號	零部件序號	數量	零部件名稱	NAME OF PARTS	RM
A	1	CS79005372	1	送布馬達	PEED MOTOR ASS' Y	
	2	CS79005378	1	送布感測器	PEED SENSOR ASS' Y	
	3	CS79091204	2	封油墊片	BEARING SUPPORT	
	4	CS79009202	2	固定板	THROAT PLATE BASE COVER	
	5	CS79004194	1	送料步進電機固定架	MOTOR BRACKET	
	6	CS79004196	1	同步輪組件 B	PULLEY B	
	7	CS79004197	1	同步輪組件 C	PULLEY C	
	8	CS79004198	1	同步輪軸	SUPPORT SHAFT	
	9	CS79004200	1	固定板	TIMING BELT HOLDER	
	10	CS79004201	1	支架軸	FEED SHAFT	
B	11	CS79022121	1	送布支架導向軸	FEED GUIDE SHAFT	
	12	CS79004203	1	送布支架組件	FEED BASE ASM	
	13	CS79004204	1	送布支架	FEED BASE	
	14	CS07100002	3	送布支架軸承	SLIDE BEARING	
	15	CS79010434	1	擋圈組件	THRUST COLLAR ASM	
	16	CS79010435	1	擋圈	SET SCREW COLLAR	
	17	CS08050412	2	螺釘 M5X4	SCREW, PAN M5X4	
	18	CS79004205	1	送料板	FEED PLATE	
	19	CS04031081	1	螺釘 (帶墊圈) 3X10	SCREW, PAN(S/P WASHER) M3X10	
	20	CS06040602	4	螺栓 M4X6	OLT, SOCKET M4X6	
C	21	CS06040802	2	螺栓 M4X8	OLT, SOCKET M4X8	
	22	CS06041002	6	螺栓 M4X10	OLT, SOCKET M4X10	
	23	CS06061002	3	螺栓 M6X10	OLT, SOCKET M6X10	
	24	CS06061802	1	螺栓 M6X18	OLT, SOCKET M6X18	
	25	CS08050502	3	螺釘 M5X5	SET SCREW, SOCKET (FT) M5X5	
	26	CS08060612	2	螺釘 M6X6	SET SCREW, SOCKET (FT) M6X6	
	27	CS79004199	1	同步帶 708-3GT-15	TIMING BELT 708-3GT-15	
	28	CS05040550	4	螺釘 M4X5	SCREW, PAN M4X5	
	29	CS79004266	1	抬壓腳組件	ASSY PBL GEAR MODULE	
	30	CS79005373	1	抬壓腳步進電機	CLAMP MOTOR ASS' Y	
D	31	CS79004273	1	壓腳導向連接板	PBL FRONT LINK	
	32	CS79004291	1	壓腳升降齒輪 S	PBL GEAR S	
	33	CS79004275	1	齒輪軸	PBL GEAR SHAFT	
	34	CS79004282	1	壓腳升降擺動板	PBL L LINK	
	35	CS79004270	1	壓腳升降拉杆	PBL LONG ROD	
	36	CS79004278	1	感測器板	PBL SENOR PLATE	
	37	CS06040602	2	螺栓 M4X6	OLT, SOCKET M4X6	
	38	CS06041002	4	螺栓 M4X10	OLT, SOCKET M4X10	
	39	CS08060552	5	螺釘 M6X5	SCREW, PAN M6X5	
	40	CS00800326	4	軸位螺釘 8	SHOULDER SCREW D8 H3.2	
E	41	CS79004289	1	壓腳升降齒輪 A 組件	ASSY PBL GEARL	
	42	CS79004267	1	壓腳電機安裝板組件	ASSY PBL MOTOR BASE	
	43	CS79059008	1	壓腳支架固定軸	PIN, SHORT	
	44	CS79005379	1	感測器	CLAMP SENSOR ASS' Y	
	45	CS79019551	1	滑輪	SLIDE ROLLER	
	46	CS79026308	1	襯套	COLLAR	
	47	CS79004281	1	壓腳杆彈簧	PBL COIL SPRING	
	48	CS79004285	1	壓護簧	PBL FINGER GUARD	
	49	CS79004276	1	壓腳杆滑槽	PBL GUIDE	
	50	CS79004280	1	壓腳前後送料導向板	PBL LIFTING PLATE	
	51	CS79004279	1	壓腳杆套	PBL METAL	
	52	CS79004274	1	壓腳杆升降支架	PBL POSITION BRACKET	
	53	CS79004271	1	壓腳軸	PBL PRESSER BAR	
	54	CS79004283	1	滑輪支架	PBL POLLER BASE	
	55	CS79004286	1	滑輪軸	PBL ROLLER SHAFT	
	56	CS79004277	1	感測器安裝板	PBL SENSOR BASE	
	57	CS79004272	1	彈簧調節螺母	PBL SPRING REGULATOR	
	58	CS79004287	1	壓腳支架	PBL WORK CLAMP ARM	
	59	CS79004288	1	曲柄軸	PBL WORK CLAMP ARM SHAFT	
	60	CS04031081	1	螺釘 M3X10	SCREW, PAN M3X10	

1

2

3

4

5

SiRUBA SEQUENCE LIST		Series		Parts Group	Subclass Remark	Page
		LBHS-1790D Series		06		2 / 2
						Date
						2022/07/19
	參照號	零部件序號	數量	零部件名稱	NAME OF PARTS	RM
A	61	CS06040802	1	螺栓 M4X8	OLT, SOCKET M4X8	
	62	CS06041602	1	螺栓 M4X16	OLT, SOCKET M4X16	
	63	CS06050800	2	螺釘 M5X8	SCREW, PAN M5X8	
	64	CS06051002	4	螺栓 M5X10	OLT, SOCKET M5X10	
	65	CS06051202	4	螺栓 M5X12	OLT, SOCKET M5X12	
	66	CS08050602	2	螺釘 M5X6	SCREW, PAN M5X6	
	67	CS79020310	1	剪線板	UTT CLOSE CAM B	
	68	CS00800326	1	軸位螺釘 8	SHOULDER SCREW D8 H3.2	
	69	CS08060552	1	螺釘 M6X5	SCREW, PAN M6X5	
	70	CS01511772	1	壓腳組件 (K)	WORK CLAMP CHECK HOLDER ASM (K)	
B	71	CS01511772	1	壓腳板座	WORK CLAMP CHECK HOLDER	
	72	CS01509761	2	壓腳彈簧板	WORK CLAMP CHECK SPRING	
	73	CS01510771	2	壓腳彈簧定位銷	WORK CLAMP CHECK SPRING SET PI	
	74	CS01512761	1	壓腳板座彈簧	WORK CLAMP CHECK HOLDER SPRING	
	75	CS06060210	2	螺釘 SM3/32" -56	SCREW, SM3/32" -56	
	76	CS01511771	1	壓腳組件 (S)	WORK CLAMP CHECK HOLDER ASM (S)	
	77	CS01511771	1	壓腳板座	PRESSER FOOT	
	78	CS01509761	2	壓腳彈簧板	WORK CLAMP CHECK SPRING	
	79	CS01510771	2	壓腳彈簧定位銷	WORK CLAMP CHECK SPRING SET PI	
	80	CS01512761	1	壓腳板座彈簧	WORK CLAMP CHECK HOLDER SPRING	
C	81	CS06060210	2	螺釘 SM3/32" -56	SCREW, SM3/32" -56	
	82	CS01552781	1	壓腳板 (S)	PRESSER (S)	
	83	CS00790203	1	壓腳螺釘	HINGE SCREW D7.94 H2	
	84	CS01508772	1	壓腳板 (K)	WORK CLAMP CHECK (2K)	
	85	CS08050502	1	螺釘 M5X5	SET SCREW, SOCKET (FT) M5X5	
	86	CS79004195	1	感測器定位板	SENSOR PLATE	
	87	CS03070002	2	滾針軸承	NEEDLE BEARING	
D						
E						

1

2

3

4

5

<b>SIRUBA</b>  PARTS LIST	Series	Parts Group	Subclass Remark	Page
	<b>LBHS-1790D</b> Series	<b>07</b>		1 / 1
				Date
				2022/07/19

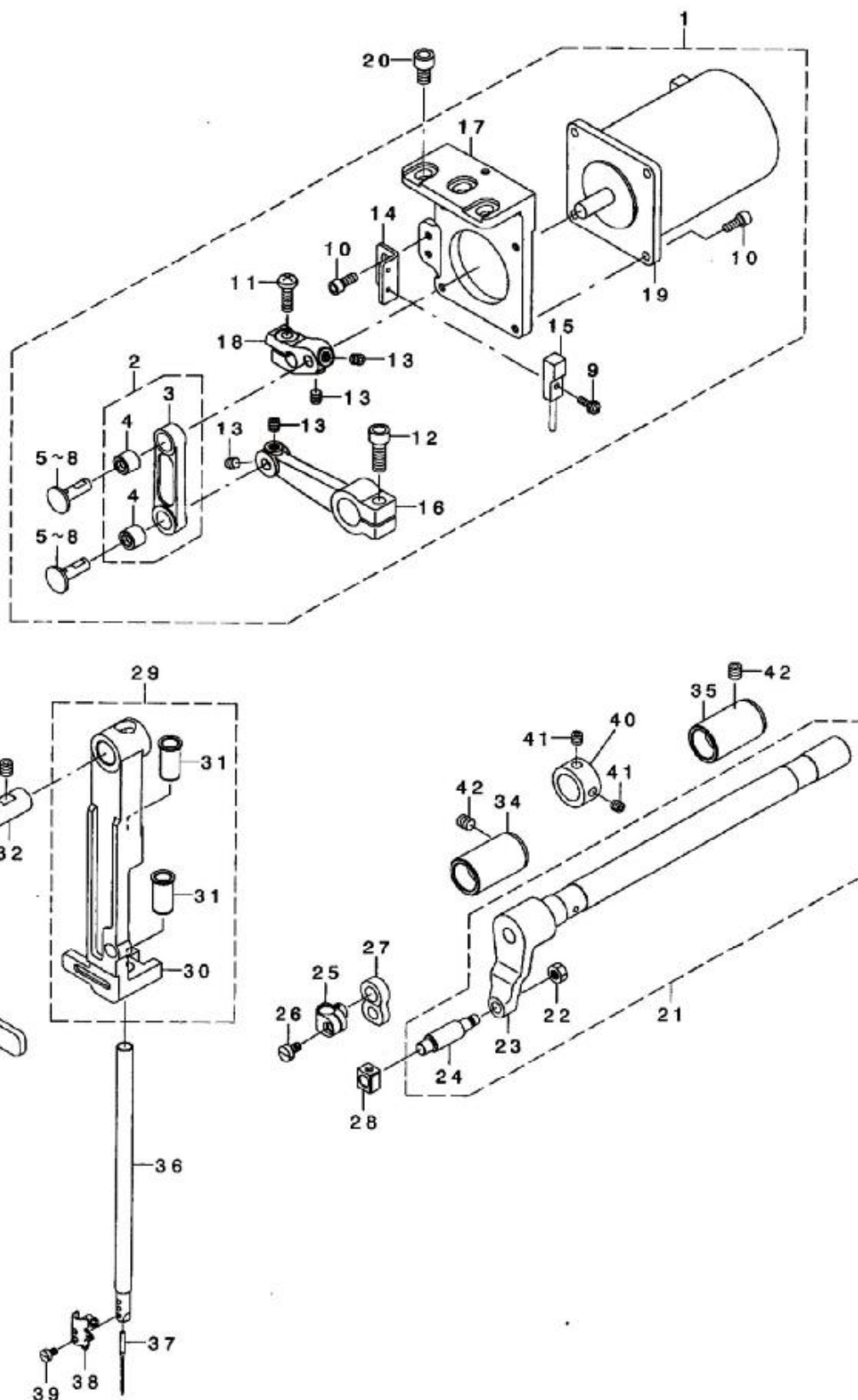
A

B

C

D

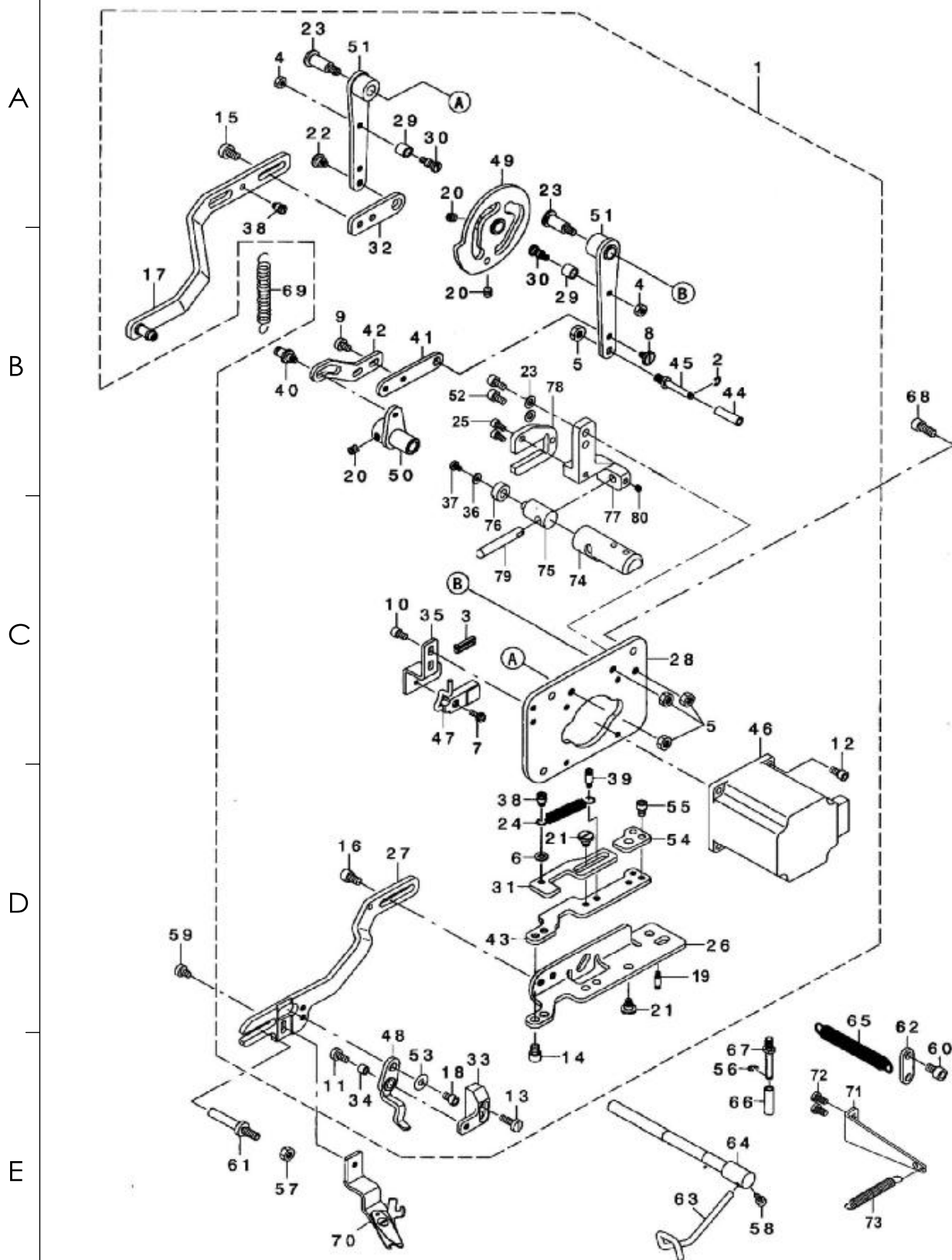
E







<b>SIRUBA</b> PARTS LIST	Series	Parts Group	Subclass Remark	Page
	<b>LBHS-1790D</b> Series	<b>08</b>		1 / 1
				Date
				2022/07/19



SiRUBA SEQUENCE LIST		Series		Parts Group	Subclass Remark	Page
		LBHS-1790D Series		08		1 / 1
						Date
						2022/07/19
	參照號	零部件序號	數量	零部件名稱	NAME OF PARTS	RM
A	1	CS79029904	1	剪麵線組件	ASSY UTT MODULE	
	2	CS00300000	1	擋圈 E3	RETAINING RING, E3	
	3	CS09500B01	2	固定帶	CABLE BAND	
	4	CS06040000	4	螺母 M4	NUT M4	
	5	CS06050001	1	螺母 M5	NUT M5	
	6	CS00430801	1	墊圈 4.3X9X0.8	WAOHER PLAIN 4. 3X9X0. 8	
	7	CS04031081	1	螺釘 M3X10	SCREW, PAN M3X10	
	8	CS00600266	1	螺釘 M4X8	SCREW, PAN M4X8	
	9	CS06040600	2	螺釘 M4X6	SCREW, PAN M4X6	
	10	CS06040602	2	螺絲 M4X6	OLT, SOCKET M4X10	
B	11	CS06040860	1	螺釘 M4X8	OLT, SOCKET M4X16	
	12	CS06040802	4	螺絲 M4X8	OLT, SOCKET M4X18	
	13	CS06041200	2	螺釘 M4X12	OLT, SOCKET M4X12	
	14	CS06050652	2	螺絲 M5X6	OLT, SOCKET M5X6	
	15	CS06050800	2	螺釘 M5X8	SCREW, PAN M5X8	
	16	CS06050802	2	螺絲 M5X8	OLT, SOCKET M5X8	
	17	CS79004400	1	開剪連杆組件	ASSY UTT RELEASE ARM	
	18	CS06040602	1	螺絲 M4X6	OLT, SOCKET M4X6	
	19	CS08050412	1	緩線鉤定位螺釘	UTT SUPPENSION SCREW	
	20	CS08050502	4	螺釘 M5X5	SET SCREW, SOCKET (FT) M5X5	
C	21	CS00600326	3	剪線導向板調節螺釘	SHOULDER SCREW D6 H3. 2	
	22	CS00800406	1	剪線連接板軸位螺釘 M5	SHOULDER SCREW D8 H4	
	23	CS00801506	2	墊圈	PLAIN WASHER	
	24	CS79072507	1	導向板彈簧	SPRING	
	25	CS00800971	2	螺釘	SCREW	
	26	CS79004235	1	剪線支架	UTT ARM A	
	27	CS79004238	1	剪刀架	UTT ARM B	
	28	CS79004293	1	剪線電機安裝板	UTT BASE PLATE	
	29	CS79004254	2	滾柱	UTT CAM ROLLER	
	30	CS79004253	2	滾柱連接螺釘	UTT CAM ROLLER SHAFT	
D	31	CS79015702	1	剪刀進退導向板	UTT RATCH PLATE B	
	32	CS79004294	1	剪線連接板	UTT RELEASE ARM A	
	33	CS79004264	1	開剪驅動板安裝座	UTT RELEASE LEVER BASE	
	34	CS79004265	1	連接小滾子	UTT RELEASE LEVER SHAFT	
	35	CS79004292	1	感測器安裝板	UTT SENSOR BASE	
	36	CS79004296	1	墊圈	PLAIN WASHER	
	37	CS79004234	1	螺釘	SCREW	
	38	CS79004248	2	螺釘 4	UTT SUPPENSION SCREW 4	
	39	CS79004252	1	緩線鉤定位螺釘 9	UTT SUPPENSION SCREW 9	
	40	CS79004247	1	緩線連接銷	UTT SUPPENSION SHOULDER SCREW	
E	41	CS79004244	1	緩線鉤連接板	UTT TREAD PULLING LINK A	
	42	CS79004245	1	緩線鉤驅動板	UTT TREAD PULLING LINK B	
	43	CS79004236	1	剪刀進退固定板	UTT X CAM	
	44	CS79004297	1	滾柱	UTT Y DRIVE ROLLER	
	45	CS79004298	1	滾軸	UTT Y DRIVE SHAFT	
	46	CS79005374	1	剪麵線步進電機	UT TRIM MOTOR ASS' Y	
	47	CS79005380	1	剪線感測器	UT TRIM SENSOR ASS' Y	
	48	CS79028634	1	開剪驅動板組件	ASSY UTT RELEASE LEVER B	
	49	CS79004229	1	剪線凸輪組件	ASSY UTT CAM	
	50	CS79004240	1	緩線鉤連接曲柄元件	ASSY UTT THREAD PULLING ARM	
	51	CS79004226	1	緩線鉤導向曲柄元件	ASSY UTT CAM ARM	
	52	CS79004232	2	螺絲 M5X12	OLT, SOCKET M5X12	
	53	CS00421005	1	墊圈 4.3X12X1	PLAIN WASHER 4. 3X12X1	
	54	CS79015674	1	限位板	UTT RATCH STOPPER	
	55	CS06040602	2	螺絲 M4X6	OLT, SOCKET M4X6	
	56	CS03000000	1	擋圈 E3	RETAINING RING E3	
	57	CS60500001	1	螺母 M5	NUT M5	
	58	CS06040602	1	螺絲 M4X6	OLT, SOCKET M4X6	
	59	CS06040600	1	螺釘 M4X6	SCREW, PAN M4X6	
	60	CS06050802	1	螺絲 M5X8	OLT, SOCKET M5X8	

1

2

3

4

5

<b>SIRUBA</b> PARTS LIST	Series	Parts Group	Subclass Remark	Page
	<b>LBHS-1790D</b> Series	<b>09</b>		1 / 1
				Date
				2022/07/19

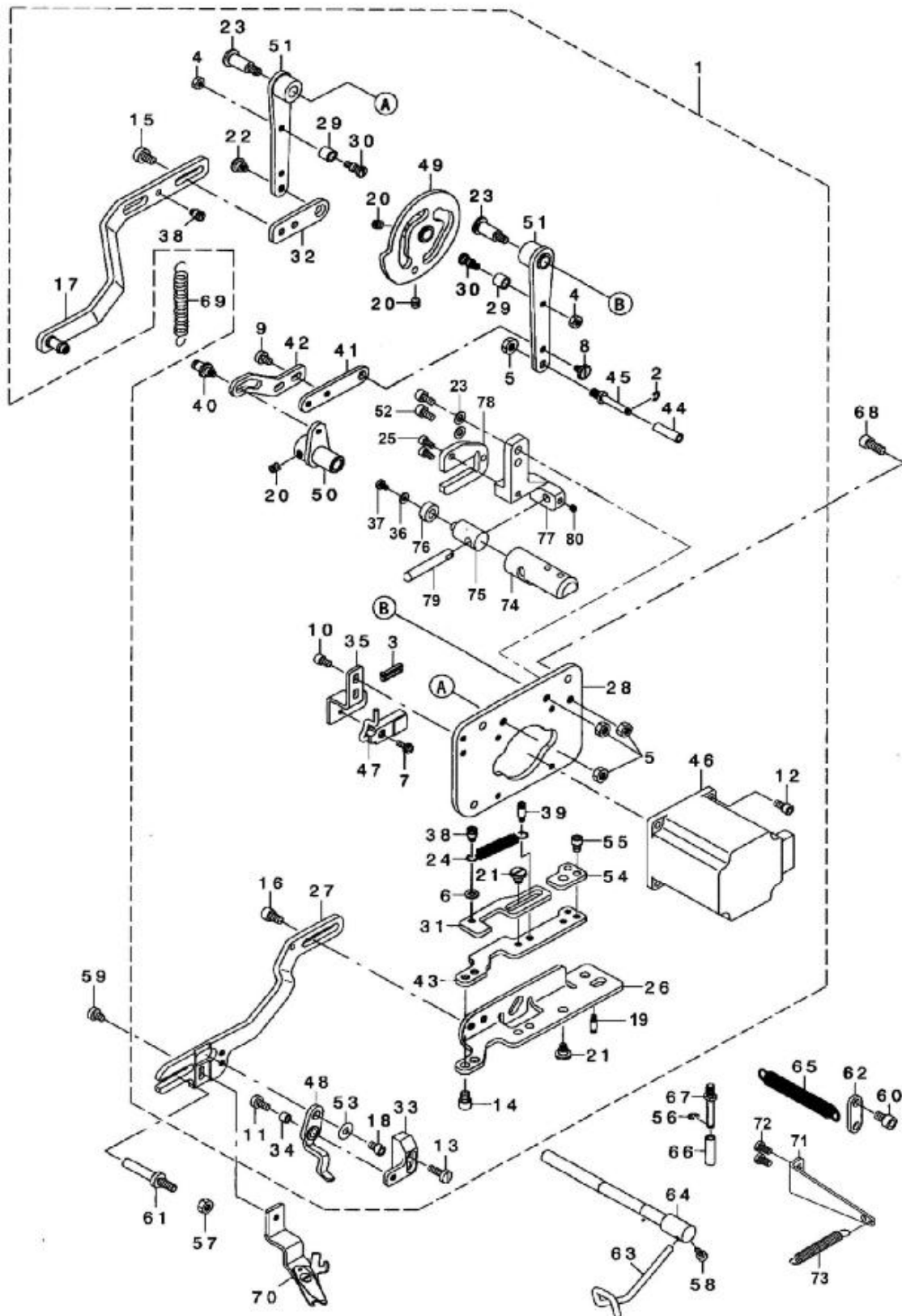
A

B

C

D

E



1

2

3

4

5

SiRUBA SEQUENCE LIST		Series		Parts Group	Subclass Remark	Page
		LBHS-1790D Series		09		1 / 1
						Date
						2022/07/19
	參照號	零部件序號	數量	零部件名稱	NAME OF PARTS	RM
A	61	CS79028636	1	壓腳導向軸	UTT GUIDE SHAFT B	
	62	CS79004249	1	連接板	UTT SUSPENSION PLATE	
	63	CS79004243	1	緩線鉤	UTT THREAD PULLING LEVER	
	64	CS79004246	1	緩線鉤軸	UTT THREAD PULLING SHAFT	
	65	CS79004250	1	剪線彈簧	UTT TRIMMER CLOSE SPRING	
	66	CS79004297	1	滾柱	UTT Y-DRIVE ROLLER	
	67	CS79004298	1	剪刀控制軸	UTT Y-DRIVE SHAFT	
	68	CS06051202	3	螺栓 M5X12	OLT, SOCKET M5X12	
	69	CS16013000	1	緩線鉤復位彈簧	BUTTON SUPPORT LEVER SPRING	
	70	CS79004255	1	上剪線刀組件	ASSY UTT TRIMMER	
B	71	CS79002101	1	拉簧支架	UTT ARM	
	72	CS7900210	2	螺釘	SCREW	
	73	CS7900210	1	拉簧	SPRING	
	74	CS79004234	1	剪線支架連接軸	UTT SUPPORT SHAFT	
	75	CS7900210	1	連接柱	UTT SUPPENSION SHOULDER SCREW	
	76	CS7900210	1	滾柱	UTT CAM ROLLER	
	77	CS7900210	1	支架	UTT ARM	
	78	CS7900210	1	導向板	UTT RATCH PLATE	
	79	CS7900210	1	軸銷	UTT SUPPORT SHAFT	
	80	CS08040402	1	螺釘 M4X4	SET SCREW, SOCKET (FT) M4X4	
C						
D						
E						

1

2

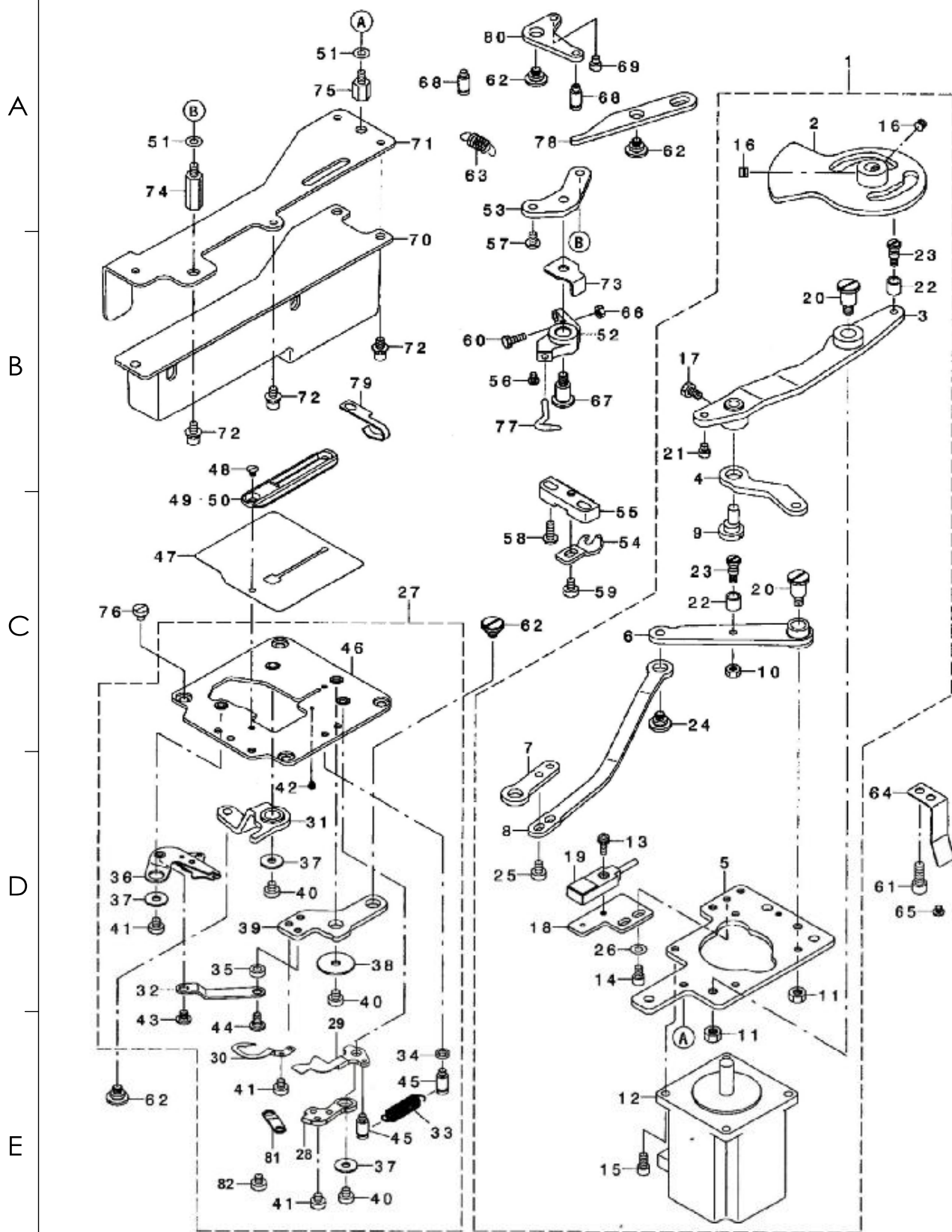
3

4

5



SiRUBA PARTS LIST	Series	Parts Group	Subclass Remark	Page
	LBHS-1790D Series	10		1 / 1
				Date
				2022/07/19



SiRUBA SEQUENCE LIST		Series		Parts Group	Subclass Remark	Page
		LBHS-1790D Series		10		1 / 1
						Date
						2022/07/19
	參照號	零部件序號	數量	零部件名稱	NAME OF PARTS	RM
A	1	CS79004330	1	剪底線組件	BTT DRIVE UNIT	
	2	CS79004332	1	剪底線凸輪組件	ASSY BTT DRIVE CAM	
	3	CS79004336	1	剪底線連杆組件	ASSY BTT DRIVE LEVER	
	4	CS79004329	1	剪底線連杆	BTT DRIVE LINK	
	5	CS79004331	1	底線電機安裝板	BTT DRIVE UNIT BASE	
	6	CS79004340	1	剪底線導向曲柄元件	ASSY BTT RELEASE LEVER	
	7	CS79004343	1	剪刀調節板	BTT RELEASE LINK F	
	8	CS79004344	1	剪底線導向曲柄連杆	BTT RELEASE LINK R	
	9	CS79037408	1	偏心軸銷	LINK ROD	
	10	CS06040001	1	螺母 M4	NUT M4	
B	11	CS06050001	2	螺母 M5	NUT M5	
	12	CS79005375	1	剪底線步進電機	LT TRIM MOTOR ASS' Y	
	13	CS04031081	1	螺釘 M3X10	SCREW, PAN M3X10	
	14	CS06040602	2	螺栓 M4X6	OLT, SOCKET M4X6	
	15	CS06040802	4	螺栓 M4X8	OLT, SOCKET M4X8	
	16	CS08050412	2	螺栓 M5X4	OLT, SOCKET M5X4	
	17	CS09040700	1	螺栓 M4X7	OLT, SOCKET M4X7	
	18	CS79004335	1	感測器安裝板	SENSOR FITTING PLATE BT	
	19	CS79005381	1	感測器	LT TRIM SENSOR ASS' Y	
	20	CS00801006	2	軸位螺釘	SHOULDER SCREW D8 H10	
C	21	CS79004299	1	止動銷	STOPPER PIN	
	22	CS79004254	2	滾柱	UTTCAM ROLLER	
	23	CS79004253	2	滾子連接銷	UTTCAM ROLLER SHAFT	
	24	CS00800296	1	軸位螺釘	SHOULDER SCREW D8 H2. 9	
	25	CS06040600	2	螺釘 M4X6	SCREW, PAN M4X6	
	26	CS00430801	2	墊圈 4.3X9X0.8	WAOHER PLAIN 4. 3X9X0. 8	
	27	CS79021998	1	針板組件	THROAT PLATE BASE UNIT	
	28	CS79022323	1	剪線器壓板	BT CLAMP B	
	29	CS79004309	1	固定板	BT CLAMP LEVER	
	30	CS79022322	1	底線導線器	BT PULLER B	
D	31	CS79004321	1	剪線控制板組件	ASSY BT RELEASE ARM	
	32	CS79004308	1	傳動連接杆	BT TRIMMER LINK	
	33	CS79029613	1	彈簧	CLAMP SPRING	
	34	CS01623180	1	墊圈	WASHER	
	35	CS03012141	1	墊圈	WASHER	
	36	CS79004311	1	下剪線刀組件	BT TRIMMER	
	37	CS00431005	3	墊圈 4.3X12X1	WAOHER PLAIN 4. 3X12X1	
	38	CS00451016	1	墊圈 4.5X20X1	WAOHER PLAIN 4. 5X20X1	
	39	CS79004306	1	剪底線傳動板	BTT LEVER	
	40	CS06040450	3	螺釘 M4X4	SCREW, PAN M4X4	
E	41	CS06040450	5	螺釘 M4X4	SCREW, PAN M4X4	
	42	CS00250101	1	軸位螺釘	SHOULDER SCREW	
	43	CS00500166	1	軸位螺釘	SHOULDER SCREW D5 H1. 6	
	44	CS00500167	1	軸位螺釘	SHOULDER SCREW D5 H1. 6	
	45	CS79004327	2	掛簧螺釘	SHSPENSION SCREW	
	46	CS79004301	1	剪線組件安裝板	ASSY THROAT PLATE BASE	
	47	CS79004324	1	防油板	OIL SHIELD	
	48	CS01030400	2	螺釘 M3X4	SCREW, PAN M4X4	
	49	CS79027553	1	針板 (S)	THROAT PLATE (1790S5)	
	50	CS79027554	1	針板 (K)	THROAT PLATE (1790K5)	
	51	CS00430800	2	平墊圈 M4	WAOHER PLAIN M4	
	52	CS79004345	1	下擋線器座	PICKER BASE	
	53	CS79004347	1	下擋線器連接板	PICDER BASE FITTING PLATE	
	54	CS79027102	1	旋梭定位鉤	STOPPER A	
	55	CS79029306	1	定位鉤安裝板	BOBBIN CASE POSITIONING PLATEE	
	56	CS04030455	1	螺釘 M3X4	SCREW, PAN M3X4	
	57	CS06040602	1	螺釘 M4X6	SCREW, PAN M4X6	
	58	CS04041050	2	螺釘 M4X10	SCREW, PAN M4X10	
	59	CS06040600	1	螺釘 M4X6	SCREW, PAN M4X6	
	60	CS06041200	1	螺栓 M4X12	OLT, SOCKET M4X12	

1

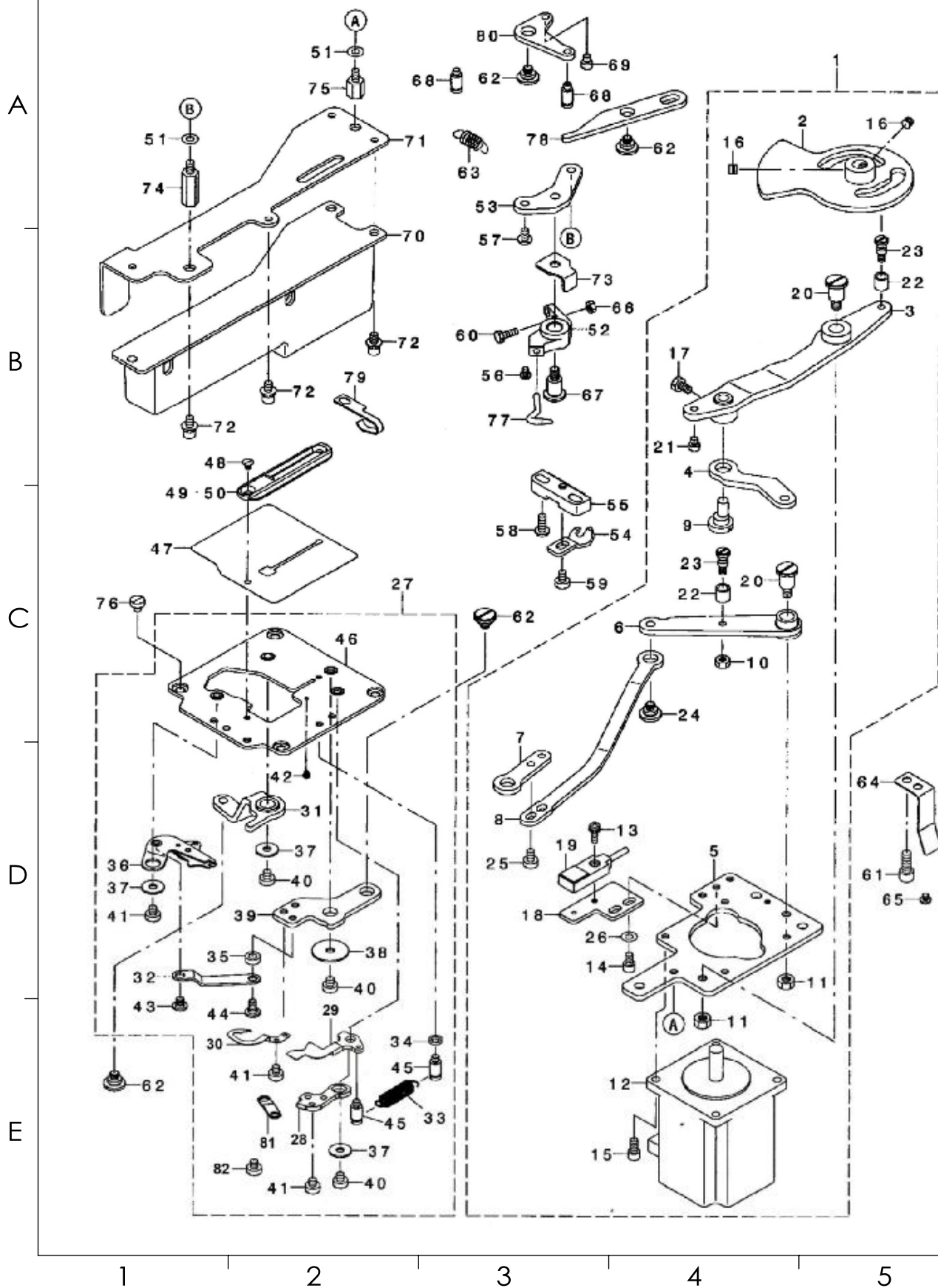
2

3

4

5

SIRUBA PARTS LIST	Series	Parts Group	Subclass Remark	Page
	LBHS-1790D Series	11		1 / 1
				Date
				2022/07/19



SiRUBA SEQUENCE LIST		Series		Parts Group	Subclass Remark	Page
		LBHS-1790D Series		11		1 / 1
						Date
						2022/07/19
	參照號	零部件序號	數量	零部件名稱	NAME OF PARTS	RM
A	61	CS06050802	3	螺栓 M5X8	OLT, SOCKET M5X8	
	62	CS00800296	4	軸位螺釘	SHOULDER SCREW D8 H2.9	
	63	CS79011327	1	彈簧	PICKER SPRING	
	64	CS79016801	1	安全開關板	SAFETY SWITCH PRESSING PLATE	
	65	CS05030355	1	螺釘 M3X3	SCREW, PAN M3X3	
	66	CS06040001	1	螺母 M4	NUT M4	
	67	CS00801006	1	軸位螺釘	SHOULDER SCREW D8 H10	
	68	CS79004327	2	掛簧螺釘	SHSPENSION SCREW	
	69	CS79004299	1	止動銷	STOPPER PIN	
	70	CS79004164	1	油盒組件	OIL TANK ASM.	
B	71	CS79004163	1	油盒安裝板	OIL TANK PLATE	
	72	CS06040892	6	螺釘 (帶墊圈) M4X8	SCREW, PAN (S/P WASHER) M4X8	
	73	CS79004328	1	止動板	PICKER BASE STOPPER	
	74	CS00033900	1	螺釘	PARTS	
	75	CS00033900	1	螺釘	STUD	
	76	CS06040450	4	螺釘 M4X4	SCREW, PAN M4X4	
	77	CS79004346	1	下擋線器	PICKER	
	78	CS79004348	1	下擋線傳動杆	PICKER ACTUATING LEVER	
	79	CS79030409	1	潤滑油管固定片	LUBRICATING OIL WICK STOPPER	
	80	CS79004349	1	下擋線傳動板	PICKER ACTUATING L LINK	
C	81	CS79002501	1	連接板	BT CLAMP LEVER	
	82	CS79002502	1	軸位螺釘	SHOULDER SCREW	
D						
E						

1

2

3

4

5

<div>SIRUBA</div> <div>PARTS LIST</div>	Series	Parts Group	Subclass Remark	Page
	LBHS-1790D Series	12		1 / 1
				Date
				2022/07/19

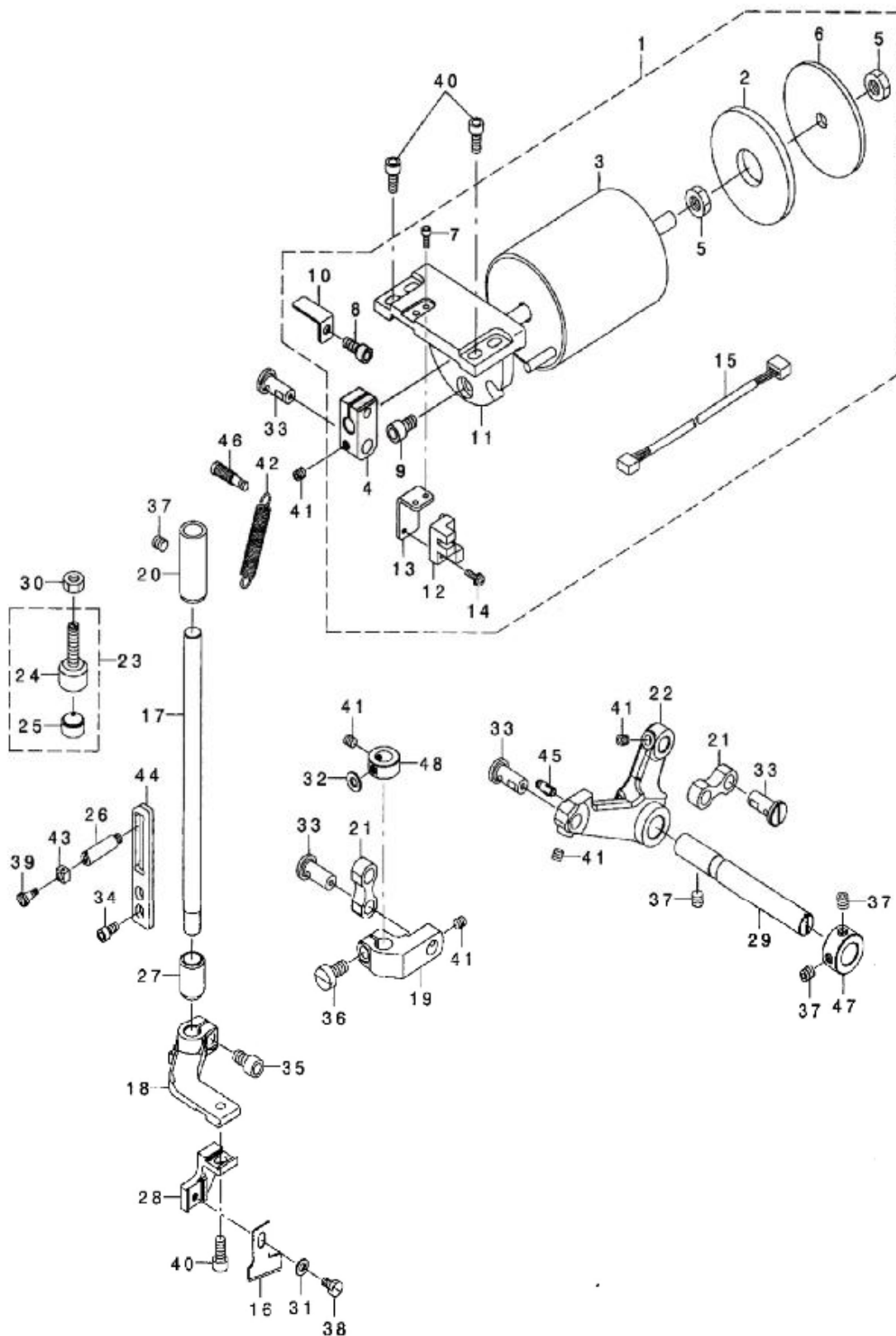
A

B

C

D

E





SiRUBA SEQUENCE LIST		Series		Parts Group	Subclass Remark	Page
		LBHS-1790D Series		12		1 / 1
						Date
						2022/07/19
	參照號	零部件序號	數量	零部件名稱	NAME OF PARTS	RM
A	1	CS79004381	1	切線驅動組件	KNIFE SOL ASM.	
	2	CS79004384	1	橡膠緩衝墊	CUSION	
	3	CS79004382	1	切刀電磁鐵	SOLENOID	
	4	CS79009788	1	刀杆座	KNIFE HOLDER	
	5	CS06080003	2	螺母 M8	NUT M8	
	6	CS79004383	1	後置板	PLATE A	
	7	CS06030802	2	螺栓 M3X8	OLT, SOCKET M3X8	
	8	CS06051202	1	螺栓 M5X12	OLT, SOCKET M5X12	
	9	CS06061002	3	螺栓 M6X10	OLT, SOCKET M6X10	
	10	CS79004387	1	感測器安裝板	SENSOR SLIT PLATE	
	11	CS79004385	1	電磁鐵安裝座	SOLENOID BASE	
	12	CS00005700	1	感測器	PHOTO SENSOR	
	13	CS79004386	1	感測器安裝板	SENSOR PLATE	
	14	CS04031091	1	螺釘 (帶墊圈) M3X10	SCREW, PAN(S/P WASHER) M3X10	
B	15	CS79005382	1	電線	CUTTER SENSOR JOINT CLRD	
	16	CS02702047	1	刀片 1/2"	KNIFE 1/2"	
	17	CS79004394	1	切刀軸	KNIFE BAR	
	18	CS79004396	1	切刀杆座	KNIFE BAR BASE	
	19	CS79004397	1	切刀杆支架	KNIFE BAR BRACKET	
	20	CS79004398	1	切刀杆上襯套	KNIFE BAR BUSH	
	21	CS79046508	2	切刀驅動連杆	KNIFE BAR CONNECTING LINK	
	22	CS79004390	1	驅動曲柄	KNIFE BAR DRIVING LEVER	
	23	CS79004219	1	限位元螺釘組件	KNIFE BAR DRIVING STOPPER ASM.	
	24	CS79004391	1	切刀限位螺釘	KNIFE BAR DRIVING STOP SCREW	
	25	CS79050807	1	緩衝墊	KNIFE DRIVING LEVER STOPPER	
	26	CS79004210	1	支撐軸	KNIFE BAR SUPPORT SHAFT	
	27	CS79040276	1	切刀杆下襯套	KNIFE BAR LOWER BUSHING	
	28	CS79004393	1	切刀安裝座	KNIFE FITTING BASE	
C	29	CS79004395	1	驅動軸	KNIFE LEVER SHAFT	
	30	CS06060002	1	螺母 M6	NUT M6	
	31	CS00430801	1	墊圈 4.3X9X0.8	WAOHER PLAIN 4.3X9X0.8	
	32	CS00501016	1	墊圈 5X10.5X1	WAOHER PLAIN 5XX10.5X1	
	33	CS79004392	4	曲柄軸	BELL CRANK SHAFT	
	34	CS06040802	2	螺栓 M4X8	OLT, SOCKET M4X8	
	35	CS06061202	1	螺栓 M6X12	OLT, SOCKET M6X12	
	36	CS06061200	1	螺釘 M6X12	SCREW, PAN M6X12	
	37	CS08060612	4	螺釘 M6X6	SET SCREW, SOCKET (FT) M6X6	
	38	CS09040700	1	螺釘 M4X6	SCREW, PAN M4X6	
	39	CS00400506	1	切刀導向軸位元螺釘	SHOULDER SCREW D4 H5	
	40	CS06051202	5	螺栓 M5X12	OLT, SOCKET M5X12	
	41	CS08050502	5	螺釘 M5X5	SET SCREW, SOCKET (FT) M5X5	
	42	CS79004389	1	彈簧	SPRING	
D	43	CS79006315	1	滑塊	SQUARE BLOCK	
	44	CS79004211	1	支撐導向板	SUPPORT GUIDE	
	45	CS79038802	1	掛簧銷	SUSPENSION SCREW	
	46	CS79004179	1	掛簧螺釘	SUSPENSION SCREW	
	47	CS01201171	1	驅動軸擋圈	SHOULDER SCREW D12 H11	
	48	CS79006313	1	切刀杆支架擋圈	COLLAR	
E						

<b>SIRUBA</b>  PARTS LIST	Series	Parts Group	Subclass Remark	Page
	<b>LBHS-1790D</b> <b>Series</b>	<b>13</b>		1 / 1
				Date
				2022/07/19

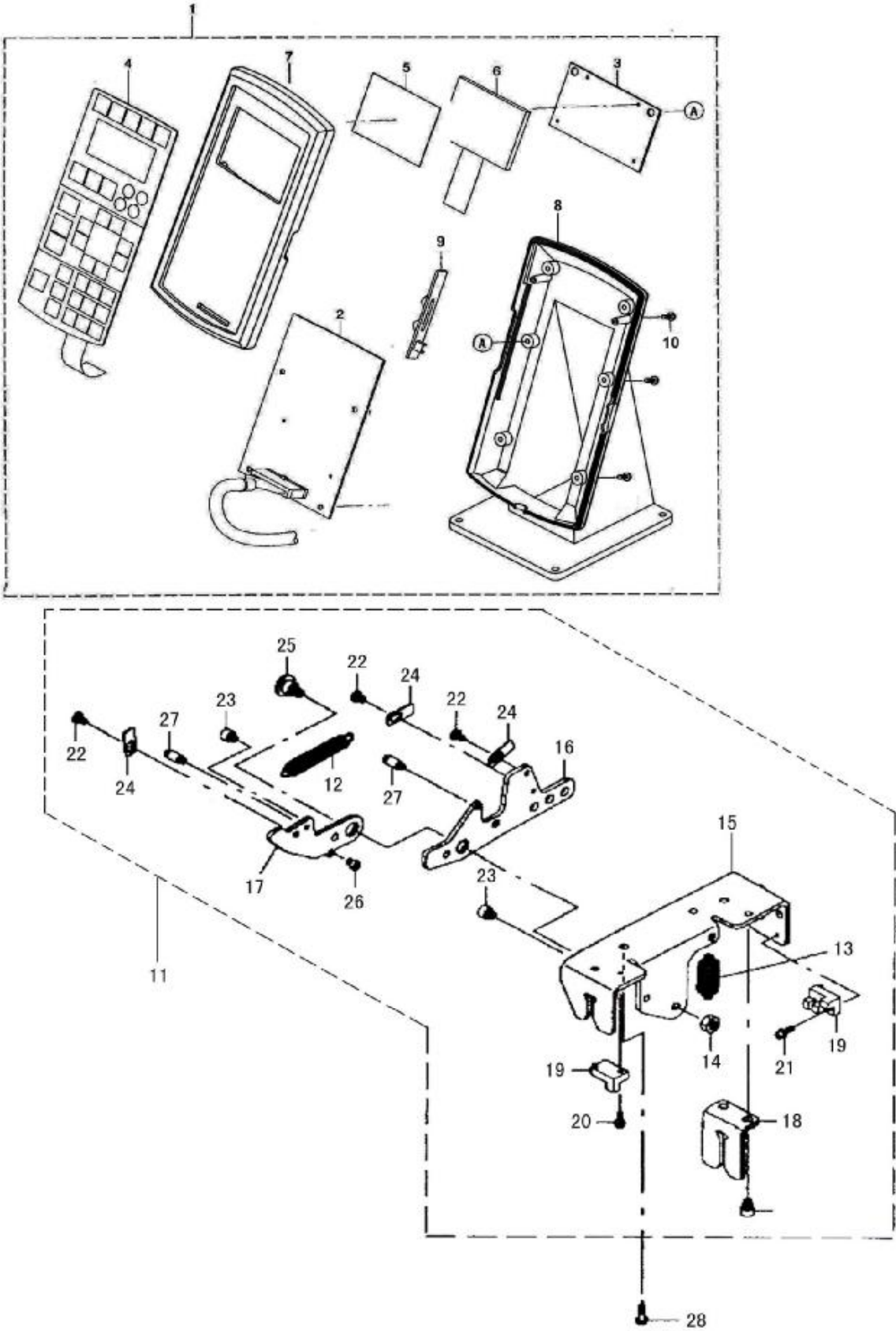
A

B

C

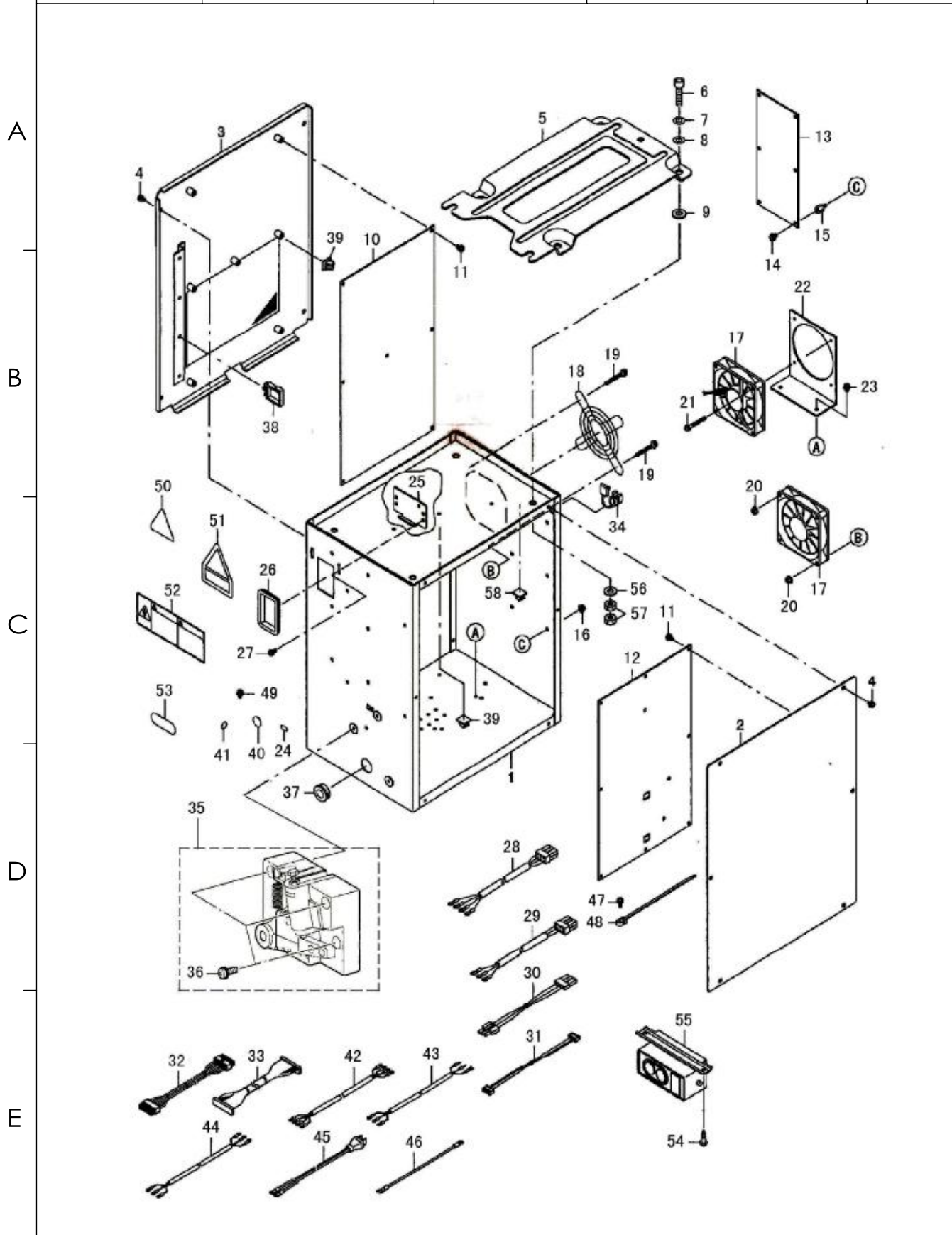
D

E





<b>SIRUBA</b>  PARTS LIST	Series	Parts Group	Subclass Remark	Page
	<b>LBHS-1790D</b> Series	<b>14</b>		1 / 1
				Date
				2022/07/19



SiRUBA SEQUENCE LIST		Series		Parts Group	Subclass Remark	Page
		LBHS-1790D Series		14		1 / 1
						Date
						2022/07/19
	參照號	零部件序號	數量	零部件名稱	NAME OF PARTS	RM
A	1	CS79003451	1	電控箱	CONTROL BOX	
	2	CS79003452	1	前蓋板	CONTROL BOX FRONT COVER	
	3	CS79003453	1	後蓋板	CONTROL BOX REAR XOVER	
	4	CS04040891	10	螺釘 (帶墊圈)M4X8	SCREW, PAN(S/P WASHER)M4X8	
	5	CS03801476	1	電控箱安裝板	CONTROL BOX FITTING PLATE	
	6	CS06083002	4	螺栓 M8X30	OLT, SOCKET M8X30	
	7	CS00820002	4	彈墊圈 M8	SPRING WASHER, M8	
	8	CS00841601	4	平墊圈 8.4X17.4X1.6	WAOHER PLAIN 8.4X17.4X1.6	
	9	CS04206461	4	墊圈	WAOHER	
	10	CS79003412	1	電源板	MAIN PCB A ASS' Y	
B	11	CS04040881	17	螺釘 (帶墊圈)M4X8	SCREW, PAN(S/P WASHER)M4X8	
	12	CS79000029	1	電路板	SDC PCB A ASS' Y	
	13	CS79000056	1	主機板	FLT-T PCB A ASS' Y	
	14	CS04040881	6	螺釘 (帶墊圈)M4X8	SCREW, PAN(S/P WASHER)M4X8	
	15	CS00033900	6	螺柱	STUD	
	16	CS03040520	6	法蘭螺母 M4	NUT M4	
	17	CS79005401	2	風扇組件	FAN MOTOR ASS' Y	
	18	CS00004800	1	風扇濾網	FINGER GUIDE	
	19	CS04043591	4	螺釘 (帶墊圈)M4X35	SCREW, PAN(S/P WASHER)M4X35	
	20	CS03040520	4	法蘭螺母 M4	NUT M4	
C	21	CS04033091	4	螺釘 M3X30	SCREW, PAN M3X30	
	22	CS79005404	1	風扇安裝板	FAN MOTOR BRACKET	
	23	CS04040891	2	螺釘 M4X8	SCREW, PAN M4X8	
	24	CS02001000	1	PE 標籤	PE MARK LABEL	
	25	CS00040700	1	電線護圈	BUSH	
	26	CS79045009	1	電線擋板	BORD FITTING PLATE	
	27	CS04041091	2	螺釘 M4X10	SCREW, PAN M4X10	
	28	CS79005391	1	電纜線	POWER CORD 3P ASS' Y	
	29	CS79005388	1	220V 電源線	POWER CORD 1P 220V ASS' Y	
	30	CS79005393	1	電纜線組件	FLT-SDC CORD P ASS' Y	
D	31	CS79005394	1	電纜線組件	FLT-SDC CORD S ASS' Y	
	32	CS79005395	1	電纜線組件	SDC-MAIN CORD P ASS' Y	
	33	CS79005396	1	電纜線組件	SDC-MAIN CORD S ASS' Y	
	34	CS00041000	1	電線襯套	BUSHING	
	35	CS79003484	1	踏板組件	PEDAL SENSOR ASM.	
	36	CS04041681	3	螺釘 M4X16	SCREW, PAN M4X16	
	37	CS00188000	1	電線護套	BUSH	
	38	CS00051100	2	電線卡	WIRE SADDLE	
	39	CS09607603	2	電線夾	STICKER (SMALL)	
	40	CS79003458	1	標籤	NASJ SEAK	
E	41	CS09567319	1	標籤	EARTH MARK	
	42	CS09017580	1	電纜線	POWER CABLE ASM.	
	43	CS79005390	1	電纜線	POWER CABLE JE ASS' Y	
	44	CS09024580	1	電纜線 100V	POWER CABLE ASM. , 100V	
	45	CS09035580	1	電纜線	POWER WOURCE COUD ASM.	
	46	CS09019580	1	接地線	EARTH CABLE ASM.	
	47	CS04041081	1	螺釘 M4X10	SCREW, PAN M4X10	
	48	CS00015100	1	紮帶	CABLE PARTS	
	49	CS04040891	1	螺釘 (帶墊圈)M4X8	SCREW, PAN(S/P WASHER)M4X8	
	50	CS03001000	1	電壓警告標籤	VOLTAGE WARNING LABEL (25)	
	51	CS03004006	1	電壓提示標籤	VOLTAGE CAUTION LABEL	
	52	CS03001004	1	操作注意標籤	DENGER LABEL 3 (LARGE)	
	53	CS03200000	1	220V 標籤	VOLTAGE INDICATION SEAL	
	54	CS03512001	2	木螺釘 M5X20	WOOD SCREW M5X20	
	55	CS00042500	1	開關元件	SWITCH	
	56	CS00841601	4	平墊圈 8.4X17.4X1.6	WAOHER PLAIN 8.4X17.4X1.6	
	57	CS06080001	8	螺母 M8X1.25	NUT M8X1.25	
	58	CS09607603	1	電線夾	STICKER (SMALL)	

1

2

3

4

5



<div>SIRUBA</div> <div>PARTS LIST</div>	Series	Parts Group	Subclass Remark	Page
	LBHS-1790D Series	15		1 / 1
				Date
				2022/07/19

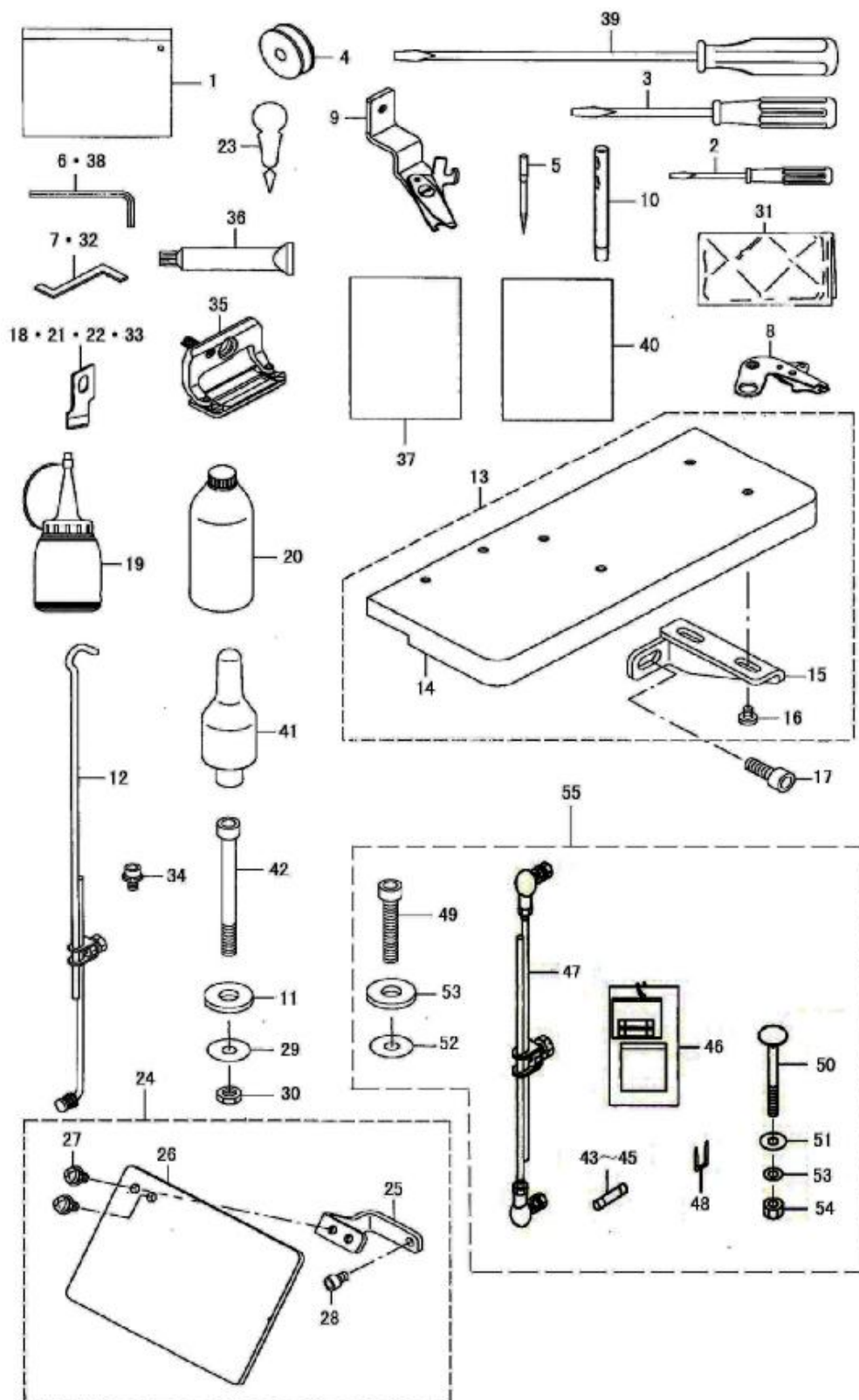
A

B

C

D

E



SiRUBA SEQUENCE LIST		Series		Parts Group	Subclass Remark	Page
		LBHS-1790D Series		15		1 / 1
						Date
						2022/07/19
	參照號	零部件序號	數量	零部件名稱	NAME OF PARTS	RM
A	1	CS79032800	1	機頭罩	ACCESSORIE BAG	
	2	CS79033204	1	一字螺絲刀 (小)	SCREW DRIVER, SMALL	
	3	CS79033105	1	一字螺絲刀 (中)	SCREW DRIVER, MIDDLE	
	4	CS79009148	1	梭芯	BOBBIN	
	5	CS5J0B1102	1	機針 #12	NEEDLE DPX5 #12	
	6	CS01066000	1	內六角扳手	HEXAGONAL WRENCH, 2	
	7	CS79082107	1	定時調節鉤	HOOK TIMING GAUGE, K	
	8	CS79004311	1	夾線裝置	BT TRIMMER	
	9	CS79004255	1	剪線裝置	ASSY UTT TRIMMER	
	10	CS79002504	1	過線軸	THREAD GUIDE BAR	
B	11	CS06056555	4	墊圈	RUBBER CUSHION (B)	
	12	CS79004851	1	拉杆組件	CONNECTING ROD COMPL.	
	13	CS79008890	1	輔助桌板組件	AUXILIARY TABLE ASM.	
	14	CS79008889	1	輔助桌板	AUXILIARY TABLE	
	15	CS79085803	2	托架	INSTALLING PLATE	
	16	CS07110570	4	螺釘 SM11/64" -40	SCREW, PAN SM11/64" -40	
	17	CS06061002	2	螺栓 M6X10	OLT, SOCKET M4X10	
	18	CS02702047	1	切刀 1"	KNIFE 1"	
	19	CS01067000	1	油壺組件	OILER ASSY	
	20	CSRX1600C0	1	油罐組件	OIL TANK ASSY	
C	21	CS2702047M	1	切刀 5/8"	KNIFE 5/8"	
	22	CS2702047L	1	切刀 1/2"	KNIFE 1/2"	
	23	CS09107761	1	穿線鉤	THREAD PASSING INSTRUMENT	
	24	CS79052047	1	護眼板組件	ASSY SAFETY PLATE B	
	25	CS79049424	1	護眼板托架	SAFETY PLATE BESE	
	26	CS03120372	1	護眼板	SAFETY PLATE	
	27	CS04040891	2	螺釘 (帶墊圈) M4X8	SCREW, PAN (S/P WASHER) M4X8	
	28	CS06040602	1	螺栓 M4X6	OLT, SOCKET M4X6	
	29	CS00612056	4	墊圈 6.1X18.5X2	WAOHER PLAIN 6.1X18.5X2	
	30	CS06060001	8	螺母 M6	NUT M6	
D	31	CS79034005	1	附屬品塑膠袋	ACCESSORY BAG	
	32	CS79043402	1	定時調節鉤	TIMING GAUGE, DMESTIC USE.	
	33	CS2702047K	1	切刀 3/8"	KNIFE 3/8"	
	34	CS06040892	1	螺栓	BOLT	
	35	CS01552782	1	壓腳組件	PRESSER FOOT 2 ASM.	
	36	CS79006323	1	潤滑脂組件	GREASE UNIT	
	37	CS06001002	1	零件手冊	PARTS BOOK	
	38	CS02906000	1	內六角扳手	HEXAGONAL WRENCH, 3	
	39	CS79033006	1	一字螺絲刀 (大)	SCREW DRIVER, LARGE	
	40	CS79080403	1	說明書	INSTRUCTION MANUAL	
E	41	CS79001208	1	機頭撐杆	HEAD REST	
	42	CS06067052	4	螺栓 M6X70	HEXAGON BOLT	
	43	CS00013031	1	保險絲 250V-15A	G FUSE S 15A	
	44	CS00030002	1	保險絲 250V-2A	G FUSE S 2A	
	45	CS00013050	1	保險絲 250V-5A	G FUSE S 5A	
	46	CS03004511	1	電壓指示牌	VOLTAGE INDICATION SARD, A	
	47	CS79058458	1	腳踏拉杆	CONNECTING ROD ASM. B	
	48	CS11532000	3	線卡	STAPLE	
	49	CSHJ100003	1	螺栓 M8X40	HEXAGON BOLT	
	50	CS06084002	2	螺栓 M8X60	OLT, SOCKET M8X40	
	51	CS00852086	3	平墊圈 M8	ASHER, PLAIN M8	
	52	CS00852086	1	墊圈	ASHER	
	53	CS00820002	3	彈簧墊圈 M8	WASHER, SPRING M8	
	54	CS06080002	2	螺母 M8	NUT M8	
	55	CS79005385	1	連接元件	ACCESSORIE PARTS A ASM.	

1

2

3

4

5

<div> <div>SIRUBA</div> <div>PARTS LIST</div> </div>	Series	Parts Group	Subclass Remark	Page
	LBHS-1790D Series	16		1 / 1
				Date
				2022/07/19

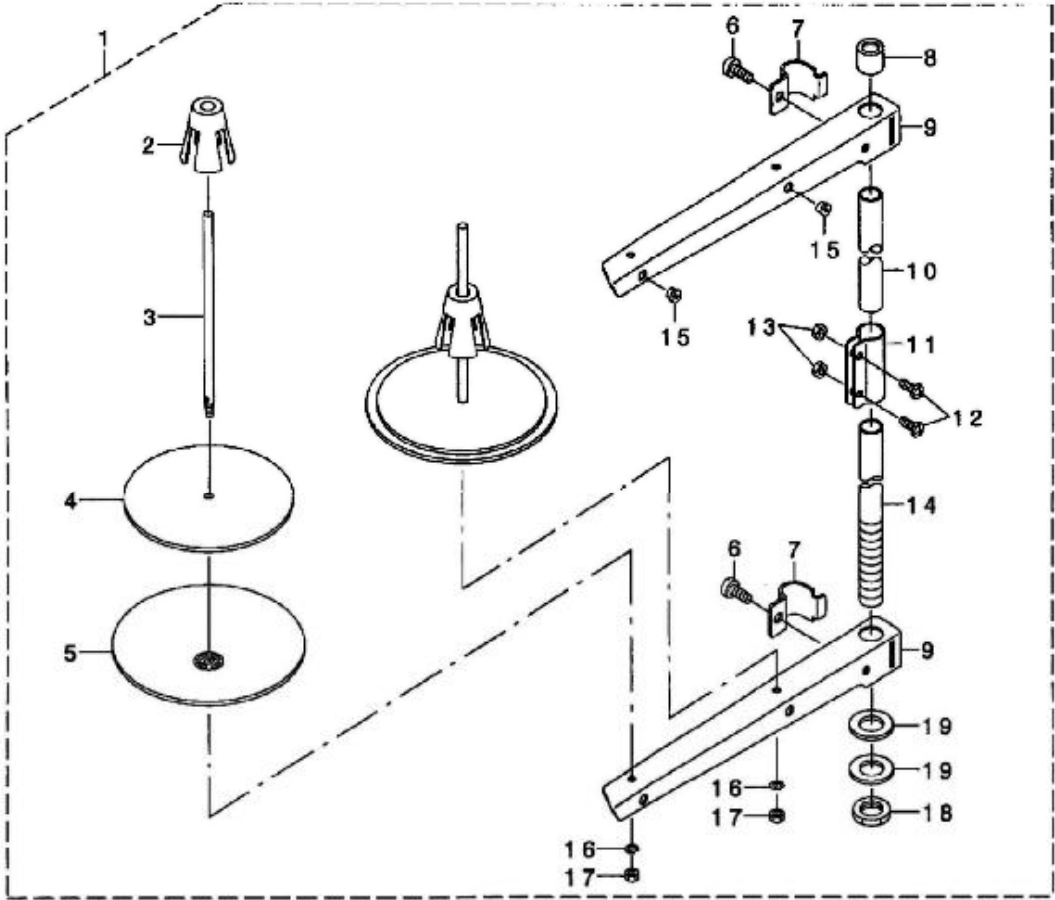
A

B

C

D

E





<b>SIRUBA</b>  PARTS LIST	Series	Parts Group	Subclass Remark	Page
	<b>LBHS-1790D</b> Series	<b>17</b>		1 / 1
				Date
				2022/07/19

A

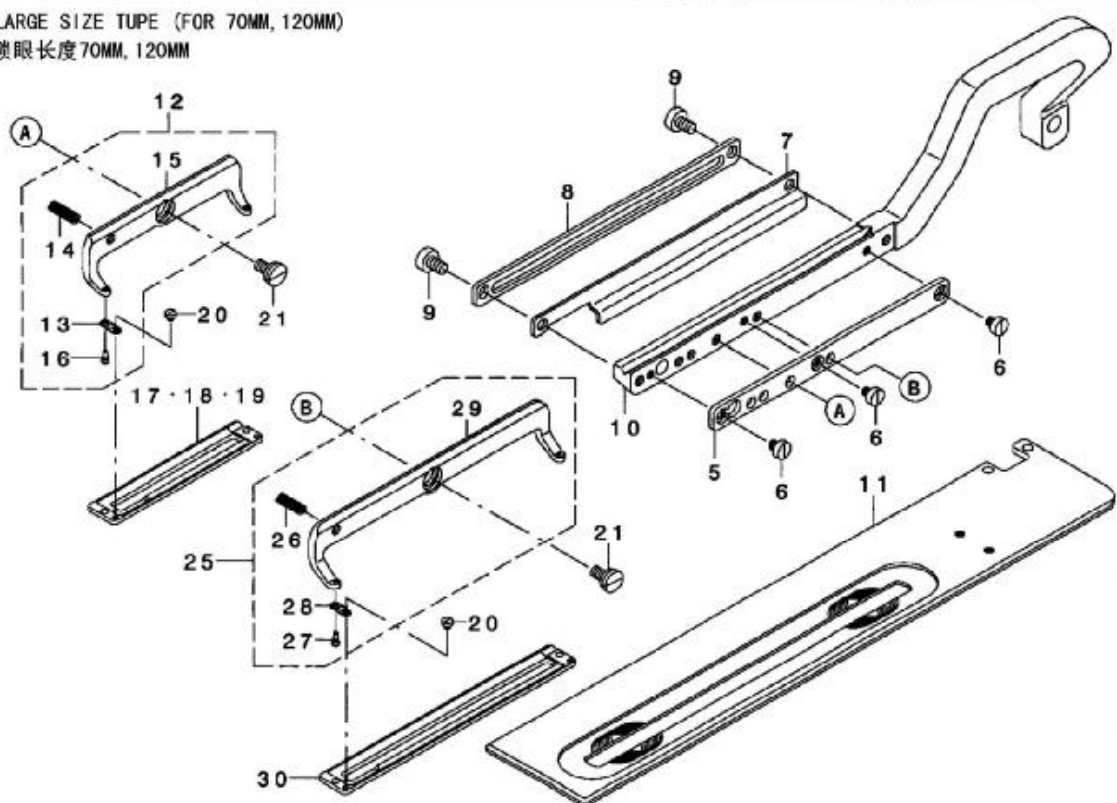
B

C

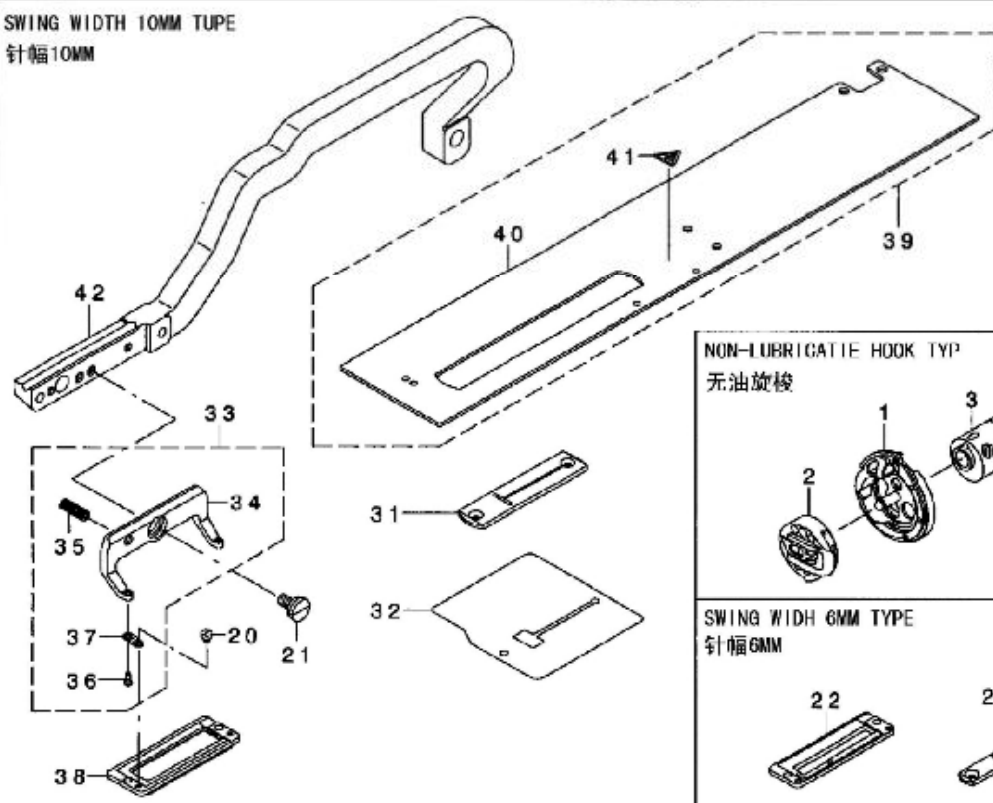
D

E

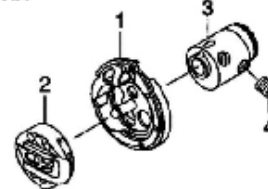
LARGE SIZE TUPE (FOR 70MM, 120MM)  
锁眼长度 70MM, 120MM



SWING WIDTH 10MM TUPE  
针幅10MM



NON-LUBRICATE HOOK TYPE  
无油旋梭



SWING WIDTH 6MM TYPE  
针幅6MM





SiRUBA SEQUENCE LIST		Series		Parts Group	Subclass Remark	Page
		LBHS-1790D Series		17		1 / 1
						Date
						2022/07/19
	參照號	零部件序號	數量	零部件名稱	NAME OF PARTS	RM
A	1	CS79006345	1	旋梭	RP HOOK ASM.	
	2	CS79006349	1	梭殼	RP BOBBIN CASE	
	3	CS79029603	1	旋梭連接套元件	HOOK SLEEVE	
	4	CS08660612	4	螺釘 SM1/4" -40	SCREW, PAN SM SM1/4" -40	
	5	CS79006340	1	墊塊	WORK CLAMP HOLDER SPACE	
	6	CS06040450	3	螺釘 M4X4	SCREW, PAN M4X4	
	7	CS79028682	1	剪線板 120B	UTT CLOSE CAM 120B	
	8	CS79006342	1	壓腳前後送料導向板 120	LIFTING PLATE 120	
	9	CS06050800	2	螺釘 M5X8	SCREW, PAN M5X8	
	10	CS79006335	1	壓腳支架 120MM	WORK CLAMP ARM 120MM	
B	11	CS79006339	1	送料板 120MM	WORK CLAMP CARRIER 120MM	
	12	CS79023252	1	壓腳組件 70MM	PRESSER FOOT 70 ASM.	
	13	CS01509761	2	壓腳彈簧板	PRESSER FITTING PLATE SPRING	
	14	CS01512761	1	壓腳板座彈簧	PRESSER FKKT HOLDBR SPRING	
	15	CS79023203	1	壓腳板座 70MM	PRESSER FOOT 70MM	
	16	CS01510771	2	壓腳彈簧定位銷	PRESSER FOOT PI B	
	17	CS79023708	1	壓腳板 70MM	PRESSER 70	
	18	CS79024102	1	壓腳板 70MM	PRESSER 70	
	19	CS79023401	1	壓腳板 70MM	PRESSER 70	
	20	CS06060210	6	螺釘 SM3/32" -56	SCREW, PAN SM SM3/32" -56	
C	21	CS00790203	3	軸位螺釘	SHOULDER SCREW D7.94 H2	
	22	CS79024409	1	壓腳板 6M	PRESSER 6M	
	23	CS79004351	1	針板 (S6)	THROAT PLATE (S6)	
	24	CS79004353	1	針板 (K6)	THROAT PLATE (K6)	
	25	CS79008646	1	壓腳組件 120MM	ASSY WORK CLAMP CHECK HOLDER 120MM	
	26	CS79008638	1	壓腳板座彈簧	WORK CLAMP CHECK HOLDBR SPRING	
	27	CS01510771	2	壓腳彈簧定位銷	WORK CLAMP CHECK SPRING SET PI	
	28	CS01509761	2	壓腳彈簧板	WORK CLAMP CHECK SPRING	
	29	CS79008647	1	壓腳板座 120MM	WORK CLAMP CHECK HOLDER 120MM	
	30	CS79008658	1	壓腳板 120MM	WORK CLAMP 120MM	
D	31	CS79015733	1	針板 (S10)	THROAT PLATE (S10)	
	32	CS79015802	1	防油板	OIL SHIELD 10	
	33	CS79020010	1	壓腳組件 (3-10)	WORK CLAMP HOLDBR (3-10) ASSY	
	34	CS79020011	1	壓腳板座 (3-10)	WORK CLAMP HOLDBR (3-10)	
	35	CS79008638	1	壓腳板座彈簧	WORK CLAMP CHECK HOLDBR SPRING	
	36	CS01510771	2	壓腳彈簧定位銷	WORK CLAMP CHECK SPRING SET PI	
	37	CS01509761	2	壓腳彈簧板	WORK CLAMP CHECK SPRING	
	38	CS79017810	1	壓腳板 (3S-10)	WORK CLAMP (S3-10)	
	39	CS79020014	1	送料板組件	WORK CLAMP CARRIER (10X41) CL	
	40	CS79020012	1	送料板	WORK CLAMP CARRIER (10X41)	
E	41	CS03002000	1	警告標籤	ATTENTION SEAL	
	42	CS79020013	1	壓腳支架 (10X41)	WORK CLAMP ARM (10X41)	

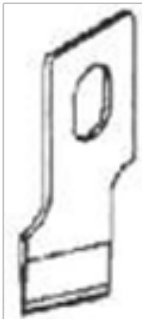
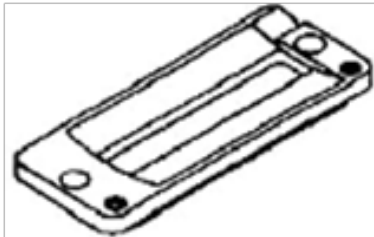

1

2

3

4

5

SIRUBA PARTS LIST			Series		Parts Group		Subclass Remark		Page				
			LBHS-1790D Series		18				1 / 1				
									Date				
									2022/07/08				
		Cloth Cutting knife 切刀片		Presser Foot (Length of cloth Cutting Knife) 壓腳板				Presser Foot (Presser Size) 壓腳組件					
A													
		標準 Standard		標準 Standard		專用 For Hoisiery		標準 (針幅) Standard (For swing width 6mm)		標準 Standard			
		inch	mm	Part. no		Part. no		Part. no		Part. no			
C		1/4	6.4	CS2702047F		CS01552781 (6.4 ~ 19.1mm)		CS01508771 (6.4 ~ 19.1mm)		CS79024409 (6.4 ~ 31.8mm)		CS01511771 (Type 1)	
		3/8	9.5	CS2702047K									
		7/16	11.1	CS2702047I									
		1/2	12.7	CS2702047L									
		9/16	14.3	CS2702047V									
		5/8	15.9	CS2702047M									
		11/16	17.5	CS2702047A									
		3/4	19.1	CS2702047N									
D		7/8	22.2	CS2702047P		CS01552782 (6.4 ~ 25.4mm)		CS01508772 (6.4 ~ 25.4mm)		CS01511772 (Type 2)			
		1	25.4	CS2702047Q		CS01552783 (6.4 ~ 31.8mm)		CS01508773 (6.4 ~ 31.8mm)					
		1-1/4	31.8	CS2702047S									
E													
		1	2	3	4	5							



高林股份有限公司  
KAULIN MFG. CO., LTD.

由於對產品的改良及更新，本產品零件圖及外觀的修改恕不事先通知！  
The specification and/or appearances of the equipment described in this parts list are  
subject to change because of modification which will without previous notice.  
CQL-22X03.JUL.2024