

# SIRUBA

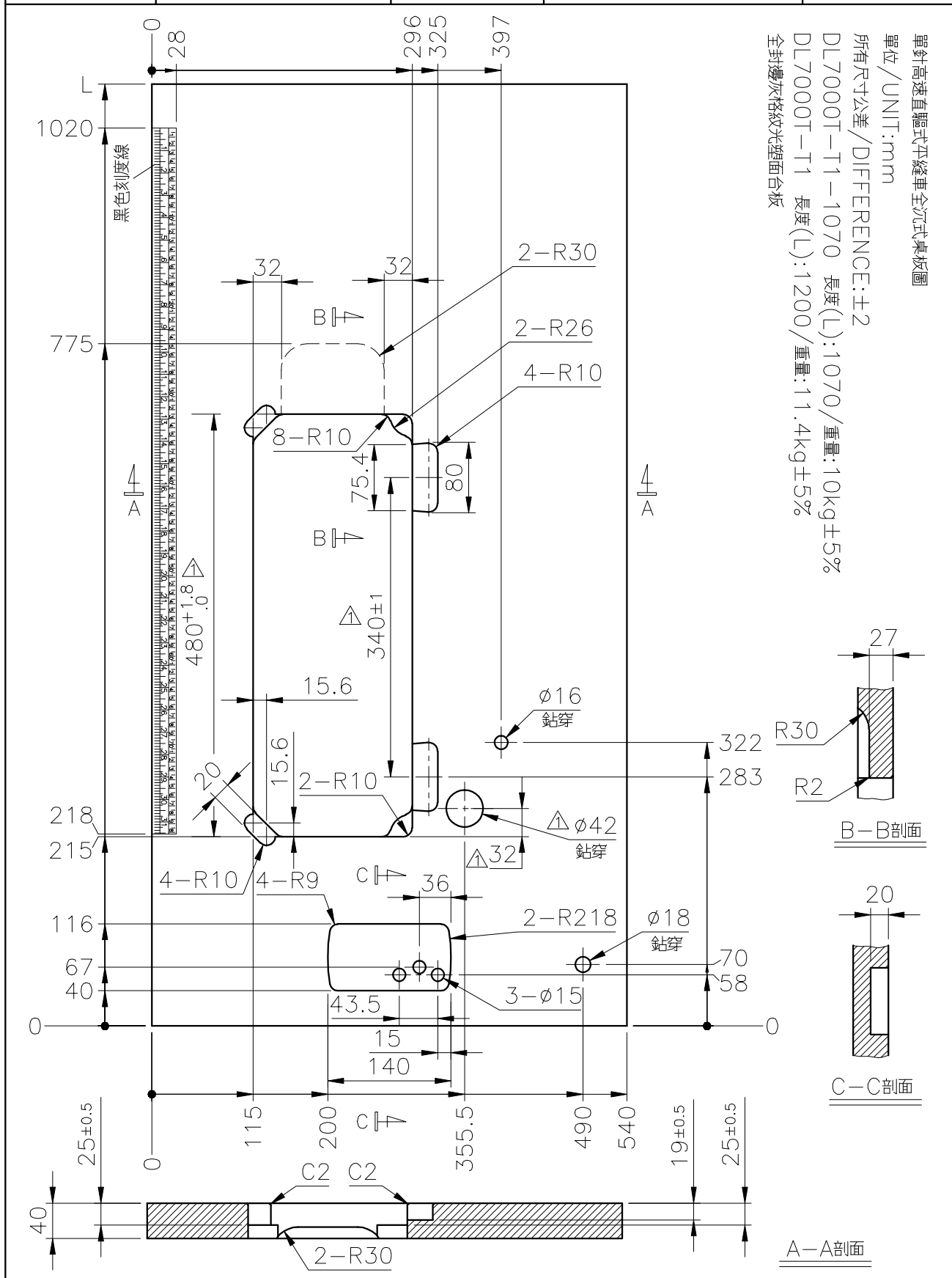
零件圖

PARTS LIST

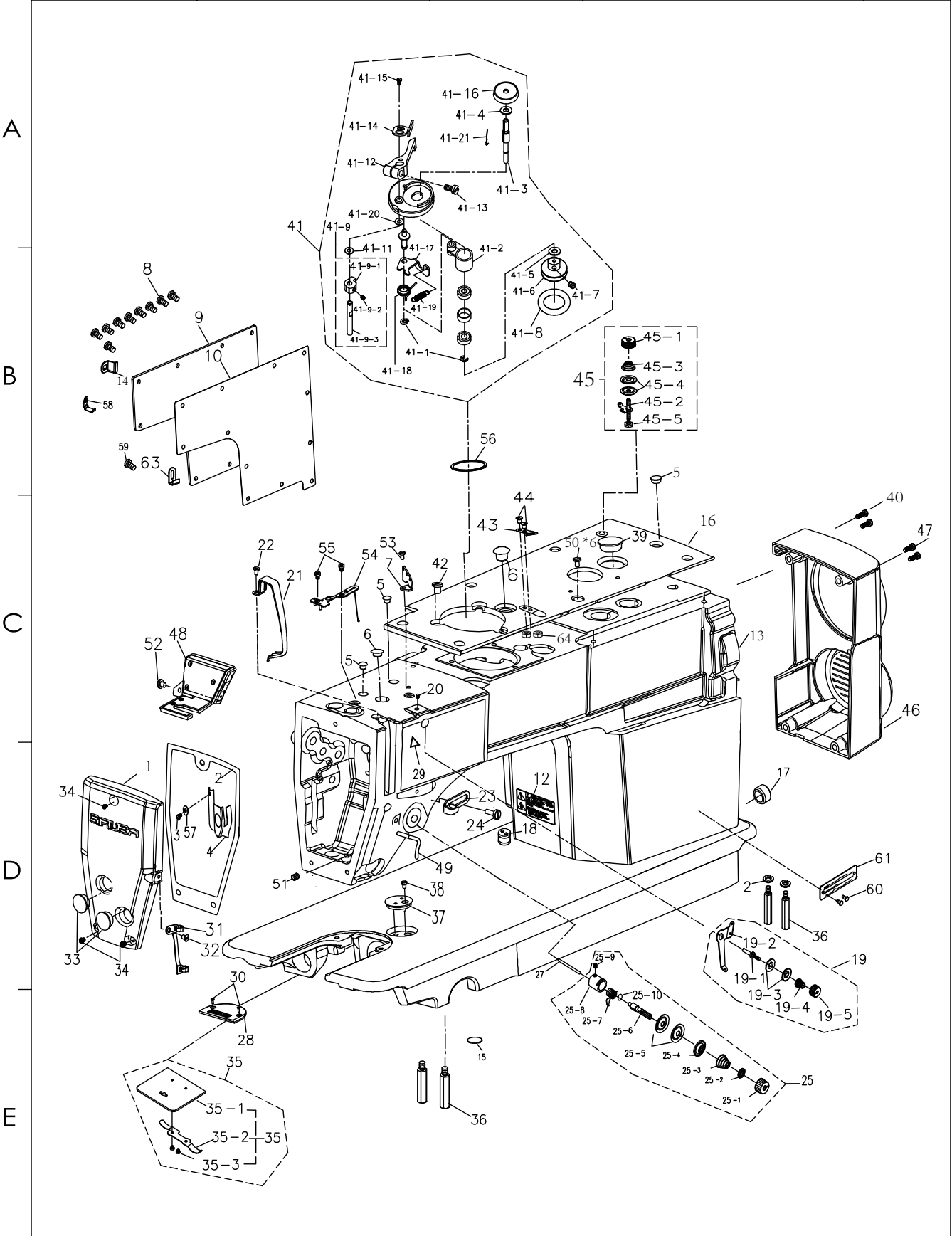
DL7200S



SIRUBA TABLE CUT - OUT	Series	Item Code	Subclass / Remark	Mounting
	DL720/DL6800/DL6900 DL7000/DL7200/DL7300 DL7400/DL7500/DL3880 DL380 ▲	DL7000T-T1		Fully-submerged
				Date
				2021/04/26



<b>SIRUBA</b>  PARTS LIST	Series	Parts Group	Subclass Remark	Page
	DL7200S	01		1 / 1
				Date
				2024/9/10



SIRUBA  SEQUENCE LIST		Series	Parts Group	Subclass Remark	Page
		DL7200S	01		1 / 1
					Date
					2024/9/10
序号 Ref.No.	新编号 new part No.	名 称 Part name	Name of parts	数量 Qty	备注 Note
1	7200S01001	面板	Face plate	1	
2	7200S01002	面板垫	Face plate agsket	1	
3	S073184404	防油板螺钉	Screw 1/8×44 L=4	1	
4	280001004	面部防油板	Arm oil shield	1	
5	991001005	橡胶塞	Rubber plug	3	
6	991001006	针杆曲柄螺孔塞	Rubber plug	2	
7	991001007	三眼过线板	Thread guide rod	1	
8	S094762809	后窗板螺钉	Screw 3/16×28 L=9	9	
9	7200S01009	后窗板	Side plate	1	
10	7200S01010	后窗板垫	Gasker	1	
12	991001012	安全指示牌	Safety lable	1	
13	7200S01013	机壳组件	Machine cover	1	
14	730001014E	线夹	Clamp	1	
15	280001074	检验标示	Inspection sign	1	
16	7200S01067	上盖	Top cover	4	
17	991001017	下轴盲孔塞	Rubber plug	1	
18	991001018	导线过线套(2孔)	Magnet cord rubber	1	
19	720001012T	小夹线器组件	Thread tension asm	1	
19-1	991001019-1	小夹线螺钉	Small clip line screw	1	
19-2	991001019-2	小夹线过线板	Thread tension guide	1	
19-3	991001019-3	小夹线板	Thread tension disk	2	
19-4	991001019-4	小夹线簧	Thread tension spring	1	
19-5	720001012T-5	小夹线螺母	Thread tension nut	1	
20	S114374006	小夹线组件支架螺钉	Screw	1	
21	720001038C	挑线防护罩	Thread take-up lever cover	1	
22	S044762810	挑线防护罩螺钉	Screw 3/16×28 L=6	1	
23	991001023	右线钩	Arm thread guide right	1	
24	S074374006	右线钩螺钉	Screw 11/64×40 L=6	1	
25	720001012C	夹线器组件	Thread tension asm	1	
25	720001012CH	夹线器组件（厚料）	Thread tension asm	1	
25-1	720001012C-1	夹线螺母	Tension nut	1	
25-2	991001025-2	夹线止动板	Rotating stopper	1	
25-3	991001025-3	夹线簧	Rotating stopper	1	
25-4	991001025-4	夹线压板	Thread tension disk presser	1	
25-5	991001025-5	夹线板	Thread tension disk	2	
25-6	991001025-6	夹线螺钉	Tension post	1	
25-7	991001025-7	挑线簧	Take-up spring	1	
25-7	991001025H-7	挑线簧（厚料）	Take-up spring	1	
25-8	991001025-8	调线簧调节座	Tension post socket	1	
25-9	S143574005	夹线螺丝紧固螺钉	Screw 9/64×40 L=5.5	1	
25-10	991001025-19	0型圈	O ring	1	
26	S115952811	夹线器支紧螺钉	Screw 15/64×28 L=7	1	
27	LA1137	松线钉	Tension releasing	1	
28	991001028	针板（薄料/4排牙）	Throat plate	1	
28	991001028D	针板（大针距/3排牙）	Throat plate	1	
28	030301022	针板 B2.6(大旋梭/3排牙)	Throat plate	1	

SiRUBA SEQUENCE LIST		Series		Parts Group	Subclass Remark	Page	
		DL7200S		01		1 / 1	
						Date	
						2024/9/10	
A	29	280001071	安全标示		Safety marking	1	
	30	S044374006Z	针板螺钉		Screw 11/64×40 L=6	2	
	31	7200S01031	左线勾		Arm thread guide left	1	
	32	M070400705	左线勾螺钉		Screw 11/64×40 L=6	1	
	33	991001033	面板调节孔塞		Rubber plug	2	
	34	S094762809	面板螺钉		Screw 3/16×28 L=8	3	
	35	991001035	推板组件		Slide plate asm	1	
	35	991001035D	推板组件（大旋梭）		Slide plate asm	1	
	35-1	991001035-1	推板		Slide plate	1	
	35-2	991001035-2	推板簧		Bed slide spring	1	
B	35-3	S082385602	推板簧螺钉		Screw 3/32×56 L=2.2	2	
	36	991001036	底板支柱		Bed slide spring	4	
	37	280001037	卷边器		Ruler stopper	1	
	38	S074374006Z	卷边器螺钉		Screw 11/64×40 L=6	1	
	39	991001058	橡胶塞		Rubber plug	1	
	40	M180500825	螺钉		Screw	2	
	41	280001041	绕线器组件		Winder assembly	1	
	41-1	991001041-1	挡圈E4		Ring E4	2	
	41-2	991001041-2	绕线轴基座		Bobbin base	1	
	41-3	991001041-3	绕线轴		Spool	1	
C	41-4	991001041-4	O型圈P9		O ring	1	
	41-5	991001041-5	平垫圈S6		Flat washer	1	
	41-6	991001041-6	绕线轮		Winding wheel	1	
	41-7	991001041-7	螺钉M5X5		Screw M5x5	2	
	41-8	991001041-8	橡皮垫圈29		Rubber washer	1	
	41-9	991001041-9	梭芯夹凸轮组件		Shuttle cam asm.	1	
	41-9-1	991001041-9-1	梭芯夹凸轮		Shuttle cam	1	
	41-9-2	991001041-9-2	螺钉M5X5		Screw M5x5	1	
	41-9-3	991001041-9-3	梭芯夹轴		Shuttle clamp shaft	1	
	41-11	991001041-11	平垫圈S6		Flat washer	2	
D	41-12	991001041-12	梭芯压臂柄		Shuttle arm handle	1	
	41-13	991001041-13	螺钉M4X12		Screw	1	
	41-14	991001041-14	梭芯夹		Bobbin clip	1	
	41-15	991001041-15	螺钉SM4. 76		Screw	2	
	41-16	991001041-16	梭芯座		Bobbin base	1	
	41-17	991001041-17	绕线杠杆		Winding lever	1	
	41-18	991001041-18	弹簧		Spring	1	
	41-19	991001041-19	弹簧		Spring	1	
	41-20	991001041-20	O型密封圈S5		O type sealing ring	1	
	41-21	991001041-21	卡簧		circlip	1	
E	42	M080500810	绕线器螺钉		Bobbin screw	3	
	43	991001043	割线刀		Knife	1	
	44	S093574007	割线刀螺钉		Knife screw	2	
	45	720001046B	绕线夹线器组件		Thread tension asm.	1	
	45-1	280001045-1	夹线螺母		Tension nut	1	
	45-2	720001046B-2	夹线螺钉		Tension post	1	
	45-3	991001045-3	夹线弹簧		Tension spring	1	
	45-4	991001045-4	夹线板		Thread tension disk presser	2	
	45-5	991001045-6	夹线螺母（下）		Tension nut	1	

1

2

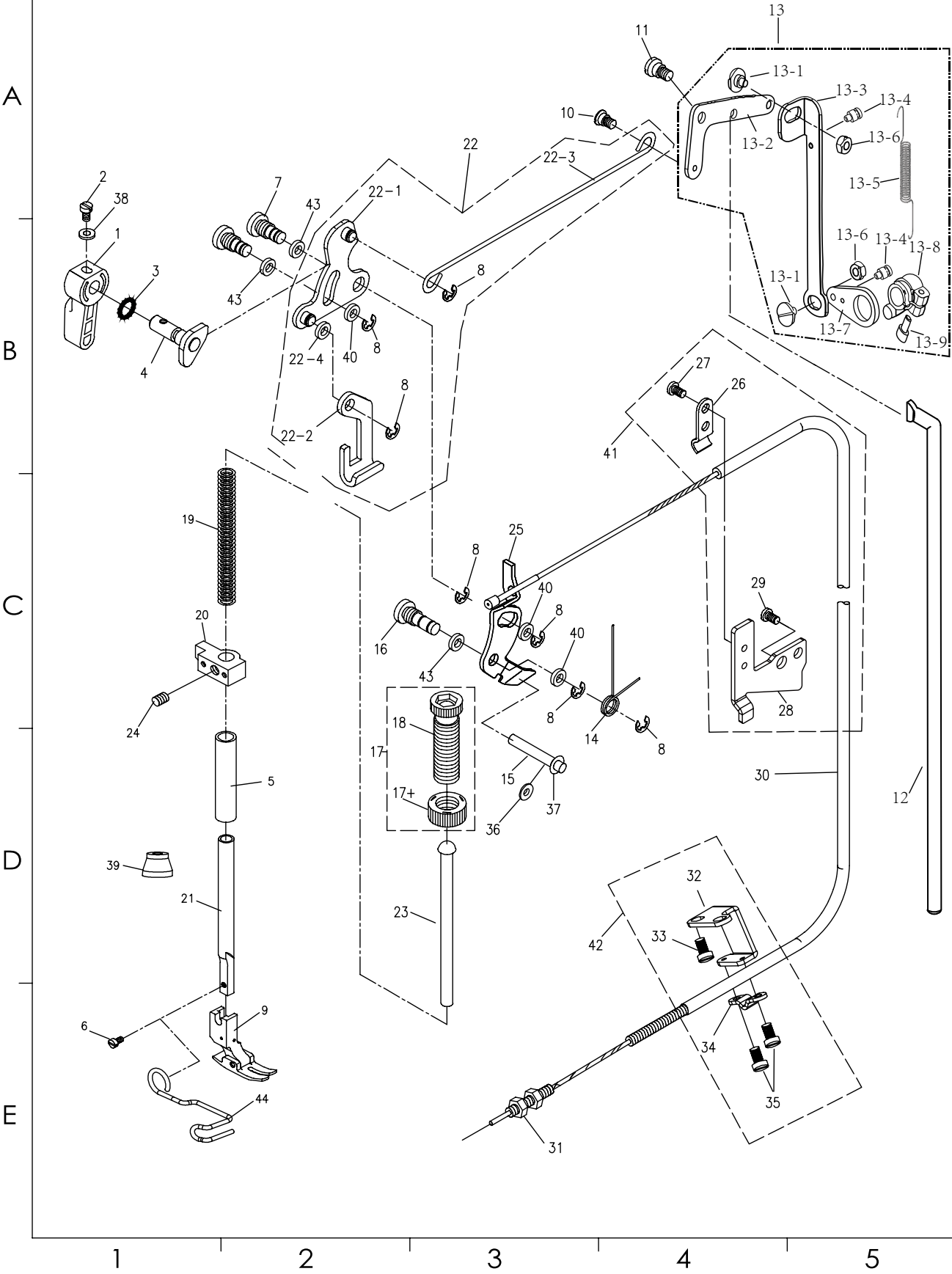
3

4

5

SIRUBA SEQUENCE LIST		Series	Parts Group	Subclass Remark	Page	
		DL7200S	01		1 / 1	
					Date	
					2024/9/10	
A	46	7200S01010	电机罩壳	Motor housing	1	
	47	M180500820B	螺钉	Screw	2	
	48	288001048EG	倒缝灯开关组件	Reverse seam lamp switch assembly	1	
	49	280001049	大线勾	Presser bar thread guide	1	
	50	7200S01050	螺钉	Screw	6	
	51	S153574006-1	大线勾紧定螺钉	Screw	1	
	52	S044762810	灯固定螺钉	Screw	1	
	53	S074374065	三眼线勾螺钉	Screw	1	
	54	991001052	油线板组件	Oil plate assembly	1	
	55	S093574016	油线板固定螺钉	Screw	2	
B	56	991001056G	绕线器垫片	Bobbin Washer	1	
	57	991004042	防油板垫片	Grease plate gasket	1	
	58	730001058E	线夹1	Wire clip 1	1	
	59	S094762806	线夹螺钉	Screw	1	
	60	991001039	铆钉	Pole	2	
	61	7200C01061	型号牌	Modle plate	1	
	62	W230651004	弹簧垫片	Spring washer	2	
	63	280001066-1	线夹	Plastic clip	1	
	64	7200S01064	螺母	Nu	2	
C						
D						
E						
6	1	2	3	4	5	

<b>SIRUBA</b>  PARTS LIST	Series	Parts Group	Subclass Remark	Page
	DL7200S	02		1 / 1
				Date
				2024/9/10



SIRUBA  SEQUENCE LIST		Series	Parts Group	Subclass Remark	Page	
		DL7200S	02		1 / 1	
					Date	
					2024/9/10	
序号 Ref.No.	新编号 new part No.	名 称 Part name	Name of parts	数量 Qty	备注 Note	
A	1	72000301 0	压脚扳手	Hand lifter	1	
	2	991004002	压脚扳手螺钉	Screw 9/64×40 L=10	1	
	3	991004003	压脚扳手轴O型圈	Rubber ring	1	
	4	LB1112	压脚扳手凸轮部件	hand lifter cam asm	1	
	5	991004005	压杆轴套	Presser bar bushing lower	1	
	6	S073574011	压脚螺钉	Screw 9/64×40 L=11	1	
	7	991004007	前杠杆螺纹销	Link shaft	2	
	8	991004008	卡簧	E-ring 5	7	
	9	991004009	压脚部件	Presser foot asm	1	
	9	991004009H	压脚部件(厚料)	Presser foot asm	1	
B	10	991004010	抬压脚拉杆螺钉	Hinge screw	1	
	11	991004011	后杠杆轴拉螺钉	Hinge screw	1	
	12	991004012	抬压脚顶杆	Knee lifter connecting rod	1	
	13	11001392	抬压脚组件 (仓库实物)	Lift and press foot component	1	
	13-1	11001392-1	螺钉	Screw	2	
	13-2	11001392-2	后杠杆	Rear leverage	1	
	13-3	11001392-3	提升连杆	Lift the connecting rod	1	
	13-4	11001392-4	挂钩螺钉	screw	2	
	13-5	11001392-5	弹簧	Spring	1	
	13-6	021500106	螺母	Nut	2	
C	13-7	11001392-7	档片	File slide	1	
	13-8	11001392-8	抬牙曲柄	crank	1	
	13-9	M180500816	螺钉	scerw	1	
	14	991004022	松线顶板复位簧	Tension release return spring	1	
	14	991004022H	松线顶板复位簧(厚料)	Reset spring of loose thread roof (thick material)	1	
	15	LA1137	松线辅钉	Tension release supporting pin	1	
	16	991004026	松线顶板螺纹销	Tension release shaft	1	
	17	720003025 C	调压螺钉 组件	Presser adjurting screw nut	1	
	17	720003037CH	调压螺钉 组件(厚料)	Presser adjurting screw nut	1	
	17+	720003025	调压螺母	Presser adjurting screw nut H	1	
D	18	720003025C-1	调压螺钉	Presser spring regulator	1	
	18	720003025CH-1	调压螺钉 (厚料)	Presser spring regulator H	1	
	19	991004029	调压簧	Presser adjurting spring	1	
	19	870004004	调压簧 (厚料)	Presser adjurting spring H	1	
	20	280004006	压杆导架	Presser bar guide bracket	1	
	21	991004031	压杆	Presser bar	1	
	22	281004019	前杠杆组件	Knee lifting cross rod asm	1	
	22-1	991004032-1	抬压脚前杠杆	Hand lifter link	1	
	22-2	991004032-2	压脚升降板	Lifting lever	1	
	22-3	180004022	抬压脚拉杆	Knee lifting cross rod	1	
E	22-4	280004019-4	垫圈	Washer	1	
	23	991004033	调压导杆	Presser guide bar	1	
	24	S116354006	导架螺钉	Screw	1	
	25	991004025	松线顶板	Thread tension relese wire	1	
	26	991004017	拉线压板	Stay plate	1	
	27	S073574007	上压板紧固螺钉	Screw 9/64×40 L=7	1	
	28	720004028C	上压线底板	Wire holder bracket upper	1	
	29	7200C10009	上压板组件紧固螺钉	Screw 3/16×28 L=6	1	
	30	991004034	拉线 (长)	Pull line(long)	1	
	30	991004034-D	拉线 (短)	Pull line(short)	1	
	31	991004020	拉线调节螺母	Nut 3/16×32	2	
	32	991004023	松线钢丝绳下支架	Lower bracket	1	
	33	S075952810C	下支架紧固螺钉	Screw 15/64×28 L=10	2	
	34	991004021	下拉线压板	Down stay plate	1	
	35	S073574014	下压板紧固螺钉	Screw 9/64×40 L=7	2	



SiRUBA  SEQUENCE LIST		Series	Parts Group	Subclass Remark	Page	
		DL7200S	02		1 / 1	
					Date	
					2024/9/10	
36	870003033	挡油垫		Oil retaining pad	1	
37	930001065	卡簧		Reed spring	1	
38	991004042	垫片		Shim	1	
39	991004041	挡油帽		Oil retaining cap	1	
40	991002036	垫片		Shim	3	
40	991002036H	垫片		Shim	3	
41	720004028C	上支架组件		Subassembly	1	
42	991004038	下支架组件		Lower bracket assembly	1	
43	991004039-1	红纸垫		Rubber gasket	3	
44	991004036	压脚保护架		Presser foot protection frame	1	

<b>SIRUBA</b>  PARTS LIST	Series	Parts Group	Subclass Remark	Page
	DL7200S	03		1 / 1
				Date
				2024/9/10

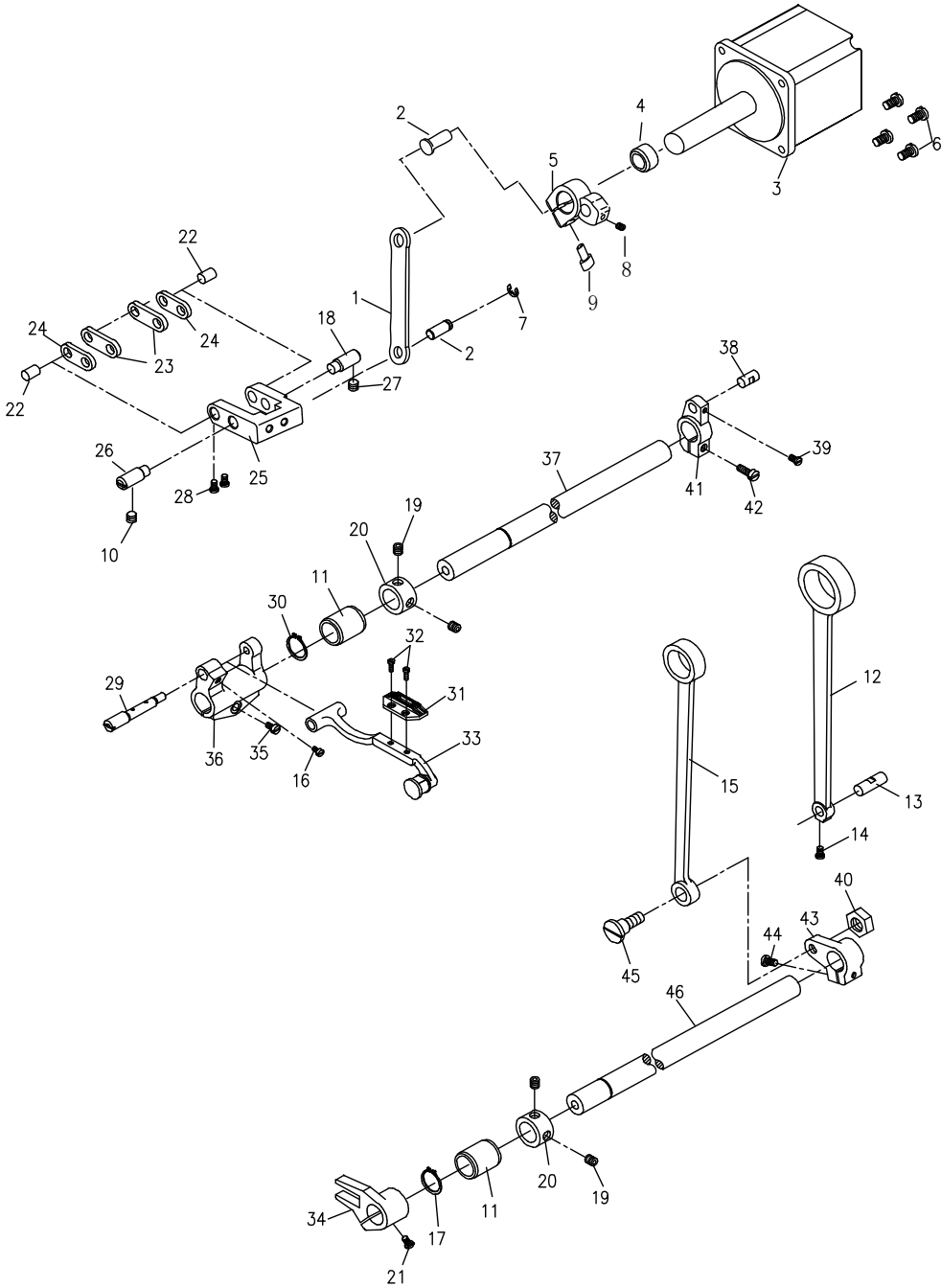
A

B

C

D

E



<div>SIRUBA</div> <div>SEQUENCE LIST</div>		Series	Parts Group	Subclass Remark	Page
		DL7200S	03		1 / 1
					Date
					2024/9/10
序号 Ref.No.	新编号 new part No.	名 称 Part name	Name of parts	数量 Qty	备注 Note
A	1	11001391-1	倒送料连杆	Feed adjust rod	1
	2	288004002	倒送料连杆销	Feed regulator pin	2
	3	288E205003G	倒缝步进电机	Reverse stepping motor	1
	4	500015001	油封	Oil seal	2
	5	11001391-2	倒缝操纵杆曲柄	Reverse lever crank	1
	6	M180400714	螺钉	Screw	4
	7	288004040	卡簧	E-ring	1
	8	M180500516	螺钉	Screw	1
B	9	S1444763206	螺钉 3/16*32	Screw	1
	10	991002001	左销螺钉	Screw	1
	11	991005049	送布、抬牙轴前轴套	Feed rocker shaft bushing	2
	12	991005012	送料连杆	Rocker shaft connecting rod	1
	13	991005013	送料连杆销	Walking foot long pin	1
	14	S073574005	送料连杆销螺钉 9/64×40	Screw 9/64×40	1
	15	991005015	抬牙连杆	Connecting rod	1
	16	S084374007	牙架销螺钉 11/64×40	Screw 11/64×40	1
C	17	991005030	轴用卡簧	Retaining ring	1
	18	991005059	摆动轴板座右销	Adjusting link fulcrum shaft	1
	19	S126354004	抬牙轴挡圈螺钉 1/4x40	Screw 1/4x40	4
	20	991002015	挡圈	Thrust collar	2
	21	S084374012	抬牙叉螺钉 11/64×40	Screw 11/64×40	1
	22	991005022	短摆动板连接销	Walking foot short pin	2
	23	991005023	长摆动板	Connecting link long pin	2
	24	991005024	短摆动板	Connecting link short pin	2
D	25	991005025	摆动座	Feed adjust link asm	1
	26	991005026	摆动板座右销	Adjusting link fulcrum shaft	1
	27	991002001	右销螺钉15/64×28(2-32)	Screw 15/64×28	1
	28	S123574005	连杆销螺钉 9/64×40	Screw 9/64×40	2
	29	991005029	牙架偏心销	Feed bar shaft	1
	30	991005030	轴用卡簧	Retaining ring	1
	31	D1711D	送布牙(厚料/3排牙)	Feed dog	1
	31	991005031D	送布牙 (大针距/3排牙)	Feed dog	1
E	31	D1701	送布牙 (四排牙)	Feed dog	1
	32	S073184406	送布牙螺钉 1/8×44	Screw 1/8×44	2
	33	991005033D	牙架部件	Feed bar asm	1
	34	991005054	抬牙叉	Driving shaft crank asm.	1
	35	S074762812	牙架座螺钉 3/16×28	Screw 3/16×28	1
	36	991005052	牙架座(牙架曲柄)	Feed bar crank asm.	1
	37	991005037	送布轴	Feed rocker shaft	1
	38	991005038	送布曲柄销	Walking foot middle pin	1
	39	S073574006	曲柄销螺钉 9/64×40	Screw 9/64×40	1
	40	N217142805	抬牙连杆轴位螺母	Nut	1
	41	991005041	送布曲柄	Feed rocker shaft crank	1
	41	991005041D	送布曲柄(大针距15mm)	Feed rocker shaft crank	1
	42	S074762815	送布曲柄螺钉 3/16×28	Screw 3/16×28	1
	43	991005043	抬牙后曲柄	Lifting rocker asm.	1
	44	S074762815	抬牙后曲柄螺钉 3/16×28	Screw 3/16×28	1
	45	991005045	抬牙连杆轴位螺钉	Hinge screw	1
	46	991005046	抬牙轴	Feed driving shaft	1

1

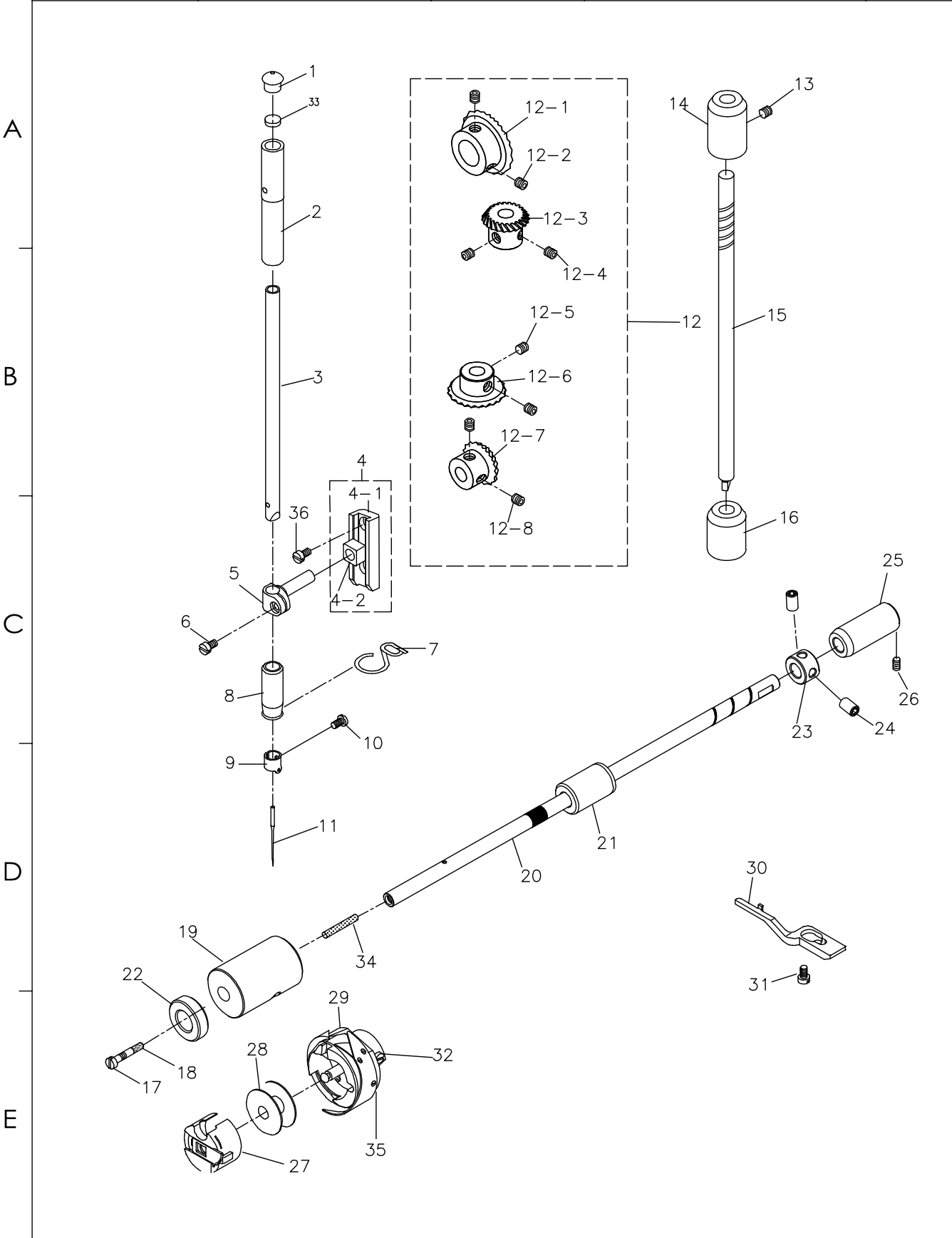
2

3

4

5

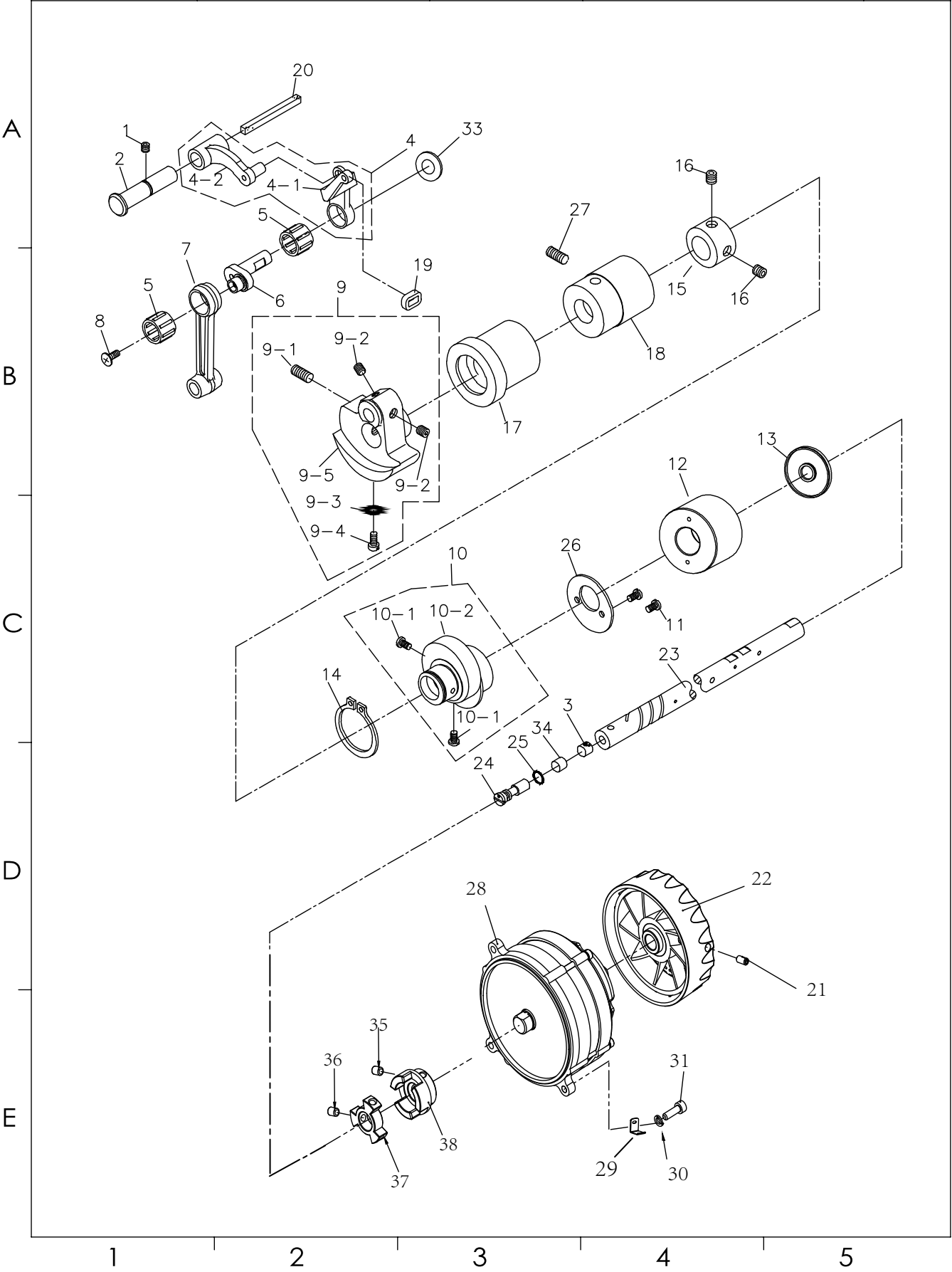
<b>SIRUBA</b>  PARTS LIST	Series	Parts Group	Subclass Remark	Page
	DL7200S	04		1 / 1
				Date
				2024/9/10



<b>SIRUBA</b>  SEQUENCE LIST		Series	Parts Group	Subclass Remark	Page
		DL7200S	04		1 / 1
					Date
					2024/9/10
序号 Ref.No.	新编号 new part No.	名 称 Part name	Name of parts	数量 Qty	备注 Note
A	1	991003001	针杆上孔塞	Upper Cap	1
	2	991003002	针杆上套	Needle bar bushing upper	1
	3	991003003	针杆	Needle bar	1
	3	991003003H	针杆(厚料)	Needle bar (heavy duty)	1
	4	991003032A	针杆滑块座组件	Slide block	1
	4-1	991003032	针杆连接柱滑块座	Slide block base	1
B	4-2	991003006	针杆连接柱滑块	Slide block	1
	5	991003004	针杆连接柱	Needle rod holder asm.	1
	6	S073574007	针杆连接柱螺钉	Screw 9/64×40 L=7.5	1
	7	991003007M	针杆下套线钩	Needle bar thread guide	1
	8	991003008	针杆下套	Needle bar bushing lower	1
	8	991003008H	针杆下套(大旋梭)	Needle bar bushing lower	1
C	9	991003010	针杆过线环	Needle bar thread guide	1
	9	030302025	针杆过线环(9911机型)	Needle bar thread guide	1
	10	S073184406	机针螺钉	Screw 1/8×44 L=4.8	1
	11	991014011	机针 DBx5 14#	Needle DBx1 #14	1
	11	991003011H-5	机针 DPx5 20#	Needle DPx5 #20	1
	12	991003012	伞齿轮组件	Gear pinion asm.	1
D	12-1	991003014	上轴伞齿轮	Gear asm.	1
	12-2	S116354008	伞齿轮螺钉	Screw 1/4×40 L=8	2
	12-3	991003016	竖轴上伞齿轮	Pinion asm.	1
	12-4	S116354008	伞齿轮螺钉	Screw 1/4×40 L=8	2
	12-5	S116354008	伞齿轮螺钉	Screw 1/4×40 L=8	2
	12-6	991003019	竖轴下齿轮	Gear asm.	1
E	12-7	991003021	下轴伞齿轮	Pinion asm.	1
	12-8	S116352808	伞齿轮螺钉	Screw	2
	13	S145952806	竖轴上套紧固螺钉	Screw	1
	14	991003016-1	竖轴上轴套	Upright shaft bushing, lower	1
	15	991003014-1	竖轴	Upright shaft	1
	16	991003017	竖轴下轴套	Upright shaft bushing, lower	1
F	17	991003028	下轴限油螺钉	Oil seal screw	1
	18	991003027	下轴限油芯	Oil wick	1
	19	991003026	下轴前轴套	Lower shaft front metal	1
	19	991105012	下轴前轴套(9911机型)	Lower shaft front metal	1
	20	991003022	下轴	Lower shaft	1
	20	991107001	下轴(9911机型)	Lower shaft	1
G	21	991006047	下轴中套	Lower axle sleeve	1
	22	030306031	下轴前套油封	Oil Seal	1
	23	991003020	下轴挡圈	Thrust collar asm.	1
	24	S074374005	下轴挡圈螺钉	Screw 11/64×40 L=5	2
	25	991003018	下轴后轴套	Bushing rear	1
	26	S145952806	下轴后轴套螺钉	Screw	1
H	27	991003030	梭壳	Bobbin case	1
	27	030306010	梭壳(配9911)	Bobbin case	1
	28	991003029	梭芯	Bobbin	1
	28	030306011	梭芯(配9911)	Bobbin	1

SIRUBA  SEQUENCE LIST		Series		Parts Group	Subclass Remark		Page	
		DL7200S		04			1 / 1	
							Date	
							2024/9/10	
A	29	991003015	旋梭		Hook asm.		1	
	29	030306012	大旋梭 (9911机型)		Big Hook asm.		1	
	30	991003023B	旋梭定位勾		Bobbin case holder		1	
	30	030306026	旋梭定位勾 (9911机型)		Bobbin case holder		1	
	31	S084374011	旋梭定位勾螺钉		Screw SM11/64×40 L=11		1	
	32	991003032	旋梭螺钉		Screw		2	
	33	280003036R	针杆油毡		Needle bar linoleum		1	
	34	LL1122	油芯		Oil core		1	
	35	991003037	螺钉		Screw		1	
	36	S074374007P	滑块座螺钉		Screw SM11/64×40 L=8		2	
B								
C								
D								
E								

<b>SIRUBA</b>  PARTS LIST	Series	Parts Group	Subclass Remark	Page
	DL7200S	05		1 / 1
				Date
				2024/9/10



<b>SIRUBA</b>  SEQUENCE LIST	Series	Parts Group	Subclass Remark	Page
	DL7200S	05		1 / 1
				Date
				2024/9/10

序号 Ref.No.	新编号 new part No.	名 称 Part name	Name of parts	数量 Qty	备注 Note
A	1	挑线连杆销螺钉	Screw 15/64×28 L=10.5	1	
	2	挑线连杆销	thread take-up crank shaft	1	
	3	280003036-1	曲柄油量限制毡	1	
	4	991002004	挑线连杆组件	1	
	4	991002004H	挑线连杆组件（厚料）	1	
	4-1	991002004-1	挑线杆	1	
	4-2	991002004-2	挑线连杆	1	
	4-2	991002004-2D	挑线连杆	1	
	5	991002005	挑线杆滚针轴承	2	
	6	991002006	挑线曲柄	1	
B	6	991002007H	挑线曲柄(厚料)	1	
	7	991002007	针杆连杆	1	
	8	991002008	挑线曲柄左旋螺钉	1	
	9	991002009	针杆曲柄组件	1	
	9	991102009H	针杆曲柄组件(厚料)	1	
	9-1	S154374006	针杆曲柄紧固螺钉	1	
	9-2	S116354006	挑线曲柄定位螺钉	2	
	9-3	991002009-3	定位螺丝0型圈	1	
	9-4	S077142815	针杆曲柄定位螺钉	1	
	9-5	991002009-6	针杆曲柄	1	
C	10	991002010	送料偏心轮组件	1	
	10-1	S076354011	送料偏心轮螺钉	2	
	10-2	991002010-2	送料偏心轮	1	
	11	S093574006	送料偏心轮盖板螺钉	2	
	12	288002011	上轴后套	1	
	13	991002013	上轴后套油封	1	
	14	991002014	卡簧	1	
	15	991002015	上轴挡圈	1	
	16	S116354006	上轴挡圈螺钉	2	
	17	991002017	上轴前轴套	1	
D	18	870002008	上轴中轴套	1	
	19	991002019	挑线杆橡皮套	1	
	20	991009008	挑线连杆销供油线	1	
	21	M140500806	手轮螺钉	2	
	22	288C02019G	手轮	1	
	23	991002023	上轴	1	
	24	991002024	上轴油量调节销	1	
	25	991002025	上轴油量调节销0型圈	1	
	26	991002026	送料偏心轮盖板	1	
	27	991005027	上轴中轴套螺钉	1	
E	28	28800202EQX-2	电机	1	
	29	280001066-1	限位	1	
	30	280002014	弹性垫圈	3	
	31	M180500816	螺钉	4	
	32	M070300505	螺钉 M3*5	3	
	33	W220801605	垫片	1	
	33	W220801605-1	垫片	1	
	34	870002013	油量销套	1	
	35	M140601006	螺钉	3	
	36	M140601008	螺钉	3	
	37	991002028	联轴器A	1	
	38	991002023	联轴器B	1	

1

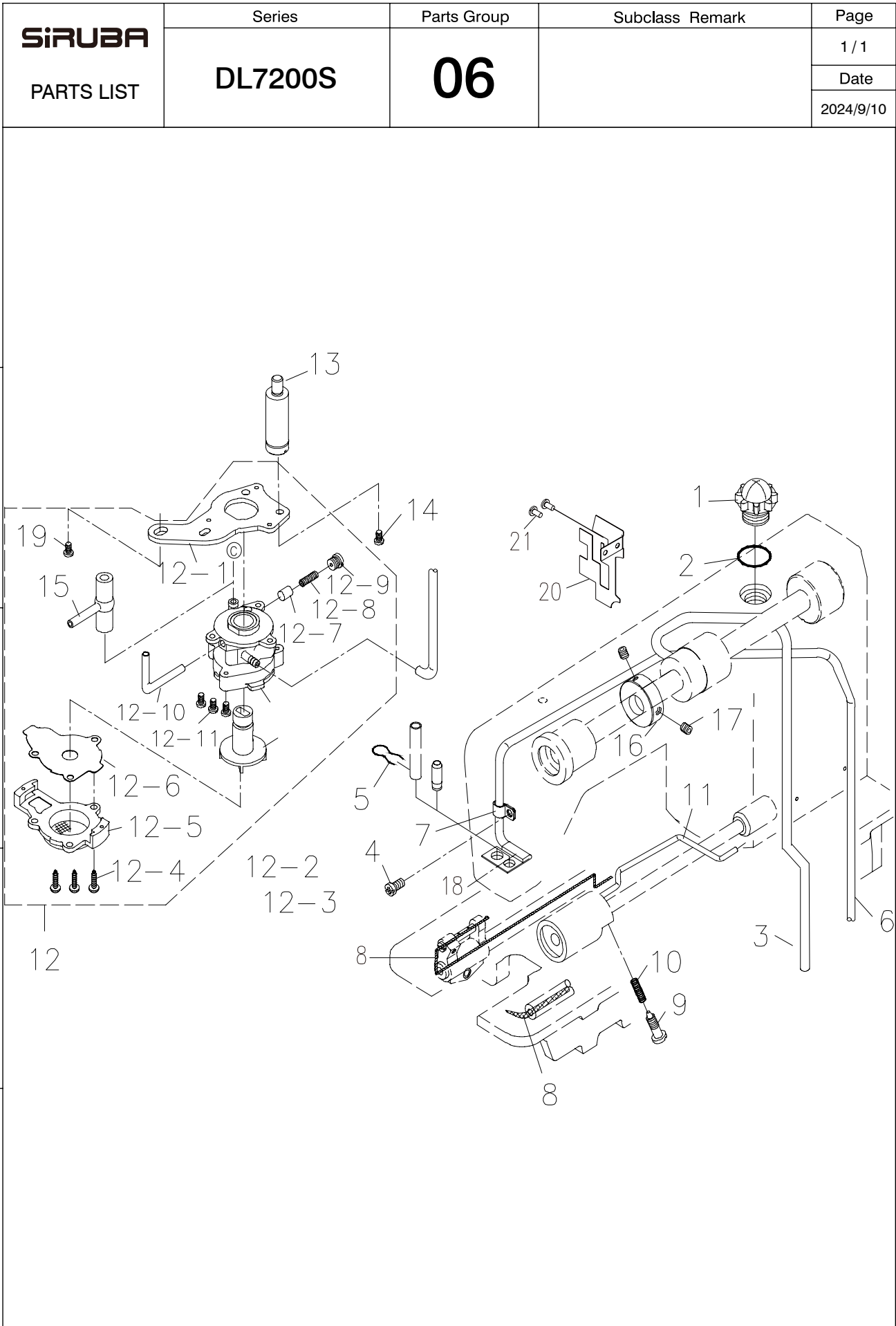
2

3

4

5



SIRUBA  PARTS LIST	Series	Parts Group	Subclass Remark	Page
	DL7200S	06		1 / 1
				Date
				2024/9/10
<div></div>				



<div>SIRUBA</div> <div>PARTS LIST</div>	Series	Parts Group	Subclass Remark	Page
	DL7200S	07		1 / 1
				Date
				2024/9/10

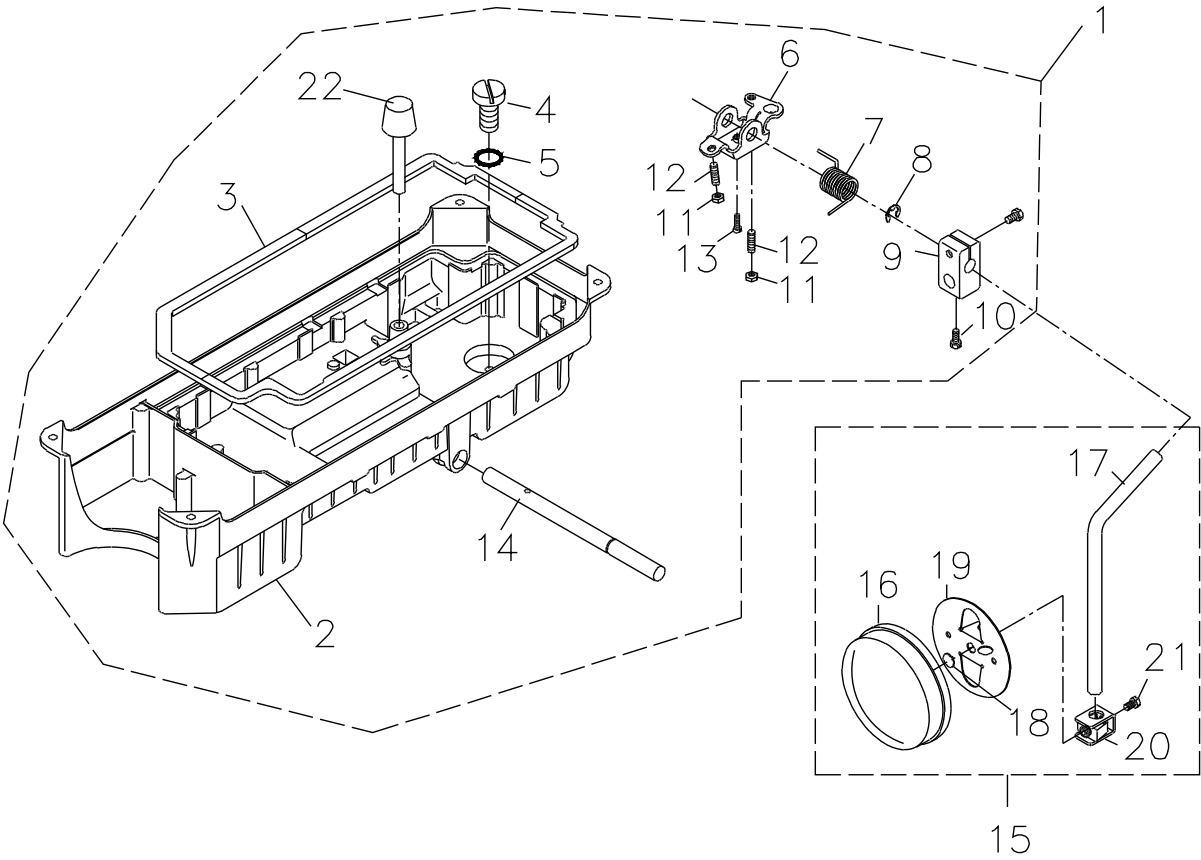
A

B

C

D

E



SiRUBA  SEQUENCE LIST		Series	Parts Group	Subclass Remark	Page
		DL7200S	07		1 / 1
					Date
					2024/9/10
序号 Ref. No.	新编号 new part No.	名 称 Part name	Name of parts	数量 Qty	备注 Note
1	991010001	油盘部件	Oil reservoir asm	1	
2	991010002	油盘	Oil reservoir	1	
3	991010003	油盘垫	Oil reservoir gasket	1	
4	991014020	排油孔螺钉	Screw 5/16x24 L=7	1	
5	991010005	排油孔螺钉O型圈	Rubber ring	1	
6	991010006	抬压脚双向曲柄	Knee lifting rotating arm	1	
7	991010007	双向曲柄扭簧	Spring	1	
8	991010008	抬压脚轴开口挡圈	E-ring	1	
9	991010009	抬压脚操纵杆接头	Vertical shaft fitting arm	1	
10	991010010	操纵杆接头螺钉	Screw	2	
11	N210601006	双向曲柄限位调节螺母	Nut M6	2	
12	M120601030	双向曲柄限位调节螺钉	Screw M6 L=30	2	
13	M190601018	双向曲柄螺钉	Screw M6 L=17.5	1	
14	991010014	抬压脚轴	Knee press cross shaft	1	
15	991010015	操纵杆部件	Knee pan plate asm	1	
16	991010016	操纵杆软垫	Knee pan plate cover	1	
17	991010017	操纵杆	Knee pan upright shaft	1	
18	991010018	操纵杆垫	Knee pan plate rubber	1	
19	991010019	操纵板	Knee pan plate	1	
20	991010020	操纵杆接头	Knee pan plate support	1	
21	M190601012	接头螺钉	Screw M6 L=12	1	
22	991010022	抬压脚顶杆	Knee lifter push rod	1	

<div> <div>SIRUBA</div> <div>PARTS LIST</div> </div>	Series	Parts Group	Subclass Remark	Page
	DL7200S	08		1 / 1
				Date
				2024/9/10

A

B

C

D

E

1

2

3

4

5

SIRUBA  SEQUENCE LIST	Series	Parts Group	Subclass Remark	Page
	DL7200S	08		1 / 1
				Date
				2024/9/10

序号 Ref.No.	新编号 new part No.	名 称 Part name	Name of parts	数量 Qty	备注 Note
1	S074374012-1	螺钉II/64"x40 L=12	Screw SM11/64x40 L=12	2	
2	W220801605	电磁铁垫片	Washer	1	
3	991006003	刀架压板	Partiality shank	1	
3+	991006003+	刀架压板垫圈	Partiality shank washer	2	
4	991006004	动刀固定螺钉	Screw	2	
5	991006005	动刀	Motorial knife	1	
5	991006005H-1	动刀（厚料）	Motorial knife (heavy duty)	1	
5	991006005D	动刀（大旋梭）	Motorial knife (big hook)	1	
6	991006006	螺母SM11/64"x40	Nut SM11/64x40	1	
7	991006007	动刀架	Knife bracket	1	
7	991110008	动刀架（9911机型）	Knife bracket	1	
8	S043574014	定刀螺钉	Screw	1	
9	LU1711	固定刀	Secant knife	1	
9	991006009D	固定刀（大旋梭）	Secant knife(big hook)	1	
10	991006010	分线片	Protect needle patch	1	
11	991006048	垫圈4.5x8x0.5	Washer 4.5x8x0.5	2	
12	991006012	切刀驱动曲柄	Thread shear rock arm	1	
13	991006013	驱动曲柄止动块	Positioning block	1	
14	991006014	弹簧	Spring	1	
15	S094763214	螺钉SM,3/16"x32 L=14	Screw SM3/16x32 L=14	1	
16	991006016	切线轴套	Axle sleeve	1	
17	S145952806	螺钉	Screw SM15/64x28 L=6	1	
18	991006018	驱动曲柄轴衬套	Short bush	1	
19	S156354010	螺钉SM1/4"x40 l=10	Screw SM1/4x40 L=10	2	
20	991006020	切线凸轮垫	Pole	2	
21	991006021	凸轮	Thread shear cam	1	
22	S073574006-1	螺钉SM9/64"x40 L=5	Screw SM9/64x40 L=6	1	
23	991006023	连杆螺钉	Screw	2	
24	991006024	连杆	Knife shaft connecting rod	1	
25	991006025	切刀驱动曲柄轴	Cutter crank shaft	1	
26	991006026	扭簧端盖	Spring cover	1	
27	991006027	切线凸轮复位弹簧	Spring	1	
28	991006028	切线凸轮曲柄组件	Thread shear rock arm shaft	1	
29	S116354006	螺钉SM11/64"x40	Screw	1	
30	991006030	滚柱	Rool shaft assy	1	
31	991006031	螺母	Nut	1	
32	991006032	切刀驱动轴	Thread shear shaft	1	
33	991006033	卡簧E6	Retaining ring	1	
34	991006034	电磁铁缓冲垫	Magnetic plug cushion mat	1	
35	991006035	切线电磁铁顶销	Magnetic plug pin	1	
36	991006036	螺母SM1/4"x40	Nut SM1/4x40	1	
37	991006037	垫圈	Washer	1	
38	S075952810C	螺钉	Screw	1	
39	991006039	螺母M4	Nut M4	2	
40	991006040	切线电磁铁支架	Magnetic plug cushion mat	1	
41	991006041	松线座	Thread loose seat	1	
42	991006042	弹簧	Spring	1	
43	991006043	螺钉	Screw	1	
44	288E06043	剪线电磁铁组件	Magnetic solenoid asm	1	
45	S123574014	定刀调节螺钉	Screw	1	

1

2

3

4

5

<b>SIRUBA</b>  PARTS LIST	Series	Parts Group	Subclass Remark	Page
	<b>DL7200S</b>	<b>09</b>		1 / 1
				Date
				2024/9/10

A

B

C

D

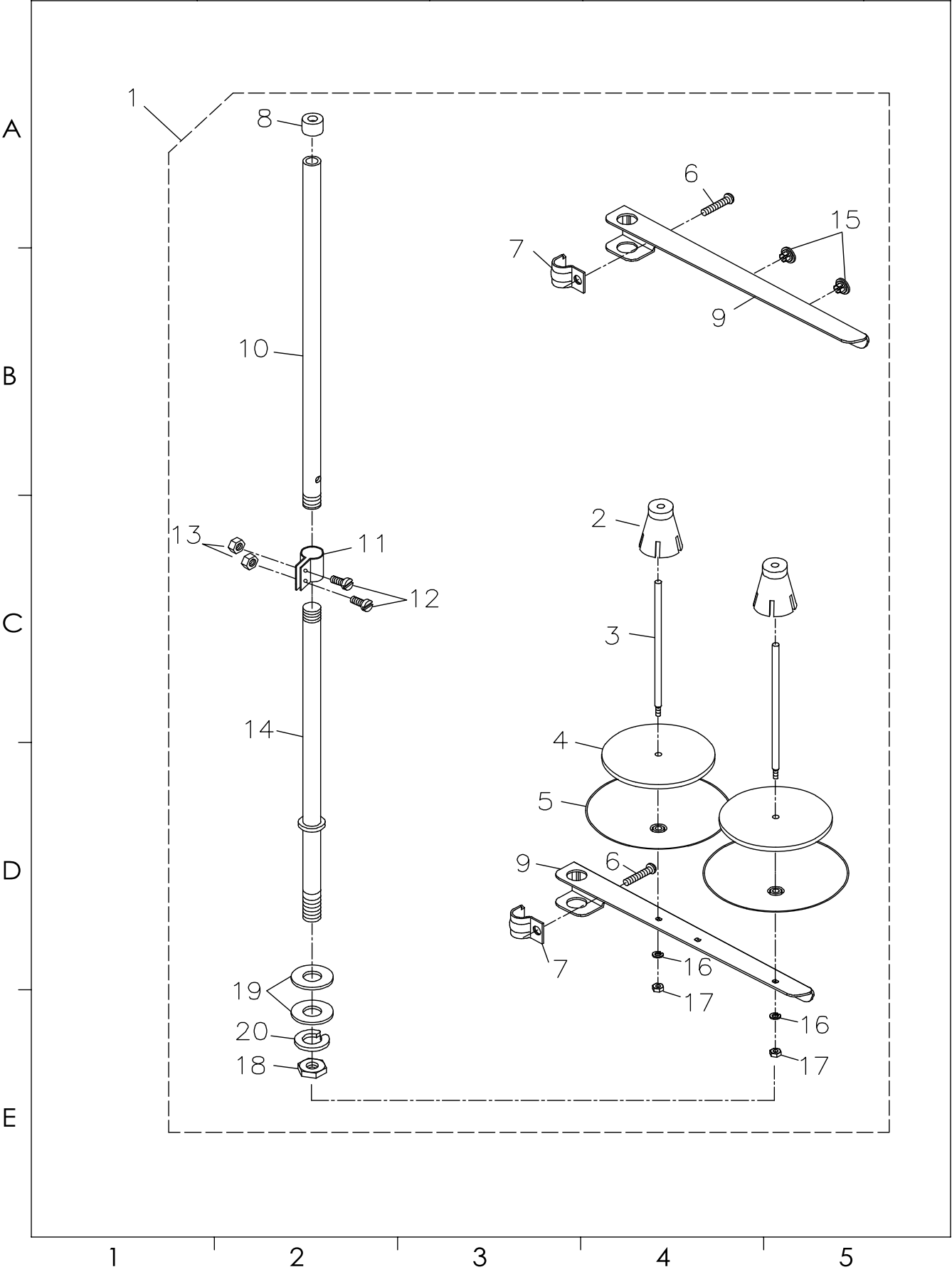
E

Diagram illustrating the assembly of the SIRUBA DL7200S device, showing the front panel (1) and the internal components (5, 6, 7) being installed into the back panel (3). The diagram includes callouts for various parts: 1 (Front Panel), 2 (Screw), 3 (Back Panel), 4 (Screws), 5 (Internal Component), 6 (Wires), 7 (Screw), and 8 (Spring).





<b>SIRUBA</b>  PARTS LIST	Series	Parts Group	Subclass Remark	Page
	DL7200S	10		1 / 1
				Date
				2024/9/10





SiRUBA  PARTS LIST	Series	Parts Group	Subclass Remark	Page
	DL7200S	11		1 / 1
				Date
				2024/9/10

11

12

13

10

1

2

9

3

6

4

5

7

8

18

16

15

17

1

2

3

4

5

SIRUBA  SEQUENCE LIST		Series	Parts Group	Subclass Remark	Page	
		DL7200S	11		1 / 1	
					Date	
					2024/9/10	
序号 ef.No.	新编号 new part No.	名 称 Part name	Name of parts	数量 Qty	备注 Note	
A	1	991014001	机头连接钩组件	Machine hinge plate asm.	2	
	2	991014002	机头连接钩座钉	Nail	4	
	3	991014003	机头连接钩座	Machine hinge plate	2	
	4	991014004	螺丝刀（大）	Screw driver, large	1	
	5	991014005	螺丝刀（中）	Screw driver. mendium	1	
	6	991014006	螺丝刀（小）	Screw driver. small	1	
	7	991003029	梭心	Bobbin	2	
	8	991014008	机头罩	Machine head cover	1	
B	9	288011012	机头支柱	Machine head holder	1	
	10	991014010	油箱部件	Oil reservoir asm.	1	
	11	991014011	机针 DBx1 #14	Needle DBx1 #14	4	
	11	991003011H-5	机针 DPx5 #20	Needle DPx5 #21	4	
	12	991014012	防震垫(A)	quakeproof washer A	2	
	13	991014013	防震垫(B)	quakeproof washer B	2	
	15	990000002	控速器	speed controller	1	
	16	991014018	控速器安装螺钉	speed controller screw	5	
	17	990000001	控速器拉杆	speed controller pull rod	1	
	18	990000010	电源线	Power cord	1	
C						
D						
E						

1

2

3

4

5





高林股份有限公司  
KAULIN MFG. CO., LTD.

由於對產品的改良及更新，本產品使用說明書中與零件圖之產品及外觀的修改恕不事先通知！  
The specification and/or appearances of the equipment described in this instruction book & parts list are subject to change because of modification which will without previous notice.  
BYL-13S63.SEP.2024