

# SIRUBA

零件圖

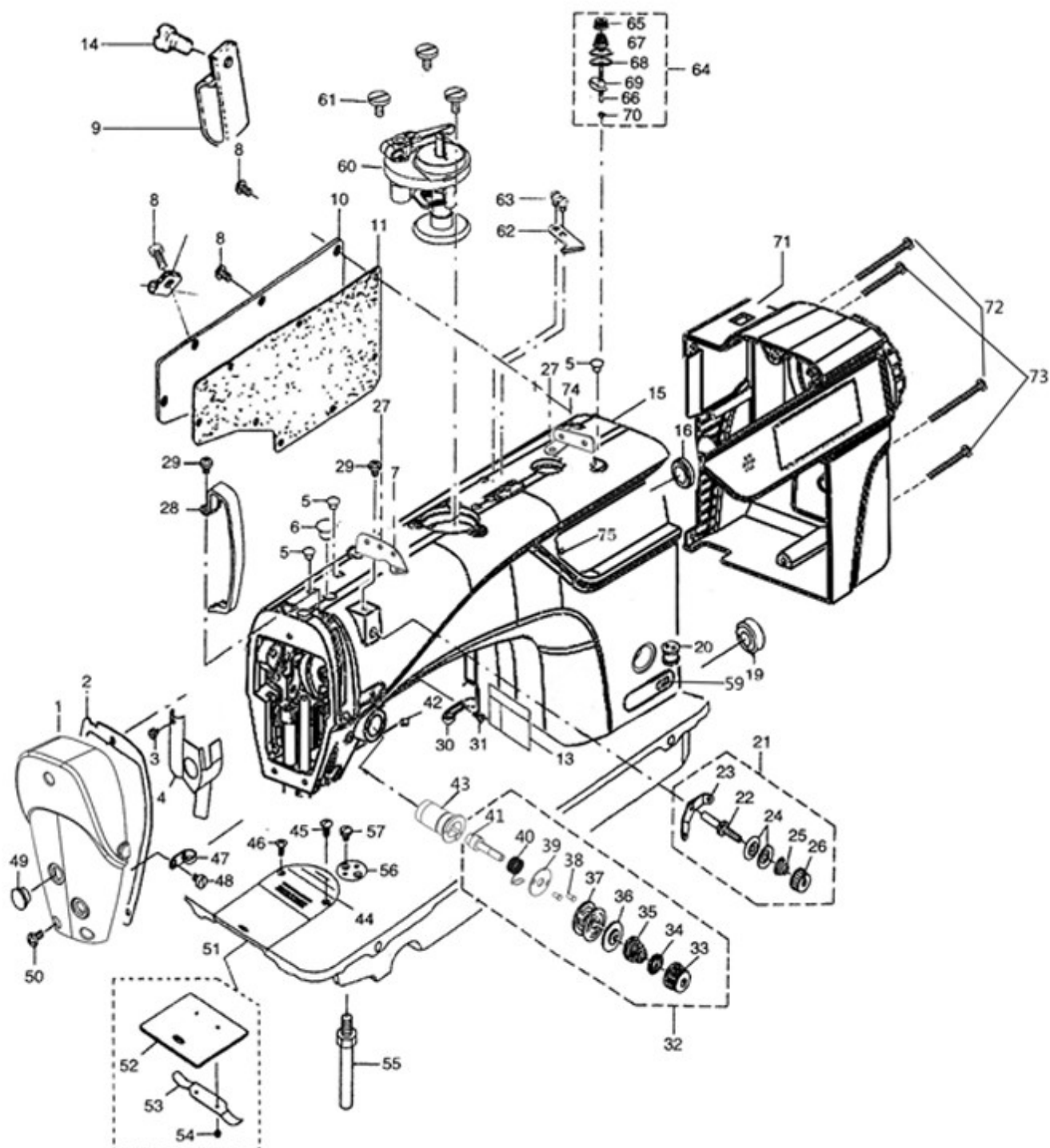
PARTS LIST

DL7200HP



# 1. 機殼-外裝部件

MACHINE FRAME&MISCELLANEOUS COVER COMPONENTS

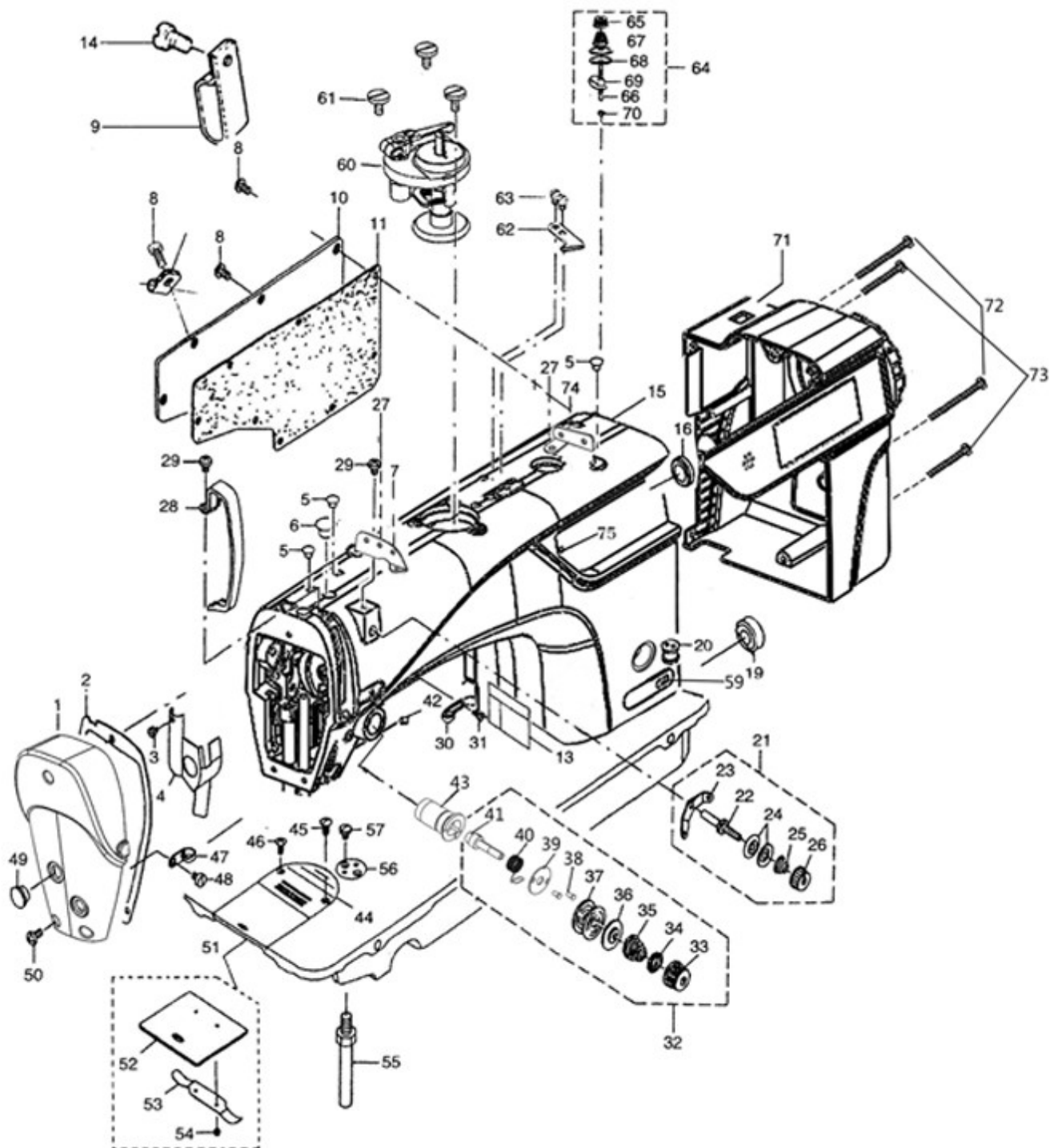


## 2. 機殼-外裝部件 MACHINE FRAME&MISCELLANEOUS COVER COMPONENTS

序號 Ref. NO.	件 號 Part NO.	名 稱	Description	數量 Qty	備註 Note
1	G20-1-1	面板	Face plate	1	
2	GR9890-02	面板墊	Face plate agsket	1	
3	GS44	防油板螺釘	Screw 1/8x44 L=4	1	
4	GR3403	面板防油板部件	Arm oil shifld asm.	1	
5	GR3344	挑線連杆銷螺孔塞	Rubber plug	3	
6	GR1463	針杆曲柄螺孔塞	Rubber plug	1	
7	GR9890-42	三孔過線	Three holes thread guide plate	1	
8	GS053	後窗板螺釘	Screw 3/16x28 L=9	7	
9	GR1083-8	導線夾板	Cord holder	1	
10	GK9890-03	後窗板	Side plate	1	
11	GR9890-04	後窗板墊	Gasket	1	
12					
13	GQ196	安全指示牌	Safety label	1	
14	GS053-8	後窗板螺釘	Screw 3/16x28 L=14	3	
15		機殼	Machine cover	1	
16	GR3345	送料調節器孔塞	Rubber plug	1	
17					
18					
19	GR1464	下軸盲孔塞	Rubber plug	1	
20	GR1005-8	導線過線套	Magnet cord rubber	1	
21	GR9890-29	調線夾線器組件	Thread tension asm.	1	
22	GR7650	調線夾線螺釘	Thread tension post	1	
23	GR7673	調線過線板	Thread tension guide	1	
24	GR1015-8	小夾線板	Thread tension disk	2	
25	GW233-8	小夾線簧	Thread tension spring	1	
26	GS1750	小夾線螺母	Thread tension nut	1	
27	GS551	小夾線器組件螺釘	Screw 11/61 x 40 L=6	1	
28	GK240	挑線杆防護罩	Thread take-up lever cover	1	
29	GS551	挑線杆護罩螺釘	Screw 3/16x28 L=6	3	
30	GR3354	右線鉤	Arm thread guide Right	1	
31	GS0552	右線鉤螺釘	Screw 11/64x40 L=6	1	
32		夾線器組件	Thread tension asm.	1	
33	GL0113	夾線螺母	Tension nut	1	
34	GR1490	夾線制動板	Rotating stopper	1	
35	GW251	夾線簧	Tension spring	1	
36	GR1489	夾線板	Thread tension disk presser	1	
37	GR1488	夾線板	Thread tension disk	2	
38	G20-1-38	松線夾線器螺釘	Screw	2	
39	G20-1-39	松線夾線器墊片	Gasket	1	
40	G20-1-40	挑線簧	Spring	1	
41	G20-1-41	夾線螺釘	Screw	1	
42	GS48	夾線器螺釘	Screw 15/64x28 L=7	1	
43	G20-1-43	電磁鐵組件	Electromagnet asm.	1	
44	GM202	針板	Throat plate	1	
45	GS044	針板螺釘	Screw 11/64x40 L=6	1	
46	GS044	針板螺釘	Screw 11/64x40 L=6	1	

### 3. 機殼-外裝部件

MACHINE FRAME&MISCELLANEOUS COVER COMPONENTS

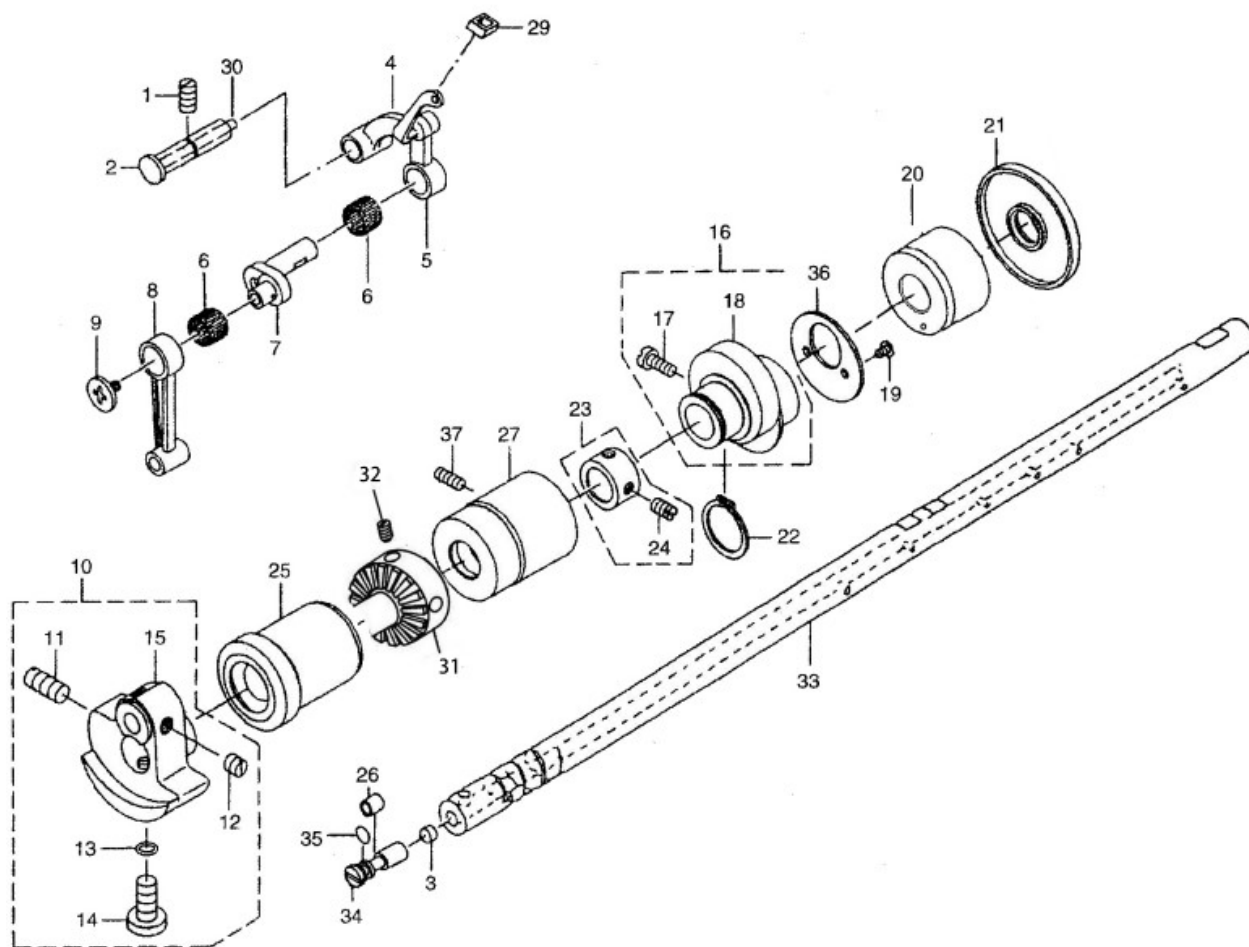


#### 4. 機殼-外裝部件 MACHINE FRAME&MISCELLANEOUS COVER COMPONENTS

序號 Ref. NO.	件 號 Part NO.	名 稱	Description	數量 Qty	備註 Note
47	GR3355	左線鉤	Arm thread guide Left	1	
48	GS0551	左線鉤螺釘	Screw 11/64x40 L=6	1	
49	GR1458	面板調節螺孔塞	Ribber plug	2	
50	GS053	面板螺釘	Screw 3/16x28 L=9	3	
51	GM340/4	推板部件	Slide plate asm.	1	
52	GM204	推板	Slide plate	1	
53	GW434	推板簧	Bed slide spring	1	
54	GS045	推板簧螺釘	Screw 3/32x56 L=2.2	2	
55	GS0548	底板支柱	Bed screw stud	4	
56	GR724	夾邊器	Ruler stopper	1	
57	GS373	夾邊器螺釘	Screw 11/64x40 L=6	2	
58					
59	G20-1-59	型號牌	Model plate	1	
60	GR9890-40	繞線器組件	Bobbin base	1	
61	GS9890-41	繞線器螺釘	Screw	3	
62	GR9890-26	割線刀	Knife	1	
63	GS226	繞線器割線刀螺釘	Knife screw	2	
64	GR9890-38	夾線器組件	Thread tension asm.	1	
65	GR9890-38-1	夾線螺母	Tension nut	1	
66	GR9890-38-2	夾線螺釘	Tension post	1	
67	GR9890-38-3	夾線彈簧	Tension spring	1	
68	GR9890-38-4	夾線板	Thread tension disk presser	2	
69	GR9890-38-5	過線板	Thread tension guide	1	
70	GR9890-38-6	夾線螺母（下）	Tension nut	1	
71	G20-1-71	電機罩殼	Motor cover	1	
72	G20-1-72	電機罩緊固螺釘	Screw	2	
73	G20-1-73	電機罩緊固螺釘	Screw	2	
74	GR9890-35	過線導線器	Thread guide plate	1	
75	G20-1-75	卡扣	Snap joint	1	

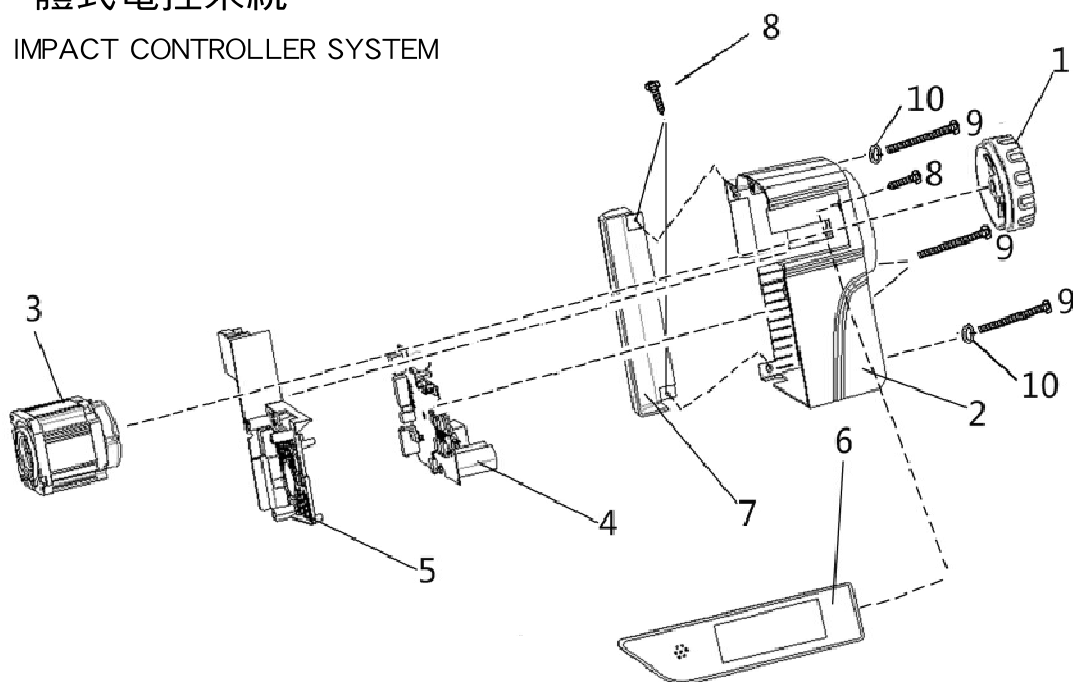
## 2. 上軸-挑線部件

MAIN SHAFT & THREAD-UP LEVER COMPONENTS



## 3. 一體式電控系統

IMPACT CONTROLLER SYSTEM



#### 4. 上軸-挑線部件 MAIN SHAFT&THREAD-UP LEVER COMPONENTS

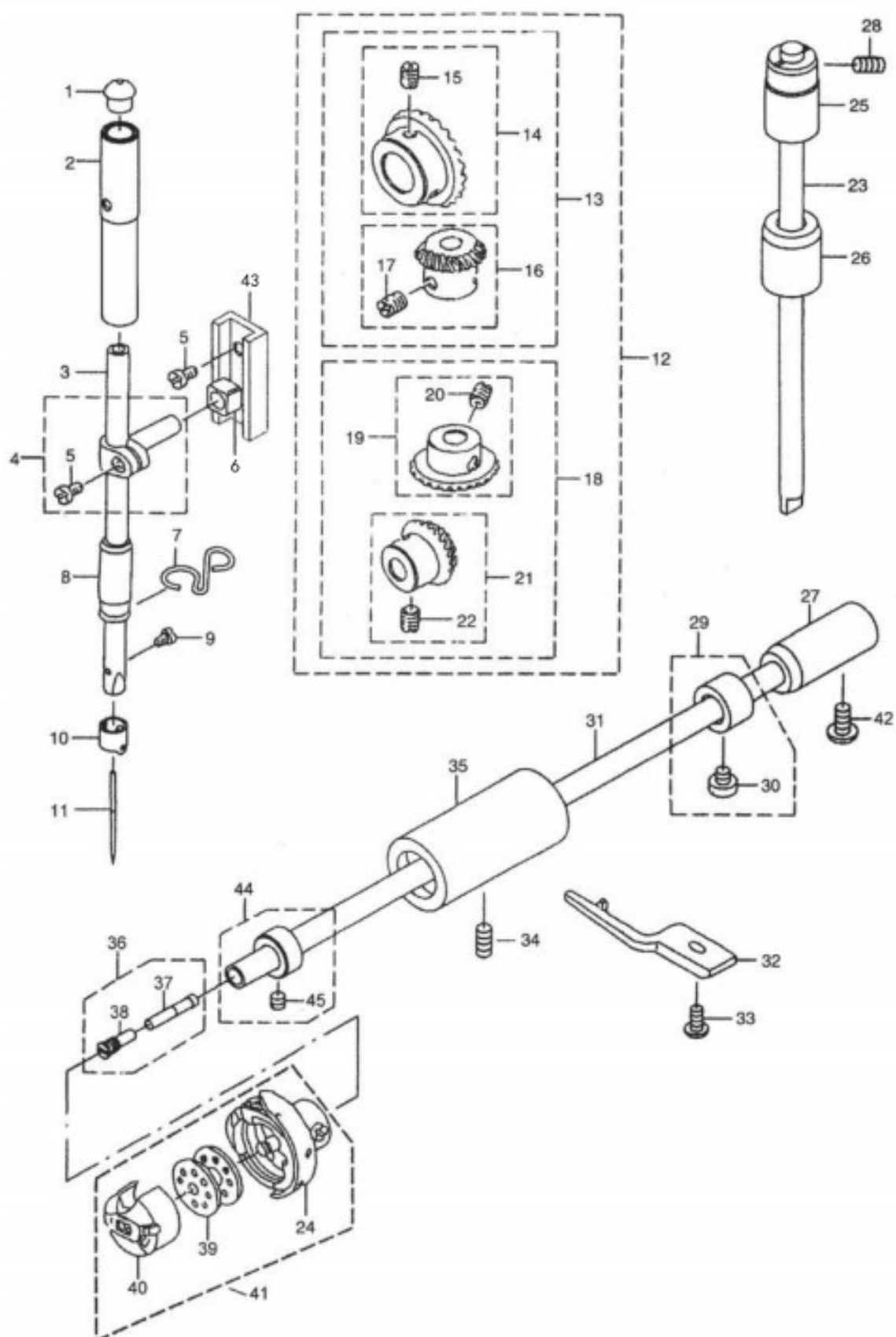
序號 Ref. NO.	件 號 Part NO.	名 稱	Description	數量 Qty	備註 Note
1	GS04	挑線連杆銷螺釘	Screw 15/64x28 L=10,5	1	
2	GX566	挑線連杆銷	Thread take-up crank shaft	1	
3	GR1470	曲柄油量限制氈	Roller felt	1	
4	GH564/4	挑線連杆	Thread take-up lever	1	
5	GH564/6	挑線連杆分組件	Thread take-up lever asm.	1	
6	GO270	挑線杆滾針軸承	Needle bearing	2	
7	GH402/2	挑線曲柄部件	Needle bar crank	1	
8	GH334	針杆連杆	Needle bar crank rod	1	
9	GS09	挑線曲柄左旋螺釘	Left screw 9/64x40 L=4.8	1	
10	GH561-8	針杆曲柄組件	Counter weight asm.	1	
11	GD0550	針杆曲柄緊固螺釘	Screw 9/32x28 L=16	1	
12	GD39	挑線曲柄定位螺釘	Screw 1/4x40 L=6	2	
13	GR1472	定位螺釘 O 型圈	Rubber ring	1	
14	GD06	針杆曲柄定位螺釘	Screw 9/32x28 L=15.5	1	
15	GH9890-65	針杆曲柄	Counter weight	1	
16		送料偏心輪組件	Feed drive eccentric cam asm.	1	
17	GD034	送料偏心輪螺釘	Screw 1/4x40 L=11	2	
18	GT198	送料偏心輪	Feed drive eccentric cam	1	
19	GD011	送料偏心輪蓋板螺釘	Screw 9/64x40 L=6	2	
20	GO462	上軸軸套	Needle bearing	1	
21	GR3346	上軸油封	Oil seal	1	
22	GR1535	抬牙連杆軸擋圈	Snap ring	1	
23	GR1469	上軸擋圈組件	Thrust collar asm.	1	
24	GS39	上軸擋圈螺釘	Screw 1/4x40 L=6	2	
25	G09890-06	上軸前軸套	Main shaft front bushing asm.	1	
26	GO296	曲柄油量調節銷膠套	Oil adjusting collar	1	
27	G09890-07	上軸中軸套	Bushing, intermediate	1	
29	GR9890-22	橡皮套	Rubber	1	
30	GR3350	挑線連杆銷毛氈	Thread take-up crank shaft felt	1	
31	G20-2-31	驅動輪	Driving wheel	1	
32	G20-2-32	驅動輪緊固螺釘	Screw	2	
33		上軸	Main shaft	1	
34		上軸油量調節銷	Oil amount adjusting pin	1	
35		上軸油量調節銷。型圈	Rubber ring	1	
36		送料偏心輪蓋板	Thrust collar	1	

#### 5. 一體式電控系統 IMPACT CONTROLLER SYSTEM

序號 Ref. NO.	件 號 Part NO.	名 稱	Description	數量 Qty	備註 Note
1	G20-3-1	手輪	Hand wheel	1	
2		皮帶罩	Belt cover	1	
3	G20-3-3	電機	Motor asm	1	
4		PCB1		1	
5		PCB2		1	
6	G20-3-6	操作面板	Operation panel	1	
7	G20-3-7	電控電線罩		1	
8	G20-3-8	自攻螺釘	Tapping screw	1	
9	G20-3-9	內六角螺釘	Socket head cap screw M5 L=35	4	
10	G20-3-10	墊片	ring	2	

#### 4. 針杆・豎軸・下軸部件

NEEDLE BAR, UPRIGHT SHAFT & HOOK DRIVING SHAFT COMPONENTS



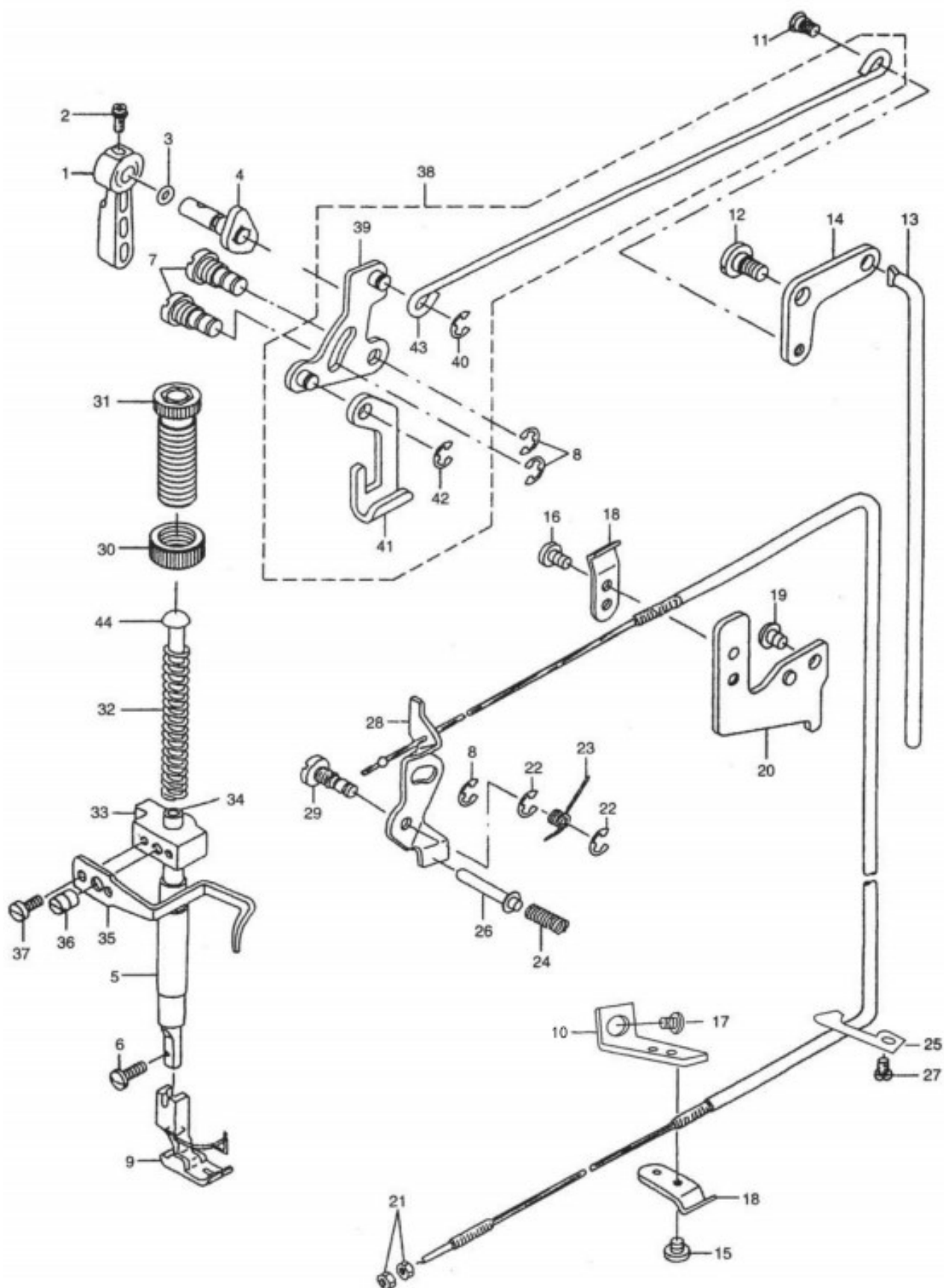


#### 4. 針杆・豎軸・下軸部件 NEEDLE BAR, UPRIGHT SHAFT&HOOK DRIVING SHAFT COMPONENTS

序號 Ref. NO.	件 號 Part NO.	名 稱	Description	數量 Qty	備註 Note
1	GR1479	針杆上孔塞	Cap	1	
2	GO9890-17	針杆上套	Needle bar bushing upper	1	
3	GZ9890-16	針杆	Needle bar	1	
4	GR1478	針杆連接柱元件	Needle rod holder asm.	1	
5	GS011	針杆連接柱螺釘	Screw 9/64x40 L=7.5	3	
6	GU168	針杆連接柱滑塊	Slide block	1	
7	GR9890-18	針杆下套線鉤	Needle bar thread guide	1	
8	GO272	針杆下套	Needle bar bushing, lower	1	
9	GS071	機針螺釘	Screw 1/8x44 L=4.8	1	
10	GR3352	針杆線鉤	Needle bar thread guide	1	
11	GV15	機針	Needle DBX1 #14	1	
12		傘齒輪組件	Gear & pinion asm.	1	
13		上齒輪組件	Gear & pinion asm., upper	1	
14	GC168	上軸傘齒輪組件	Gear asm.	1	
15	GS033	傘齒輪螺釘	Screw 1/4x40 L=8	2	
16	GC167	豎軸上傘齒輪組件	Pinion asm.	1	
17	GS033	傘齒輪螺釘	Screw 1/4x40 L=8	2	
18		下齒輪組件	Gear&pinion asm., lower	1	
19	GC166	豎軸下齒輪組件	Gear asm.	1	
20	GS033	傘齒輪螺釘	Screw 1/4x40 L=8	2	
21	GC165	下軸傘齒輪組件	Pinion asm.	1	
22	GS033	傘齒輪螺釘	Screw 1/4x40 L=8	2	
23	GZ435	豎軸	Upright shaft	1	
24	GN161	旋梭	Hook asm.	1	
25	GO472	豎軸上軸套	Upright shaft bushing, upper	1	
26	GO471	豎軸下軸套	Upright shaft bushing, lower	1	
27	GO470	下軸後軸套	Bushing rear	1	
28	GS053	豎軸上套緊固螺釘	Screw 3/16x28 L=7	1	
29	GR1519-8	下軸擋圈組件	Thrust collar asm.	1	
30	GS082-8	下軸擋圈螺釘	Screw 11/64x40 L=5	2	
31	GZ434-8	下軸	Lower shaft	1	
32	GR3371	旋梭定位鉤	Bobbin case holder	1	
33	GS030-8	旋梭定位鉤螺釘	Screw 11/64x40 L=9.5	1	
34	GS0559	下軸前軸套螺釘	Screw 3/16x28 L=7	1	
35	GO1002	下軸前軸套	Lower shaft front metal	1	
36		下軸限油組件	Oil seal screw asm.	1	
37	GR1515	下軸限油芯	Oil wick	1	
38	GS031	下軸限油螺釘	Oil seal screw	1	
39	GN163	梭心	Bobbin	1	
40	GN162	梭殼	Bobbin case	1	
41	GN161	旋梭梭殼組件	Hook bobbin case asm.	1	
42	GO053	下軸後軸套螺釘	Screw 3/16x28 L=13	1	
43	GR0341	針杆連接柱滑塊座	Slide block base	1	
44	GR3372-7	下軸擋油圈組件	Lower shaft oil deflector asm	1	
45	GS210	擋油圈螺釘	Oil deflector screw 11/64 x 40 L=3.5	2	

## 5. 壓杆部件

### HAND LIFTER COMPONENTS

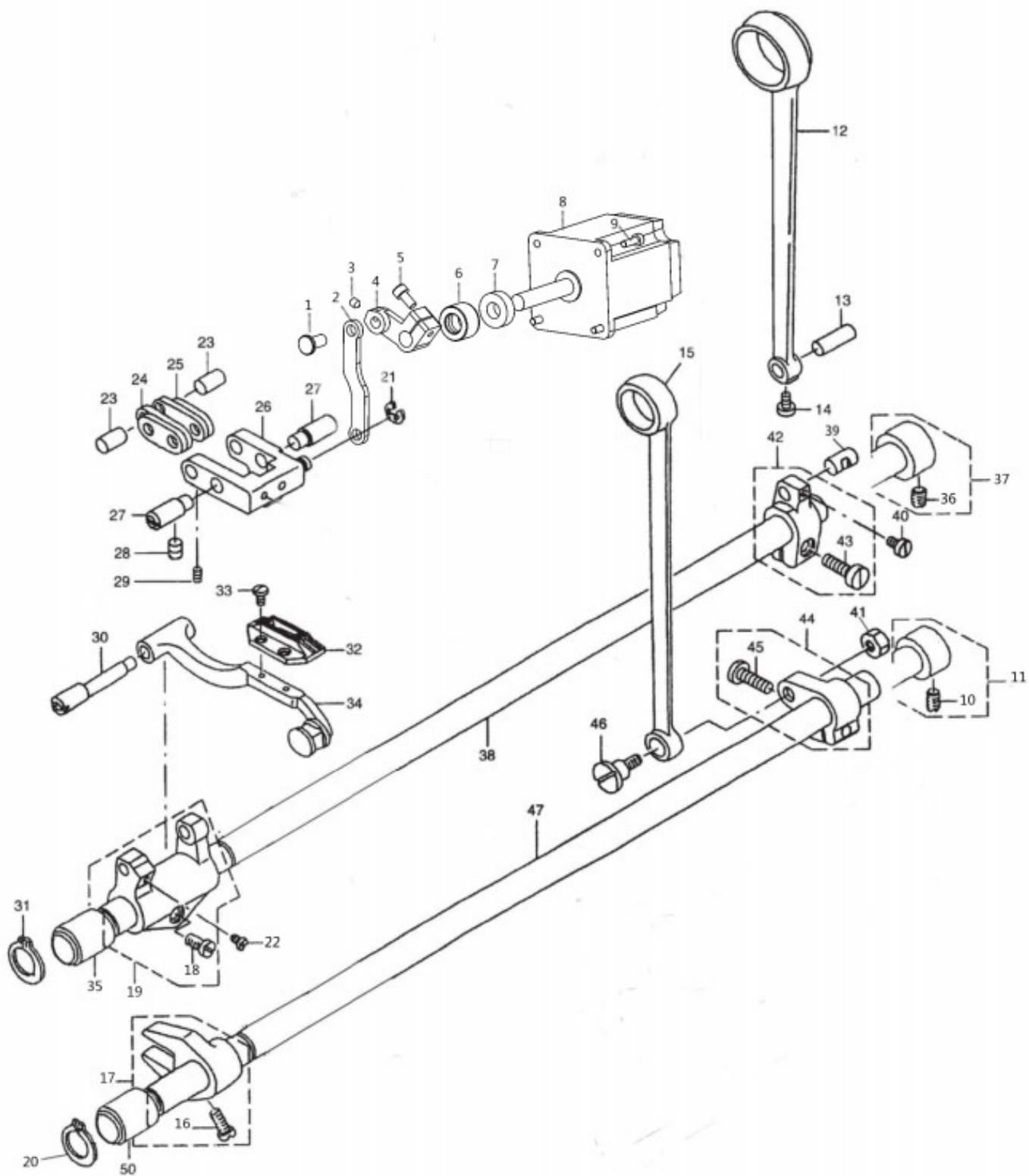


## 5. 壓杆部件 HAND LIFTER COMPONENTS

序號 Ref. NO.	件 號 Part NO.	名 稱	Description	數量 Qty	備註 Note
1	GR3360	壓腳扳手	Hand lifter	1	
2	GS0554	壓腳扳手螺釘	Screw 9/64x40 L=10	1	
3	GR1503	壓腳扳手軸 O 型圈	Rubber ring	1	
4	GR336/2	壓腳扳手凸輪部件	Hand lifter cam asm.	1	
5	GO273	壓杆軸套	Presser bar bushing lower	1	
6	GS020	活壓腳螺釘	Screw 9/64x40 L=8	1	
7	GS0555	前杠杆螺紋銷	Link shaft	2	
8	GR1510	螺紋銷開口擋圈	E-ring 5	3	
9	GM200/5	活壓腳部件	Presser foot asm.	1	
10		下壓線底板	Wire holder bracket, lower	1	
11	GS0558	抬壓腳拉杆螺釘	Hinge screw	1	
12	GS0557	後杠杆軸拉螺釘	Hinge screw	1	
13	GR3370	抬壓腳頂杆	Knee lifter connecting rod	1	
14	GR3369	抬壓腳後杠杆	Lifting lever link	1	
15	GS010	下壓板緊固螺釘	Screw 11/64x40 L=5	1	
16	GS336-8	上壓板緊固螺釘	Screw 11/64x40 L=5	1	
17		下壓板組件緊固螺釘	Screw 15/64x28 L=14.5	1	
18	GR1017-8	拉線活壓板	Wire holder	2	
19	GS310-8	上壓板組件緊固螺釘	Screw 3/16x28 L=6	1	
20	GR1016-8	上壓線底板	Wire holder bracket, upper	1	
21	GL6	拉線鈕距調節螺母	Nut 3/16x32	2	
22	GR1510	螺紋銷開口擋圈	E-ring 5	2	
23	GW433	松線頂板復位簧	Tension release return spring	1	
24	GW432	松線輔釘彈簧	Thread release pin spring	1	
25		軟管右擋板	Wire cable holder	1	
26	GX568	松線輔釘	Tension release supporting pin	1	
27		右擋板緊固螺釘	Screw 3/16x28 L=6	1	
28	GR9890-50	松線頂板	Thread tension release wire	1	
29	GS0556	松線頂板螺紋銷	Tension release shaft	1	
30	GL0114	調壓螺母	Presser adjusting screw nut	1	
31	GS0553-8	調壓螺釘	Presser spring regulator	1	
32	GW253	調壓簧	Presser adjusting spring	1	
33	GR3358-8	壓杆導架	Presser bar guide bracket	1	
34	GZ275	壓杆	Presser bar	1	
35	GR9890-56	緩線調節鉤	Presser bar thread guide	1	
36	GS033	壓杆導架螺釘	Screw 1/4x40 L=8	1	
37	GS0100	緩線調節鉤螺釘	Screw 9/64x40 L=8	2	
38		前杠杆組件	Knee lifting cross rod asm	1	
39	GR3364/3	抬壓腳前杠杆部件	Hand lifter link	1	
40	GR1510	拉杆開口擋圈	E-ring 5	1	
41	GR3363	壓腳升降板	Lifting lever	1	
42	GR3366	升降板連接開口擋圈	E-ring 5	1	
43	GR3368	抬壓腳拉杆	Knee lifting cross rod	1	
44	GR1494	調壓導杆	Presser guide bar	1	

## 6. 送料部件

### FEED MECHANISM COMPONENTS

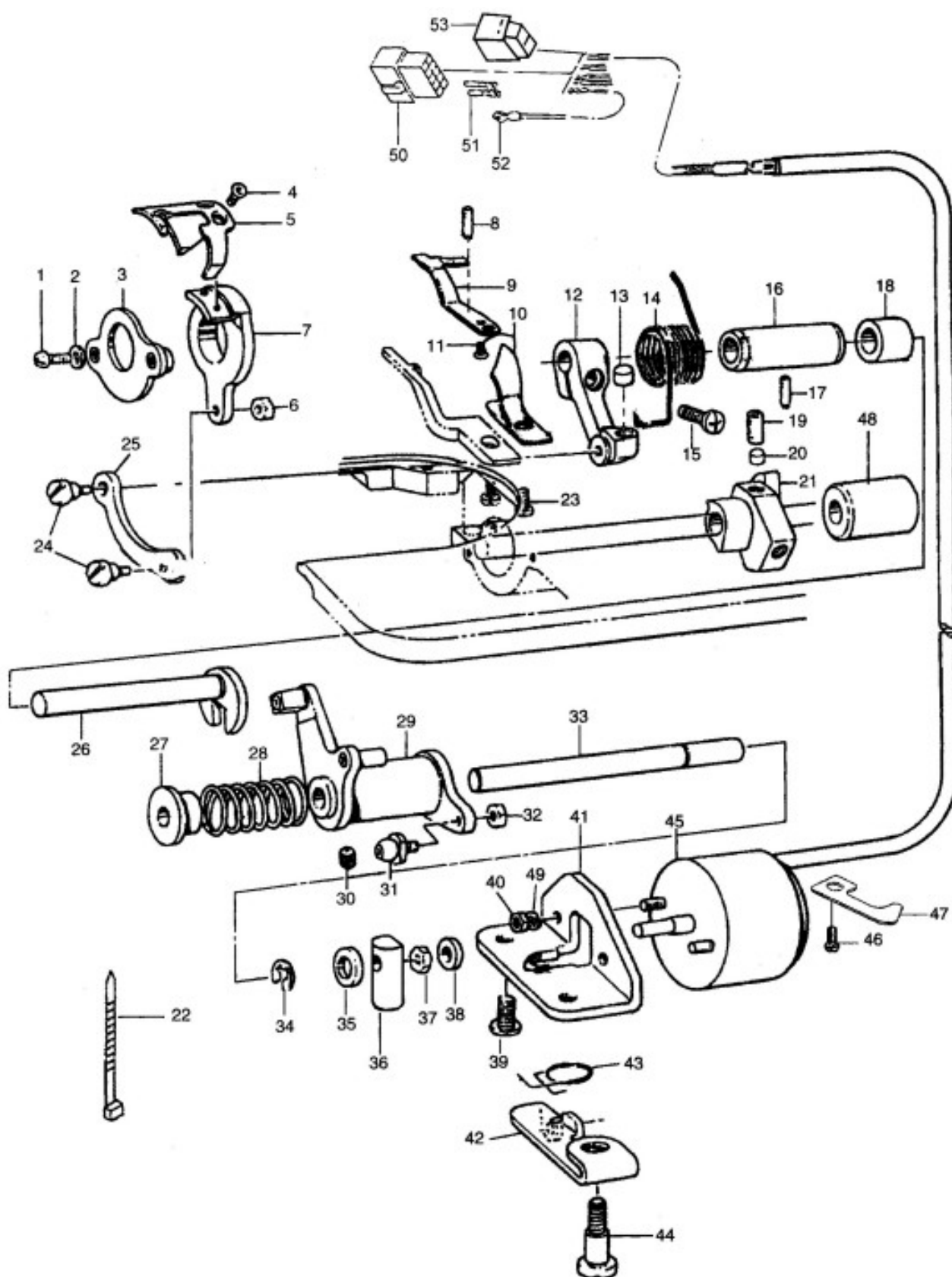


## 6. 送料部件 FEED MECHANISM COMPONENTS

序號 Ref. NO.	件 號 Part NO.	名 稱	Description	數量 Qty	備註 Note
1	G18E-080110	單步進連杆銷	Single step connecting rod pin	1	
2	G18E-080120	單步進連杆	Single step linkage	1	
3	G18E-M5X6	單步進連杆螺釘	Single step coupling screw	1	
4	G18E-080100	單步進倒縫曲柄	Single step reverse slotted crank	1	
5	G18E-M5X16	倒順縫曲柄螺釘	Reverse slotted crank screw	1	
6	G18E-010130	倒送料軸軸套	Reverse feed shaft sleeve	1	
7	G18E-010140	倒送料軸油封	Inverted feed shaft oil seal	1	
8	G18E-30101350	倒送料步進電機	Reverse feed stepper motor	1	
9	G18E-M5X16	步進電機螺釘	Step motor screw	4	
10	GS39	抬牙軸擋圈螺釘	Screw 1/4x40 L=6	1	
11	GR1469	抬牙軸擋圈	Thrust collar asm.	1	
12	GH568	送料連杆	Rocker shaft connecting rod	1	
13	GX570	送料連杆銷	Walking foot long pin	1	
14	GSO560	送料連杆螺釘	Screw 9/64x40 L=4	1	
15	GH572	抬牙連杆	Connecting rod	1	
16	GS037	抬牙叉曲柄螺釘	Retaining ring	1	
17	GH570	抬牙叉曲柄組件	Feed bar crank asm.	1	
18	GS69	牙架座螺釘	Screw 3/16x28 L= 14	1	
19	GR3379-8	牙架座組件	Driving shaft crank asm.	1	
20	GR1524	抬牙軸軸用擋圈	Screw 11/64x40 L=10.5	1	
21	GR1510	倒送料連杆擋圈	E-ring 5	1	
22	GS092	牙架銷螺釘	Screw 11/64x40 L=7	2	
23	GX571	短擺動板連接銷	Walking foot short pin	2	
24	GR3374	送料長擺動板	Connecting link long pin	2	
25	GR3775	送料短擺動板	Connecting link short pin	2	
26	GR3376/2-8	送料擺動板座組件	Feed adjust link asm.	1	
27	GX573	送料擺動板座左右銷	Adjusting link fulcrum shaft	2	
28	GS48	左右銷螺釘	Screw 15/64x28 L=7	2	
29	GSO560	連杆銷螺釘	Screw 9/64x40 L=4	2	
30	GX575	牙架銷	Feed bar shaft	1	
31	GR1524	送料軸軸用擋圈	Retaining ring	1	
32	GM201	送料牙	Feed dog I	1	
33	GS072	送料牙螺釘	Screw 1/8x44 L=6	2	
34	GR3380/5-8	牙架部件	Feed bar asm.	1	
35	GR1469	送料軸前軸套	Feed rocker shaft bushing	2	
36	GS39	送料軸擋圈螺釘	Screw 1/4x40 L=6	1	
37	GO473	抬牙軸擋圈組件	Thrust collar asm.	1	
38	GZ436	送料軸	Feed rocker shaft	1	
39	GX571	送料曲柄銷	Walking foot middle pin	1	
40	GSO560	曲柄銷螺釘	Screw 9/64x40 L=6	1	
41	GL7	抬牙連杆軸位螺母	Nut 9/32x28	1	
42	GH569	送料曲柄組件	Feed rocker shall crank asm.	1	
43	GS0561	送料曲柄螺釘	Screw 3/16x28 L=15.5	1	
44	GH571	抬牙後曲柄組件	Lining rocker asm.	1	
45	GS0561	抬牙後曲柄螺釘	Screw 3/16x28 L=14	1	
46	GS0562	抬牙連杆軸位螺釘	Hinge screw	1	
47	GZ437	抬牙軸	Feed driving shaft	1	

## 7. 自動切線部件

### THREAD TRIMMER COMPONENTS

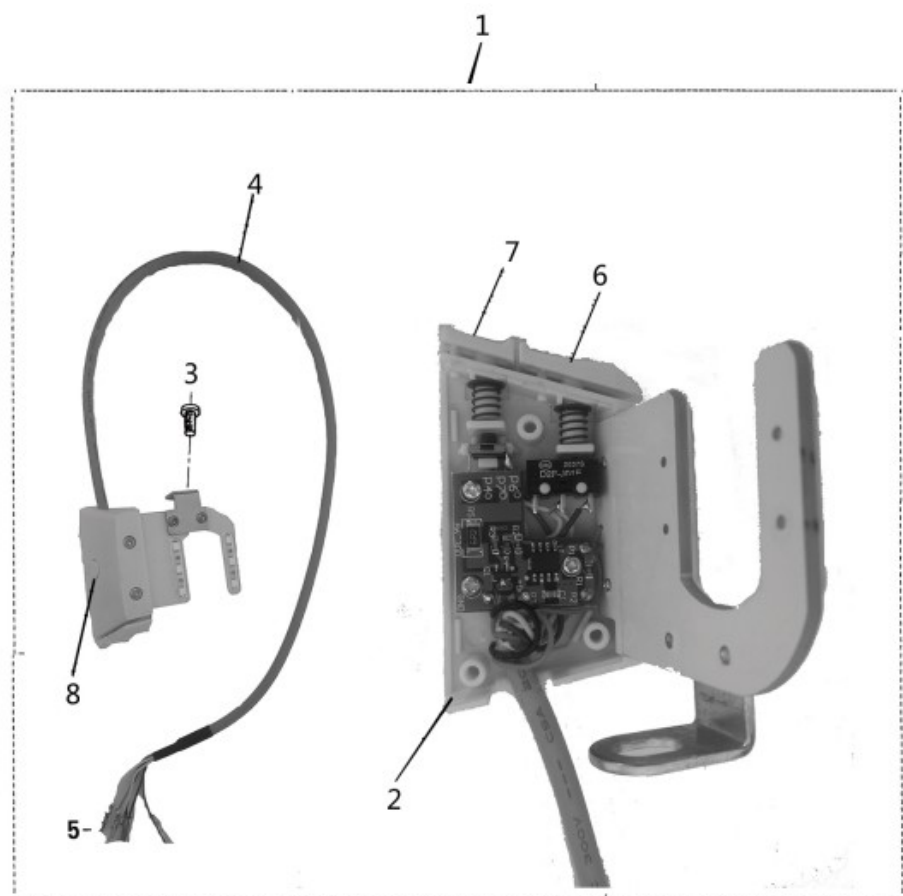


## 7. 自動切線部件 THREAD TRIMMER COMPONENTS

序號 Ref. NO.	件 號 Part NO.	名 稱	Description	數量 Qty	備註 Note
1	GS832	螺釘 SMII/64"x40 L=12	Screw SMI 1/64x40 L=12	2	
2	GR7662	牙架座螺釘墊圈	Washer	2	
3	GR7661	刀架壓板組件	Partiality shank asm.	1	
4	GS175	活動刀固定螺釘	Screw	2	
5	GR7663	活動刀	Motorial knife	1	
6	GL650	螺母 SMII/64"x40	Nut SMI 1/64x40	1	
7	GR7660	剪線刀架	Knife bracket	1	
8	GS9890-27	定刀調節螺釘	Screw	1	
9	GR7656	割線刀	Secant knife	1	
10	GR7658	護針片	Protect needle patch	1	
11	GS1755	螺釘 SM9/64"x40 L=4	Screw SM9/64x40 L=4	1	
12	GH1001	曲柄	Thread shear rock arm	1	
13	GR7664	驅動曲柄止動塊	Positioning block	1	
14	GW951	彈簧	Spring	1	
15	GS1760	螺釘 SM3/16"x32 L=14	Screw SM3/16x32 L=14	2	
16	G01001	切線軸套	Thread shear cam rock arm assy	1	
17	GS1761	螺釘 SMII/64"x40	Screw SMI 1/64x40	1	
18	G01000	驅動曲柄軸襯套	Short bush	1	
19	GS1754	螺釘 SMI/4"x40L=10	Screw SM 1/4x40 L= 10	1	
20		凸輪頂柱	Pole	2	
21	GR7656	凸輪	Thread shear cam	1	
22		尼龍紮帶	Bale band	1	
23	GS788	螺釘 SM9/64"x40 L=5	Screw SM9/64x40 L=5	1	
24	GS1759	連杆螺釘 SMII/64"x40L=5.5	Screw SMI 1/64x40 L=5.5	2	
25	GH1000	連杆	Knife shaft connecting rod	1	
26	GZ850	切線凸輪曲柄軸	Thread shear rock arm shaft	1	
27	GR7667	扭簧端蓋	Spring cover	1	
28	GW952	彈簧	Spring	1	
29	GR7665	剪線驅動組件	Thread shear rock arm shaft	1	
30	GS189	螺釘 SMII/64"x40	Screw SM 11 /64x40	1	
31	G7666	滾柱	Roll shaft assy	1	
32	GL650	螺母	Nut	1	
33	GZ851	軸	Thread shear shaft	1	
34	GR7669	擋圈	Retaining ring	1	
35	GR7668	電磁鐵緩衝墊	Magnetic plug cushion mat	1	
36	GR7672	切線電磁鐵頂銷	Magnetic plug pin	1	
37	GL652	螺母 SMI/4"x40	Nut SM 1/4x40	1	
38	GR7671	墊圈	Washer	1	
39	GS1763	油泵安裝螺釘	Screw	1	
40	GKL201-8	螺母 M4	Nut M4	2	
41	GR7670	切線磁鐵支架	Magnetic plug cushion mat	1	
42	GR7677	松線座	Thread loose seat	1	
43	GWS953	彈簧	Spring	1	
44	GS1764	螺釘 SMI/4"x28L=13	Screw SMI/4x28 L=13	1	
45	GQ785	剪線電磁鐵組件	Magnetic plug	1	
46	GR3400-7	螺釘 SM15/64"x28 L=14.5	Screw SMI5/64x28 L=14.5	1	
47	GS525-8	旋梭供油管壓板	Electrical plug breacker washer	1	
48	GO 1003	下軸中套	Bushing,lower shaft	1	
49	GKR202	墊圈 4.5x8x0.5	Washer 4.5x8x0.5	2	
50	GR8800-61	14 孔接線器	14 holes thread connector	1	
51	GR9890-78	接線端子	Connecting terminal	1	
52	GR8800-60	地線接頭	Groundwire terminel	1	
53	GR9890-70	LED 燈接線器	LED light' s wire connector	1	

## 8. 自動倒縫部件

### AUTOMATIC REVERSE FEED COMPONENTS



## 8. 自動倒縫部件

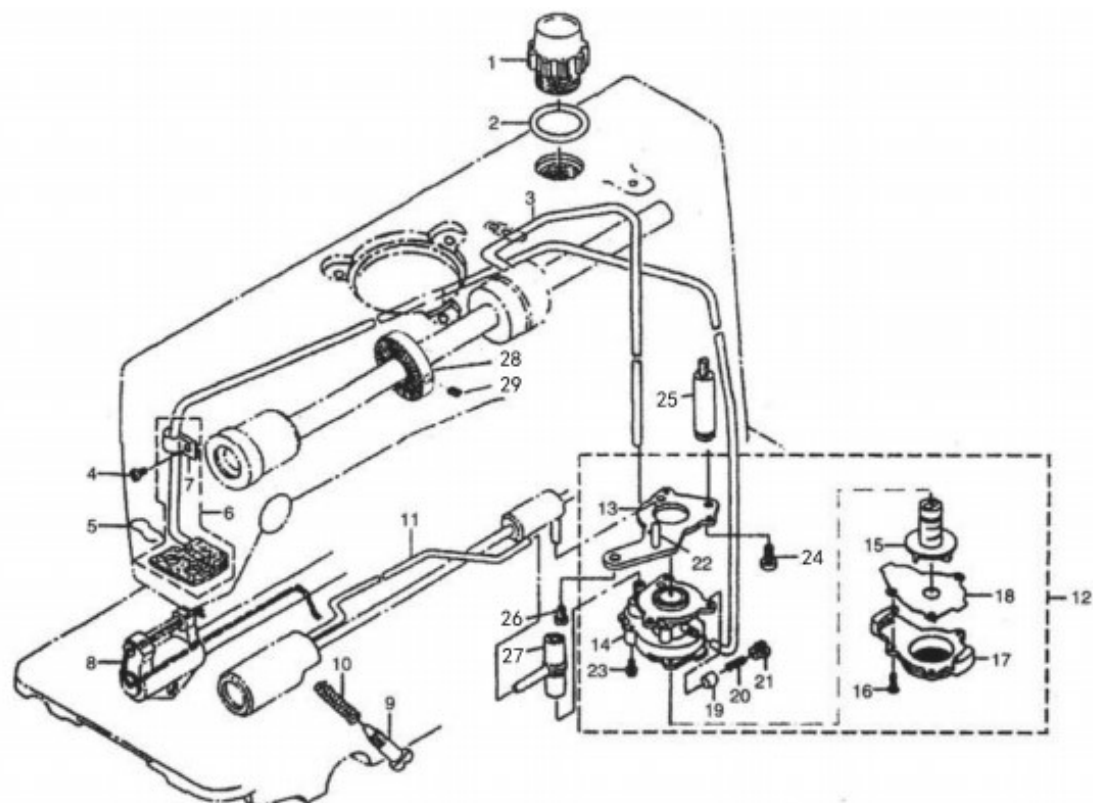
### AUTOMATIC REVERSE FEED COMPONENTS

序號 Ref. NO.	件 號 Part NO.	名 稱	Description	數量 Qty	備註 Note
1	G20-8-1	開關元件	Switch block	1	
2	G20-8-2	開關罩殼	Switch cover	1	
3	G20-8-3	螺釘	Screw 3/16 x 28 L=9	1	
4	G20-8-4	電線	Wire	1	
5	G20-8-5	接線端子	Connecting terinal	1	
6	G20-8-6	倒縫按鈕	Reverse feed button	1	
7	G20-8-7	補針按鈕	Mending needle button	1	
8	G20-8-8	LED 燈按鈕	LED light button	1	



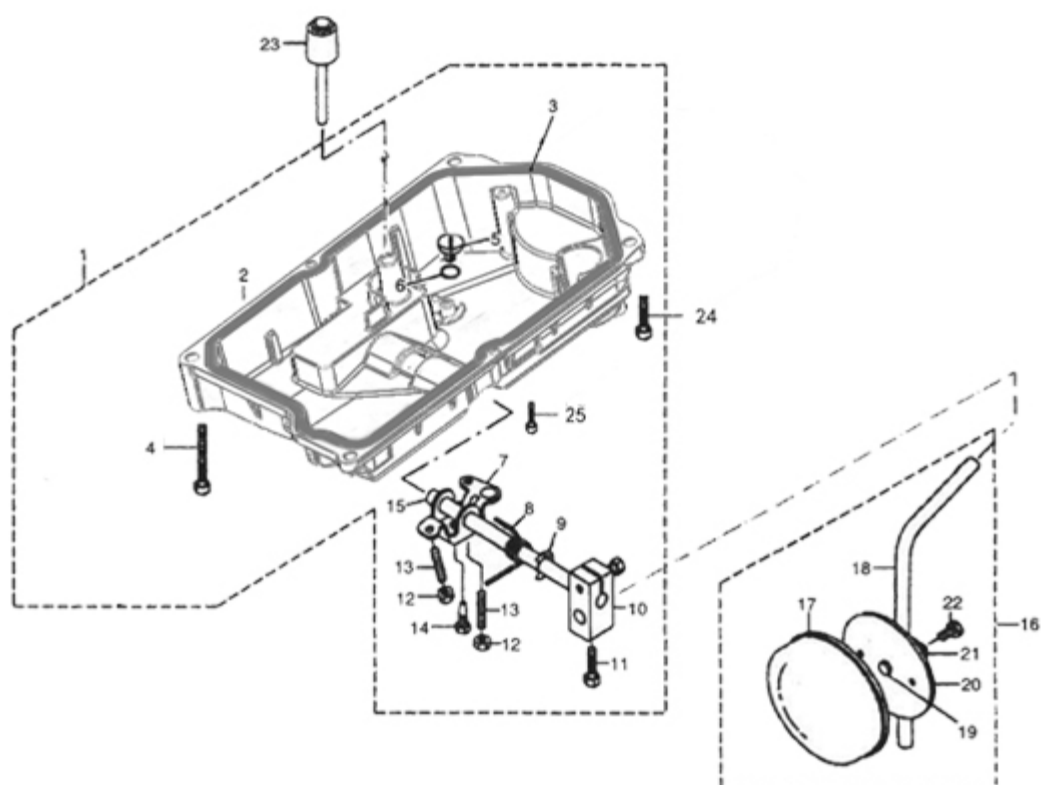
## 9. 潤滑部件

### OIL LUBRICATION COMPONENTS



## 10. 油盤部件

### OIL RESERVOIR COMPONENTS



## 9. 潤滑部件 OIL LUBRICATION COMPONENTS

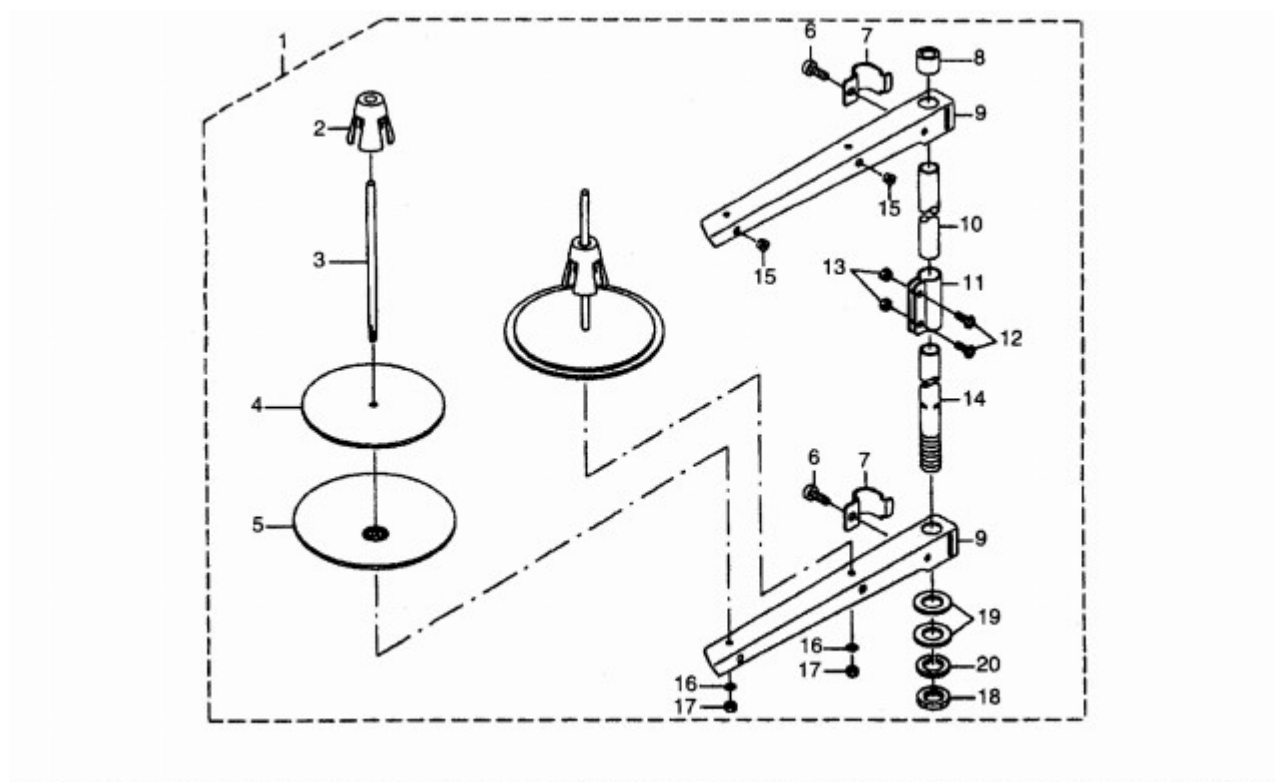
序號 Ref. NO.	件 號 Part NO.	名 稱	Description	數量 Qty	備註 Note
1	GR1561-8	油窗	Oil sight window	1	
2	GR1562	油窗 O 型圈	Rubber ring	1	
3	GR3398	上軸供油管	Main shaft oil tube	1	
4	GR0551	回油管夾螺釘	Screw 3/16x28 L=6	1	
5	GR1569	回油氈夾	Oil felt presser	1	
6	GR3401	回油管組件	Oil return tube asm	1	
7	GR1566	回油管夾	Holder	1	
8	GR3378	送料軸油線	Oil wick	1	
9	GS054-8	旋梭油量調節螺釘	Oil adjusting screw	1	
10	GW259-8	旋梭油量調節簧	Spring	1	
11	GR3399-8	旋梭供油管	Oil tube	1	
12	GR3389/12	油泵部件	Lubricating oil pump asm	1	
13	GR3390	油泵安裝板	Oil pump installing base	1	
14	GR3391	油泵體	Oil pump	1	
15	GR3392	油泵葉輪	Oil pump impeller	1	
16	GS554	油泵蓋螺釘	Screw D=3 L=10	3	
17	GR3394	油泵蓋	Lubricating oil pump cover	1	
18	GR3393	油泵葉輪托板	Oil pump impeller cover	1	
19	GR3396	回油柱塞	Plunger	1	
20	GW437	柱塞簧	Plunger spring	1	
21	GS0569	柱塞螺釘	Plunger screw	1	
22	GR3395	下軸供油管	Hook driving shaft oil tube	1	
23	GS0568	油泵安裝螺釘	Screw M3 L=8	3	
24	GS030	螺柱連接螺釘	Screw 11/64x40 L=9.5	1	
25	GS0567-8	油泵連接螺柱	Oil pump support, large	1	
26	GS062	油泵螺釘	Screw 15/64x28 L=12	1	
27	GR3397	供油管接頭	Rubber joint	1	
28	GS9890. 39	繞線器驅動輪	Bobbin pulley	1	
29	GS1761	繞線器驅動輪螺釘	Screw	2	

## 10. 油盤部件 OIL RESERVOIR COMPONENTS

序號 Ref. NO.	件 號 Part NO.	名 稱	Description	數量 Qty	備註 Note
1	GR3405/17	油盤部件	Oil reservoir asm	1	
2	GR3406	油盤	Oil reservoir	1	
3	GR3407	油盤墊	Oil reservoir gasket	1	
4		油盤螺釘	Screw M6 L=40	2	
5	GS0571	排油孔螺釘	Screw 5/16x24 L=7	1	
6	GR3409	排油孔螺釘 O 型圈	Rubber ring	1	
7	GH576	抬壓腳雙向曲柄	Knee lifting rotating arm	1	
8	GW438	雙向曲柄扭簧	Spring	1	
9	GR1583	抬壓腳軸開口擋圈	E-ring 10	1	
10	GR3410	抬壓腳操縱杆節頭	Vertical shaft fitting arm	1	
11	GS0573	操縱杆節頭螺釘	Screw	2	
12	GL21	雙向曲柄限位調節螺母	Nut M6	2	
13	GS057	雙向曲柄限位調節螺釘	Screw M6 L=30	2	
14	GS0572	雙向曲柄螺釘	Screw M6 L=17.5	1	
15	GZ439	抬壓腳軸	Knee press cross shaft	1	
16	GR3411/6	操縱杆部件	Knee pan plate asm	1	
17	GKR13	操縱杆軟墊	Knee pan plate cover	1	
18	GR1586	操縱杆	Knee pan upright shaft	1	
19	GR3413	操縱杆墊	Knee pan plate rubber	1	
20	GR3412	操縱板	Knee pan plate	1	
21	GR3414	操縱杆節頭	Knee pan plate support	1	
22	GS584	節頭螺釘	Screw M6 L=12	1	
23	GH579	抬壓腳頂銷	Knee lifter push rod	1	
24		油盤螺釘	Screw M6 L=16	2	
25		油盤螺釘	Screw M4 L=12	2	

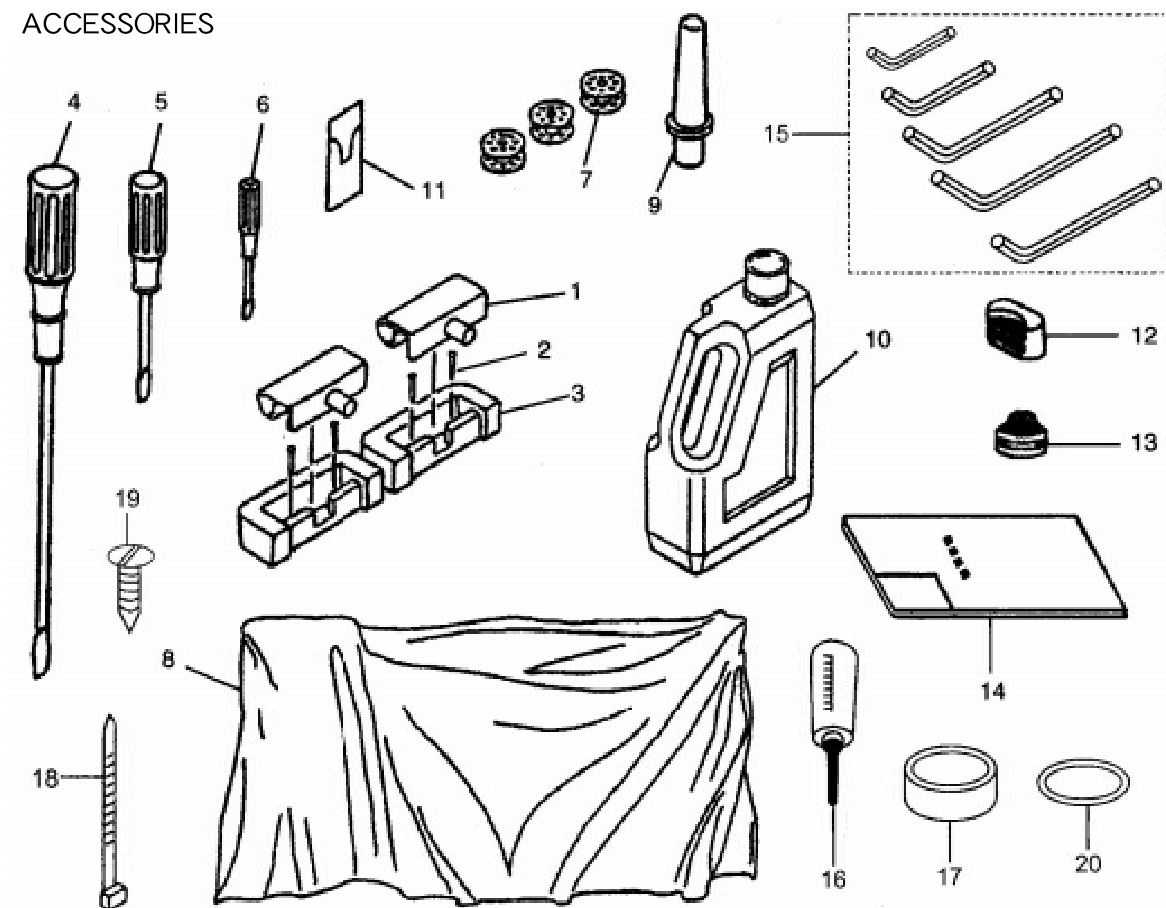
## 11. 過線架部件

### THREAD STAND COMPONENTS



## 12. 附件

### ACCESSORIES



## 11. 過線架部件 THREAD STAND COMPONENTS

序號 Ref. NO.	件 號 Part NO.	名 稱	Description	數量 Qty	備註 Note
1		過線架部件	Thread stand asm.	1	
2	GR1215	線團防送墊	Spool retainer	2	
3	GS067	線盤釘	Spool pin	2	
4	GR750	線盤輪墊	Spool rest cushion	2	
5	GR1811	線盤	Spool rest	2	
6	GS558	線架過線夾螺釘	Screw M6 L=16	2	
7	GR1745	線架過線夾	Thread guide arm joint	2	
8	GR1744	線架杆頂防護橡皮	Spool rest rod rubber cap	1	
9	GR1825	線架過線杆	Spool rest arm	2	
10	GZ316-8	線架杆上節	Spool rest rod, upper	1	
11	GR1932	線架杆接頭	Spool rest rod joint	1	
12	GS401	線架杆接頭螺釘	Screw M5 L=14	2	
13	GL158	線架杆接頭螺母	Nut M5	2	
14	GZ315-8	線架杆下節	Spool rest rod, lower	1	
15	GR1748	過線圈	Thread guide	2	
16	GR1625	線盤釘彈簧墊	Spring washer	2	
17	GL23	線盤釘螺母	Nut M5	2	
18	GL158	線架杆緊固螺母	Nut M16x 1.5	1	
19	GR1696	線架杆緊固螺母墊圈	Washer 16 x 30 x 2.6	2	
20	GR1751	緊固螺母彈簧的墊圈	Spring washer	1	

## 12. 附件 ACCESSORIES

序號 Ref. NO.	件 號 Part NO.	名 稱	Description	數量 Qty	備註 Note
1	GR1590/2	機頭連接鉤元件	Machine hinge plate asm.	2	
2	GK241	機頭連接鉤座釘	Nail	4	
3	GBX105	機頭連接鉤座	Machine hinge plate	2	
4	GR1610	螺絲刀（大）	Screw driver, large	1	
5	GR1602	螺絲刀（中）	Screw driver, medium	1	
6	GR1603	螺絲刀（小）	Screw driver, small	1	
7	GN163-8	梭心	Bobbin	3	
8	GF424	機頭罩	Macgube head cover	1	
9	GBR148	機頭支柱	Macgube rest cover	1	
10	GR1604/3	油箱部件	Oil reservoir asm.	1	
11	GV15	機針	Needle DB x 1 #14-#16	1 包	
12	GR1578-8	防震墊（A）	Quakeproof washer A	1	
13	GR1579-8	防震墊（B）	Quakeproof washer B	1	
14		說明書	Instruction book	1	
15		內六角扳手(1.5,2,2.5,3,4)	Cross screw driver (1.5,2,2.5,3,4)	各 1	
16		小油壺	Oiler asm	1	
17	GR1576	油盤磁鐵	Oil reservoir magnet	1	
18		尼龍紮帶	Cable band	5	
19	GBR147	木螺釘	Wood screw	4	
20	GS0574	墊圈	Washer	4	

This diagram shows an exploded view of a mechanical assembly. The central component is a rectangular block (4) with a vertical rod (6) passing through its center. A nut (7) and a washer (8) are shown on the rod above the block. To the left, a bracket (3) is shown with two screws (2) and a separate set of two screws (1). To the right, a long horizontal arm (13) is shown with a pivot point (5) and a cable or rod attached. Various other components are labeled with numbers 9, 10, 11, and 12, including what appear to be bushings, washers, and a cylindrical component.

序號 Ref. NO.	件 號 Part NO.	名 稱	Description	數量 Qty	備註 Note
1		六角螺釘 M5	Bolt M5	4	
2		十字螺釘	Screw 3/16x28 L=9	4	
3	5-45	抬壓腳電磁鐵支撐架左	Left carriage	1	
4	5-47	抬壓腳電磁鐵	Foot lift electromagnet	1	
5	5-46	抬壓腳電磁鐵支撐架右	Right carriage	1	
6		緩衝墊	Rubber cushion	1	
7		六角螺母 M8	Nut M8	1	
8	5-14-4	頂柱	Top column	1	
9		C 型卡簧 C5	Retaining ring external	2	
10		墊圈	Washer	2	
11	5-14-2	尼龍滾柱銷	Nylon roller pin	1	
12	5-14-3	尼龍滾柱	Nylon rollers	1	
13	5-14-1	自動抬壓腳後杠杆	Auto foot lift after lever	1	



高林股份有限公司  
KAULIN MFG. CO., LTD.

由於對產品的改良及更新，本產品零件圖及外觀的修改恕不事先通知！  
The specification and/or appearances of the equipment described in this parts list are  
subject to change because of modification which will without previous notice.  
HBL-13W13.APR.2024