

SIRUBA

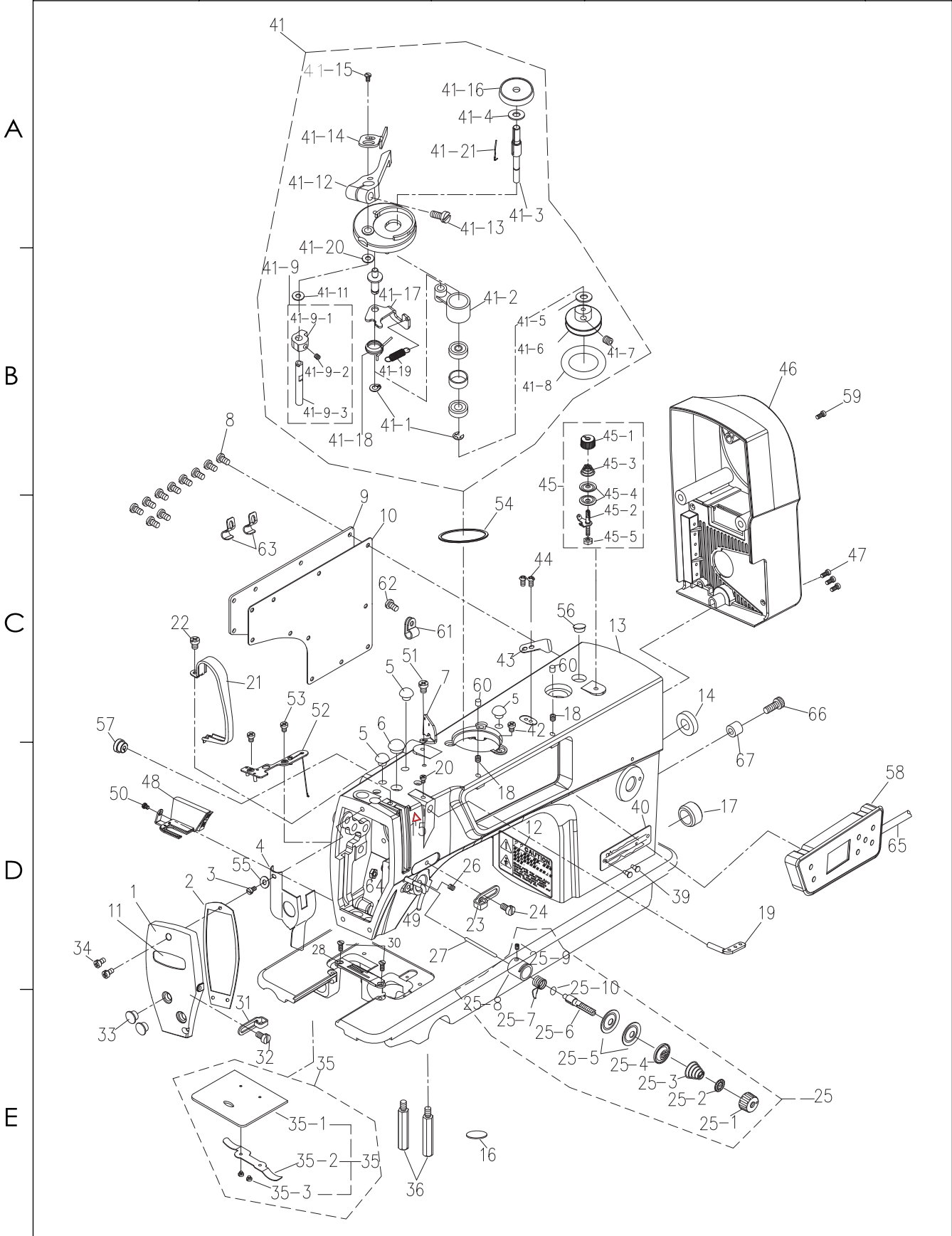
零件圖

PARTS LIST

DL720-RM1



SIRUBA PARTS LIST	Series	Parts Group	Subclass Remark	Page
	DL720-RM1	01		1 / 1
				Date
				2023/03/14



SiRUBA SEQUENCE LIST		Series	Parts Group	Subclass Remark	Page
		DL720-RM1	01		1 / 2
					Date
					2023/03/14
序號	新圖號	名 稱	Name of parts	數量	備註
A	1	180001001S	面板	Face plate	1
	2	180001002	面板墊	Face plate agsket	1
	3	S073184404	防油板螺釘	Screw 1/8×44 L=4	1
	4	991001004	面部防油板	Arm oil shifld	1
	5	991001005	橡膠塞	Rubber plug	3
	6	991001006	針杆曲柄螺孔塞	Rubber plug	1
	7	991001007	三眼過線板	Thread guide rod	1
	8	S094762809	後窗板螺釘	Screw 3/16×28 L=9	12
	9	280001009	後窗板	Side plate	1
	10	280001010	後窗板墊	Gasker	1
B	11	180001011	面板商標牌	Face plate	1
	12	991001012	安全指示牌	Safety lable	1
	13	183001015-1	機殼	Machine cover	1
	14	991001014	送料調節器孔塞	Rubber plug	1
	15	280001070	安全標示	Safety marking	1
	16	280001074	檢驗標示	Inspection sign	1
	17	991001017	下軸盲孔塞	Rubber plug	1
	18	S144374006	螺釘 SM11/64"x40 L=6	Screw SM11/64"x40 L=7	2
	19	180001019	三眼線勾	Thread tension asm	1
	20	S114372806	小夾線組件支架螺釘	Screw 11/64×40 L=6	1
C	21	991001021S	挑線防護罩	Thread take-up lever cover	1
	22	S094762806	挑線防護罩螺釘	Screw 3/16×28 L=6	1
	23	991001023	右線鉤	Arm thread guide right	1
	24	S074374006	右線鉤螺釘	Screw 11/64×40 L=6	1
	25	720001012C	夾線器組件	Thread tension asm	1
	25-1	720001025-1	夾線螺母	Tension nut	1
	25-2	991001025-2	夾線止動板	Rotating stopper	1
	25-3	991001025-3	夾線簧	Rotating stopper	1
	25-4	991001025-4	夾線壓板	Thread tension disk presser	1
	25-5	991001025-5	夾線板	Thread tension disk	2
D	25-6	991001025-6	夾線螺釘	Tension post	1
	25-7	991001025-7	挑線簧	Take-up spring	1
		991001025H-7	挑線簧（厚料）	Take-up spring	1
	25-8	991001025-8	調線簧調節座	Tension post socket	1
	25-9	S143574005	夾線螺絲緊固螺釘	Screw 9/64×40 L=5.5	1
	25-10	991001025-10	O 型圈	O ring	1
	26	S115952811	夾線器支緊螺釘	Screw 15/64×28 L=7	1
	27	991001027	松線釘	Tension releasing	1
	28	997001030	針板 3/16	Throat plate3/16	1
		997001030-1	針板 1/8	Throat plate1/8	1
		997001030-2	針板 1/4	Throat plate1/4	1
		997001030-3	針板 3/8	Throat plate3/8	1
		997001030-4	針板 5/32	Throat plate5/32	1
		997001030-5	針板 5/16	Throat plate5/16	1
E	30	S044374005Z	針板螺釘	Screw 11/64×40 L=6	2
	31	991001031	左線勾	Arm thread guide left	1
	32	S074374006	左線勾螺釘	Screw 9/64×40 L=6	1
	33	991001033	面板調節孔塞	Rubber plug	2
	34	S094762809	面板螺釘	Screw 3/16×28 L=8	3
	35	991001035	推板組件	Slide plate asm	1
	35-1	991001035-1	推板	Slide plate	1
	35-2	991001035-2	推板簧	Bed slide spring	1
	35-3	S082385602	推板簧螺釘	Screw 3/32×56 L=2.2	2
	36	991001036	底板支柱	Bed slide spring	4
	39	991001039	型號牌鉚釘	Pole	2

SIRUBA SEQUENCE LIST		Series	Parts Group	Subclass Remark	Page
		DL720-RM1	01		2 / 2
					Date
					2023/03/14
A	40	180001040	型號牌	Modle plate	1
	41	183001041	繞線器組件	Winder assembly	1
	41-1	991001041-1	擋圈 E4	"Ring E4"	2
	41-2	991001041-2	繞線軸基座	Bobbin base	1
	41-3	991001041S-3	繞線軸 短	Spool	1
	41-4	991001041-4	O 型圈 P9	O ring	1
	41-5	991001041-5	平墊圈 S6	Flat washer	1
	41-6	991001041S-6	繞線輪 小	Winding wheel	1
	41-7	991001041-7	螺釘 M5X5	Screw M5x5	2
	41-8	991001041S-8	橡皮墊圈 小	Rubber washer	1
	41-9	991001041-9	梭芯夾凸輪組件	Shuttle cam asm.	1
	41-9-1	991001041-9-1	梭芯夾凸輪	Shuttle cam	1
	41-9-2	991001041-9-2	螺釘 M5X5	Screw M5x5	1
	41-9-3	991001041-9-3	梭芯夾軸	Shuttle clamp shaft	1
	41-11	991001041-11	平墊圈 S6	Flat washer	2
	41-12	991001041-12	梭芯壓臂柄	Shuttle arm handle	1
	41-13	991001041-13	螺釘 M4X12	Screw	1
	41-14	991001041-14	梭芯夾	Bobbin clip	1
	41-15	991001041-15	螺釘 SM4.76	Screw	2
	41-16	991001041-16	梭芯座	Bobbin base	1
	41-17	991001041-17	繞線杠杆	Winding lever	1
B	41-18	991001041-18	彈簧	Spring	1
	41-19	991001041-19	彈簧	Spring	1
	41-20	991001041-20	O 型密封圈 S5	O type sealing ring	1
	41-21	991001041-21	卡簧	Clip spring	1
	42	M080500810	繞線器螺釘	Bobbin screw	3
	43	991001043	割線刀	Knife	1
	44	S093574005	割線刀螺釘	Knife screw	2
	45	720001046	繞線夾線器組件	Thread tension asm.	1
	45-1	720001045-1	夾線螺母	Tension nut	1
	45-2	991001045-2	夾線螺釘	Tension post	1
	45-3	991001045-3	夾線彈簧	Tension spring	1
C	45-4	991001045-4	夾線板	Thread tension disk presser	2
	45-5	991001045-6	夾線螺母（下）	Tension nut	1
	46	180101046Y	電控組件	Motor cover	1
	47	M180500835	電控螺釘	Screw	3
	48	183001049	倒縫燈開關元件	Reverse seam lamp switch assembly	1
	49	991001049	大線勾	Presser bar thread guide	1
	50	S094762806	倒縫燈開關固定螺釘	Screw	2
	51	S074374006	三眼線勾螺釘	Screw	1
	52	991001052	油線板組件	Oil plate assembly	1
	53	S073574011Y	油線板固定螺釘	Screw	2
	54	991001056	繞線器墊片	Bobbin Washer	1
D	55	991004042	防油板墊片	Grease plate gasket	1
	56	991001058	橡膠塞	Rubber plug	1
	57	280001063	操作面板出線橡膠塞	Rubber plug	1
	58	180001058	操作面板組件	operation panel	1
	59	M180500825	電控螺釘	Screw	1
	60	280008009	橡膠塞	Rubber plug	2
	61	991001061	尼龍線夾	Plastic clip	2
	62	S094762806	線夾螺釘	Screw	2
	63	280001066	線夾 2	Wire clip 2	2
	64	N214374003	螺母	Nut	1
	65	180001065	連接線	Connecting line	1
E	66	720001015	倒縫限位套緊固螺釘	Screw 3/16×28 L=15	1
	67	280001076	倒縫限位套	Reverse feed lever stopper	1

SIRUBA PARTS LIST	Series	Parts Group	Subclass Remark	Page
	DL720-RM1	02		1 / 1
				Date
				2023/03/14

A

B

C

D

E

1

2

3

4

5

6

7

8

9

10

11

12

13

14

15

16

17

18

19

20

21

22

23

24

25

26

27

28

29

29-1

30

31

32

33

34

35

36

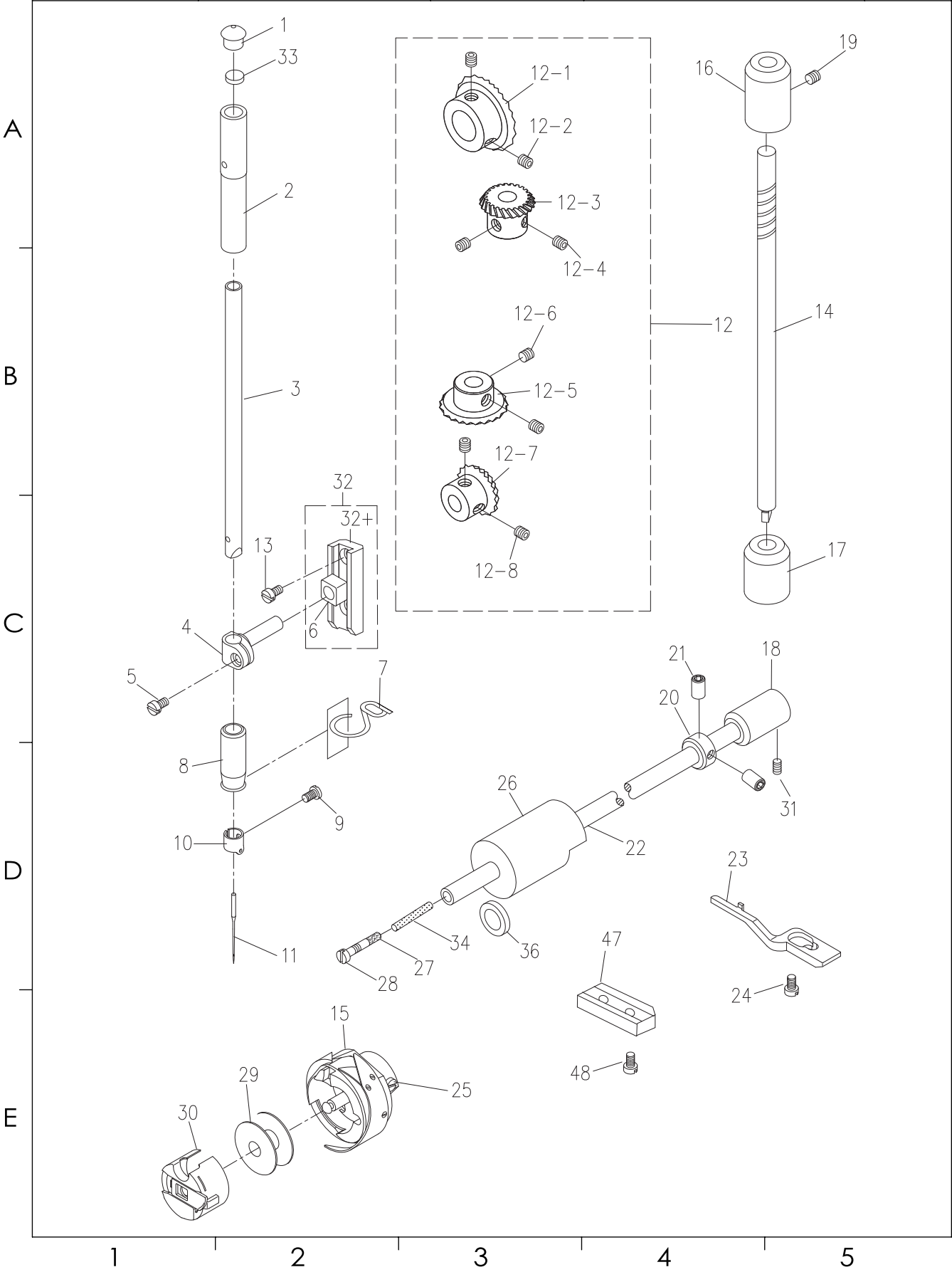
37

38

39

SIRUBA SEQUENCE LIST		Series	Parts Group	Subclass Remark	Page
		DL720-RM1	02		1 / 1
					Date
					2023/03/14
序號	新圖號	名 稱	Name of parts	數量	備註
1	991002001	挑線連杆銷螺釘	Screw 15/64×28 L=10.5	1	
2	991002002	挑線連杆銷	thread take-up crank shaft	1	
3	2800030306-1	曲柄油量限制氈	Roller felt	1	
4	991002004	挑線連杆組件	thread take-up lever asm	1	
4-1	991002004-1	挑線杆	take-up lever	1	
4-2	991002004-2	挑線連杆	Pick line connecting rod	1	
5	991002005	挑線杆滾針軸承	Needle bearing	2	
6	991002006	挑線曲柄	Needle bar crank	1	
7	991002007	針杆連杆	Needle bar crank rod	1	
8	991002008	挑線曲柄左旋螺釘	Left screw 9/64×40 L=4.8	1	
9	995002009	針杆曲柄組件	Counter weight	1	
9-1	S154374006	針杆曲柄緊固螺釘	Screw 9/32×28 L=16	1	
9-2	S116354006	挑線曲柄定位螺釘	Screw 1/4×40 L=6	2	
9-3	991002009-3	定位螺絲 O 型圈	Rubber ring	1	
9-4	S077142815	針杆曲柄定位螺釘	Screw 9/32×28 L=15.5	1	
9-5	995002009-5	針杆曲柄	Counter weight	1	
10	991002010	送料偏心輪組件	Feed drive eccentric cam asm.	1	
10-1	S076354011	送料偏心輪螺釘	Screw 1/4×40 L=11	2	
10-2	991002010-2	送料偏心輪	Feed drive eccentric cam	1	
11	S093574006	送料偏心輪蓋板螺釘	Screw 9/64×40 L=6	2	
12	991002012	上軸後套	"Mainshaft back sleeve"	1	
13	991002013	上軸後套油封	Oil seal of mainshaft back sleeve	1	
14	991002014	卡簧	Snap ring	1	
15	991002015	上軸擋圈	Thrust collar asm	1	
16	S116354006	上軸擋圈螺釘	Screw 1/4x40 L=6	2	
17	995002017	上軸前軸套	Main shaft front bushing asm.	1	
18	991002018	上軸中軸套	Bushing intermediate	1	
19	991002019	挑線杆橡皮套	Rubber	1	
20	991009008	挑線連杆銷供油線	Thread take-up crank shaft felt	1	
21	M140500806	手輪螺釘	Screw	2	
22	991002022C-2	手輪	Hand wheel(Magnetic steel)	1	
23	183002023	上軸	Main shaft	1	
24	991002024	上軸油量調節銷	Oil amount adjusting pin	1	
25	991002025	上軸油量調節銷 O 型圈	Rubber ring	1	
26	991002026	送料偏心輪蓋板	Thrust collar	1	
27	S145952806	上軸中軸套螺釘	Screw	1	
28	920102028	電機定子	Stator	1	
29	920102029	電機轉子	Rotor	1	
29-1	M140601006	電機轉子螺釘	Screw	2	
30	M180500825	電機安裝螺釘 M5X25	Screw	4	
31	W230651004	電機安裝螺釘墊片	Washer	4	
32	920102028A	電機組件	Motor components	1	
33	W220801605	墊片	Washer	1	
34	180002034	風扇	Fan	1	
35	M140601006	風扇螺釘	Screw	2	
36	S094762806	地線螺絲	Screw	1	
37	870002013	油量銷套	Oil throttle	1	
38	180002038	編碼器	encoder	1	
39	997002047	平衡塊	balance weight	1	

<div>SIRUBA</div> <div>PARTS LIST</div>	Series	Parts Group	Subclass Remark	Page
	DL720-RM1	03		1 / 1
				Date
				2023/03/14



SIRUBA SEQUENCE LIST		Series	Parts Group	Subclass Remark	Page
		DL720-RM1	03		1 / 1
					Date
					2023/03/14
序號	新圖號	名 稱	Name of parts	數量	備註
1	991003001	針杆上孔塞	Cap	1	
2	991003002	針杆上套	Needle bar bushing upper	1	
3	991003003	針杆	Needle bar	1	
4	991003004	針杆連接柱	Needle rod holder asm.	1	
A 5	S073574007	針杆連接柱螺釘	Screw 9/64×40 L=7.5	1	
6	991003006	針杆連接柱滑塊	Slide block	1	
7	991003007	針杆下套線鉤	Needle bar thread guide	1	
8	991003008	針杆下套	Needle bar bushing lower	1	
9	S083184405	機針螺釘	Screw 1/8×44 L=4.8	1	
10	991003010	針杆過線環	Needle bar thread guide	1	
11	991014011	機針 DBx1 14#	Needle DBx1 #14	1	
12	991003012	傘齒輪組件	Gear pinion asm.	1	
12-1	991003014	上軸傘齒輪	Gear asm.	1	
B 12-2	S116354008	傘齒輪螺釘	Screw 1/4×40 L=8	2	
12-3	991003016	豎軸上傘齒輪	Pinion asm.	1	
12-4	S116354008	傘齒輪螺釘	Screw 1/4×40 L=8	2	
12-5	991003019	豎軸下齒輪	Gear asm.	1	
12-6	S116354008	傘齒輪螺釘	Screw 1/4×40 L=8	2	
12-7	991003021	下軸傘齒輪	Pinion asm.	1	
12-8	S116354008	傘齒輪螺釘	Screw 1/4×40 L=8	2	
13	S074374007P	滑塊座螺釘	Screw SM11/64×40 L=8	2	
14	991003014-1	豎軸	Upright shaft	1	
15	180003015-1	旋梭	Hook asm.	1	
16	991003016	豎軸上軸套	Upright shaft bushing,upper	1	
C 17	991003017	豎軸下軸套	Upright shaft bushing,lower	1	
18	991003018	下軸後軸套	Bushing rear	1	
19	S145952806	豎軸上套緊固螺釘	Screw	1	
20	991003020	下軸擋圈	Thrust collar asm.	1	
21	S074374005	下軸擋圈螺釘	Screw 11/64×40 L=5	2	
22	991003022	下軸	Lower shaft	1	
	991107001	下軸 (9911 機型)	Lower shaft	1	
23	991003023	旋梭定位勾	Bobbin case holder	1	
	030306026	旋梭定位勾 (9911 機型)	Bobbin case holder	1	
24	S084374011	旋梭定位勾螺釘	Screw SM11/64×40 L=11	1	
D 25	991003025	旋梭螺釘	Screw	2	
26	180003026	下軸前套 (長)	Lower shaft front metal	1	
27	991003027	下軸限油芯	Oil wick	1	
28	991003028	下軸限油螺釘	Oil seal screw	1	
29	870005003	梭芯	Bobbin	1	
30	870005002	梭殼	Bobbin case	1	
31	S145952806	下軸後軸套螺釘	Screw	1	
32	991003032A	針杆滑塊座組件	Slide block base	1	
32+	991003032	針杆連接柱滑塊座	Slide block base	1	
33	280003036	針杆油氈	Needle rod linoleum	1	
E 34	LL1122	油芯	Oil core	1	
36	030306031	下軸油封	Lower shaft oil seal	1	
47	997006047	定刀座	Fixed tool rest	1	
48	S074374007P	螺釘	Screw	1	

SIRUBA

PARTS LIST

Series

DL720-RM1

Parts Group

04

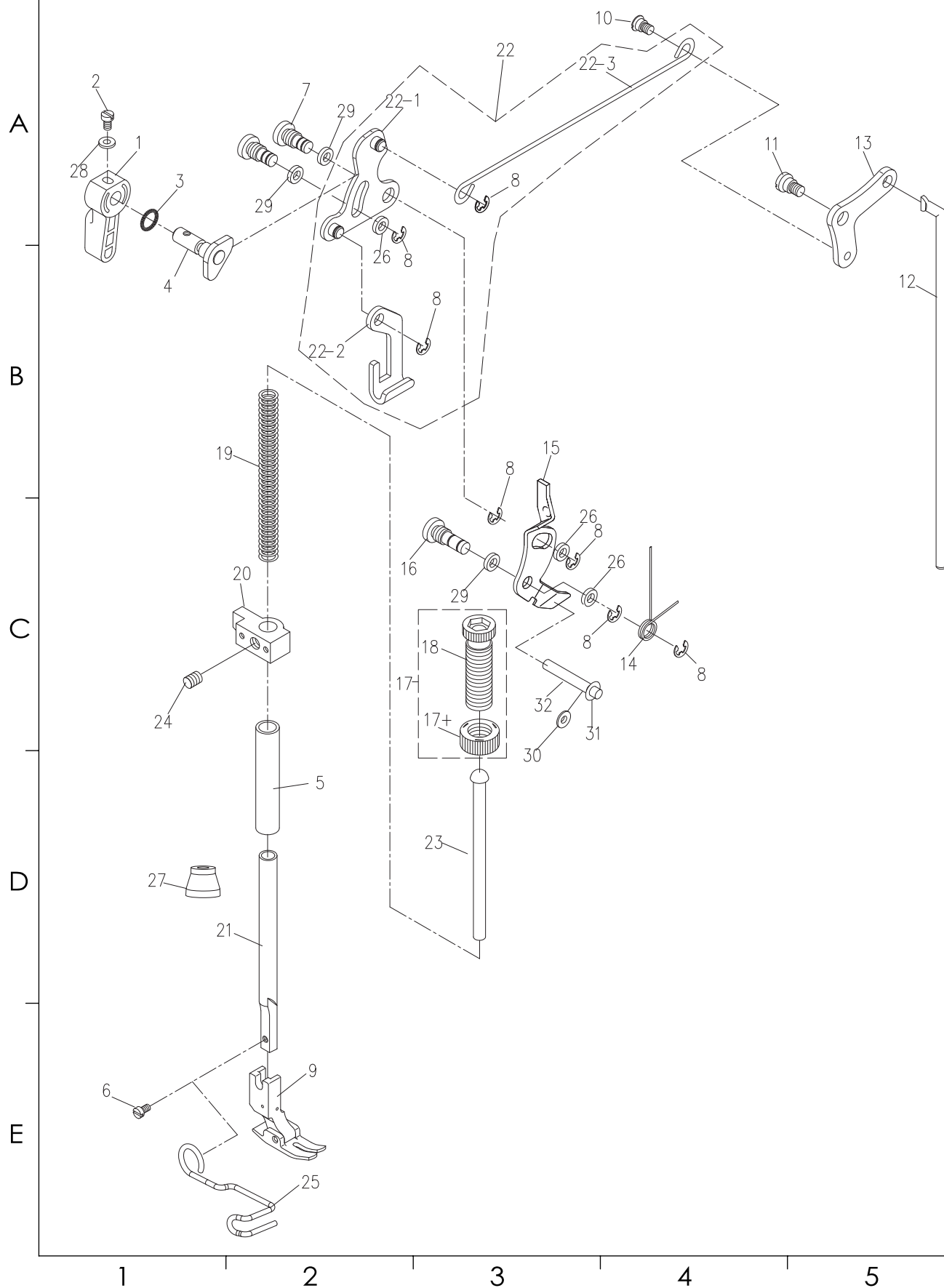
Subclass Remark

Page

1 / 1

Date

2023/03/14



PARTS LIST	Series	Parts Group	Subclass Remark	Page
	DL720-RM1	05		1 / 1
				Date
				2023/03/14

A

B

C

D

E

1

2

3

4

5

SIRUBA SEQUENCE LIST		Series	Parts Group	Subclass Remark	Page
		DL720-RM1	05		1 / 2
					Date
					2023/03/14
序號	新圖號	名 稱	Name of parts	數量	備註
1	991005001	倒送料連杆	Feed adjust rod	1	
2	991005002	倒送料連杆銷	Feed regulator pin	1	
3	S093574006	倒送料連杆銷螺釘	Feed regulator pin screw	2	
3+	M140500806	送料調節器緊固螺釘	Feed regulator Fastening screw	2	
4	991005004	送料調節器	Feed regulator	1	
5	920105005	送料調節器軸套	Feed regulator bushing	1	
6	920105006	送料調節器軸	Feed regulator shaft	1	
7	991005007	針距調節螺杆	Feed regulator screw	1	
8	991005008	止動銷彈簧	Spring	1	
9	991005009	止動銷	Feed adjustpin	1	
10	LC1108	針距旋鈕	Needle distance knob	1	
11	S074762818	針距旋鈕螺釘	Screw 3/16×28 L=18	1	
12	991005012	送料連杆	Rocker shaft connecting rod	1	
13	991005013	送料連杆銷	Walking foot long pin	1	
14	S083574004	送料連杆銷螺釘	Screw 9/64×40 L=4	1	
15	991005015	抬牙連杆	Connecting rod	1	
16	991005016	針距調節螺杆 O 型圈	Rubber ring	1	
17	991005017	擺動板座復位簧	Feed reverse spring	1	
18	991005018	擋圈 E5	E-ring 5	2	
19	991005019D	倒送料曲柄組件 =	Feed reverse arm asm	1	
20	S074762815	倒送料曲柄螺釘	Feed reverse arm screw	1	
21	991005021	倒送料拉簧	Spring	1	
22	991005022	短擺動板連接銷	Walking foot short pin	2	
23	991005023	長擺動板	Connecting link long pin	2	
24	991005024	短擺動板	Connecting link short pin	2	
25	991005025	擺動座	Feed adjust link asm	1	
26	991005026	擺動板座左銷	Adjusting link fulcrum shaft	1	
27	991002001	左右銷螺釘	Screw 15/64×28	2	
28	S123574005	連杆銷螺釘	Screw 9/64×40 L=5	2	
29	991005029	牙架偏心銷	Feed bar shaft	1	
30	991005030	軸用卡簧	Retaining ring	1	
31	995005031-1	送布牙 1/8	Fedd dog	1	
32	S073184406	送布牙螺釘	Screw 1/8×44 L=6	2	
33	991005033	牙架部件	Feed bar asm	1	
33	991005033D	牙架部件 (大旋梭)	Feed bar asm	1	
34	991005034	擺動板座復位板	Adjusting link spring guide	1	
35	S074374008	復位板緊固螺釘	Screw 11/64×40 L=8	2	
36	991005036	拉簧固定板	Feed spring hood	1	
37	991005037	送布軸	Feed rocker shaft	1	
38	991005038	送布曲柄銷	Walking foot middle pin	1	
39	S073574008	曲柄銷螺釘	Screw 9/64×40 L=8	1	
40	N217142805	抬牙連杆軸位螺母	Nut 9/32×28	1	
41	991005041	送布曲柄	Feed rocker shaft crank	1	
42	S074762815	送布曲柄螺釘	Screw 3/16×28 L=15	1	
43	991005043	抬牙後曲柄	Lifting rocker asm.	1	
44	S074762815	抬牙後曲柄螺釘	Screw 3/16×28 L=15	1	
45	991005045	抬牙連杆軸位螺釘	Hinge screw	1	
46	991005046	抬牙軸	Feed driving shaft	1	
47	991002015	擋圈	Thrust collar asm.	1	

1

2

3

4

5

SiRUBA SEQUENCE LIST		Series	Parts Group	Subclass Remark	Page
		DL720-RM1	05		2 / 2
					Date
					2023/03/14
A	48	S126354004	送布軸擋圈螺釘	Screw 1/4 × 40 L=4	2
	49	991005049	送布軸前軸套	Feed rocker shaft bushing	2
		991005049D	抬壓軸前軸套（大旋梭）	Axle sleeve	1
	50	S084374007	牙架銷螺釘	Screw 11/64 × 40 L=7	2
	51	991005030	軸用卡簧	Retaining ring	1
	52	995005033	牙架座（牙架曲柄）	Feed bar crank asm.	1
	53	S074762812	牙架座螺釘	Screw 3/16 × 28 L=12	1
	54	991005054	抬牙叉	Driving shaft crank asm.	1
	55	S084374012	抬牙叉螺釘	Screw 11/64 × 40 L=12	1
	56	991005056S	倒送料扳手組件	Reverse feed control lever asm.	1
B	56-1	991005056-1	倒送料軸 O 型圈	Rubber ring	1
	56-2	991005056-2	倒送料軸	Feed reverse shaft	1
	56-3	S145952806	倒送料扳手螺釘	Screw	2
	56-4	991105056-5	倒送料扳手	Reverse frnd control lever	1
	57	991002015	擋圈	Thrust collar	1
	58	S126354004	抬牙軸擋圈螺釘	Screw 1/4x40 L=4	2
	59	991005059	擺動軸板座右銷	Adjusting link fulcrum shaft	1
	60	180005060	倒送料軸軸套	Feed lever metal	1
	61	680013029	墊片	Washer	1
	62	995007028	牙架擋屑板	Die holder chip guard	1
C	63	S093574005	螺釘	Screw	2
D					
E					

<div>SIRUBA</div> <div>PARTS LIST</div>	Series	Parts Group	Subclass Remark	Page
	DL720-RM1	06		1 / 1
				Date
				2023/03/14

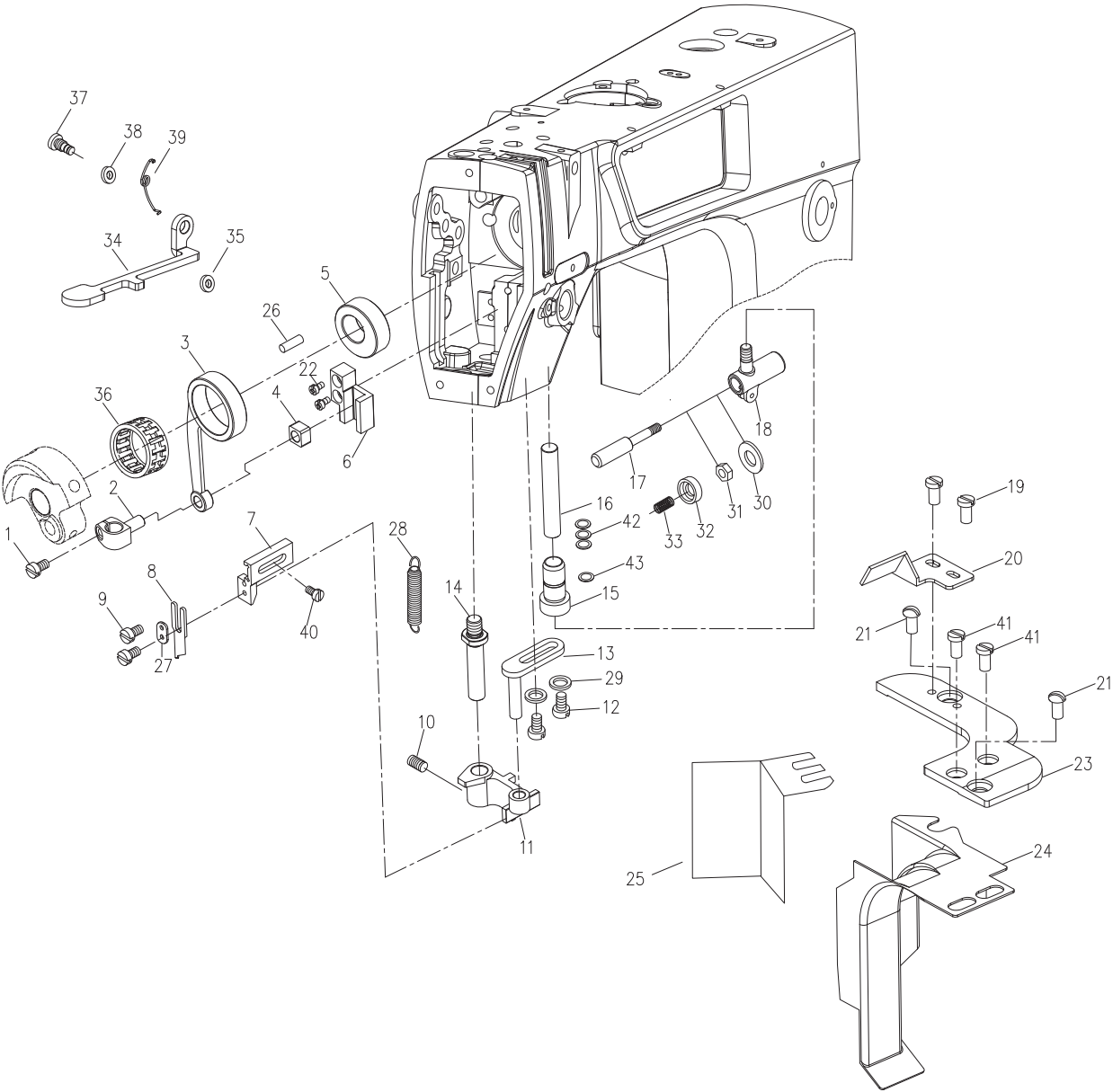
A

B

C

D

E



SiRUBA SEQUENCE LIST		Series	Parts Group	Subclass Remark		Page
		DL720-RM1	06			1 / 1
						Date
						2023/03/14
序號	新圖號	名 稱	Name of parts	數量	備註	
1	S073574007	螺釘	Screw	1		
2	997008002	接頭	Joint	1		
3	997008003	連杆	Connecting rod	1		
4	997008004	滑塊	Slider	1		
5	997008005	偏心軸	Eccentric shaft	1		
6	997008006	滑塊槽	Tool holder	1		
7	997008007	刀架	Tool holder 1	1		
8	997008008	上切刀	Blade	1		
9	S073184406	螺釘	Screw	2		
10	S084374012	螺釘	Screw	1		
11	997008011	切刀座	Tool holder 2	1		
12	M0700500808	螺釘	Screw	2		
13	283007013	刀架導杆	Tool carrier guide 1	1		
14	997008014	切刀座軸	Tool carrier guide 2	1		
15	997008015	刀架驅動軸套	Tool driving sleeve	1		
16	997008016	刀架驅動軸	Tool carrier drive shaft	1		
17	997008017	切刀離合銷	Tool pin	1		
18	997008018	刀架支架	Tool crank	1		
19	S093574005	螺釘	Screw	2		
20	283008020	針板擋屑導向板	Pin baffle guide plate	1		
21	S044374006Z	螺釘	Screw	2		
22	S074374010	螺釘	Screw	2		
23	283008023	針板擋板	Needle plate baffle	1		
24	283008024	針板擋屑罩	Pin baffle	1		
25	283008025	針板擋屑擋板	Pin plate mounting board	1		
26	997008026	銷子	Pin	1		
27	997008036	壓板	Press board	1		
28	995007033	拉簧	Drag spring	1		
29	997008039	墊片	Shim	1		
30	997008032	端蓋	End cover	1		
31	991006006	螺母	Nut	1		
32	997008031	旋鈕	Knob	1		
33	997008035	彈簧	Spring	1		
34	995014015	切刀扳手	Knife wrench	1		
35	997008039	墊片	Washer	1		
36	9950014018	滾針軸承 0-2	Needle bearing	1		
37	995007037	螺釘	Screw	1		
38	995007001	墊片	Shim	1		
39	995014016	彈簧	Spring	1		
40	995007035	螺釘	Screw	1		
41	S082385602	螺釘	Screw	2		
42	680005038	墊片	Shim	3		
43	991005056-1	O 型圈	O ring	1		

SIRUBA PARTS LIST	Series	Parts Group	Subclass Remark	Page
	DL720-RM1	07		1 / 1
				Date
				2023/03/14

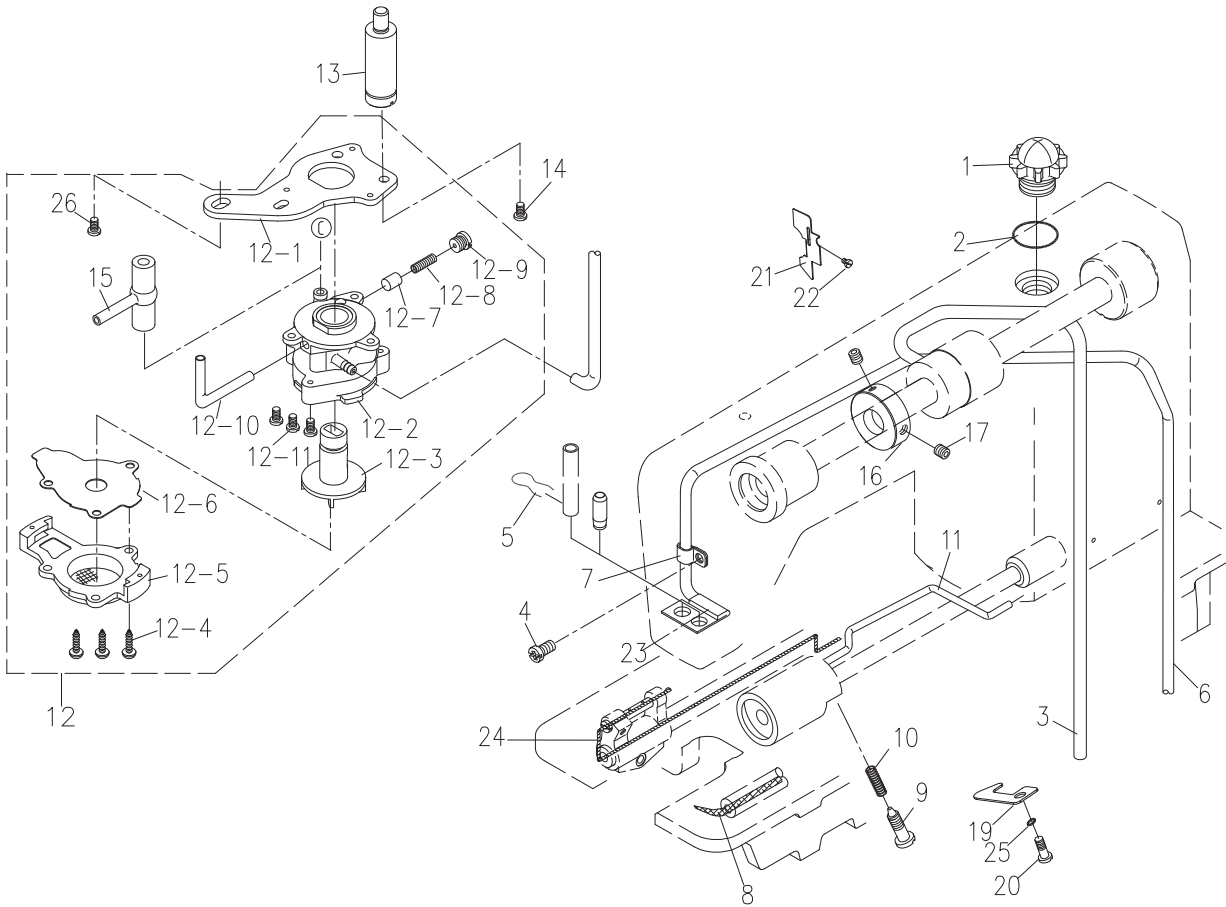
A

B

C

D

E



SiRUBA SEQUENCE LIST		Series		Parts Group		Subclass Remark		Page	
		DL720-RM1		07				1 / 1	
								Date	
								2023/03/14	
序號	新圖號	名 稱		Name of parts		數量	備註		
1	991009001	油窗		Oil sight window		1			
2	991009002	油窗 O 型圈		Rubber ring		1			
3	991009003	上軸供油管		Main shaft oil tube		1			
4	S094762806	回油管夾螺釘		Screw 3/16x28 L=6		1			
5	991009005	回油氈夾		Oil felt presser		1			
6	991009006	回油管		Oil return tube asm		1			
7	991009007	回油管夾		Holder		1			
8	991009008	抬牙油線		Oil wick		1			
9	991009009-1	旋梭油量調節螺釘		Oil adjusting screw		1			
10	991009010	旋梭油量調節簧		Spring		1			
11	180006011	旋梭供油管		Oil tube		1			
12	991009012	油泵部件		Lubricating oil pump asm		1			
12-1	991009012-1	油泵安裝板		Oil pump installing base		1			
12-2	991009012-2	油泵體		Oil pump		1			
12-3	991009012-3	油泵葉輪		Oil pump impeller		1			
12-4	991009012-4	油泵蓋螺釘		Screw		3			
12-5	991009012-5	油泵蓋		Lubricating oil pump cover		1			
12-6	991009012-6	油泵葉輪托板		Oil pump impeller cover		1			
12-7	991009012-7	回油柱塞		Plunger		1			
12-8	991009012-8	柱塞簧		Plunger spring		1			
12-9	991009012-9	柱塞螺釘		Plunger screw		1			
12-10	991007012	下軸供油管		Hook driving shaft oil tube		1			
12-11	M070300508	油泵安裝螺釘		Screw M3 L=8		3			
13	991009013	油泵連接螺柱		Oil pump support,large		1			
14	S074374010	油泵螺釘		Screw		1			
15	991009015	供油管接頭		Rubber joint		1			
16	991009016	繞線器驅動輪		Bobbin pulley		1			
17	S144374006	繞線器驅動輪螺釘		Screw		2			
26	ZSD15005	油泵螺釘		Screw 15/64x28 L=10		1			
19	870008022	壓板		Pressboard		1			
20	S075952810Z	螺釘		Screw		1			
21	720009018	擋板		Baffle		1			
22	S094762806	擋板螺釘		Screw		1			
23	991009019	油氈		Asphalt felt		1			
24	991009008	送布油線		Delivery line		1			
25	W230550933	彈簧墊圈		Washer		1			

<div>SIRUBA</div> <div>PARTS LIST</div>	Series	Parts Group	Subclass Remark	Page
	DL720-RM1	08		1 / 1
				Date
				2023/03/14

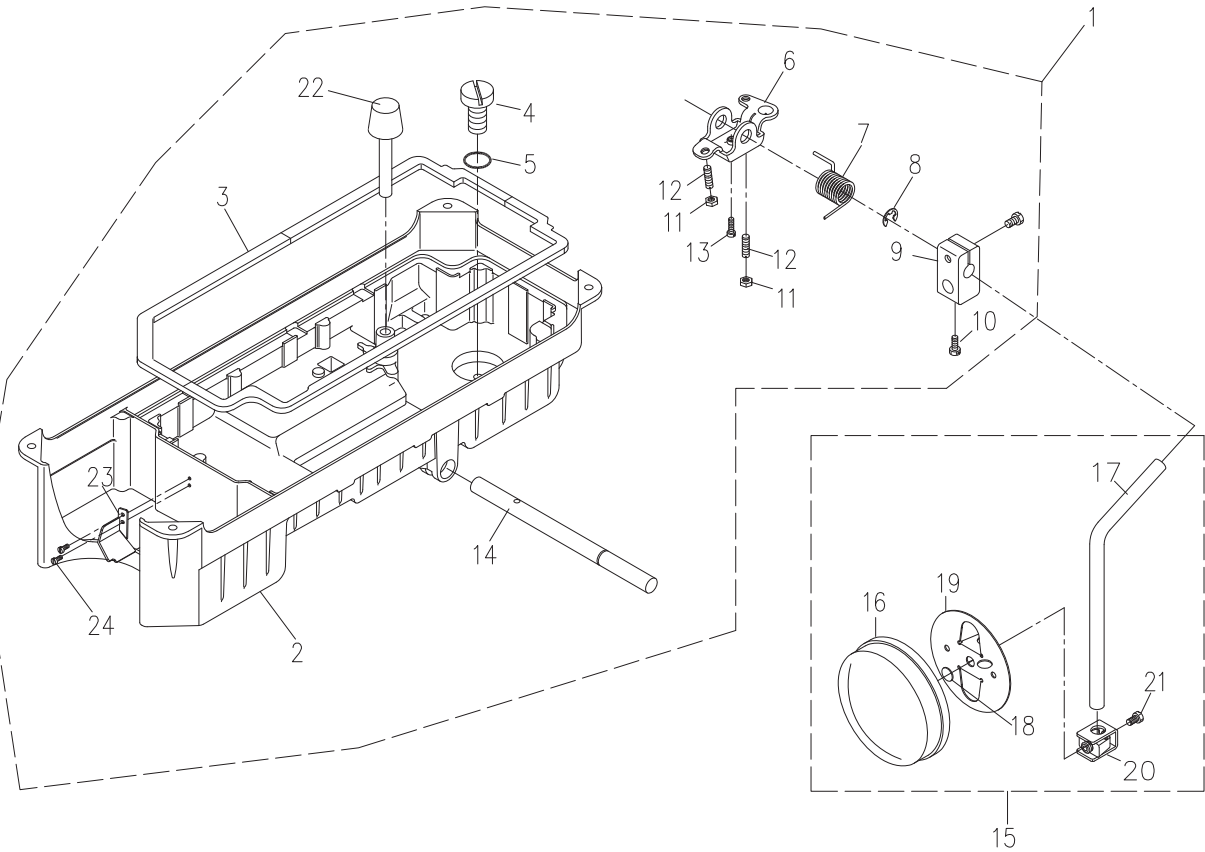
A

B

C

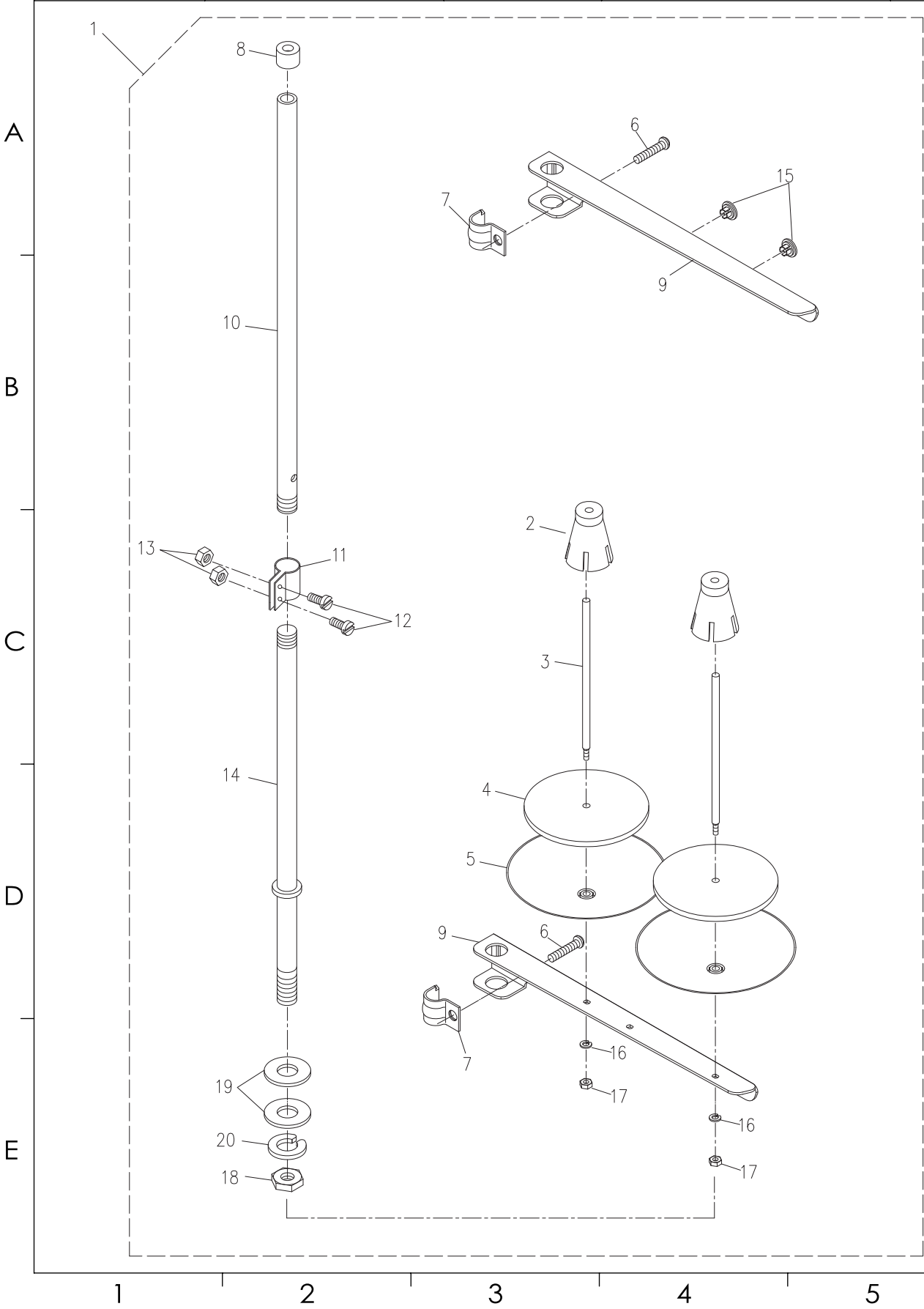
D

E

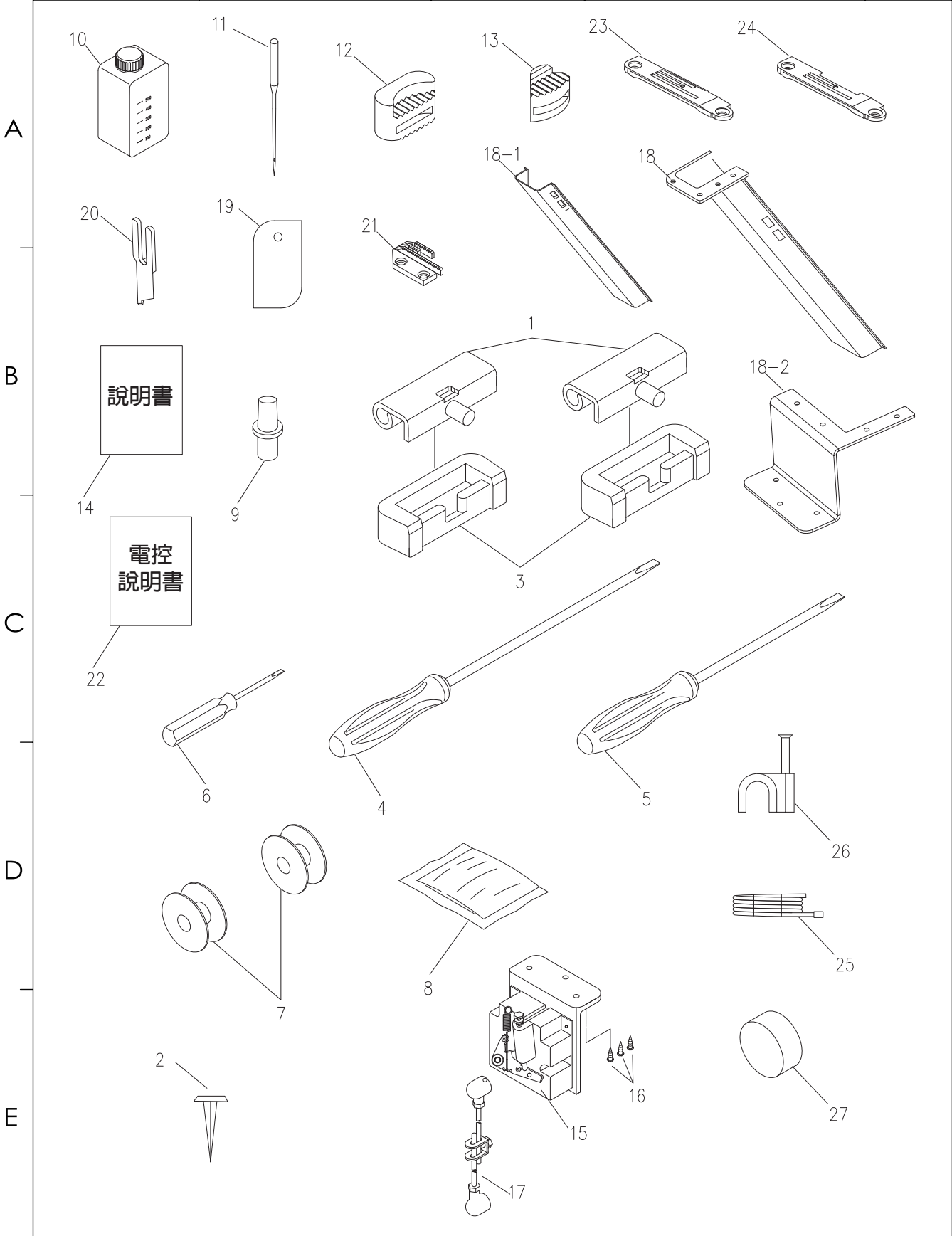


SiRUBA SEQUENCE LIST		Series	Parts Group	Subclass Remark	Page
		DL720-RM1	08		1 / 1
					Date
					2023/03/14
序號	新圖號	名 稱	Name of parts	數量	備註
1	995010001	油盤部件	Oil reservoir asm	1	
2	995010002	油盤	Oil reservoir	1	
3	991010003	油盤墊	Oil reservoir gasket	1	
A	S077942407	排油孔螺釘	Screw 5/16x24 L=7	1	
	991010005	排油孔螺釘 O 型圈	Rubber ring	1	
	991010006	抬壓腳雙向曲柄	Knee lifting rotating arm	1	
	991010007	雙向曲柄扭簧	Spring	1	
	991010008	抬壓腳軸開口擋圈	E-ring	1	
	991010009	抬壓腳操縱杆接頭	Vertical shaft fitting arm	1	
	991010010	操縱杆接頭螺釘	Screw	2	
	N210601006	雙向曲柄限位調節螺母	Nut M6	2	
B	M120601030	雙向曲柄限位調節螺釘	Screw M6 L=30	2	
	M190601018	雙向曲柄螺釘	Screw M6 L=17.5	1	
	995010014	抬壓腳軸	Knee press cross shaft	1	
	991010015	操縱杆部件	Knee pan plate asm	1	
	991010016	操縱杆軟墊	Knee pan plate cover	1	
	991010017	操縱杆	Knee pan upright shaft	1	
	991010018	操縱杆墊	Knee pan plate rubber	1	
	991010019	操縱板	Knee pan plate	1	
C	991010020	操縱杆接頭	Knee pan plate support	1	
	M190601012	接頭螺釘	Screw M6 L=12	1	
	991010022	抬壓腳頂杆	Knee lifter push rod	1	
	995013021	擋屑板	Scraper plate	1	
	S074374005P	螺釘	Screw	2	
D					
E					

SIRUBA PARTS LIST	Series	Parts Group	Subclass Remark	Page
	DL720-RM1	09		1 / 1
				Date
				2023/03/14



SIRUBA PARTS LIST	Series	Parts Group	Subclass Remark	Page
	DL720-RM1	10		1 / 1
				Date
				2023/03/14





高林股份有限公司
KAULIN MFG. CO., LTD.

由於對產品的改良及更新，本產品零件圖及外觀的修改恕不事先通知！
The specification and/or appearances of the equipment described in this parts list are
subject to change because of modification which will without previous notice.
BYL-13S13.MAR.2023