

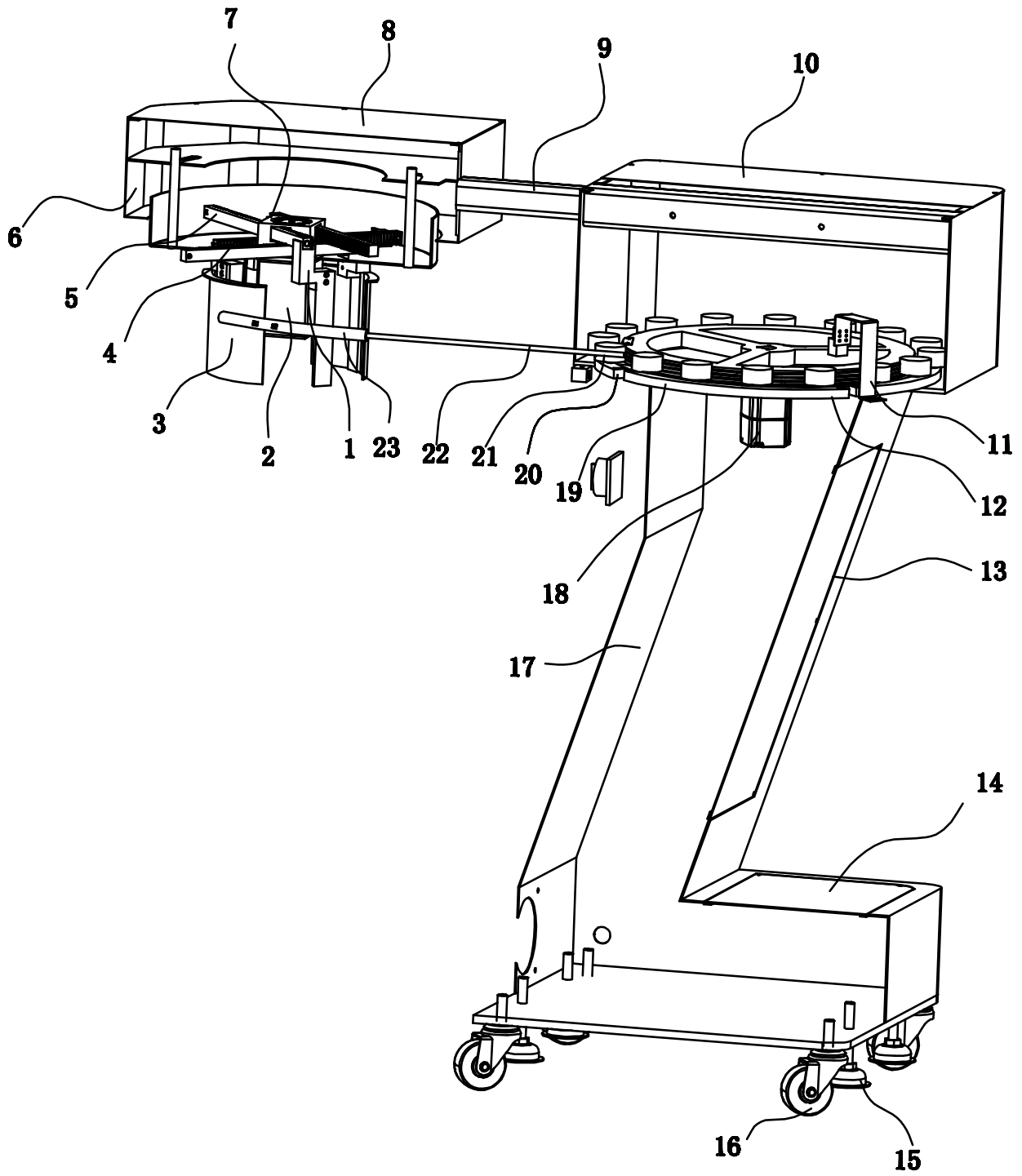
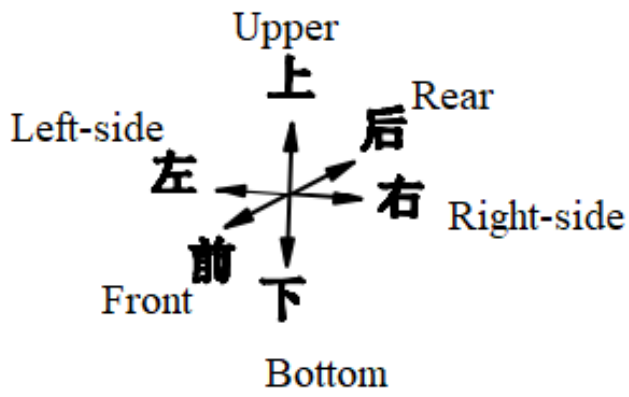
SIRUBA

零件圖

PARTS LIST

ASO-STM200





1.	褲形 (頭) 擴張器的定位器	expansion positioner
2.	褲形 (頭) 擴張器的直驅伺服電機	Direct-drive servo motor of expander
3.	褲形 (頭) 擴張器的擴張	Expansion plate
4.	褲形 (頭) 擴張器下齒條	Lower gear rack
5.	褲形 (頭) 擴張器上齒條	Upper gear rack
6.	褲形 (頭) 擴張器下蓋	Lower cover
7.	褲形 (頭) 擴張器直驅齒輪及齒輪座	Direct-drive gear and gear seat
8.	褲形 (頭) 擴張器上蓋	Upper cover
9.	褲形 (頭) 擴張器支撐體與連接柱	Support frame and connecting post
10.	主機體箱上蓋	Upper cover of main body
11.	鋼絲伸縮盤的定位扭	Positioning screw of wire retracting disk
12.	鋼絲伸縮盤	Wire retracting disk
13.	主體機箱中蓋	Middle cover of main body
14.	主體機箱下蓋	Lower cover of main body
15.	主體機箱支撐腳墊	Supported pad
16.	主體機箱滑動腳輪	Sliding caster wheel
17.	主軸機箱和鋼絲伸縮盤支撐體	Spindle housing and support frame of wire retracting disk
18.	鋼絲伸縮盤的直驅伺服電機	Direct-drive servo motor of wire retracting disk
19.	鋼絲伸縮盤外圍定位的帶紋軸承座	Surrounding positioning bearing seat with spindle
20.	鋼絲伸縮盤的定位原點	Home position of wire retracting disk
21.	鋼絲伸縮盤外圍定位的帶紋軸承	Peripheral positioning bearing with spindle of wire retracting disk
22.	伸縮鋼絲	Retractable wire
23.	伸縮鋼絲機座手柄前進後退的控制按鈕	Control button of handle with retractable wire base



高林股份有限公司
KAULIN MFG. CO., LTD.

由於對產品的改良及更新，本產品使用說明書中與零件圖之產品及外觀的修改恕不事先通知！
The specification and/or appearances of the equipment described in this instruction book & parts list are subject to change because of modification which will without previous notice.
ASO-STM200.SEP.2025