

# SIRUBA

零件圖

PARTS LIST

■ ASL-PSM104



# 目录部分

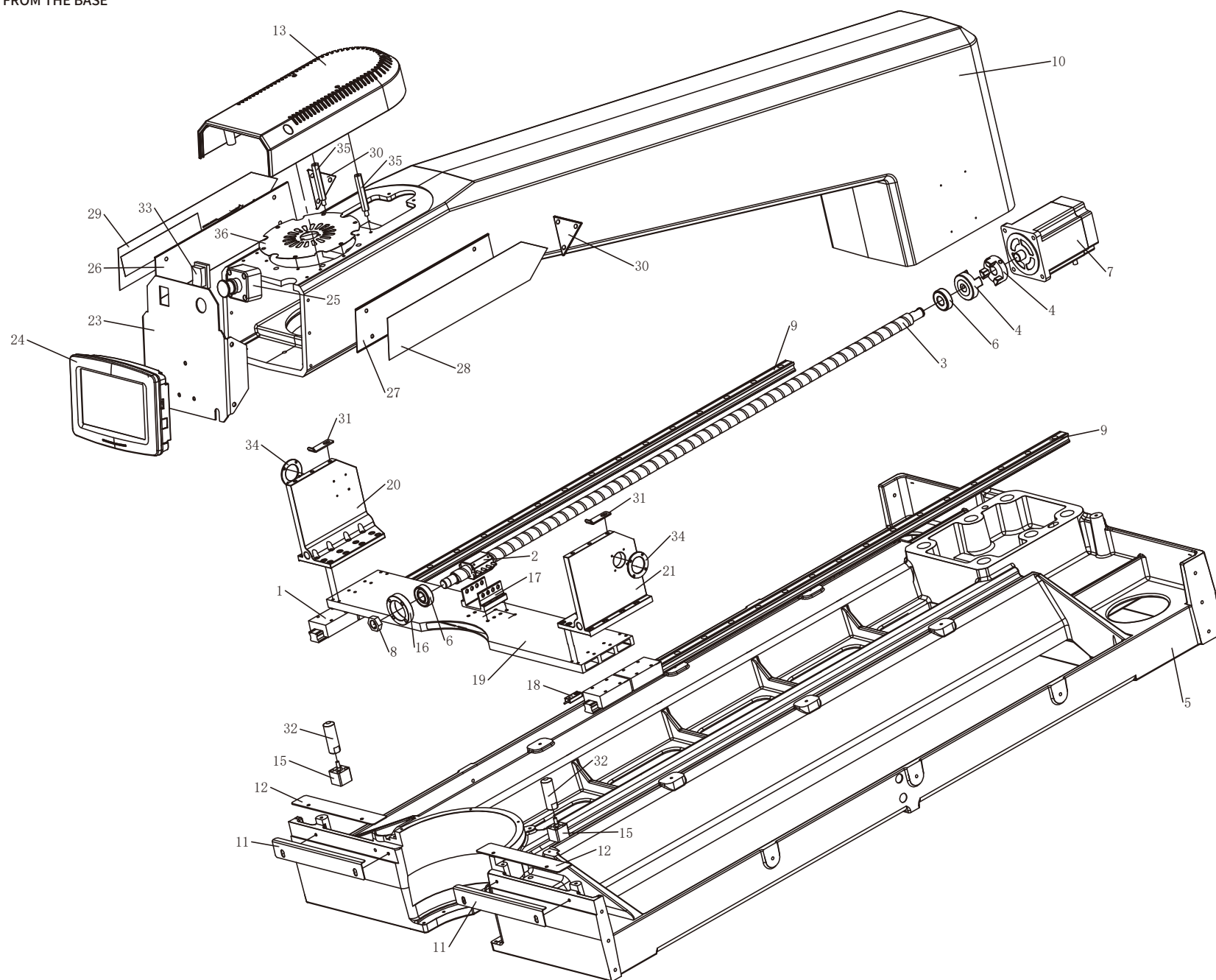
# CONTENTS

1	机头底座	1
2	上旋转头	3
3	上旋转同步轮	5
4	下旋转座	7
5	X横梁组合	9
6	台板部分	11
7	机架部分	13
8	老款移动横梁部分	15
9	附件部份	17

1	STARTING FROM THE BASE	1
2	THE SWIVEL	3
3	ON THE WHEEL ROTATION SYNCHRONIZATION	5
4	THE ROTARY SEAT	7
5	X BEAM COMBINATION	9
6	COUNTER PART	11
7	FRAME PART	13
8	OLD MOBILE BEAM SECTION	15
9	THE ATTACHMENT PART	17

1. 機頭底座 STARTING FROM THE BASE

1



### 1. 机头底座 STARTING FROM THE BASE

NO.	PART.NO.	名称	DESCRIPTION	Qty
1	SSR-20XW	滑块槽	SLIDE BLOCK SLOT	4
2	GC95150-2D	螺母块	NUT BLOCK	1
3	H360-58	Y丝杆	Y SCREW	1
4	GC900-28B	万向连接头	UNIVERSAL CONNECTORS	2
5	H360底板机壳	H360底座	H360 BASE	1
6	7002AC	轴承	BEARING	2
7	新GC900Y轴马达86X9	伺服马达	PRIVATE SERVERS MOTOR	1
8	螺母15X1M	丝杆螺母	SCREW THE NUT	1
9	G900-11	线规	WIRE GAUGE	2
10	H360-900-01铸铁	机头	THE NOSE	1
11	GC900-119	台板垫块	THE PLATEN BLOCK	2
12	H360-117	垫板	PLATE	2
13	PTH360-38	上盖	ON THE COVER	1
14	H360-116	商标后盖	TRADEMARK BACK COVER	1
15	ASQ-12X5	气缸	CYLINDER	2
16	GC900-61X	轴承套	BEARING SLEEVE	1
17	H360-99	螺母座	NUT SEAT	1
18	12传感器	传感器	THE SENSOR	1
19	GC360-900新	连接板	CONNECTION PLATE	1
20	GC900-10A	连接臂	THE CONNECTION ARM	1
21	GC900-10B	连接臂	THE CONNECTION ARM	1
22	6201	轴承	BEARING	1
23	PTH360-337A	显示屏支架	DISPLAY STAND	1
24	面板组件	显示屏	DISPLAY	1
25	安全开关-2	安全开关	SAFETY SWITCH	1
26	H360-204	商标内条	TRADEMARK WITHIN THE ARTICLE	1
27	H360-203	商标内条	TRADEMARK WITHIN THE ARTICLE	1
28	H360-201	商标外条	ARTICLE TRADEMARK OUTSIDE	1
29	H360-202	商标外条	ARTICLE TRADEMARK OUTSIDE	1
30	H360-204A	商标条三角盖	THE TRADEMARK OF TRIANGLE COVER	2
31	GC900-120X	挡片	BLOCK SLICE	2
32	GC500-57	模板顶块	TEMPLATE TOP BLOCK	2
33	船型开关	船型开关	SHIP TYPE SWITCH	1
34	109280	盖板	COVER PLATE	2
35	PTH360-39	六角螺柱	HEXAGON STUD	2
36	PTH360-21X	电环环盖板	ELECTRICITY INSIDE COVER	1

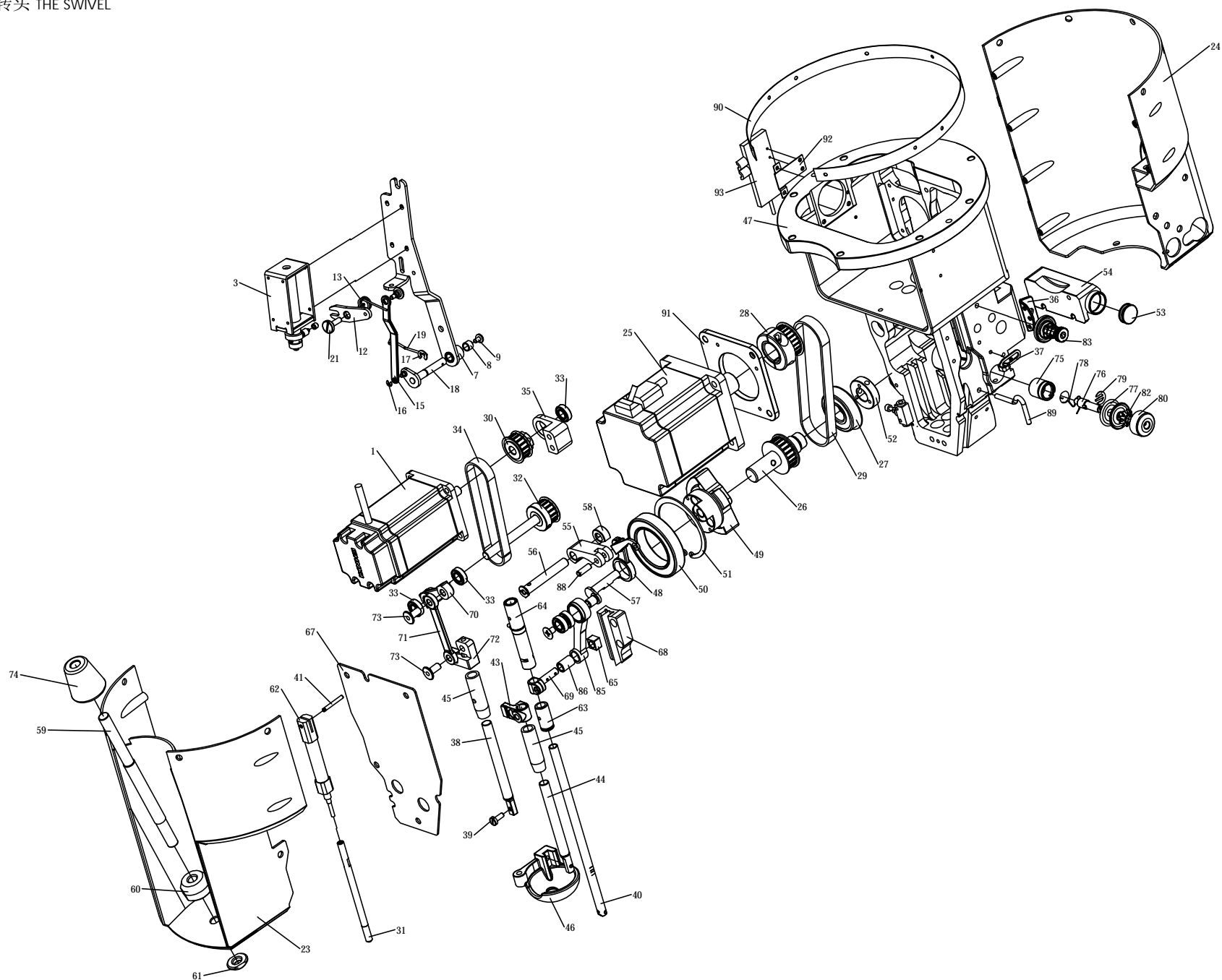
NO.	PART.NO.	名称	DESCRIPTION	Qty

NO.	PART.NO.	名称	DESCRIPTION	Qty

1

## 2. 上旋转头 THE SWIVEL

2

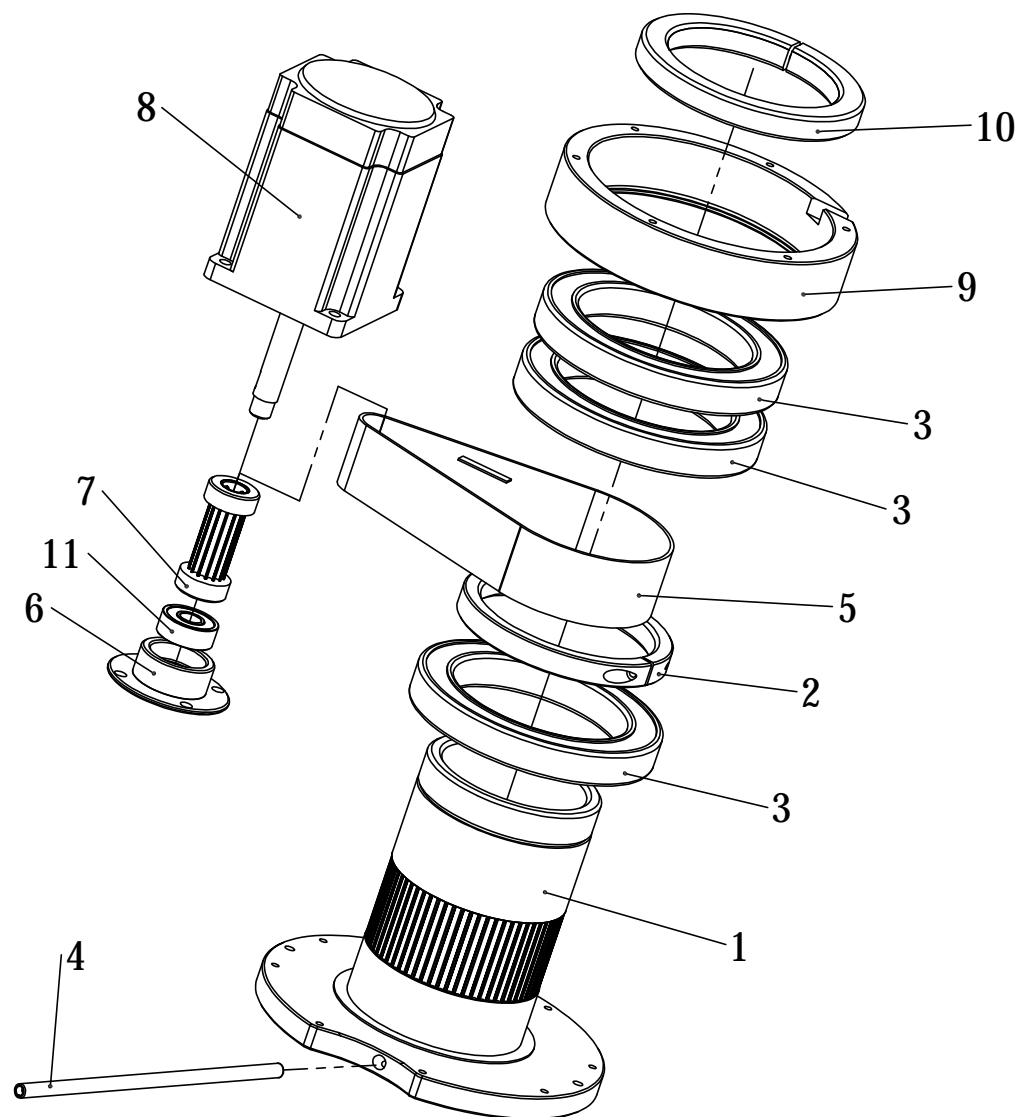


2. 上旋转头 THE SWIVEL

NO.	PART.NO.	名称	DESCRIPTION	Qty
1	PS-913	中压脚电机	MEDIUM PRESSURE FOOT MOTOR	1
2	004050	电磁铁	ELECTROMAGNET	1
3	BAS-2412-12-7	电磁铁外壳	ELECTROMAGNET SHELL	1
4	BAS-2412-12-1-3	线圈轴	THE COIL AXIS	1
5	BAS-2412-12-2-3	杠杆轴	LEVER SHAFT	1
6	BAS-2412-12-4-3	垫片	GASKET	1
7	PTH360-5	扫线器支架	SWEEP LINE SUPPORT	1
8	BAS-2412-11-14-3	垫套	CUSHION COVERS	1
9	SM-9-64-40 L=6	T8一字螺钉	A WORD SCREW	1
10	BAS-2412-11-10-3	滑套轴	SLIDING SLEEVE SHAFT	1
11	BAS-2412-11-11-3	滑套	SLIDING SLEEVE	1
12	BAS2412-112	杠杆	LEVERAGE	1
13	BAS-2412-11-8-3	扭簧	TORSIONAL SPRING	1
14	BAS2412-116	铰链螺钉	HINGE SCREWS	1
15	PTH360-6	连杆	CONNECTING ROD	1
16	GB-T896-2.5	卡簧	CIRCLIP	1
17	GB-T896-5-3	卡簧	CIRCLIP	1
18	GCS913-64	扫线曲柄	SCAVENGING THE CRANK	1
19	BAS2412-1113C	钩簧	THE HOOK SPRING	1
20	BAS-2412-11-12-3	组件	COMPONENT	1
21	BAS2412-113	铰链螺钉	HINGE SCREWS	1
22	GB-T9074.4-M3X6	十字螺钉	THE CROSS SCREW	1
23	PTH360-4B	防护盖	PROTECTIVE COVER	1
24	H360-4A	防护盖	PROTECTIVE COVER	1
25	EX4.0-750W	伺服马达	750W电机	1
26	H360-8X	同步轮	SYNCHRONOUS WHEEL	1
27	6203NR	轴承	BEARING	1
28	PTH360-10-400W	同步轮	SYNCHRONOUS WHEEL	1
29	PTH360-11-5MX325	同步带	SYNCHRONOUS BELT	1
30	PTH360-12	同步轮	SYNCHRONOUS WHEEL	1
31	PTH360-13	拉杆	TIE ROD	1
32	PTH360-15	同步轮	SYNCHRONOUS WHEEL	1
33	618	轴承	BEARING	3
34	H360-16-5M-250-10	同步带	SYNCHRONOUS BELT	1
35	PTH360-17	轴承支架	BEARING SUPPORT	1
36	1430-8	过线板	A LINE BOARD	1
37	501110	过线钩	THE THREAD HOOK	1
38	BAS2412-7	压脚杆	PRESSER FOOT POLE	1
39	SM-9-64-40 L10.5	螺钉	SCREW	1
40	PT3020-85	针杆	NEEDLE BAR	1

NO.	PART.NO.	名称	DESCRIPTION	Qty
41	PTH360-32	轴	SHAFT	1
42		节流阀	THROTTLE VALVE	1
43	PT3020-61-360	连接臂	THE CONNECTION ARM	1
44	PTH360-34	压脚杆	PRESSER FOOT POLE	1
45	SA4666001	针杆上套	NEEDLE BAR POSITION	1
46	PTH360-35	辅助压脚	AUXILIARY PRESSER FOOT	1
47	PTH360-02	动力头	POWER HEAD	1
48	P360-18	挑线杆	TAKE-UP	1
49	P360-20	平衡块	BALANCE WEIGHT	1
50	61900	轴承	BEARING	1
51	62内卡	卡簧	CIRCLIP	1
52	P360-9	手轮螺母	THE HAND WHEEL NUT	1
53	P360-14	油窗	OIL WINDOW	1
54	P360	油杯	OIL CUP	1
55	P360-17	挑线杆连杆	THREAD TAKE-UP CONNECTING ROD	1
56	AE-10060PS-37	挑线杆上轴	ON THE THREAD TAKE-UP SHAFT	1
57	P360-53	曲柄	THE CRANK	1
58	H360-001	挡圈	RETAINING RING	1
59	PTH360-19	线圈螺杆	COIL SCREW	1
60	PTH360-30	锁紧螺母	LOCK NUT	1
61	PTH360-31	锁紧螺母	LOCK NUT	1
62	CJ2D-10X20	气缸拉杆	THE CYLINDER ROD	1
63	PT3020-83	针杆下套	UNDER THE NEEDLE BAR	1
64	SA2195001	中压脚套	MEDIUM PRESSURE FOOT SET	2
65	107080-1	滑块	THE SLIDER	1
66	SM-9-64-40 L6	螺钉	SCREW	1
67	PTH360-14	盖板	COVER PLATE	1
68	H360-100-101	滑槽	CHUTE	1
69	PT3020-84	连接头	CONNECT THE HEAD	1
70	413020	杠杆连杆	LEVER CONNECTING ROD	1
71	BAS2412-4	中压脚连杆	MEDIUM PRESSURE FOOT CONNECTING ROD	1
72	BAS2412-8	压脚杆连接头	PRESSER FOOT POLE CONNECTING HEAD	1
73	BAS2412-9	台阶销轴	THE STEP PIN	2
74		导线环	WIRE RING	1
75	105230	夹线器固定座	THE THREAD CLAMP DEVICE IS FIXED	1
76	202230	过线柱	A LINE COLUMN	1
77	105220	过线片	BEFORE THAT LINE	2
78	105240	扭簧	TORSIONAL SPRING	1
79	夹线器+1	夹线器卡销	THREAD CLAMP DEVICE CARD PIN	1
80	夹线器+2	夹线器	THREAD CLAMP DEVICE	1

NO.	PART.NO.	名称	DESCRIPTION	Qty
81	GB-T77-M4X4	内止付螺钉	THE SCREW TO STOP	3
82	夹线器+6	波形垫片	CORRUGATED GASKET	1
83	夹线器-5	夹线器	THREAD CLAMP DEVICE	1
84	628Z	628轴承	628 BEARING	2
85	A8-120C-113	连杆	CONNECTING ROD	1
86	A003070	轴套	SHAFT SLEEVE	1
87	SM-9-64-40T	十字螺钉	THE CROSS SCREW	1
88	AE-10060PS-32	连杆销轴	CONNECTING ROD PIN	1
89	408080	过线钩	THE THREAD HOOK	1
90	H360-02A	抱箍	EMBRACE HOOP	1
91	PTH360-204	轴承支架	BEARING SUPPORT	1
92	SY3120单装-2X	气阀板	THE VALVE PLATE	1
93	SY3120单装气阀	单装气阀	SINGLE PACK VALVE	1



### 3. 上旋转同步轮 ON THE WHEEL ROTATION SYNCHRONIZATION

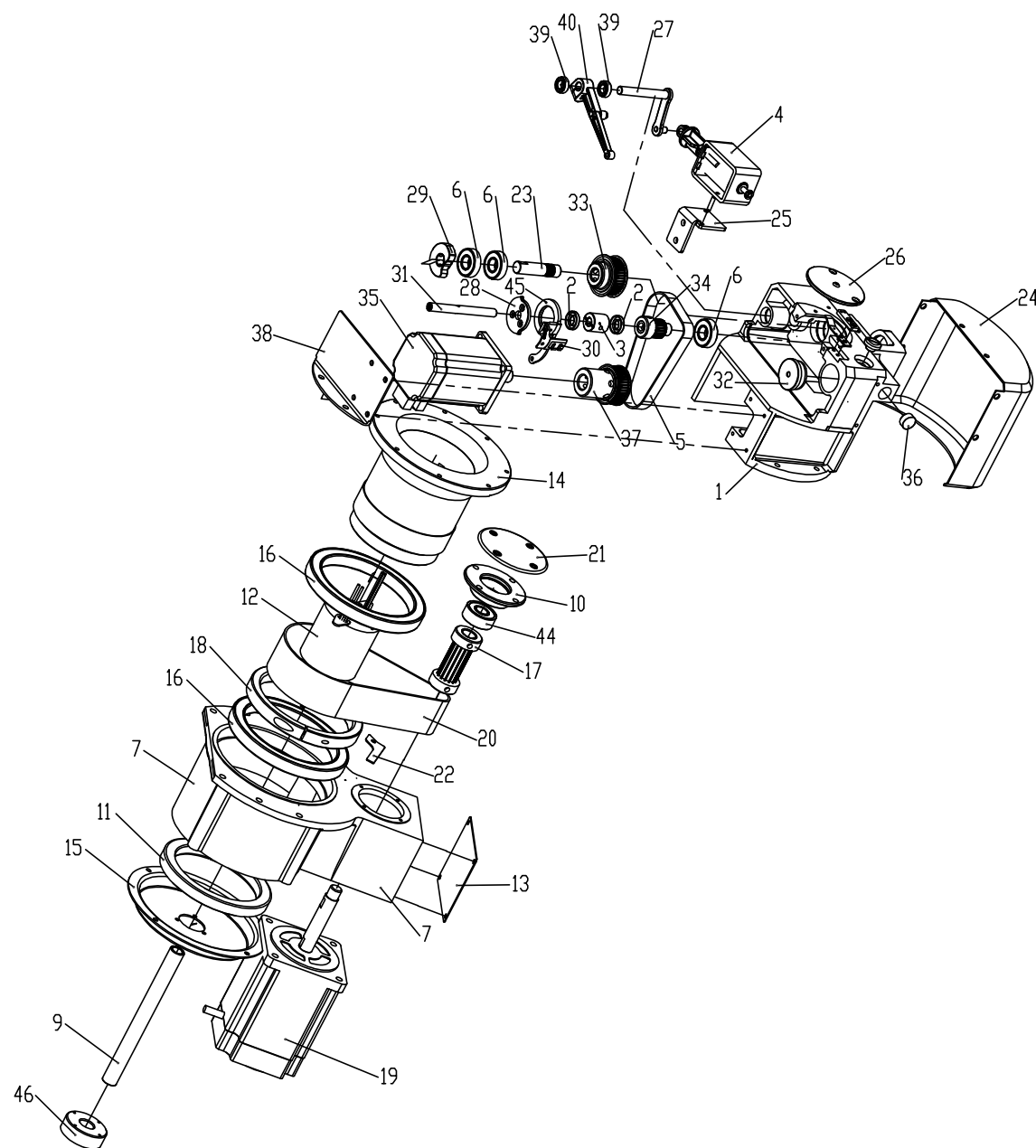
NO.	PART.NO.	名称	DESCRIPTION	Qty
1	PTH360-3	上同步轮	THE SYNCHRONOUS WHEEL	1
2	PTH360-64	锁紧挡圈	LOCKING RING	1
3	61920	轴承	BEARING	3
4	PTS360-201	过线管	THE PIPE THREAD	1
5	H360-5M-460-40	460同步带	460 SYNCHRONOUS BELT	1
6	PTH360-23	轴承座	BEARING	1
7	PTH360-61	同步轮	SYNCHRONOUS WHEEL	1
8	P360S下旋转马达	私服马达	PRIVATE SERVERS MOTOR	1
9	K360-100-2	上机壳轴承座	CHASSIS ON THE BEARING SEAT	1
10	PTH360-26	螺纹圈	THREADED RING	1
11	6201	轴承	BEARING	1

NO.	PART.NO.	名称	DESCRIPTION	Qty

NO.	PART.NO.	名称	DESCRIPTION	Qty

3



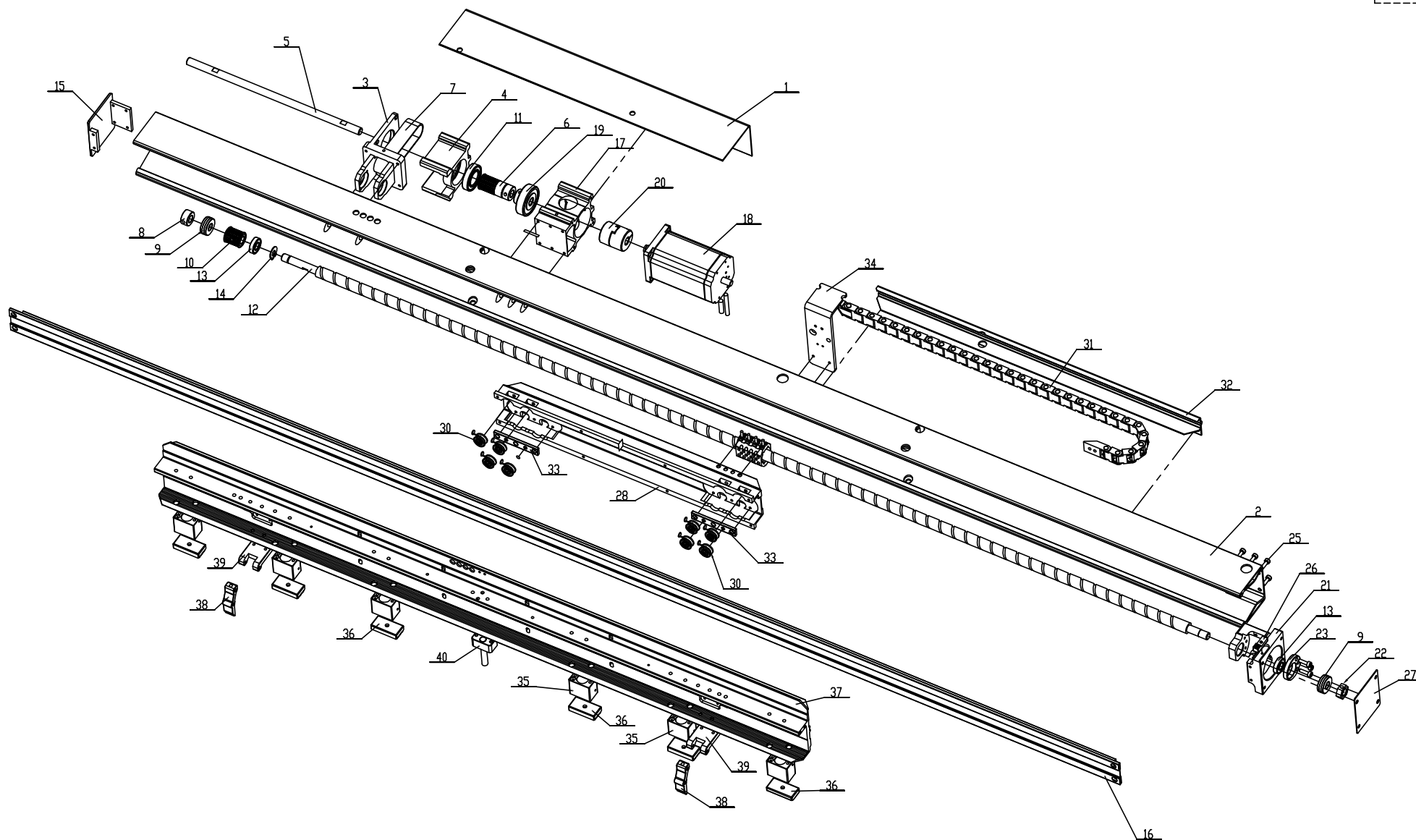


#### 4. 下旋转座 THE ROTARY SEAT

NO.	PART.NO.	名称	DESCRIPTION	Qty
1	PTS912-98	下旋转座	THE ROTARY SEAT	1
2	GC900-26	密封盖	SEALING COVER	2
3	PTS912-100	铜套	COPPER SET OF	1
4	007120电磁铁	电磁铁	ELECTROMAGNET	1
5	PTH360-101-249	同步带	SYNCHRONOUS BELT	1
6	6001	轴承	BEARING	3
7	H360-63	下旋转支架	THE ROTARY BRACKET	1
8	GC913-26	电环环定位块	ELECTRICITY INSIDE POSITIONING BLOCK	1
9	H360-124	线管	LINE PIPE	1
10	GCS913-67	轴承套	BEARING SLEEVE	1
11	GCS913-108	螺纹锁紧圈	THREAD LOCKING RING	1
12	GCS913-9-8	电环环	ELECTRICITY INSIDE	1
13	TPS913-44	盖板	COVER PLATE	1
14	PTH360-62	下旋同步轮	BACKSPIN SYNCHRONOUS WHEEL	1
15	GCS913-107	下盖板	UNDER THE COVER	1
16	61820	轴承	BEARING	2
17	PTH360-61	同步轮	SYNCHRONOUS WHEEL	1
18	PTH360-64	锁紧挡圈	LOCKING RING	1
19	PTS下旋转马达-86	私服马达	PRIVATE SERVERS MOTOR	1
20	PTH360-65-5M-435	同步带	SYNCHRONOUS BELT	1
21	PTH360-66	盖板	COVER PLATE	1
22	PTH360-67	感应器压板	SENSOR CLAMP	1
23	GCS913-113-5M	轴	SHAFT	1
24	PTH360-104	前盖	FRONT COVER	1
25	PTS912-90X	电磁铁支架	ELECTROMAGNET STENTS	1
26	GCS913-8-1.6	针扣板	NEEDLE GUSSET PLATE	1
27	PTH360-107	凸轮曲柄	THE CRANK CAM	1
28	GCS913-76	挡片	BLOCK SLICE	1
29	GCS913-114	凸轮	CAM	1
30	AE-10060PS-43	动刀	THE KNIFE	1
31	H360-106-2	旋梭轴	HOOK SHAFT	1
32	PTS912-60	皮塞	SKIN PLUG	1
33	H360-108-1	同步轮	SYNCHRONOUS WHEEL	1
34	H360-913-201	同步轮	SYNCHRONOUS WHEEL	1
35	EX4.0-400W伺服马	伺服马达	PRIVATE SERVERS MOTOR	1
36	橡胶塞	橡皮塞	RUBBER PLUG	1
37	H360-108-2	同步轮	SYNCHRONOUS WHEEL	1
38	PTH360-103	前盖板	FRONT COVER	1
39	628Z	628轴承	628 BEARING	2
40	GCS913-78	摆杆	SWINGING ROD	1

NO.	PART.NO.	名称	DESCRIPTION	Qty
41	AE-10060PS-42	定刀	CONSTANT DAO	1
42	GC900-17X	定刀压板	SET THE KNIFE HOLDER	1
43	405560	漏油螺钉	THE OIL SCREW	1
44	6201	轴承	BEARING	1
45	GC900-15	动刀架	MOVING HEAD	1
46	H360-90S	线管套	LINE PIPE SLEEVE	1

NO.	PART.NO.	名称	DESCRIPTION	Qty
				4

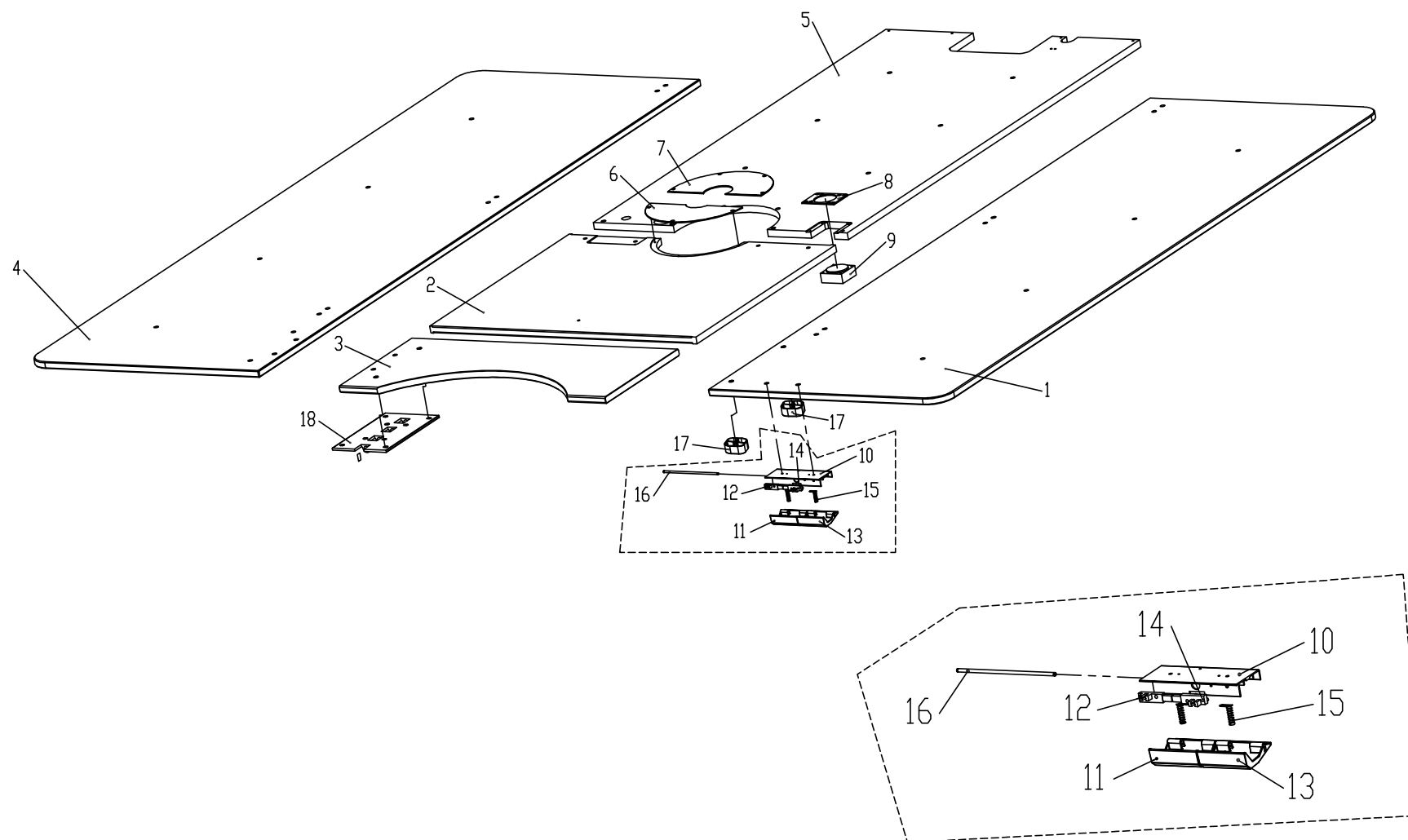


## 5. X横梁组合 X BEAM COMBINATION

NO.	PART.NO.	名称	DESCRIPTION	Qty
1	GC900-70	护盖	FENDER	1
2	H360-118	固定横梁	FIXED BEAMS	1
3	A8-120C-7	同步轮支架	SYNCHRONOUS WHEEL BRACKET	1
4	A8-120C-96X	同步轮轴承座	SYNCHRONOUS WHEEL BEARING	1
5	GC900-69	X传动轴	THE X DRIVE SHAFT	1
6	A8-120C-95-1	同步轮	SYNCHRONOUS WHEEL	1
7	GC812-93-3M-210x20	同步带	SYNCHRONOUS BELT	1
8	103270	Φ10挡圈	Φ 10 RETAINING RING	1
9	G8-58-51100	平面轴承	PLANE BEARING	2
10	A8-120C-94	同步轮	SYNCHRONOUS WHEEL	1
11	6904	轴承	BEARING	1
12	GC900-43	X丝杆	X SCREW	1
13	6900	轴承	BEARING	2
14	GB-T894.1-10	Φ10外卡簧	Φ 10 WILD SPRING	1
15	A8-120C-12	护盖	FENDER	1
16	A8-130C-20	横梁盖板条	ARTICLE BEAM PLATE	1
17	A8-120C-97X	轴承支架	BEARING SUPPORT	1
18	12080B-X马达	X传动电机	THE X DRIVE MOTOR	1
19	6004T	带卡轴承	TAKE CARD BEARING	1
20	G8-59-30x35-10	Φ10连轴器	Φ 10 SHAFTS	1
21	GC900-121	轴承支架	BEARING SUPPORT	1
22	GC900-67	丝杆螺母	SCREW THE NUT	1
23	GC900-68	偏心轴承套	ECCENTRIC BEARING SLEEVE	1
24	GB-T70.1-M4X14	内六角螺钉	SOCKET HEAD CAP SCREW	3
25	GB-T70.1-M4X12	内六角螺钉	SOCKET HEAD CAP SCREW	6
26	8x7.5传感器	传感器	THE SENSOR	1
27	GC900-71	盖板	COVER PLATE	1
28	GC812-2-900	滚轮支架	ROLLER BRACKET	1
29	GC95150-2X	丝杆螺母	SCREW THE NUT	1
30	AE-7030-50	滚轮轴承	ROLLER BEARING	8
31	G8-1010TOLA拖链	X拖链	X DRAG CHAIN	1
32	GC900-41	拖链护盖	DRAG CHAIN COVER	1
33	A8-120C-4	滚轮垫块	ROLLER BLOCK	2
34	PTS912-51	拖链支架	DRAG CHAIN BRACKET	1
35	C100-16X10T	气缸	CYLINDER	6
36	C100-10	压块	BRIQUETTING	6
37	C100-9	移动横梁	MOVING BEAM	1
38	C100-7	压布爪子	PRESSURE CLOTH CLAWS	2
39	C100-3	压布支架	PRESSURE CLOTH STENTS	2
40	C100-5X	定位块	LOCATING PIECE	1

NO.	PART.NO.	名称	DESCRIPTION	Qty

NO.	PART.NO.	名称	DESCRIPTION	Qty
				5



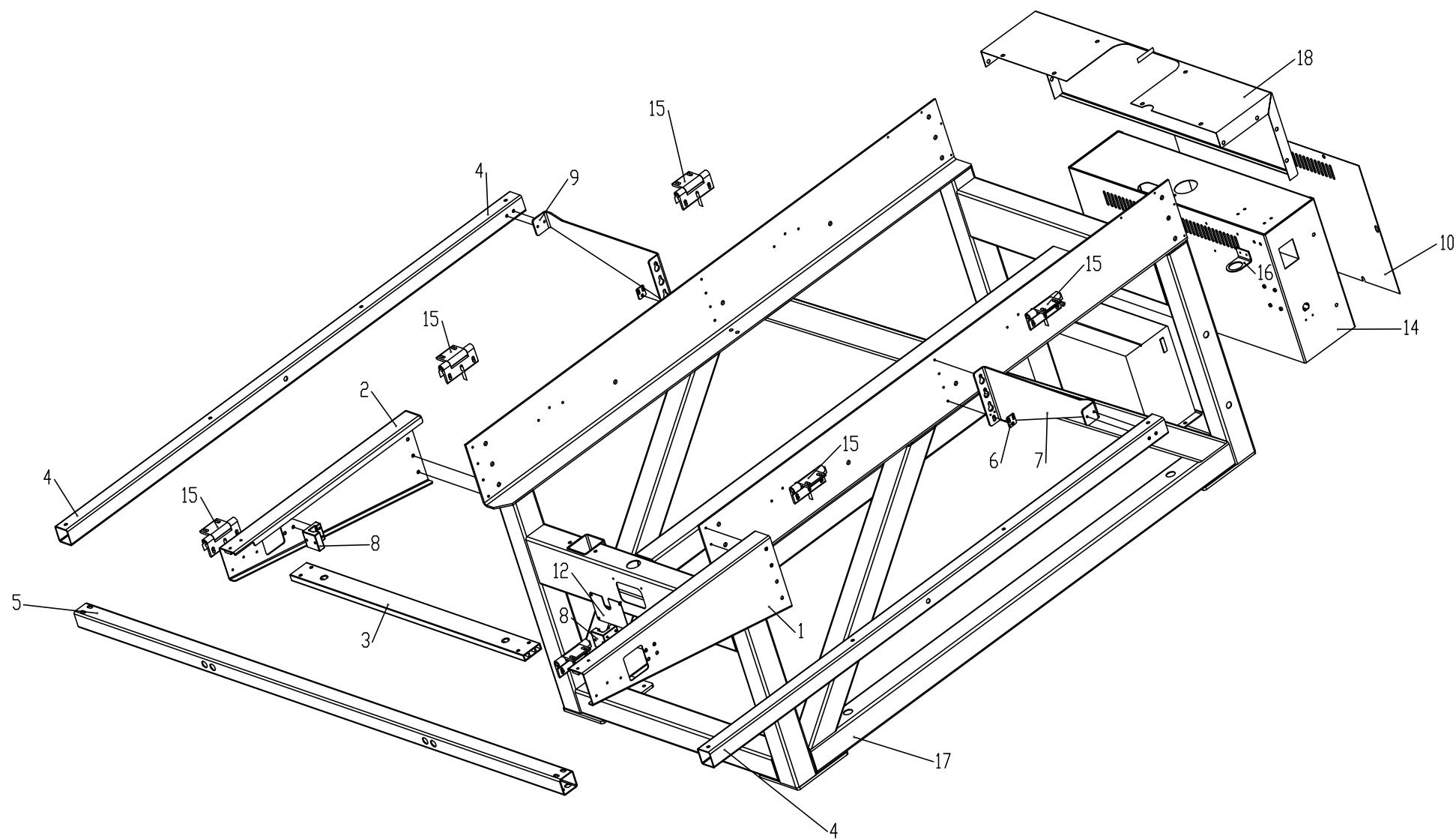
## 6. 台板部分 COUNTER PART

NO.	PART.NO.	名称	DESCRIPTION	Qty
1	H360-109	右台板	THE RIGHT COUNTER	1
2	H360-103	前台板	BEFORE THE BEDPLATE	1
3	H360-105	前台板小	BEFORE THE BEDPLATE SMALL PLATE	1
4	H360-111	左台板	LEFT BEDPLATE	1
5	H360-100	机腹板	MACHINE WEB	1
6	H360-104	半圆盘	HALF A DISC	1
7	H360-101	半圆盘	HALF A DISC	1
8	A9-150-28X	识别器盖板	RECOGNIZER COVER PLATE	1
9	星火RFID-1-1	模板识别器	THE TEMPLATE IDENTIFIER	1
10	GC900-77X	手动开关盒支架	MANUAL SWITCH BOX OF STENTS	1
11	GC900-77X-2	起动开关	STARTING SWITCH	1
12	长光电开关	光电开关	PHOTOELECTRIC SWITCH	1
13	GC900-77X-1	关停开关	SHUT DOWN THE SWITCH	1
14	长光电开关-1	光电开关	PHOTOELECTRIC SWITCH	1
15	手动开关压簧	压簧	COMPRESSION SPRING	2
16	GC900-78X	手动开关轴	MANUAL SWITCH SHAFT	1
17	GC812-119	前台板垫块	BEFORE THE PLATEN BLOCK	2
18	AE-12080B-354C	长铰链合页	LONG HINGE HINGE	1

NO.	PART.NO.	名称	DESCRIPTION	Qty

NO.	PART.NO.	名称	DESCRIPTION	Qty

6



## 7. 机架部分 FRAME PART

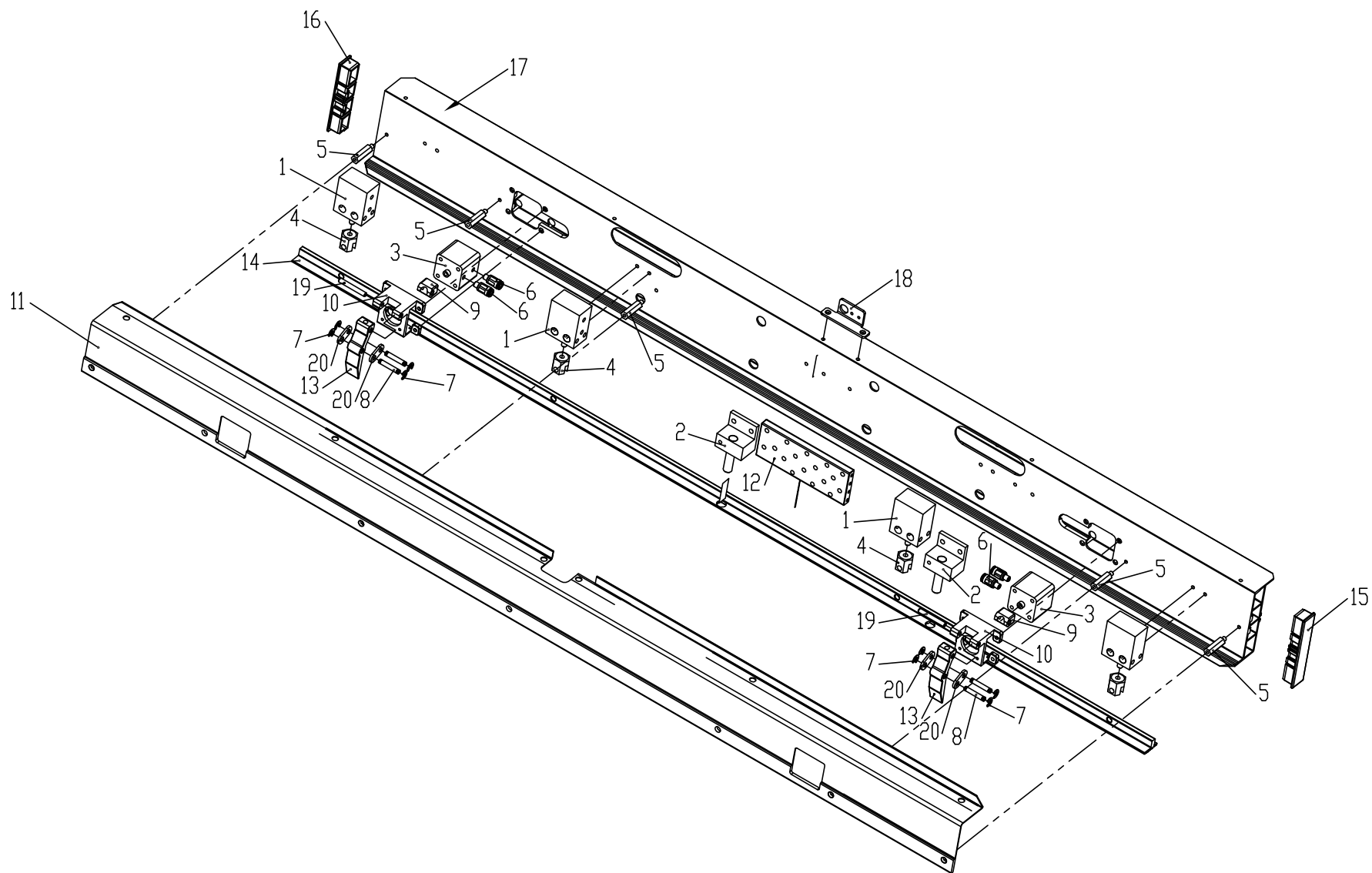
NO.	PART.NO.	名称	DESCRIPTION	Qty
1	H360-107	右三角臂	RIGHT TRIANGLE ARM	1
2	H360-106	左三角臂	THE LEFT ARM TRIANGLE	1
3	H360-110	连接板	CONNECTION PLATE	1
4	GC900-112	左右台板支架梁	AROUND THE COUNTER SUPPORT BEAM	2
5	H360-112	前横梁条	BEFORE THE BEAM BAR	1
6	ZJ-3	压板	CLAMP	2
7	H360-50A	支架	STENTS	1
8	H360-114	连接臂	THE CONNECTION ARM	2
9	H360-50B	支架	STENTS	1
10	H360-119	电脑箱盖板	COMPUTER BOX COVER PLATE	1
11	大豪电控-5-1	电控系统	ELECTRIC CONTROL SYSTEM	1
12	H360-125	前小盖板	BEFORE THE SMALL PLATE	1
13	伺服电箱-1	私服电箱	PRIVATE SERVERS ELECTRIC BOX1	1
14	H360-90S电箱	电控箱	ELECTRIC CABINET	1
15	GC900铰链	铰链合页	HINGE HINGE	6
16	H360-121	支架	STENTS	1
17	H360-90最新机架-机架	机架	RACK	1
18	PTH360-55A	后盖	REAR COVER	1

NO.	PART.NO.	名称	DESCRIPTION	Qty

NO.	PART.NO.	名称	DESCRIPTION	Qty

1





### 8. 老款移动横梁部分 OLD MOBILE BEAM SECTION

NO.	PART.NO.	名称	DESCRIPTION	Qty
1	AE-1208-MD-16X10S	气缸	CYLINDER	4
2	AE-12080-108	定位块	LOCATING PIECE	2
3	AE-8050PS-ACQ-16X10	爪块气缸	CLAW PIECES OF CYLINDER	2
4	AE-12080-15	连接头	CONNECT THE HEAD	4
5	AE-9050-49	六角螺栓	HEXAGON STUD	5
6	608310	气管连接头	TRACHEAL CONNECTOR	4
7	GB-T896-3.5	外卡簧	A WILD CARD SPRING	8
8	A8-17	卡销轴	CARD PIN	4
9	A8-8	连接头	CONNECT THE HEAD	2
10	A8-120C-56	爪块支架	CLAW PIECE OF STENTS	2
11	A8-130C-24	防护盖	PROTECTIVE COVER	1
12	A8-120C-57	气阀板	THE VALVE PLATE	1
13	A3-80-39X	爪块	CLAW PIECES	2
14	A8-130C-29	模板压条	TEMPLATE LAYERING	1
15	A8-120C-5B	塞头	PLUG HEAD	1
16	A8-120C-5A	堵头	PLUG	1
17	A8-130C-19	移动横梁	MOVING BEAM	1
18	A8-120C-51	拖链支架	DRAG CHAIN BRACKET	1
19	A8-18	销轴	PIN	2
20	A8-10	连接片	CONNECTION PIECE	4

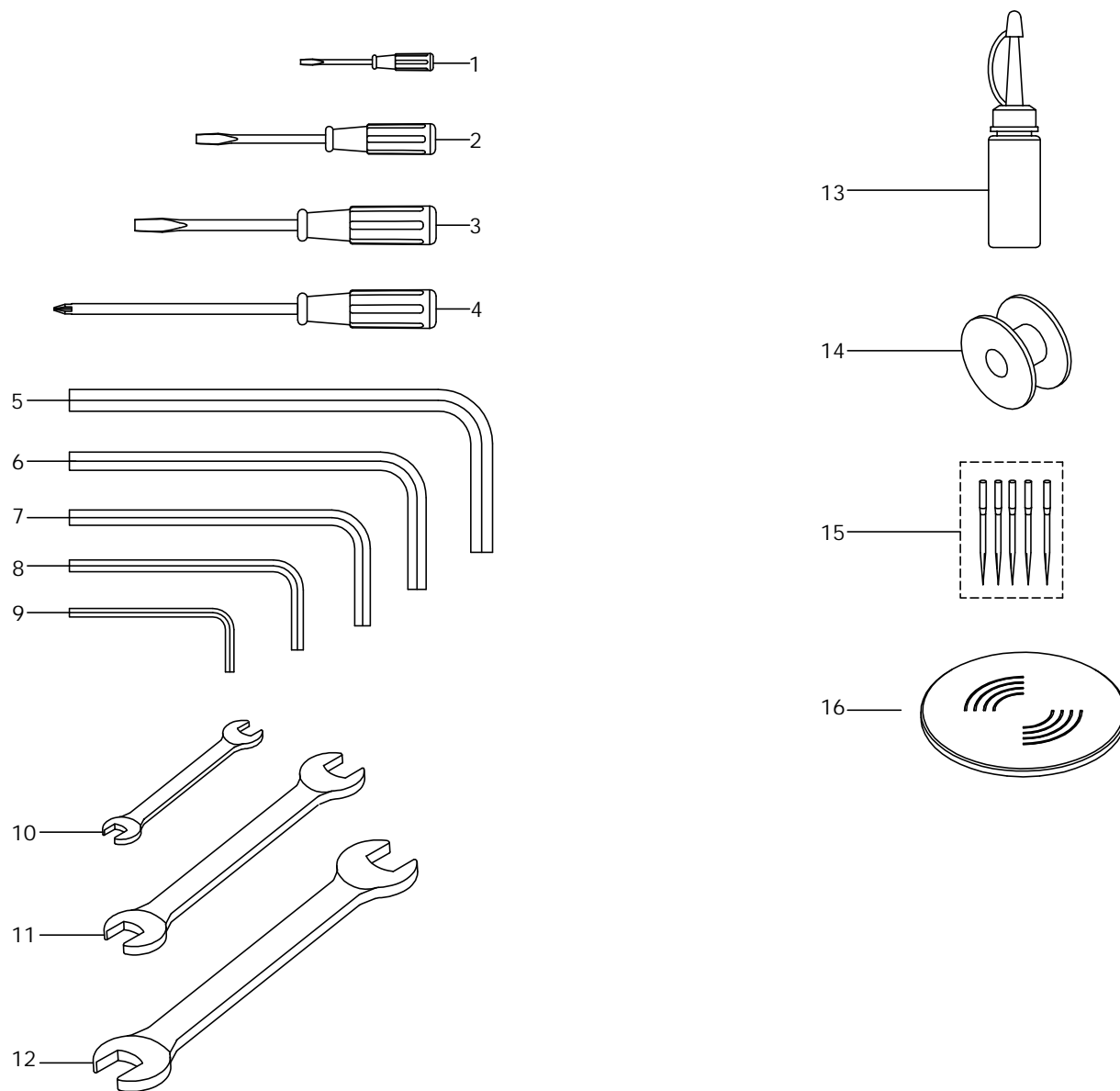
NO.	PART.NO.	名称	DESCRIPTION	Qty

NO.	PART.NO.	名称	DESCRIPTION	Qty

8

9. 附件部份 THE ATTACHMENT PART

9



9. 附件部份 THE ATTACHMENT PART

NO.	PART.NO.	名称	DESCRIPTION	Qty	NO.	PART.NO.	名称	DESCRIPTION	Qty	NO.	PART.NO.	名称	DESCRIPTION	Qty
1	GJ-LSD-01	一字螺丝刀	SCREWDRIVER	1										
2	GJ-LSD-02	一字螺丝刀	SCREWDRIVER	1										
3	GJ-LSD-03	一字螺丝刀	SCREWDRIVER	1										
4	GJ-LSD-04-X	十字头螺丝刀	SCREWDRIVER	1										
5	SCCG00590	内六角扳手 5	ALLEN WRENCH	1										
6	SCCG00580	内六角扳手 4	ALLEN WRENCH	1										
7	GSCCG00570	内六角扳手 3	ALLEN WRENCH	1										
8	GJ-LJBS-2.5	内六角扳手 2.5	ALLEN WRENCH	1										
9	GJ-LJBS-2	内六角扳手 2	ALLEN WRENCH	1										
10	CH00030	开口扳手 7-8	OPEN-END WRENCH	1										
11	CH00220	开口板手 9-10	OPEN-END WRENCH	1										
12	CH00010	开口板手 11-14	OPEN-END WRENCH	1										
13	116260	加油壶	OIL CAN	1										
14	AE-000-1.7	梭芯	BOBBIN	4										
15	DPX5	机针11#	NEEDLE 11#	5										
16	AE-00011	模板感应芯片	FORMWORK SENSOR	20										



高林股份有限公司  
KAULIN MFG. CO., LTD.

由於對產品的改良及更新，本產品使用說明書中與零件圖之產品及外觀的修改恕不事先通知！  
The specification and/or appearances of the equipment described in this instruction book & parts list are subject to change because of modification which will without previous notice.  
JSL-24AK33.DEC.2024