

SIRUBA

零件圖

PARTS LIST

■ ASL-PSM101



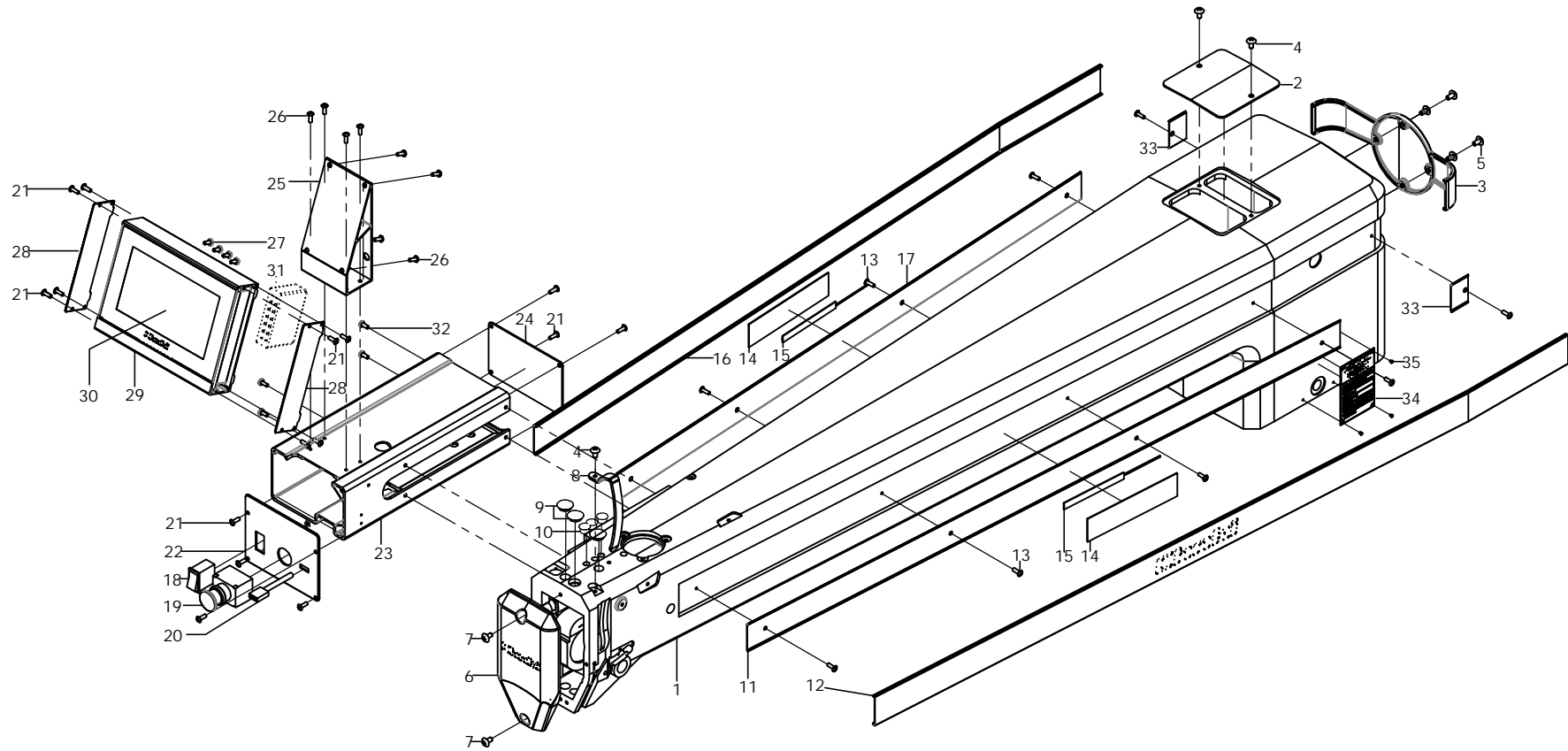
目录部分

CONTENTS

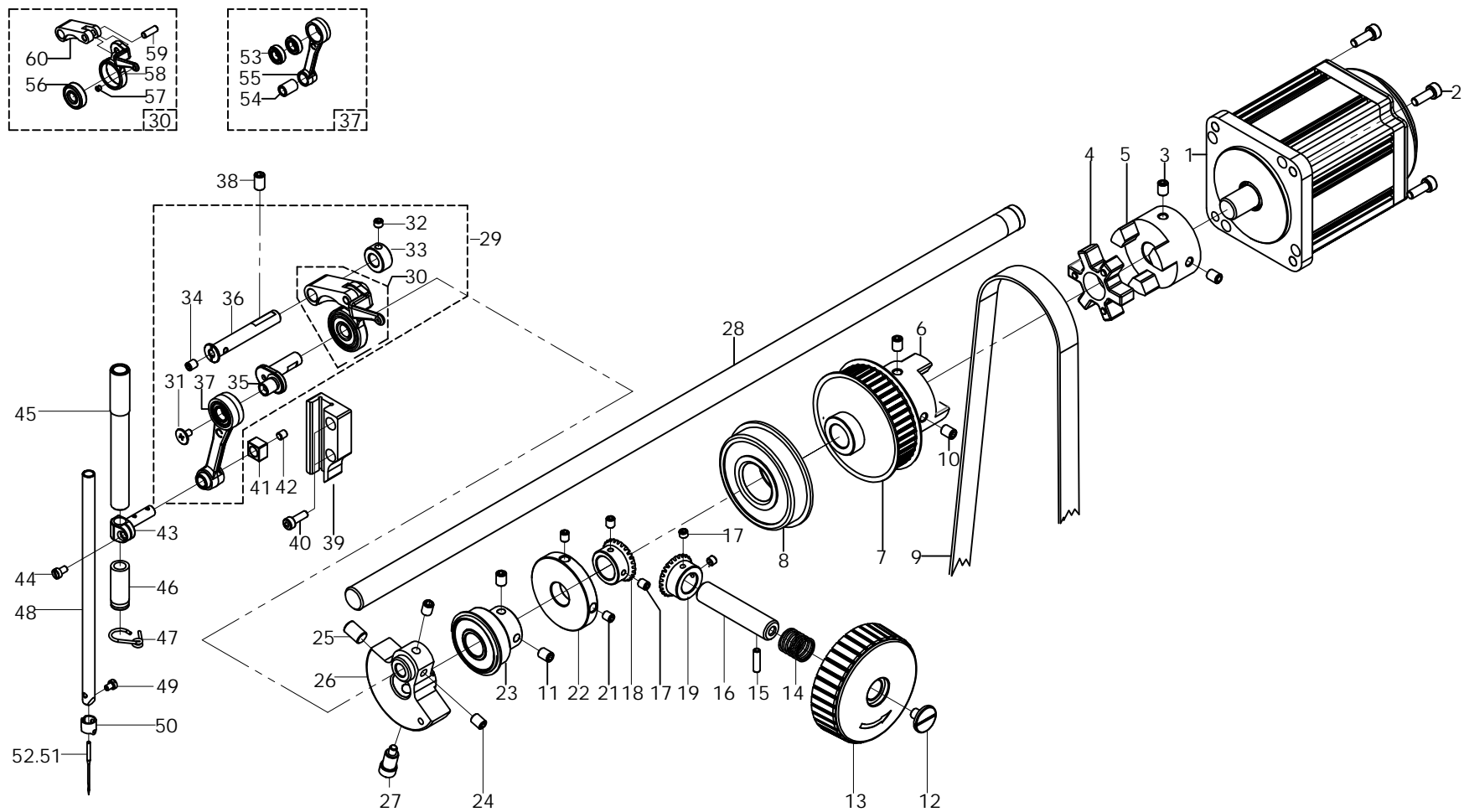
1 界面操作和机头外表部份	1
2 上轴传动部份	3
3 下轴传动部份	5
4 中压脚及辅助压脚部份	7
5 过线部份	9
6 卷线、扫线部份	11
7 机架底座部份	13
8 Y轴驱动部份	15
9 X轴驱动部份	17
10 X轴移动部份	19
11 台板面部份	21
12 气动部份 / 画笔部份 (选购件) 部份	23
13 电控箱部份	25
14 附件部份	27

1 MACHINE BODY COMPONENTS	1
2 UPPER SHAFT COMPONENTS	3
3 LOWER SHAFT COMPONENTS	5
4 PRESSER FOOT COMPONENTS	7
5 THREADING COMPONENTS	9
6 BOBBIN WINDER & THREAD WIPER COMPONENTS	11
7 FRAME COMPONENTS	13
8 Y CHAIN DRIVE COMPONENTS	15
9 X TRACK COMPONENTS	17
10 X MOVEMENT COMPONENTS	19
11 TABLE COMPONENTS	21
12 COMPONENTS / COUNTERDRAW (OPTIONAL) COMPONENTS	23
13 PNEUMATIC COMPONENTS	25
14 ACCESSORY PARTS COMPONENTS	27

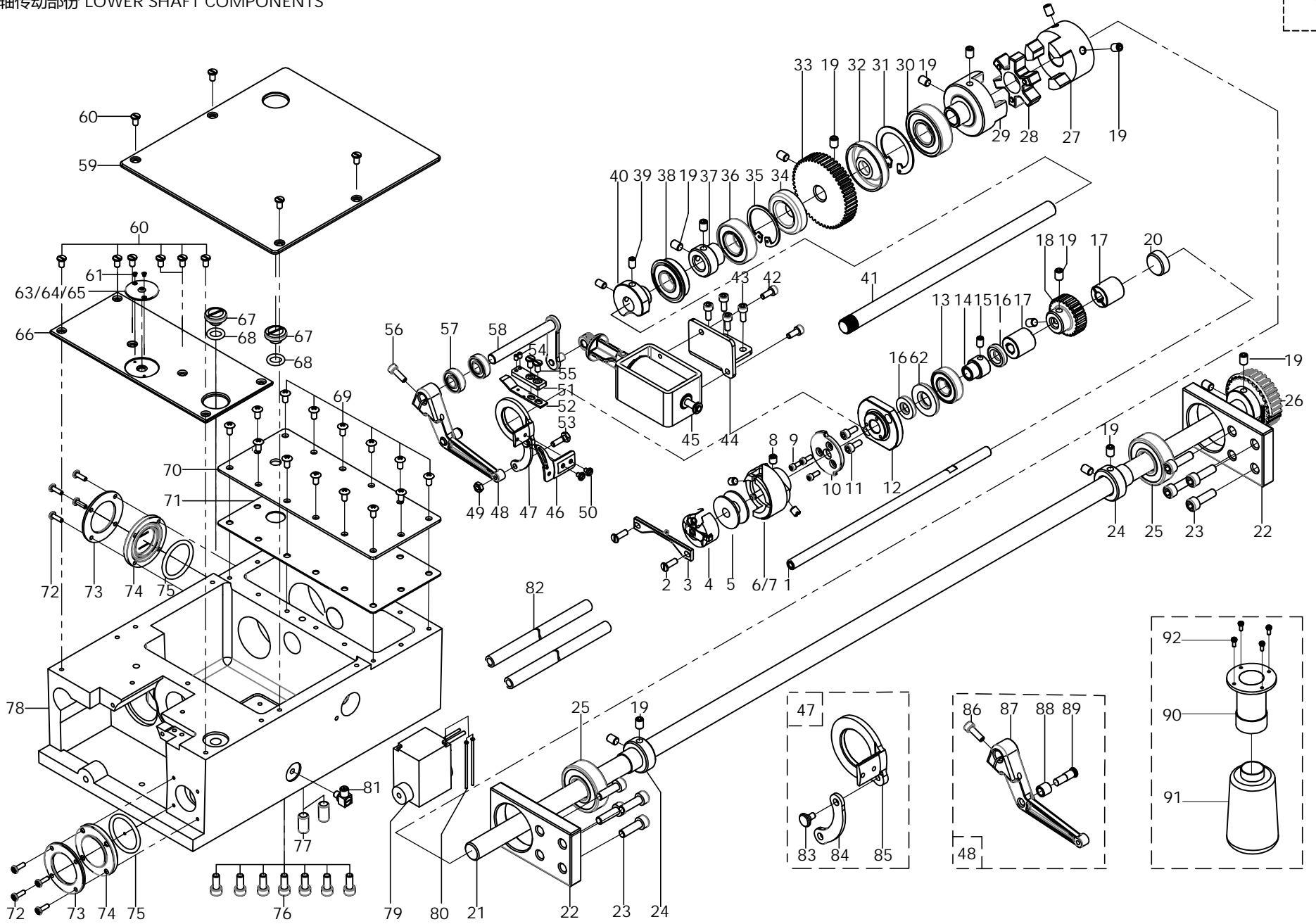
1. 界面操作和机头外表部份 MACHINE BODY COMPONENTS



2.上轴传动部份 UPPER SHAFT COMPONENTS



3. 下轴传动部分 LOWER SHAFT COMPONENTS



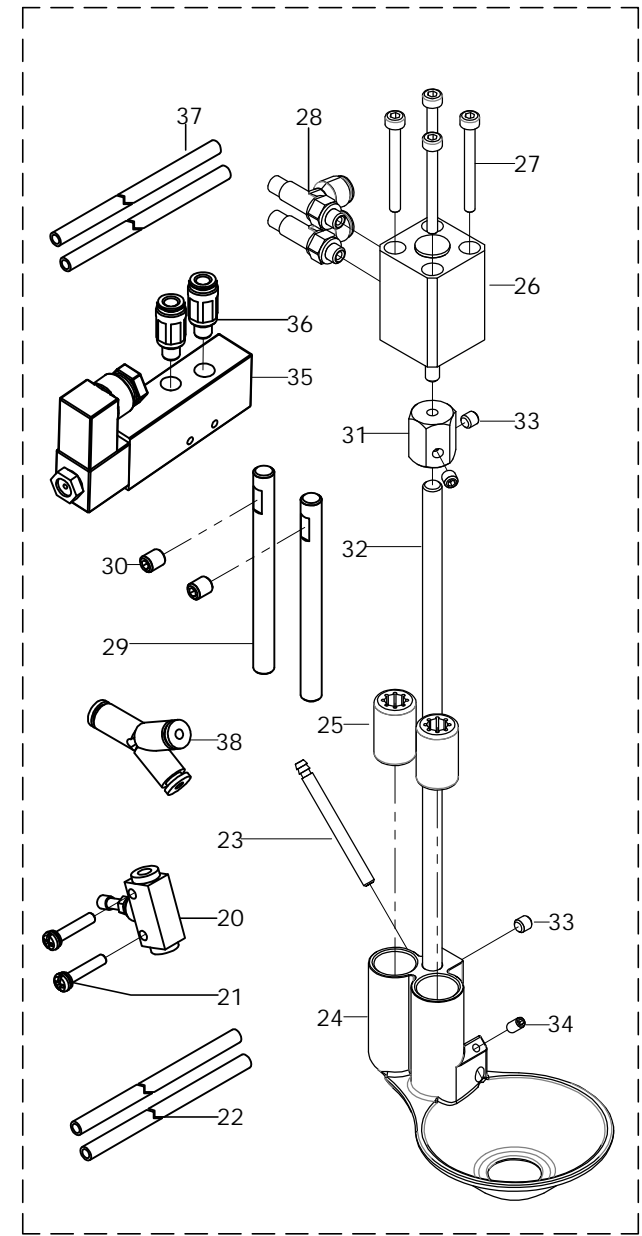
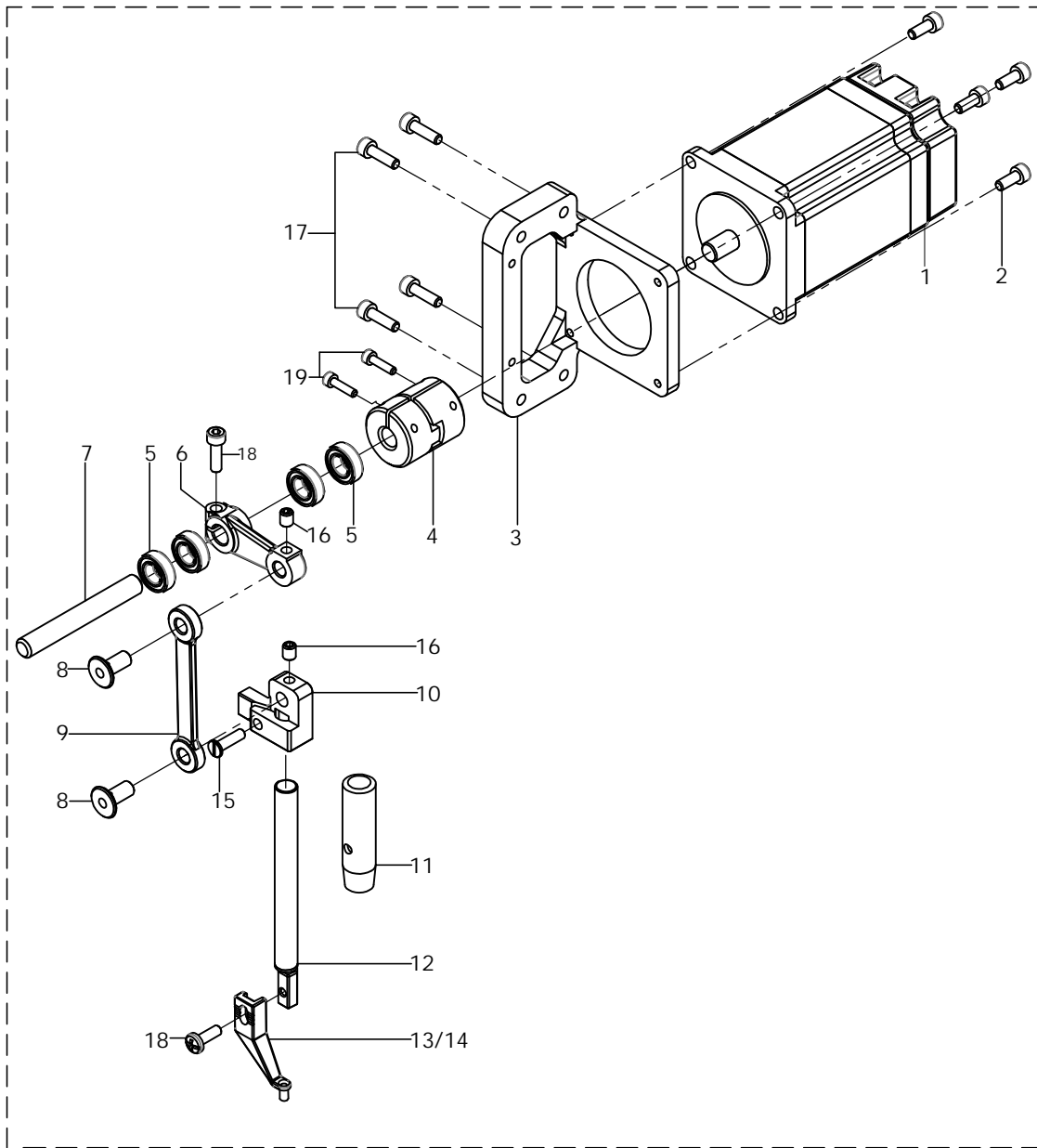
3. 下轴传动部份 LOWER SHAFT COMPONENTS

REF.NO.	PART.NO.	名称	DESCRIPTION	Qty
1	GC900-9	下轴	LOWER SHAFT	1
2	SM-M4T-L12	螺钉	SCREW	2
3	AE10060PS-12	梭床挡片	BOBBIN DAM BOARD	1
4	MS-2-2.0	2.0倍大梭壳	HOOK S	1
5	MS-3-2.0	2.0倍大梭心	HOOK S	1
6	KHS20-RMP	2.0倍大旋梭	HOOK S	1
7	KHS20-RMS	2.0倍大旋梭	HOOK S	1
8	SM111-555	旋梭螺钉	SCREW	3
9	M3-L12	内六角螺钉	SCREW	3
10	AE10060PS-36	动刀支架挡片	HOLDER DAM BOARD	1
11	M4-L12	内六角螺钉	SCREW	2
12	GC900-5	动刀支架轴套	SHAFT SLEEV	1
13	GB6001ZZ	轴承	BEARING	1
14	GC812-93	轴承挡圈	RING WASHER	1
15	M5-L6	内六角螺钉	SCREW	2
16	GB-8X18	油封	SCREW	2
17	GC900-27	轴套	SUPPORTING BLOCK	2
18	GC900-20	齿轮	STATOR OF LOWER	1
19	M6-L8	内六角螺钉	SCREW	16
20	GC900-29	橡胶塞	SUPPORTING BLOCK	1
21	GC500-6	下传动轴		
22	GC900-64	轴承固定架		1
23	M6-L20	内六角螺钉		2
24	GC900-65	轴承挡圈		8
25	GB1203	调心轴承		2
26	GC812-46	下同步带轮		1
27	GC900-28A	连接头A		2
28	102178-28C	橡胶缓冲圈		1
29	GC900-28B	连接头B		1
30	GB6203	轴承	BEARING	1
31	GB-40	内孔卡簧		1
32	GB-12X40	油封		1
33	GC900-19	齿轮	STATOR OF LOWER	1
34	GB-12X35	油封		1
35	GB-35	内孔卡簧	PIN ROLL	1
36	GB6003	轴承	BEARING	1
37	GC900-21	轴承挡圈		1
38	GB6002-NR	带卡轴承	BEARING	1
39	M5-L6	内六角螺钉	SCREW	2
40	GC900-8	切线凸轮		1

REF.NO.	PART.NO.	名称	DESCRIPTION	Qty
41	GC900-9	下驱动轴		1
42	M4-L6	内六角螺钉	SCREW	2
43	M4-L8	内六角螺钉	SCREW	4
44	GC900-4	电磁铁支架		1
45	GC900-110UP	电磁铁组件		1
46	GC900-16	动刀		1
47	GC900-17UP	动刀支架组件		1
48	GC900-8UP	动刀杠杆组件		1
49	GB-M4	螺母		1
50	SM-M3-L4	螺钉	SCREW	2
51	GC900-17	定刀压紧支架		1
52	GC900-18	定刀		1
53	GCS360-64	铰链螺钉	SCREW	1
54	M3L5	内止付螺钉	SCREW	2
55	SM-M4L10	螺钉	SCREW	2
56	M4-L12	内六角螺钉	SCREW	1
57	GB698	轴承	BEARING	2
58	GC900-7	驱动动刀曲柄		2
59	GC900-25	盖板		1
60	SM-M4L7	螺钉	SCREW	10
61	106021	螺钉	SCREW	2
62	GB-8X28-4	油封		1
63	AE10060-44A	1.6针口板		1
64	AE10060-44B	1.8针口板		1
65	AE10060-44C	2.0针口板		1
66	GC900-14	针口板支架		1
67	715101	加油口螺丝盖		2
68	GB-11X2.5	密封圈		2
69	M4-L12	螺钉	SCREW	14
70	GC900-24	齿轮箱盖板		1
71	GC900-23	齿轮箱密封垫		1
72	M3-L15	螺钉		2
73	1900E-64	油窗加强垫		2
74	1900E-63	油窗		2
75	GB-30X2.5	密封圈		2
76	M6-L15	内六角螺钉	SCREW	7
77	GB-8X15	销轴		2
78	GC900-10	齿轮箱		1
79	SMC-VQ21A	电磁阀		1
80	M2-L45	螺钉		2

REF.NO.	PART.NO.	名称	DESCRIPTION	Qty
81	SMC-M5HL-4	气管连接头		1
82	SMC-TUS425	气管		2
83	GCS360-64	铰链柳钉	SCREW	1
84	GCS360-97	连接片		1
85	GC900-17	动刀支架		1
86	M4-L12	内六角螺钉	SCREW	1
87	GC900-8	动刀驱动杠杆		1
88	207290	滚珠		1
89	GCS360-65	铰链柳钉		1
90	1900E-100	油壶支架		1
91	1900E-101	回油壶		1
92	M3L10	螺钉	SCREW	4

4. 中压脚及辅助压脚部份 PRESSER FOOT COMPONENTS



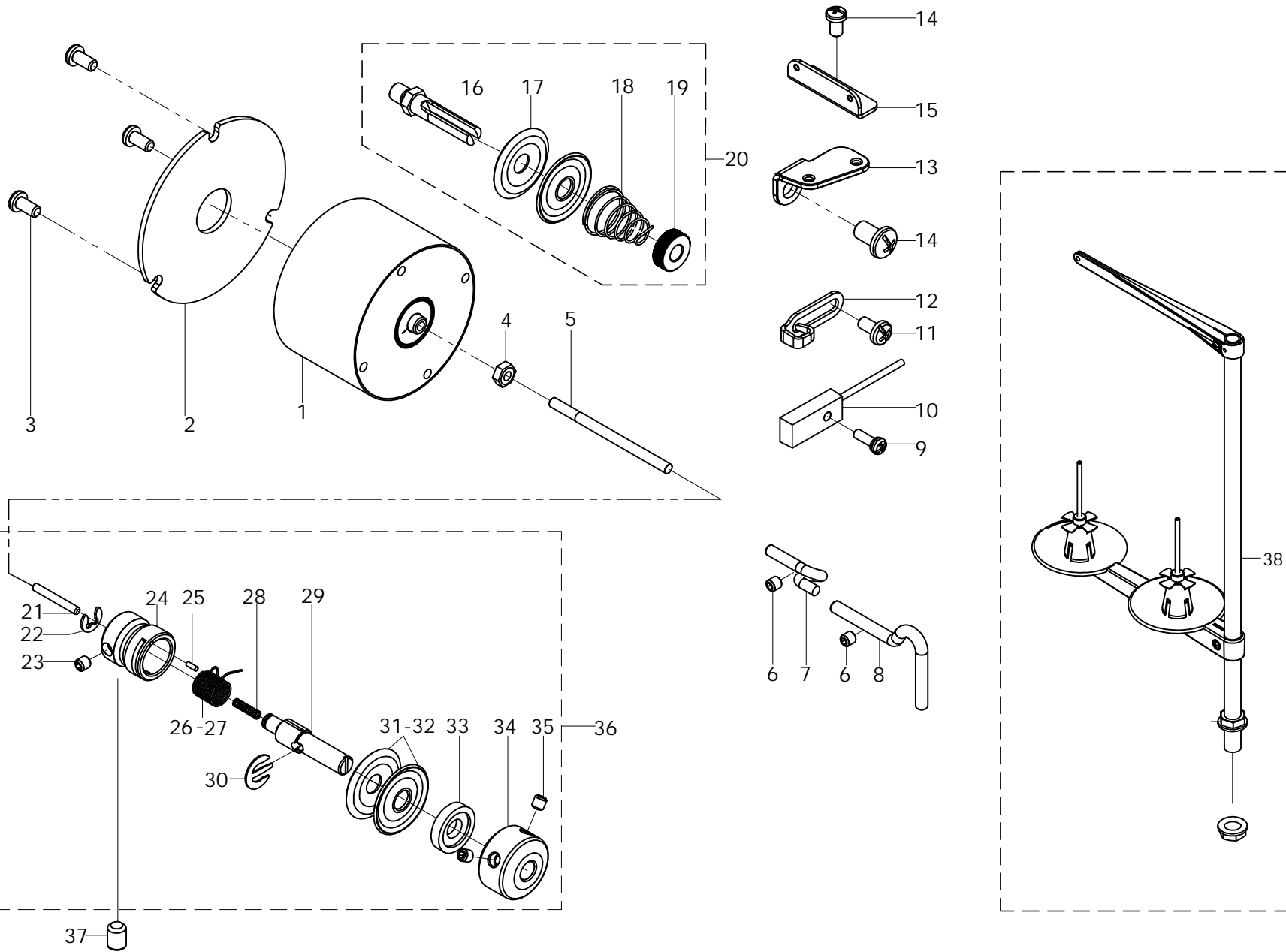
4. 中压脚及辅助压脚部份 PRESSER FOOT COMPONENTS

REF.NO.	PART.NO.	名称	DESCRIPTION	Qty
1	GC900-60Z	中压脚马达	PRESSER FOOT MOTOR	1
2	M4-L8	内六角螺钉	SCREW	4
3	GC900-82	中压脚马达支架	MOTOR BASE	1
4	GB8X25-30	连接头		4
5	GB688	轴承	HINGE BEARING	4
6	BAS-2	驱动行程扛杆	DRIVING ARM ASSY.	1
7	GC900-59	销轴	HINGE PIN	1
8	BAS-9	销轴	HINGE PIN	2
9	BAS-4	连杆	LINK ROD	1
10	BAS-8	滑块连接头	CONNECTING BLOCK	1
11	PT3020-144	压脚杆轴套	BUSHING	1
12	BAS-7	压脚杆	PRESSER ROD	1
13	BAS-1	中压脚 (2.0)	INTERMEDIATE PRESSER 2.0	1
14	BAS-1B	中压脚 (2.5)	INTERMEDIATE PRESSER 2.5	1
15	M4-L12	螺钉	SCREW	1
16	M4-L5	内止付螺钉	SCREW	2
17	M4-L12	内六角螺钉	SCREW	4
18	SM9-64-40-8	螺钉	SCREW	1
19	M3-L12	内六角螺钉	SCREW	2
20	JLF4	节流阀	THROTTLE VALVE	1
21	M4L16	螺钉	SCREW	2
22	PU98A4-25	气管 L=100	AIR TUBE L=100	2
23	12080B-385	吹气嘴	THIN CYLINDER	1
24	GC900-72	辅助压脚	PNEUMATIC PRESSER FOOT	1
25	LM6UU	直线轴承	LINEAR BEARING	2
26	CDA-10X15B	薄型气缸	THIN CYLINDER	1
27	M3-L30	内六角螺钉	SCREW	4
28	APC4-M4	L节流阀M5-4	L SHAPE JOINT	2
29	12080-53	引导轴	GUIDE SHAFT	2
30	M5-L5	内止付螺钉	SCREW	2
31	12080B-325	链接头	THIN CYLINDER	1
32	12080B-326	链接杆	THIN CYLINDER	1
33	M5-L6	内止付螺钉	SCREW	3
34	M4-L6	内止付螺钉	SCREW	1
35	4V-100	气阀座	SOLENOID VALVE	1
36	APC4-01	快速接头 4	QUICK PLUG JOINT 4	2
37	PU98A040025	气管 L=1.8M	AIR TUBE L=1.8M	2
38	APW4	Y型三接头	Y CONNECTING HEAD	1

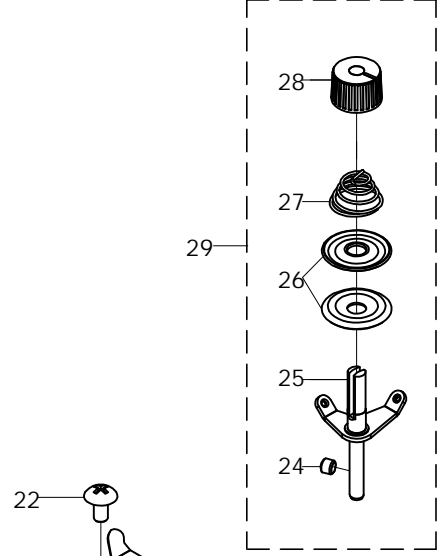
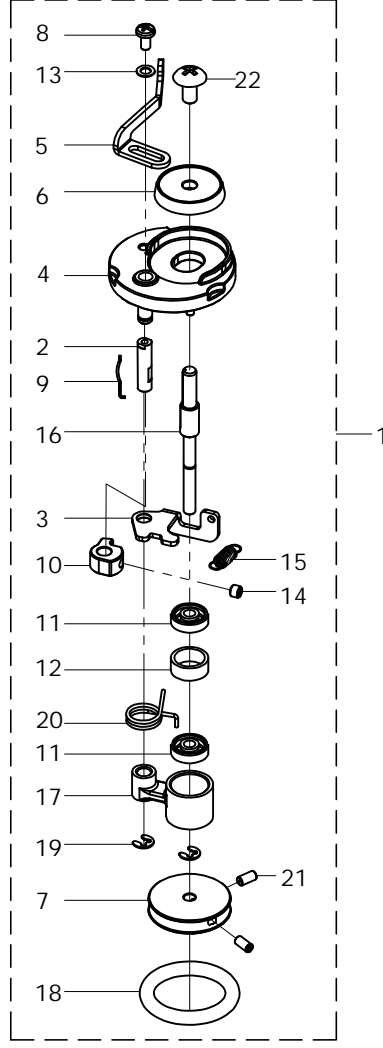
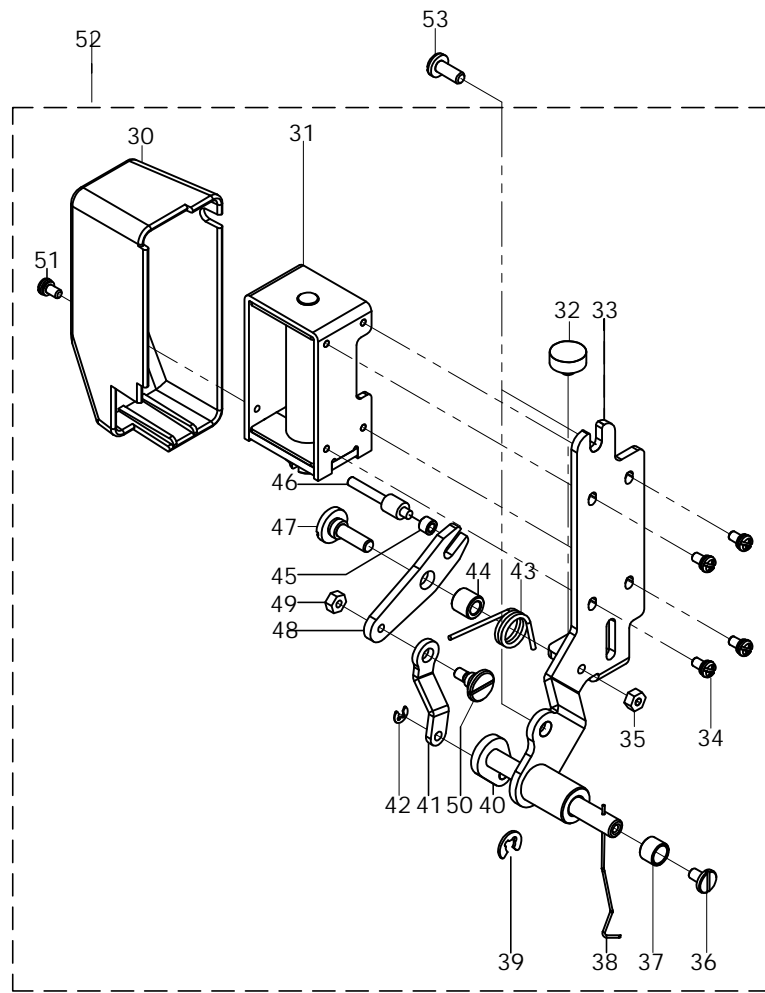
REF.NO.	PART.NO.	名称	DESCRIPTION	Qty
---------	----------	----	-------------	-----

REF.NO.	PART.NO.	名称	DESCRIPTION	Qty
---------	----------	----	-------------	-----

5. 过线部份 THREADING COMPONENTS

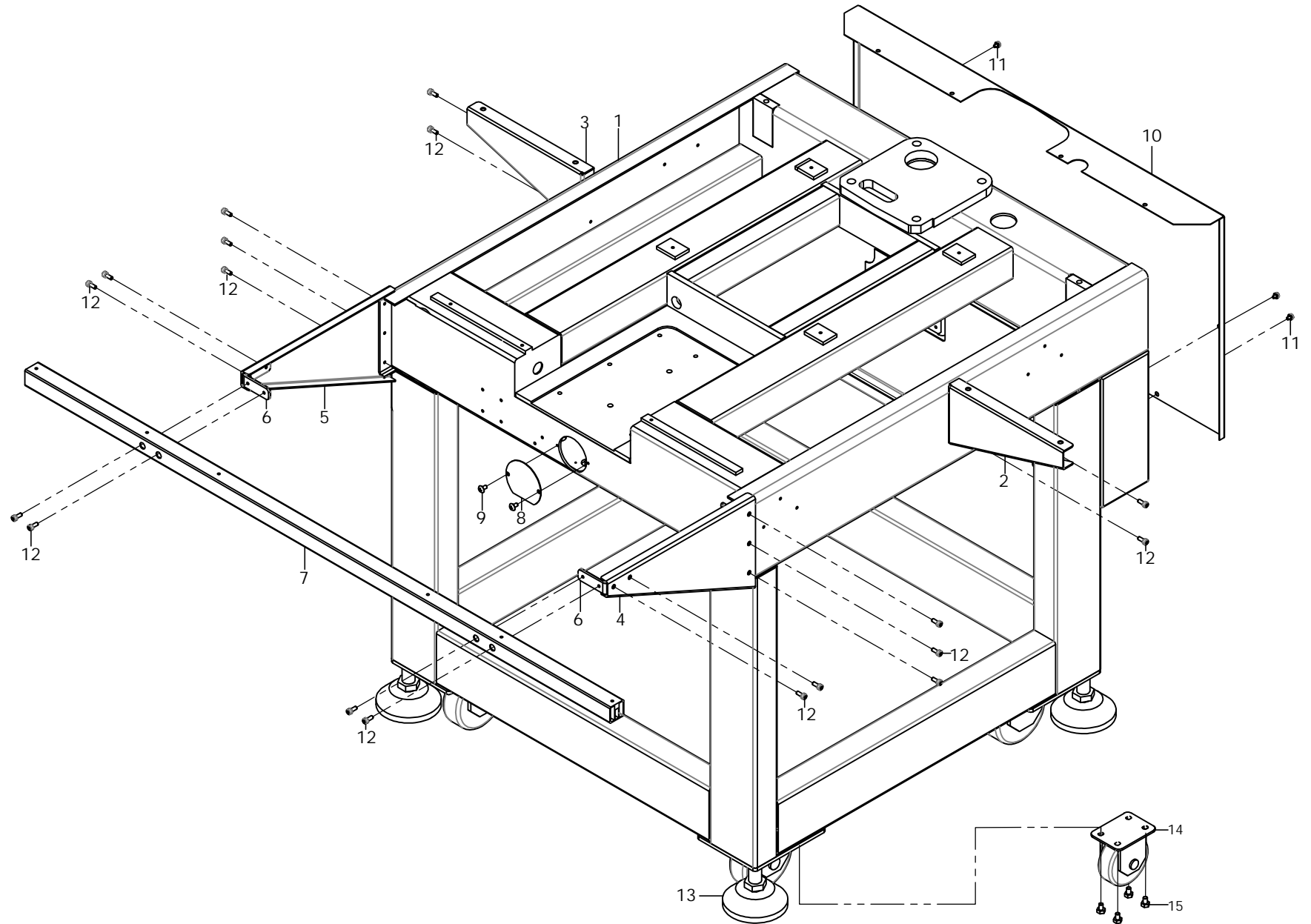


6. 卷线及扫线部份 BOBBIN WINDER & THREAD WIPER COMPONENTS



7. 机架底座部份 FRAME COMPONENTS

13



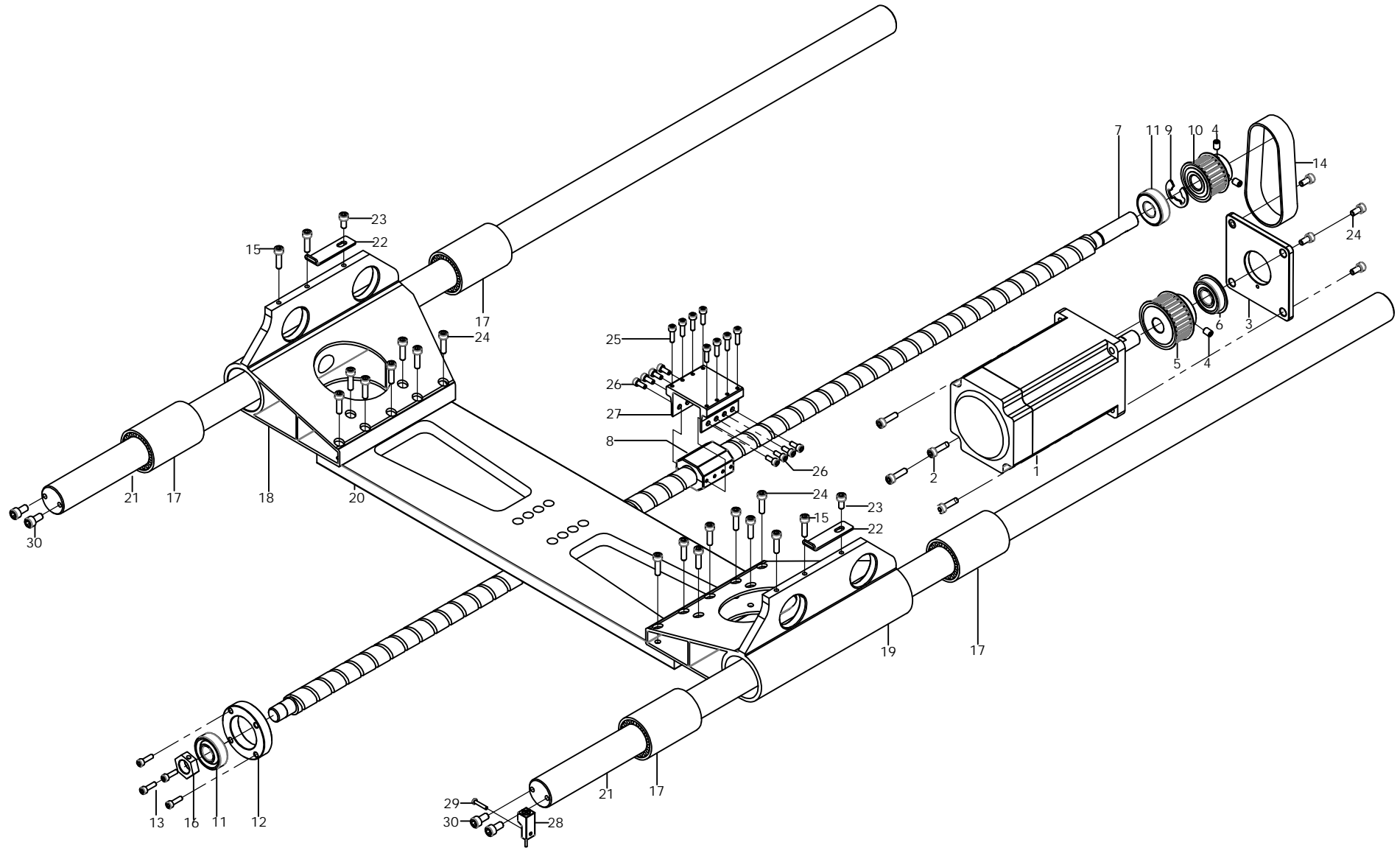
7. 机架底座部份 FRAME COMPONENTS

REF.NO.	PART.NO.	名称	DESCRIPTION	Qty
1	GC500-01	机架底座	TRACK FIXED BEAM L	1
2	GC500-29A	右台板支架		1
3	GC500-28B	左台板支架		1
4	GC500-27A	前台板右支架		1
5	GC500-24B	前台板左支架		1
6	GC500-26	前横梁连接片		2
7	GC500-25	前支架加强条		1
8	GC500-31	盖板		1
9	M5-10	内六角螺钉		2
10	GC500-23	电箱盖板		1
11	M4-L8	螺钉		5
12	M5-L12	内六角螺钉		18
13	AE12080-104	调节脚盆	ADJUSTER	4
14	JL-12080-3.5	脚轮3.5"	TRUNDLE 3.5"	4
15	M8-L12	外六角螺钉	SCREW M8X12	16

REF.NO.	PART.NO.	名称	DESCRIPTION	Qty
---------	----------	----	-------------	-----

REF.NO.	PART.NO.	名称	DESCRIPTION	Qty
---------	----------	----	-------------	-----

8. Y轴驱动部份 Y CHAIN DRIVE COMPONENTS

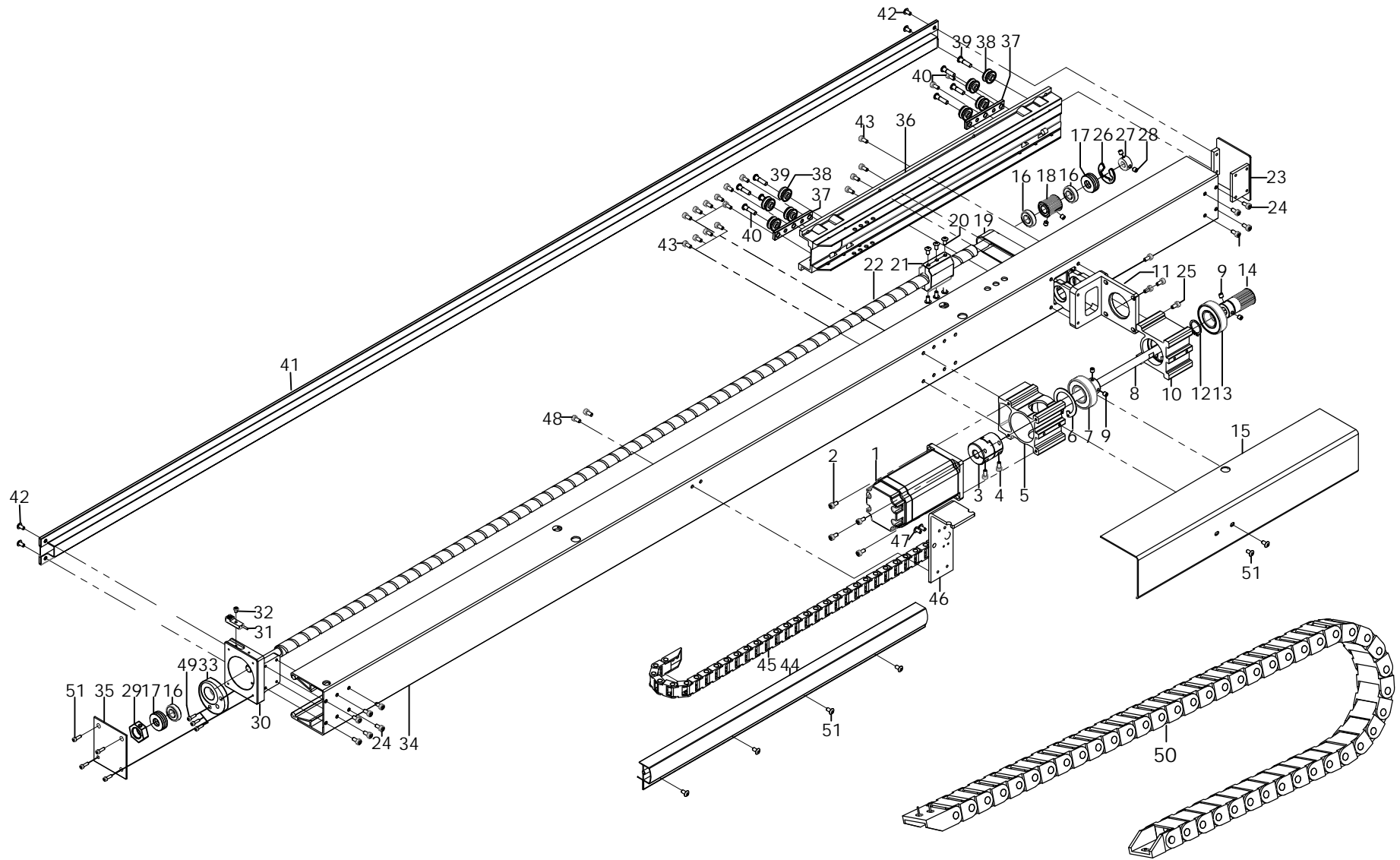


8. Y轴驱动部份 Y CHAIN DRIVE COMPONENTS

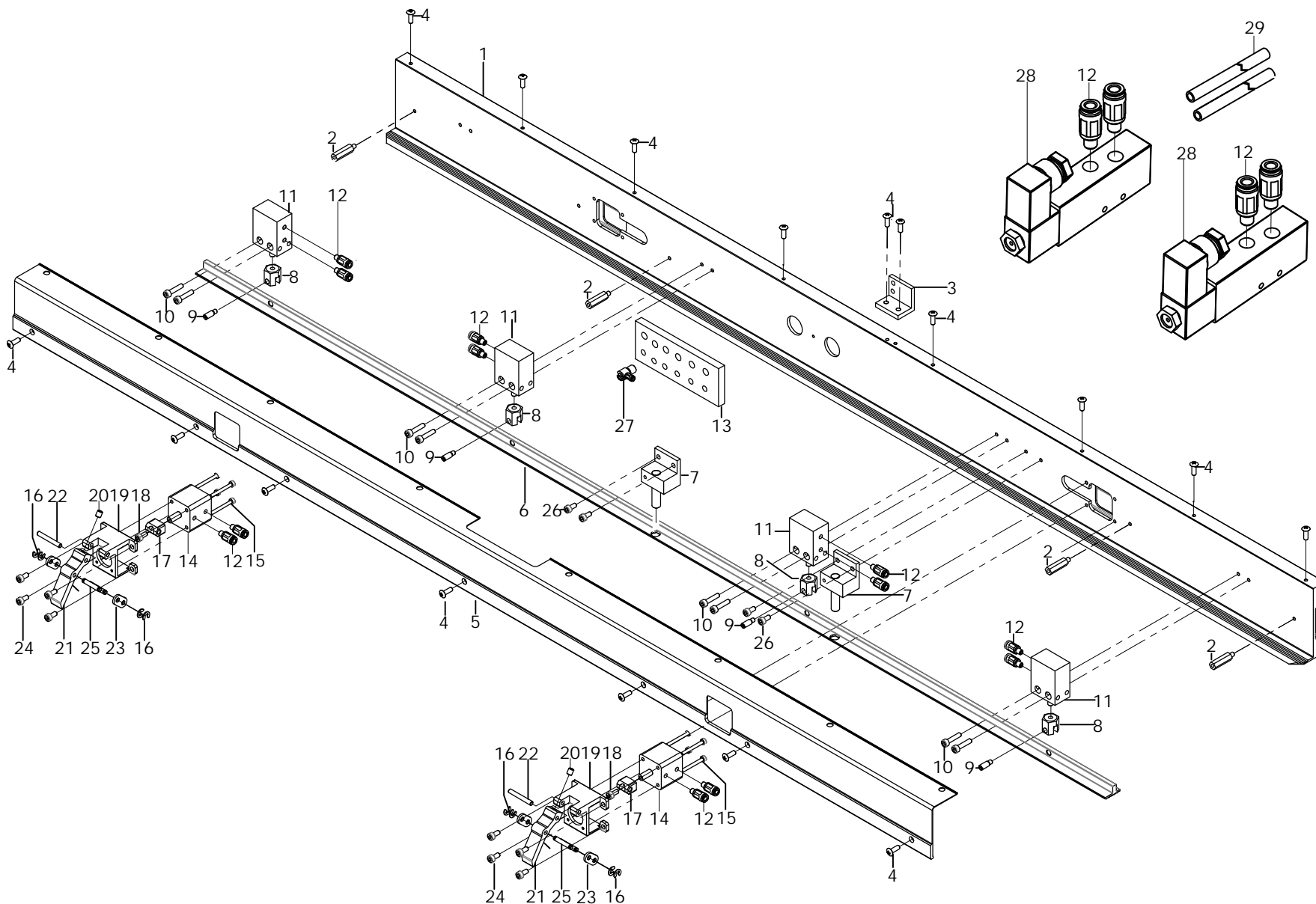
REF.NO.	PART.NO.	名称	DESCRIPTION	Qty
1	GC500-801	Y轴驱动马达	Y MOTOR	1
2	M5L16	内六角螺钉	SCREW M5X16	4
3	GC500-51	轴承支架		1
4	M6L10	内止付螺钉	SCREW M6X10	8
5	GC900-62	同步带轮		1
6	GB6202	带卡轴承	BEARING	2
7	GB2020L722	Y轴丝杆	STOP SHEET	1
8	GB2020A	Y轴丝杆螺母		1
9	GB-E15	轴卡簧		1
10	GC900-60	同步带轮		1
11	GB7002A	轴承	BEARING	2
12	GC900-61	轴承固定套	BEARING COLLAR	2
13	M4L14	螺钉		8
14	5M-305-20	同步带		1
15	M5-L14	螺钉	SCREW	1
16	M15X1MM	螺母		1
17	GB-LB30	直线轴承	BEARING	4
18	GC500-3B	直线轴承支架	BEARING COLLAR	1
19	GC500-3A	直线轴承支架	BEARING COLLAR	1
20	GC900-42	连接架	BEARING SEAT	1
21	GC500-2	左右导轨		2
22	GC900-120	定位片		2
23	M5L10	内六角螺钉		2
24	M5L18	内止付螺钉	SCREW	18
25	M4L14	内止付螺钉	SCREW	8
26	M4L10	内止付螺钉		8
27	GC900-56	丝杆螺母支架		1
28	GC-12H	Y轴原点传感器		1
29	M3-L12	传感器螺钉		1
30	M6-L12	螺钉	SCREW	4

REF.NO.	PART.NO.	名称	DESCRIPTION	Qty
---------	----------	----	-------------	-----

REF.NO.	PART.NO.	名称	DESCRIPTION	Qty
---------	----------	----	-------------	-----



10. X轴移动部份 X MOVEMENT COMPONENTS



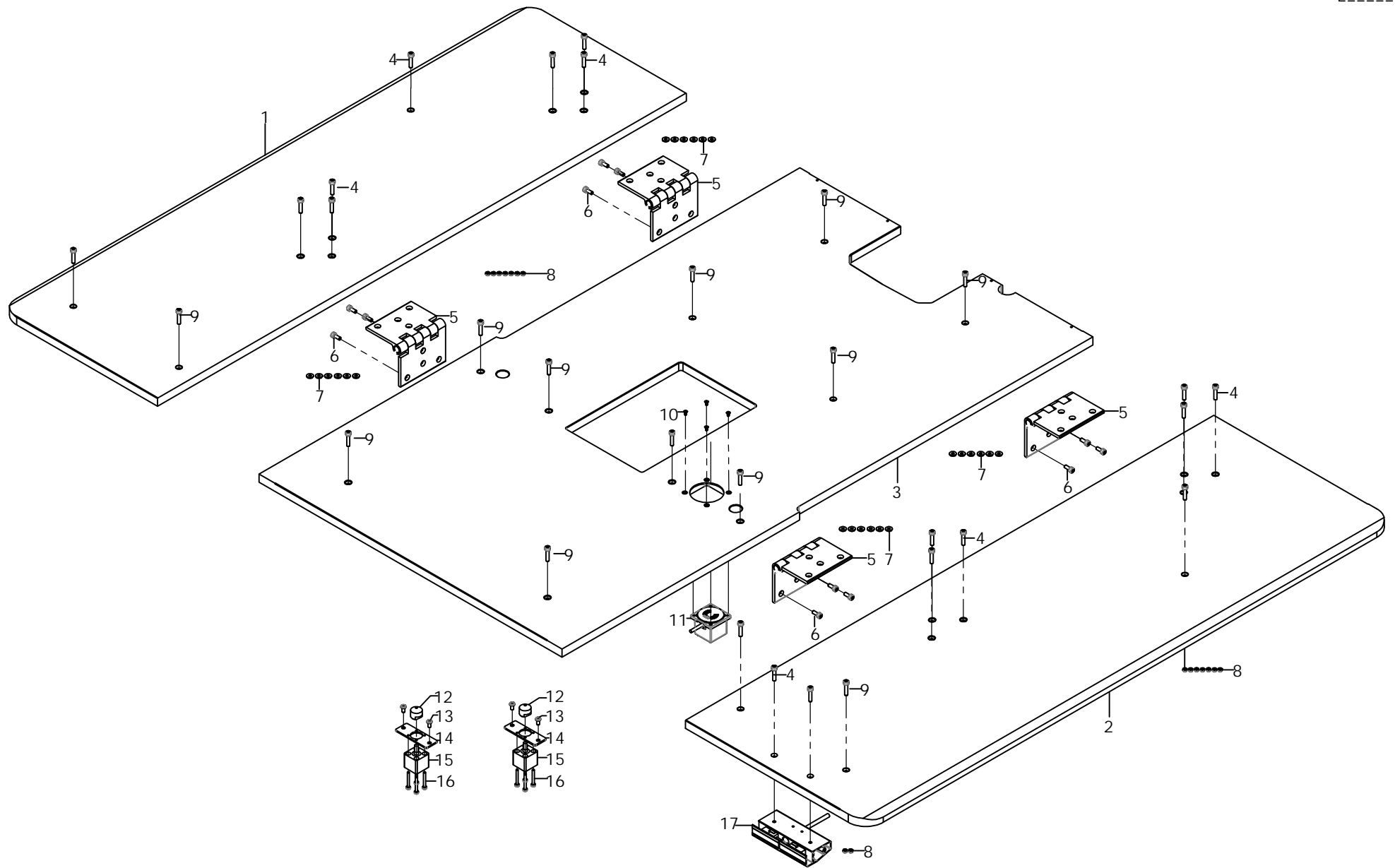
10. X轴移动部份 X MOVEMENT COMPONENTS

REF.NO.	PART.NO.	名称	DESCRIPTION	Qty
1	GC510-16	X轴移动横梁	X CROSSBEAM	1
2	AE10060-67	支柱螺钉	SCREW	5
3	GC812-51	拖链连接头		1
4	M4-L10D	十字螺钉	SCREW	10
5	GC510-24	横梁盖板		1
6	GC510-25	模板压条		1
7	AE12080-108	模板定位销		2
8	AE12080-15	链接块	BLOCK	4
9	AE12080-110	铰链螺钉	BLOCK	4
10	M4-L18	内六角螺钉	SCREW	8
11	MD-16-10B	多位气缸	CYLINDER	4
12	LP4-01	块插接头4	QUICK CONNECTOR 4	8
13	GC900-125	气路汇流板		1
14	ACQ16-10	薄型气缸	CYLINDER	2
15	70.1-M3L28	内六角螺钉	SCREW	8
16	GB-E4	轴卡簧	UIESCRPTION	8
17	GC812-8	链接块	DESCRIPTION	2
18	M4L6	内六角螺钉	SCREW	2
19	GC812-56	气缸固定座	BLOCK	2
20	M5-L5	内止付螺钉	SCREW	2
21	AE12080B-19	模板拉勾		2
22	A8-18	销轴	BLOCK	2
23	A8-10	链接片	BLOCK	4
24	M4L8	内六角螺钉	SCREW	8
25	A8-17	销轴	BLOCK	4
26	M4L8	内六角螺钉	SCREW	4
27	APC4-01	块插接头4		14
28	4V-100	五口二位气阀		4
29	PU98A040025	气管		2

REF.NO.	PART.NO.	名称	DESCRIPTION	Qty

REF.NO.	PART.NO.	名称	DESCRIPTION	Qty

11. 台面部份 FRONT TABLE COMPONENTS



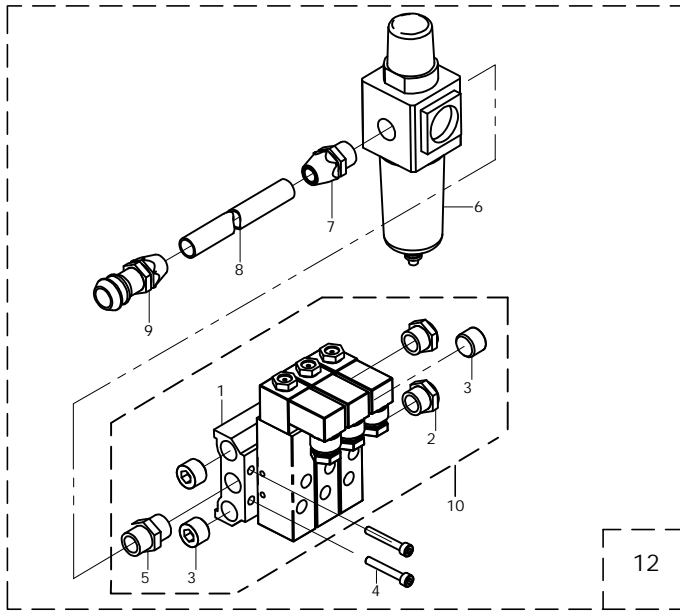
11.台板面部份 FRONT TABLE COMPONENTS

REF.NO.	PART.NO.	名称	DESCRIPTION	Qty
1	GC500-10	左台板	TABLE SET	1
2	GC500-8	右台板	TABLE R	1
3	GC500-7	中台板		1
4	M5-L22	内六角螺钉	SCREW	16
5	GC900-127UP	合页		4
6	M5-L14	内六角螺钉	SCREW	12
7	GB-5.5X14X2	垫片		24
8	GB-M5T	螺母	NUT M5	16
9	M5-L18	内六角螺钉	SCREW	20
10	M4-L8	锥度螺钉	SCREW	4
11	GC900-130UP	模板识别器		1
12	GC900-129	模板顶块		2
13	M4-L10D	十字螺钉	SCREW	4
14	GC900-51	气缸定位片		2
15	ASQ-12X5	气缸		2
16	M3-L24	内六角螺钉	SCREW	8
17	GC900-76UP	启动开关组件		1

REF.NO.	PART.NO.	名称	DESCRIPTION	Qty
---------	----------	----	-------------	-----

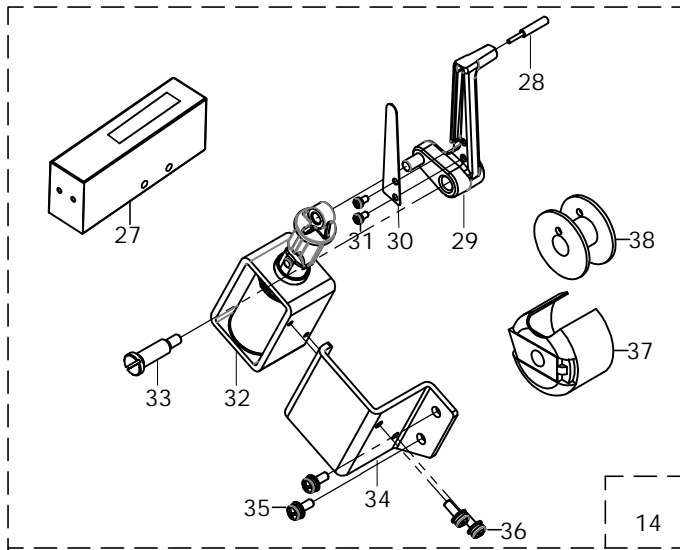
REF.NO.	PART.NO.	名称	DESCRIPTION	Qty
---------	----------	----	-------------	-----

12. 气源部份 PNEUMATIC COMPONENTS



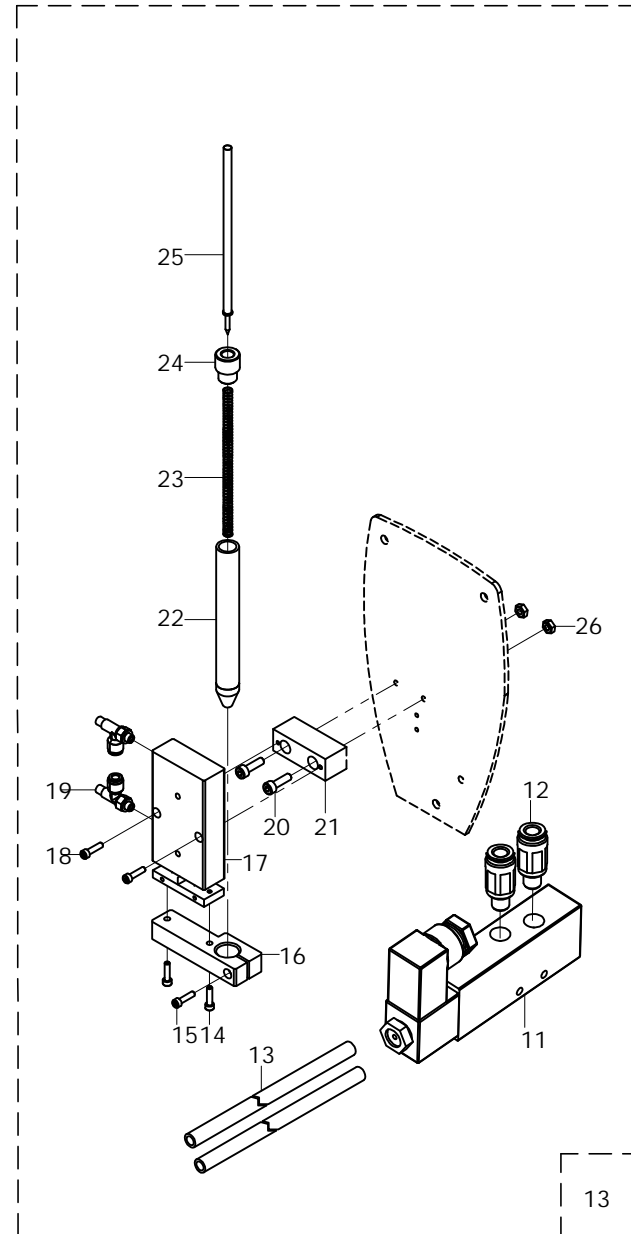
12

14. 底线检测部份



14

13 画笔部份 (选购件) COUNTERDRAW (OPTIONAL) COMPONENTS



13

12. 气源部份 PNEUMATIC COMPONENTS

REF.NO.	PART.NO.	名称	DESCRIPTION	Qty
1	SMC3120-4	四位阀板	VALVE INSTALLING	1
2	A8-1802	消声器1/8"	AIR SILENCER	2
3	A8-1803	喉塞1/8"	PLUG	3
4	70.1-M4-L28	内六角 M4X28	SCREW	1
5	A8-1805	气路连接头1/8"	AIR CHANNEL CONNECTOR	1
6	A8-1806	过滤器SMC	FILTER	1
7	A8-1807	进气管连接头	CONNECTING BLOCK	1
8	PU98A014025	气管	AIR TUBE	1
9	A8-1809	进气管快插接头	CONNECTING BLOCK	4
10	3120-1810	气阀组件	SOLENOID VALVE ASSY.	1

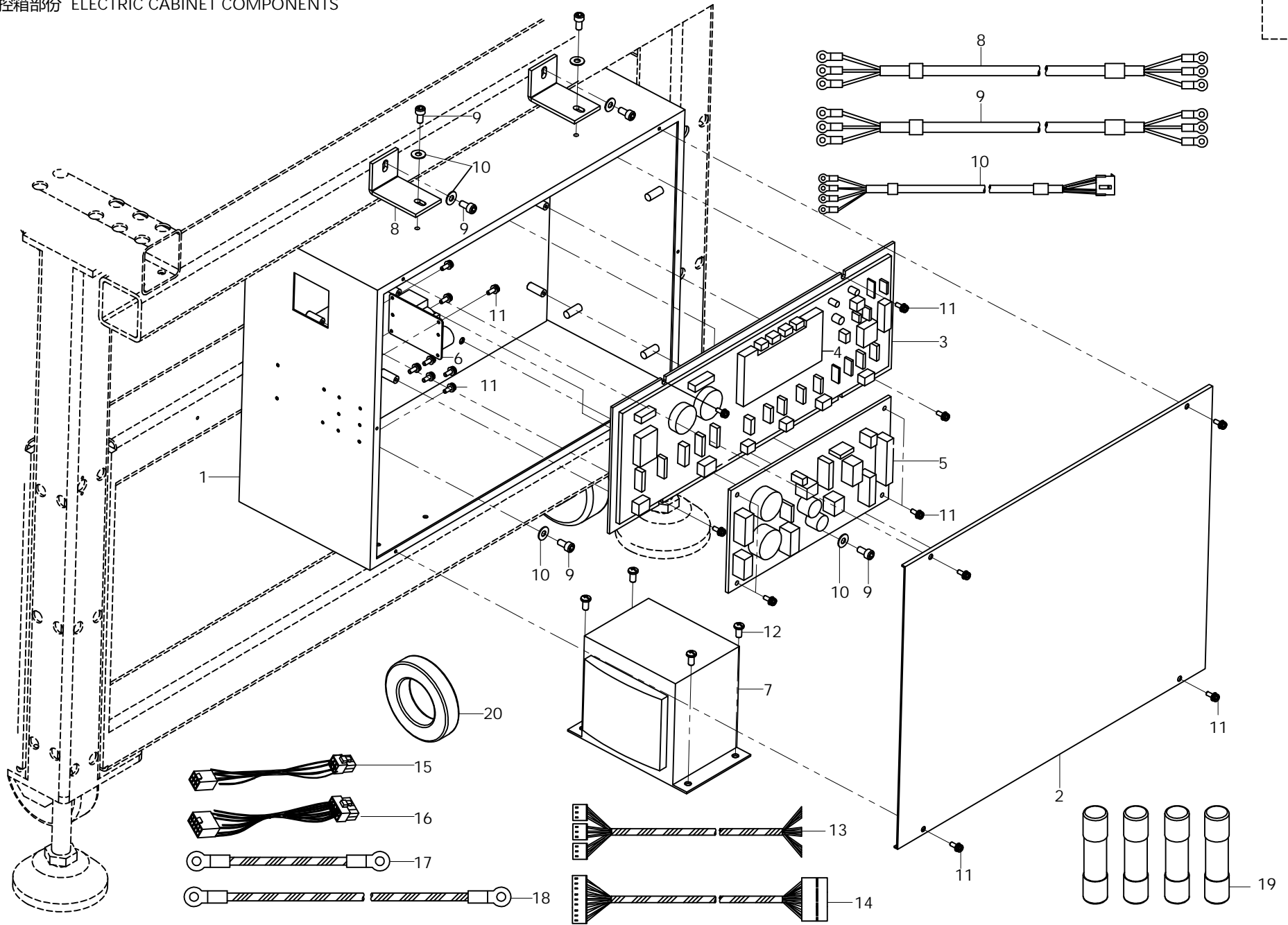
13. 画笔部份 COUNTERDRAWCOMPONENTS

REF.NO.	PART.NO.	名称	DESCRIPTION	Qty
11	4V-100	五口二位气阀		1
12	APC4-01	快速接头4	QUICK PLUG 4	2
13	PU98A040025	气管 2M	AIR TUBE 2M	2
14	M3-L14	内六角 M3X14	SCREW	2
15	M3-L16	内六角 M3X16	SCREW	1
16	AE9050-79	画笔支架	BRUSH STAND	1
17	MK-10X30	双缸气缸	AIR CYLINDER	2
18	70.1-M3-L14	内六角 M3X14	SCREW	2
19	ASL4-M5	流量阀	FIXING BLOCK	5
20	70.1-M4-L14	内六角 M4X14	SCREW	
21	AE9050-82	固定块	FIXING BLOCK	1
22	AE9050-80	画笔壳	BUSH COVER	1
23	AE9050-84	压簧	SPRING	1
24	AE9050-81	螺母	NUT	1
25	HB9050-1610	画笔心	CARTRIDGE	1
26	GB-M4	螺母 M4	NUT	2

14. 底线检测部份

REF.NO.	PART.NO.	名称	DESCRIPTION	Qty
27	PE23YN	光纤放大器		1
28	DR31G/E-M4	漫反射光纤头		1
29	GC900-3	光纤头支架		1
30	GC900-12	盖板	SCREW	2
31	M3-L8	十字螺钉	SCREW	2
32	GC900-110UP	电磁铁组件		1
33	GC900-11	铰链螺丝		1
34	GC900-2	电磁铁支架		1
35	M4-L14	内六角螺钉	SCREW	2
36	M4-L10	内六角螺钉	SCREW	2
37	MS-2-2.0T	2.0自检测梭壳	HOOK S	1
38	MS-3-2.0T	2.0自检测梭心	HOOK S	4

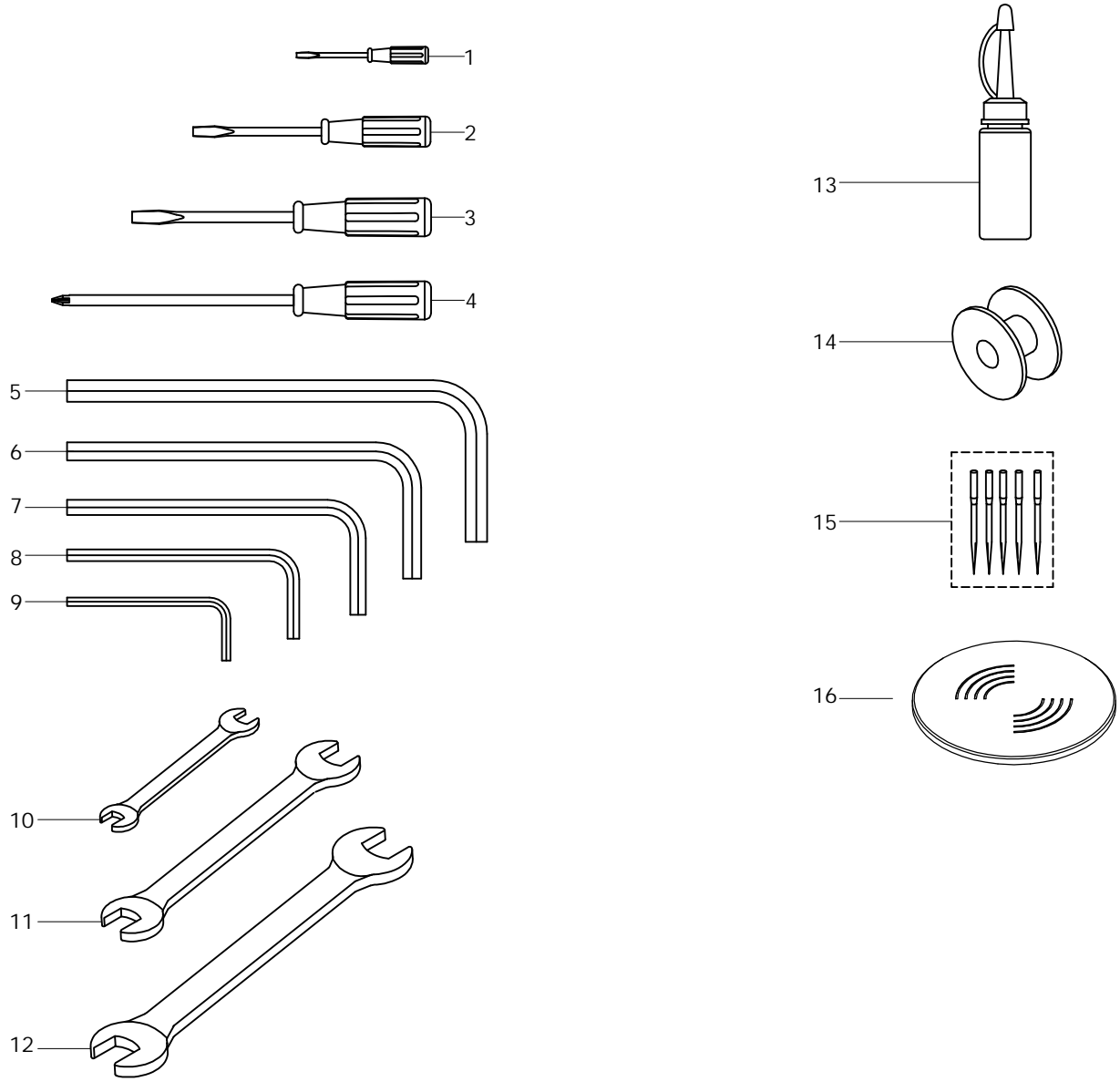
13. 电控箱部份 ELECTRIC CABINET COMPONENTS



13. 电控箱部份 ELECTRIC CABINET COMPONENTS

REF.NO.	PART.NO.	名称	DESCRIPTION	Qty	REF.NO.	PART.NO.	名称	DESCRIPTION	Qty	REF.NO.	PART.NO.	名称	DESCRIPTION	Qty
1	AE12080B-DX1	电控箱外壳	ELECTRIC CABINET COVER	1										
2	AE12080B-DX2	电控箱盖板	ELECTRIC CABINET COVER PLATE	1										
3	AE12080B-PC1	电控主板组件	ELECTRIC CABINET BOARD ASSY	1										
4	AE12080B-PC2	电控总控板		1										
5	AE12080B-PC3	伺服电机控制组件		1										
6	AE12080B-PC4	滤波器	FILTER	1										
7	AE12080B-BYQ	变压器	TRANSFORMER	1										
8	AE12080B-364	电控箱链接片	ELECTRIC CABINET CONNECTING BLOCK	2										
9	70.1-M6-L10	圆柱头内六角螺钉	SCREW	4										
10	848-6.5-15	垫片 6.5-13-1.5	WASHER	4										
11	9074-M4-L12	三件套 M4X14	SCREW	26										
12	818.4-M4-L12	十字螺钉 M4X12	SCREW	4										
13	DX12080-1713	气阀信号输送线	VALVE SIGNAL CABLE	1										
14	DX12080-1714	主板伺服板信号线	BOARDS SIGNAL CABLE	1										
15	DX12080-1715	开关电源输送线	POWER SUPPLY CABLE	1										
16	DX12080-1716	步进马达输送桥线	STEPPING MOTOR DRIVEN DEVICE CONNECTING CABLE	1										
17	DX12080-1717	地线1	GROUND ELECTRODE A	4										
18	DX12080-1718	地线2	GROUND ELECTRODE B	1										
19	BXS12080-10A	保险丝10A	FUSE 10A	4										
20	CF-12080-1	磁环	MAGNET RING	1										
21	DX12080B-1521	电力输入线缆 1	POWER CABLE 1	1										
22	DX12080B-1522	电力输入线缆 2	POWER CABLE 2	1										
23	DX12080B-1523	信号输送电线	SAFETY SIGNAL CABLE	2										

14. 附件部份 ACCESSORY PARTS COMPONENTS



14. 附件部份 ACCESSORY PARTS COMPONENTS

REF.NO.	PART.NO.	名称	DESCRIPTION	Qty
1	GJ-LSD-01	一字螺丝刀	SCREWDRIVER	1
2	GJ-LSD-02	一字螺丝刀	SCREWDRIVER	1
3	GJ-LSD-03	一字螺丝刀	SCREWDRIVER	1
4	GJ-LSD-04-X	十字头螺丝刀	SCREWDRIVER	1
5	SCCG00590	内六角扳手 5	ALLEN WRENCH	1
6	SCCG00580	内六角扳手 4	ALLEN WRENCH	1
7	GSCCG00570	内六角扳手 3	ALLEN WRENCH	1
8	GJ-LJBS-2.5	内六角扳手 2.5	ALLEN WRENCH	1
9	GJ-LJBS-2	内六角扳手 2	ALLEN WRENCH	1
10	CH00030	开口扳手 7-8	OPEN-END WRENCH	1
11	CH00220	开口扳手 9-10	OPEN-END WRENCH	1
12	CH00010	开口扳手 11-14	OPEN-END WRENCH	1
13	116260	加油壶	OIL CAN	1
14	AE-000-1.7	梭芯	BOBBIN	4
15	DPX5	机针11#	NEEDLE 11#	5
16	AE-00011	模板感应芯片	FORMWORK SENSOR	20

REF.NO.	PART.NO.	名称	DESCRIPTION	Qty
---------	----------	----	-------------	-----

REF.NO.	PART.NO.	名称	DESCRIPTION	Qty
---------	----------	----	-------------	-----



高林股份有限公司
KAULIN MFG. CO., LTD.

由於對產品的改良及更新，本產品使用說明書中與零件圖之產品及外觀的修改恕不事先通知！
The specification and/or appearances of the equipment described in this instruction book & parts list are subject to change because of modification which will without previous notice.
JSL-24AK03.APR.2025