

SIRUBA	Series	Parts Group	Subclass / Remark	Page
PARTS LIST	VC008B	VAD		1/1
				Date
				2020/09/23

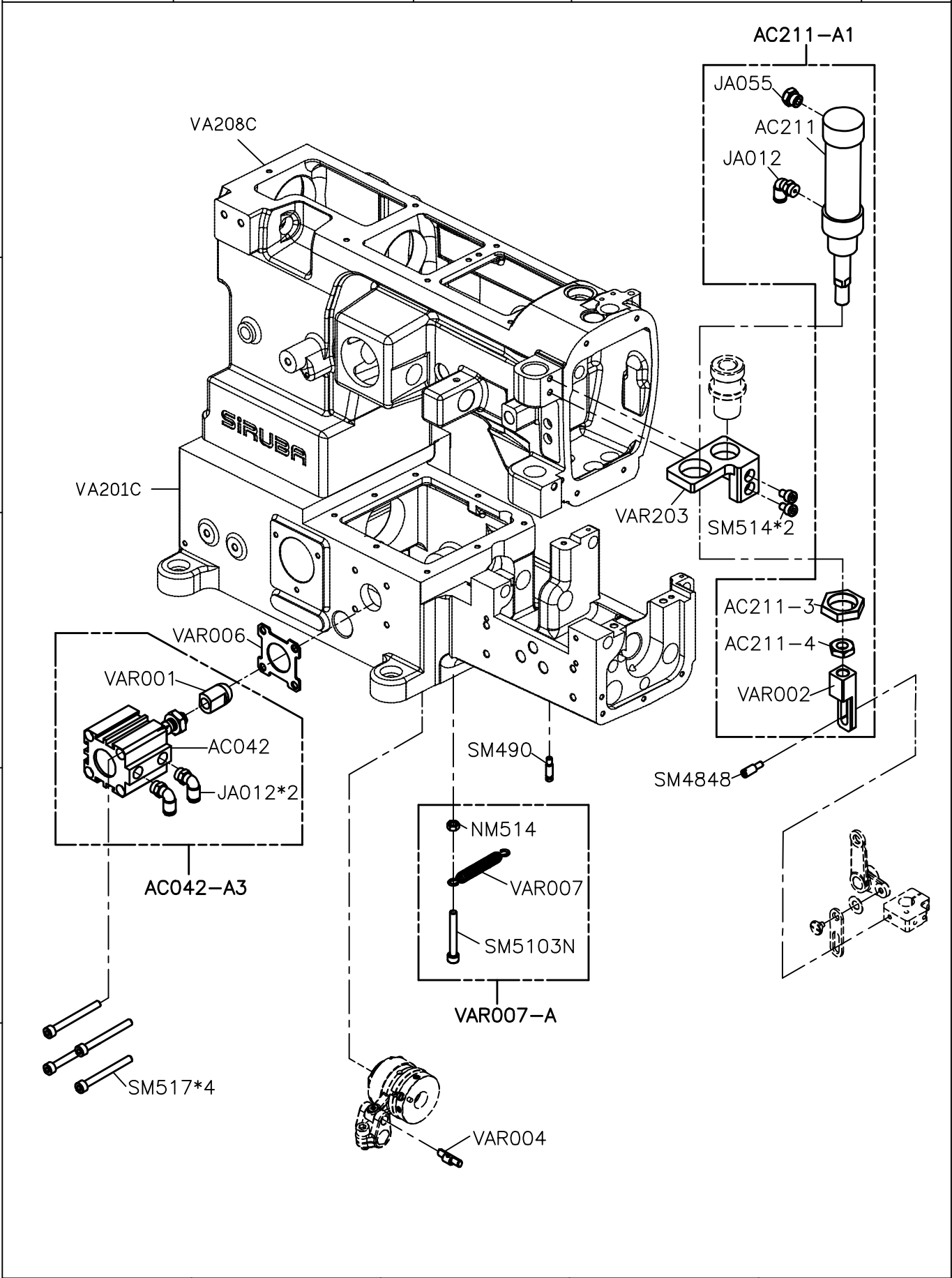
Exploded view diagram of the VC008B VAD assembly. The diagram shows various components and their assembly sequence, indicated by numbers 1 through 5. Key parts include:

- 1. VAD02-A (main body)
- 2. VAD03 (mounting bracket)
- 3. VAD02 (mounting bracket)
- 4. VAD01 (mounting bracket)
- 5. VAD04 (mounting bracket)

Other parts shown include:

- CY114-1, JA016, JA011\*2, CY114-3\*2, CY114-2, CY114-E, AP420, AP419, AP603, JA012\*2, AC211-A, AC211, AC211-3, AC211-4, UT811K, UT41L, UT41L-A, UT54J-A, UT54J-2, SK392\*2, JA014, JA025, UT54J, WM600\*2, SM611\*2, SM623\*3, TI28\*2, CY109, ALT104S\*2, (VJ205), and VAD02.

SIRUBA PARTS LIST	Series	Parts Group	Subclass / Remark	Page
	VC008B	VAR		1/1
				Date
				2023/12/05



SIRUBA PARTS LIST	Series	Parts Group	Subclass / Remark	Page
	VC008B	VCE		1/1
				Date
				2021/02/22

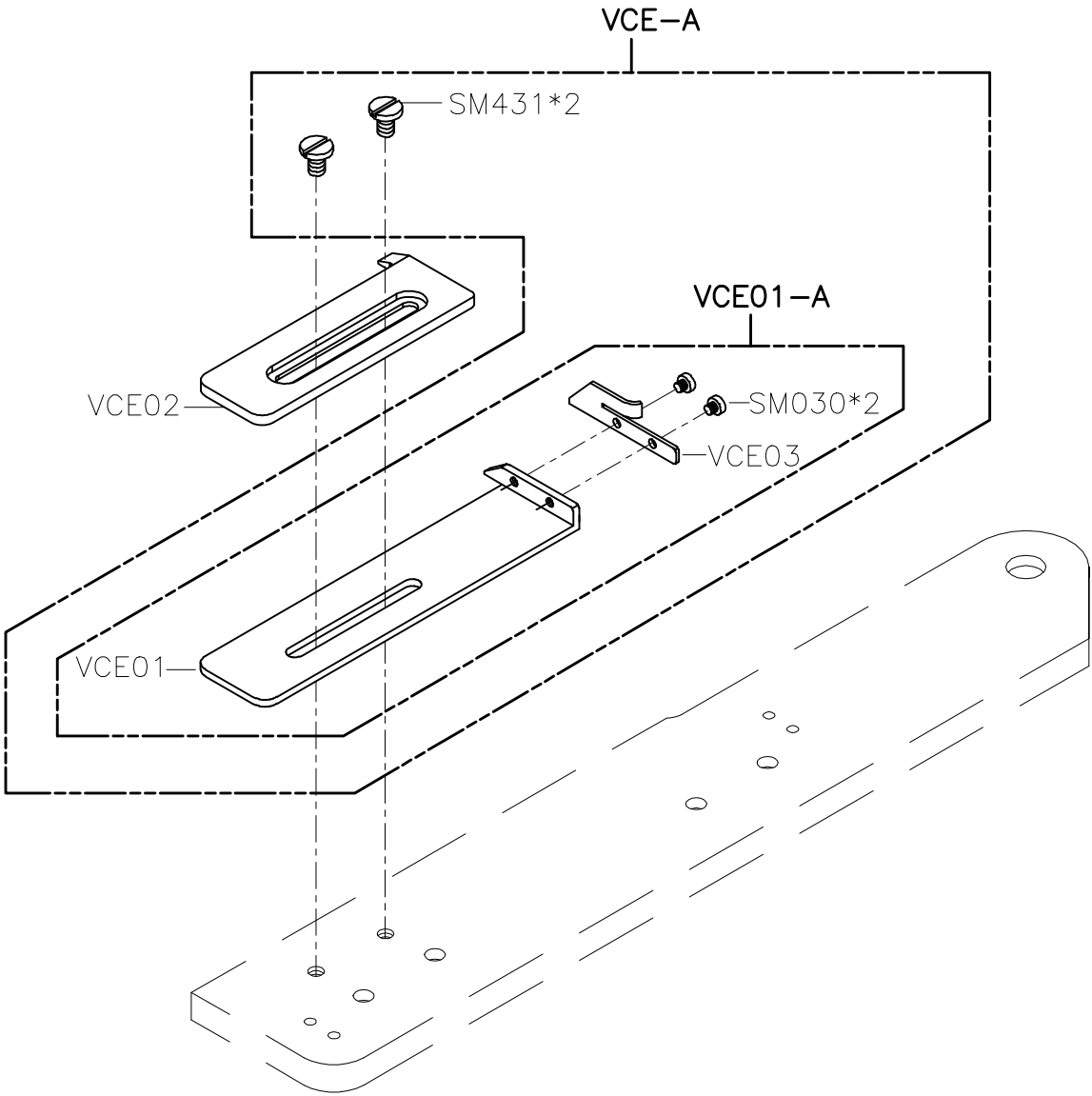
A

B

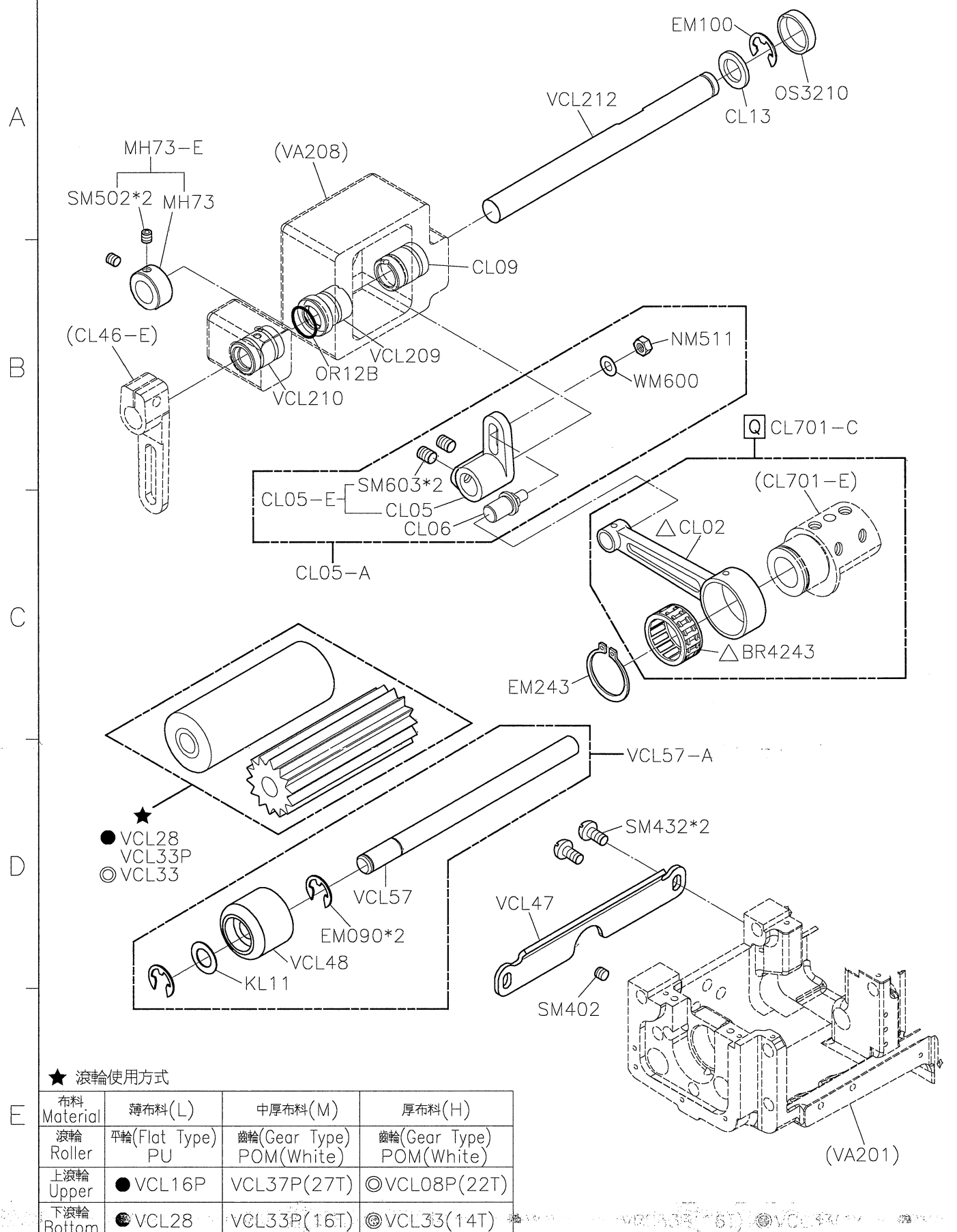
C

D

E



SIRUBA PARTS LIST	Series	Parts Group	Subclass / Remark	Page
	VC008B	VCL	△ CL02, BR4243需再和 CL701-E选配	1/3
				Date
				2019/12/09



1

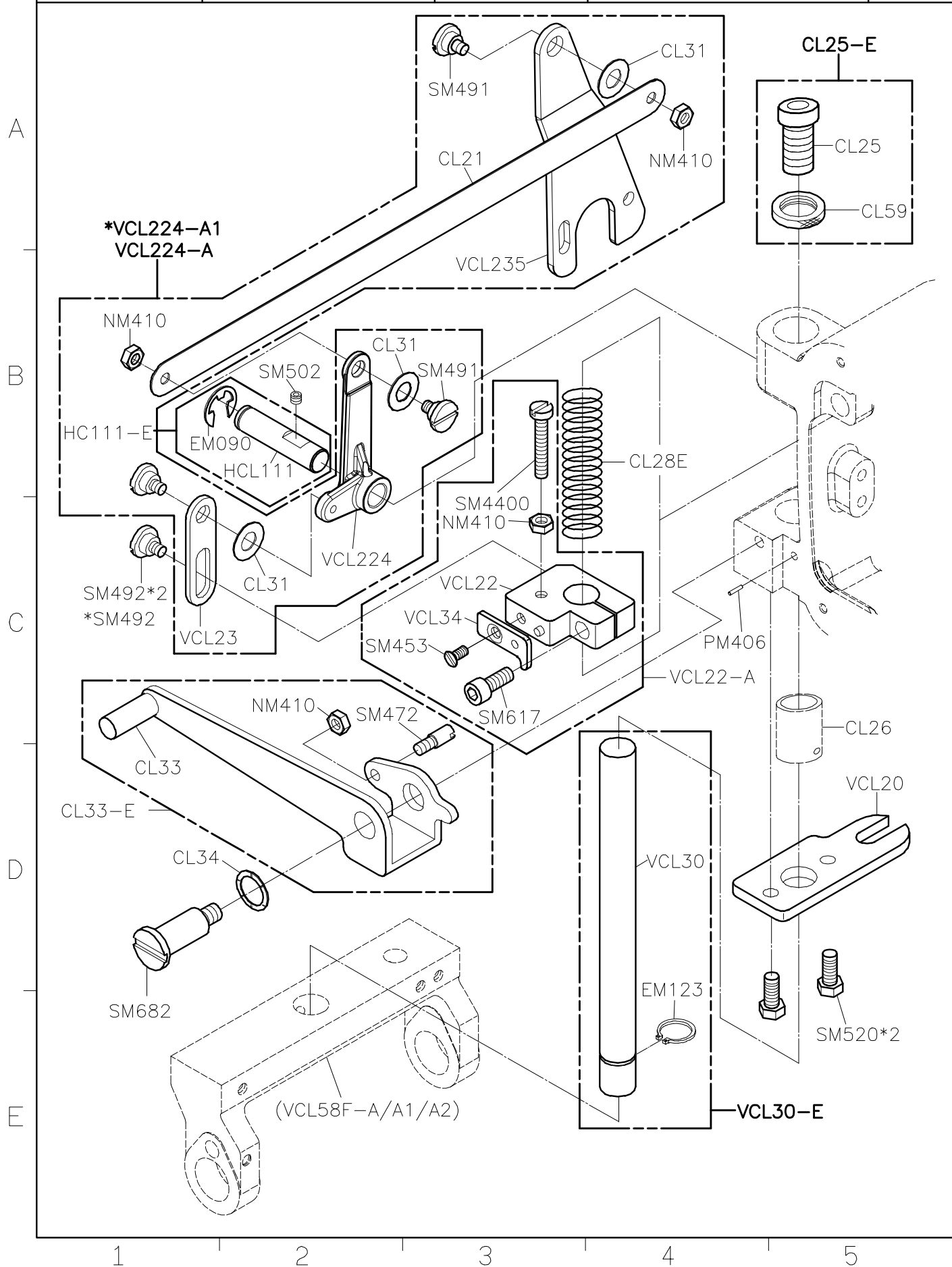
2

3

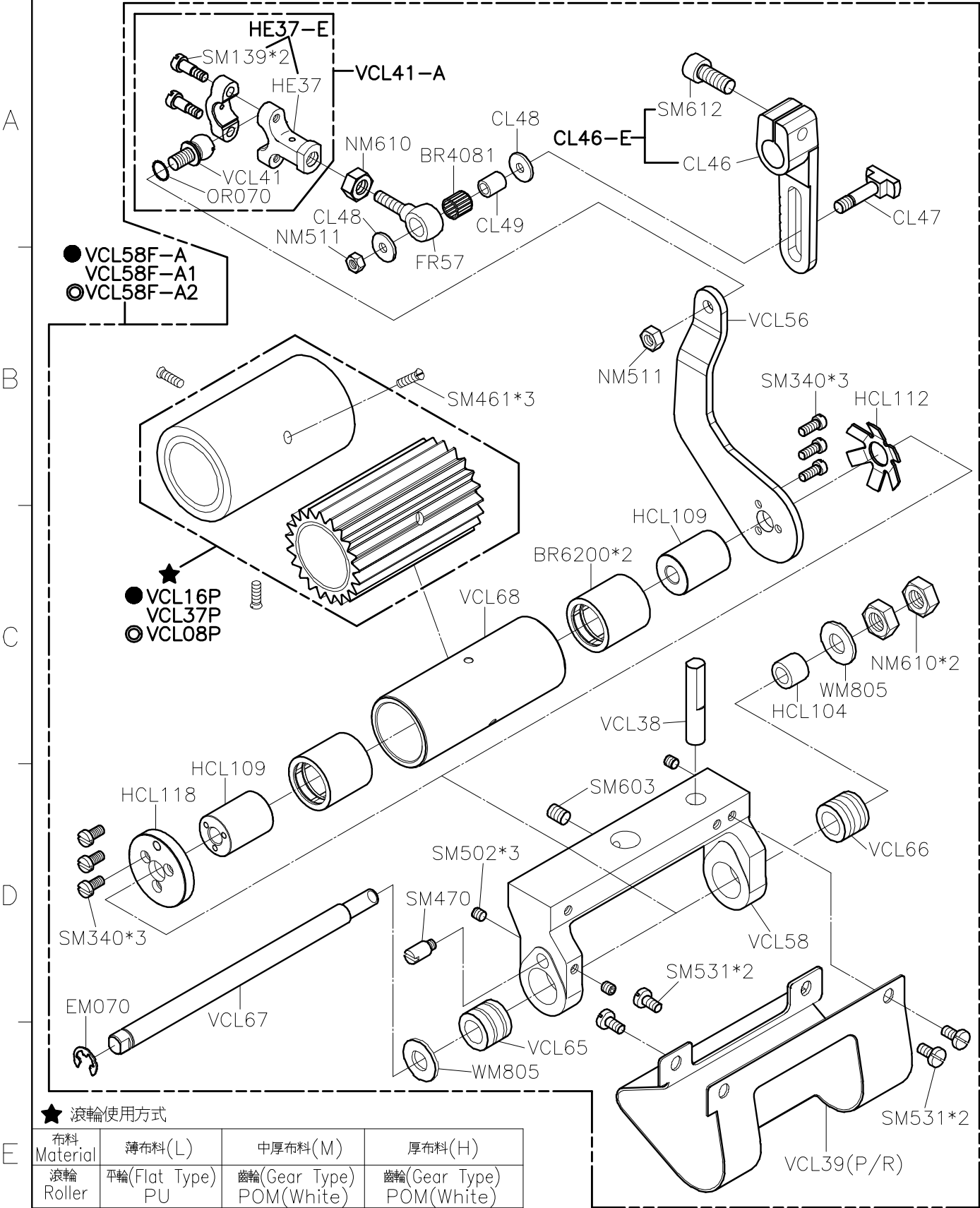
4

5

SIRUBA PARTS LIST	Series	Parts Group	Subclass / Remark	Page
	VC008B	VCL	*For VAR	2/3
				Date
				2023/04/20



SIRUBA PARTS LIST	Series	Parts Group	Subclass / Remark	Page
	VC008B	VCL		3/3
				Date
				2023/4/20



E

1

2

3

4

5

**SIRUBA**

PARTS LIST

Series

**VC008B**

Parts Group

**VPL-B**

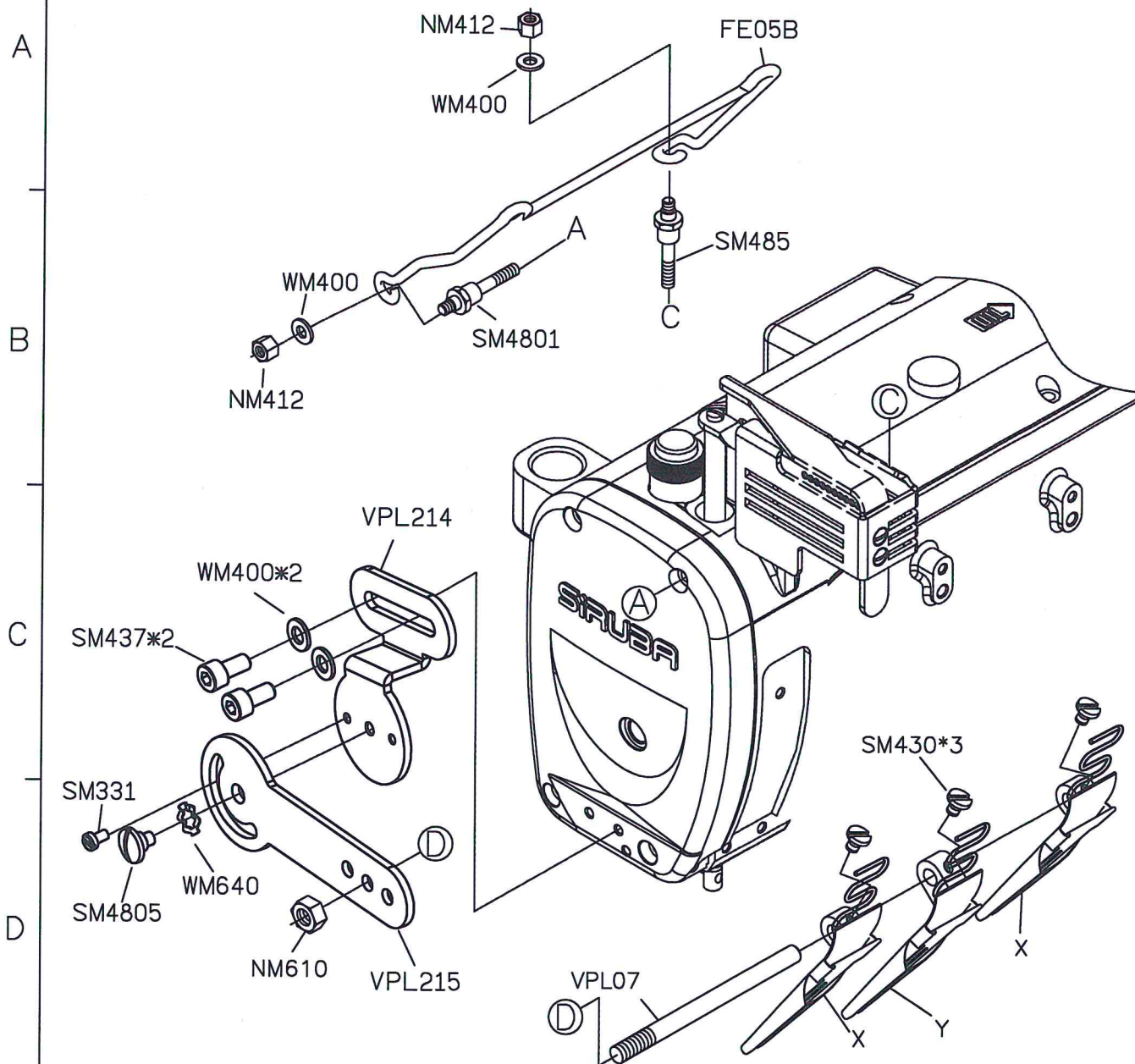
Subclass / Remark

Page

1/1

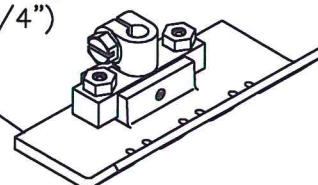
Date

2023/06/05



機型	完成尺寸	X	Y	針寬	壓具
VC008B-06048	8	B418P	B418AP	3/16"	P9412DA
	9	B418Q	B418AQ		P9412D
VC008B-06064	10	B418R	B418AR	1/4"	P9512DA
	12	B418S	B418AS		P9512D
	16	B418U	B418AU	1/2"	P9512B

P9412D,P9412DA(3/16")  
P9512D,P9512DA (1/4")  
P9512B (1/2")



1

2

3

4

5





**SIRUBA**  
**PARTS LIST**

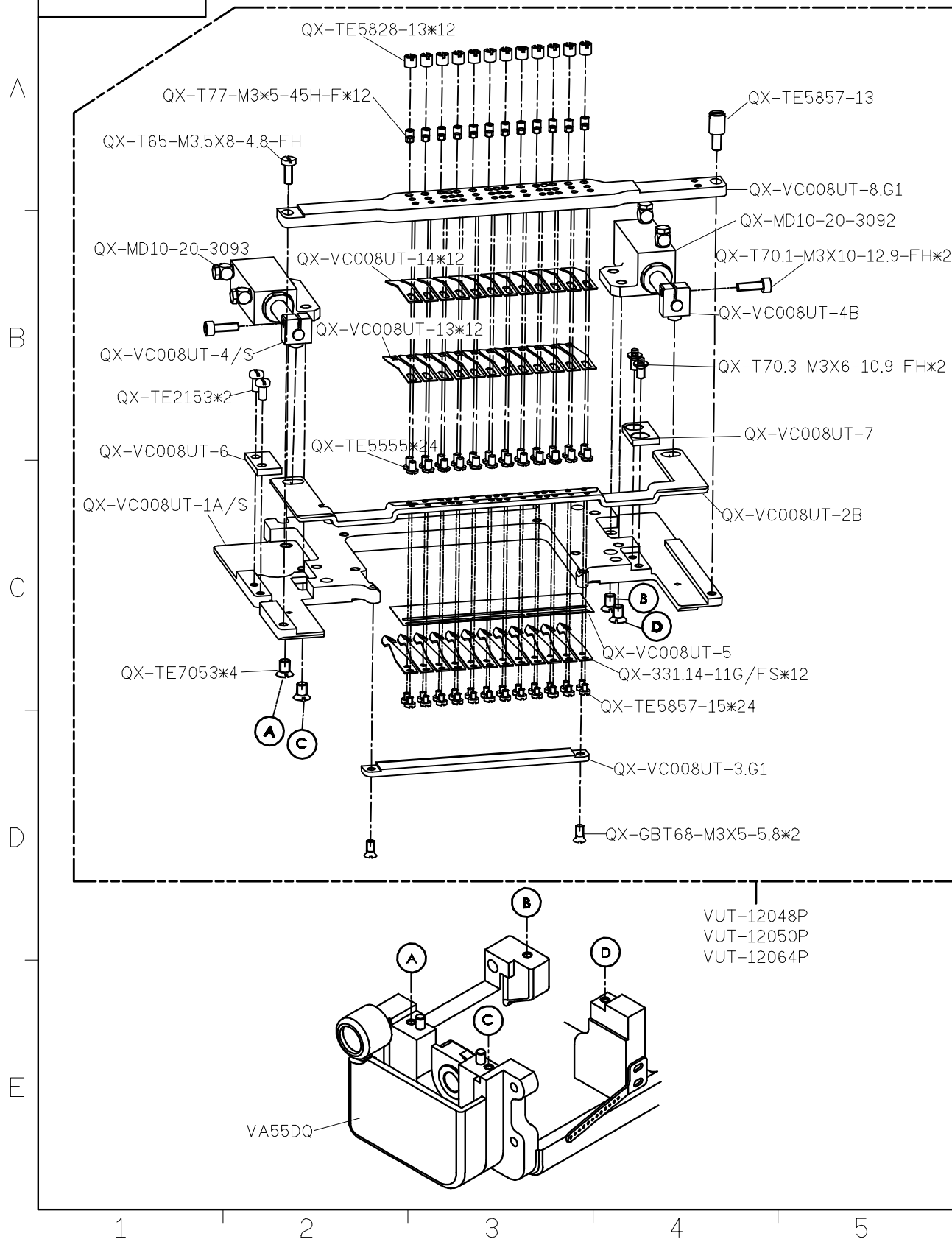
**Series**  
**VC008A/B**

**Parts Group**  
**VUT**

**Subclass / Remark**  
● FOR 12 NEEDLE

**Page**  
2/6  
**Date**  
2023/04/10

**QX-VUT**



SIRUBA PARTS LIST	Series	Parts Group	Subclass / Remark	Page
	VC008A/B	VUT	● FOR 4/12 NEEDLE	3/6
				Date
				2023/03/21
QX-VUT				

VUT-TTU-A

QX-JK-8009TTU-2A

QX-JK-8009TT-3

QX-T6170-M4-06-Ni

QX-JK-8009TTU-1A

QX-T97.1-4-A14\*3

QX-T70.1-M4X6-12.9-Ni

QX-T70.1-M4X12-12.9-Ni\*2

QX-PB10X30-U.XC

QX-TE5553-4B

QX-ASL4-M5.JS\*2

VUT-TT-A

QX-ASL4-M5.JS\*2

QX-PB10X30-U.XC

QX-TE5553-4B

QX-JK-8009TT-1

QX-T6170-M4-06-Ni\*2

QX-T97.1-4-A140\*3

QX-T70.1-M4X6-12.9-Ni\*3

QX-T65-M4X10-5.8-Ni\*2

QX-JK-8009TT-2B

QX-JK-8009TT-3A

1

2

3

4

5





SIRUBA PARTS LIST	Series	Parts Group	Subclass / Remark	Page
	VC008A/B	VUT	● FOR VAR	8/8
				Date
				2023/11/24
QX-VUT				

A1

B1

→

抬壓腳

A2

B2

→

鬆線/剪線

B3

→

吹氣

A4

B4

→

密縫