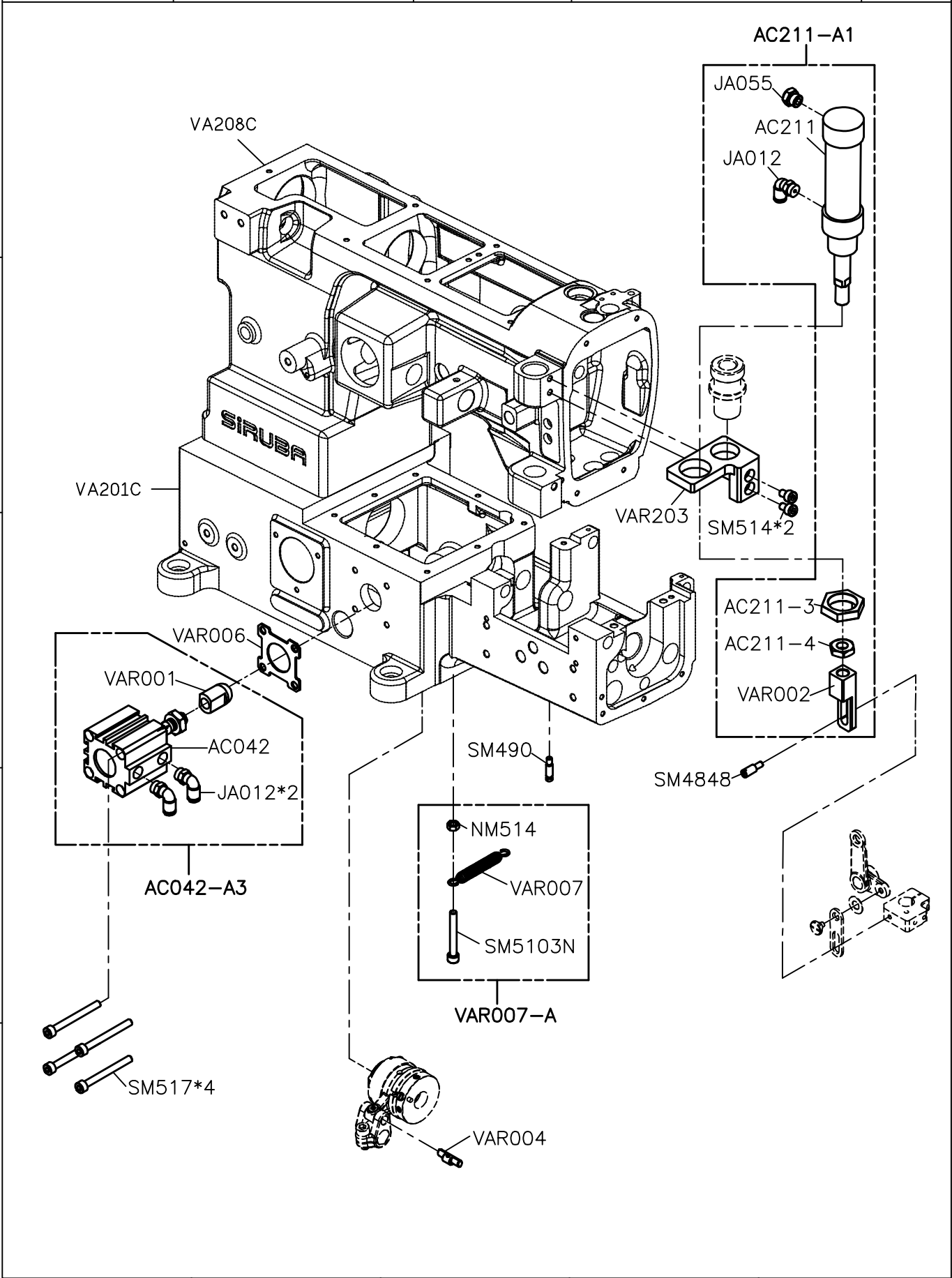


SIRUBA	Series	Parts Group	Subclass / Remark	Page
PARTS LIST	VC008B	VAD		1/1
				Date
				2020/09/23

SIRUBA PARTS LIST	Series	Parts Group	Subclass / Remark	Page
	VC008B	VAR		1/1
				Date
				2023/12/05



SIRUBA PARTS LIST	Series	Parts Group	Subclass / Remark	Page
	VC008B	VCE		1/1
				Date
				2021/02/22

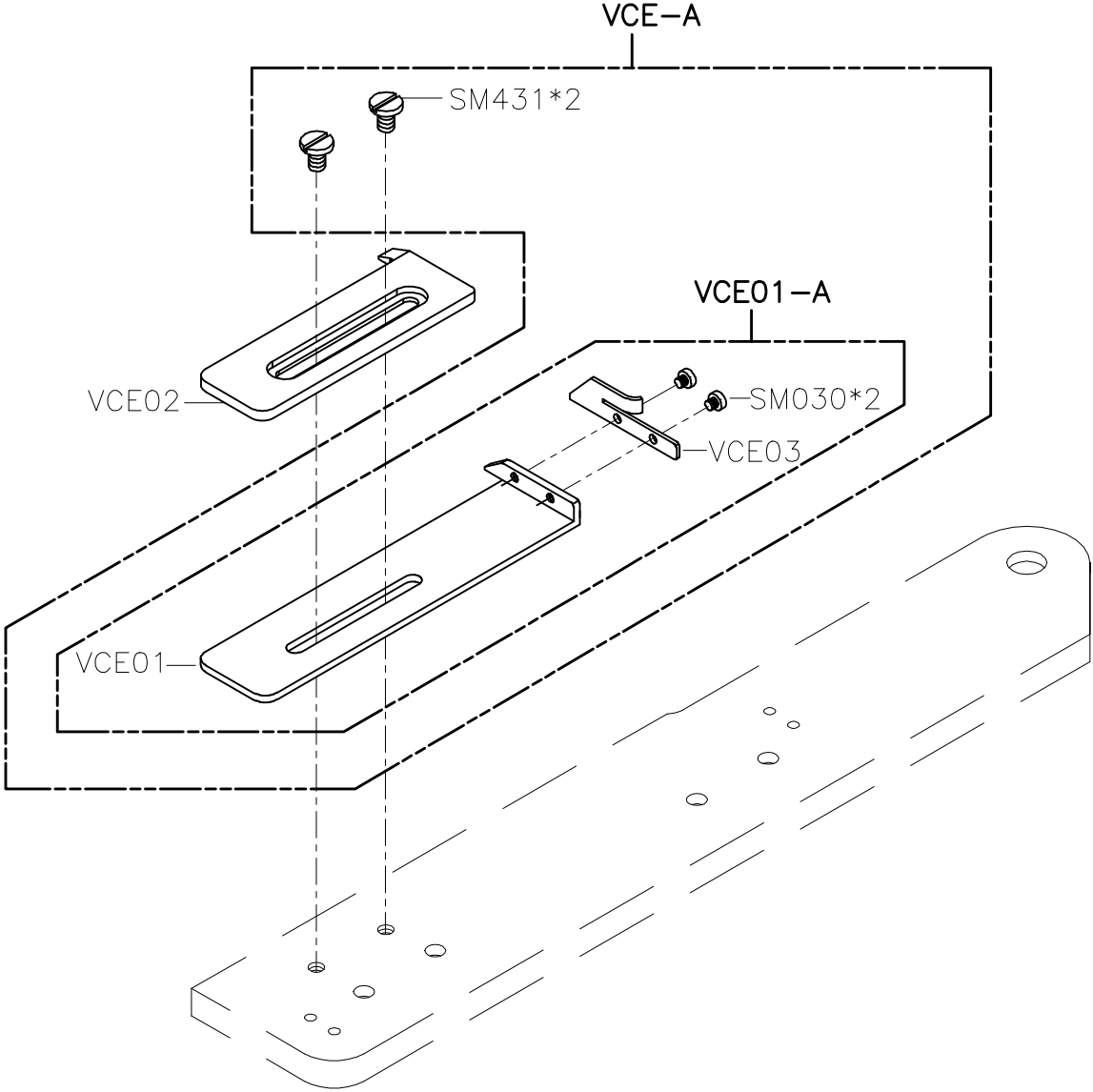
A

B

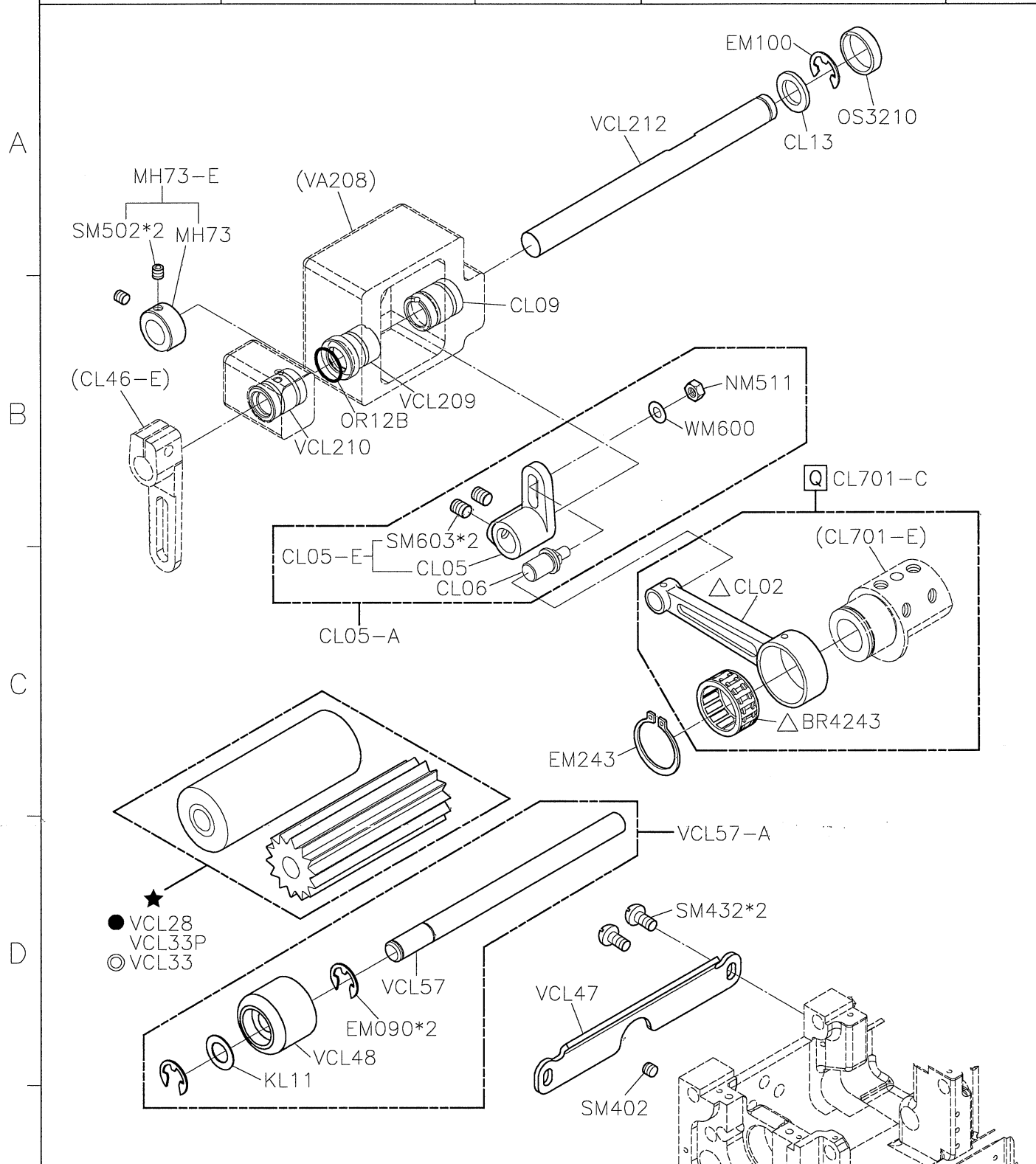
C

D

E



SIRUBA PARTS LIST	Series	Parts Group	Subclass / Remark	Page
	VC008B	VCL	△ CL02, BR4243需再和 CL701-E選配	1/3
				Date
				2019/12/09



★ 滾輪使用方式

布料 Material	薄布料(L)	中厚布料(M)	厚布料(H)
滾輪 Roller	平輪(Flat Type) PU	齒輪(Gear Type) POM(White)	齒輪(Gear Type) POM(White)
上滾輪 Upper	● VCL16P	VCL37P(27T)	◎ VCL08P(22T)
下滾輪 Bottom	● VCL28	VCL33P(16T)	◎ VCL33(14T)

1

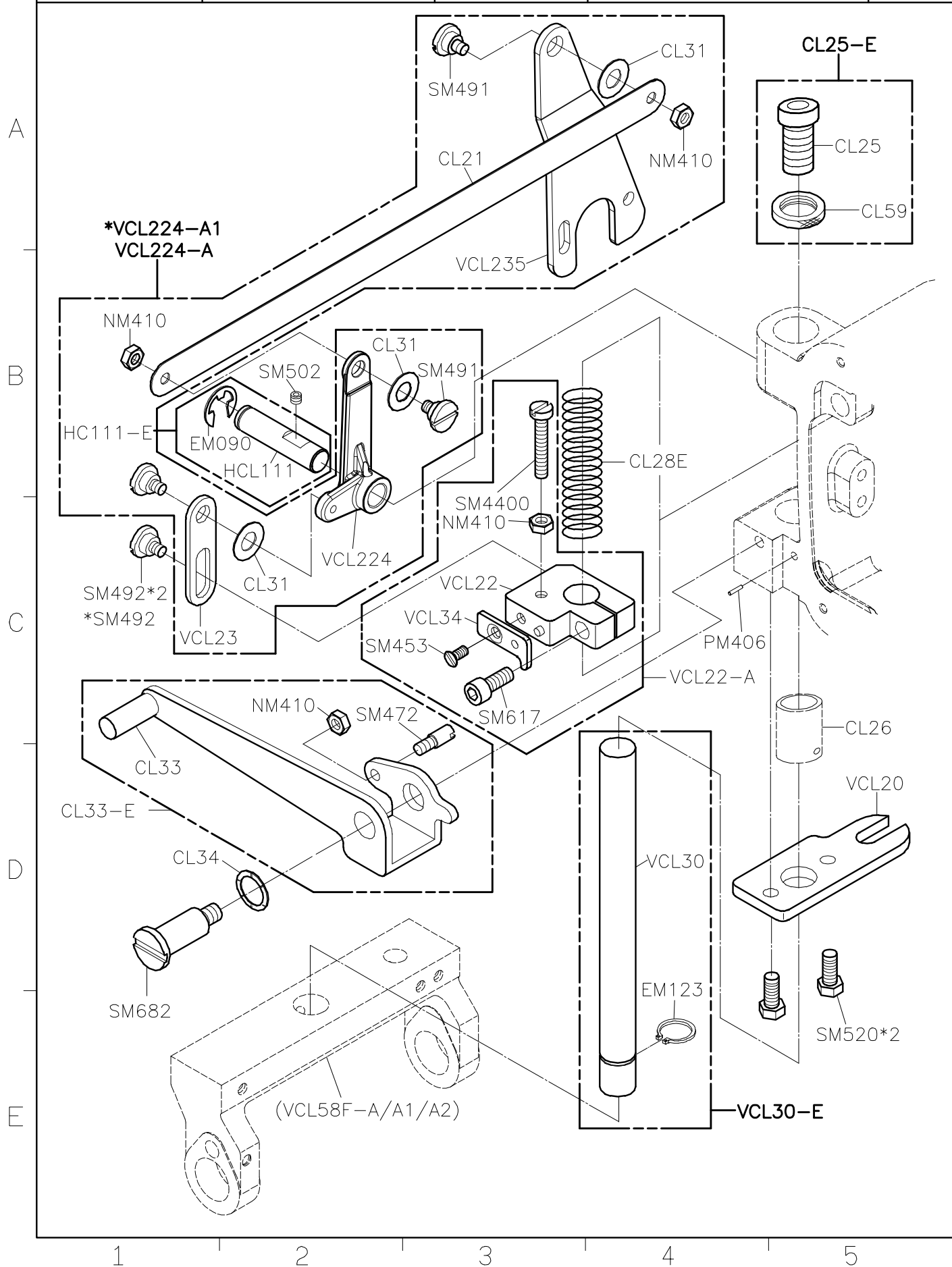
2

3

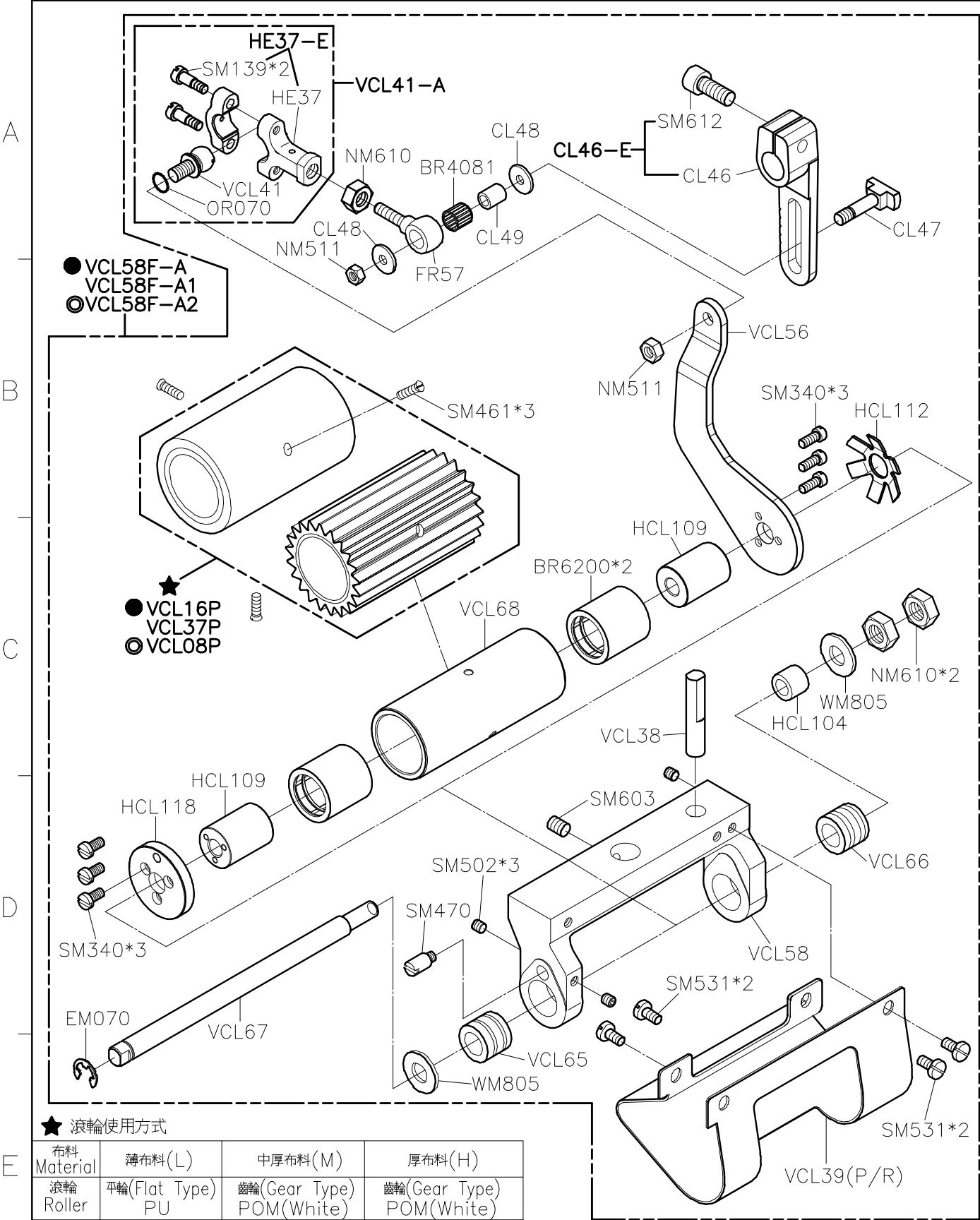
4

5

SIRUBA PARTS LIST	Series	Parts Group	Subclass / Remark	Page
	VC008B	VCL	*For VAR	2/3
				Date
				2023/04/20



SIRUBA PARTS LIST	Series	Parts Group	Subclass / Remark	Page
	VC008B	VCL		3/3
				Date
				2023/4/20



★ 浪輪使用方式

布料 Material	薄布料(L)	中厚布料(M)	厚布料(H)
浪輪 Roller	平輪(Flat Type) PU	齒輪(Gear Type) POM(White)	齒輪(Gear Type) POM(White)
上浪輪 Upper	● VCL16P	VCL37P(27T)	◎ VCL08P(22T)
下浪輪 Bottom	● VCL28	VCL33P(16T)	◎ VCL33(14T)

SIRUBA

PARTS LIST

Series

VC008B

Parts Group

VPL-B

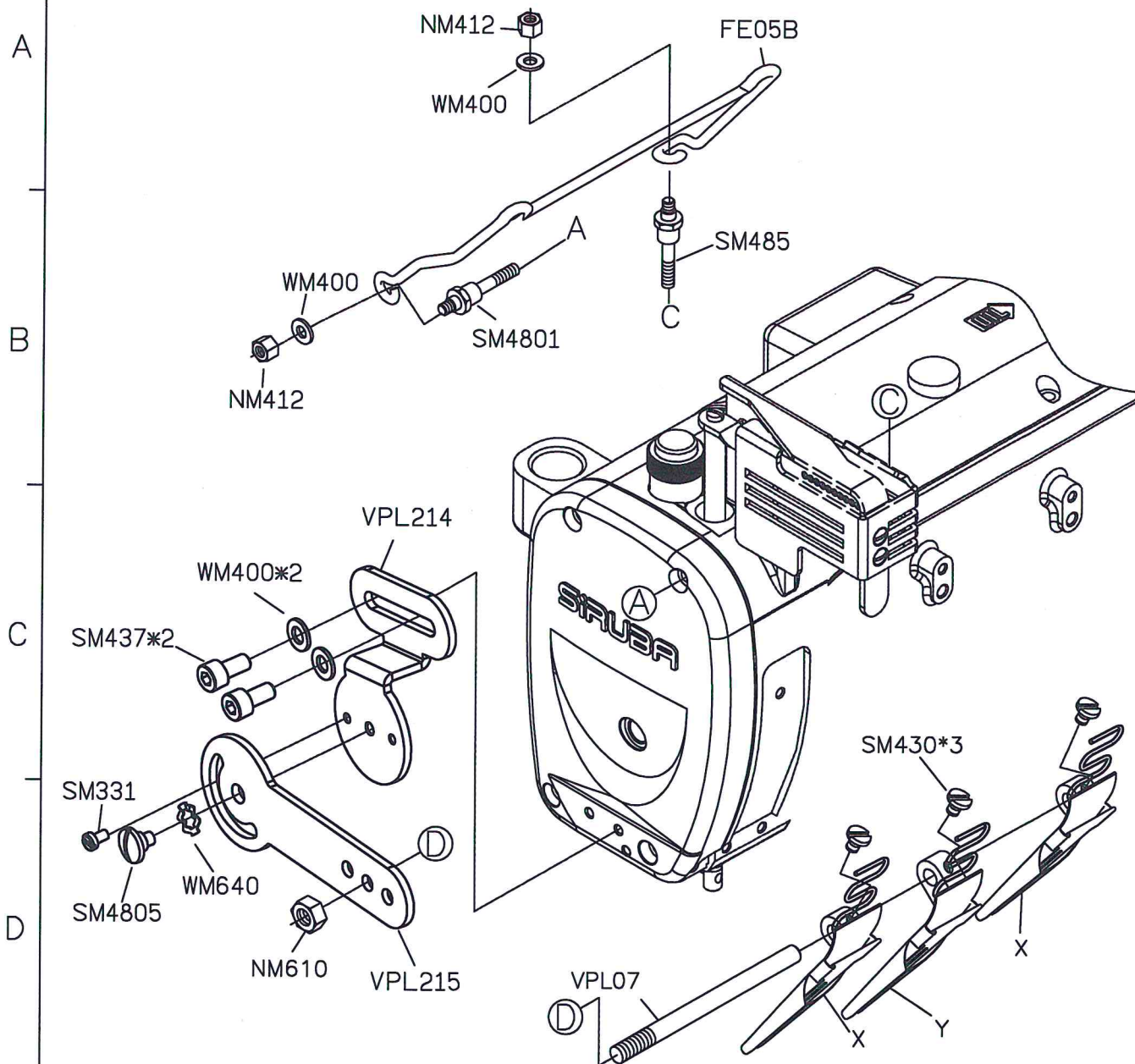
Subclass / Remark

Page

1/1

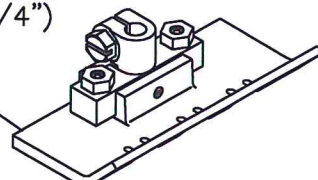
Date

2023/06/05



機型	完成尺寸	X	Y	針寬	壓具
VC008B-06048	8	B418P	B418AP	3/16"	P9412DA
	9	B418Q	B418AQ		P9412D
VC008B-06064	10	B418R	B418AR	1/4"	P9512DA
	12	B418S	B418AS		P9512D
	16	B418U	B418AU	1/2"	P9512B

P9412D,P9412DA(3/16")
P9512D,P9512DA (1/4")
P9512B (1/2")



1

2

3

4

5

SIRUBA
PARTS LIST

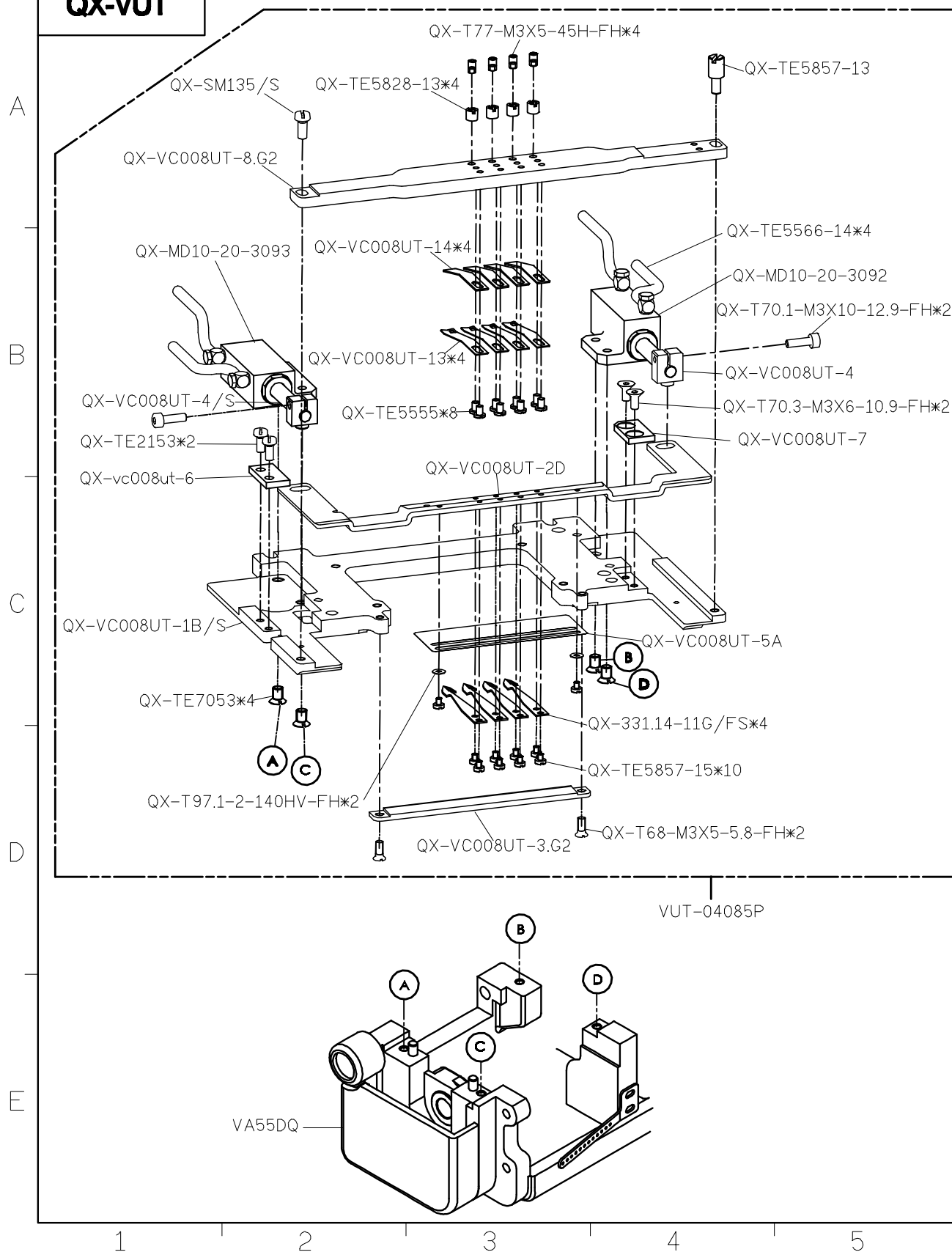
Series
VC008A/B

Parts Group
VUT

Subclass / Remark
● FOR 4 NEEDLE

Page
1/6
Date
2023/04/10

QX-VUT



SIRUBA
PARTS LIST

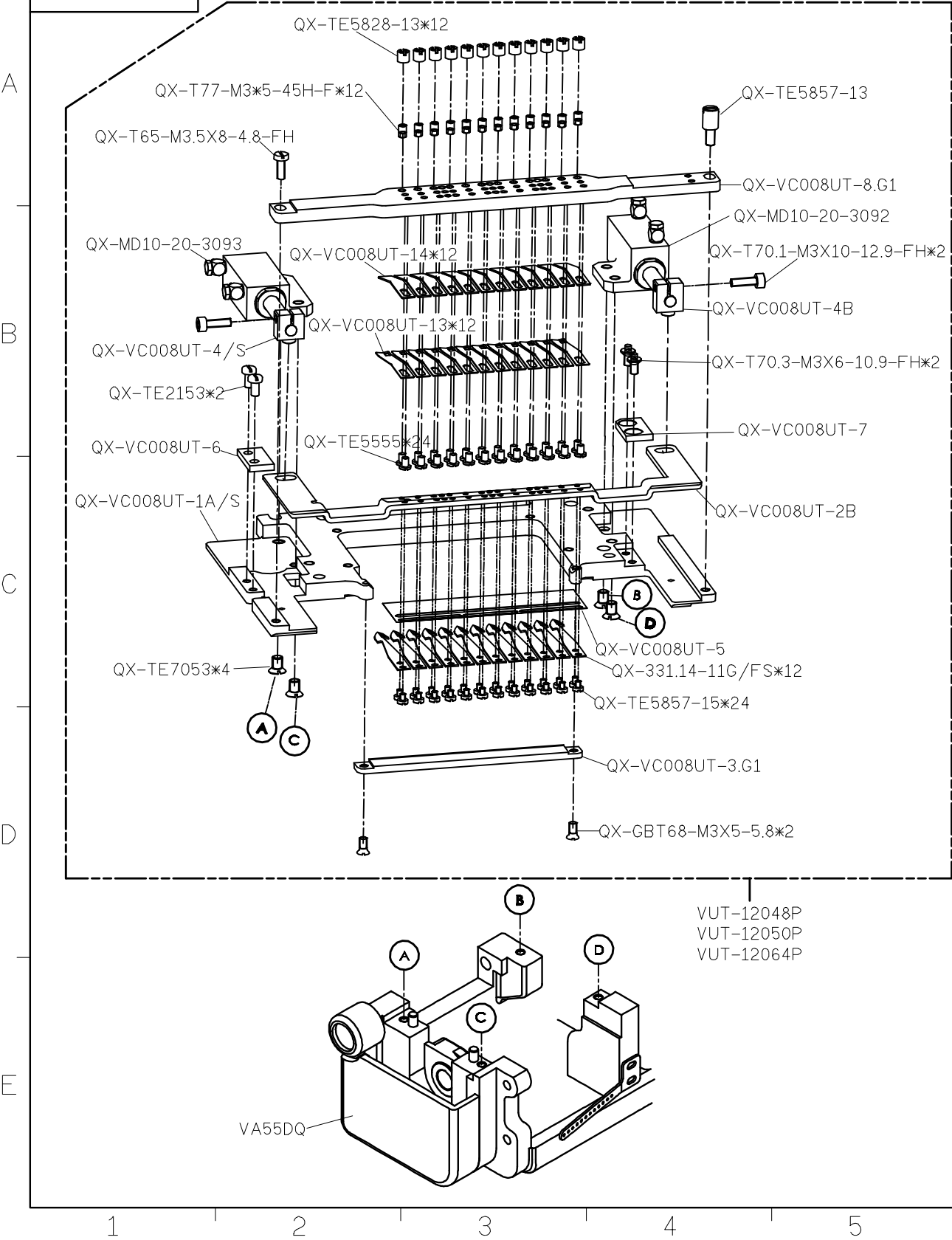
Series
VC008A/B

Parts Group
VUT

Subclass / Remark
● FOR 12 NEEDLE

Page
2/6
Date
2023/04/10

QX-VUT



SIRUBA
PARTS LIST

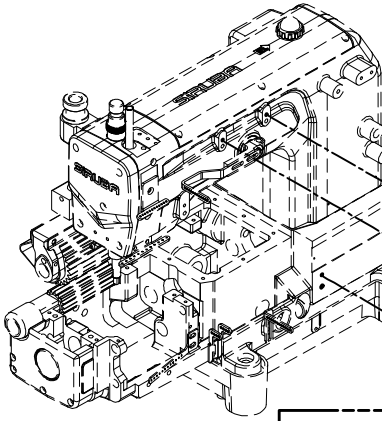
Series
VC008A/B

Parts Group
VUT

Subclass / Remark
● FOR 4/12 NEEDLE

Page
3/6
Date
2023/03/21

QX-VUT



VUT-TTU-A

QX-JK-8009TTU-2A

QX-JK-8009TT-3

QX-T6170-M4-06-Ni

QX-JK-8009TTU-1A

QX-T97.1-4-A14*3

QX-T70.1-M4X6-12.9-Ni

QX-T70.1-M4X12-12.9-Ni*2

QX-PB10X30-U.XC

QX-TE5553-4B

QX-ASL4-M5.JS*2

QX-ASL4-M5.JS*2

QX-PB10X30-U.XC

QX-TE5553-4B

QX-JK-8009TT-1

QX-T6170-M4-06-Ni*2

QX-T97.1-4-A140*3

QX-T70.1-M4X6-12.9-Ni*3

QX-T65-M4X10-5.8-Ni*2

QX-JK-8009TT-3A

QX-JK-8009TT-2B

1

2

3

4

5

SIRUBA PARTS LIST	Series	Parts Group	Subclass / Remark	Page
	VC008A/B	VUT	● FOR 4/12 NEEDLE	4/6
				Date
				2023/03/21
QX-VUT				

VUT-TW-A

QX-T70.1-M4*12-12.9-FH*3

QX-JK-8009TW-1

QX-T77-M3*6-45H-FH

QX-JK-8009TW-2

QX-JK-8009TW-3

QX-vc008sb-1

QX-T70.1-M4*6-12.9-Ni*2

QX-T97.1-4-A140*2

QX-vm1806db-2

VUT-SB-A

VB57
VB57D

SM534

VB13

WMA40

NM511

VB58Q

VC008GD-4A

TE5856-7*2

1

2

3

4

5

