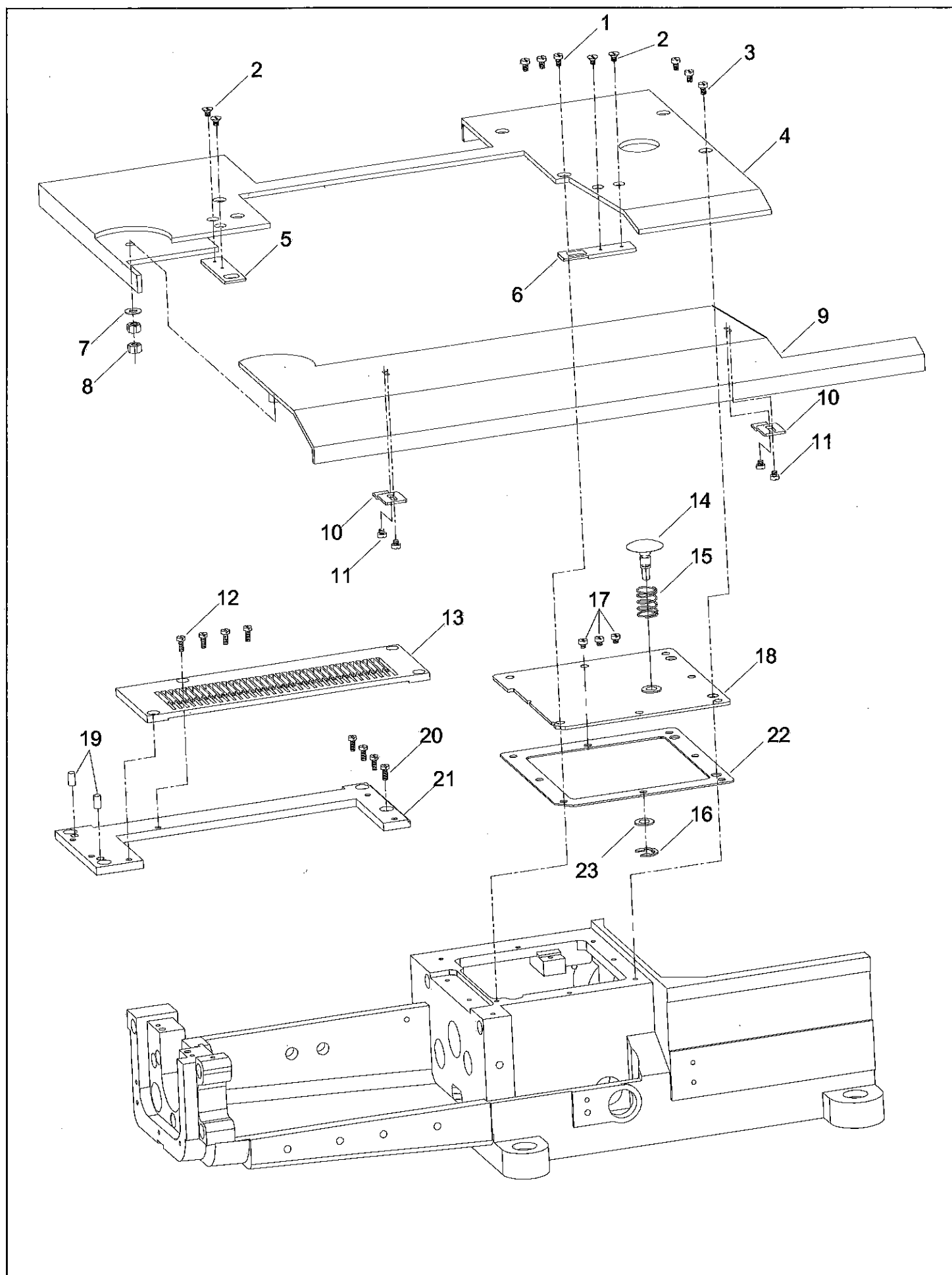
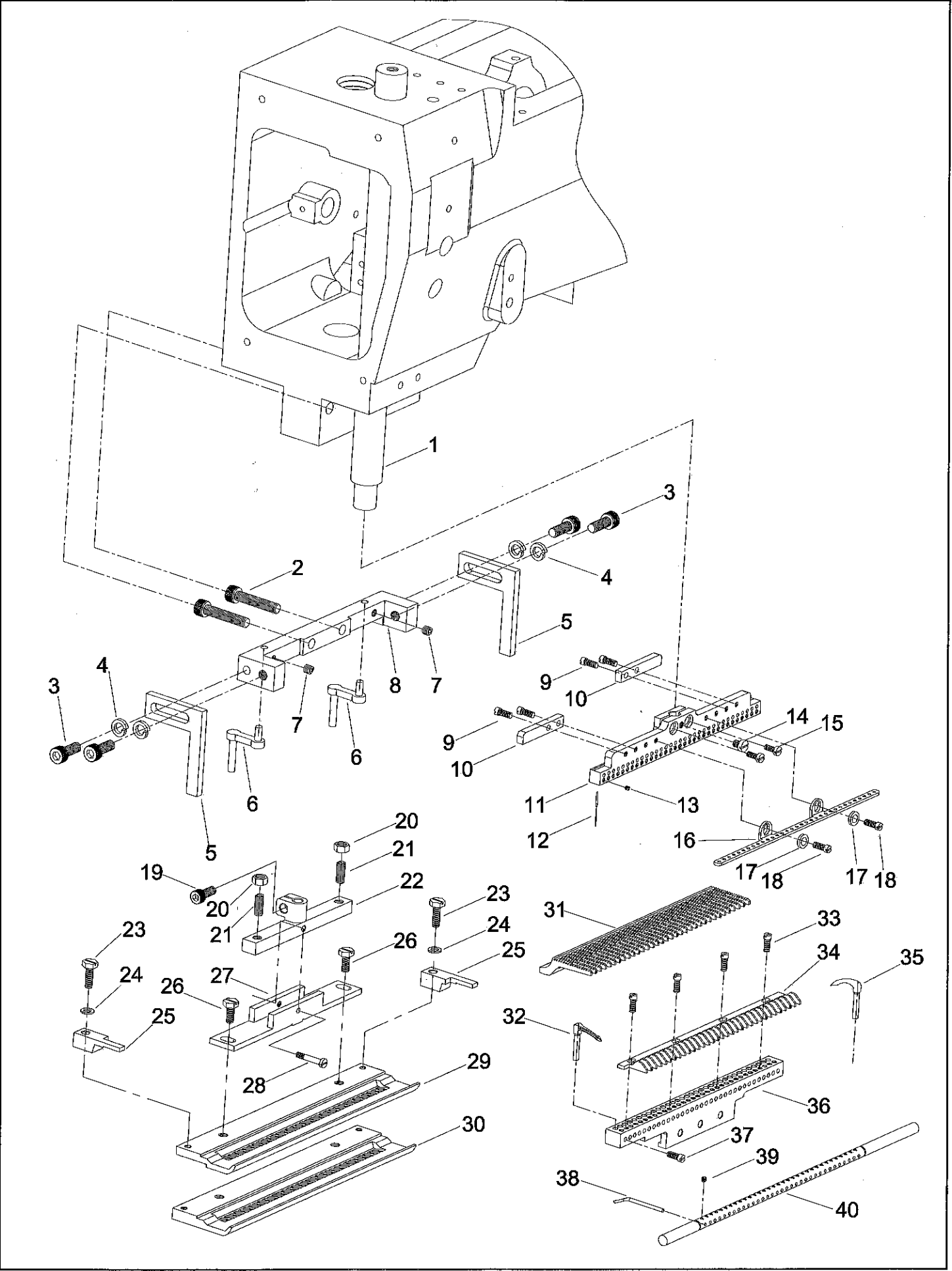


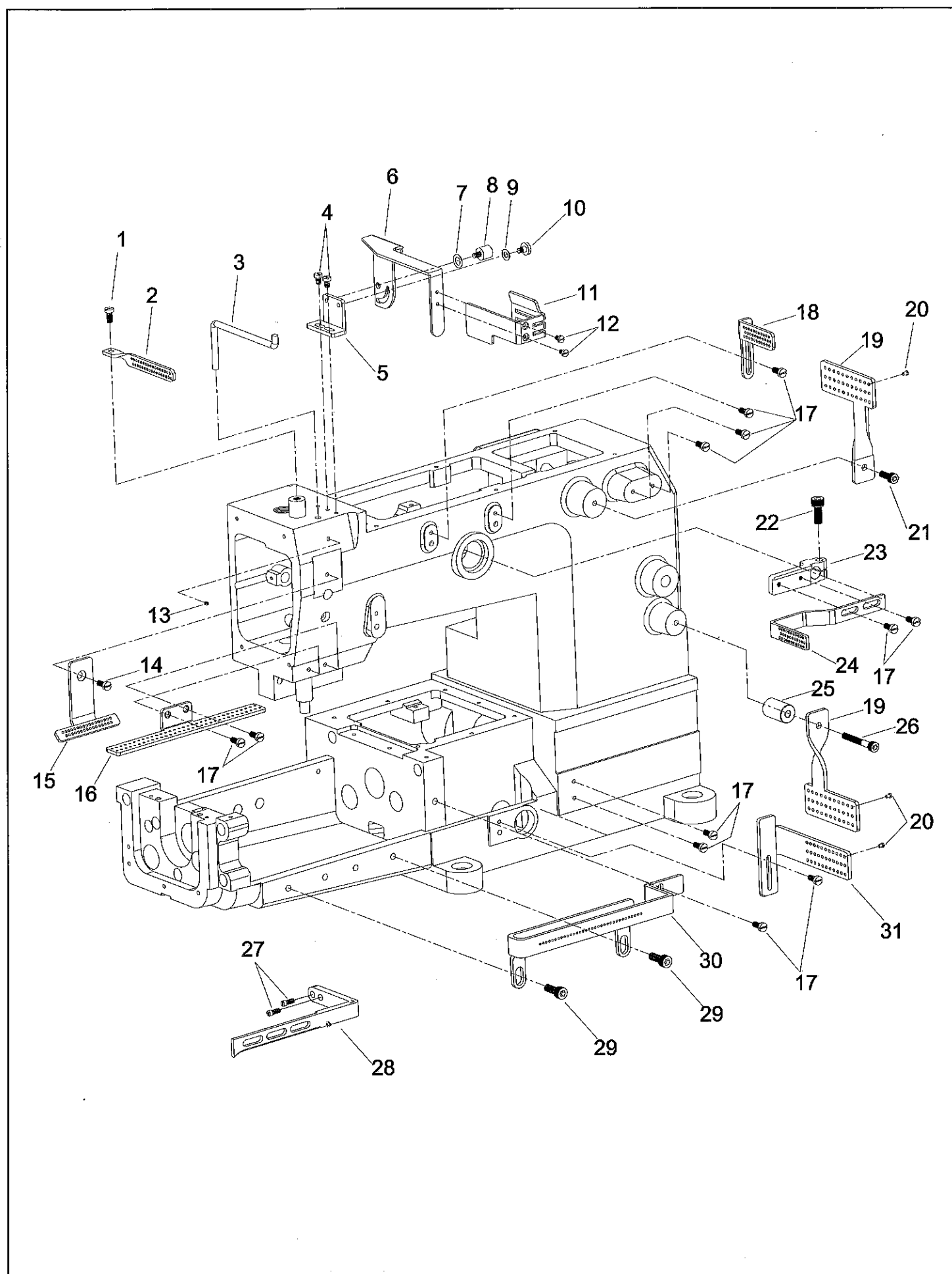
# 一：盖板零件COOERS



二：压脚/针头部件PRESSERFOOT,NEEDLE CLAMP

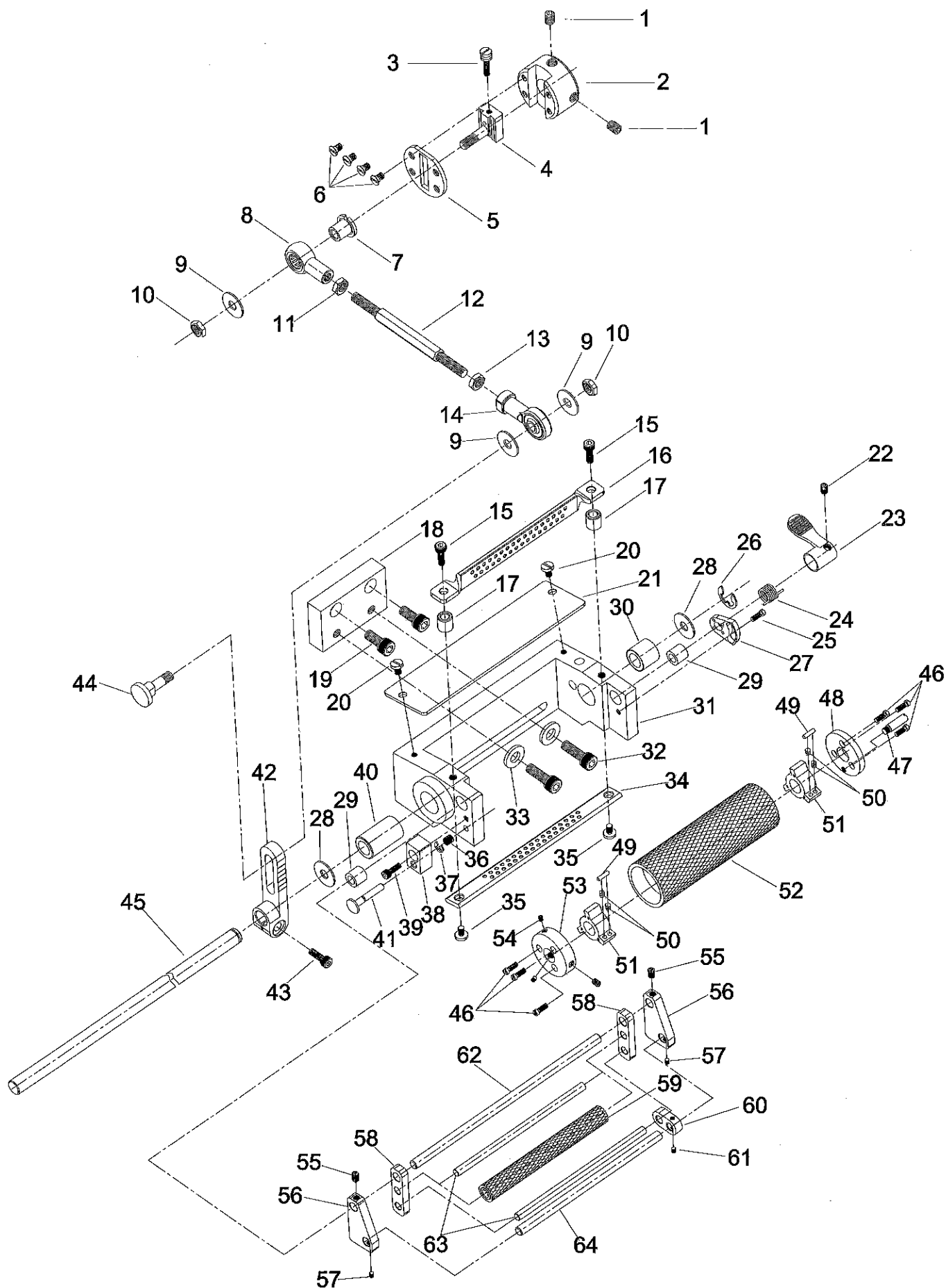


### 三：过线部件THREADEYELETS



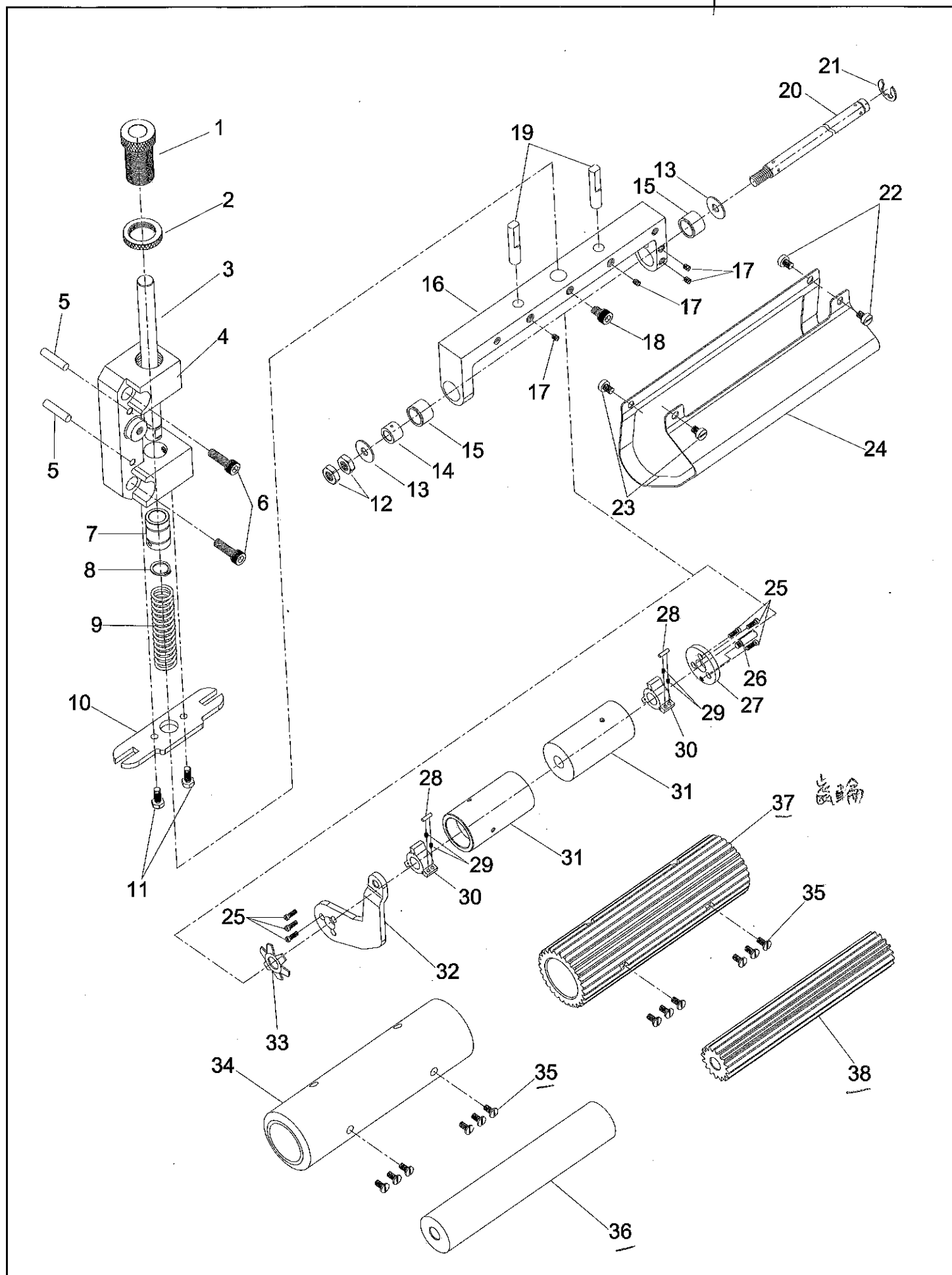
# 四：前拖轮部件FRONT PULLER DEVIOEA

送修

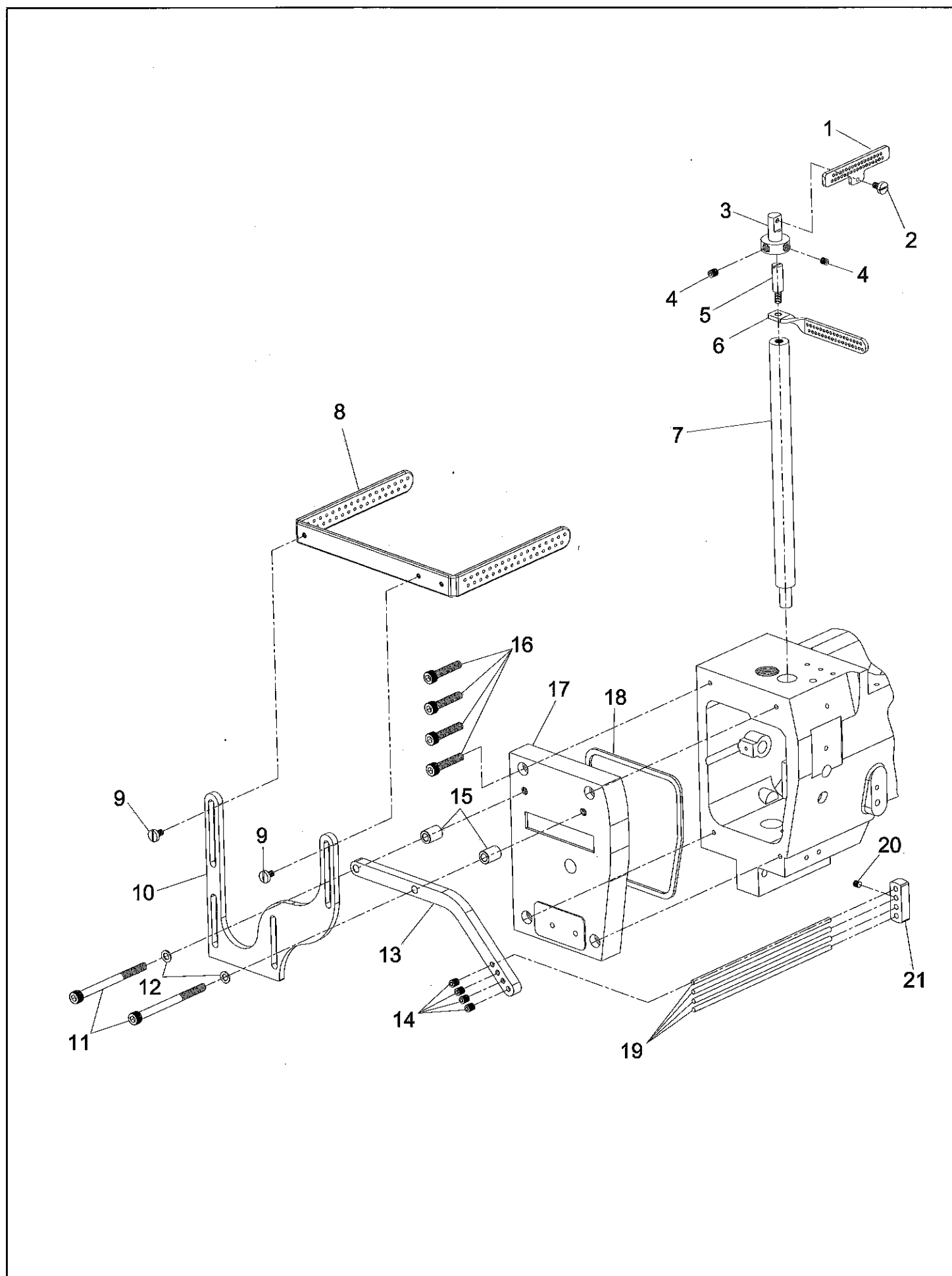


# 五：后拖轮部件BACKPULLER DEVICE

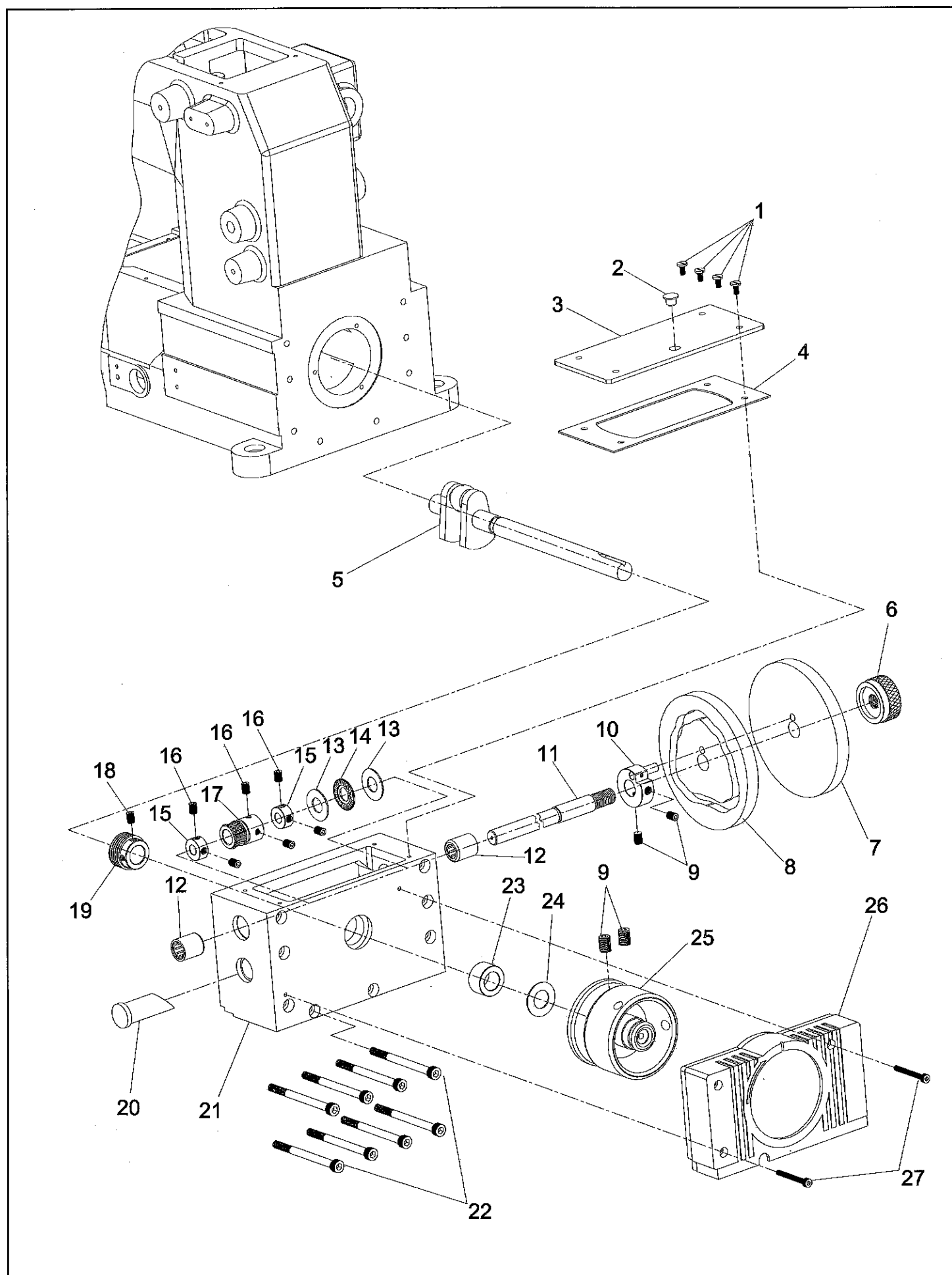
新



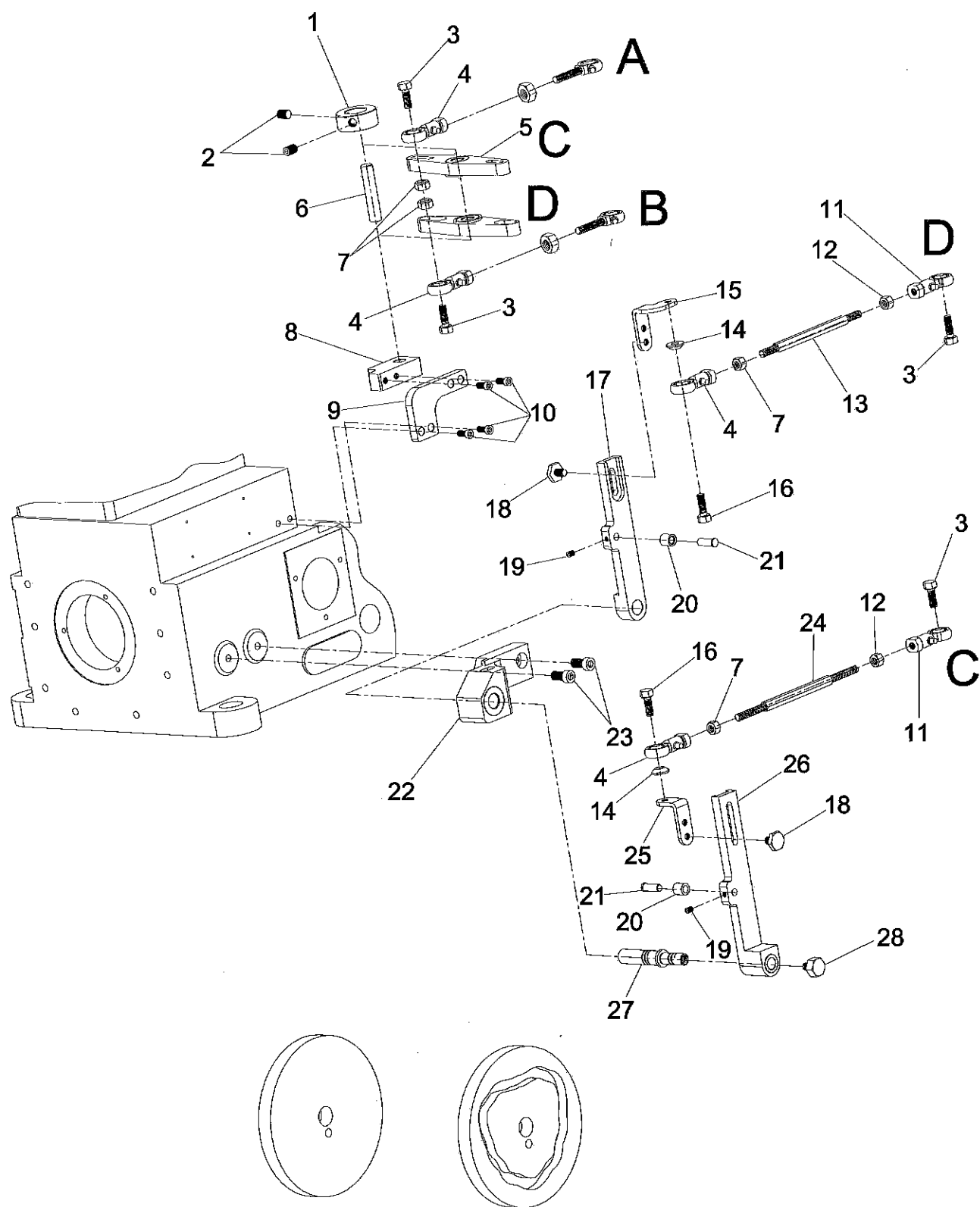
## 六：打缆过线部件THRBAD EYELETS FOR SMOCKING



# 七：打缆部件<一> SMOCKING DEVICE<一>

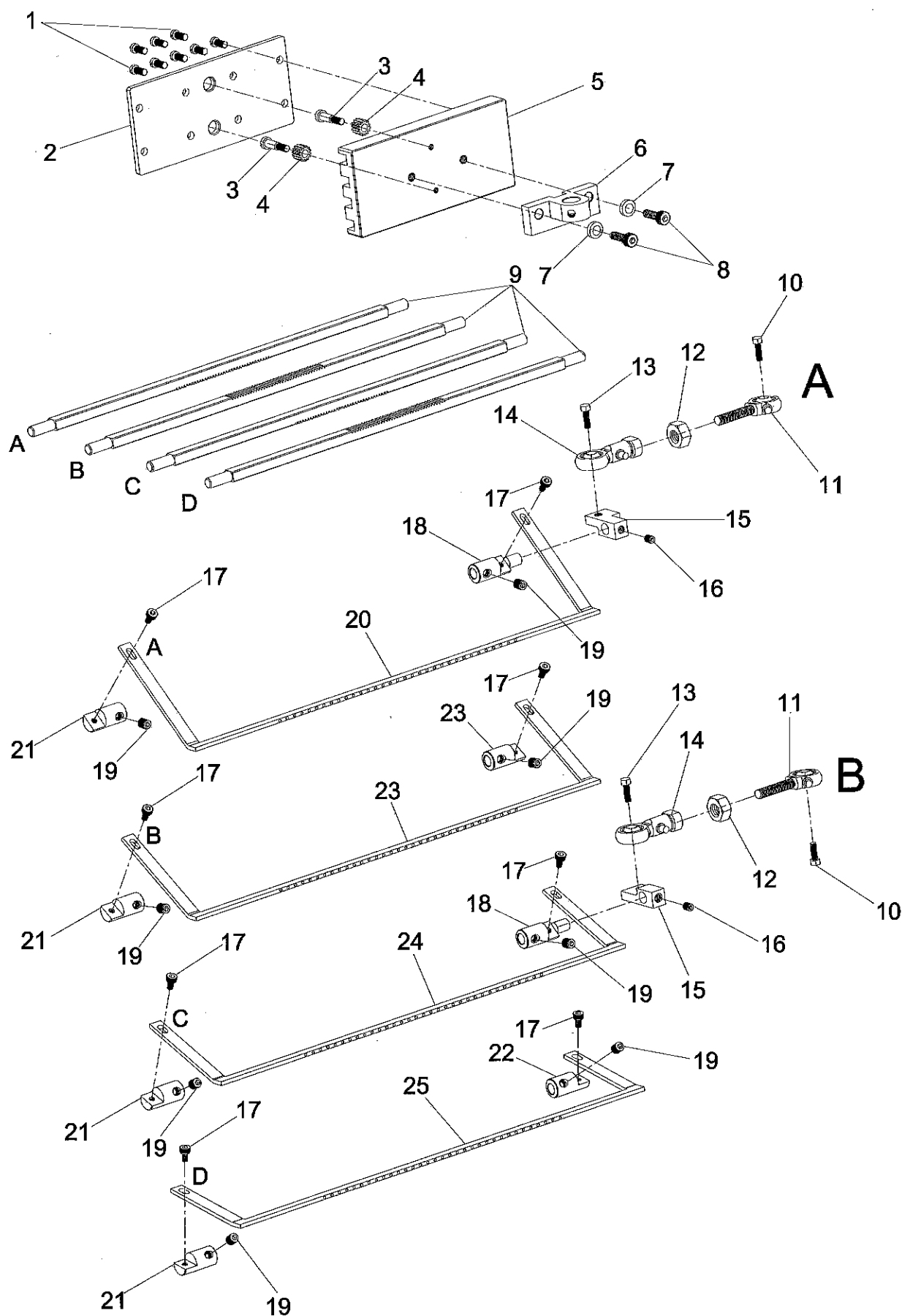


# 八：打缆部件<二> SMOCKING DEVICE<二>

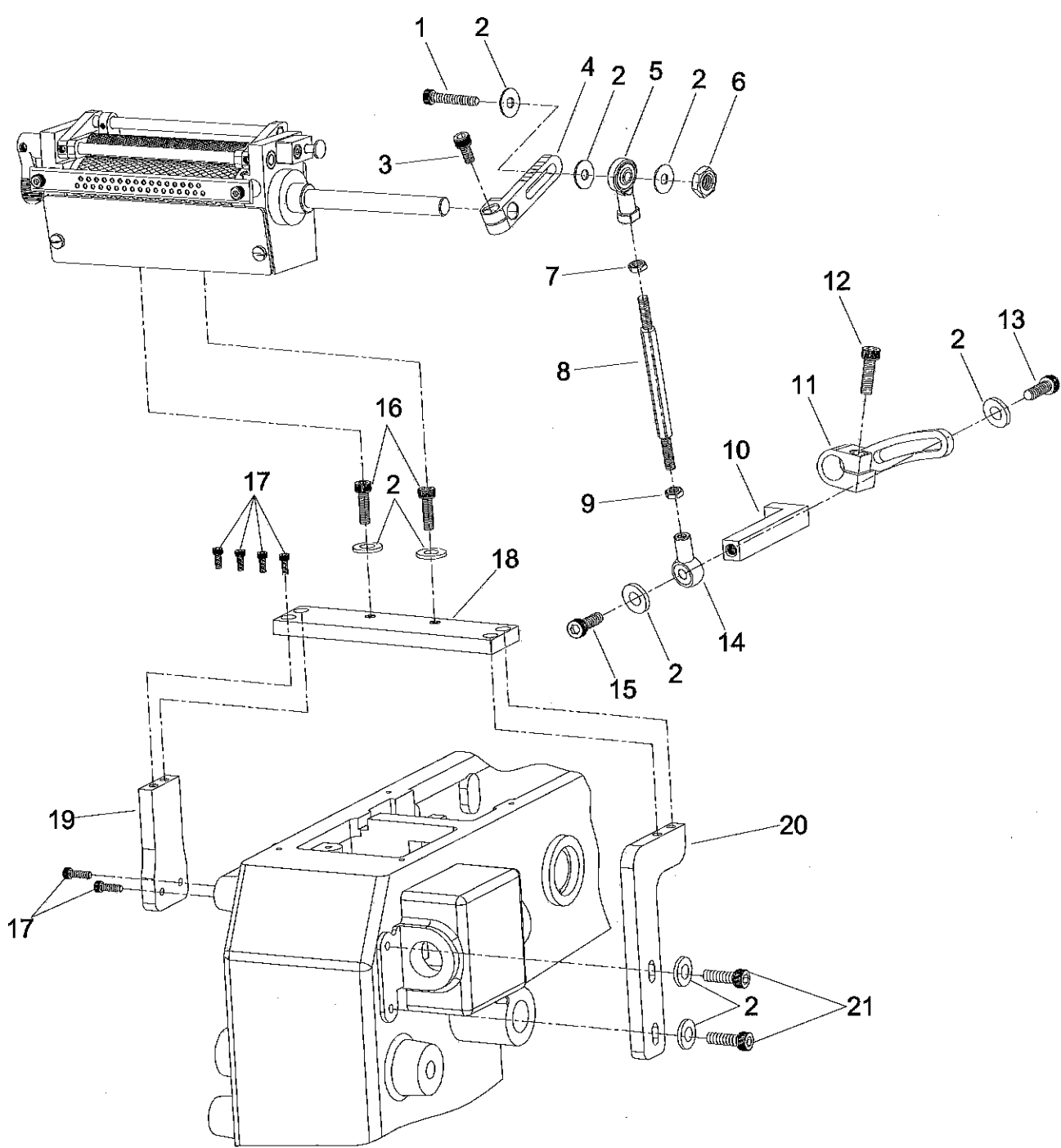




九：打缆部件<三> SMOCKING DEVICE<三>



十：上拖轮组



# 十一：线架分解图

