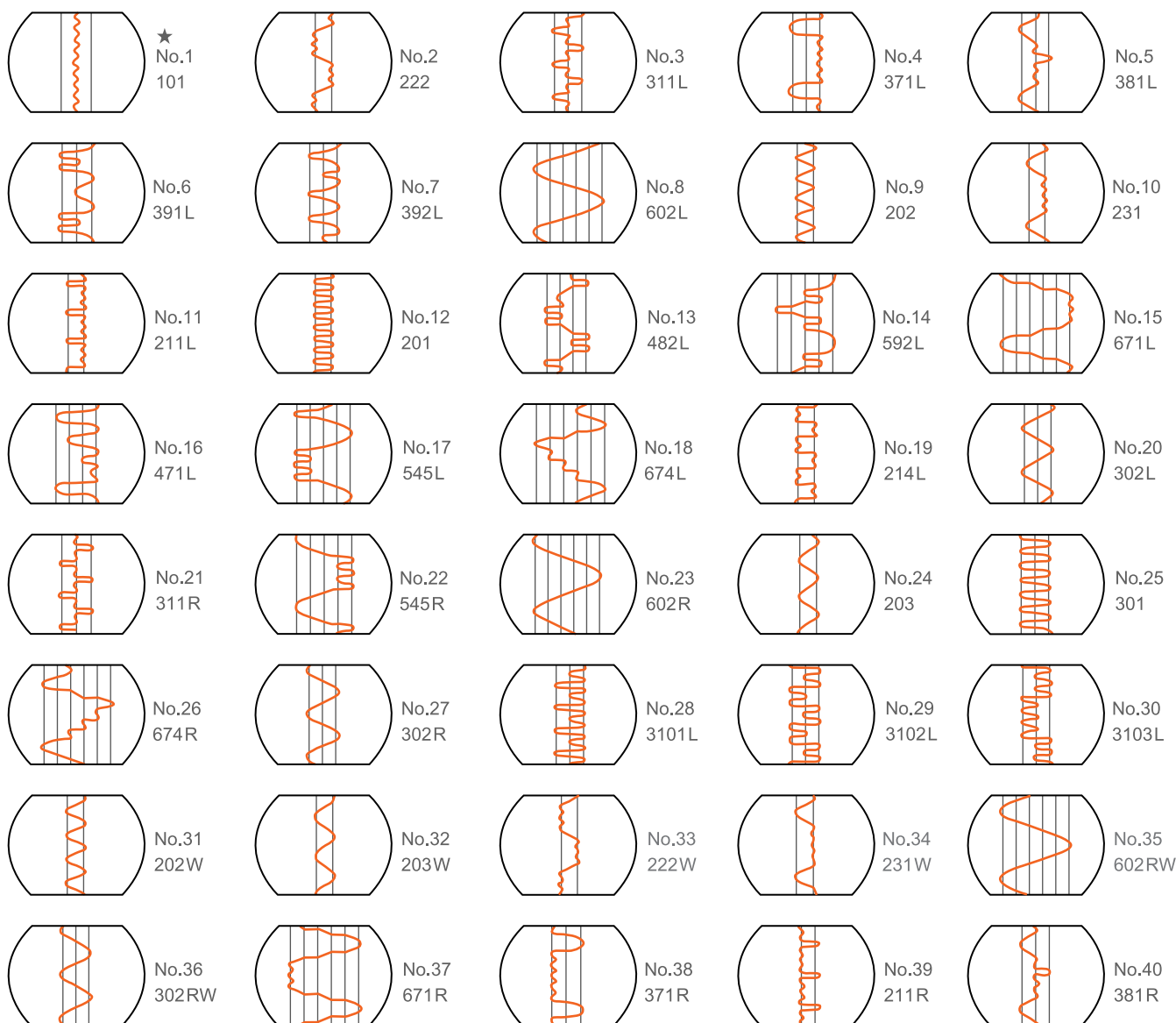


# VC008 (OVER 25 NEEDLES) SERIES

Multineedle cylinder bed double chainstitch machine

## 打攪機花盤圖樣 PATTERN OF CAMS



在更換使用花盤時，花盤編號後帶 " L " 的為控制下面兩層打攪條，應安裝在靠機頭的裡面；花盤編號後帶 " R " 的為控制上面兩層打攪條，應安裝在外面，切記不可倒裝，否則編不出花型。另有花盤編號後帶 " W " 的和 " 101 " " 202 " " 203 " 等花盤為裡外皆可安裝的。

When replacing the face plate, if the code of the face plate added on "L" means it controls the under tow-layered smocking tape, so it should be installed inside and near the machine head. If the code of the face plate added on "R" means it controls the upper two-layered smocking tape, so it should be installed outside. Do not install two kinds of the face plates upside down, or it can't form the right pattern. Besides, there are the codes of the face plate added on "W", "101", "202", and "203", which means they can be installed both inside and outside.

# V C 0 0 8

## 筒型多針縫紉機

Multineedle Cylinder Bed  
Double Chainstitch Machine



【用途】針對於襯衫、女士禮服的平縫，最適合於需要寬幅摺縫服裝品的縫製。

Application: It is suitable for sewing wide stitch or wider interval stitch on skirt, blouse, negligee, etc.

- 適用於服裝抽皺聚攏，並作為裝飾或塑造的技巧  
Ideal for garment ruffling and gathering to create decorative or structural shapes.
- 特別適合精細輕薄的織物  
Perfectly suited for delicate and lightweight fabrics.
- 拉伸性佳、反覆拉伸後也能保持彈性  
Excellent stretchability; maintains elasticity even after repeated stretching.



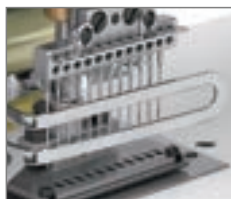
完全自動供油，勾針縱向運動機構，多針雙重鏈式縫

Automatic lubrication system, vertical looper mechanism, multineedle chainstitch mechanism.



採用獨立勾針座，可變化不同的針位元組合，達到一機多用的功能（選配）

Using independent looper holder and can easily change different needle position, Multi-function machine design. (optional)



適用於多種工序的縫紉，適合針織類高級衣物之裝飾車縫

Suitable for multi sewing process, high quality knit material and decorative sewing.



棘輪式滾輪，縫製時拉布與出布更順暢穩定

Ratchet-type rear puller handles the material with better stability.

V1						
			mm	mm	Needle No.	S.P.M. (Max)
VC008-25032P	25	50	1/8"	12	DVX57#14-#16	1500
VC008A-25064P	25	50	1/4"	12	DVX57#14-#16	1500
VC008A-33048P	33	66	3/16"	12	DVX57#14-#16	1500
VC008-38064P	38	76	1/4"	12	DVX57#14-#16	1500
VC008-50032P	50	100	1/8"	12	DVX57#14-#16	1500

### VC008-25/33P



25064P 1/4"



33048P 3/16"



### 多針雙線鏈式縫紉車

針對於襯衫、女士禮服的平縫，最適合於需要的寬幅褶縫服裝品的縫製。

### DOUBLE CHAINSTITCH MACHINE

It is suitable for sewing wide stitch or wider interval stitch on skirt, blouse, negligee, etc.

V2						
			mm	mm	Needle No.	S.P.M. (Max)
VC008-25064PQ2	25	50	1/4"	12	DVX113#11-#14	1500
VC008-33048PQ2	33	66	3/16"	12	DVX113#11-#14	1500
VC008-38064PQ2/A38	38	76	1/4"	10	DVX57#12-#14	900
VC008-50048PQ2/A50	50	100	3/16"	10	DVX57#12-#14	900

### VC008-PQ2



25064PQ2 1/4"



33048PQ2 3/16"



### 彈性線縮褶車

適用於女士各種衣裙腰圍鬆緊打褶。彈性均勻，線跡完美。

### SHIRRING STITCH MACHINE

It is suitable for shirring of all kinds of women's dresses on waist. Perfect stitches with uniform elasticity.

V3						
			mm	mm	Needle No.	S.P.M. (Max)
VC008-25064PQ3	25	75	1/4"	12	DVX57#14-#16	1500
VC008-33048PQ3	33	99	3/16"	12	DVX57#14-#16	1500
VC008-38064PQ3/A38	38	114	1/4"	10	DVX57#12-#14	900
VC008-38048PQ3/A50	50	150	3/16"	10	DVX57#12-#14	900

### VC008-PQ3



25064PQ3 1/4"



33048PQ3 3/16"



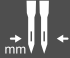





### 彈性線縮褶車

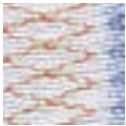
適用於女裝(上衣、裙子)的腰圍、胸圍的鬆緊打褶。彈性柔和，線跡完美。

### SHIRRING STITCH MACHINE

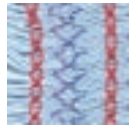
It is suitable for shirring of women's clothes (including dress and shirts) on waist and bust. Beautiful and flexible stitches.

V4					 Needle No.	 S.P.M. (Max)
VC008-16048PQ3M	16	64	3/16"	12	DVX57#14-#16	1500
VC008-25064PQ3M	25	100	1/4"	12	DVX57#14-#16	1500
VC008-33048PQ3M	33	132	3/16"	12	DVX57#14-#16	1500
VC008-38064PQ3M/A38	38	152	1/4"	10	DVX57#12-#14	900
VC008-50048PQ3M/A50	50	200	3/16"	10	DVX57#12-#14	900

### VC008-PQ3M



33048PQ3M 3/16"



25064PQ3M 1/4"



33048PQ3M 3/16"



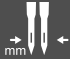





### 彈性線縮褶打攬車

適用於女裝(上衣·裙子)的腰圍·胸圍的鬆緊打褶·打攬。  
可以選擇不同的裝飾線圖案·彈性柔和·線跡柔美。

### SHIRRING SMOCKING STITCH MACHINE

It is suitable for shirring and smocking of women's clothes (including dresses and shirts) on waist and bust. Various Ornamental stitch patterns can be chosen. Beautiful and flexible stitches.

V5					 Needle No.	 S.P.M. (Max)
VC008-25064PQS	25	25	1/4"	12	DVX57#14-#16	1500
VC008-33048PQS	33	33	3/16"	12	DVX57#14-#16	1500
VC008-38064PQS/A38	38	38	1/4"	10	DVX57#12-#14	900
VC008-50048PQS/A50	50	50	3/16"	10	DVX57#12-#14	900

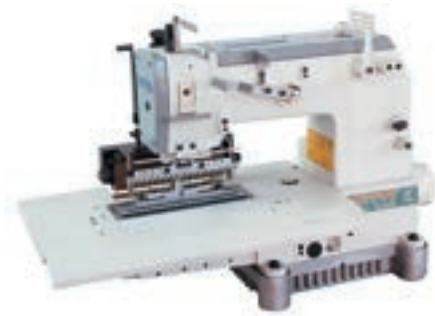
### VC008-PQS



25064PQS 1/4"



33048PQS 3/16"



### 彈性線(無底線)多針

單線鏈式多針車·適用於女士裙子腰圍鬆緊帶打褶·也適用於童裝打褶。鬆緊均勻線跡完美。

### SHIRRING STITCH MACHINE (NO LOWER THREAD)

Single thread, multi-needle machine. It is suitable for sewing ornamental shirring with elastic thread on women's dresses and children's clothes. Perfect stitches with uniform elasticity.

V6						
VC008-25064PQSM	25	50	1/4"	12	DVX57#14-#18	1500
VC008-33048PQSM	33	66	3/16"	12	DVX57#14-#18	1500
VC008-38064PQSM/A38	38	76	1/4"	10	DVX57#12-#14	900
VC008-50048PQSM/A50	50	100	3/16"	10	DVX57#12-#14	900

### VC008-PQSM



25064PQSM 1/4"



25064PQSM 1/4"



33048PQSM 3/16"



25064PQSM 1/4"



### (無底線)打攪

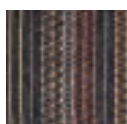
PQSM 是無底線打攪縫紉機，因面線是彈性線單線連縫，所以能適用於薄針織品，及各種薄布物料，至於圖案，就可以利用備用各種各樣花盤，再與彈性線搭配起來，可以創造出為數不少令人吸引的圖案。

### (NO LOWER THREAD)SMOCKING MACHINE

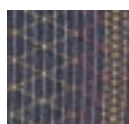
PQSM is the smocking stitch without lower thread machine. Because the upper stitch is sewing by elastic thread, it is suitable for thin materials or light knitwear. By combining various cams with ornamental thread, it is practicable to make varied attractive patterns.

V7						
VC008-25064PSM	25	75	1/4"	12	DVX57#14-#16	1500
VC008-33048PSM	33	99	3/16"	12	DVX57#14-#16	1500
VC008-33064PSM/A38	38	114	1/4"	10	DVX57#12-#14	900
VC008-50048PSM/A50	50	150	3/16"	10	DVX57#12-#14	900

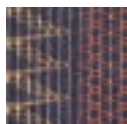
### VC008-PSM



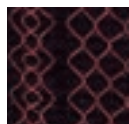
33048PSM 3/16"



33048PSM 3/16"



33048PSM 3/16"



25048PSM 3/16"



### 裝飾線打攪車

適用於各種襯衫，衣裙，童裝的裝飾縫。也適用於各種床上用品的裝飾縫，可選配不同的花盤，縫出想要的圖案。

加裝附件：打攪器，各種型號花盤。

### ORNAMENTAL THREAD SMOCKING MACHINE

It is suitable for ornamental stitches on women's & children's wear, skirts, fashions, bedclothes, etc..Stitching patterns can be chosen by varied cams.

Attachment : Smocking device and varies cams.

V8						
VC008-25064PTV	25	50	1/4"	12	DVX57#11-#14	1500
VC008-33048PTV	33	66	3/16"	12	DVX57#11-#14	1500

### VC008-PTV



25064PTV 1/2"



33048PTV 3/8"



### 襯衫打褶車

此台PTV機器可以對服飾，床上用品及各種裝飾用品打褶，在針位以內的打褶寬度可以任意挑選。

### SHIRT PINTUCKINGS STITCH MACHINE

PTV machine is suitable for tucking on all kinds of products. Any size of tucking within the width of needle gauge can be chosen.

# V9



Needle No.

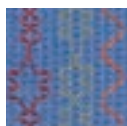


VC008-16048PSSM	16	48	3/16"	12	DVX57#14-#16	1500
VC008-25064PSSM	25	75	1/4"	12	DVX57#14-#16	1500
VC008-33048PSSM	33	99	3/16"	12	DVX57#14-#16	1500
VC008-38064PSSM/A38	38	114	1/4"	10	DVX57#12-#14	900
VC008-50048PSSM/A50	50	150	3/16"	10	DVX57#12-#14	900

## VC008-PSSM



33048PSSM 3/16"



33048PSSM 3/16"



25064PSSM 1/4"



33048PSSM 3/16"



## 彈性線縮褶打攬車

適用於女裙打褶·連衣裙等腰邊鬆緊打褶。也適用於各種童裝·床上用品的裝飾縫。鬆緊均勻·線跡完美。可選配不同的花盤縫出想要的圖案。

## SHIRRING SMOCKING STITCH MACHINE

Suitable for stitching smocking with shirring on waist of skirt, fashion, children's clothes, bedclothes, etc.. Stitching patterns can be chosen by various cams.

加裝附件：大小前托輪、各種型號花盤。  
Attachment : pullers and various cams.

# V10



Needle No.



VC008-16048PQT	16	32	3/16"	12	DVX57#14-#16	1500
VC008-25064PQT	25	50	1/4"	12	DVX57#14-#16	1500
VC008-33048PQT	33	66	3/16"	12	DVX57#14-#16	1500

## VC008-PQT



33048PQT 3/16"



33048PQT 3/16"



25064PQT 1/4"



## 彈性線車

適用於女士各種衣裙等腰圍胸圍的打褶。鬆緊均勻·線跡完美。

## SHIRRING STITCH MACHINE

It is suitable for shirring of women's clothes (including dresses and shirts) on waist and bust. Beautiful and flexible stitches.

# V11



Needle No.

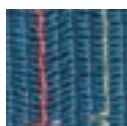


VC008-25064PQTM	25	75	1/4"	12	DVX57#14-#16	1500
VC008-33048PQTM	33	99	3/16"	12	DVX57#14-#16	1500

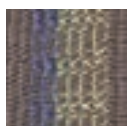
## VC008-PQTM



33048PQTM 3/16"



25064PQTM 1/4"



33048PQTM 3/16"



## 打攬車

適用於女裝(上衣·裙子)的腰圍·胸圍的鬆緊打褶·打攬。可以選擇不同的裝飾線條圖案·彈性柔和·線跡柔美。

## SMOCKING MACHINE

It is suitable for shirring and smocking of women's clothes (including dresses and shirts) on waist and bust. Various Ornamental stitch patterns can be chosen. Beautiful and flexible stitches.

機型 Model	品名 Name	備註 Remark
VC008-25/33P	25/33 針 · 雙線鏈式縫紉車 25/33 needle, double chainstitch machine	後拉滾輪 · 一般縫紉 Rear puller, general seaming.
VC008-PQ2(1/4)	25/33/38/50 針 · 彈性線縮褶車 25/33/38/50 needle, shirring stitch machine	上線普通 · 下線彈性線 · 加前輪 The upper thread is the general thread, the lower thread is the elastic thread, the front wheel is attached.
VC008-PQ3(1/4)	25/33/38/50 針 · 彈性線縮褶車 25/33/38/50 needle, shirring stitch machine	上線普通 · 下線普通 · 布的下面包彈性線 The upper thread is the general thread, the lower thread is the general thread, the elastic thread is underneath the cloth.
VC008-PQ3M(1/4)	16/25/33/38/50 針 · 彈性線縮褶打攪車 16/25/33/38/50 needle, shirring smocking stitch machine	上線普通 · 下線普通 · 布的下面包彈性線 · 打攪 The upper thread is the general thread, the lower thread is the general thread, the elastic is underneath the cloth, smocking.
VC008-PQS(1/4)	25/33/38/50 針 · 彈性線 (無底線) 多針車 25/33/38/50 needle, no lower thread shirring stitch machine	無底線 No lower thread.
VC008-PQSM(1/4)	25/33/38/50 針 · 無底線打攪車 25/33/38/50 needle, no lower thread smocking machine	無底線 · 打攪 No lower thread, smocking.
VC008-PSM/PTV(1/4)	25/33 針 · 打攪打褶綜合車 25/33 needle, smocking pintucking machine	打折 (25 條) 可打折寬度 1-2mm Pintucking (25 lines), the width of pintucking is 1~2mm.
VC008-PSM/PL(1/4)	25/33/38/50 針 · 打攪貼條綜合車 25/33/38/50 needle, smocking tape-attaching machine	上下普通線打攪 · 同時加運動貼條 The upper thread is the general thread, the lower thread is general thread, smocking the tape is attached simultaneously.
VC008-PSM (1/4)	25/33/38/50 針 · 裝飾線打攪車 25/33/38/50 needle, ornamental thread smocking machine	上線普通 · 下線普通 · 打攪 The upper thread is the general thread, the lower thread is the general thread, smocking.
VC008-PSSM(1/4)	16/25/33 針 · 彈性線縮褶打攪車 16/25/33 needle, shirring smocking stitch machine	上線普通 · 下線彈性線 · 打攪 · 加前輪 The upper thread is the general thread, the lower thread is the elastic thread, smocking, the front wheel is attached.
VC008-PTV(1/4)	25/33 針 · 襯衫打褶車 25/33 needle, shirts pintucking machine	打折 (25 條) 可打折寬度 1-2mm Pintucking (25 lines), the width of pintucking is 1~2mm.
VC008-PQT	25/33 針 · 彈性線車 25/33 needle, shirring stitch machine	上線普通 · 無底線 · 布的下面包彈性線 The upper thread is the general thread, no lower thread, the elastic underneath the cloth.
VC008-PQTM	25/33 針 · 打攪車 25/33 needle, smocking stitch machine	上線普通 · 無底線 · 布的下面包彈性線打攪 The upper thread is the general thread, no lower thread, the elastic underneath the cloth, smocking.

# DEVICE

機型 Model	上線 Upper (Needle) Thread	下線 Lower (Looper) Thread	布下面包彈性線 Extra Elastic Thread Under Fabric	前輪 Front Puller	打攪裝置 Smocking Device	備註 Remark
P	普通 Cotton	普通 Cotton	--	--	--	
PQ2	普通 Cotton	彈性線 Elastic	--	有 Yes	--	
PQ2R	普通 Cotton	--	布上面 Upper Textile	有 Yes	有 Yes	
PQS	彈性線 Elastic	--	--	選配 Optional	--	粗彈性線 Thick Elastic Thread
PQSM	彈性線 Elastic	--	--	選配 Optional	有 Yes	
PSM	普通 Cotton	普通 Cotton	--	--	有 Yes	
PSSM	普通 Cotton	彈性線 Elastic	--	有 Yes	有 Yes	
PQ3	普通 Cotton	普通 Cotton	有 Yes	有 Yes	--	
PQ3M	普通 Cotton	普通 Cotton	有 Yes	有 Yes	有 Yes	
PTV	普通 Cotton	普通 Cotton	--	--	--	打褶裝置 With Pin-tucking Device
PSM+PTV	普通 Cotton	普通 Cotton	--	--	有 Yes	打褶裝置 With Pin-tucking Device
PQT	普通 Cotton	--	有 Yes	有 Yes	--	
PQTM	普通 Cotton	--	有 Yes	有 Yes	有 Yes	