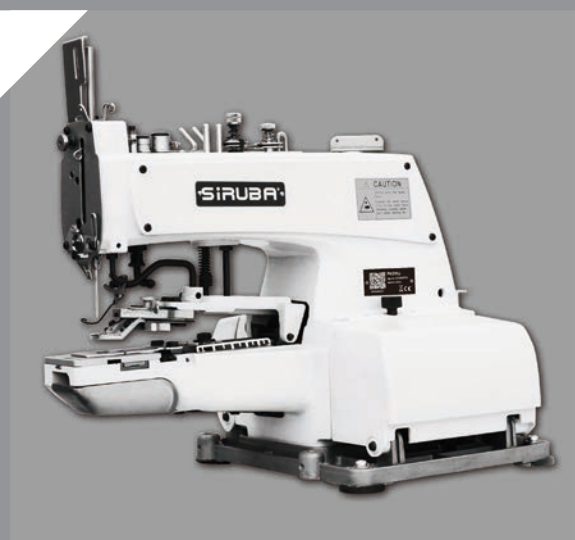


SIRUBA

零件圖

PARTS LIST

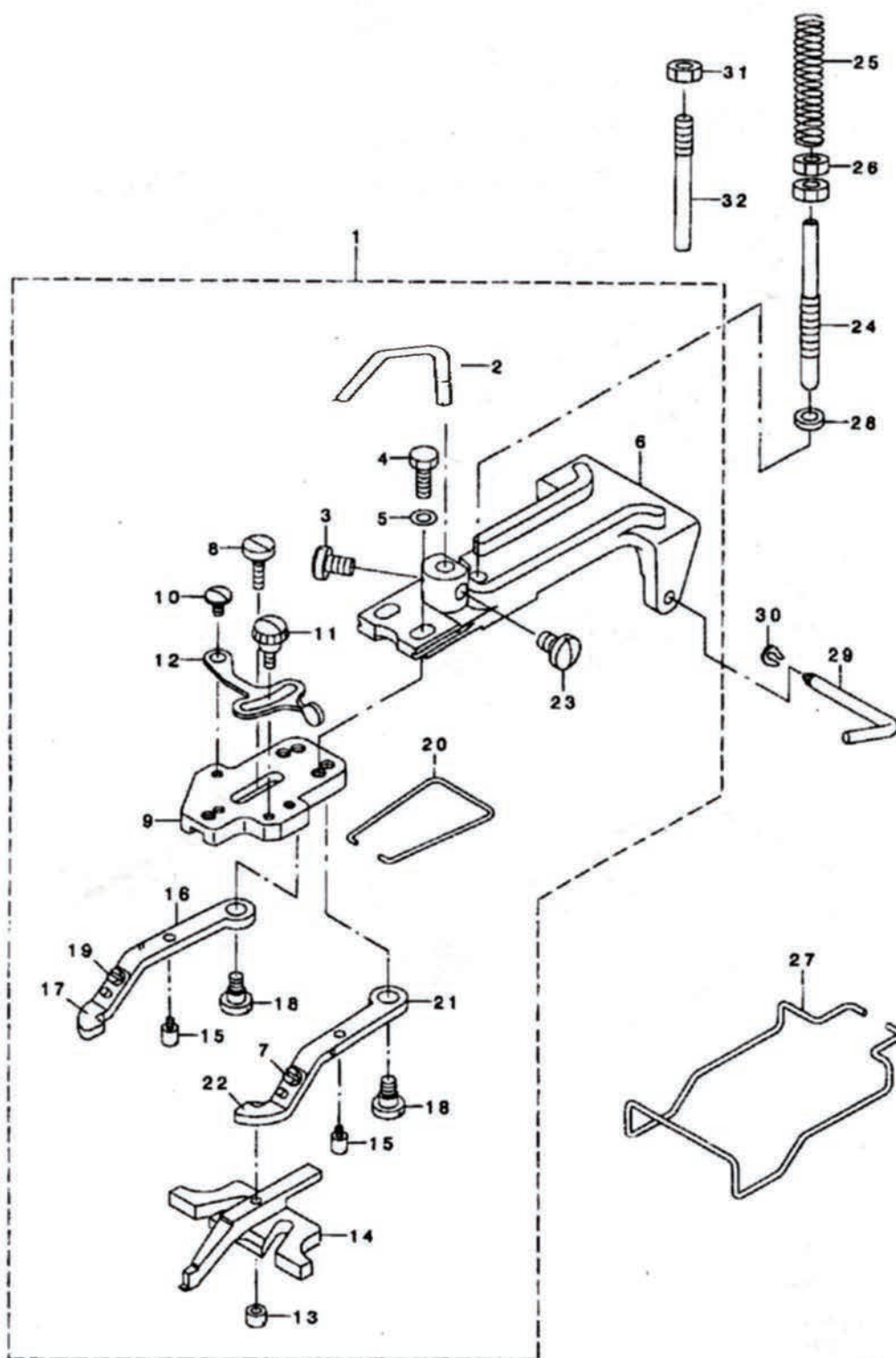
■ PK511J



CE EAC

零件冊 PARTS BOOK

1.平扣夾組結構	BUTTON CLAMP MECHANISM COMPONENTS	42
2.機體及蓋板結構	ARM&MISCELLANEOUS COVERS COMPONENTS	44
3.軸套及勾綫結構	LOOPER SHAFT MECHANISM COMPONENTS	46
4.綫夾及過綫傳動結構	NIPPER&THREAD TENSION PARTS COMPONENTS	48
5.位移板. 定位移位部份結構	FEED PLATE COMPONENTS	50
6.鈕扣夾提放結構	BUTTON CLAMP LIFTER COMPONENTS	52
7.皮帶輪.軸結構	NEEDLE DRIVING PULLEY COMPONENTS	54
8.針柱傳動結構	BOBBIN THREAD TRIMMER COMPONENTS	56
9.停車止動結構	STOP MOTION MECAHNISM COMPONENTS	58
10.摩擦板止動凸輪結構	STITCH SELECTING PARTS COMPONENTS	60
11.PK511J-NS專用另件	THREAD BING NOTCH COMPONENTS(FOR PK511J-NS)	62
12.附屬品關係	ACCESSORIES PARTS COMPONENTS	64
13. PK511J-T2桌板圖	PK511J-T2 Table board drawings	66

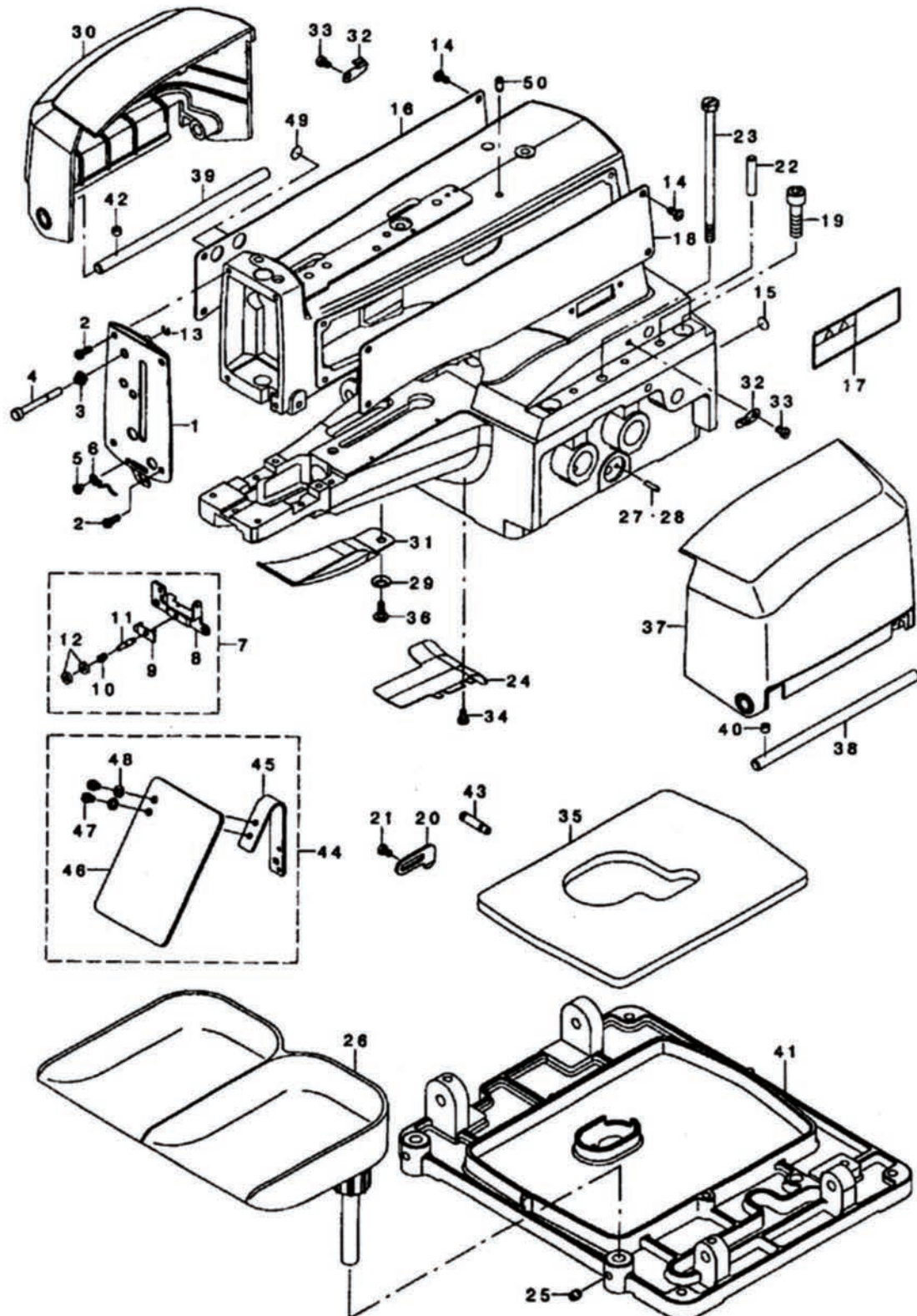


SIRUBA PARTS LIST	Series	Subject	Page
	PK511J	BUTTON CLAMP MECHANISM COMPONENTS 平扣夾組結構	2 / 2
			Date
			2014/06/17

No	note	Parts No.	DESCRIPTION	Qty
1		K01-000001	PICK-UP DEVICE ASM. 扁平鈕扣夾組	1
2		K01-000002	BUTTON CLAMP LIFTING HOOK 鈕扣夾提升桿	(1)
3		K01-000003	SCREW 15/64-28 L=9 螺釘	(1)
4		K01-000004	SCREW 3/16-32 L=13.5 螺釘	(2)
5		K01-000005	WASHER 5X10.5X1 墊圈	(2)
6		K01-000006	BUTTON CLAMP HOLDER 鈕扣夾底座	(1)
7		K01-000007	SCREW 9/64-40 L= 3.5 螺釘	(1)
8		K01-000008	HINGE SCREW D=5.5 H=3 合頁螺釘	(1)
9		K01-000009	JAW LEVER HOLDER 鈕扣夾底座	(1)
10		K01-000010	HINGE SCREW D= 5.50 H= 1.8 合頁螺釘	(1)
11		K01-000011	CLAMP SCREW A 合頁螺釘	(1)
12		K01-000012	SNAP FASTENER CLAMP STOP LEVER 鈕扣夾止位片	(1)
13		K01-000013	NUT 螺帽	(1)
14		K01-000014	BUTTON CLAMP SLIDE 扣夾滑動件	(1)
15		K01-000015	BUTTON CLAMP STOP PIN 螺柱	(2)
16		K01-000016	BUTTON CLAMP LEVER JAW (LEFT) 扣夾桿爪 左	(1)
17		K01-000017	BUTTON HOLDING SPRING LEFT 固定彈片 左	(1)
18		K01-000018	HINGE SCREW D= 6.35 H= 3.9 合頁螺釘	(2)
19		K01-000019	SCREW 9/64-40 L= 3.5 螺釘	(1)
20		K01-000020	BUTTON CLAMP SPRING 鈕扣夾彈簧	(1)
21		K01-000021	BUTTON CLAMP LEVER JAW RIGHT 扣夾桿爪 右	(1)
22		K01-000022	BUTTON HOLDING SPRING RIGHT 固定彈片 右	(1)
23		K01-000023	SCREW 15/64-28 L=9 螺釘	(1)
24		K01-000024	BUTTON CLAMP PRESSURE ADJUSTIN 壓力調節螺釘	1
25		K01-000025	PRESSURE ADJUSTING SPRING 壓力調節彈簧	1
26		K01-000026	NUT M6 螺帽	2
27		K01-000027	FINGER GUARD SPRING 護手彈簧	1
28		K01-000028	SPRING HOLDING PLATE 墊圈	1
29		K01-000029	HINGE PIN 插銷	1
30		K01-000030	SNAP RING 止動環	1
31		K01-000031	NUT M6 螺帽	1
32		K01-000032	PICK_UP_DEVICE_STOPPER_PIN 扣夾止動銷	1

1_ /

SIRUBA PARTS LIST	Series	Subject	Page
	PK511J	ARM & MISCELLANEOUS COVER COMPONENTS 機體及蓋板結構	1 / 2
			Date
			2014/06/17



SIRUBA PARTS LIST	Series	Subject	Page
	PK511J	ARM & MISCELLANEOUS COVER COMPONENTS 機體及蓋板結構	2 / 2
			Date
			2014/06/17

No	note	Parts No.	DESCRIPTION	Qty
1		K02-000001	FACE_PLATE_COMPL	1
2		K02-000002	SCREW	4
3		K02-000003	TENSION SPRING	1
4		K02-000004	NIPPER RELEASING STUD	1
5		K02-000005	SCREW	1
6		K02-000006	THREAD GUIDE NO.4	1
7		K02-000007	THREAD TENSION NO.3 ASM.	1
8		K02-000008	TENSION ADJUSTING BASE NO.3	(1)
9		K02-000009	THREAD PRESSER PLATE	(1)
10		K02-000010	TENSION SPRING B	(1)
11		K02-000011	THREAD TENSION STUD	(1)
12		K02-000012	THREAD TENSION NUT	(2)
13		K02-000013	E-RING 2	(1)
14		K02-000014	SCREW	8
15		K02-000015	RUBBER PLUG	1
16		K02-000016	SIDE_COVER_RIGHT	1
17		K02-000017	SAFETY LABEL	1
18		K02-000018	SIDE_COVER_LEFT	1
19		K02-000019	SCREW M8 L=30	4
20		K02-000020	STOPPER	1
21		K02-000021	SCREW M5 L=8	2
22		K02-000022	GUIDE PIN	2
23		K02-000023	SET SCREW	1
24		K02-000024	BED_OIL_SHIELD	1
25		K02-000025	SCREW	1
26		K02-000026	BUTTON_TRAY_ASM.	1
27	#01	K02-000027	CAM INDICATING PIN A	2
28	#01	K02-000028	CAM INDICATING PIN B	2
29		K02-000029	SPRING WASHER 6.5X14.0X17	1
30		K02-000030	SIDE_COVER_LEFT	1
31		K02-000031	LOOPER_COVER	1
32		K02-000032	SIDE_COVER_SPRING	2
33		K02-000033	SCREW M4 L=6	2
34		K02-000034	SCREW	2
35		K02-000035	OIL_DRIP_FELT	1
36		K02-000036	SHOULDER SCREW D=6 H=2.7	1
37		K02-000037	SIDE_COVER_RIGHT	1
38		K02-000038	SIDE_COVER_HINGE_SHAFT_RIGHT	2
39		K02-000039	SIDE_COVER_HINGE_SHAFT_LEFT	1
40		K02-000040	SCREW M6 L=6	1
41		K02-000041	MACHINE_SUB_BASE	1
42		K02-000042	SCREW M6 L=6	1
43		K02-000043	SUSPENSION SCREW_B	1
44		K02-000044	ASSY SAFETY PLATE	1
45		K02-000045	SAFETY PLATE INSTALLING BASE	(1)
46		K02-000046	SAFETY PLATE	(1)
47		K02-000047	SCREW M4 L=6	(2)
48		K02-000048	WASHER M4	(2)
49		K02-000029	RUBBER PLUG D=12.5 L=4	2
50		K02-000050	SPRING PIN 5.0X10	1

SIRUBA PARTS LIST	Series	Subject	Page
	PK511J	LOOPER SHAFT MECHANISM COMPONENTS 軸套及勾線結構	1 / 2
			Date
			2014/06/17

The diagram illustrates the exploded view of the Looper Shaft Mechanism Components. Key parts include:

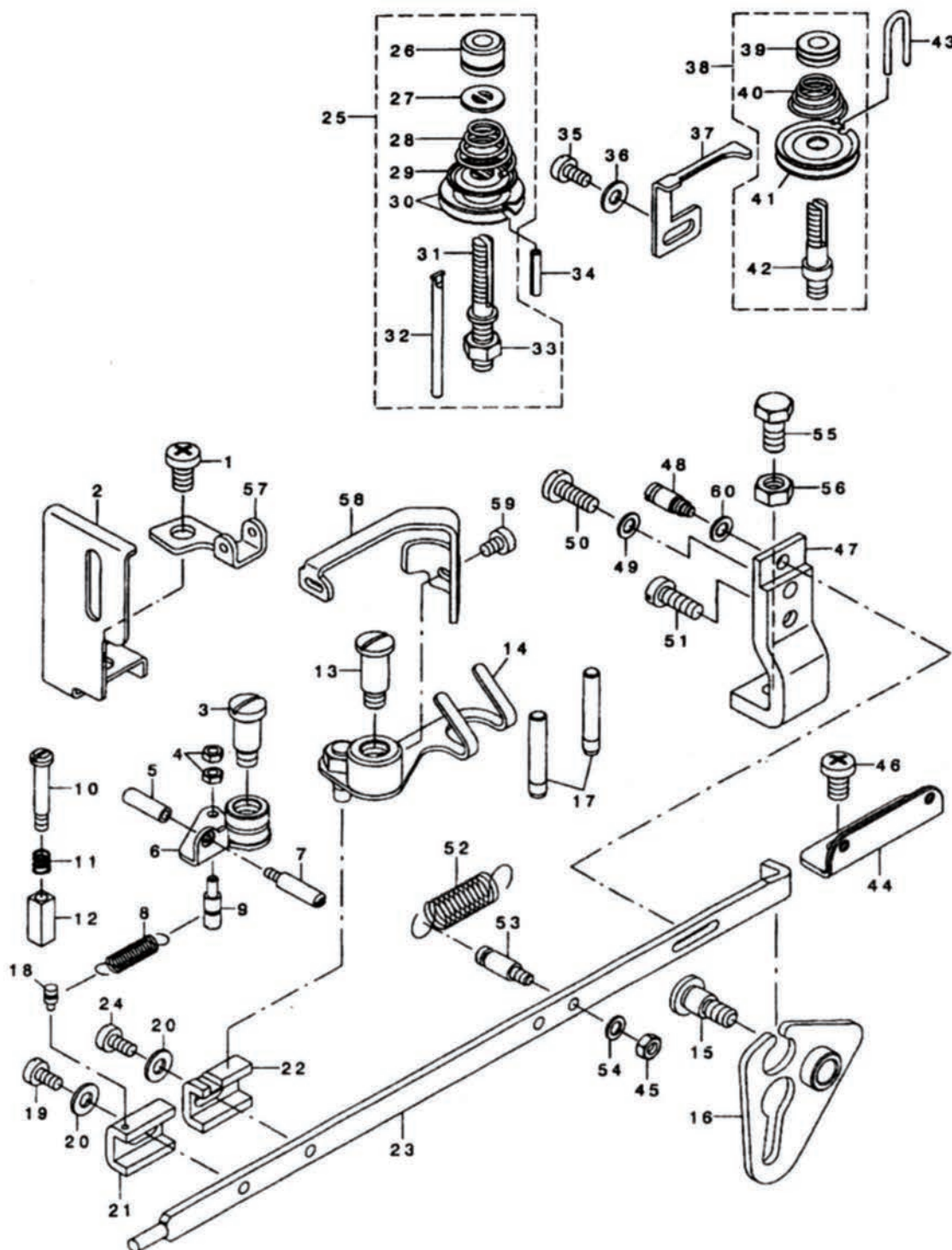
- Shaft (32):** The central horizontal shaft.
- Gears (37, 44):** Two gears, one at the top right and one at the bottom right.
- Bearings (28, 30):** Two bearings supporting the shaft.
- Brackets and Fasteners:** Various components like 1, 2, 3, 4, 5, 6, 7, 8, 9, 10, 11, 12, 13, 14, 15, 16, 17, 18, 19, 20, 21, 22, 23, 24, 25, 26, 27, 28, 29, 30, 31, 33, 34, 35, 36, 38, 39, 40, 41, 42, 43, 44, 45, 46, and 47.

SIRUBA PARTS LIST	Series	Subject	Page
	PK511J	LOOPER SHAFT MECHANISM COMPONENTS 軸套及勾線結構	2 / 2
			Date
			2014/06/17

No	note	Parts No.	DESCRIPTION	Qty
1		K03-000001	THRUST COLLAR ASM.	止推圈組
2		K03-000002	THRUST COLLAR D=7.94 W=7	止推圈
3		K03-000003	SCREW 9/64-40 L=6.1	螺釘
4		K03-000004	SCREW	導針器螺釘
5		K03-000005	NEEDLE GUARD	導針器
6		K03-000006	POSITIONING FINGER YOKE SLIDE	撥線滑動裝置
7		K03-000007	SCREW M4 L=9	插入件螺釘
8		K03-000008	YOKE SLIDE INSERT	撥線滑動基座
9		K03-000009	YOKE SLIDE	撥線柄
10		K03-000010	ASSY_LOOP_POSITIONING_FINGER_LEVER	指針桿組件
11		K03-000011	LOOP_POSITIONING_FINGER_CAM_ROLL	定位滾軸
12		K03-000012	HINGE SCREW D=6.35 H=2.4	指針桿螺釘
13		K03-000013	SCREW	固定螺釘
14		K03-000014	THROAT PLATE SET	針板組
15		K03-000015	THROAT PLATE	針板
16		K03-000016	THREAD BIND PLATE ASM.	刀組架上
17		K03-000017	THREAD BIND SUPPORT PLATE	刀組架下
18		K03-000018	COUNTER KNIFE	固定刀
19		K03-000019	SCREW 1/8-44 L=3.0	螺釘
20		K03-000020	MOVING KNIFE ASM.	活動刀
21		K03-000021	HINGE SCREW D= 6H= 0.85	合頁螺釘
22		K03-000022	ASSY_LOOP_POSITIONING_FINGER_CAM	定位針凸軸
23		K03-000023	LOOP_POSITIONING_FINGER_CAM	定位針凸軸
24		K03-000024	SCREW 11/64-40 L= 3.5	螺釘
25		K03-000025	ASSY_CAM_AND_LOOPER_SLEEVE	凸軸套管組
26		K03-000026	CAM AND LOOPER SLEEVE	凸軸套管
27		K03-000027	SCREW 15/64-28 L= 4.0	固定螺釘
28		K03-000028	LOOP_POSITIONING_FINGER_CAM REAY	指針凸軸 後
29		K03-000029	SCREW 11/64-40 L= 2.8	固定螺釘
30		K03-000030	LOOPER SHAFT BUSHING FRONT	前套管
31		K03-000031	SCREW	固定螺釘
32		K03-000032	LOOPER_SHAFT	主軸
33		K03-000033	COLLER_ASSY	軸圈組
34		K03-000034	COLLER	軸圈
35		K03-000035	SCREW 11/64-40 L=4	固定螺釘
36		K03-000036	SCREW	固定螺釘
37		K03-000037	LOOPER SHAFT DRIVEN GEAR ASM.	齒輪
38		K03-000038	SCREW 1/4-40 L=6	固定螺釘
39		K03-000039	THRUST BALL BEARING	軸承與墊圈
40		K03-000040	LOOPER SHAFT BUSHING REAR	後套管
41		K03-000041	WORM WHEEL ASM.	蝸輪與齒輪
42		K03-000042	WORM	蝸輪
43		K03-000043	SCREW 1/4-40 L= 7.0	螺釘
44		K03-000044	CAM SHAFT DRIVEN GEAR	齒輪
45		K03-000045	SCREW 1/4-40 L=6	固定螺釘
46		K03-000046	LOOPER	勾線梭
47		K03-000047		針板螺釘

1. /

SIRUBA PARTS LIST	Series	Subject	Page
	PK511J	NIPPER&THREAD TENSTON PARTS COMPONENTS 線夾及過傳動結構	1 / 2
			Date
			2014/06/17

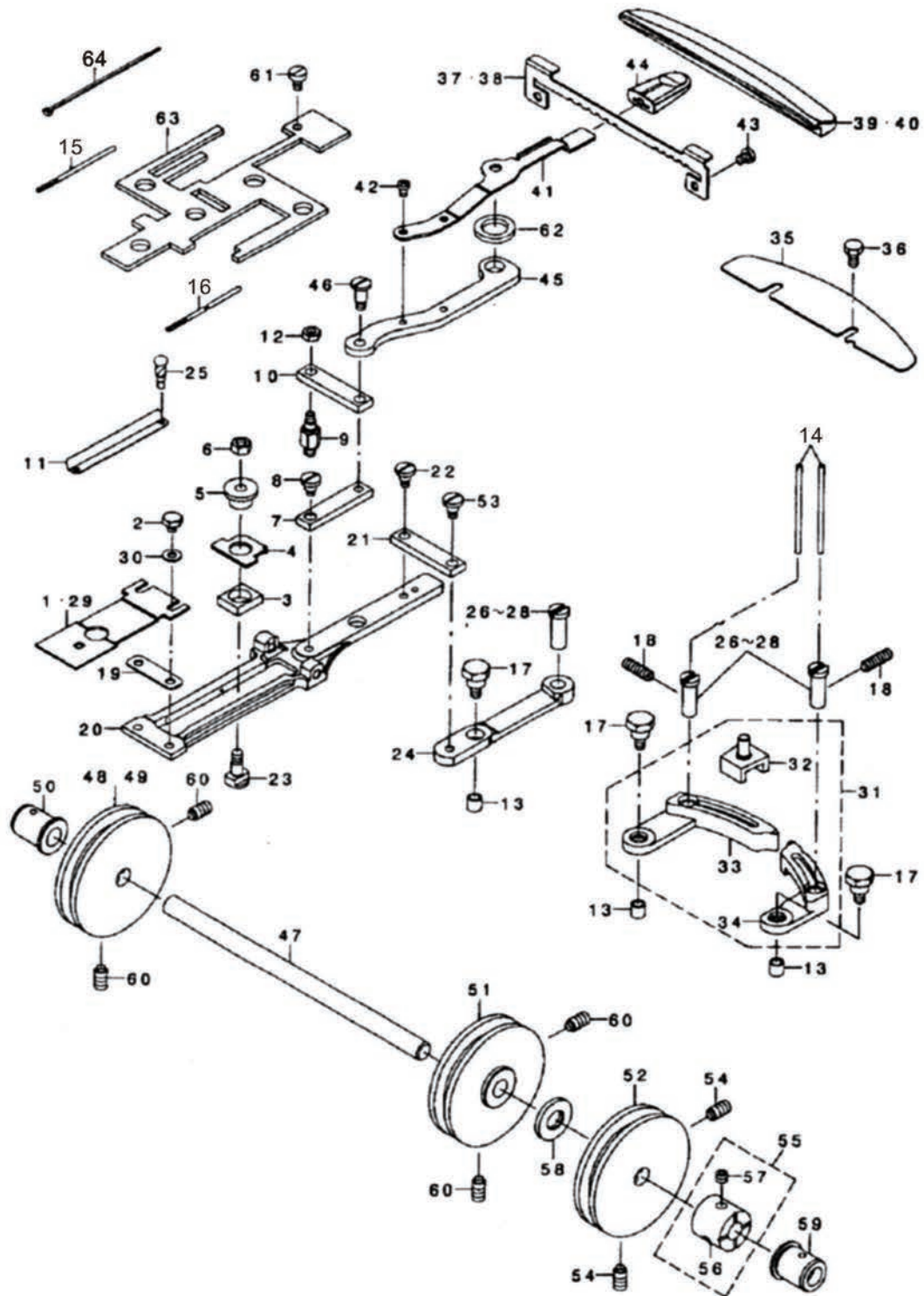


SIRUBA PARTS LIST	Series	Subject	Page
	PK511J	NIPPER&THREAD TENSTON PARTS COMPONENTS 線夾及過傳動結構	2 / 2
			Date
			2014/06/17

No	note	Parts No.	DESCRIPTION	Qty
1		K04-000001	SCREW M6 L=12	1
2		K04-000002	NEEDLE BAR GUARD	1
3		K04-000003	SHOULDER SCREW	1
4		K04-000004	NUT	2
5		K04-000005	NUT	1
6		K04-000006	NIPPER COMPL	1
7		K04-000007	LOOPER SHAFT BUSHING SCREWSTUD	1
8		K04-000008	NIPPER BAR BLOCK SPRING	1
9		K04-000009	NIPPER BAR BLOCK SPRING SCREW	1
10		K04-000010	HINGE SCREW D=4 H=20	1
11		K04-000011	NIPPER SLIDE BLOCK SPRING	1
12		K04-000012	NIPPER BLOCK	1
13		K04-000013	SHOULDER SCREW D=7.94 H=15	1
14		K04-000014	THREAD PULL OFF LEVER ASM	1
15		K04-000015	SHOULDER SCREW D=7.94 H=8	1
16		K04-000016	NIPPER BAR ACTUATING LEVER ASM	1
17		K04-000017	THREAD GUIDE PIN	2
18		K04-000018	NIPPER BAR BLOCK SPRING PIN	1
19		K04-000019	SCREW	1
20		K04-000020	WASHER	2
21		K04-000021	NIPPER BAR BLOCK	1
22		K04-000022	TENSION LEVER ROCKING PIECE	1
23		K04-000023	NIPPER BAR	1
24		K04-000024	SCREW	1
25		K04-000025	TENSION POST ASM NO.2	1
26		K04-000026	TENSION NUT	(1)
27		K04-000027	ROTATION STOPPER	(1)
28		K04-000028	THREAD TENSION SPRING	(1)
29		K04-000029	THREAD TENSION DISK PRESSER	(1)
30		K04-000030	THREAD TENSION DISK NO.1	(2)
31		K04-000031	TENSION POST NO.2	(1)
32		K04-000032	TENSION RELEASE PIN	(1)
33		K04-000033	NUT M6	(1)
34		K04-000034	SPRING PIN 3X16	1
35		K04-000035	SCREW	1
36		K04-000036	WASHER	1
37		K04-000037	THREAD TENSION RELEASING LEVER	1
38		K04-000038	ASSY_THREAD_TENSION_NO.1	1
39		K04-000039	THREAD_TENSION_NUT	(1)
40		K04-000040	FIRST THREAD TENSION SPRING	(1)
41		K04-000041	THREAD TENSION DISK NO.1	(2)
42		K04-000042	THREAD_TENSION_POST_NO.1	(1)
43		K04-000043	THREAD GUIDE	1
44		K04-000044	THREAD GUIDE NO.1	1
45		K04-000045	NUT M4	1
46		K04-000046	SCREW M6 L=12	1
47		K04-000047	NIPPER BAR BEARING BLOCK	1
48		K04-000048	ADJUSTING SCREW	1
49		K04-000049	WASHER 5.5X10X0.8	1
50		K04-000050	SCREW M5 L=14	1
51		K04-000051	SCREW	1
52		K04-000052	THREAD TENSION SPRING	1
53		K04-000053	NIPPER BAR SPRING SCREW	1
54		K04-000054	WASHER	1
55		K04-000055	SCREW M6 L=14	1
56		K04-000056	NUT M6	1
57		K04-000057	THREAD GUIDE	1
58		K04-000058	LEVER	1
59		K04-000059	SCREW M4 L=6	1
60		K04-000060	WASHER 5X10.5X1	1

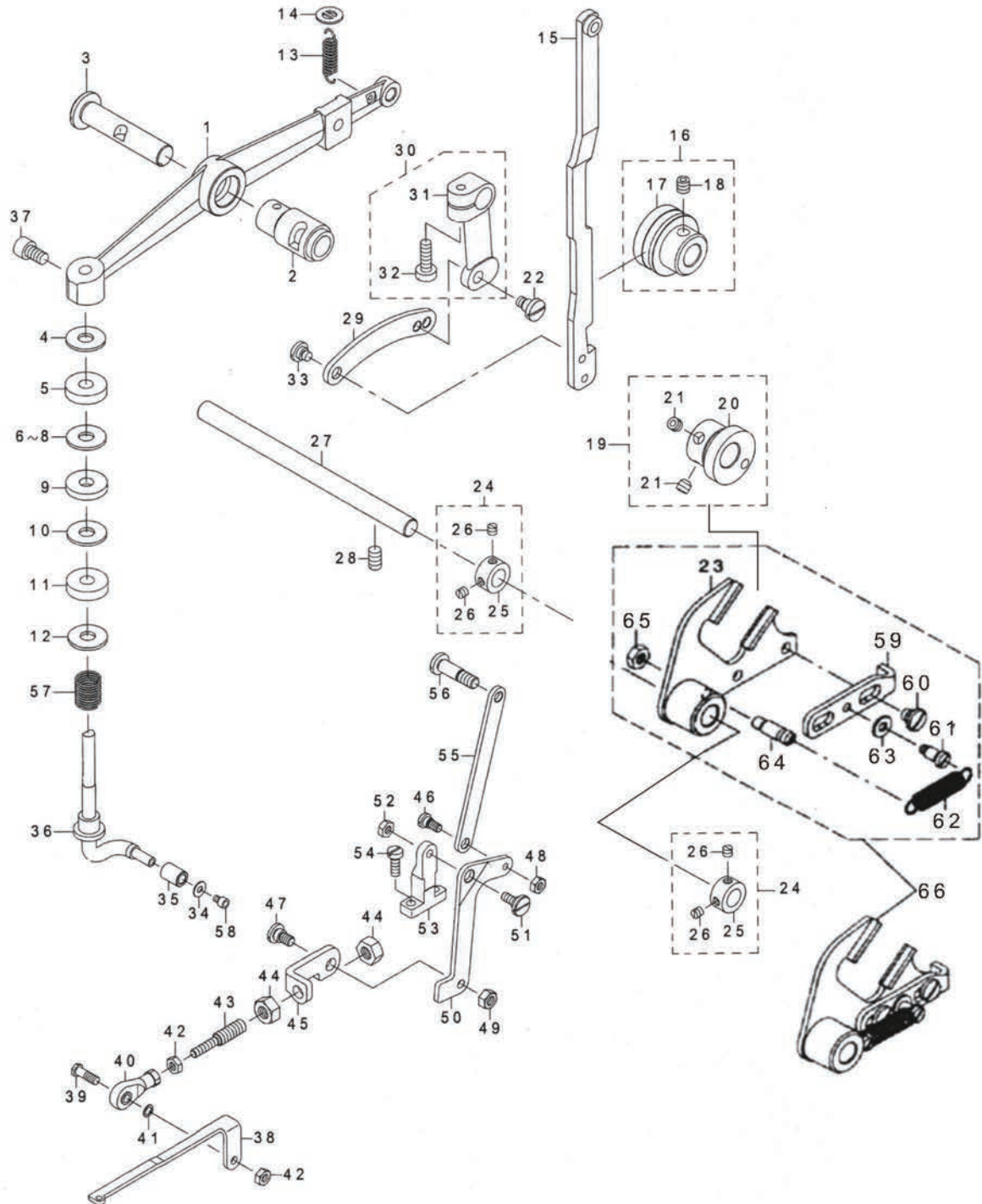
1. /

SIRUBA PARTS LIST	Series	Subject	Page
	PK511J	FEED PLATE COMPONENTS 位移板. 定位移位部分結構	1 / 2
			Date
			2014/06/17



SIRUBA PARTS LIST	Series	Subject	Page
	PK511J	FEED PLATE COMPONENTS 位移板. 定位移位部分結構	2 / 2
			Date
			2014/06/17

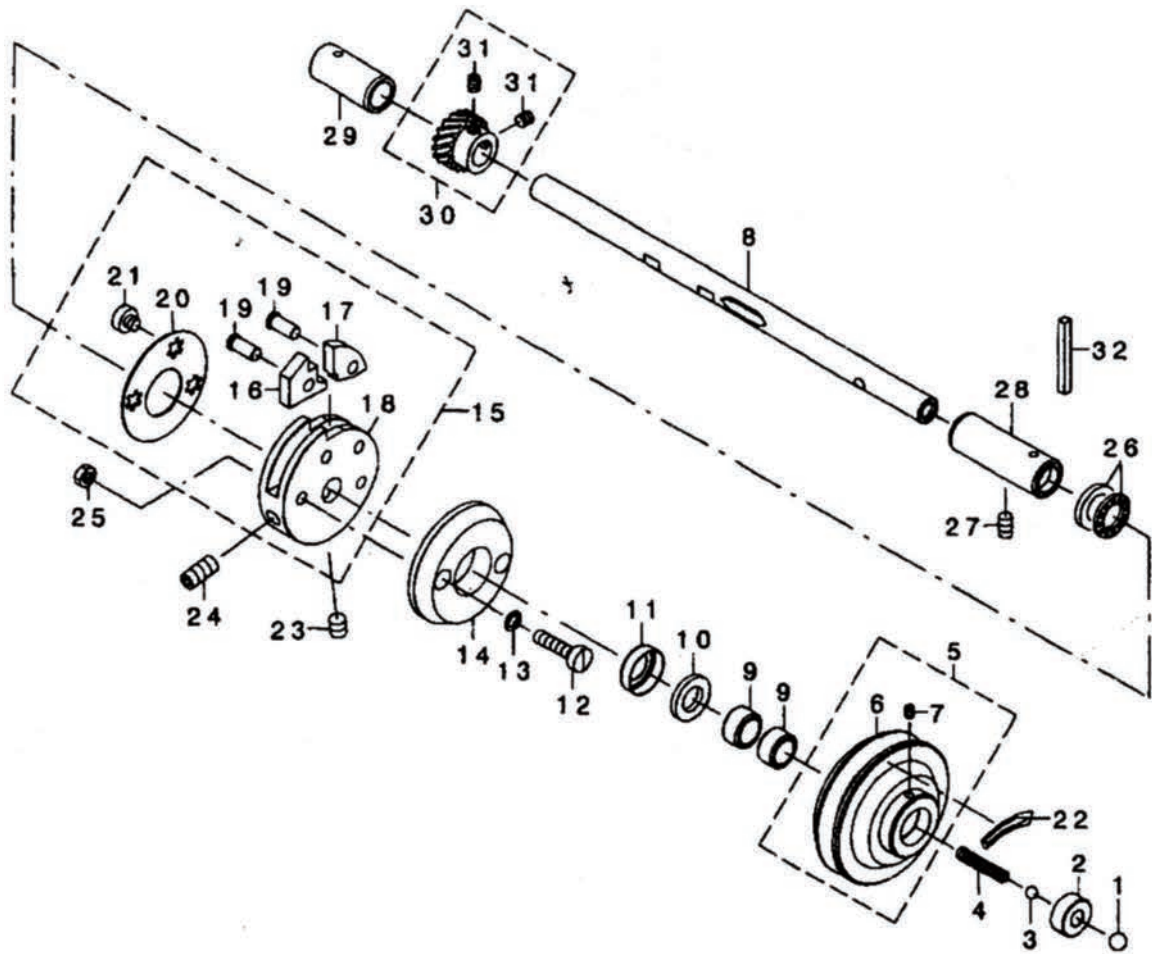
No	note	Parts No.	DESCRIPTION	Qty
1		K05-000001	FEED PLATE SMALL BUTTON	1
2		K05-000002	SCREW 3/16-28 L=6	2
3		K05-000003	INDICATOR PIN BEARING BLOCK	1
4		K05-000004	CROSSWISE FEED INDICATOR	1
5		K05-000005	CROSSWISE FEED INDICATOR PIN	1
6		K05-000006	NUT M6	1
7		K05-000007	SLIDE PLATE CONNECTING LINK	1
8		K05-000008	HINGE SCREW D= 6.35 H= 4.8	1
9		K05-000009	STUD	1
10		K05-000010	INTERMEDI CONNECTING LINK	1
11		K05-000011	CROSSWISE FEED GRADUATED PLATE	1
12		K05-000012	NUT M5	1
13		K05-000013	CAM ROLL	2
14		K05-000014	OIL FELT	1
15		K05-000015	OIL WICK	(1)
16		K05-000016	OIL WICK	(1)
17		K05-000017	CAM ROLL SCREW STUD	2
18		K05-000018	SCREW M6X12	1
19		K05-000019	SPACER PLATE	1
20		K05-000020	FEED PLATE	1
21		K05-000021	INTERMEDI CONNECTING LINK	1
22		K05-000022	HINGE SCREW D= 6.35 H= 4.8	1
23		K05-000023	HINGE SCREW FOW CROSSWISE FEED	1
24		K05-000024	CROSSWISE FEED LEVER	1
25		K05-000025	RIVET	2
26	#03	K05-000026	FEED STUD A	1
27	#03	K05-000027	FEED STUD B	1
28	#03	K05-000028	FEED STUD C	1
29		K05-000029	FEED PLATE SMALL BUTTON	1
30		K05-000030	WASHER 5X10.5X1	2
31	#01	K05-000031	LENGTHWISE FEED LEVER ARM	1
32		K05-000032	LENGTHWISE FEED LEVER SLIDE	(1)
33		K05-000033	FEED LEVER L	(1)
34		K05-000034	FEED LEVER R	(1)
35		K05-000035	FEED KNOB GUIDE PLATE	2
36		K05-000036	SCREW M5X0.8 L=8	1
37	#02	K05-000037	PLATE BASE (MB-1373)	1
38	#01	K05-000038	PLATE BASE (MB-1377)	1
39	#02	K05-000039	GRADUATE PLATE (MB-1373)	1
40	#01	K05-000040	GRADUATE PLATE (MB-1377)	1
41		K05-000041	HANDLE AND INDICATOR SPRING	1
42		K05-000042	SCREW M4 L=6	2
43		K05-000043	SCREW	2
44		K05-000044	KNOB	1
45		K05-000045	INDICATOR SPRING CONNECTING LINK	1
46		K05-000046	SHOULDER SCREW D=6.35 H=9.7	2
47		K05-000047	CAM SHAFT	1
48		K05-000048	LENGTHWISE FEED CAM(X)	1
49	#02	K05-000049	LONGITUDINAL FEED CAM	1
50		K05-000050	CAM SHAFT BUSHING LEFT	1
51		K05-000051	LATERAL FEED CAM	1
52	#01	K05-000052	LONGITUDINAL FEED CAM A	1
53		K05-000053	SHOULDER SCREW D=6.35 H=4.8	1
54	#01	K05-000054	SCREW 9/32-28 L=13.5	2
55	#02	K05-000055	THRUST COLLAR ASSY	1
56		K05-000056	THRUST COLLAR	(1)
57		K05-000057	SCREW M6 L=5	(2)
58	#01	K05-000058	SPACER	1
59		K05-000059	CAM SHAFT BUSHING RIGHT	1
60		K05-000060	SCREW 9/32-28 L=13.5	4
61		K05-000061	SCREW M5 L=8	1
62		K05-000062	OIL RETAINING FELT	1
63		K05-000063	FEED SHOULDER SCREW FELT	1
64		K05-000064	CABLE BAND	0.06



SIRUBA PARTS LIST	Series	Subject	Page
	PK511J	BUTTCN CLAMP LIFIER COMPONENTS 鈕扣夾提放結構	2 / 2
			Date
			2014/06/17

No	note	Parts No.	DESCRIPTION	Qty
1		K06-000001	LIFTING LEVER	針柱提升桿
2		K06-000002	BUSHING	提升桿軸套
3		K06-000003	NEEDLE BAR LEVER	提升桿軸
4		K06-000004	WASHER 8.5X18.0X1.2	墊圈
5		K06-000005	CUSHION	緩沖墊
6	#01	K06-000006	WASHER 8.5X18.0X1.2	墊圈
7	#01	K06-000007	WASHER 7.5X19X1.5	墊圈
8	#01	K06-000008	WASHER	墊圈
9		K06-000009	WASHER 7.5X19X1.5	墊圈
10		K06-000010	WASHER 7.5X19X1.5	墊圈
11		K06-000011	CUSHION	緩沖墊
12		K06-000012	WASHER 7X20X3.5	墊圈
13		K06-000013	SPRING	啟動桿彈簧
14		K06-000014	WASHER	墊圈
15		K06-000015	BUTTON CLAMP LIFTING LINK	提升聯動柄
16		K06-000016	ASSY_SLIDING_ROLLER	滑輪(組)
17		K06-000017	SLIDING_ROLLER	滑輪
18		K06-000018	SCREW M6 L=6	螺釘
19		K06-000019	ECCENTRIC_CAM	傳動偏心(組)
20		K06-000020	ECCENTRIC_CAM	傳動偏心套
21		K06-000021	SCREW M6 L=6	螺釘
22		K06-000022	HINGE SCREW D= 6.35 H= 4.8	合頁螺釘
23		K06-000023	BUTTON_CLAMP_LIFTING_LINK	止放曲柄
24		K06-000024	THRUST COLLAR ASM. D=9.5 W=8	止推環(組)
25		K06-000025	THRUST COLLAR D=9.5 W=8	止推環
26		K06-000026	SCREW 11/64-40 L= 3.5	螺釘
27		K06-000027	LEVER_SHAFT	杆組
28		K06-000028	SCREW	螺釘
29		K06-000029	LIFTING_LINK	連動柄
30		K06-000030	LIFTING_PLATE_GUIDE_ROD_ASM	提升连杆(組)
31		K06-000031	LIFTING_PLATE_GUIDE_ROD	提升连杆
32		K06-000032	SCREW M5 L=16	螺釘
33		K06-000033	HINGE SCREW D= 6.35 H= 2.1	合頁螺釘
34		K06-000034	WASHER M3	墊圈
35		K06-000035	L_TYPE_LIFTING_BAR_ROLLER	滾珠
36		K06-000036	BUTTON_CLAMP_LIFTING_ROD_A	提升桿
37		K06-000037	SCREW M6 L=10	螺釘
38		K06-000038	CONNECTING_LINK_FRONT	剪線連接組(前)
39		K06-000039	JOINT STUD	連接柱
40		K06-000040	FEED ADJUSTING JOINT	橫向接头
41		K06-000041	WASHER 5.1X7.5X0.5	墊圈
42		K06-000042	NUT M5	螺帽
43		K06-000043	CONNECTING_SCREW	螺釘
44		K06-000044	NUT M8 TYPE1	螺帽
45		K06-000045	CONNECTING_LINK_REAR	剪線連接組(後)
46		K06-000046	HINGE SCREW D= 6.35 H= 3.2	合葉螺釘
47		K06-000047	HINGE SCREW D= 7.94 H= 4	合葉螺釘
48		K06-000048	NUT 3/16-32	螺帽
49		K06-000049	NUT 15/64-28	螺帽
50		K06-000050	THREAD_TRIMMING_LEVER	剪線桿
51		K06-000051	SHOULDER SCREW D=7.94 H=3.1	合葉螺釘
52		K06-000052	NUT M5	螺帽
53		K06-000053	THREAD_TRIM_LEVER_BASE	剪線桿底座
54		K06-000054	SCREW M5 L=14	螺釘
55		K06-000055	THREAD TRIMMING LINK	剪線連接裝置
56		K06-000056	HINGE SCREW D=6.35 H=13.2	合葉螺釘
57		K06-000057	SPRING	彈簧
58		K06-000058	SCREW M3X0.5 L=4	螺釘
59		K06-000059	LIFTING HOOK	吊鉤
60		K06-000060	SHOULDER SCREW D=6.35 H=2.7	合頁螺釘
61		K06-000061	SHOULDER SCREW D=5 H=7.2	合頁螺釘
62		K06-000062	SPRING	彈簧
63		K06-000063	WASHER	墊圈
64		K06-000064	SCREW STUD	螺柱
65		K06-000065	NUT	螺母
66		K06-000066	BUTTON CLAMP LIFTING LINK SET	止放曲柄(組)

SIRUBA PARTS LIST	Series	Subject	Page
	PK511J	NEEDLE DRIVING PULLEY SHAFT COMPONENTS 皮帶輪.軸結構	1 / 2
			Date
			2014/06/17



SIRUBA PARTS LIST	Series	Subject	Page
	PK511J	NEEDLE DRIVING PULLEY SHAFT COMPONENTS 皮帶輪.軸結構	2 / 2
			Date
			2014/06/17

No	note	Parts No.	DESCRIPTION	Qty
1		K07-000001	BALL LARGE (大)滾珠	1
2		K07-000002	PULLEY INSERT 皮帶輪插入件	1
3		K07-000003	BALL_SMALL (小)滾珠	1
4		K07-000004	SPRING 彈簧	1
5		K07-000005	DRIVING PULLEY_ASM 傳動皮帶輪(組)	1
6		K07-000006	DRIVING PULLEY 傳動皮帶輪	(1)
7		K07-000007	SCREW M4 L=6 螺釘	(1)
8		K07-000008	NEEDLE_DRIVING_PULLEY_SHAFT 皮帶輪軸	1
9		K07-000009	NEEDLE BEARING 軸承	2
10		K07-000010	GREASE_RETAINING_WICK 浸油油芯	1
11		K07-000011	RETAINING WASHER 保護墊圈	1
12		K07-000012	SCREW M6 L=23.5 皮帶輪離合器螺釘	2
13		K07-000013	WASHER 6.2X9.5X1 墊圈	2
14		K07-000014	NEEDLE_DRIVING_PULLEY_CLUTCH_D 傳動皮帶輪離合片	1
15		K07-000015	STOP_MOTION_DISC_ASM 止動片(組)	1
16		K07-000016	STOP_MOTION_DISC_LATCH_A 止動板掣子(A)	(1)
17		K07-000017	STOP_MOTION_DISC_LATCH_B 止動板門(B)	(1)
18		K07-000018	STOP_MOTION_DISC 止動裝置	(1)
19		K07-000019	STOP_MOTION_PAWL_SHAFT 止動軸	(2)
20		K07-000020	STOP_MOTION_DISC_WASHER 偏心墊圈	(1)
21		K07-000021	SCREW M6 L=4.5 螺帽	(1)
22		K07-000022	DIRECTION LABEL 標示方向	1
23		K07-000023	SCREW M8X8 固定螺釘	1
24		K07-000024	SCREW M8 L=17 固定螺釘	1
25		K07-000025	NUT M6 TYPE3 螺帽	2
26		K07-000026	THRUST BALL BEARING 滾珠軸承與墊圈	1
27		K07-000027	SCREW 螺釘	1
28		K07-000028	PULLEY_SHAFT_BUSHING_RIGHT 皮帶輪軸套(右)	1
29		K07-000029	PULLEY_SHAFT_BUSHING_LEFT 皮帶輪軸套(左)	1
30		K07-000030	DRIVING GEAR (A) ASM 轉動齒輪組	1
31		K07-000031	OIL WICK 螺釘	1
32		K07-000032	油芯	

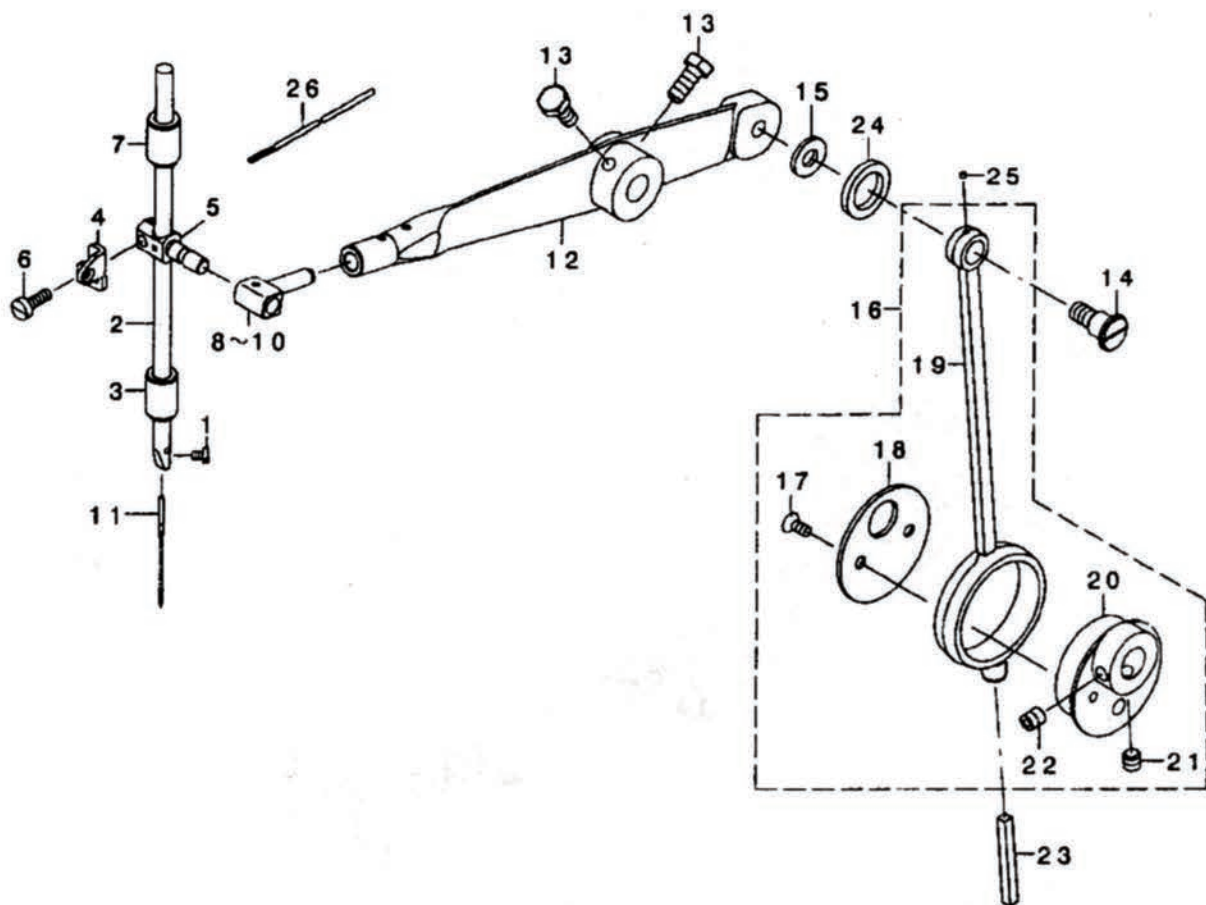
1... /

SIRUBA
PARTS LIST

Series
PK511J

Subject
NEEDLE BAR DRIVING MECHANISM COMPONENTS
針柱傳動結構

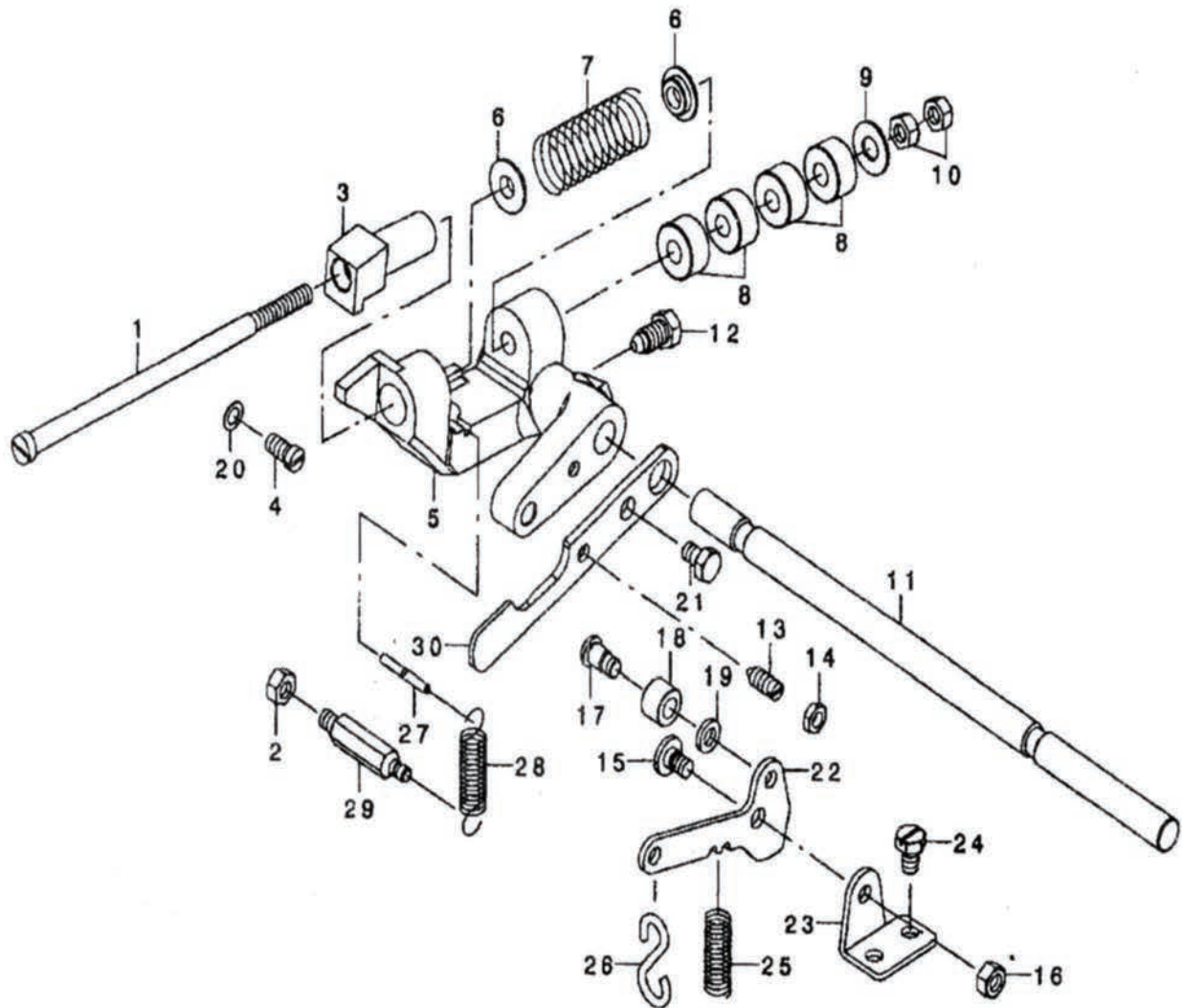
Page
1 / 2
Date
2014/06/17



SIRUBA PARTS LIST	Series	Subject	Page
	PK511J	NEEDLE BAR DRIVING MECHANISM COMPONENTS 針柱傳動結構	2 / 2
			Date
			2014/06/17

No	note	Parts No.	DESCRIPTION	Qty
1		K08-000001	SCREW 1/8-44 L=4.5	1
2		K08-000002	NEEDLE ROD	1
3		K08-000003	NEEDLE BAR BUSHING LOWER	1
4		K08-000004	NEEDLE_THREAD GUIDE	1
5		K08-000005	NEEDLE BAR CLAMP	1
6		K08-000006	SCREW M4 L=12	1
7		K08-000007	NEEDLE BAR BUSHING UPPER	1
8	#01	K08-000008	NEEDLE BAR SLIDE BLOCK A	1
9	#01	K08-000009	NEEDLE BAR SLIDE BLOCK B	1
10	#01	K08-000010	NEEDLE BAR SLIDE BLOCK C	1
11		K08-000011	NEEDLE TQX1 #16	1
12		K08-000012	NEEDLE BAR DRIVING LEVER	1
13		K08-000013	SCREW M6 L=14	2
14		K08-000014	SHOULDER SCREW D=9.53 H=8	1
15		K08-000015	WASHER	1
16		K08-000016	OIL WICK	0.1
17		K08-000017	SCREW 11/64-40 L=8.5	2
18		K08-000018	THRUST HOLDER	1
19		K08-000019	CRANK ROD	1
20		K08-000020	ECCENTRIC CAM	1
21		K08-000021	SCREW 1/4-40 L=6	1
22		K08-000022	SCREW 1/4-40 L= 8.5	1
23		K08-000023	OIL WICK	1
24		K08-000024	OIL_RETAINING FELT	1
25		K08-000025	OIL WICK	0.01
26		K08-000026	OIL WICK	

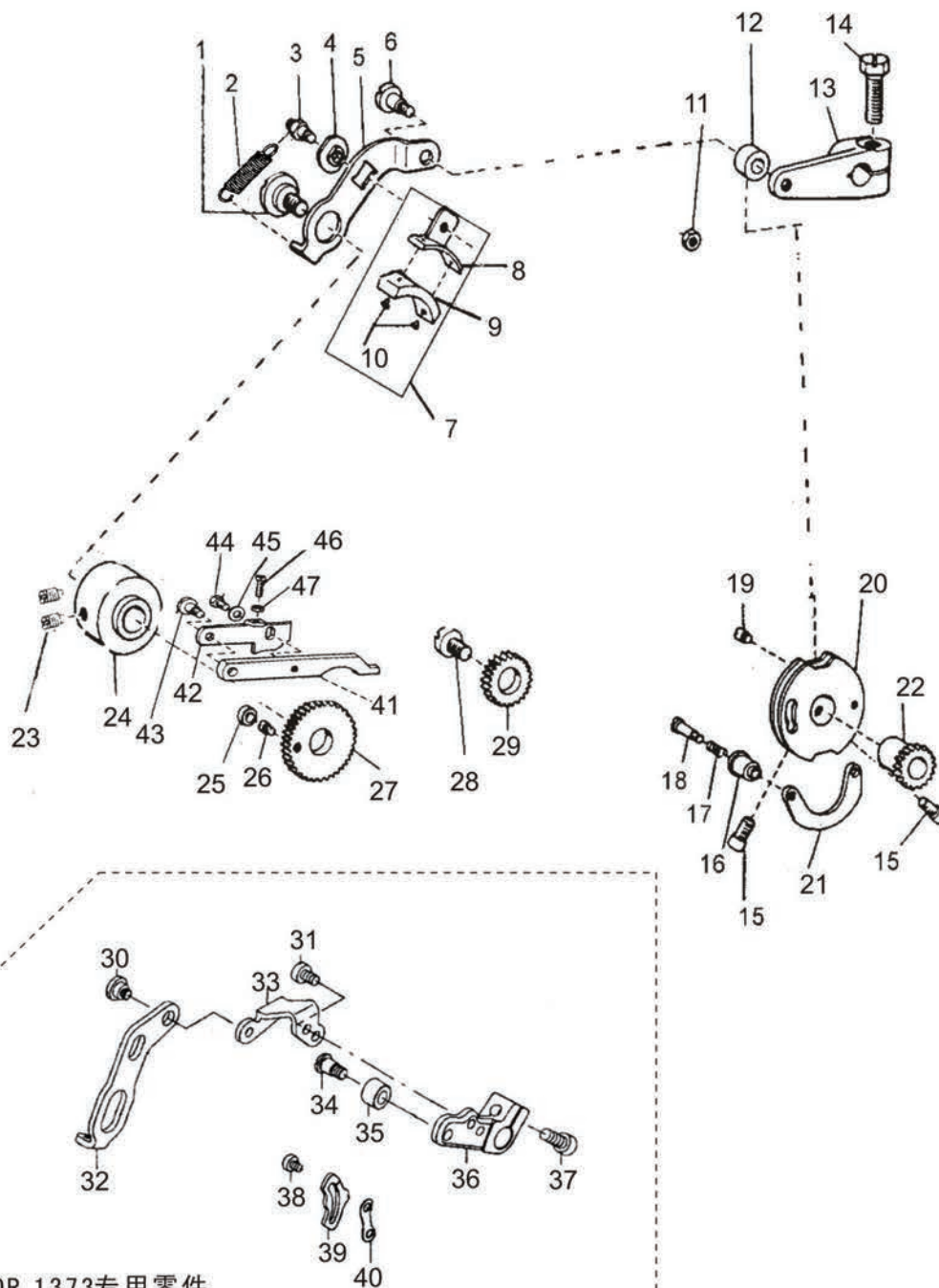
1. #01 SELECTIVE PARTS / 2. /



SIRUBA PARTS LIST	Series	Subject	Page
	PK511J	STOP MATION MECAHNISM COMPONENTS 停車止動結構	2 / 2
			Date
			2014/06/17

No	note	Parts No.	DESCRIPTION	Qty
1		K09-000001	STOP MOTION PLUNGER ROD 止動柱塞桿	1
2		K09-000002	NUT M6 TYPE3 螺帽	1
3		K09-000003	STOP MCTION PLUNGER 止動柱塞	1
4		K09-000004	SCREW M6 L=11 螺釘	1
5		K09-000005	STOP MOTION PLUNGER LEVER 止動柱塞桿基座	1
6		K09-000006	WASHER 墊圈	2
7		K09-000007	STOP MOTION SPRING 止動板彈簧	30
8		K09-000008	RUBBER CUSHION 橡膠墊圈	4
9		K09-000009	WASHER 墊圈	1
10		K09-000010	NUT 9/32-28 螺帽	2
11		K09-000011	STOP MOTION SHAFT 止動桿主軸	1
12		K09-000012	SCREW 螺釘	1
13		K09-000013	SCREW 15/64-28 L=15.0 螺釘	1
14		K09-000014	NUT 15/64-28 螺帽	1
15		K09-000015	SHOULDER SCREW D=6.8 H=2.7 螺釘	1
16		K09-000016	NUT M6 螺帽	1
17		K09-000017	SHOULDER SCREW D=8 H=7 合葉螺釘	1
18		K09-000018	STITCH ADJUSTING ROLLER 滾球	1
19		K09-000019	WASHER 6.1X11X2 墊圈	1
20		K09-000020	WASHER 墊圈	1
21		K09-000021	SCREW M6 L=10 螺釘	1
22		K09-000022	STOP MOTION TRIP LEVER 止動撞擊桿	1
23		K09-000023	STOP MOTION TRIP LEVER BRACKET 止動撞擊支架	1
24		K09-000024	SCREW M6 L=12 螺釘	2
25		K09-000025	OIL REGULATOR SCREW SPRING 彈簧	1
26		K09-000026	S SHAPED HOOK S型鉤	1
27		K09-000027	STOP MOTION LEVER SPRING PIN 彈簧銷	1
28		K09-000028	STOP MOTION LEVER SPRING 彈簧	1
29		K09-000029	SCREW STUD 螺柱	1
30		K09-000030	PRESSURE APPLYING LEVER 止動板壓力桿	1

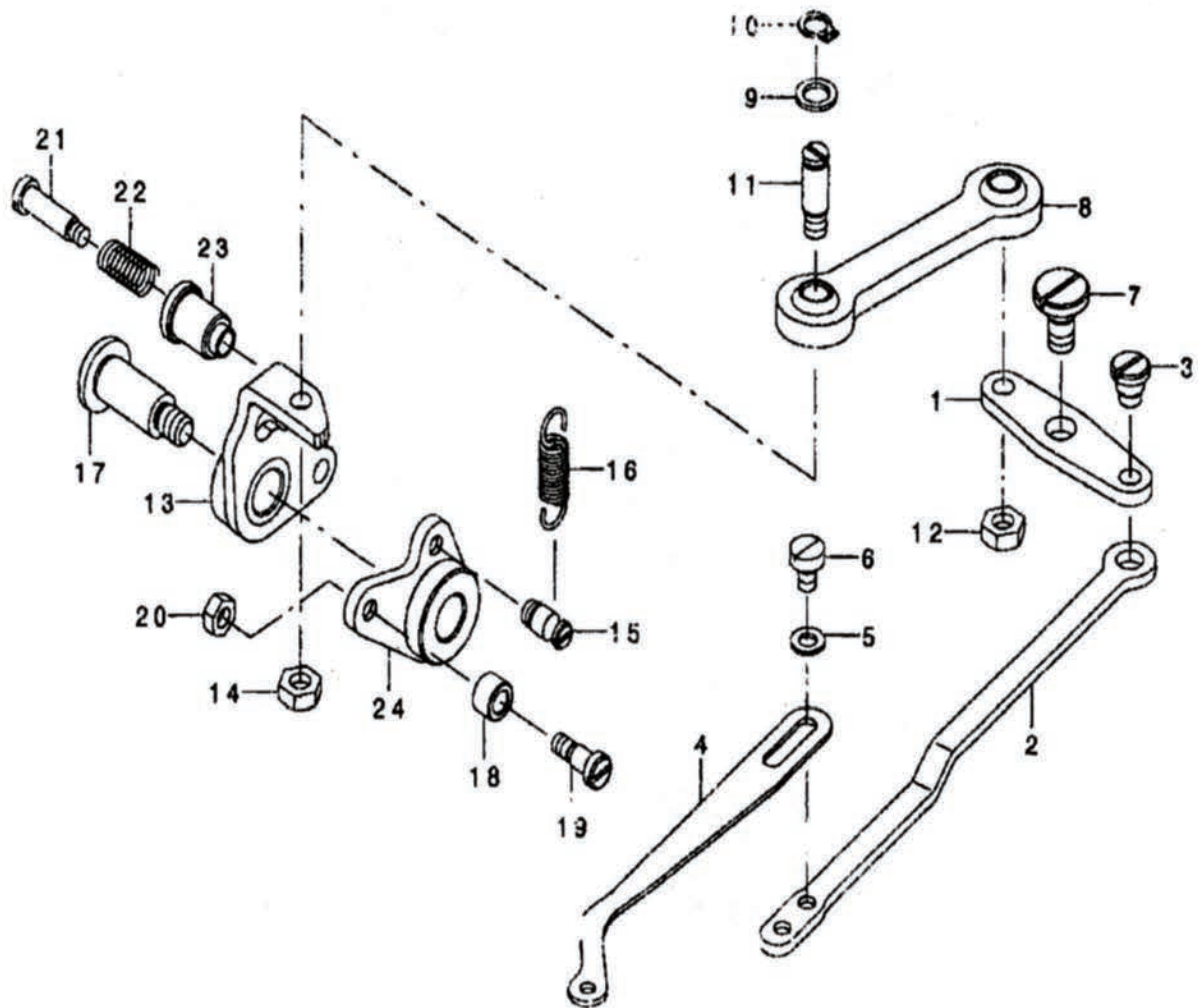
1. /



* FOR 1373 专用零件

SIRUBA PARTS LIST	Series	Subject	Page
	PK511J	STITCH SELECTING PARTS COMPONENT 摩擦板.止動凸輪結構	2 / 2
			Date
			2014/06/17

No	note	Parts No.	DESCRIPTION	Qty
	K10-000001	SHOULDER SCREW D=12.7 H=3.4	合頁螺釘	1
	K10-000002	SPRING FOR FRICTION PLATE	彈簧	1
	K10-000003	FRICTION PLATE ROTATING SHAFT	摩擦板旋轉柱	1
	K10-000004	WASHER 8.5*18*1.6	摩擦輪滑輪塊	1
	K10-000005	SPEDE SLOWING LEVER	減速杆	1
	K10-000006	HINGE SCREW D=8 H=3.4	合頁螺釘	1
	K10-000007	FRICTION PLATE HOLDER ASM	摩擦板組	1
	K10-000008	FRICTION PLATE HOLDER	摩擦板底座	1
	K10-000009	SPEED SLOWING FRICTION PLATE	減速摩擦板	1
	K10-000010	SET PIN	固定銷	2
	K10-000011	NUT	螺帽	1
	K10-000012	STOP MOTION RTIPPING LEVER CAM ROLL	止動分離杆凸緣滾柱	1
	K10-000013	STOP MOTION TRIPPING LEVER	止動連杆	1
	K10-000014	CLAMP SCREW	夾緊螺釘	1
	K10-000015	SET SCREW FOR CAM	凸輪用固定螺釘	2
	K10-000016	STOP MOTION CAM KNOB	止動凸輪旋鈕	1
	K10-000017	SPRING	彈簧	1
	K10-000018	SCREW STUD	螺柱	1
	K10-000019	SCREW FOR STOP MOTION CAM SHOE	止動凸輪用螺釘	1
	K10-000020	STOP MOTION CAM	止動凸輪	1
	K10-000021	STOP MOTION CAM SHOE	止動凸輪路蹄	1
	K10-000022	STOP MOTION GEAR	止動凸齒輪	1
	K10-000023	SET SCREW	固定螺釘	2
	K10-000024	SPEED SLOWING FRICTION WHEEL	減速摩擦輪	1
	K10-000025	ROLL	滾柱	1
	K10-000026	SCREW	螺絲	1
	K10-000027	STOP SCREW	針數選擇正齒輪	1
	K10-000028	SCREW STUD	螺柱	1
	K10-000029	STITCH SELECTING SPUR GEAR INTERMEDIATE	針數選擇正齒輪, 中間	1
	K10-000030	HINGE SCREW D=8 H=3.4	合頁螺釘	1
	K10-000031	SCREW M5 L=8	螺釘	1
	K10-000032	SPEDE SLOWING LEVER	減速杆	1
	K10-000033	FITING PLATE	連動板	1
	K10-000034	SHOULDER SCREW D=7.14 H=7	合頁螺釘	1
	K10-000035	STOP MOTION RTIPPING LEVER CAM ROLL	止動分離杆凸緣滾柱	1
	K10-000036	STOP MOTION TRIPPING LEVER	止動連杆	1
	K10-000037	CLAMP SCREW	夾緊螺釘	1
	K10-000038	SCREW M4*0.5 L=4.5	螺釘	1
	K10-000039	THREAD BIND NOTCH	定位調節片	1
	K10-000040	SPACER	襯墊	1
	K10-000041	STITCH SELECTING LEVER	針數選擇杆	1
	K10-000042	STITCH SELECTING LATCH	針數選擇門	1
	K10-000043	HINGE SCREW	合頁螺釘	1
	K10-000044	CONNECTING SCREW, FOR LATCH AND LEVER	連接螺釘	1
	K10-000045	WASHER	墊圈	1
	K10-000046	STOP SCREW FOR LATCH	止動螺絲	1
	K10-000047	NUT	螺帽	1

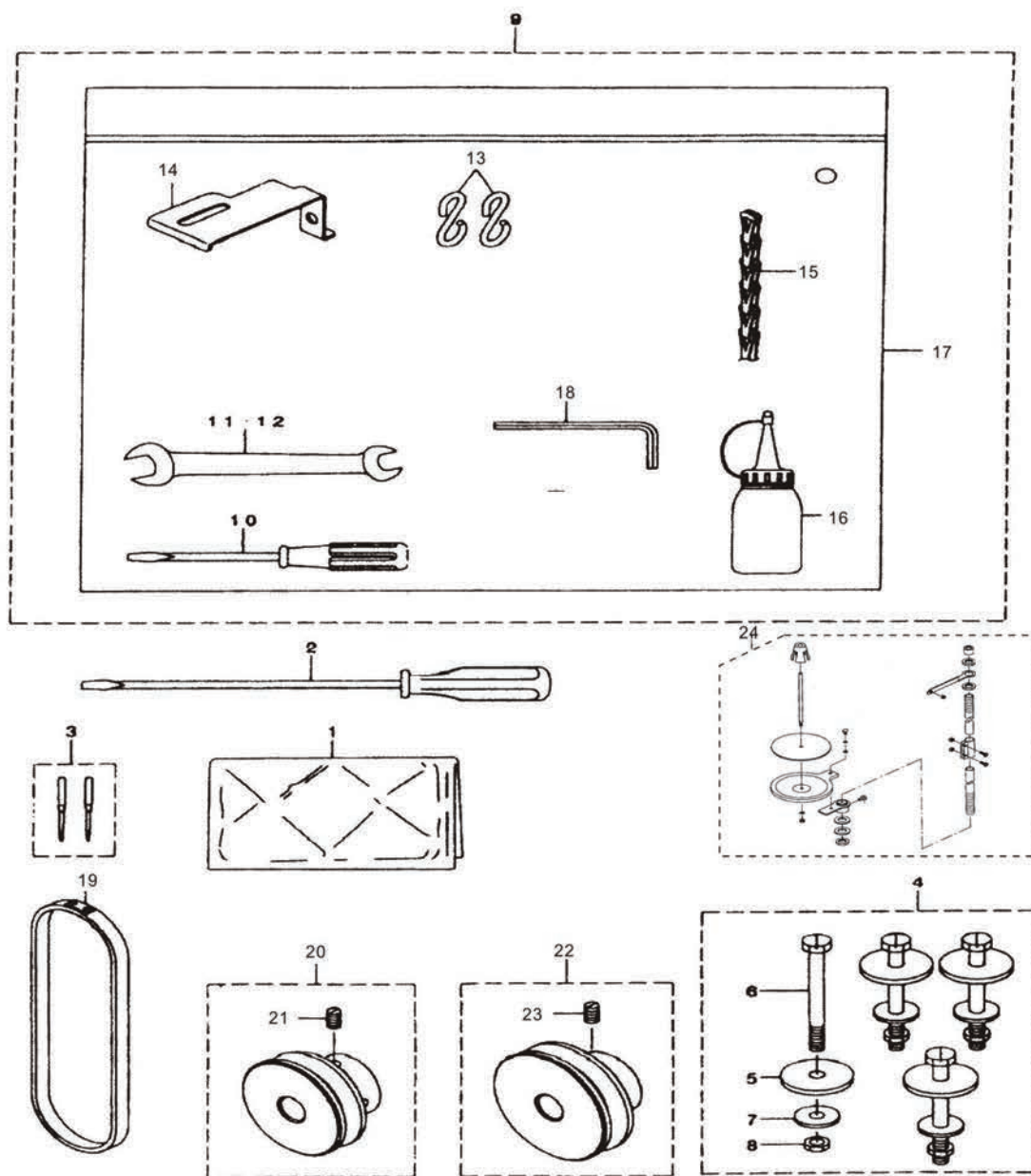


SIRUBA PARTS LIST	Series	Subject	Page
	PK511J	THREAD BIND NOTCH COMPONENTS (FOR 1377) FOR 1377専用零件	2 / 2
			Date 2014/06/17

No	note	Parts No.	DESCRIPTION	Qty
1		K11-000001	THREAD_BIND_LEVER 活动支架板	1
2		K11-000002	CONNECTING_PLATE_LARGE 连接杆	1
3		K11-000003	SHOULDER SCREW D=6.35 H=3.2 合页螺钉	1
4		K11-000004	CONNECTING_PLATE_SMALL 连动片杆	1
5		K11-000005	WASHER M4 垫圈	2
6		K11-000006	SCREW 螺钉	2
7		K11-000007	SHOULDER SCREW 合页螺钉	1
8		K11-000008	WORK_CAMP_FOOT_BALL_LINK 球头连杆	1
9		K11-000009	WASHER 垫圈	2
10		K11-000010	WASHER 6.2X9.5X1 止推环	2
11		K11-000011	RETAINING_RING 合页螺钉	2
12		K11-000012	NUT M5 螺帽	1
13		K11-000013	THREAD_BIND_ARM_B 连接固定座B	1
14		K11-000014	NUT M5 螺帽	1
15		K11-000015	THREAD_BIND_ARM_SPRING_RAC 合页螺钉	1
16		K11-000016	SPRING 弹簧	1
17		K11-000017	SHOULDER SCREW 合页螺钉	1
18		K11-000018	ROLLER 滚珠	1
19		K11-000019	SHOULDER SCREW D=4.6 H=5.7 合页螺钉	1
20		K11-000020	NUT M4X0.7 螺帽	1
21		K11-000021	SHOULDER SCREW D=4.8 H=14.5 合页螺钉	1
22		K11-000022	SPRING 弹簧	1
23		K11-000023	STITCH_ADJUSTING_CAM_KNOB 调节套杆	1
24		K11-000024	ASS_THREAD_BIND_ARM_A 连接固定座A	1

1. /

SIRUBA PARTS LIST	Series	Subject	Page
	PK511J	ACCESSORIZE PARTS COMPONENTS 附屬品關係	1 / 2
			Date
			2014/06/17



SIRUBA PARTS LIST	Series	Subject	Page
	PK511J	ACCESSORIZE PARTS COMPONENTS 附屬品關係	2 / 2
			Date 2014/06/17

No	note	Parts No.	DESCRIPTION	Qty
1	K12-000001	VINYL COVER	防尘罩	1
2	K12-000002	SCREW DRIVER, LARGE	螺丝刀	1
3	K12-000003	NEEDLE TQX1 #16-2	机针	1
4	K12-000004	BASE SCREW SET	螺钉组件	1
5	K12-000005	RUBBER CUSHION	垫圈	(4)
6	K12-000006	SCREW 15 / 64 - 28 L = 68	螺钉	(4)
7	K12-000007	WASHER 6.1X18.5X2	垫圈	(4)
8	K12-000008	NUT 15 / 64 - 28	螺帽	(4)
9	K12-000009	ACCESSORIE BAG ASM	配件组	1
10	K12-000010	SCREW DRIVER, MIDDLE	螺丝刀	(1)
11	K12-000011	WRENCH	开口扳手	(1)
12	K12-000012	WRENCH	开口扳手	(1)
13	K12-000013	S SHAPED HOOK	拉钩	(2)
14	K12-000014	NEEDLE BAR GUARD	针柱保护器	(1)
15	K12-000015	CHAIN	链条	(1)
16	K12-000016	OILER	油壶	(1)
17	K12-000017	ACCESSORIE BAG	配件组	(1)
18	K12-000018	HEXAGONAL WRENCH KYE	六角扳手	(1)
19	K12-000019	V ROPE 820MM (LACING)	皮带	1
20	K12-000020	MOTOR PULLEY 60HZ 1300RPM ASM.	皮带轮组	1
21	K12-000021	SCREW	螺钉	(1)
22	K12-000022	MOTOR PULLEY 50HZ - 1300RPM ASM	皮带轮组	1
23	K12-000023	SCREW	螺钉	(2)
24	K12-000024	THREAD STAND ASM	线架组	1

SIRUBA

PARTS LIST

Series

PK511J

Subject

PK511J-T2 TABLE BOARD DRAWINGS

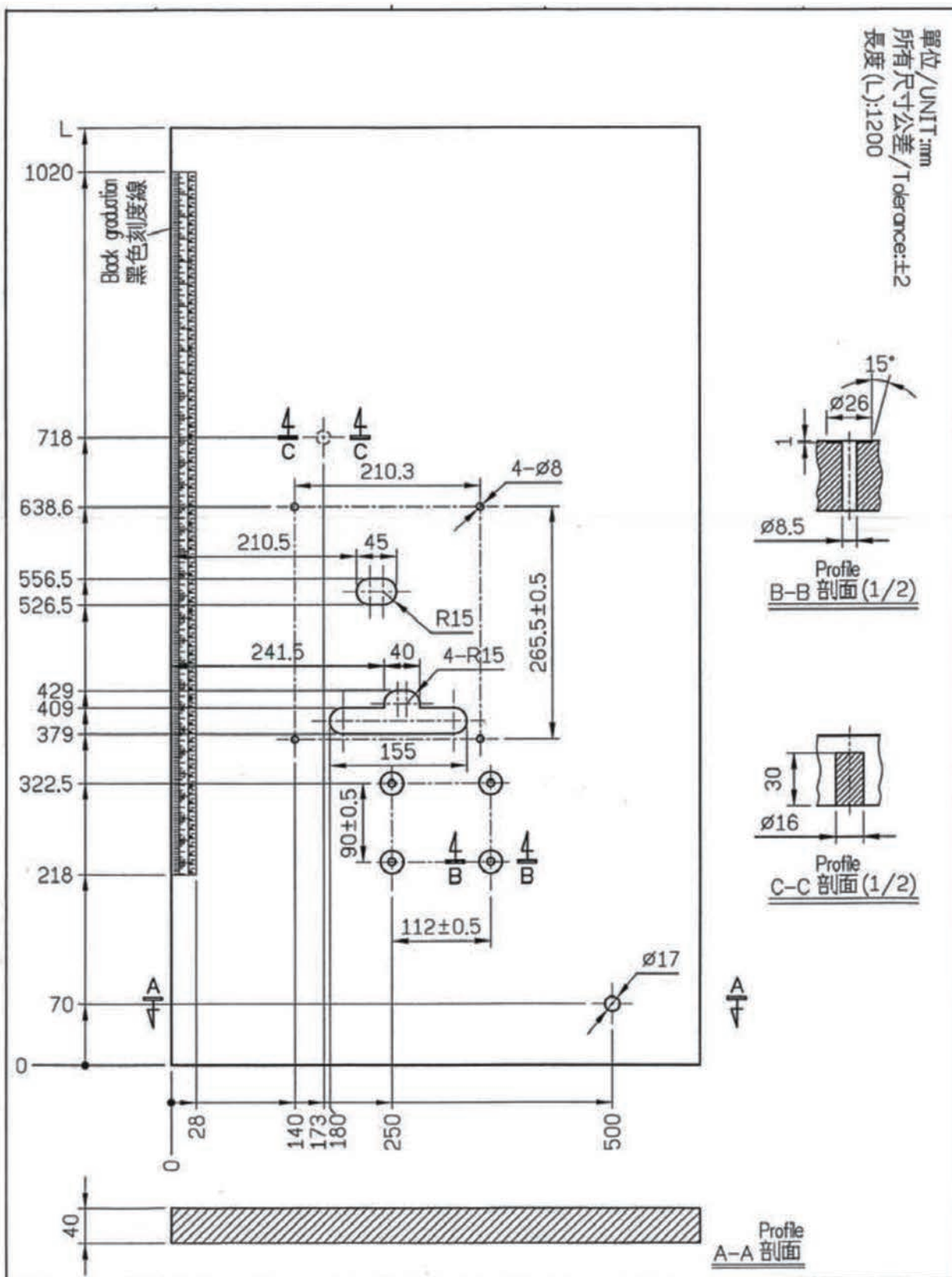
PK511J-T2 桌板圖

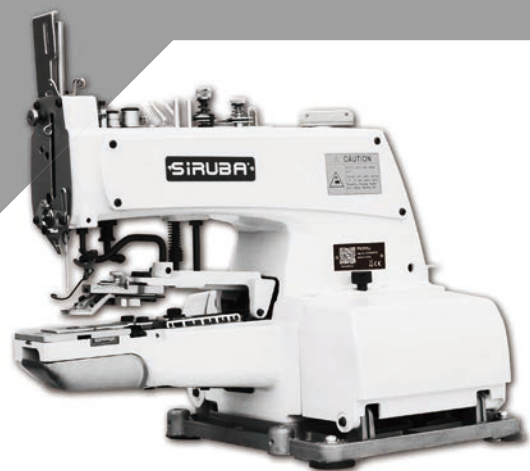
Page

1 / 1

Date

2014/06/17





高林股份有限公司
KAULIN MFG. CO., LTD.

由於對產品的改良及更新，本產品零件圖及外觀的修改恕不事先通知！
The specification and/or appearances of the equipment described in this parts list are
subject to change because of modification which will without previous notice.
JLL-05A02.JUN.2021