

# SIRUBA

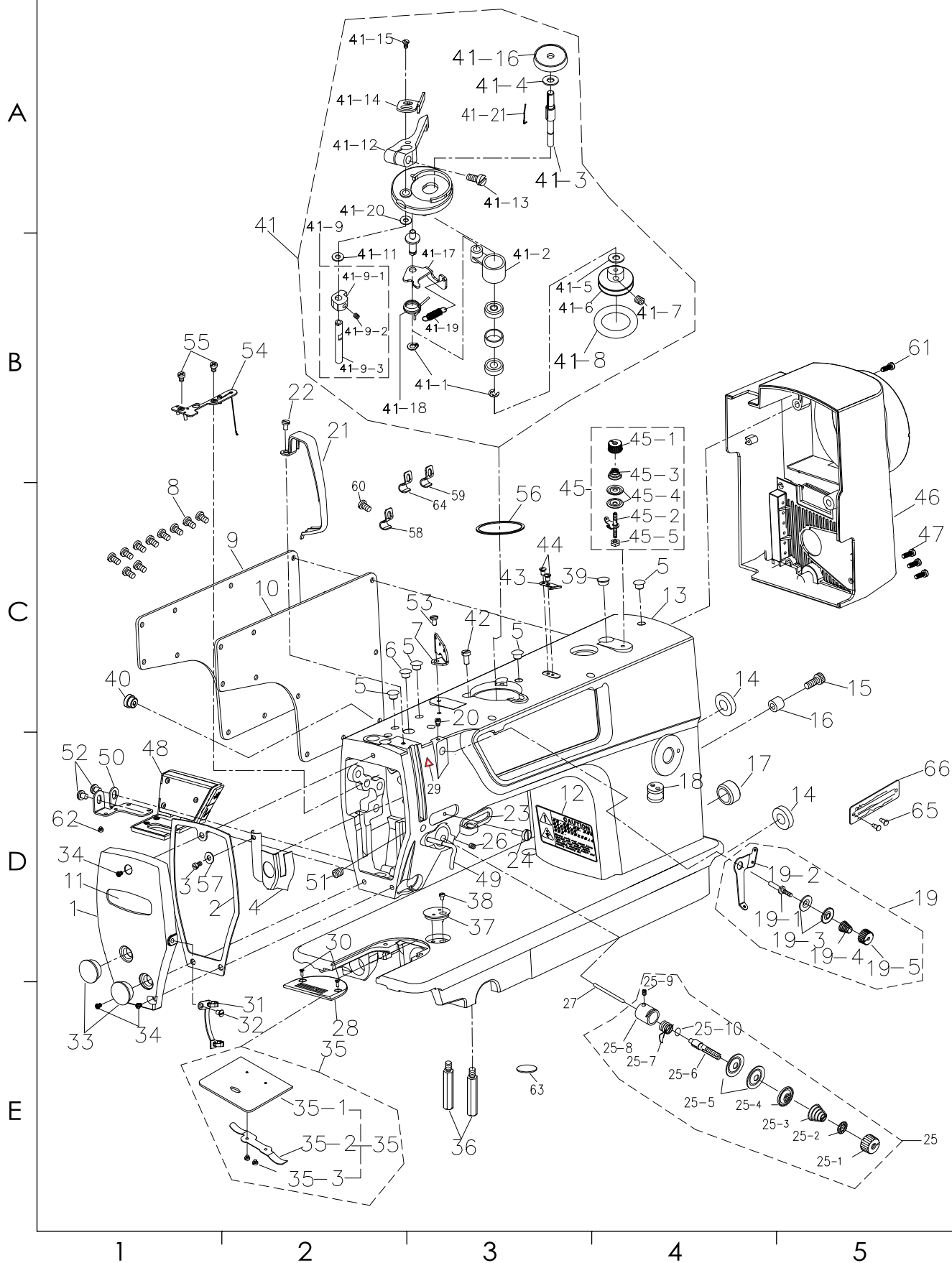
零件圖

PARTS LIST

DL7210



SIRUBA PARTS LIST	Series	Parts Group	Subclass Remark	Page
	DL7210	01		1 / 1
				Date
				2023/11/14



SiRUBA SEQUENCE LIST		Series	Parts Group	Subclass Remark	Page	
		DL7210	01		1 / 3	
					Date	
					2023/11/14	
	序號 Ref.No	新編號 new part No.	名稱 Part name	Name of parts	數量 (Qty)	
					BM1	BH1
A	1	280001001	面板	Face plate	1	1
	2	280001002	面板墊	Face plate agsket	1	1
	3	S073184404	防油板螺釘	Screw 1/8×44 L=4	1	1
	4	280001004	面部防油板	Arm oil shield	1	1
	5	991001005	橡膠塞	Rubber plug	4	4
	6	991001006	針杆曲柄螺孔塞	Rubber plug	1	1
	7	991001007	三眼過線板	Thread guide rod	1	1
B	8	S094762809	後窗板螺釘	Screw 3/16×28 L=9	11	11
	9	280001009	後窗板	Side plate	1	1
	10	280001010	後窗板墊	Gasker	1	1
	11	280001011	面板商標牌	Face plate	1	1
	12	991001012	安全指示牌	Safety lable	1	1
	13	281001013	機殼組件	Machine cover	1	1
		281001013D	機殼組件	Machine cover		
C	14	991001014	送料調節器孔塞	Rubber plug	1	1
	15	720001015	倒縫限位套緊固螺釘	Screw	1	1
	16	280001076	倒縫限位套	Reverse feed lever stopper	1	1
	17	991001017	下軸盲孔塞	Rubber plug	1	1
	18	991001018	導線過線套(2孔)	Magnet cord rubber	1	1
		991001018-1	導線過線套(3孔)	Magnet cord rubber	1	1
	19	280001019	小夾線器組件	Thread tension asm	1	1
D	19-1	991001019-1	小夾線螺釘	Small clip line screw	1	1
	19-2	991001019-2	小夾線過線板	Thread tension guide	1	1
	19-3	991001019-3	小夾線板	Thread tension disk	2	2
	19-4	991001019-4	小夾線簧	Thread tension spring	1	1
	19-5	280001019-5	小夾線螺母	Thread tension nut	1	1
	20	S114374006	小夾線組件支架螺釘	Screw	1	1
	21	991001021	挑線防護罩	Thread take-up lever cover	1	1
E	22	S094762806	挑線防護罩螺釘	Screw 3/16×28 L=6	1	1
	23	991001023	右線鉤	Arm thread guide right	1	1
	24	S074374006	右線鉤螺釘	Screw 11/64×40 L=6	1	1
	25	281001025	夾線器組件	Thread tension asm	1	
		281001025H	夾線器組件	Thread tension asm		1
	25-1	281001025-1	夾線螺母	Tension nut	1	1
	25-2	991001025-2	夾線止動板	Rotating stopper	1	1
	25-3	991001025-3	夾線簧	Rotating stopper	1	
		991001025-3H	夾線簧	Rotating stopper		1
	25-4	991001025-4	夾線壓板	Thread tension disk nresser	1	1
	25-5	991001025-5	夾線板	Thread tension disk	2	2
	25-6	991001025-6	夾線螺釘	Tension post	1	1
	25-7	991001025-7	挑線簧	Take-up spring	1	
		991001025H-7	挑線簧(厚料)	Take-up spring		1
	25-8	991001025-8	調線簧調節座	Tension post socket	1	1
	25-9	S143574005	夾線螺絲緊固螺釘	Screw 9/64×40 L=5.5	1	1

1

2

3

4

5

SiRUBA  SEQUENCE LIST	Series		Parts Group	Subclass Remark		Page
	DL7210		01			2 / 3
						Date
						2023/11/14
25-10	991001025-19	O型圈	O ring	1	1	
26	S115952811	夾線器支緊螺釘	Screw 15/64×28 L=7	1	1	
27	LA1137	松線釘	Tension releasing	1	1	
28	E1711	針板（薄料/4排牙）	Throat plate	1		
	991001028H	針板（大針距/3排牙）	Throat plate		1	
	030301022	針板 B2.6(大旋梭/3排牙)	Throat plate			
29	280001071	安全標示	Safety marking	1	1	
30	S044374006Z	針板螺釘	Screw 11/64×40 L=6	2	2	
31	280001031	左線勾	Arm thread guide left	1	1	
32	S074374006	左線勾螺釘	Screw 11/64×40 L=6	1	1	
33	991001033	面板調節孔塞	Rubber plug	2	2	
34	S094762811	面板螺釘	Screw 3/16×28 L=11	3	3	
35	991001035	推板組件	Slide plate asm	1	1	
	991001035D	推板組件（大旋梭）	Slide plate asm			
35-1	991001035-1	推板	Slide plate	1	1	
35-2	991001035-2	推板簧	Bed slide spring	1	1	
	991001035-2D	推板簧	Bed slide spring			
35-3	S082385602	推板簧螺釘	Screw 3/32×56 L=2.2	2	2	
36	991001036	底板支柱	Bed slide spring	4	4	
37	280001037	卷邊器	Ruler stopper	1	1	
38	S074374006	卷邊器螺釘	Screw 11/64×40 L=6	1	1	
39	991001058	橡膠塞	Rubber plug	1	1	
40	280001063	操作面板出線橡膠塞	Rubber plug	1	1	
41	280001041	繞線器組件	Winder assembly	1	1	
41-1	991001041-1	擋圈E4	Ring E4	2	2	
41-2	991001041-2	繞線軸基座	Bobbin base	1	1	
41-3	991001041-3	繞線軸	Spool	1	1	
41-4	991001041-4	O型圈P9	O ring	1	1	
41-5	991001041-5	平墊圈S6	Flat washer	1	1	
41-6	991001041-6	繞線輪	Winding wheel	1	1	
41-7	991001041-7	螺釘M5X5	Screw M5x5	2	2	
41-8	991001041-8	橡皮墊圈29	Rubber washer	1	1	
41-9	991001041-9	梭芯夾凸輪組件	Shuttle cam asm.	1	1	
41-9-1	991001041-9-1	梭芯夾凸輪	Shuttle cam	1	1	
41-9-2	991001041-9-2	螺釘M5X5	Screw M5x5	1	1	
41-9-3	991001041-9-3	梭芯夾軸	Shuttle clamp shaft	1	1	
41-11	991001041-11	平墊圈S6	Flat washer	2	2	
41-12	991001041-12	梭芯壓臂柄	Shuttle arm handle	1	1	
41-13	991001041-13	螺釘M4X12	Screw	1	1	
41-14	991001041-14	梭芯夾	Bobbin clip	1	1	
41-15	991001041-15	螺釘SM4.76	Screw	2	2	
41-16	991001041-16	梭芯座	Bobbin base	1	1	
41-17	991001041-17	繞線杠杆	Winding lever	1	1	
41-18	991001041-18	彈簧	Spring	1	1	
41-19	991001041-19	彈簧	Spring	1	1	
41-20	991001041-20	O型密封圈S5	O type sealing ring	1	1	
41-21	991001041-21	卡簧		1	1	
42	M080500810	繞線器螺釘	Bobbin screw	3	3	

1

2

3

4

5

1

2

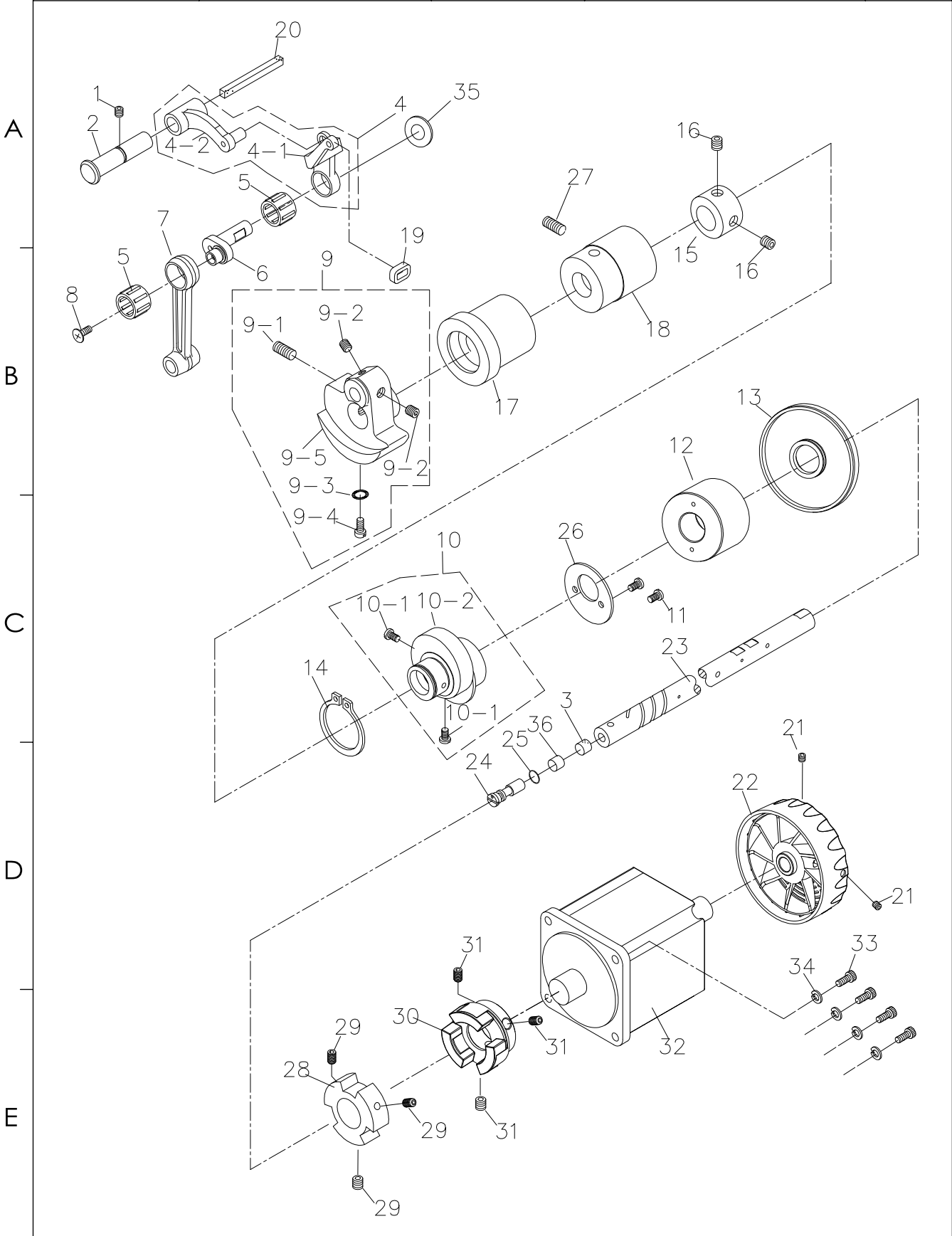
3

4

5

SiRUBA SEQUENCE LIST	Series		Parts Group	Subclass Remark		Page
	DL7210		01			3 / 3
						Date
						2023/11/14
A	43	991001043	割線刀	Knife	1	1
	44	S093574005	割線刀螺釘	Knife screw	2	2
	45	280001045	繞線夾線器組件	Thread tension asm.	1	1
	45-1	280001045-1	夾線螺母	Tension nut	1	1
	45-2	991001045-2	夾線螺釘	Tension post	1	1
	45-3	991001045-3	夾線彈簧	Tension spring	1	1
	45-4	991001045-4	夾線板	Thread tension disk presser	2	2
	45-5	991001045-6	夾線螺母（下）	Tension nut	1	1
B	46	721001046	電控組件	Motor cover	1	1
	47	M180500835	電控螺釘	Screw	3	3
	48	3801202101U	倒縫燈開關元件	Reverse seam lamp switch assembly	1	1
	49	280001049	大線勾	Presser bar thread guide	1	1
	50	280001050	倒縫燈開關支架	Switch support for reverse seam lamp	1	1
	51	S153574006	大線勾緊定螺釘	Screw	1	1
	52	S094762806	倒縫燈開關固定螺釘	Screw	2	2
	53	S074374007	三眼線勾螺釘	Screw	1	1
C	54	991001052	油線板組件	Oil plate assembly	1	1
	55	S093574016	油線板固定螺釘	Screw	2	2
	56	991001056	繞線器墊片	Bobbin Washer	1	1
	57	600011037	防油板墊片	Grease plate gasket	1	1
	58	280001066-1	線夾1	Wire clip 1	1	1
	59	280001066	線夾2	Wire clip 2	1	1
	60	S094762806	線夾螺釘	Screw	1	1
	61	M180508020	電控螺釘	Screw	1	1
D	62	M090300506	支架螺釘	Screw	4	4
	63	280001074	檢驗標示	Inspection sign	1	1
	64	991001062	線夾	Clamp	1	1
	65	991001039	鉚釘	Pole	2	2
	66	282001040	型號牌	Modle plate	1	1
E						

<div>SIRUBA</div> <div>PARTS LIST</div>	Series	Parts Group	Subclass Remark	Page
	DL7210	02		1 / 1
				Date
				2023/11/14



SiRUBA SEQUENCE LIST		Series	Parts Group	Subclass Remark	Page	
		DL7210	02		1 / 2	
					Date	
					2023/11/14	
	序號 Ref.No.	新編號 new part No.	名 稱 Part name	Name of parts	數量 (Qty)	
					BM1	BH1
A	1	991002001	挑線連杆銷螺釘	Screw 15/64×28 L=10.5	1	1
	2	991002002	挑線連杆銷	thread take-up crank shaft	1	1
	3	280003036	曲柄油量限制甕	Roller felt	1	1
B	4	991002004	挑線連杆組件	thread take-up lever asm	1	
		991002004H	挑線連杆組件 (厚料)	thread take-up lever asm (heavy duty)		1
		991002004D	挑線連杆組件 (鋁制厚料)	thread take-up lever asm		
	4-1	991002004-1	挑線杆	take-up lever	1	
		991002004-1H	挑線杆	take-up lever		1
		991002004-1D	挑線杆	take-up lever		
	4-2	991002004-2	挑線連杆	Pick line connecting rod	1	
	5	991002005	挑線杆滾針軸承	Needle bearing	2	2
	6	991002006	挑線曲柄	Needle bar crank	1	
		991002006H	挑線曲柄 (厚料)	Needle bar crank (heavy duty)		1
C	7	991002007	針杆連杆	Needle bar crank rod	1	1
	8	991002008	挑線曲柄左旋螺釘	Left screw 9/64×40 L=4.8	1	1
	9	991002009	針杆曲柄組件	Needle bar crank asm	1	
		870002015H	針杆曲柄組件 (厚料)	Needle bar crank asm (heavy duty)		
	9-1	S127142816	針杆曲柄緊固螺釘	Screw 9/32×28 L=16	1	1
	9-2	S116354006	挑線曲柄定位螺釘	Screw 1/4×40 L=6	2	2
	9-3	991002009-3	定位螺絲O型圈	Rubber O ring	1	1
	9-4	S077142815	針杆曲柄定位螺釘	Screw 9/32×28 L=15.5	1	1
	9-5	991002009-5	針杆曲柄	Needle bar crank	1	
		870002015H-1	針杆曲柄	Needle bar crank		1
D	10	991002010	送料偏心輪組件	Feed drive eccentric cam asm.	1	1
	10-1	S076354011	送料偏心輪螺釘	Screw 1/4×40 L=11	2	2
	10-2	991002010-2	送料偏心輪	Feed drive eccentric cam	1	1
	11	S093574006	送料偏心輪蓋板螺釘	Screw 9/64×40 L=6	2	2
	12	991002012	上軸後套	Mainshaft back bush	1	1
	13	991002013	上軸後套油封	Oil seal of mainshaft back bush	1	1
	14	S126354004	卡簧	Snap ring	2	2
	15	991002015	上軸擋圈	Thrust collar asm	1	1
	16	S116354006	上軸擋圈螺釘	Screw 1/4x40 L=6	2	2
	17	991002017	上軸前軸套	Main shaft front bushing asm.	1	1
E	18	870002008	上軸中軸套	Bushing intermediate	1	1
	19	991002019	挑線杆橡皮套	Rubber	1	1
	20	991009008	挑線連杆銷供油線	Thread take-up crank shaft felt	1	1
	21	M140500806	手輪螺釘	Screw	2	2

1

2

3

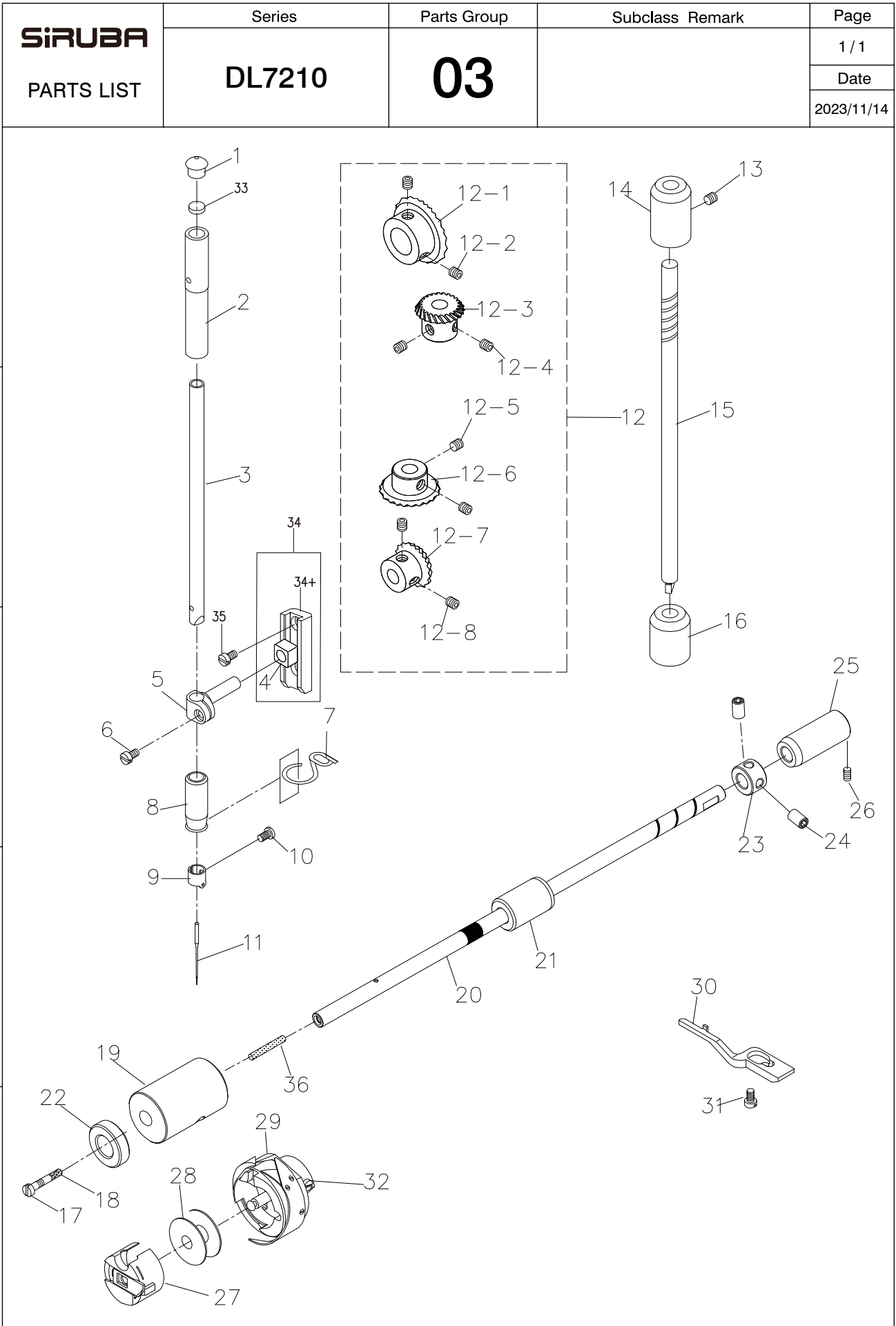
4

5



SIRUBA  SEQUENCE LIST		Series		Parts Group		Subclass Remark		Page	
		DL7210		02				2 / 2	
								Date	
								2023/11/14	
A	22	280002022	手輪	Hand wheel	1	1			
	23	991002023	上軸	Main shaft, upper	1	1			
	24	991002024	上軸油量調節銷	Oil amount adjusting pin	1	1			
	25	991002025	上軸油量調節銷O型圈	Rubber ring	1	1			
	26	991002026	送料偏心輪蓋板	Thrust collar	1	1			
	27	S145952806	上軸中軸套螺釘	Screw	1	1			
	28	991002028	聯軸器 (A)	Connect block A	1	1			
	29	M140601008	連軸器螺釘	Screw M6×6	3	3			
	30	991002030	聯軸器 (B)	Connect block B	1	1			
	31	M150601006	聯軸器 (B) 固定螺釘	Screw	3	3			
B	32	991002032	直驅電機組件	Motor asm.	1	1			
		991002032D	直驅電機組件 (三代)	Motor asm.	1	1			
	33	M180500822	電機安裝螺釘M5X22	Screw	4	4			
	34	991002034	電機安裝螺釘墊片	Washer	4	4			
	35	W220801605	挑線杆墊片	Washer	1	1			
W220801605-1		挑線杆墊片	Washer	1	1				
C	36	870002013	油量銷套	Oil throttle	1	1			
D									
E									





<b>SIRUBA</b> SEQUENCE LIST		Series	Parts Group	Subclass Remark	Page	
		DL7210	03		1 / 2	
					Date	
					2023/11/14	
	序號 Ref.No.	新編號 new part No.	名 稱 Part name	Name of parts	數量 (Qty)	
					BM1	BH1
A	1	991003001	針杆上孔塞	Upper Cap	1	1
	2	991003002	針杆上套	Needle bar bushing upper	1	1
	3	991003003	針杆	Needle bar	1	1
		991003003H	針杆 (厚料)	Needle bar (heavy duty)		1
	4	9910030046	針杆連接柱滑塊	Slide block	1	1
B	5	991003004	針杆連接柱	Needle rod holder asm.	1	1
	6	S073574007	針杆連接柱螺釘	Screw 9/64×40 L=7.5	1	1
	7	991003007	針杆下套線鉤	Needle bar thread guide	1	1
	8	991003008	針杆下套	Needle bar bushing lower	1	
		991003008H	針杆下套 (大旋梭)	Needle bar bushing lower		1
C	9	991003010	針杆過線環	Needle bar thread guide	1	1
		030302025	針杆過線環 (9911機型)	Needle bar thread guide		
	10	S083184405	機針螺釘	Screw 1/8×44 L=4.8	1	1
	11	991014011	機針 DBx1 14#	Needle DBx1 #14	1	
		991003011H-5	機針 DPx5 20#	Needle DPx5 #20		1
D	12	991003012	傘齒輪組件	Gear pinion asm.	1	1
	12-1	991003014	上軸傘齒輪	Gear asm.	1	1
	12-2	S116354008	傘齒輪螺釘	Screw 1/4×40 L=8	2	2
	12-3	991003016	豎軸上傘齒輪	Pinion asm.	1	1
	12-4	S116354008	傘齒輪螺釘	Screw 1/4×40 L=8	2	2
E	12-5	S116354008	傘齒輪螺釘	Screw 1/4×40 L=8	2	2
	12-6	991003019	豎軸下齒輪	Gear asm.	1	1
	12-7	991003021	下軸傘齒輪	Pinion asm.	1	1
	12-8	S116352808	傘齒輪螺釘	Screw	2	2
	13	S145952806	豎軸上套緊固螺釘	Screw	1	1
	14	991003016-1	豎軸上軸套	Upright shaft bushing,lower	1	1
	15	991003014-1	豎軸	Upright shaft	1	1
	16	991003017	豎軸下軸套	Upright shaft bushing,lower	1	1
	17	991003028	下軸限油螺釘	Oil seal screw	1	1
	18	991003027	下軸限油芯	Oil wick	1	1
	19	991003026	下軸前軸套	Lower shaft front metal	1	1
		991105012	下軸前軸套 (9911機型)	Lower shaft front metal		
	20	991003022	下軸	Lower shaft	1	1
		991107001	下軸 (9911機型)	Lower shaft		
	21	991006047	下軸中套	Lower axle sleeve	1	1
	22	030306031	下軸左套油封	Oil Seal	1	1
	23	991003020	下軸擋圈	Thrust collar asm.	1	1

1

2

3

4

5

SIRUBA  SEQUENCE LIST		Series	Parts Group	Subclass Remark	Page	
		DL7210	03		2 / 2	
					Date	
					2023/11/14	
	24	S074374005	下軸擋圈螺釘	Screw 11/64×40 L=5	2	2
	25	991003018	下軸後軸套	Bushing rear	1	1
	26	S145952806	下軸後軸套螺釘	Screw	1	1
	27	991003030	梭殼	Bobbin case	1	1
		030306010	梭殼（配9911）	Bobbin case		
	28	991003029	梭芯	Bobbin	1	1
		030306011	梭芯（配9911）	Bobbin		
	29	991003015	旋梭	Hook asm.	1	1
		030306012	大旋梭(9911機型)	Big Hook asm.		
	30	991003023	旋梭定位勾	Bobbin case holder	1	1
		870013014	旋梭定位勾(9911機型)	Bobbin case holder		
	31	S084374011	旋梭定位勾螺釘	Screw SM11/64×40 L=11	1	1
	32	991003032	旋梭螺釘	Screw	3	3
	33	280003036	針杆油氈	Needle bar linoleum	1	1
	34	991003032A	針杆連接柱滑塊座元件	Slide block	1	1
	34+	991003032	針杆連接柱滑塊座	Slide block	1	1
	35	S074374008	滑塊座螺釘	Screw	2	2
	36	LL1122	油芯	Oil core	1	1

1

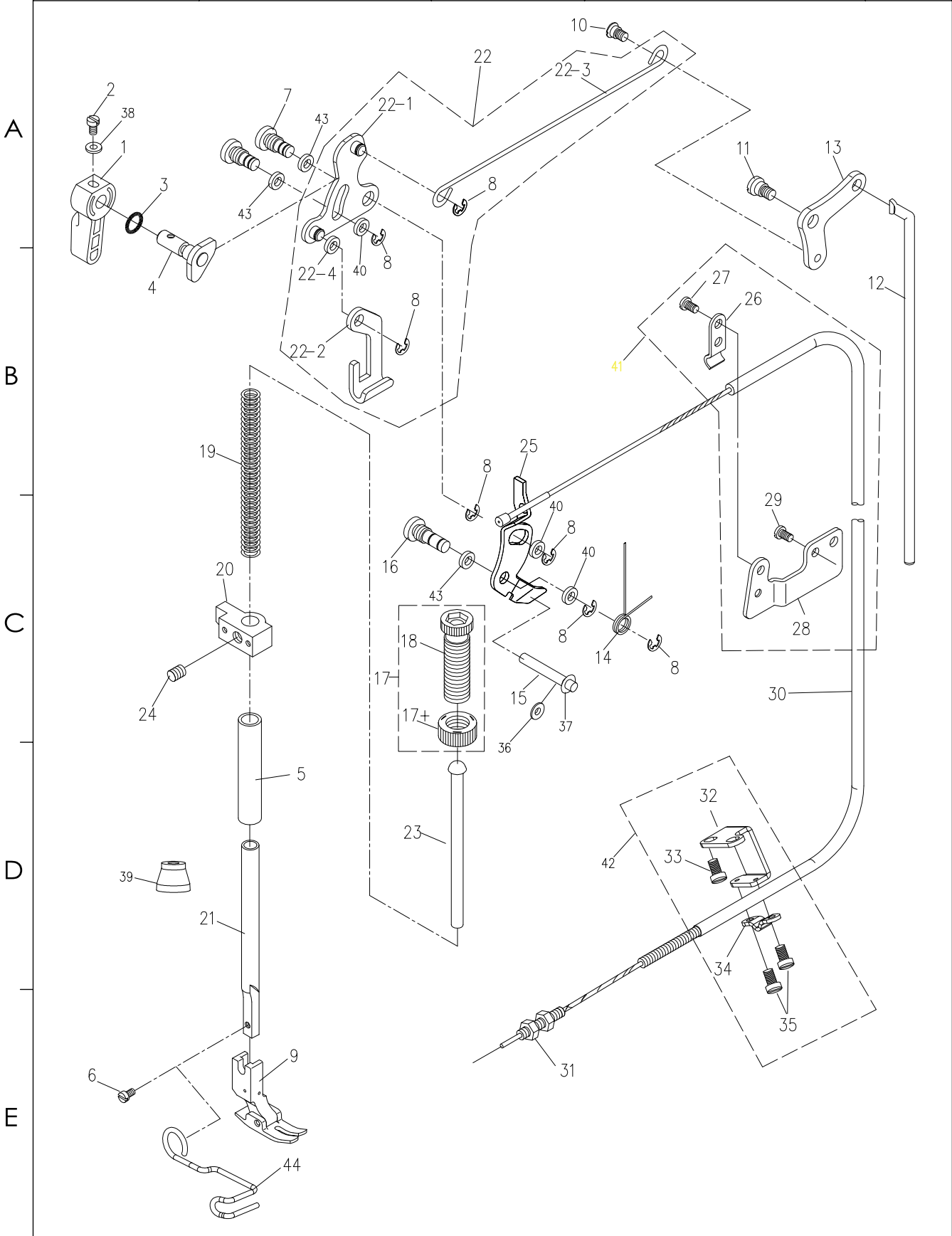
2

3

4

5

SIRUBA PARTS LIST	Series	Parts Group	Subclass Remark	Page
	DL7210	04		1 / 1
				Date
				2023/11/14



<b>SIRUBA</b> SEQUENCE LIST		Series		Parts Group	Subclass Remark		Page
		DL7210		04			1 / 2
							Date
							2023/11/14
	序號 Ref.No	新編號 new part No.	名 稱 Part name	Name of parts	數量 (Qty)		
					BM1	BH1	
A	1	991004001	壓腳扳手	Hand lifter	1	1	
	2	991004002	壓腳扳手螺釘	Screw 9/64×40 L=10	1	1	
	3	991004003	壓腳扳手軸0型圈	Rubber ring	1	1	
	4	LB1112	壓腳扳手凸輪部件	hand lifter cam asm	1	1	
	5	991004005	壓杆軸套	Presser bar bushing lower	1	1	
	6	S073574011	壓腳螺釘	Screw 9/64×40 L=11	1	1	
	7	991004007	前杠杆螺紋銷	Link shaft	2	2	
	8	991004008	擋圈E5	E-ring 5	7	7	
B	9	720003003	壓腳部件	Presser foot asm	1		
		991004009H	壓腳部件(厚料)	Presser foot asm		1	
	10	991004010	抬壓腳拉杆螺釘	Hinge screw	1	1	
	11	991004011	後杠杆軸拉螺釘	Hinge screw	1	1	
	12	991004012	抬壓腳頂杆	Knee lifter connecting rod	1	1	
	13	991004013	抬壓腳後杠杆	Lifting lever link	1		
	14	991004022	松線頂板復位簧	Tension release return spring	1		
		991004022H	松線頂板復位簧(厚料)			1	
C	15	991001027	松線輔釘	Tension release supporting pin	1	1	
	16	991004026	松線頂板螺紋銷	Tension release shaft	1	1	
	17	991004028A	調壓螺釘螺母組件	Presser adjurting screw nut	1		
	17+	991004027	調壓螺母	Presser adjurting screw nut	1		
		991004029JH	調壓螺母(厚料)	Presser adjurting screw nut H		1	
	18	991004028	調壓螺釘	Presser spring regulator	1		
		991004028JH	調壓螺釘(厚料)	Presser spring regulator H		1	
	19	991004029	調壓簧	Presser adjurting spring	1		
D		870004004	調壓簧(厚料)	Presser adjurting spring H		1	
	20	280004006	壓杆導架	Presser bar guide bracket	1	1	
	21	991004031	壓杆	Presser bar	1	1	
	22	281004019	前杠杆組件	Knee lifting cross rod asm	1	1	
	22-1	991004032-1	抬壓腳前杠杆	Hand lifter link	1	1	
	22-2	991004032-2	壓腳升降板	Lifting lever	1	1	
	22-3	180004022	抬壓腳拉杆	Knee lifting cross rod	1	1	
	22-4	280004019-4	墊圈	Washer	1	1	
E	23	991004033	調壓導杆	Presser guide bar	1	1	
	24	S126354006	導架螺釘	Screw	1	1	
	25	991004025	松線頂板	Thread tension relese wire	1	1	
	26	991004017	拉線壓板	Stay plate	1	1	
	27	S073574007	上壓板緊固螺釘	Screw 9/64×40 L=7	1	1	

<div> <div>SIRUBA</div> <div>SEQUENCE LIST</div> </div>		Series		Parts Group	Subclass Remark		Page
		DL7210		04			2 / 2
							Date
							2023/11/14
A	28	991004019	上壓線底板	Wire holder bracket upper	1	1	
	29	S094762806	上壓板組件緊固螺	Screw 3/16×28 L=6	1	1	
	30	991004034	拉線（長）	Pull line(long)	1	1	
		991004034-D	拉線（短）	Pull line(short)	1	1	
	31	991004020	拉線調節螺母	Nut 3/16×32	2	2	
	32	991004023	松線鋼繩下支架	Lower bracket	1	1	
	33	S095952810	下支架緊固螺釘	Screw 15/64×28 L=10	2	2	
	34	991004021	下拉線壓板	Down stay plate	1	1	
	35	S073574014	下壓板緊固螺釘	Screw 9/64×40 L=7	2	2	
	36	870003033	擋油墊	Oil retaining pad	1	1	
B	37	930001065	卡簧	Reed spring	1	1	
	38	991004042	墊片	Shim	1	1	
	39	991004041	擋油帽	Oil retaining cap	1	1	
	40	991002036	墊片	Shim	3	3	
		991002036H	墊片	Shim	3	3	
C	41	991004037	上支架組件	Subassembly	1	1	
	42	991004038	下支架組件	Lower bracket assembly	1	1	
	43	991004039-1	紅紙墊	Rubber gasket	3	3	
	44	991004036	壓腳保護架		1	1	
D							
E							

SIRUBA PARTS LIST	Series	Parts Group	Subclass Remark	Page
	DL7210	05		1 / 1
				Date
				2023/11/14

A

B

C

D

E

1

2

3

4

5



SIRUBA SEQUENCE LIST		Series		Parts Group	Subclass Remark		Page
		DL7210		05			1 / 2
							Date
							2023/11/14
	序號 Ref.No	新編號 new part No.	名 稱 Part name	Name of parts	數量 (Qty)		
					BM1	BH1	
A	1	991005001	倒送料連杆	Reverse feed adjust rod	1	1	
		991005001D	倒送料連杆 (通用大針距的)	Reverse feed adjust rod(big hook)			
	2	991005002	倒送料連杆銷	Reverse feed regulator pin	1	1	
		991005002D	倒送料連杆銷2.3 (大旋梭)	Feed regulator pin			
	3	S093574006	倒送料連杆銷螺釘	screw	2	2	
B	3+	M140500806	送料調節器緊固螺釘	screw	2	2	
	4	991005004	送料調節器	Feed regulator	1	1	
		991005004D	送料調節器 (大針距)	Feed regulator (Big needle distance)			
	5	991005005	送料調節器軸套	Feed regulator bushing	1	1	
	6	991005006	送料調節器軸	Feed regulator shaft	1	1	
C	7	991005007	針距調節螺杆	Feed regulator screw	1	1	
	8	030304044	止動銷彈簧	Spring	2	2	
	9	030304043	止動銷	Feed adjustpin	1	1	
	10	280005010X	針距旋鈕 (0-5)	Needle distance knob(0-5)	1	1	
		991005010-7	針距旋鈕 (0-7)				
D	11	S074762818	針距旋鈕螺釘	Screw 3/16×28 L=18	1	1	
	12	991005012	送料連杆	Rocker shaft connecting rod	1	1	
	13	991005013	送料連杆銷	Walking foot long pin	1	1	
	14	S083574004	送料連杆銷螺釘	Screw 9/64×40 L=4	1	1	
	15	991005015	抬牙連杆	Connecting rod	1	1	
E	16	991005016	針距調節螺杆0型圈	Rubber ring	1	1	
	17	991005017	擺動板座復位簧	Feed reverse spring	1	1	
	18	991005018	擋圈E5	E-ring 5	2	2	
	19	991005019	倒送料曲柄組件	Feed reverse arm asm.	1	1	
		991005019D	倒送料曲柄組件 (大針距)	Feed reverse arm asm(Big needle distance)			
	20	S074762815	倒送料曲柄螺釘 Screw SM3/16×28 L=14	Feed reverse arm screw	1	1	
	21	991005021	倒送料拉簧	Spring	1	1	
	22	991005022	短擺動板連接銷	Walking foot short pin	2	2	
	23	991005023	長擺動板	Connecting link long pin	2	2	
	24	991005024	短擺動板	Connecting link short pin	2	2	
	25	991005025	擺動座	Feed adjust link asm	1	1	
	26	991005026	擺動板座左銷	Adjusting link fulcrum shaft	1	1	
	27	991002001	左右銷螺釘	Screw 15/64×28 L=7	2	2	
	28	S123574005	連杆銷螺釘	Screw 9/64×40 L=5	2	2	
	29	991005029	牙架偏心銷	Feed bar shaft	1	1	
	30	991005030	軸用卡簧	Retaining ring	1	1	
	31	991005031	送布牙	Feed dog	1		
		991005031H	送布牙 (厚料/3排牙)	Feed dog (H. 3 row)		1	
		030304001	送布牙 (大旋梭/3排牙)	Feed dog (big hook, 3 row)			

1

2

3

4

5

SiRUBA  SEQUENCE LIST		Series		Parts Group	Subclass Remark		Page
		DL7210		05			2 / 2
							Date
							2023/11/14
A	32	S073184406	送布牙螺釘	Screw 1/8×44 L=6	2	2	
	33	991005033	牙架部件	Feed bar asm	1	1	
		991005033D	牙架部件(大旋梭)	Feed bar asm (big hook)			
	34	991005034	擺動板座復位板	Adjusting link spring guide	1	1	
	35	S074374007	復位板緊固螺釘	Screw 11/64×40 L=7	2	2	
	36	991005036	拉簧固定板	Feed spring hood	1	1	
	37	991005037	送布軸	Feed rocker shaft	1	1	
	38	991005038	送布曲柄銷	Walking foot middle pin	1	1	
	39	S073574008	曲柄銷螺釘	Screw 9/64×40 L=8	1	1	
	40	N217142805	抬牙連杆軸位螺母	Nut 9/32×28	1	1	
	41	991005041	送布曲柄	Feed rocker shaft crank	1		
		991005041H	送布曲柄（厚料）	Feed rocker shaft crank		1	
	42	S074762815	送布曲柄螺釘	Screw 3/16×28 L=15	1	1	
	43	991005043	抬牙後曲柄	Lifting rocker asm.	1	1	
	44	S074762815	抬牙後曲柄螺釘	Screw 3/16×28 L=15	1	1	
	45	991005045	抬牙連杆軸位螺釘	Hinge screw	1	1	
	46	991005046	抬牙軸	Feed driving shaft	1	1	
	47	991002015	擋圈	Thrust collar asm.	1	1	
	48	S126354004	送布軸擋圈螺釘	Screw 1/4×40 L=4	2	2	
	49	991005049	送布軸前軸套	Feed rocker shaft bushing	2	2	
		991005049D	送布軸前軸套(加長1.5mm)	Feed rocker shaft bushing			
	50	S084374007	牙架銷螺釘	Screw 11/64×40 L=7	2	2	
	51	991005030	軸用卡簧	Retaining ring	1	1	
	52	991005052	牙架座（牙架曲柄）	Feed bar crank asm.	1	1	
	53	S074762812	牙架座螺釘	Screw 3/16×28 L=12	1	1	
	54	991005054	抬牙叉	Driving shaft crank asm.	1	1	
		991005054D	抬牙叉	Driving shaft crank asm.			
	55	S084374012	抬牙叉螺釘	Screw 11/64×40 L=12	1	1	
	56	280005056	倒送料扳手組件	Reverse feed control lever asm.	1	1	
	56-1	991005056-1	倒送料軸O型圈	Rubber ring	1	1	
	56-2	991005056-2	倒送料軸	Feed reverse shaft	1	1	
	56-3	S145952806	倒送料扳手螺釘	Screw	2	2	
	56-4	991105056-5	倒送料扳手	Reverse frd control lever	1	1	
	57	991002015	擋圈	Thrust collar	1	1	
	58	S126354004	抬牙軸擋圈螺釘	Screw 1/4x40 L=6	2	2	
	59	991005059	擺動軸板座右銷	Adjusting link fulcrum shaft	1	1	
	60	991005060	倒送料軸軸套	Axle Sleeve	1	1	
	61	991005057	連杆組件M	Connecting rod assembly M	1	1	
		991005057H	連杆組件H	Connecting rod assembly H	1	1	
	62	280005068	針距按鍵	Stopper pin	1	1	
63	030304045	針距盤擋銷	Stopper pin	1	1		
64	280005069	針距按鍵簧	Spring	1	1		

1

2

3

4

5

<div>SIRUBA</div> <div>PARTS LIST</div>	Series	Parts Group	Subclass Remark	Page
	DL7210	06		1 / 1
				Date
				2023/11/14

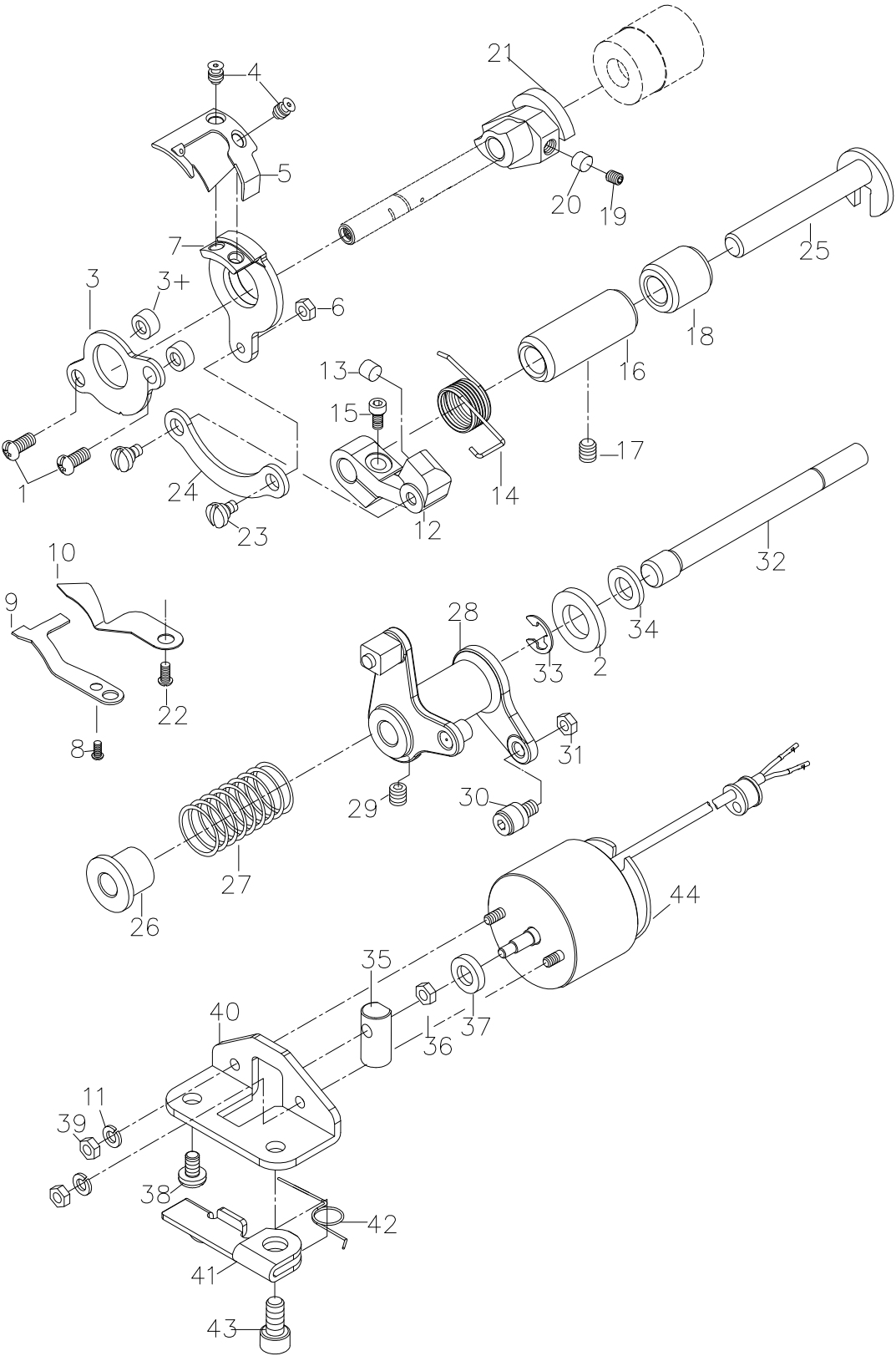
A

B

C

D

E



SIRUBA  SEQUENCE LIST		Series		Parts Group	Subclass Remark		Page
		DL7210		06			1 / 2
							Date
							2023/11/14
	序號	新編號	名 稱	Name of parts	數量 (Qty)		
	Ref.No.	new part No.	Part name		BM1	BH1	
A	1	S094374012	螺釘11/64” x40 L=	Screw SM11/64x40 L=12	2	2	
	2	991006049	驅動軸墊片	Washer	1	1	
	3	991006003	刀架壓板	Partiality shank	1	1	
	3+	991006003+	刀架壓板墊圈	Partiality shank washer	2	2	
	4	991006004	動刀固定螺釘	Screw	2	2	
B	5	991006005	動刀	Motorial knife	1		
		991006005H-1	動刀（厚料）	Motorial knife (heavy duty)		1	
		991006005D	動刀（大旋梭）	Motorial knife (big hook)			
6	991006006	螺母SM11/64”x40	Nut SM11/64x40	1	1		
7	991006007	動刀架	Knife bracket	1	1		
	991110008	動刀架（9911機型）	Knife bracket				
8	S043574006	定刀調節螺釘	Screw	1	1		
9	LU1711	固定刀	Secant knife	1	1		
	991006009D	固定刀（大旋梭）	Secant knife(big hook)				
10	991006010	分線片	Protect needle patch	1	1		
11	991006048	墊圈4.5x8x0.5	Washer 4.5x8x0.5	2	2		
12	991006012	切刀驅動曲柄	Thread shear rock arm	1	1		
13	991006013	驅動曲柄止動塊	Positioning block	1	1		
14	991006014	彈簧	Spring	1	1		
15	S094763214	螺釘SM, 3/16” x32	Screw SM3/16x32 L=14	1	1		
16	991006016	切線軸套	Axle sleeve	1	1		
	991110021	切線軸套	Axle sleeve				
17	S125952806	螺釘	Screw SM15/64x28 L=6	1	1		
18	991006018	驅動曲柄軸襯套	Short bush	1	1		
19	S156354010	螺釘SM1/4” x40 L=	Screw SM1/4x40 L=10	2	2		
20	991006020	切線凸輪墊	Pole	2	2		
21	991006021	凸輪	Thread shear cam	1	1		
22	S073574006	螺釘SM9/64” x40 L=	Screw SM9/64x40 L=6	1	1		
23	991006023	連杆螺釘	Screw	2	2		
24	991006024	連杆	Knife shaft connecting rod	1	1		
25	991006025	切刀驅動曲柄軸	Cutter crank shaft	1	1		
	991110019	切刀驅動曲柄軸	Cutter crank shaft				
26	991006026	扭簧端蓋	Spring cover	1	1		
27	991006027	切線凸輪復位彈簧	Spring	1	1		
28	991006028	切線凸輪曲柄組件	Thread shear rock arm shaft	1	1		
29	S116354006	螺釘SM11/64” x40	Screw	1	1		
30	991006030	滾柱	Rool shaft assy	1	1		

1

2

3

4

5

<div>SIRUBA</div> <div>SEQUENCE LIST</div>		Series		Parts Group	Subclass Remark		Page
		DL7210		06			1 / 2
							Date
							2023/11/14
A	31	991006031	螺母	Nut	1	1	
	32	991006032	切刀驅動軸	Thread shear shaft	1	1	
		991006032D	切刀驅動軸	Thread shear shaft			
	33	991006033	卡簧E6	Retaining ring	1	1	
	34	991006034	電磁鐵緩衝墊	Magnetic plug cushion mat	1	1	
	35	991006035	切線電磁鐵頂銷	Magnetic plug pin	1	1	
	36	991006036	螺母SM1/4" x40	Nut SM1/4x40	1	1	
	37	991006037	墊圈	Washer	1	1	
	38	S075952810C	螺釘	Screw	1	1	
	39	991006039	螺母M4	Nut M4	2	2	
	40	991006040	切線電磁鐵支架	Magnetic plug cushion mat	1	1	
	41	991006041	松線座	Thread loose seat	1	1	
	42	991006042	彈簧	Spring	1	1	
	43	991006043	螺釘	Screw	1	1	
	44	991006044	剪線電磁鐵組件	Magnetic solenoid asm	1	1	
B							
C							
D							
E							
<div>1</div> <div>2</div> <div>3</div> <div>4</div> <div>5</div>							

PARTS LIST	Series	Parts Group	Subclass Remark	Page
	DL7210			1 / 1
				Date
				2023/11/14

A	07			
B	08			
C				
D				
E				

<b>SIRUBA</b> SEQUENCE LIST	Series	Parts Group	Subclass Remark	Page
	DL7210	07		1 / 1
				Date
				2023/11/14

<div>A</div> <div>B</div> <div>C</div>	序號	新編號	名 稱	Name of parts	數量 (Qty)	
	Ref.No.	new part No.	Part name		BM1	BH1
	1	991007001	自動倒縫部件	Reverse feed switch asm.	1	1
	2	991007002	自動倒縫拉杆	Reverse feed connecting	1	1
	3	991007003	自動倒縫拉杆螺釘	Reverse feed connecting shaft screw	1	1
	4	991007004	螺母	Nut	2	2
	5	991007005	倒縫曲柄	Connecting arm	1	1
	6	991007006	倒縫曲柄螺釘	Connecting arm screw	1	1
	7	991007007	倒縫鐵芯連杆 (57mm)	Reverse feed connecting link	1	1
		991007007D	倒縫鐵芯連杆(大旋梭, 大針距) (55mm)	Reverse feed connecting link		
	8	991007008	倒縫鐵芯擋圈	E-ring 20	1	1
	9	991007009	墊片	Washer 16x24x2.6	1	1
	10	991007010	橡膠墊片	Rubber plunger	1	1
	11	991007011	連接銷卡簧	E-ring 4	2	2
	12	991007012	倒縫鐵芯連接銷	Plunger arm pin	1	1
	13	991007013	倒縫電磁鐵	Reverse feed magnet asm.	1	1
	14	S075952812	電磁鐵緊固螺釘	Screw 15/64x28 L=12	2	2
	15	991007015	連杆定位簧	Plunger spring	1	1
	16	991007017	卡簧	Jump ring	1	1
	17	991007018	導線插針	Pin contact	2	2
	18	991007019	平墊片	Washer	2	2
	19	991007020	彈簧墊片	Spring washer	2	2
	20	991007021	油管壓板	Tubing clamp	1	1
	21	S094762806	油管壓板螺釘	Screw	1	1

<b>SIRUBA</b> SEQUENCE LIST	Series	Parts Group	Subclass Remark	Page
	DL7210	08		1 / 1
				Date
				2023/11/14

<div>A</div>	序號	新編號	名 稱	Name of parts	數量 (Qty)	
	Ref.No.	new part No.	Part name		BM1	BH1
	1	721008001	操作面板組件	Needle selection box asm.	1	1
	2	721008002	操作面板	Needle selection box	1	1
	3	930008005	電線	2-core cabtyre cord	1	1
	4	991008004	插針	Contact pin	1	1
	5	S144374006	螺釘	Screw SM11/64"x40 L=6	2	2
	6	991008005	電子夾線器元件	Electroni conductor holder asm.	1	1
	7	991008006	插針	Contact pin	1	1
	8	S124762805	電子夾線器固定螺釘	Screw SM3/16X28 L=5	1	1
	9	280008009	橡膠塞	Rubber stopper	1	1

1	2	3	4	5
---	---	---	---	---



<b>SIRUBA</b>  PARTS LIST	Series	Parts Group	Subclass Remark	Page
	DL7210	09		1 / 1
				Date
				2023/11/14

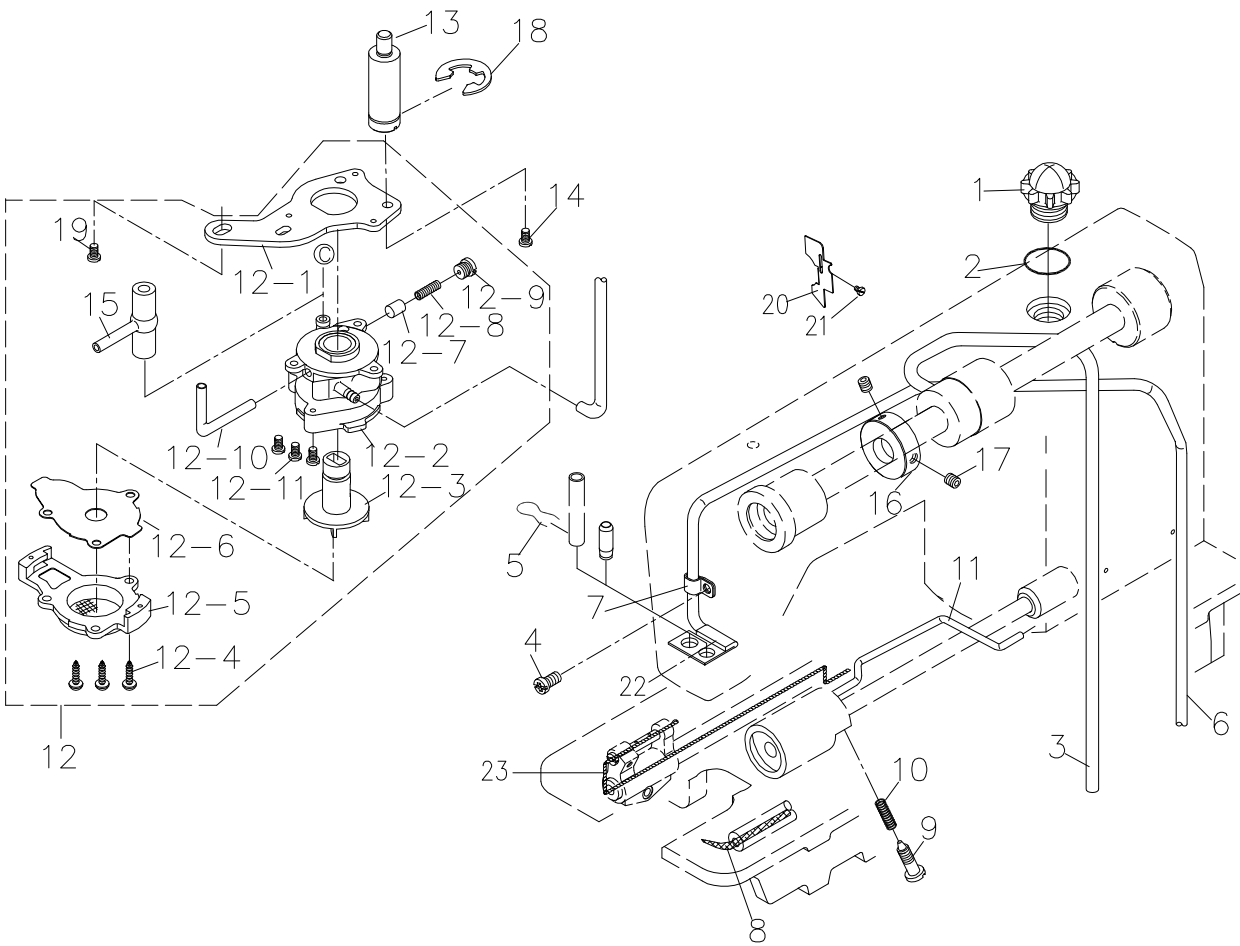
A

B

C

D

E



<b>SIRUBA</b> SEQUENCE LIST		Series	Parts Group	Subclass Remark	Page	
		DL7210	09		1 / 1	
					Date	
					2023/11/14	
	序號	新編號	名 稱	Name of parts	數量 (Qty)	
	Ref.No.	new part No.	Part name		BM1	BH1
A	1	991009001	油窗	Oil sight window	1	1
	2	991009002	油窗0型圈	Rubber ring	1	1
	3	280009006	上軸供油管	Main shaft oil tube	1	1
		991009003	上軸供油管B	Main shaft oil tube B	1	1
	4	S094762806	回油管夾螺釘	Screw 3/16x28 L=6	1	1
B	5	991009005	回油氈夾	Oil felt presser	1	1
	6	991009006	回油管	Oil return tube asm	1	1
	7	991009007	回油管夾	Holder	1	1
	8	991009008	送料軸油線	Oil wick	1	1
	9	991009009-1	旋梭油量調節螺釘	Oil adjusting screw	1	1
C	10	991009010	旋梭油量調節簧	Spring	1	1
	11	991009012-10	旋梭供油管	Oil tube	1	1
	12	991009012	油泵部件	Lubricating oil pump asm	1	1
	12-1	991009012-1	油泵安裝板	Oil pump installing base	1	1
	12-2	991009012-2	油泵體	Oil pump	1	1
D	12-3	991009012-3	油泵葉輪	Oil pump impeller	1	1
	12-4	991009012-4	油泵蓋螺釘	Screw	3	3
	12-5	991009012-5	油泵蓋	Lubricating oil pump cover	1	1
	12-6	991009012-6	油泵葉輪托板	Oil pump impeller cover	1	1
	12-7	991009012-7	回油柱塞	Plunger	1	1
E	12-8	991009012-8	柱塞簧	Plunger spring	1	1
	12-9	991009012-9	柱塞螺釘	Plunger screw	1	1
	12-10	991009012-10	下軸供油管	Hook driving shaft oil tube	1	1
		991009012-10+	下軸供油管(四自動)	Hook driving shaft oil tube	1	1
	12-11	M070300508	油泵安裝螺釘	Screw M3 L=8	3	3
	13	991009013	油泵連接螺柱	Oil pump support,large	1	1
	14	S074374010	油泵螺釘	Screw	1	1
	15	991009015	供油管接頭	Rubber joint	1	1
	16	991009016	繞線器驅動輪	Bobbin pulley	1	1
	17	S144374006	繞線器驅動輪螺釘	Screw	2	2
	18	991009017	卡簧	Jump ring	1	1
	19	ZSD15005	油泵螺釘	Screw 15/64x28 L=10	1	1
	20	720009018	擋板	Baffle	1	1
		991009018S	擋板	Baffle	1	1
	21	S094762806	擋板螺釘	Screw	1	1
	22	991009019	油氈	Asphalt felt	1	1
	23	991009008	送布油線	Delivery line	1	1

1

2

3

4

5

<b>SIRUBA</b>  PARTS LIST	Series	Parts Group	Subclass Remark	Page
	DL7210	10		1 / 1
				Date
				2023/11/14

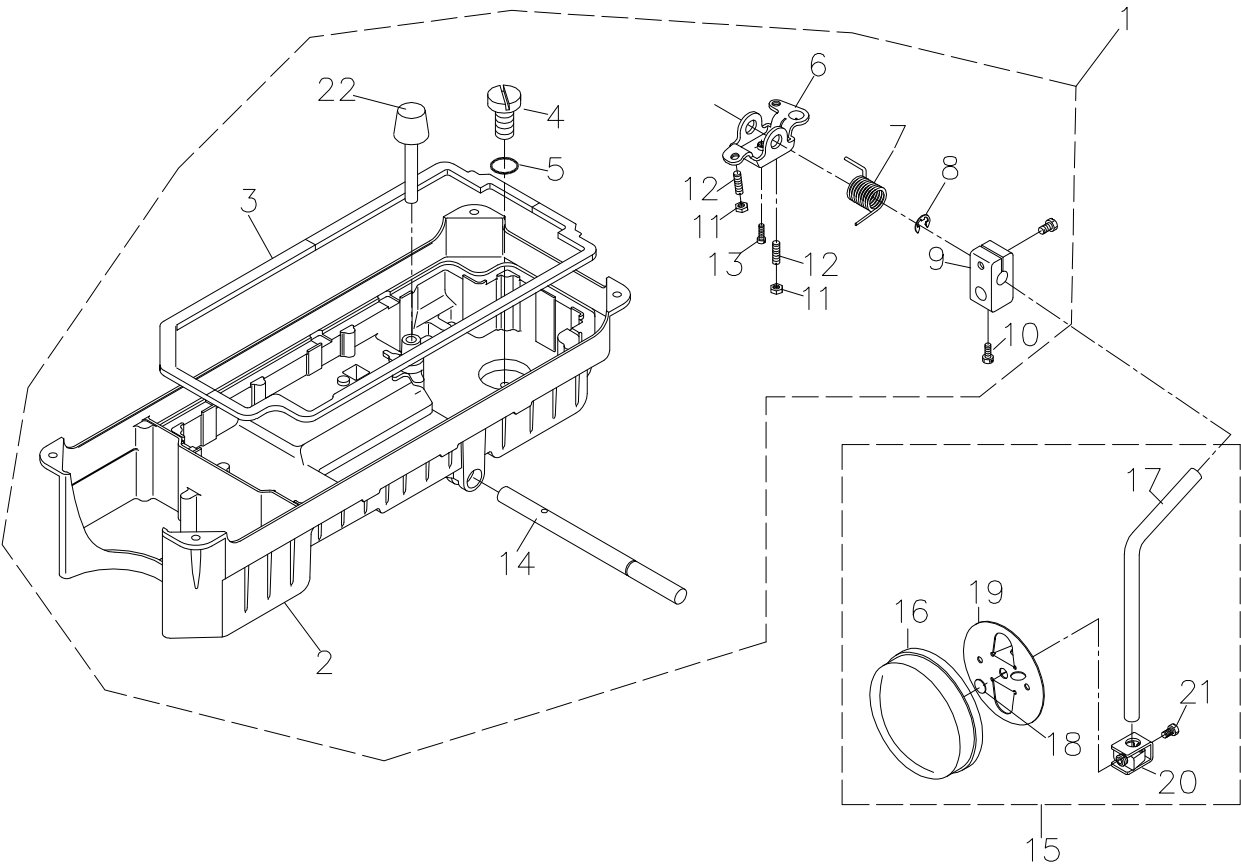
A

B

C

D

E





<b>SIRUBA</b>  PARTS LIST	Series	Parts Group	Subclass Remark	Page
	DL7210	11		1 / 1
				Date
				2023/11/14

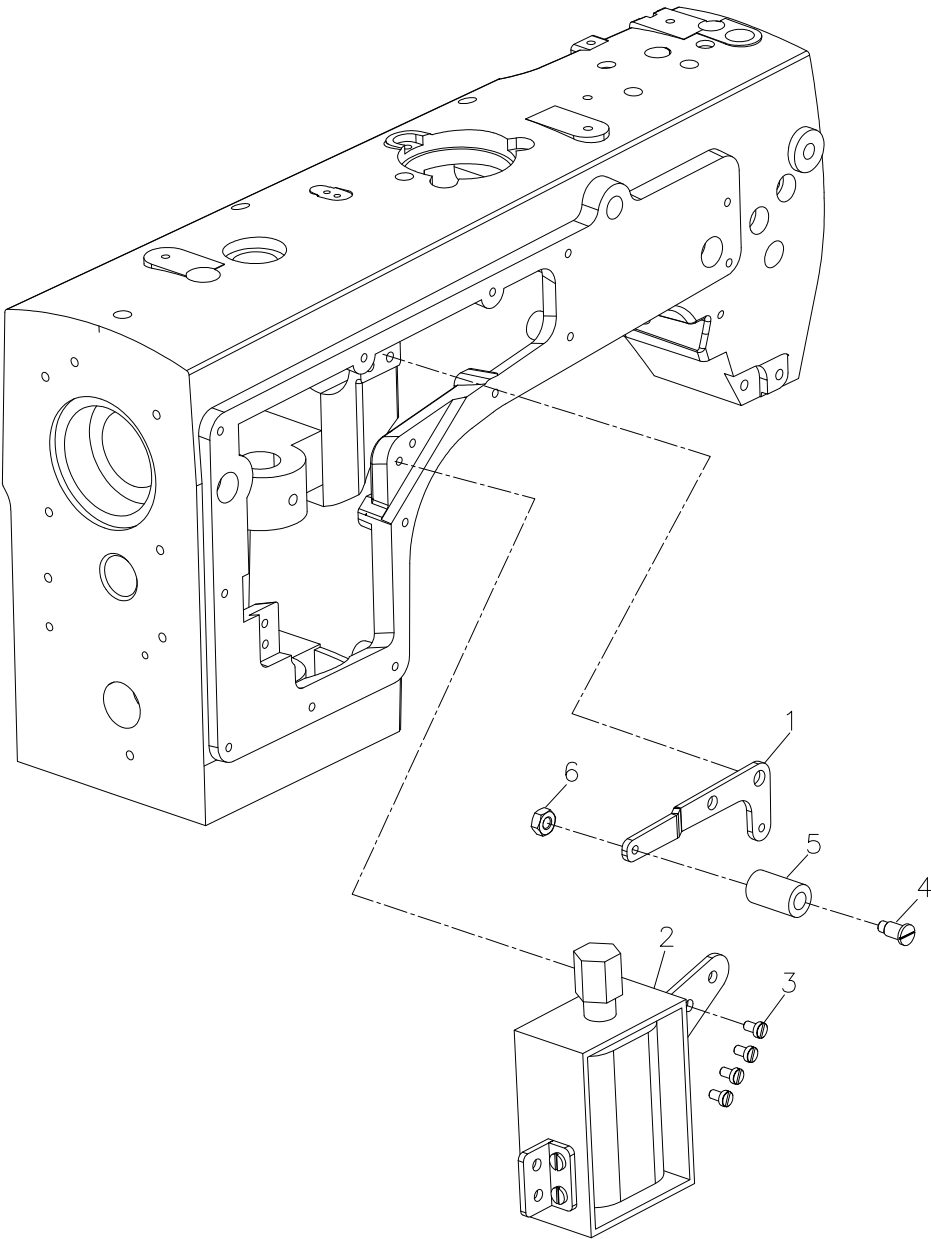
A

B

C

D

E





<div> <div>SIRUBA</div> <div>PARTS LIST</div> </div>	Series	Parts Group	Subclass Remark	Page
	DL7210	12		1 / 1
				Date
				2023/11/14

A

B

C

D

E





SiRUBA  PARTS LIST	Series	Parts Group	Subclass Remark	Page
	DL7210	13		1 / 1
				Date
				2023/11/14
<div><p>11 12 13</p><p>10</p><p>14 説明書 9</p><p>1 2 3</p><p>4 5 6</p><p>7 8</p><p>15 16 17 18 電源線</p></div>				
1	2	3	4	5

SIRUBA  SEQUENCE LIST		Series	Parts Group	Subclass Remark	Page	
		DL7210	13		1 / 1	
					Date	
					2023/11/14	
序號	新編號	名 稱	Name of parts	數量 (Qty)		
Ref.No.	new part No.	Part name		BM1	BH1	
A	1	機頭連接鉤元件	Machine hinge plate asm.	2	2	
	2	機頭連接鉤座釘	Nail	4	4	
	3	機頭連接鉤座	Machine hinge plate	2	2	
	4	螺絲刀（大）	Screw driver,large	1	1	
	5	螺絲刀（中）	Screw driver.mendum	1	1	
	6	螺絲刀（小）	Screw driver.small	1	1	
B	7	梭心	Bobbin	2	2	
	8	機頭罩	Machine head cover	1	1	
	9	機頭支柱	Machine head holder	1	1	
	10	油箱部件	Oil reservoir asm.	1	1	
	11	機針 DBx1 #14	Needle DBx1 #14	2	2	
	12	防震墊 (A)	quakeproof washer A	2	2	
	13	防震墊 (B)	quakeproof washer B	2	2	
	14	說明書	Instruction book	1	1	
	15	控速器	Speed controller	1	1	
	16	控速器安裝螺釘	Speed controller screw	5	5	
	17	控速器拉杆	Speed controller pull rod	1	1	
	18	電源線	Power cable	1	1	
C						
D						
E						

1

2

3

4

5



高林股份有限公司  
KAULIN MFG. CO., LTD.

由於對產品的改良及更新，本產品零件圖及外觀的修改恕不事先通知！  
The specification and/or appearances of the equipment described in this parts list are  
subject to change because of modification which will without previous notice.  
BYL-13S53.NOV.2023