

SIRUBA

零件圖

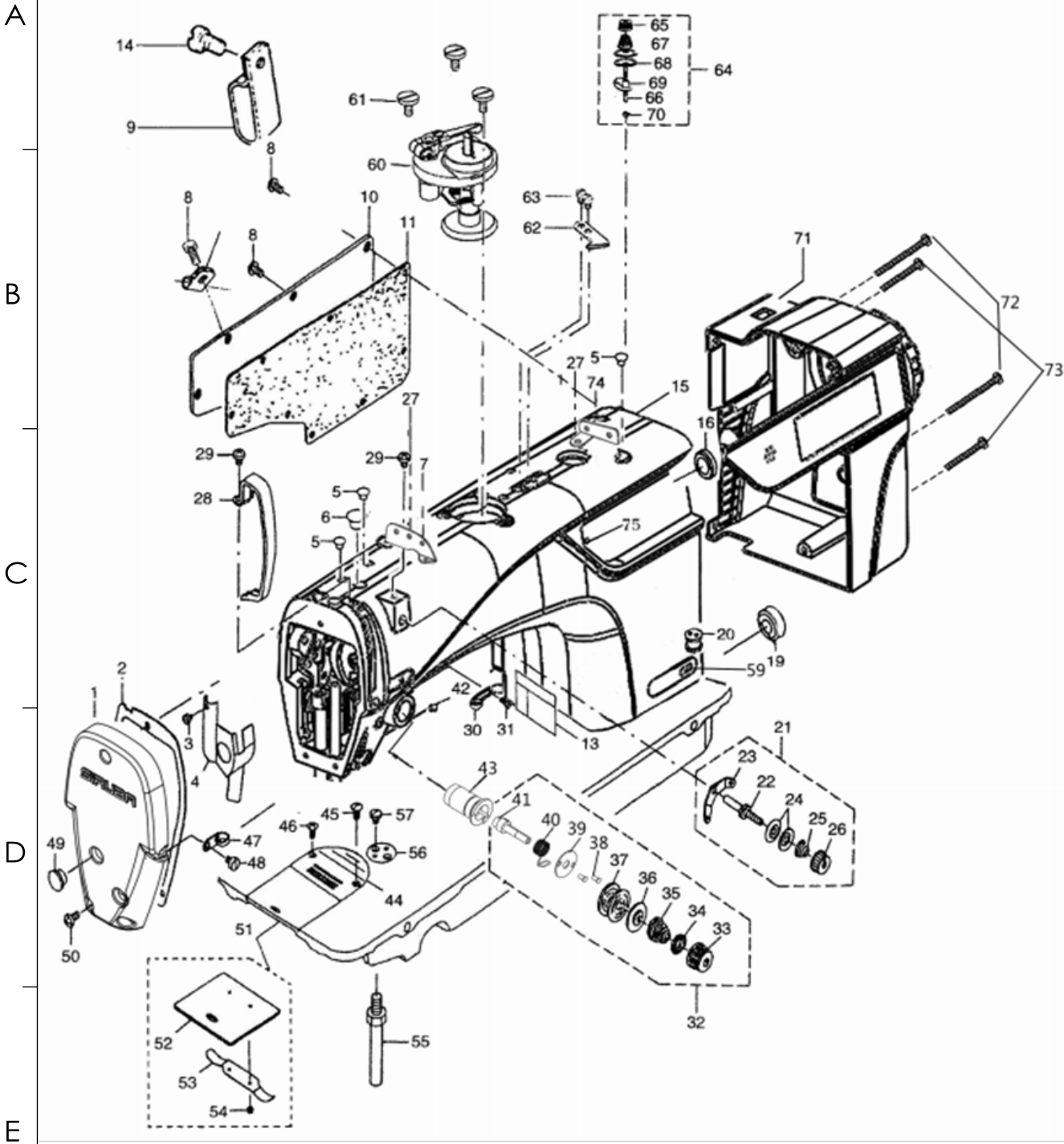
PARTS LIST

DL7200H



SiRUBA SEQUENCE LIST		Series	Parts Group	Subclass Remark	Page
		DL7200H	01		1 / 2
					Date
					2023/11/20
參照號	零件圖號	零件名稱	NAME OF PARTS	數量	備註
A	1	G20-1-1	面板	Face plate	1
	2	GR9890-02	面板墊	Face plate agsket	1
	3	GS44	防油板螺釘	Screw 1/8x44 L=4	1
	4	GR3403	面板防油板部件	Arm oil shifld asm.	1
	5	GR3344	挑線連杆銷螺孔塞	Rubber plug	3
	6	GR1463	針杆曲柄螺孔塞	Rubber plug	1
	7	GR9890-42	三孔過線	Three holes thread guide plate	1
	8	GS053	後窗板螺釘	Screw 3/16x28 L=9	7
	9	GR1083-8	導線夾板	Cord holder	1
	10	GK9890-03	後窗板	Side plate	1
B	11	GR9890-04	後窗板墊	Gasket	1
	12				
	13	GQ196	安全指示牌	Safety label	1
	14	GS053-8	後窗板螺釘	Screw 3/16x28 L=14	3
	15		機殼	Machine cover	1
	16	GR3345	送料調節器孔塞	Rubber plug	1
	17				
	18				
	19	GR1464	下軸盲孔塞	Rubber plug	1
	20	GR1005-8	導線過線套	Magnet cord rubber	1
C	21	GR9890-29	調線夾線器組件	Thread tension asm.	1
	22	GR7650	調線夾線螺釘	Thread tension post	1
	23	GR7673	調線過線板	Thread tension guide	1
	24	GR1015-8	小夾線板	Thread tension disk	2
	25	GW233-8	小夾線簧	Thread tension spring	1
	26	GS1750	小夾線螺母	Thread tension nut	1
	27	GS551	小夾線器組件螺釘	Screw 11/61 x 40 L=6	1
	28	GK240	挑線杆防護罩	Thread take-up lever cover	1
	29	GS551	挑線杆護罩螺釘	Screw 3/16x28 L=6	3
	30	GR3354	右線鉤	Arm thread guide Right	1
D	31	GS0552	右線鉤螺釘	Screw 11/64x40 L=6	1
	32		夾線器組件	Thread tension asm.	1
	33	GL0113	夾線螺母	Tension nut	1
	34	GR1490	夾線制動板	Rotating stopper	1
	35	GW251	夾線簧	Tension spring	1
	36	GR1489	夾線板	Thread tension disk presser	1
	37	GR1488	夾線板	Thread tension disk	2
	38	G20-1-38	松線夾線器螺釘	Screw	2
	39	G20-1-39	松線夾線器墊片	Gasket	1
	40	G20-1-40	挑線簧	Spring	1
E	41	G20-1-41	夾線螺釘	Screw	1
	42	GS48	夾線器螺釘	Screw 15/64x28 L=7	1
	43	G20-1-43	電磁鐵組件	Electromagnet asm.	1
	44	GM202	針板	Throat plate	1
	45	GS044	針板螺釘	Screw 11/64x40 L=6	1
	46	GS044	針板螺釘	Screw 11/64x40 L=6	1
	47	GR3355	左線鉤	Arm thread guide Left	1
	48	GS0551	左線鉤螺釘	Screw 11/64x40 L=6	1
	49	GR1458	面板調節螺孔塞	Ribber plug	2
	50	GS053	面板螺釘	Screw 3/16x28 L=9	3
	51	GM340/4	推板部件	Slide plate asm.	1
	52	GM204	推板	Slide plate	1
	53	GW434	推板簧	Bed slide spring	1
	54	GS045	推板簧螺釘	Screw 3/32x56 L=2.2	2
	55	GS0548	底板支柱	Bed screw stud	4

SIRUBA PARTS LIST	Series	Parts Group	Subclass Remark	Page
	DL7200H	01		2 / 2
				Date
				2023/11/20



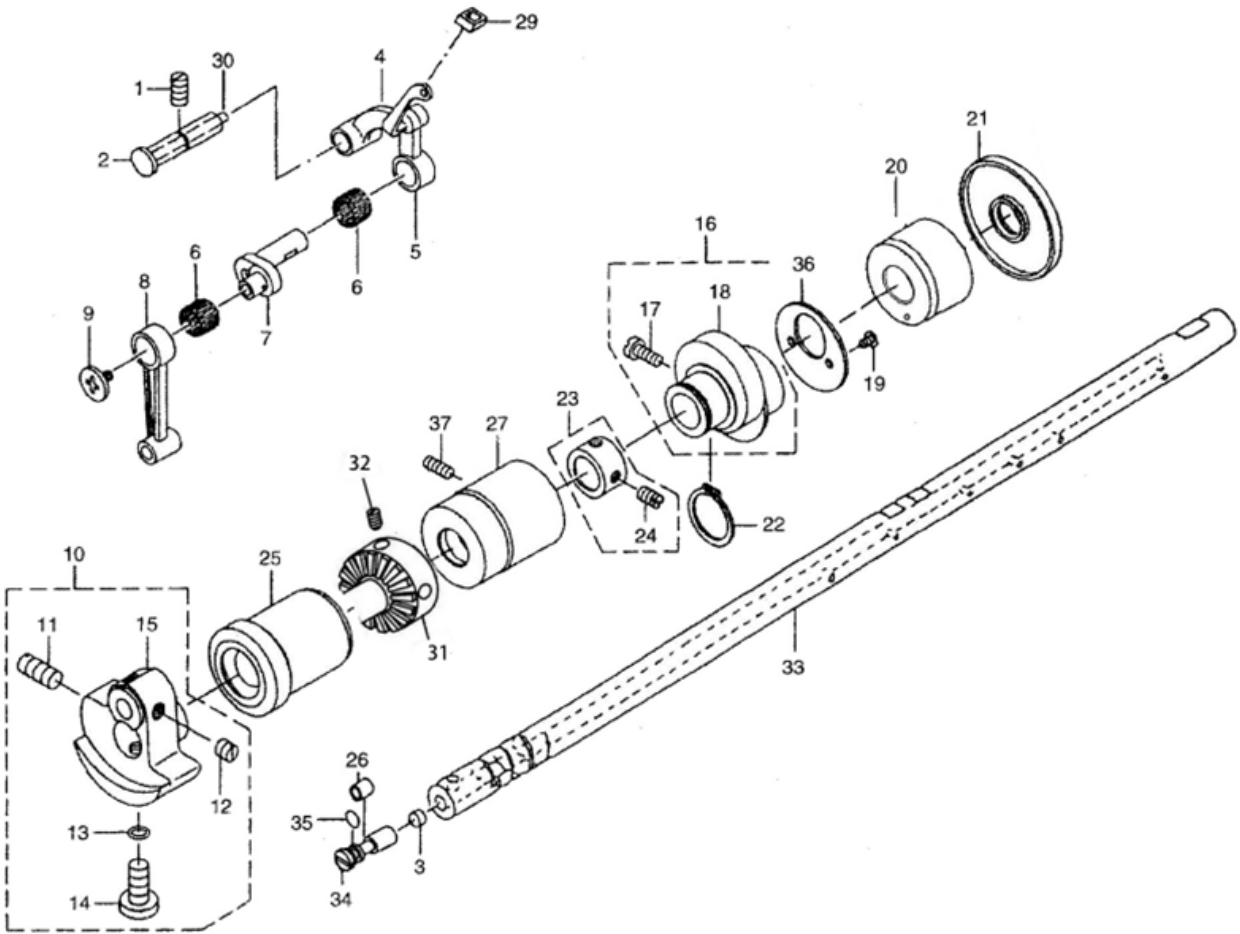
SiRUBA SEQUENCE LIST		Series	Parts Group	Subclass Remark		Page
		DL7200H	01			2 / 2
						Date
						2023/11/20
56	GR724	夾邊器	Ruler stopper	1		
57	GS373	夾邊器螺釘	Screw 11/64x40 L=6	2		
58						
59	G20-1-59	型號牌	Model plate	1		
60	GR9890-40	繞線器組件	Bobbin base	1		
61	GS9890-41	繞線器螺釘	Screw	3		
62	GR9890-26	割線刀	Knife	1		
63	GS226	繞線器割線刀螺釘	Knife screw	2		
64	GR9890-38	夾線器組件	Thread tension asm.	1		
65	GR9890-38-1	夾線螺母	Tension nut	1		
66	GR9890-38-2	夾線螺釘	Tension post	1		
67	GR9890-38-3	夾線彈簧	Tension spring	1		
68	GR9890-38-4	夾線板	Thread tension disk presser	2		
69	GR9890-38-5	過線板	Thread tension guide	1		
70	GR9890-38-6	夾線螺母（下）	Tension nut	1		
71	G20-1-71	電機罩殼	Motor cover	1		
72	G20-1-72	電機罩緊固螺釘	Screw	2		
73	G20-1-73	電機罩緊固螺釘	Screw	2		
74	GR9890-35	過線導線器	Thread guide plate	1		
75	G20-1-75	卡扣	Snap joint	1		

SIRUBA PARTS LIST	Series	Parts Group	Subclass Remark	Page
	DL7200H	02		1 / 1
				Date
				2023/11/20

A

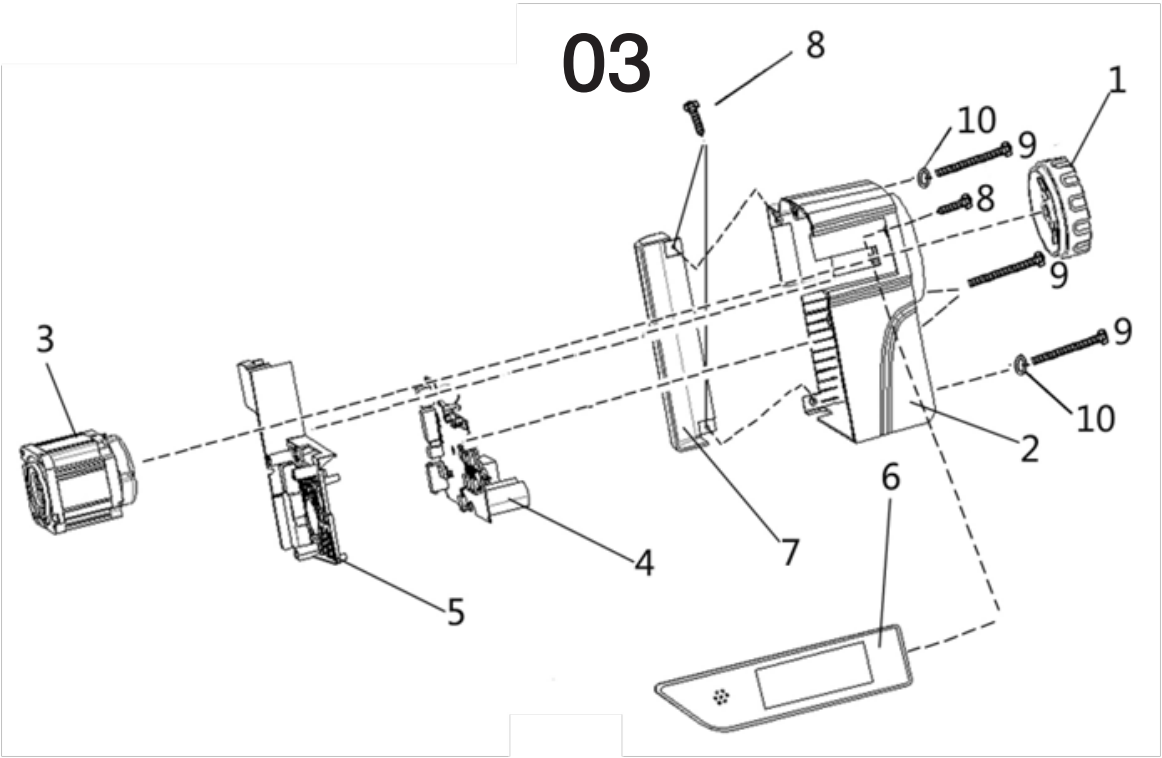
B

C



D

E



SiRUBA SEQUENCE LIST	Series		Parts Group	Subclass Remark	Page
	DL7200H		02		1 / 1
					Date
					2023/11/20
參照號	零件圖號	零件名稱	NAME OF PARTS	數量	備註
1	GS04	挑線連杆銷螺釘	Screw 15/64x28 L=10,5	1	
2	GX566	挑線連杆銷	Thread take-up crank shaft	1	
3	GR1470	曲柄油量限制氈	Roller felt	1	
4	GH564/4	挑線連杆	Thread take-up lever	1	
5	GH564/6	挑線連杆分組件	Thread take-up lever asm.	1	
6	GO270	挑線杆滾針軸承	Needle bearing	2	
7	GH402/2	挑線曲柄部件	Needle bar crank	1	
8	GH334	針杆連杆	Needle bar crank rod	1	
9	GS09	挑線曲柄左旋螺釘	Left screw 9/64x40 L=4.8	1	
10	GH561-8	針杆曲柄組件	Counter weight asm.	1	
11	GD0550	針杆曲柄緊固螺釘	Screw 9/32x28 L=16	1	
12	GD39	挑線曲柄定位螺釘	Screw 1/4x40 L=6	2	
13	GR1472	定位螺釘 O 型圈	Rubber ring	1	
14	GD06	針杆曲柄定位螺釘	Screw 9/32x28 L=15.5	1	
15	GH9890-65	針杆曲柄	Counter weight	1	
16		送料偏心輪組件	Feed drive eccentric cam asm.	1	
17	GD034	送料偏心輪螺釘	Screw 1/4x40 L=11	2	
18	GT198	送料偏心輪	Feed drive eccentric cam	1	
19	GD011	送料偏心輪蓋板螺釘	Screw 9/64x40 L=6	2	
20	GO462	上軸軸套	Needle bearing	1	
21	GR3346	上軸油封	Oil seal	1	
22	GR1535	抬牙連杆軸擋圈	Snap ring	1	
23	GR1469	上軸擋圈組件	Thrust collar asm.	1	
24	GS39	上軸擋圈螺釘	Screw 1/4x40 L=6	2	
25	G09890-06	上軸前軸套	Main shaft front bushing asm.	1	
26	GO296	曲柄油量調節銷膠套	Oil adjusting collar	1	
27	G09890-07	上軸中軸套	Bushing, intermediate	1	
29	GR9890-22	橡皮套	Rubber	1	
30	GR3350	挑線連杆銷毛氈	Thread take-up crank shaft felt	1	
31	G20-2-31	驅動輪	Driving wheel	1	
32	G20-2-32	驅動輪緊固螺釘	Screw	2	
33		上軸	Main shaft	1	
34		上軸油量調節銷	Oil amount adjusting pin	1	
35		上軸油量調節銷。型圈	Rubber ring	1	
36		送料偏心輪蓋板	Thrust collar	1	
03					
參照號	零件圖號	零件名稱	NAME OF PARTS	數量	備註
1	G20-3-1	手輪	Hand wheel	1	
2		皮帶罩	Belt cover	1	
3	G20-3-3	電機	Motor asm	1	
4		PCB1		1	
5		PCB2		1	
6	G20-3-6	操作面板	Operation panel	1	
7	G20-3-7	電控電線罩		1	
8	G20-3-8	自攻螺釘	Tapping screw	1	
9	G20-3-9	內六角螺釘	Soket head cap screw M5 L=35	4	
10	G20-3-10	墊片	ring	2	

SIRUBA PARTS LIST	Series	Parts Group	Subclass Remark	Page
	DL7200H	04		1 / 1
				Date
				2023/11/20

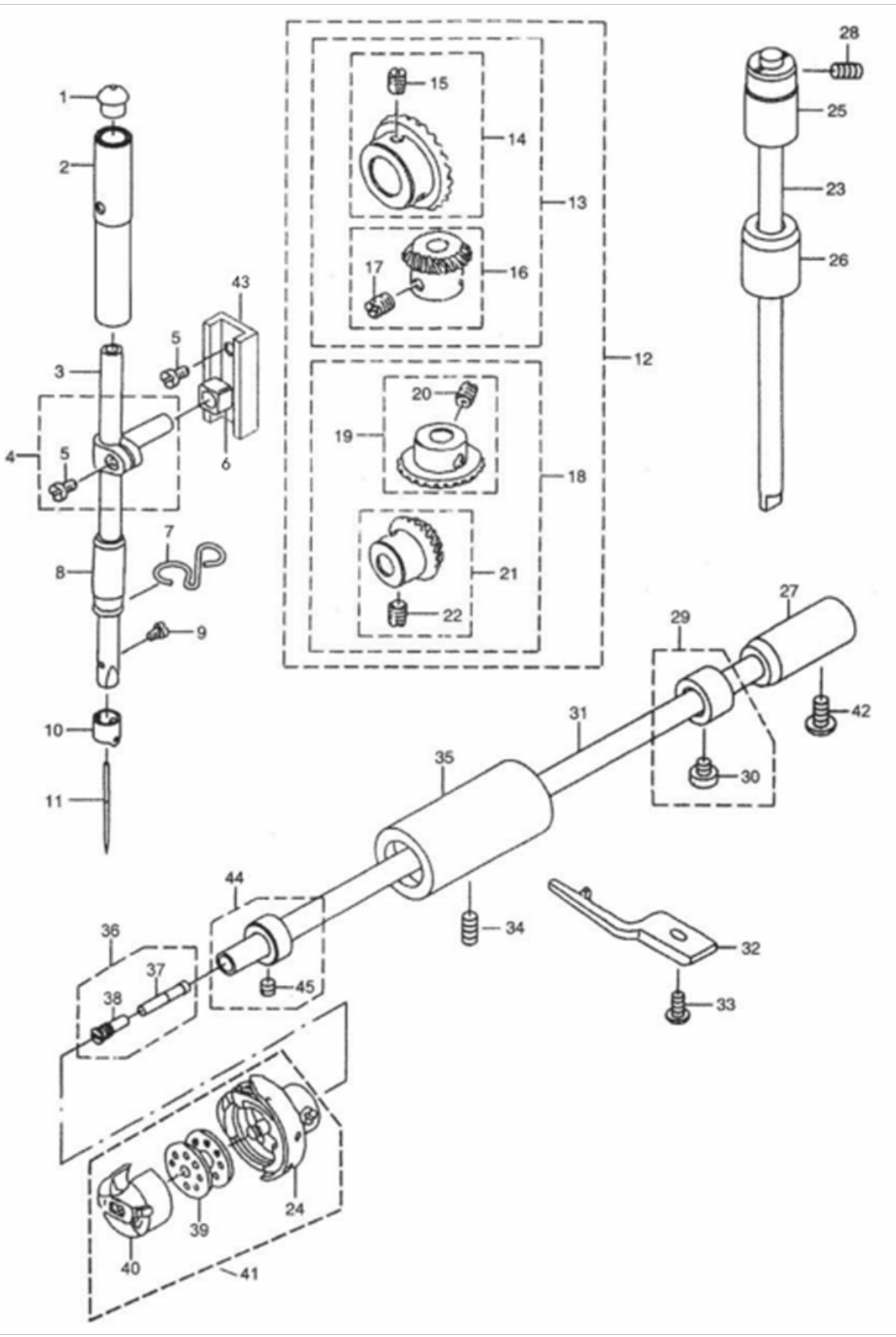
A

B

C

D

E



SiRUBA SEQUENCE LIST	Series		Parts Group	Subclass Remark		Page
	DL7200H		04			1 / 1
						Date
						2023/11/20
參照號	零件圖號	零件名稱	NAME OF PARTS	數量	備註	
A	1	GR1479	針杆上孔塞	Cap	1	
	2	GO9890-17	針杆上套	Needle bar bushing upper	1	
	3	GZ9890-16	針杆	Needle bar	1	
	4	GR1478	針杆連接柱元件	Needle rod holder asm.	1	
	5	GS011	針杆連接柱螺釘	Screw 9/64x40 L=7.5	3	
	6	GU168	針杆連接柱滑塊	Slide block	1	
	7	GR9890-18	針杆下套線鉤	Needle bar thread guide	1	
	8	GO272	針杆下套	Needle bar bushing, lower	1	
	9	GS071	機針螺釘	Screw 1/8x44 L=4.8	1	
	10	GR3352	針杆線鉤	Needle bar thread guide	1	
B	11	GV15	機針	Needle DBX1 #14	1	
	12		傘齒輪組件	Gear & pinion asm.	1	
	13		上齒輪組件	Gear & pinion asm., upper	1	
	14	GC168	上軸傘齒輪組件	Gear asm.	1	
	15	GS033	傘齒輪螺釘	Screw 1/4x40 L=8	2	
	16	GC167	豎軸上傘齒輪組件	Pinion asm.	1	
	17	GS033	傘齒輪螺釘	Screw 1/4x40 L=8	2	
	18		下齒輪組件	Gear&pinion asm., lower	1	
	19	GC166	豎軸下齒輪組件	Gear asm.	1	
	20	GS033	傘齒輪螺釘	Screw 1/4x40 L=8	2	
C	21	GC165	下軸傘齒輪組件	Pinion asm.	1	
	22	GS033	傘齒輪螺釘	Screw 1/4x40 L=8	2	
	23	GZ435	豎軸	Upright shaft	1	
	24	GN161	旋梭	Hook asm.	1	
	25	GO472	豎軸上軸套	Upright shaft bushing, upper	1	
	26	GO471	豎軸下軸套	Upright shaft bushing, lower	1	
	27	GO470	下軸後軸套	Bushing rear	1	
	28	GS053	豎軸上套緊固螺釘	Screw 3/16x28 L=7	1	
	29	GR1519-8	下軸擋圈組件	Thrust collar asm.	1	
	30	GS082-8	下軸擋圈螺釘	Screw 11/64x40 L=5	2	
D	31	GZ434-8	下軸	Lower shaft	1	
	32	GR3371	旋梭定位鉤	Bobbin case holder	1	
	33	GS030-8	旋梭定位鉤螺釘	Screw 11/64x40 L=9.5	1	
	34	GS0559	下軸前軸套螺釘	Screw 3/16x28 L=7	1	
	35	GO1002	下軸前軸套	Lower shaft front metal	1	
	36		下軸限油組件	Oil seal screw asm.	1	
	37	GR1515	下軸限油芯	Oil wick	1	
	38	GS031	下軸限油螺釘	Oil seal screw	1	
	39	GN163	梭心	Bobbin	1	
	40	GN162	梭殼	Bobbin case	1	
E	41	GN161	旋梭梭殼組件	Hook bobbin case asm.	1	
	42	GO053	下軸後軸套螺釘	Screw 3/16x28 L=13	1	
	43	GR0341	針杆連接柱滑塊座	Slide block base	1	
	44	GR3372-7	下軸擋油圈組件	Lower shaft oil deflector asm	1	
	45	GS210	擋油圈螺釘	Oil deflector screw 11/64 x 40 L=3.5	2	

SIRUBA PARTS LIST	Series	Parts Group	Subclass Remark	Page
	DL7200H	05		1 / 1
				Date
				2023/11/20

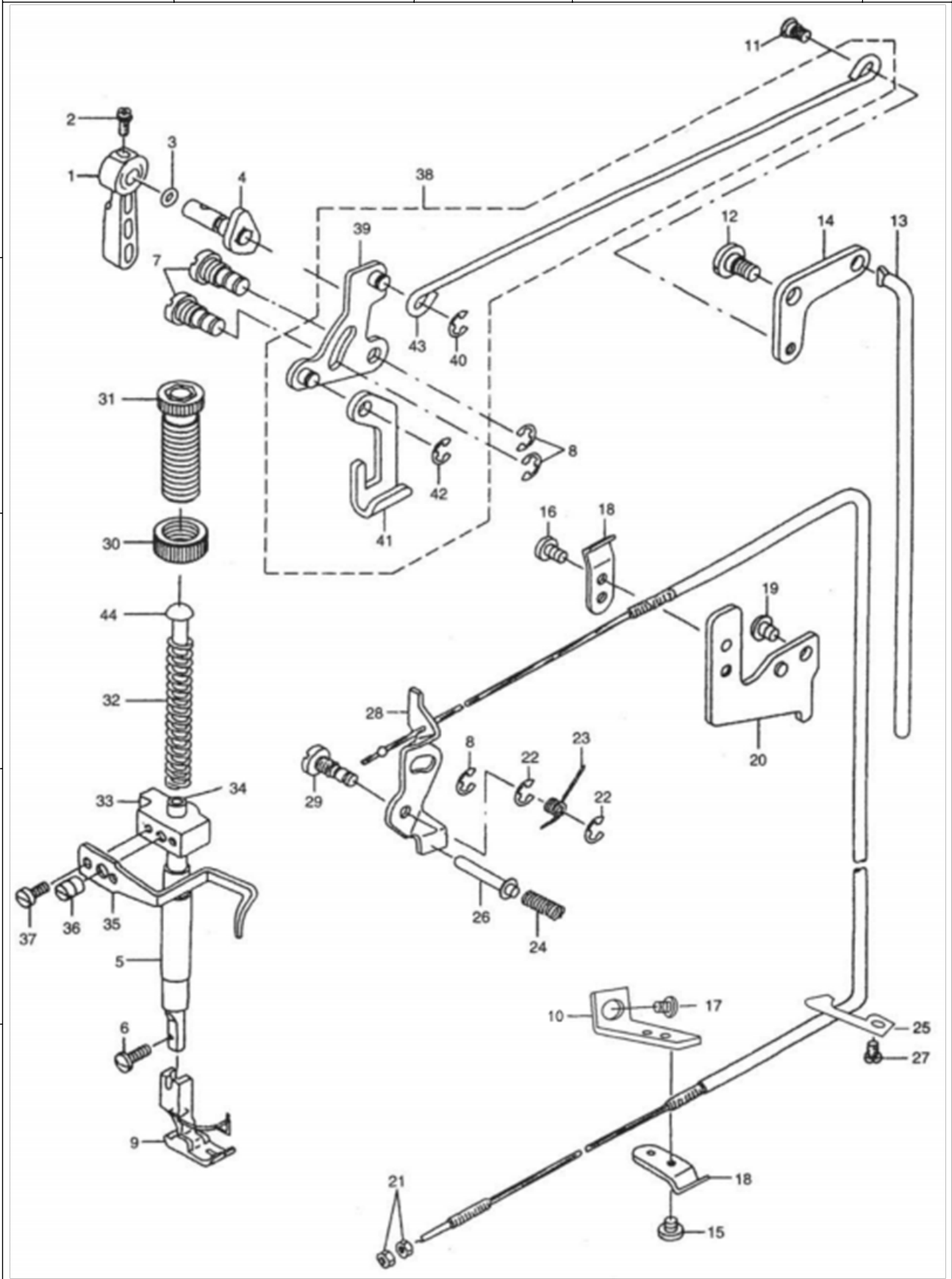
A

B

C

D

E



SiRUBA SEQUENCE LIST	Series		Parts Group	Subclass Remark	Page
	DL7200H		05		1 / 1
					Date
					2023/11/20
參照號	零件圖號	零件名稱	NAME OF PARTS	數量	備註
A	1	GR3360	壓腳扳手	Hand lifter	1
	2	GS0554	壓腳扳手螺釘	Screw 9/64x40 L=10	1
	3	GR1503	壓腳扳手軸 O 型圈	Rubber ring	1
	4	GR336/2	壓腳扳手凸輪部件	Hand lifter cam asm.	1
	5	GO273	壓杆軸套	Presser bar bushing lower	1
	6	GS020	活壓腳螺釘	Screw 9/64x40 L=8	1
	7	GS0555	前杠杆螺紋銷	Link shaft	2
	8	GR1510	螺紋銷開口擋圈	E-ring 5	3
	9	GM200/5	活壓腳部件	Presser foot asm.	1
	10		下壓線底板	Wire holder bracket, lower	1
B	11	GS0558	抬壓腳拉杆螺釘	Hinge screw	1
	12	GS0557	後杠杆軸拉螺釘	Hinge screw	1
	13	GR3370	抬壓腳頂杆	Knee lifter connecting rod	1
	14	GR3369	抬壓腳後杠杆	Lifting lever link	1
	15	GS010	下壓板緊固螺釘	Screw 11/64x40 L=5	1
	16	GS336-8	上壓板緊固螺釘	Screw 11/64x40 L=5	1
	17		下壓板組件緊固螺釘	Screw 15/64x28 L=14.5	1
	18	GR1017-8	拉線活壓板	Wire holder	2
	19	GS310-8	上壓板組件緊固螺釘	Screw 3/16x28 L=6	1
	20	GR1016-8	上壓線底板	Wire holder bracket, upper	1
C	21	GL6	拉線鈕距調節螺母	Nut 3/16x32	2
	22	GR1510	螺紋銷開口擋圈	E-ring 5	2
	23	GW433	松線頂板復位簧	Tension release return spring	1
	24	GW432	松線輔釘彈簧	Thread release pin spring	1
	25		軟管右擋板	Wire cable holder	1
	26	GX568	松線輔釘	Tension release supporting pin	1
	27		右擋板緊固螺釘	Screw 3/16x28 L=6	1
	28	GR9890-50	松線頂板	Thread tension release wire	1
	29	GS0556	松線頂板螺紋銷	Tension release shaft	1
	30	GL0114	調壓螺母	Presser adjusting screw nut	1
D	31	GS0553-8	調壓螺釘	Presser spring regulator	1
	32	GW253	調壓簧	Presser adjusting spring	1
	33	GR3358-8	壓杆導架	Presser bar guide bracket	1
	34	GZ275	壓杆	Presser bar	1
	35	GR9890-56	緩線調節鉤	Presser bar thread guide	1
	36	GS033	壓杆導架螺釘	Screw 1/4x40 L=8	1
	37	GS0100	緩線調節鉤螺釘	Screw 9/64x40 L=8	2
	38		前杠杆組件	Knee lifting cross rod asm	1
	39	GR3364/3	抬壓腳前杠杆部件	Hand lifter link	1
	40	GR1510	拉杆開口擋圈	E-ring 5	1
E	41	GR3363	壓腳升降板	Lifting lever	1
	42	GR3366	升降板連接開口擋圈	E-ring 5	1
	43	GR3368	抬壓腳拉杆	Knee lifting cross rod	1
	44	GR1494	調壓導杆	Presser guide bar	1

SIRUBA PARTS LIST	Series	Parts Group	Subclass Remark	Page
	DL7200H	06		1 / 1
				Date
				2023/11/20

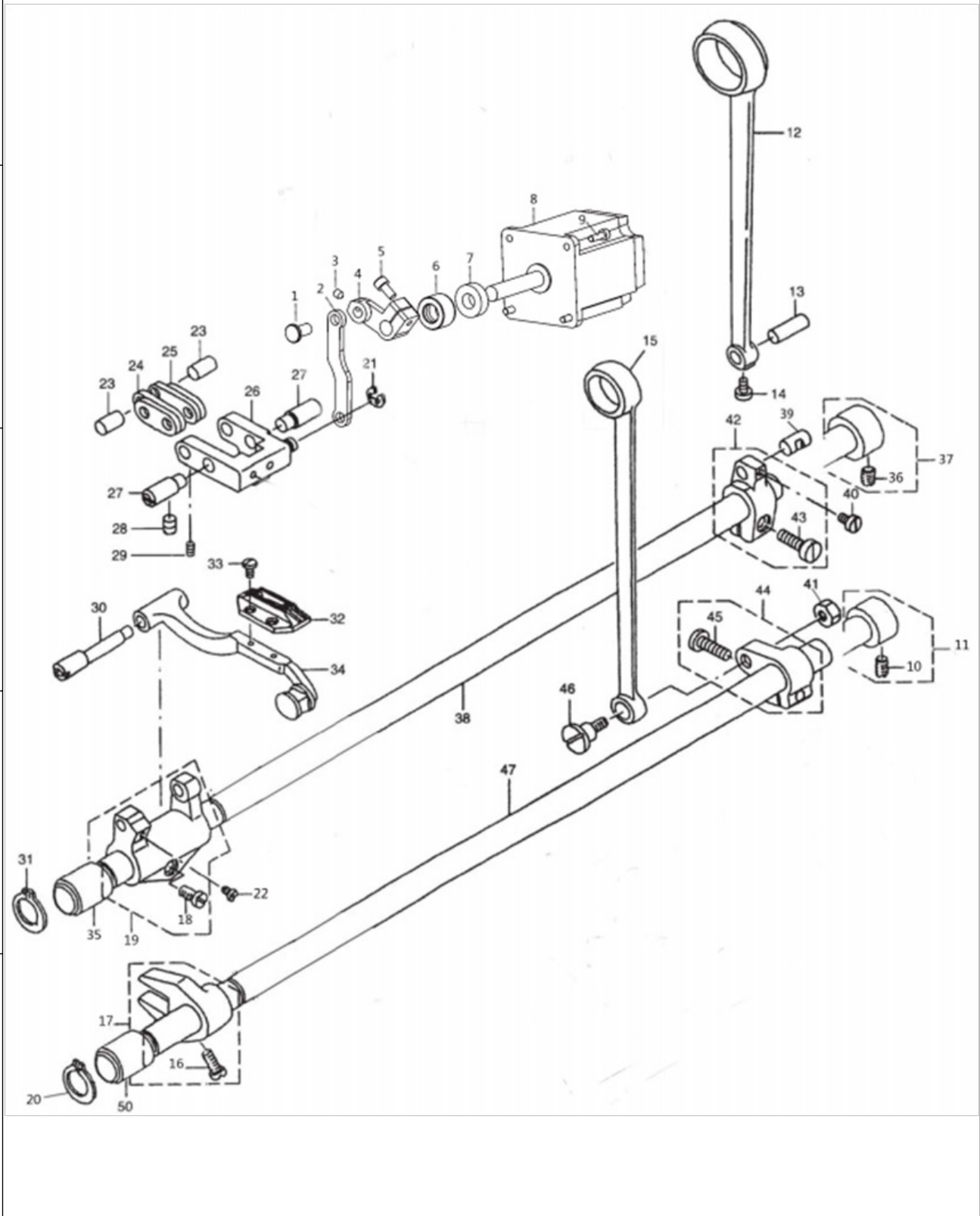
A

B

C

D

E



SiRUBA SEQUENCE LIST	Series		Parts Group	Subclass Remark	Page
	DL7200H		06		1 / 1
					Date
					2023/11/20
參照號	零件圖號	零件名稱	NAME OF PARTS	數量	備註
A	1	G18E-080110	單步進連杆銷	Single step connecting rod pin	1
	2	G18E-080120	單步進連杆	Single step linkage	1
	3	G18E-M5X6	單步進連杆螺釘	Single step coupling screw	1
	4	G18E-080100	單步進倒縫曲柄	Single step reverse slotted crank	1
	5	G18E-M5X16	倒順縫曲柄螺釘	Reverse slotted crank screw	1
	6	G18E-010130	倒送料軸軸套	Reverse feed shaft sleeve	1
	7	G18E-010140	倒送料軸油封	Inverted feed shaft oil seal	1
	8	G18E-30101350	倒送料步進電機	Reverse feed stepper motor	1
	9	G18E-M5X16	步進電機螺釘	Step motor screw	4
	10	GS39	抬牙軸擋圈螺釘	Screw 1/4x40 L=6	1
B	11	GR1469	抬牙軸擋圈	Thrust collar asm.	1
	12	GH568	送料連杆	Rocker shaft connecting rod	1
	13	GX570	送料連杆銷	Walking foot long pin	1
	14	GSO560	送料連杆螺釘	Screw 9/64x40 L=4	1
	15	GH572	抬牙連杆	Connecting rod	1
	16	GS037	抬牙叉曲柄螺釘	Retaining ring	1
	17	GH570	抬牙叉曲柄組件	Feed bar crank asm.	1
	18	GS69	牙架座螺釘	Screw 3/16x28 L= 14	1
	19	GR3379-8	牙架座組件	Driving shaft crank asm.	1
	20	GR1524	抬牙軸軸用擋圈	Screw 11/64x40 L=10.5	1
C	21	GR1510	倒送料連杆擋圈	E-ring 5	1
	22	GS092	牙架銷螺釘	Screw 11/64x40 L=7	2
	23	GX571	短擺動板連接銷	Walking foot short pin	2
	24	GR3374	送料長擺動板	Connecting link long pin	2
	25	GR3775	送料短擺動板	Connecting link short pin	2
	26	GR3376/2-8	送料擺動板座組件	Feed adjust link asm.	1
	27	GX573	送料擺動板座左右銷	Adjusting link fulcrum shaft	2
	28	GS48	左右銷螺釘	Screw 15/64x28 L=7	2
	29	GSO560	連杆銷螺釘	Screw 9/64x40 L=4	2
	30	GX575	牙架銷	Feed bar shaft	1
D	31	GR1524	送料軸軸用擋圈	Retaining ring	1
	32	GM201	送料牙	Feed dog I	1
	33	GS072	送料牙螺釘	Screw 1/8x44 L=6	2
	34	GR3380/5-8	牙架部件	Feed bar asm.	1
	35	GR1469	送料軸前軸套	Feed rocker shaft bushing	2
	36	GS39	送料軸擋圈螺釘	Screw 1/4x40 L=6	1
	37	GO473	抬牙軸擋圈組件	Thrust collar asm.	1
	38	GZ436	送料軸	Feed rocker shaft	1
	39	GX571	送料曲柄銷	Walking foot middle pin	1
	40	GSO560	曲柄銷螺釘	Screw 9/64x40 L=6	1
E	41	GL7	抬牙連杆軸位螺母	Nut 9/32x28	1
	42	GH569	送料曲柄組件	Feed rocker shall crank asm.	1
	43	GS0561	送料曲柄螺釘	Screw 3/16x28 L=15.5	1
	44	GH571	抬牙後曲柄組件	Lining rocker asm.	1
	45	GS0561	抬牙後曲柄螺釘	Screw 3/16x28 L=14	1
	46	GSO562	抬牙連杆軸位螺釘	Hinge screw	1
	47	GZ437	抬牙軸	Feed driving shaft	1

SIRUBA PARTS LIST	Series	Parts Group	Subclass Remark	Page
	DL7200H	07		1 / 1
				Date
				2023/11/20

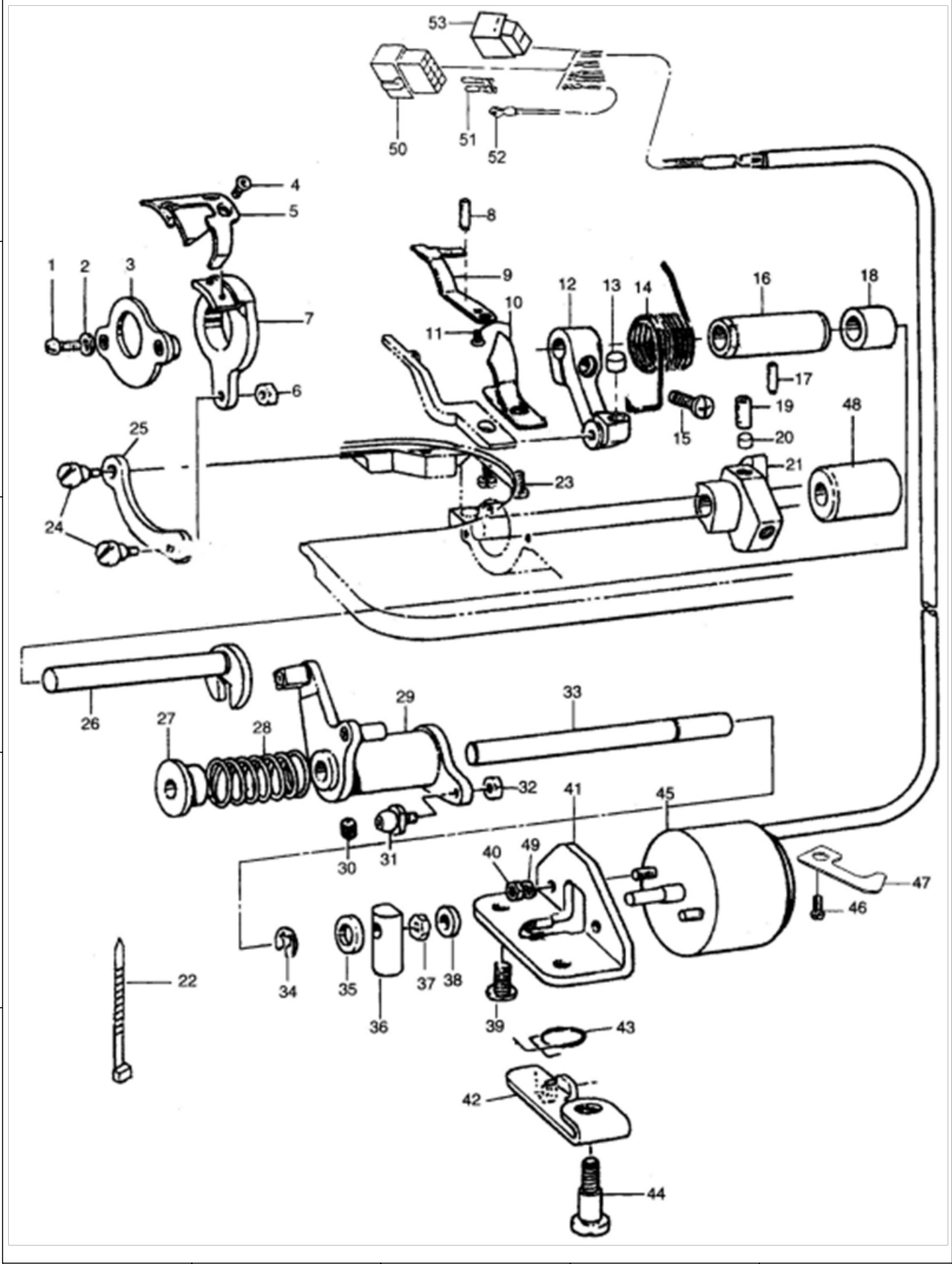
A

B

C

D

E



SiRUBA SEQUENCE LIST		Series	Parts Group	Subclass Remark	Page
		DL7200H	07		1 / 1
					Date
					2023/11/20
參照號	零件圖號	零件名稱	NAME OF PARTS	數量	備註
A	1	GS832	螺釘 SMII/64"x40 L=12	Screw SMI 1/64x40 L=12	2
	2	GR7662	牙架座螺釘墊圈	Washer	2
	3	GR7661	刀架壓板組件	Partiality shank asm.	1
	4	GS175	活動刀固定螺釘	Screw	2
	5	GR7663	活動刀	Motorial knife	1
	6	GL650	螺母 SMII/64"x40	Nut SMI 1/64x40	1
	7	GR7660	剪線刀架	Knife bracket	1
	8	GS9890-27	定刀調節螺釘	Screw	1
	9	GR7656	割線刀	Secant knife	1
	10	GR7658	護針片	Protect needle patch	1
B	11	GS1755	螺釘 SM9/64"x40 L=4	Screw SM9/64x40 L=4	1
	12	GH1001	曲柄	Thread shear rock arm	1
	13	GR7664	驅動曲柄止動塊	Positioning block	1
	14	GW951	彈簧	Spring	1
	15	GS1760	螺釘 SM3/16"x32 L=14	Screw SM3/16x32 L=14	2
	16	G01001	切線軸套	Thread shear cam rock arm assy	1
	17	GS1761	螺釘 SMII/64"x40	Screw SMI 1/64x40	1
	18	G01000	驅動曲柄軸襯套	Short bush	1
	19	GS1754	螺釘 SMI/4"x40L=10	Screw SM 1/4x40 L= 10	1
	20		凸輪頂柱	Pole	2
C	21	GR7656	凸輪	Thread shear cam	1
	22		尼龍紮帶	Bale band	1
	23	GS788	螺釘 SM9/64"x40 L=5	Screw SM9/64x40 L=5	1
	24	GS1759	連杆螺釘 SMII/64"x40L=5.5	Screw SMI 1/64x40 L=5.5	2
	25	GH1000	連杆	Knife shaft connecting rod	1
	26	GZ850	切線凸輪曲柄軸	Thread shear rock arm shaft	1
	27	GR7667	扭簧端蓋	Spring cover	1
	28	GW952	彈簧	Spring	1
	29	GR7665	剪線驅動組件	Thread shear rock arm shaft	1
	30	GS189	螺釘 SMII/64"x40	Screw SM 11 /64x40	1
D	31	G7666	滾柱	Rooll shaft assy	1
	32	GL650	螺母	Nut	1
	33	GZ851	軸	Thread shear shaft	1
	34	GR7669	擋圈	Retaining ring	1
	35	GR7668	電磁鐵緩衝墊	Magnetic plug cushion mat	1
	36	GR7672	切線電磁鐵頂銷	Magnetic plug pin	1
	37	GL652	螺母 SMI/4"x40	Nut SM 1/4x40	1
	38	GR7671	墊圈	Washer	1
	39	GS1763	油泵安裝螺釘	Screw	1
	40	GKL201-8	螺母 M4	Nut M4	2
E	41	GR7670	切線磁鐵支架	Magnetic plug cushion mat	1
	42	GR7677	松線座	Thread loose seat	1
	43	GWS953	彈簧	Spring	1
	44	GS1764	螺釘 SMI/4"x28L=13	Screw SMI/4x28 L=13	1
	45	GQ785	剪線電磁鐵組件	Magnetic plug	1
	46	GR3400-7	螺釘 SM15/64"x28 L=14.5	Screw SMI5/64x28 L=14.5	1
	47	GS525-8	旋梭供油管壓板	Electrical plug breacker washer	1
	48	GO 1003	下軸中套	Bushing,lower shaft	1
	49	GKR202	墊圈 4.5x8x0.5	Washer 4.5x8x0.5	2
	50	GR8800-61	14 孔接線器	14 holes thread connector	1
	51	GR9890-78	接線端子	Connecting terminal	1
	52	GR8800-60	地線接頭	Groundwire terminel	1
	53	GR9890-70	LED 燈接線器	LED light' s wire connector	1

<div>SIRUBA</div> <div>PARTS LIST</div>	Series	Parts Group	Subclass Remark	Page
	DL7200H	08		1 / 1
				Date
				2023/11/20

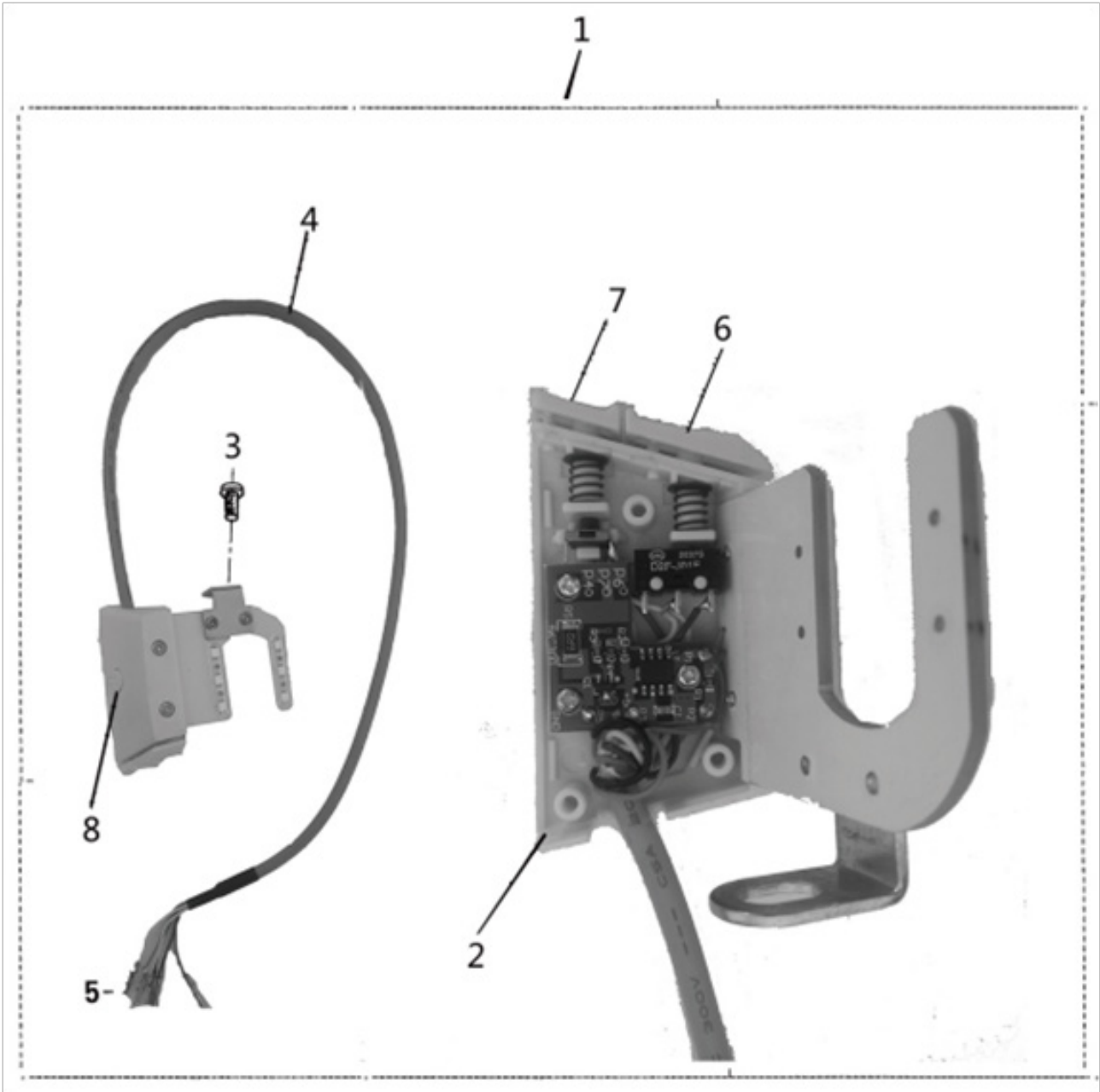
A

B

C

D

E



<div>SIRUBA</div> <div>PARTS LIST</div>	Series	Parts Group	Subclass Remark	Page
	DL7200H	09		1 / 1
				Date
				2023/11/20

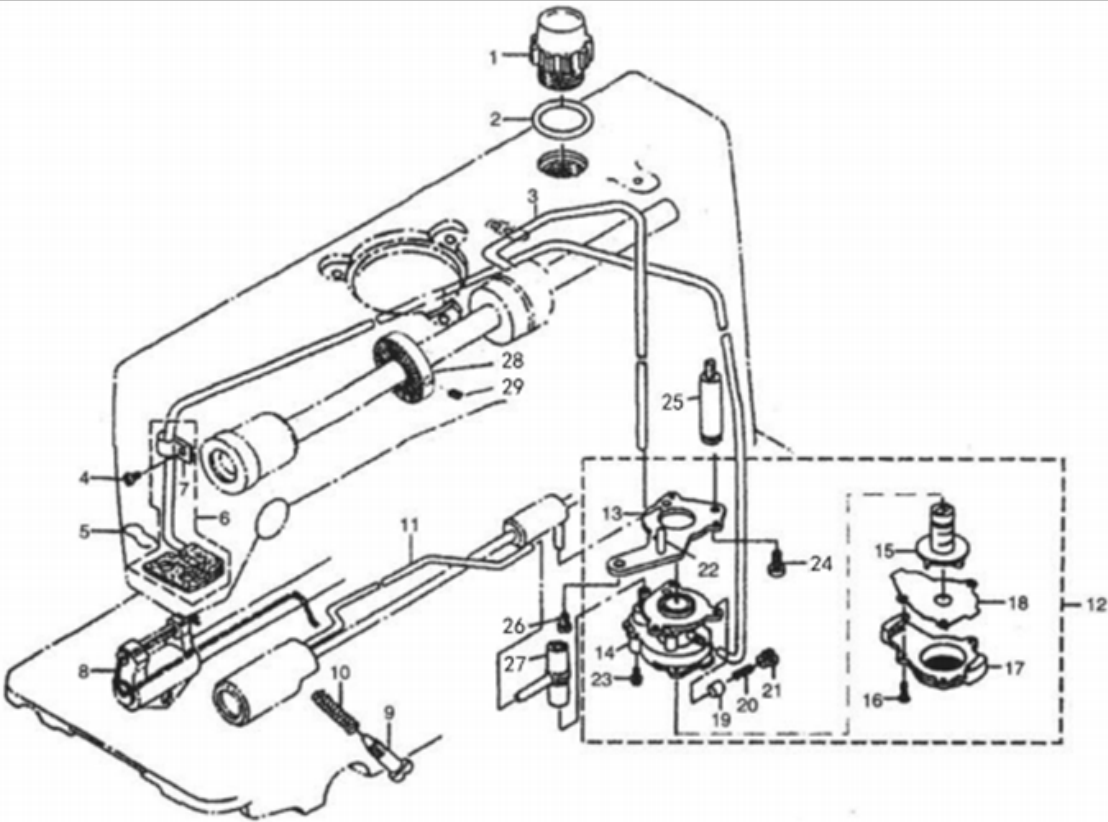
A

B

C

D

E



SiRUBA SEQUENCE LIST		Series	Parts Group	Subclass Remark	Page
		DL7200H	09		1 / 1
					Date
					2023/11/20
參照號	零件圖號	零件名稱	NAME OF PARTS	數量	備註
A	1	GR1561-8	油窗	Oil sight window	1
	2	GR1562	油窗 O 型圈	Rubber ring	1
	3	GR3398	上軸供油管	Main shaft oil tube	1
	4	GR0551	回油管夾螺釘	Screw 3/16x28 L=6	1
	5	GR1569	回油氈夾	Oil felt presser	1
	6	GR3401	回油管組件	Oil return tube asm	1
	7	GR1566	回油管夾	Holder	1
	8	GR3378	送料軸油線	Oil wick	1
	9	GS054-8	旋梭油量調節螺釘	Oil adjusting screw	1
	10	GW259-8	旋梭油量調節簧	Spring	1
B	11	GR3399-8	旋梭供油管	Oil tube	1
	12	GR3389/12	油泵部件	Lubricating oil pump asm	1
	13	GR3390	油泵安裝板	Oil pump installing base	1
	14	GR3391	油泵體	Oil pump	1
	15	GR3392	油泵葉輪	Oil pump impeller	1
	16	GS554	油泵蓋螺釘	Screw D=3 L=10	3
	17	GR3394	油泵蓋	Lubricating oil pump cover	1
	18	GR3393	油泵葉輪托板	Oil pump impeller cover	1
	19	GR3396	回油柱塞	Plunger	1
	20	GW437	柱塞簧	Plunger spring	1
C	21	GS0569	柱塞螺釘	Plunger screw	1
	22	GR3395	下軸供油管	Hook driving shaft oil tube	1
	23	GS0568	油泵安裝螺釘	Screw M3 L=8	3
	24	GS030	螺柱連接螺釘	Screw 11/64x40 L=9.5	1
	25	GS0567-8	油泵連接螺柱	Oil pump support,large	1
	26	GS062	油泵螺釘	Screw 15/64x28 L=12	1
	27	GR3397	供油管接頭	Rubber joint	1
	28	GS9890. 39	繞線器驅動輪	Bobbin pulley	1
	29	GS1761	繞線器驅動輪螺釘	Screw	2
D					
E					

SIRUBA PARTS LIST	Series	Parts Group	Subclass Remark	Page
	DL7200H	10		1 / 1
				Date
				2023/11/20

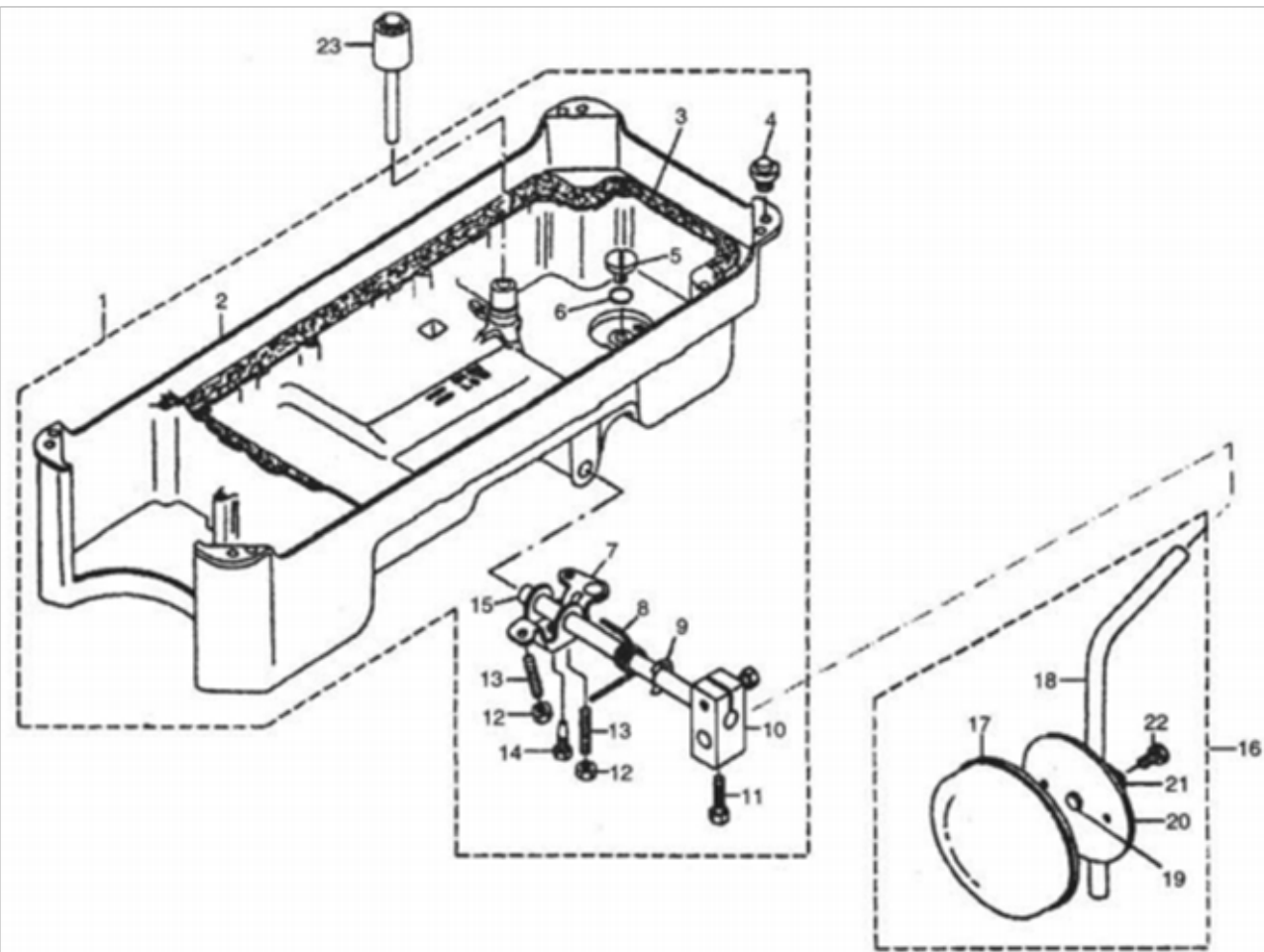
A

B

C

D

E



SIRUBA SEQUENCE LIST		Series	Parts Group	Subclass Remark	Page
		DL7200H	10		1 / 1
					Date
					2023/11/20
參照號	零件圖號	零件名稱	NAME OF PARTS	數量	備註
1	GR3405/17	油盤部件	Oil reservoir asm	1	
2	GR3406	油盤	Oil reservoir	1	
3	GR3407	油盤墊	Oil reservoir gasket	1	
4	GR3408	機頭座墊	Rubber cushion	4	
5	GS0571	排油孔螺釘	Screw 5/16x24 L=7	1	
6	GR3409	排油孔螺釘 O 型圈	Rubber ring	1	
7	GH576	抬壓腳雙向曲柄	Knee lifting rotating arm	1	
8	GW438	雙向曲柄扭簧	Spring	1	
9	GR1583	抬壓腳軸開口擋圈	E-ring 10	1	
10	GR3410	抬壓腳操縱杆節頭	Vertical shaft fitting arm	1	
11	GS0573	操縱杆節頭螺釘	Screw	2	
12	GL21	雙向曲柄限位調節螺母	Nut M6	2	
13	GS057	雙向曲柄限位調節螺釘	Screw M6 L=30	2	
14	GS0572	雙向曲柄螺釘	Screw M6 L=17.5	1	
15	GZ439	抬壓腳軸	Knee press cross shaft	1	
16	GR3411/6	操縱杆部件	Knee pan plate asm	1	
17	GKR13	操縱杆軟墊	Knee pan plate cover	1	
18	GR1586	操縱杆	Knee pan upright shaft	1	
19	GR3413	操縱杆墊	Knee pan plate rubber	1	
20	GR3412	操縱板	Knee pan plate	1	
21	GR3414	操縱杆節頭	Knee pan plate support	1	
22	GS584	節頭螺釘	Screw M6 L=12	1	
23	GH579	抬壓腳頂銷	Knee lifter push rod	1	

<div>SIRUBA</div> <div>PARTS LIST</div>	Series	Parts Group	Subclass Remark	Page
	DL7200H	11		1 / 1
				Date
				2023/11/20

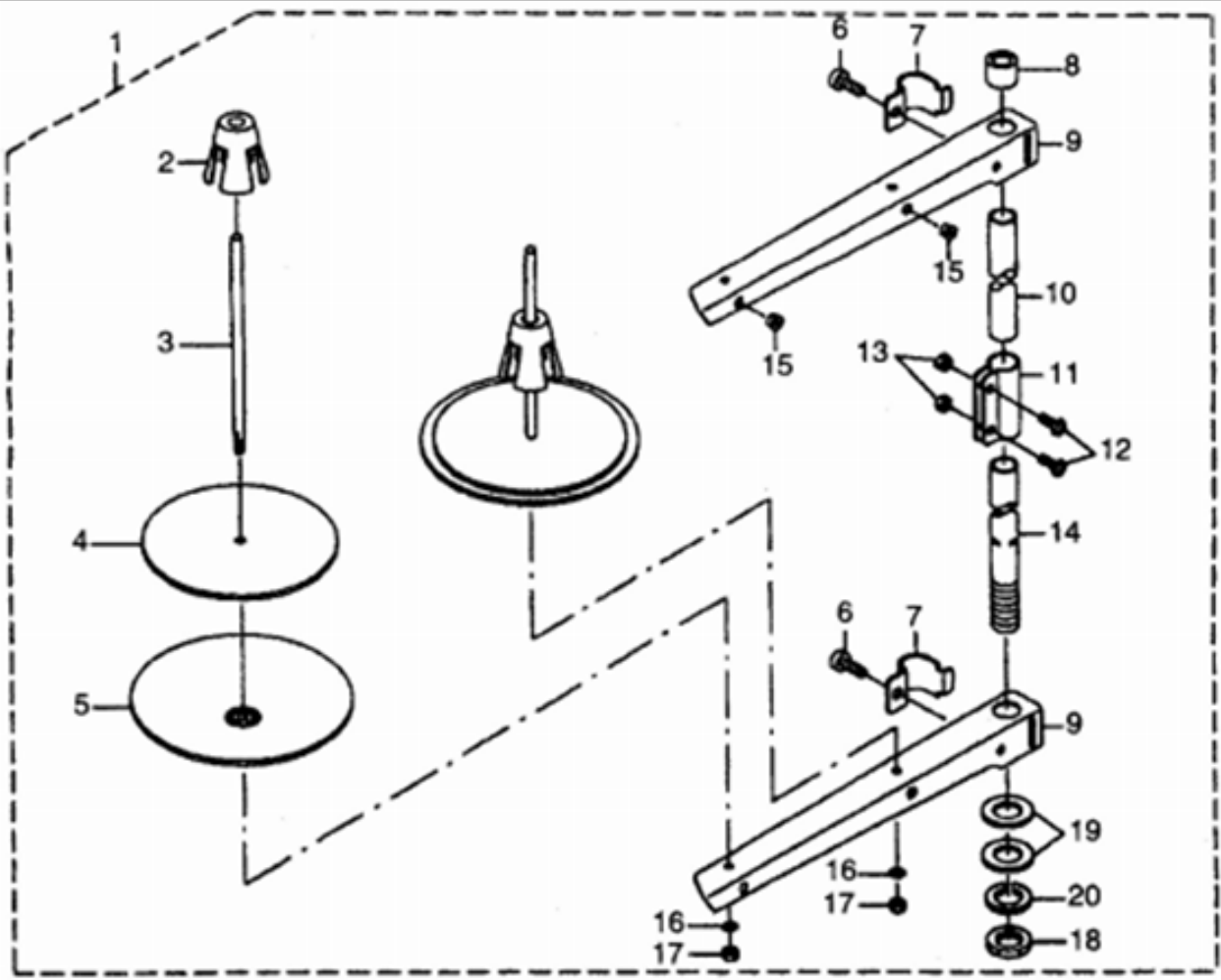
A

B

C

D

E



SIRUBA PARTS LIST	Series	Parts Group	Subclass Remark	Page
	DL7200H	12		1 / 1
				Date
				2023/11/20

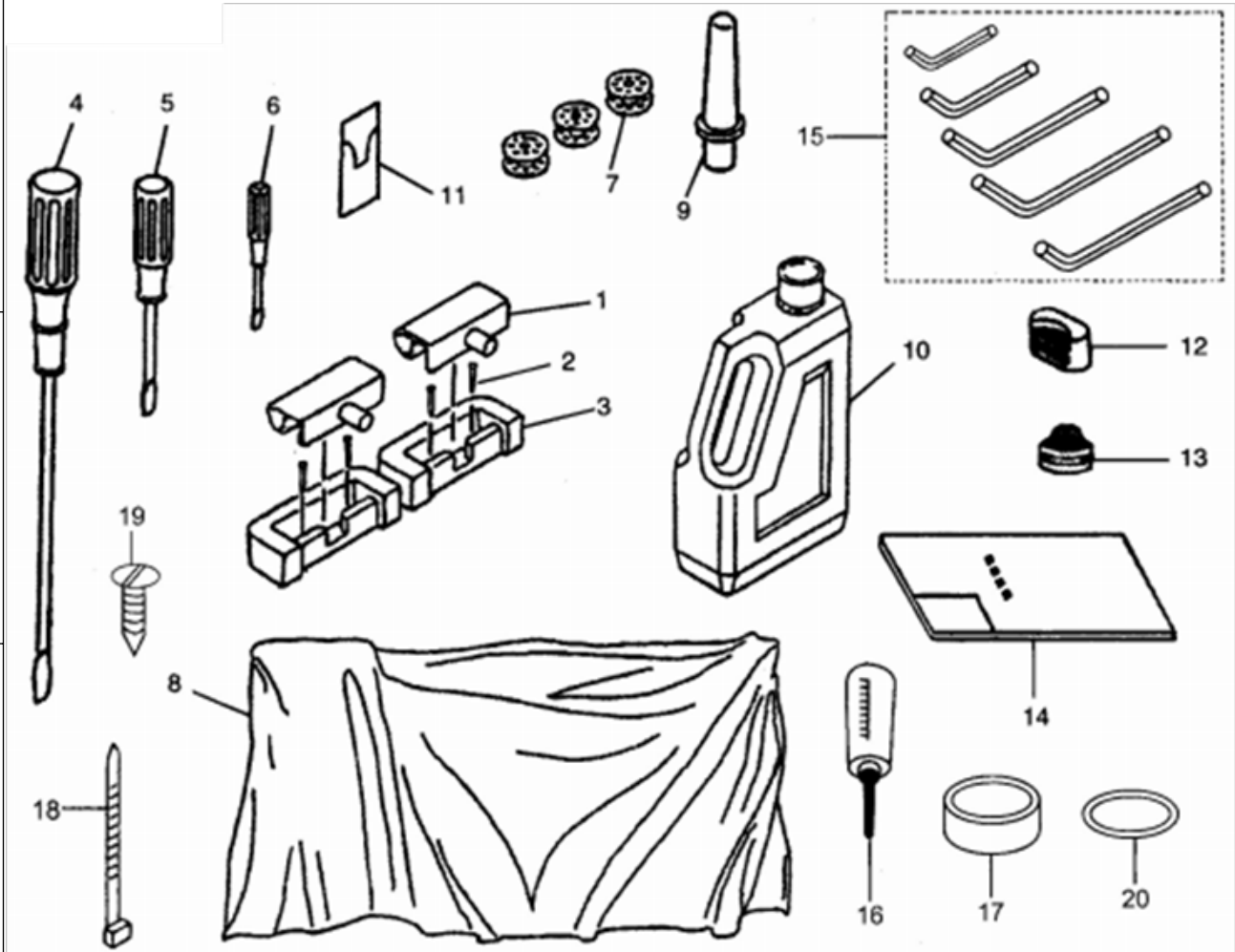
A

B

C

D

E



SIRUBA SEQUENCE LIST	Series		Parts Group	Subclass Remark		Page
	DL7200H		12			1 / 1
						Date
						2023/11/20
參照號	零件圖號	零件名稱	NAME OF PARTS	數量	備註	
1	GR1590/2	機頭連接鉤元件	Machine hinge plate asm.	2		
2	GK241	機頭連接鉤座釘	Nail	4		
2	GBX105	機頭連接鉤座	Machine hinge plate	2		
2	GR1610	螺絲刀（大）	Screw driver, large	1		
2	GR1602	螺絲刀（中）	Screw driver, mendium	1		
2	GR1603	螺絲刀（小）	Screw driver, small	1		
2	GN163-8	梭心	Bobbin	3		
1	GF424	機頭罩	Macgube head cover	1		
2	GBR148	機頭支柱	Macgube rest cover	1		
1	GR1604/3	油箱部件	Oil reservoir asm.	1		
1	GV15	機針	Needle DB x 1 #14-#16	1 包	1 package	
2	GR1578-8	防震墊（A）	Quakeproof washer A	1		
2	GR1579-8	防震墊（B）	Quakeproof washer B	1		
1		說明書	Instruction book	1		
2		內六角扳手 (1.5,2,2.5,3,4)	Cross screw driver (1.5,2,2.5,3,4)	各 1	1 each	
2		小油壺	Oiler asm	1		
2	GR1576	油盤磁鐵	Oil reservoir magnet	1		
1		尼龍紮帶	Cable band	5		
2	GBR147	木螺釘	Wood screw	4		
1	GS0574	墊圈	Washer	4		

SIRUBA PARTS LIST	Series	Parts Group	Subclass Remark	Page
	DL7200H	13		1 / 1
				Date
				2023/11/20

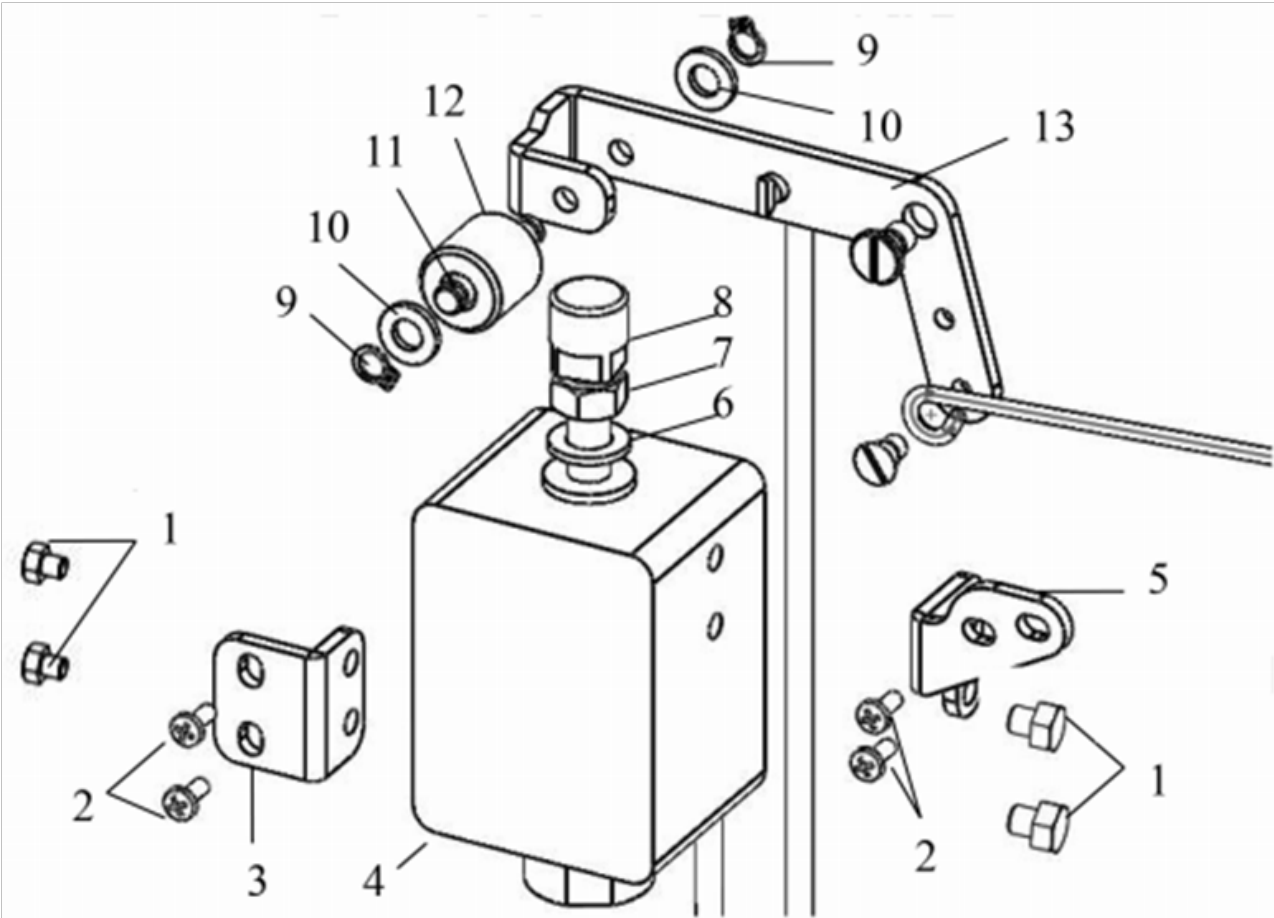
A

B

C

D

E





高林股份有限公司
KAULIN MFG. CO., LTD.

由於對產品的改良及更新，本產品零件圖及外觀的修改恕不事先通知！

The specification and/or appearances of the equipment described in this parts list are subject to change because of modification which will without previous notice.

HBL-13W03.NOV.2023