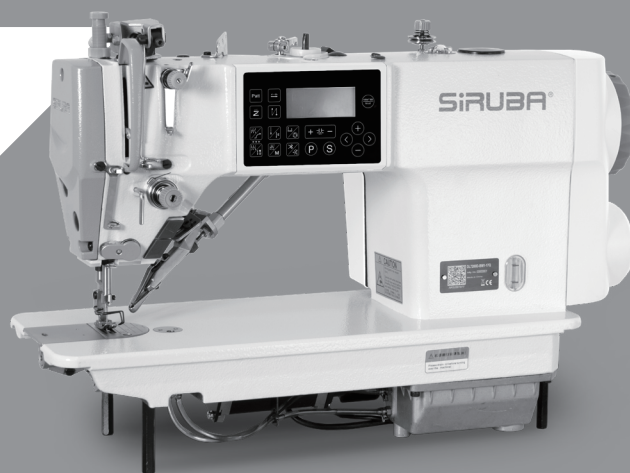


# SIRUBA

零件圖

PARTS LIST

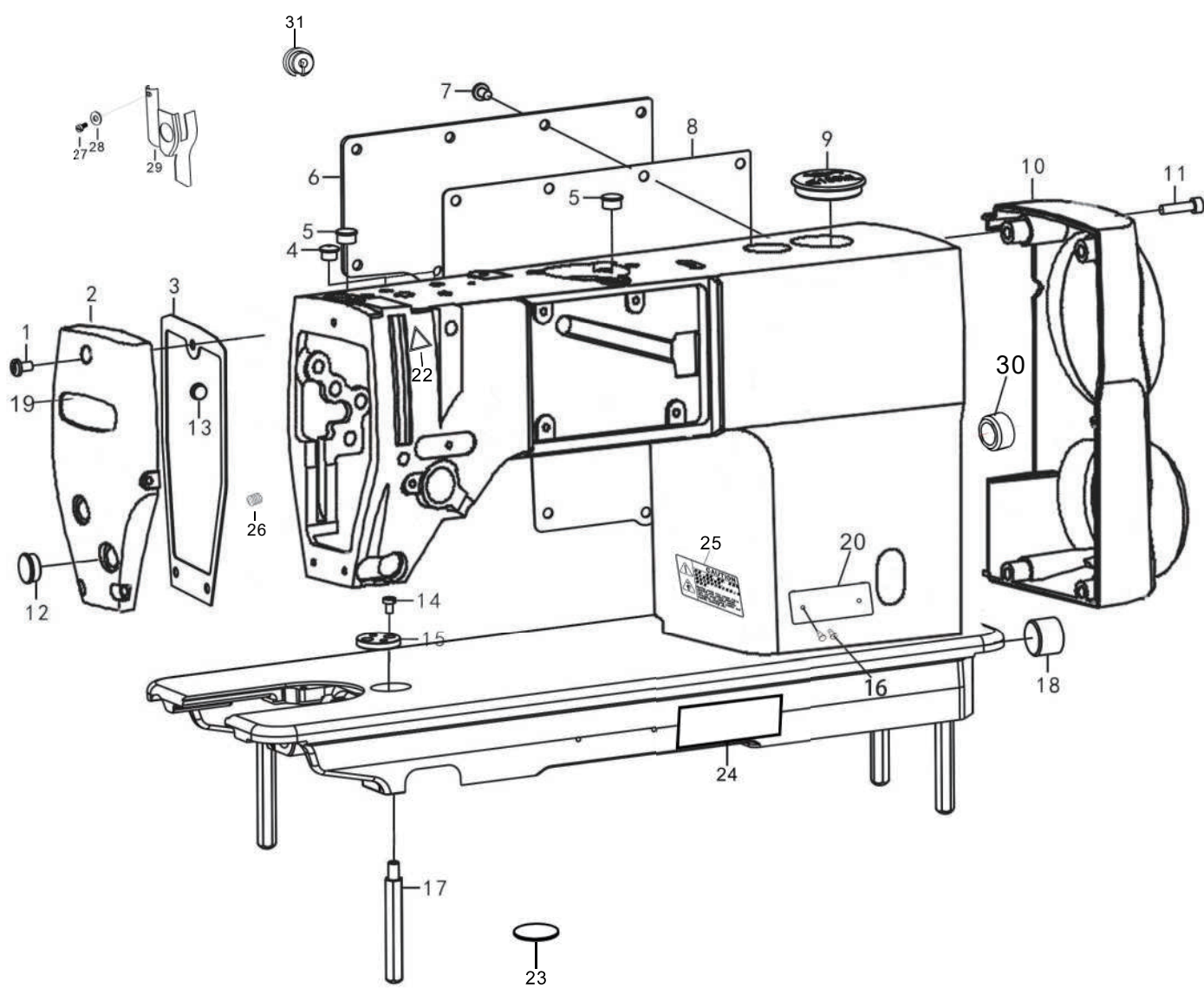
DL7200D



CE

索引	INDEX	頁 /PAGE
機體部分	Machine body	1
針桿和挑線桿裝置	Needle bar and thread take-up mechanism	3
壓腳裝置	Presser foot mechanism	7
送料裝置	Feed mechanism components	9
旋梭裝置	Hook components	13
供油潤滑裝置	Lubrication	15
穿線裝置	Threading mechanism	17
切線裝置	Thread trimmer mechanism	19
倒縫開關裝置	Quick reverse switch mechanism	21
控制箱裝置和操作盒	Control box device and operation box	21
附件	Accessories	23
桌板圖	TABLE CUT-OUT	25

# 1. 機體部分 Machine body

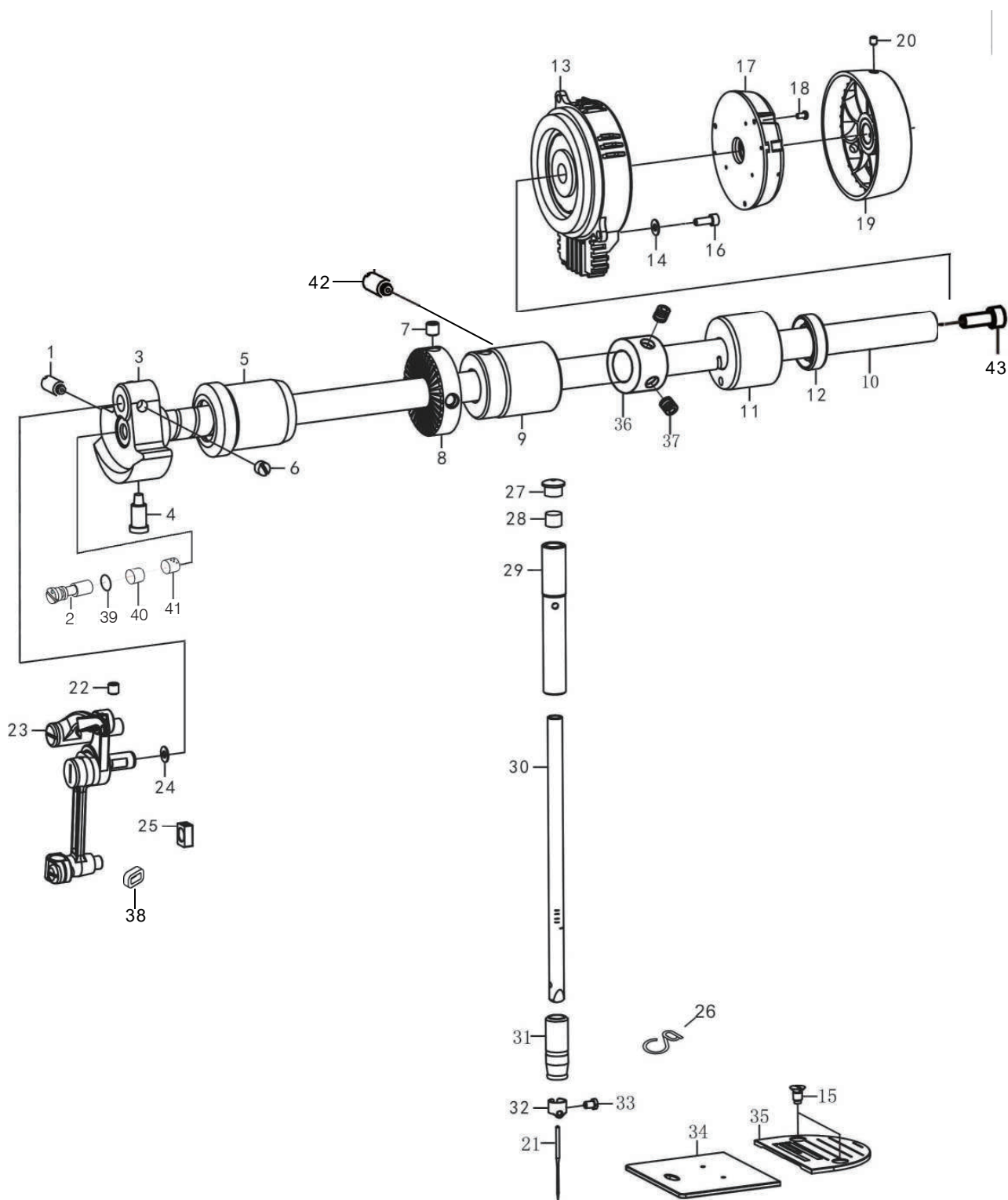


# BYL-

序号	物料编码 (BYL-xxx)	用量	零件名称	NAME OF PARTS
1	S094762809	3	螺钉	SCREW
2	288C01001	1	面板	FACE PLATE
3	288C01002	1	面板垫	GASKET
4	991001005	2	橡皮塞8.5	RUBBER CAP 8.5
5	991001006	2	橡皮塞12.2	RUBBER CAP 12.2
6	288001006	1	后窗板	SIDE PLATE
7	S094762809	9	螺钉	SCREW
8	288001008	1	后窗板衬垫	GASKET
9	380012201	1	橡皮塞 37.8	RUBBER CAP 37.8
10	288C01010U	1	电机罩	MOTOR COVER
11	M180500820	4	螺钉 M5×20	SCREW M5×20
12	991001033	5	橡皮塞12.8	RUBBER CAP 15.5
13	280001065	1	电子松线器过线橡胶塞	RUBBER CAP
14	S074374006Z	1	螺钉 SM4. 37X40-6	SCREW SM4. 37X40-6
15	280001037	1	卷边器座	EDGE WINDING DEVICE
16	991001039	2	铆钉	RIVET
17	280001036	4	底板支柱	BED SCREW STUD
18	288001018	1	下轴盲孔塞	RUBBER CAP 21
19	280001011	1	商标牌	BUSINESS SIGN
20	288C01020	1	型号牌	MODEL CARD
21	288001021	1	机壳组件	Machine cover
22	280001070	1	安全标示	SAFETY MARKING
23	288001023	1	检验标示	INSPECTION SIGN
24	280001071	1	机器翻倒说明	MACHINE OVERTURN INSTRUCTIONS
25	991001012	1	安全指示牌	SAFETY IABLE
26	S154374006	1	螺钉	SCREW
27	S073184404	1	螺钉	SCREW
28	991001057	1	垫片	Grease plate gasket
29	280001004	1	面部防油板	Arm oil shifld plate gasket
30	288004041	1	油封	Oil seal
31	280001063	1	操作面板出线橡胶塞	Rubber plug

## 2. 針桿和挑線桿裝置

## Needle bar and thread take-up mechanism



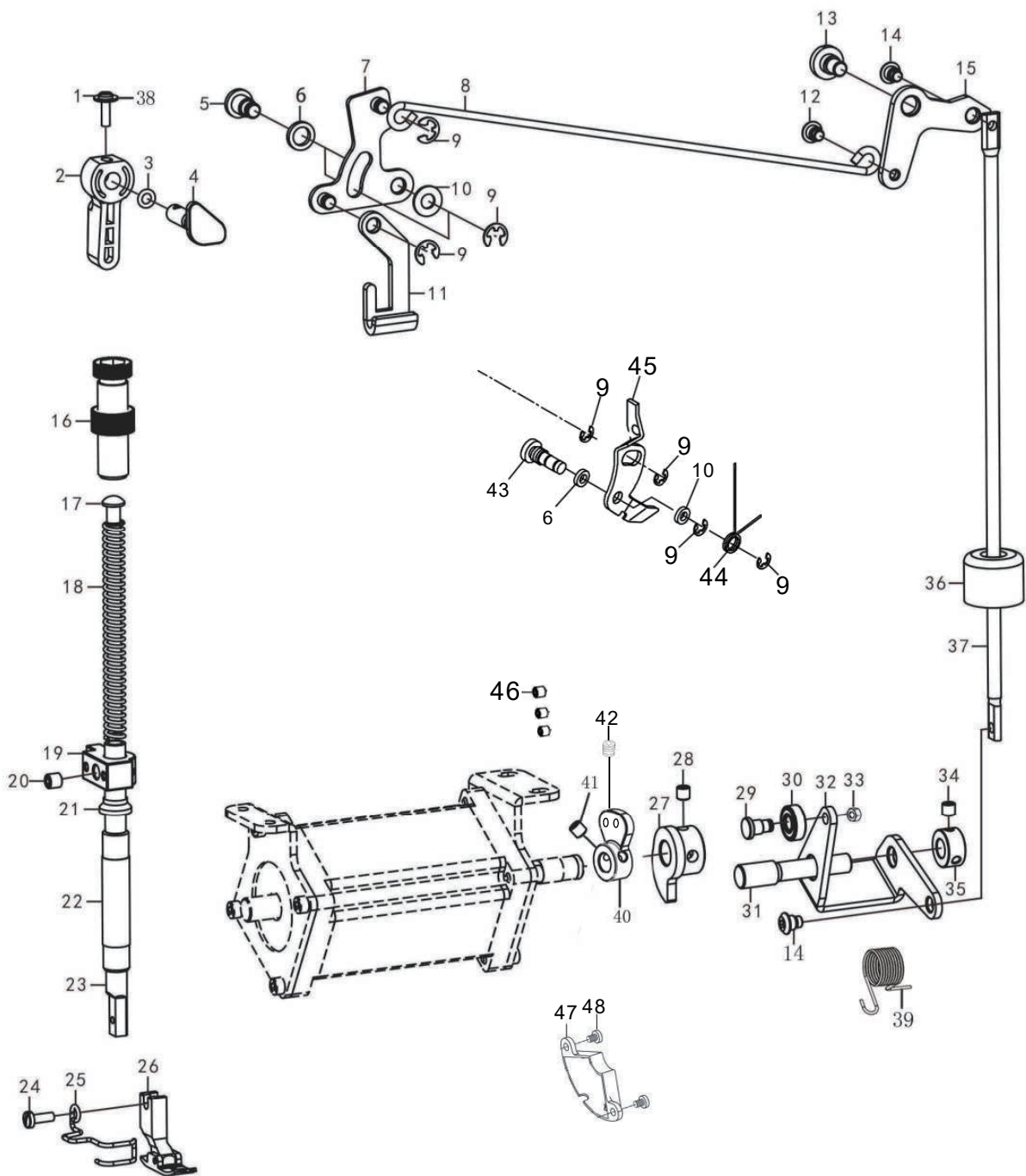
# BYL-

序号	物料编码 (BYL-xxx)	用量	零件名称	NAME OF PARTS
1	S127142816	1	螺钉 SM7. 14×28-16	SCREW SM7. 14×28-16
2	991002024	1	油量调节销	RUBBER CAP
3	991002009-5	1	针杆曲柄	COUNTER WEIGHT
4	S077142815	1	螺钉 SM7. 14×28-15. 5	SCREW SM7. 14×28-15. 5
5	991002017	1	上轴前轴套	MAIN SHAFT BUSHING FRONT
6	S126354006	2	螺钉 SM6. 35×40-6	SCREW SM6. 35×40-6
7	S144374006	2	螺钉	SCREW
8	991009016	1	绕线驱动轮	BOBBIN WINDER DRIVING WHEEL
9	991002018	1	上轴中轴套	BUSHING INTERMSDIATE
10	288002010	1	上轴	MAIN SHAFT
11	991002012	1	上轴后轴套	MAIN SHAFT BUSHING REAR
12	991002013	1	油封	OIL SEAL
13	380022101	1	电机组件	SERVO MOTOR ASSY
14	280002014	3	弹性垫圈	SPRING WASHER
15	S044374006Z	3	螺钉SM4. 37X40-6	SCREW SM4. 37X40-6
16	M180500814	3	螺钉 M5×14	SCREW M5×14
17	380022301	1	编码器	FILM ROTATING AND ENCODER ASSY
18	M070300505	3	螺钉M3×5	SCREW M3×5
19	288C02019	1	手轮	HANG WHEEL ASM
20	M140500806	2	螺钉	SCREW M5×10
21	991014011	1	机针DBX1 14	NEEDLE DPX1 14
	991003011H-5	1	机针 DPX5 20	NEEDLE DPX5 20
22	991002001	1	螺钉 SM5. 95X28-10. 5	SCREW SM5.95X28-10.5
23	991002004	1	挑线杆组件 M	THREAD TAKE-UP LEVER ASM M
	991002004H	1	挑线杆组件 H	THREAD TAKE-UP LEVER ASM H
24	W220801605	1	垫圈	WASHER
25	280002004	1	针杆连接柱滑块	SLIDE BLOCK
26	991003007	1	针杆下套线勾	NEEDLE BAR THREAD GUIDE
27	991003001	1	针杆上套孔塞	RUBBER CAP 8. 5
28	280003036	1	油毡	FELT
29	991003002	1	针杆上套	NEEDLE BAR BUSH U
	991003003	1	针杆 M	NEEDLE BAR M
30	991003003H	1	针杆 H	NEEDLE BAR H
	991003008	1	针杆下套 M	NEEDLE BAR BUSH D M
31	991003008H	1	针杆下套 H	NEEDLE BAR BUSH D H
	991003010	1	针杆过线环M	NEEDLE BAR THREAD GUIDE M
32	030302025	1	针杆过线环H	NEEDLE BAR THREAD GUIDE H

# BYL-

序号	物料编码 (BYL-xxx)	用量	零件名称	NAME OF PARTS
33	S083184405	1	支针螺钉SM3. 18	SCREW SM3. 18
34	991001035	1	推板组件	SLIDE PLATE COMPONENTS
35	991001028	1	针板 M	THREAD PLATE M
	991001028H	1	针板 H	THREAD PLATE H
36	991002015	1	上轴挡圈	THRUST COLLAR ASM
37	S116354006	2	螺钉	SCREW
38	991002019	1	挑线杆橡胶套	Rubber
39	991002025	1	上轴油量调节销O型圈	Rubber ring
40	870002013	1	油量销套	Oil throttle
41	280003036	1	曲柄油量限制毡	Roller felt
42	S145952806	1	上轴中轴套螺钉	Screw
43	S078732811	1	螺钉	Screw

### 3. 壓腳裝置 Presser foot mechanism





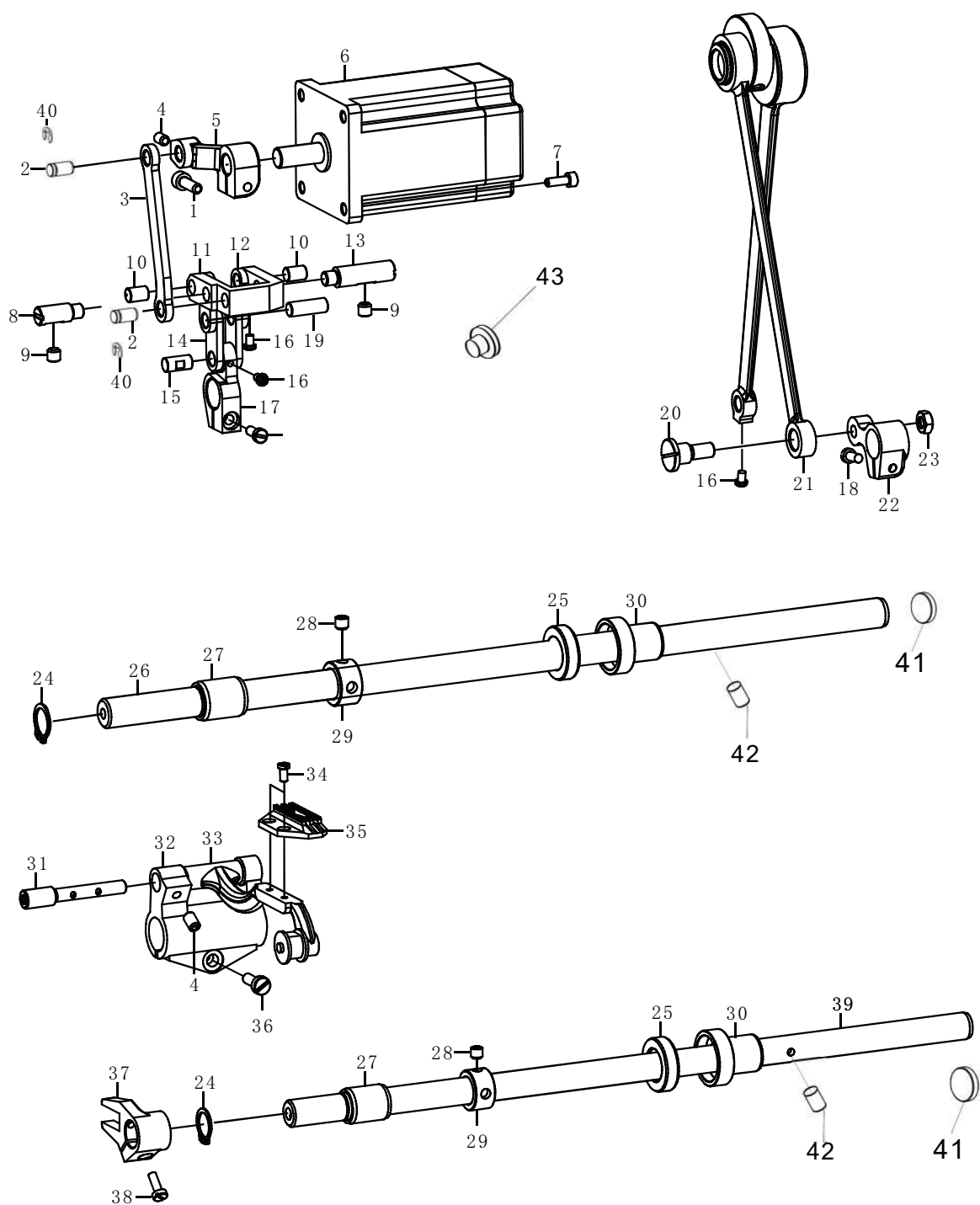
# BYL-

序号	物料编码 (BYL-xxx)	用量	零件名称	NAME OF PARTS
1	991004002	1	螺钉 SM3.57×40-9.5	SCREW SM3.57×40-9.5
2	991004001	1	抬压脚扳手	HAND LIFTER
3	991004003	1	O型圈 P4	RING P4
4	LB1112	1	抬压脚凸轮	PRESS FOOT LIFTER CAM ASM
5	991004007	2	前杠杆螺纹销	LINK SHAFT
6	991004039-1	2	红纸垫	WASHER
7	280004019-1	1	抬压脚前杠杆	HANK LIFTER LINK
8	288003008	1	抬压脚拉杆	LIFTING LEVER LINK
9	991004008	3	卡簧 E5	SNAP RING E5
10	W220600707	1	垫圈	WASHER
11	991004032-2	1	压脚升降板	LIFTING LEVER
12	991004010	3	轴位螺钉 SM4.76	SCREW SM4.76
13	288003013	1	轴位螺钉 SM6.35	SCREW SM6.35
14	288003014G	2	轴位螺钉	SCREW
15	288003015	1	抬压脚后杠杆	LIFT KNEE CONTROL LEVER
16	991004028A	1	调压螺钉组件M	PRESSURE REGULATING BOLT ASSY M
17	991004033	1	调压导杆	PRESSER GUIDE BAR
18	991004029	1	调压簧M	PRESSER SPRING M
18	870004004	1	调压簧H	PRESSER SPRING H
19	280004006	1	压杆导架	NEEDLE BAR GUIDE BRACKET
20	S126354006	1	螺钉 SM6.35×40-6	SCREW SM6.35×40-6
21	991004041	1	压杆下套防油圈	SHOCK PAD
22	991004005	1	压杆轴套	PRESSER BAR
23	991004031	1	压杆	PRESSER BAR BUSHING LOWER
24	S073574011	1	螺钉 SM3.57×40-11	SCREW SM3.57×40-11
25	991004036	1	护指器	PROTECT SHELF
26	991004009	1	压脚 M	MPRESSER FOOT ASM M
26	991004009H	1	压脚 H	MPRESSER FOOT ASM H
27	288003027	1	抬压脚凸轮	HAND LIFTER CAM
28	M140607508	2	螺钉 M6×0.75-8	SCREW M6×0.75-8
29	288003029	1	轴位螺钉	SCREW M6×0.75-16
30	288003030	1	压脚扳手滚珠	BEARING
31	288003031	1	抬压脚曲柄轴	PRESSER FOOT CRANK SHAFT
32	288003032	1	抬压脚驱动曲柄	PRESSER FOOT DRIVING CRANK
33	N210607503	1	螺母 M6×0.75	NUT M6×0.75
34	S074374005	2	螺钉 SM4.37X5	SCREW SM4.37X5
35	991003020	1	紧圈	SET SCREW COLLAR
36	288003036	1	膝控提升杆橡皮塞	RUBBER CAP
37	288003037	1	抬压脚顶杆	CONNECTING ROD VERTICAL
38	991004042	1	垫片	SHIM
39	288003039	1	压脚复位簧	TORSION SPRING
40	288003040	1	感应器	A SERSOR
41	M140500808	2	螺钉	SCREW

# BYL-

序号	物料编码 (BYL-xxx)	用量	零件名称	NAME OF PARTS
42	M140300503	1	螺钉	SCREW
43	991004026	1	松线顶板螺纹销	Link shaft
44	991004022	1	松线顶板复位簧	Tension release return spring
44	991004022H	1	松线顶板复位簧(厚料)	Tension release return spring
45	280004017	1	松线顶板	Thread tension release wire
46	280003046	3	磁铁	Magnet
47	380110901-2	1	编码器	Encoder
48	M070300505	2	螺丝	Screw

#### 4. 送料装置 Feed mechanism chanism components



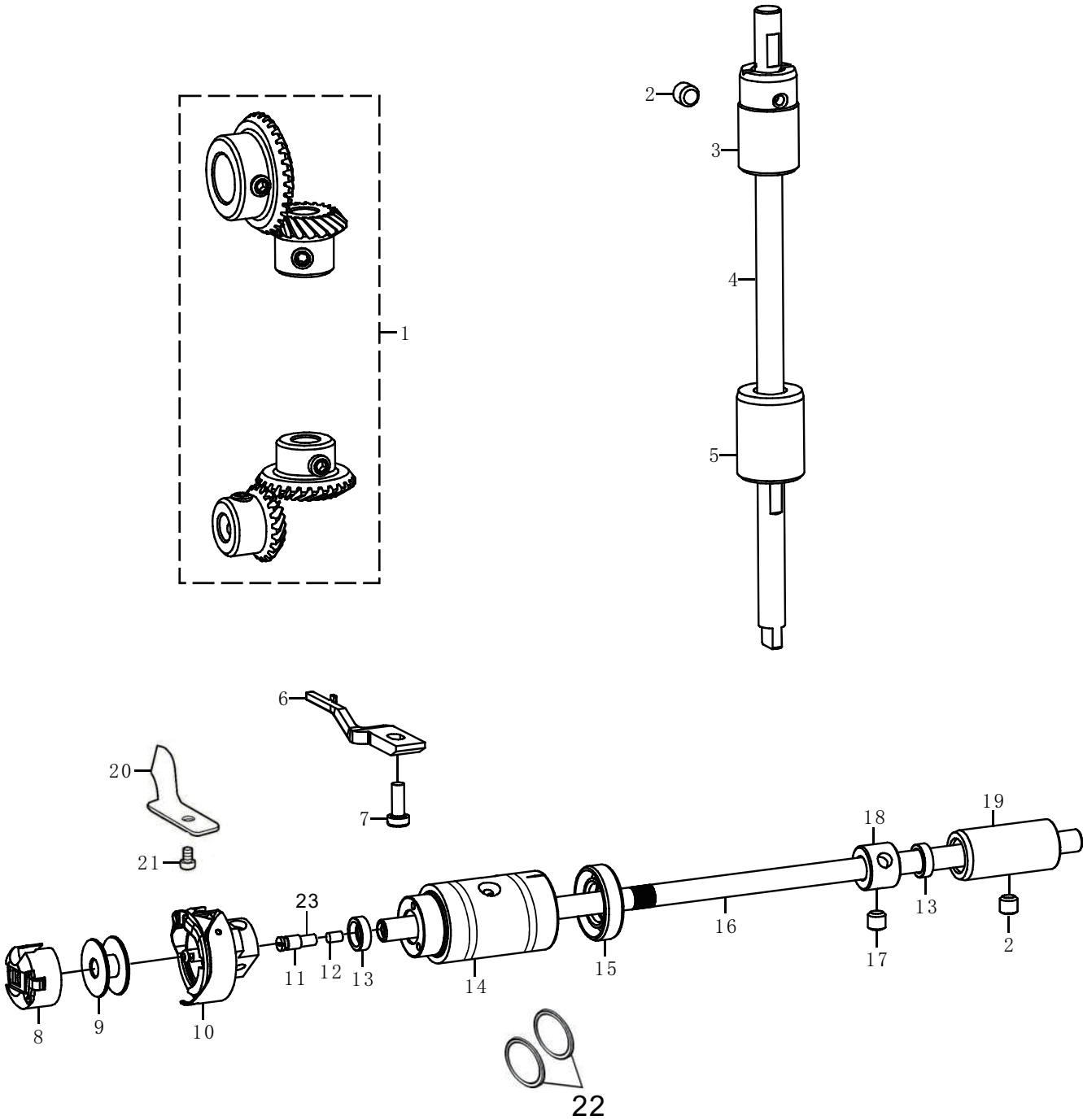
# BYL-

序号	物料编码 (BYL-xxx)	用量	零件名称	NAME OF PARTS
1	M180500816	1	螺钉 M5×16	SCREW M5×16
2	288004002	2	连杆轴	STUD
3	288004003	1	倒缝连杆	F-REGULATOR CONNECT ROD
4	S14374006	2	螺钉 SM4. 37×40-6	SCREW SM4. 37×40-6
5	288004005	1	倒缝曲柄	INVERTED CRANK
6	288004006	1	倒缝步进电机	BACKSEWING STEPPING MOTOR
7	M180400714	4	螺钉 M4×14	SCREW M4×14
8	991005026	1	摆动板座左销	ADJUSTING LINK FULCRUM SHAFT
9	991002001	2	螺钉 SM5. 95×28-8	SCREW SM5. 95×28-8
10	280004010	2	短摆动板连接销	FEED LINK STUD
11	288004011	1	摆动座	LEVEL FEED REGULATOR
12	280004012	2	短摆动板	FEED ROCKER LINK
13	288004013	1	摆动座右销	ADJUSTING LINK FULCRUM SHAFT
14	280004014	2	长摆动板	FEED ROCKER ARM LINK
15	991005038	1	送料曲柄销	WSL KING FOOT PIN
16	S073574005	5	螺钉 SM3. 57×40-5	SCREW SM3. 57×40-5
17	991005041	1	送布曲柄	FEED ROCKER SHAFT CRANK
18	S074762815	2	螺钉	SCREW
19	991005013	1	送料连杆销	NWALKING FOOT PIN
20	991005045	1	抬牙连杆轴位螺钉	HINGE SCREW
21	288004021M	1	连杆组件 M	CONNECTING ROD ASM M
	991005067H	1	连杆组件 H	CONNECTING ROD ASM H
22	991005043	1	抬牙后曲柄	REAR CRANK ASM
23	N217142805	1	螺母 SM5. 95	NUT SM5. 95
24	991005051	2	抬牙轴用挡圈 C14	RING C14
25	280005062	2	送布、抬牙中套油封	OIL SEAL
26	288004026	1	送布轴	FEED ROCKER SHAFT
27	991005049	2	送布轴前轴套	FEED ROCKER SHAFT METAL
28	S126354004	4	螺钉 SM6. 35×40-4	SCREW SM6. 35×40-4
29	991002015	2	送布轴挡圈	THRUST COLLAR
30	280005061	2	送布轴中套	FEED ROCKER SHAFT METAL
31	991005029	1	牙架销	FEED BAR SHAFT
32	991005052	1	牙架座	FEED ROCKER
33	991005033	1	牙架	FEED BAR
34	S073184406	2	螺钉 SM3. 18×44-6	SCREW SM3. 18×44-6
35	991005031	1	送料牙 M	FEED DOG M
	991005031H	1	送料牙 H	FEED DOG H
36	S074762812	1	螺钉 SM5. 95×28-12	SCREW SM5. 95×28-12

# BYL-

序号	物料编码 (BYL-xxx)	用量	零件名称	NAME OF PARTS
37	991005054	1	抬牙叉	DRIVING SHAFT CRANK ASM FRONT
	991005054H	1	抬牙叉 H	DRIVING SHAFT CRANK ASM FRONT H
38	S084374012	1	螺钉	SCREW
39	288004039	1	抬牙轴	FEED DRIVING SHAFT
40	288004040	1	卡簧	REED SPRING
41	288004041	2	橡胶塞	Rubber plug
42	991005064	2	油毡	ASPHALT FELT
43	288001029		橡胶塞	Rubber plug

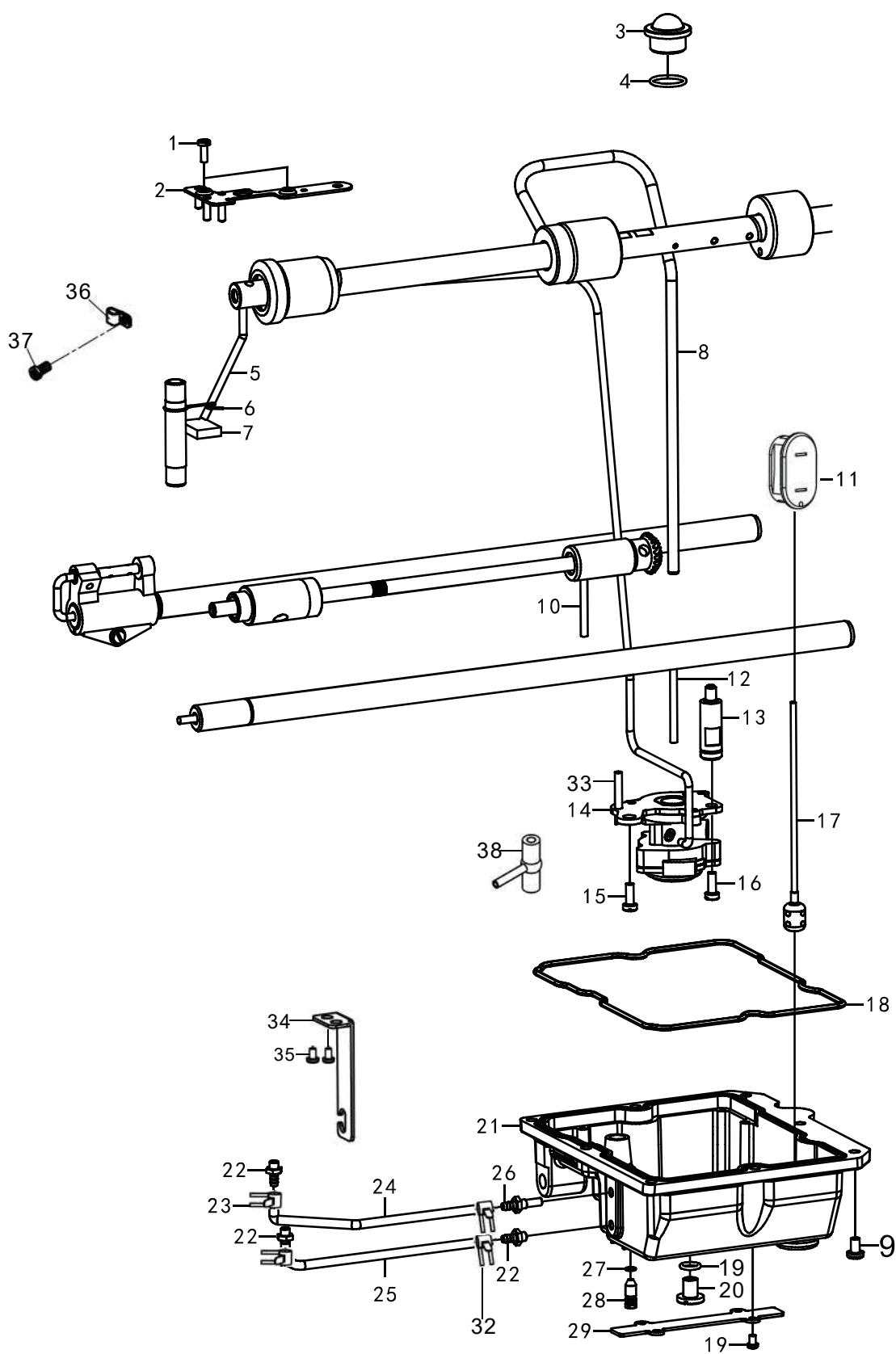
5. 旋梭裝置 Hook components



# BYL-

序号	物料编码 (BYL-xxx)	用量	零件名称	NAME OF PARTS
1	991003012	1	伞齿轮组件	BEVEL GEAR ASSY
2	S145952804	1	螺钉	SCREW
3	991003016-1	1	竖轴上轴套	VERTICAL SHAFT BUSH U
4	991003014-1	1	竖轴	VERTICAL SHAFT
5	991003018	1	竖轴下轴套	VERTICAL SHAFT BUSH D
6	991003023	1	旋梭定位勾	HOOK STOPPER
	870013014		旋梭定位勾 H	HOOK STOPPER H
7	S084374011	1	螺钉 SM4. 37×40-11	SCREW SM4.37X40-11
8	991003030	1	梭芯套组件	BOBBIN CASE ASSY
9	991003029	1	梭芯	BOBBIN
	991003015	1	旋梭组件 M	ROTARY HOOK ASSY M
10	991003015H	1	旋梭组件 H	ROTARY HOOK ASSY H
11	991003028	1	油芯螺钉	OIL COVER SCREW
12	LL1122	1	油芯	OIL CORE
13	030306031	2	油封	OIL SEAL
14	280002019	1	下轴前套	PUMP BUSH
15	280003033	1	油封	OIL SEAL
16	991003022	1	下轴	ROTARY HOOK SHAFT
	991107001		下轴 H	ROTARY HOOK SHAFT
17	S074374005	2	螺钉 SM4. 37×40-5	SCREW SM4. 37×40-5
18	991003020	1	下轴挡圈	SET SCREW COLLAR
19	380072401G	1	下轴后轴套	BUSHING REAL
20	280006040	1	分线片	LOWER THREAD FINGER
21	S073574006	1	螺钉	SCREW
22	280003035	1	O型圈	O-RING
23	991003027	1	下轴限油芯	oil wick

## 6. 供油潤滑裝置 Lubrication

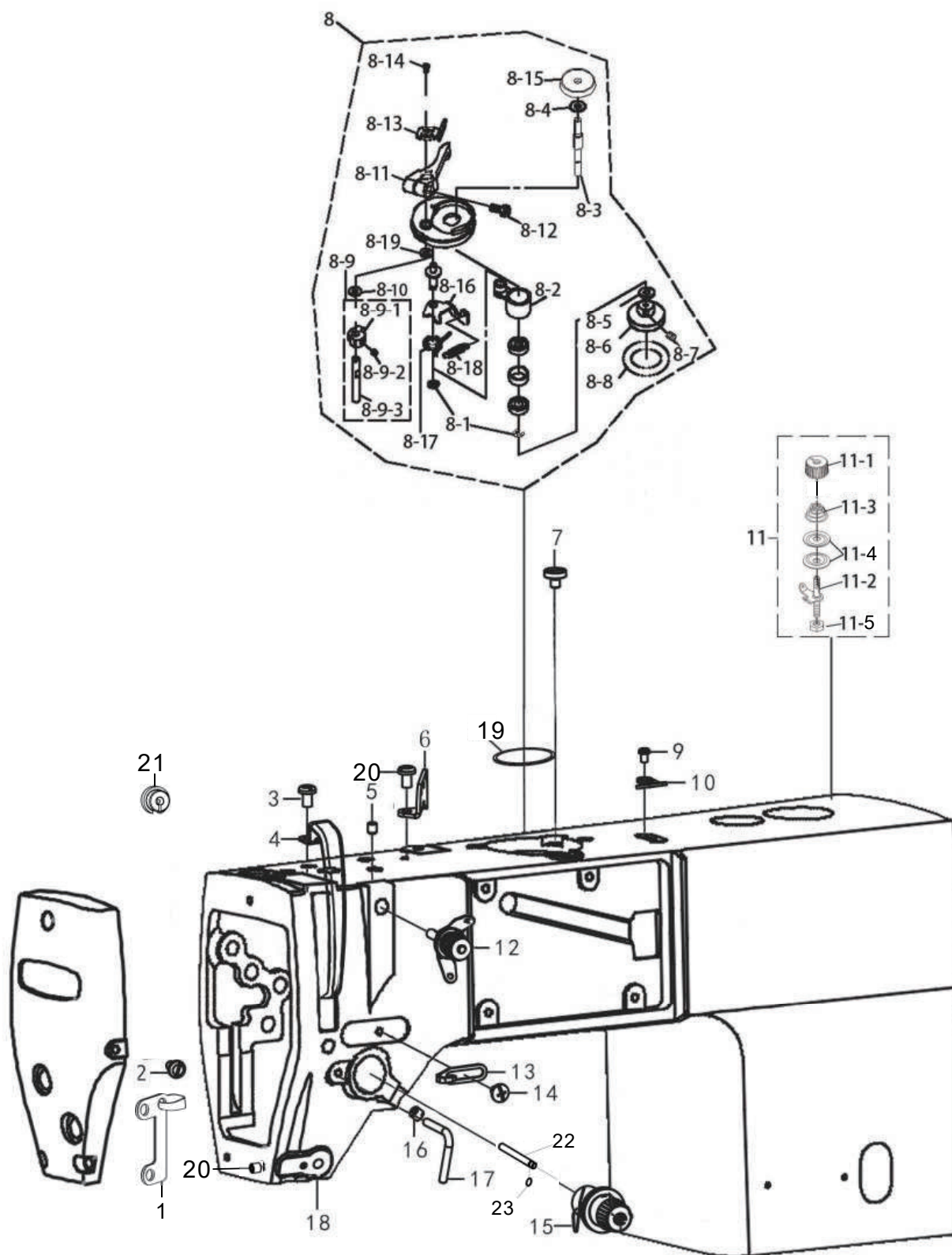




# BYL-

序号	物料编码 (BYL-xxx)	用量	零件名称	NAME OF PARTS
1	S093574016	2	螺钉	SCREW
2	991001052	1	油线固定板组件	OIL THREAD BOARD ASM
3	991009001	1	油窗	OIL GAUGE WINDOW
4	991009002	1	O 型圈	O RING
5	991009006	1	油管 L=	VINYL TUBE L=
6	991009005	1	油毡夹	OIL FELT PRESSER
7	991009019	1	回油管垫	FELT
8	991009003	1	上轴供油管	MAIN SHAFT OIL TUBE
9	M180500816	1	螺钉 M5×16	SCREW M5×16
10	991009008	1	油线	WLCK
11	288C06011	1	油量视窗	OIL GAGE WINDOW
12	991009008	1	油线	WLCK
13	991009013	1	油泵支柱	OIL PUPM SUPPORT
14	288009014	1	油泵组件	PUMP UNIT
15	S075952810	1	螺钉 SM5. 95×28-10	SCREW SM5. 95×28-10
16	S074374010	1	螺钉 SM4. 37×40-10	SCREW SM4. 37×40-10
17	288006017	1	浮球组件	FLOAT ASSY
18	288006018	1	油盒密封圈	OIL BOX SEALING RING
19	280010031G	1	垫圈	O Ring
20	380084601	1	放油螺钉	Screw
21	288006021	1	油盒	OIL BOX
22	280001058	3	回油口	OIL FEEDING PIPE
23	288C06023	4	油管夹	OIL PIPE CLAMP
24	280009005	1	油管	NINYL TUBELQ
25	280009005	1	油管 L=	VINYL TUBE L=
26	280010028	1	供油口	OIL FEEDING PIPE
27	O000660015	1	O型圈 S4	O RING S4
28	380082101	1	调节螺钉	ADJUESTING SCREW
29	288006029	1	电线压板	WIRE PLATE
30	380084701	1	O型圈 P8	O RING P8
31	380084601	1	放油螺钉 M8	SCREW PAN M8
32	991009007	1	回油管夹	Holder
33	280009012	1	小油管	Rubber joint
34	380082801	1	油管支架	Tubing bracket
35	M070500808	2	螺钉	Screw
36	991009007	1	回油管夹	Holde
37	S094762806	1	回油管夹螺钉	Screw
38	991009015	1	供油管接头	Rubber joint

## 7. 穿線裝置 Threading mechanism



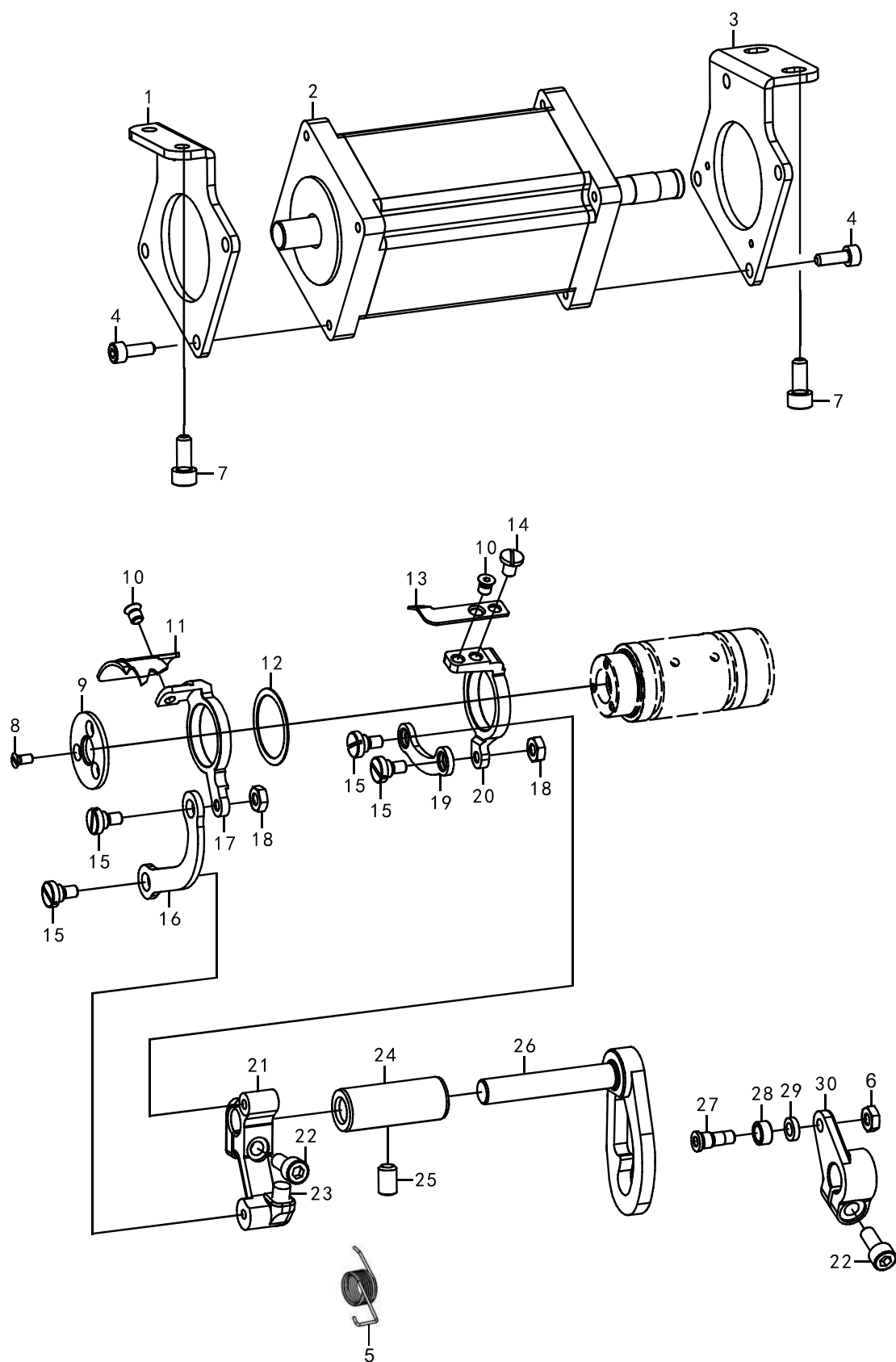
# BYL-

序号	物料编码 (BYL-xxx)	用量	零件名称	NAME OF PARTS
1	280001031	1	面线线勾	FACE PLATE THREAD GUIDE
2	S074374006	1	螺钉 SM4. 37X40-6	SCREW SM4.37X40-6
3	S094762806	1	螺钉 SM4. 76×28-6	SCREW SM4. 76×28-6
4	991001021	1	挑线杆防护罩	THREAD TAKE-UP LEVER COVER
5	S114374006	1	螺钉	SCREW
6	991001007	1	三眼过线板	SPOOL PLATE
7	M080500810	3	螺钉 M5×10	SCREW M5×10
8	280001041	1	绕线器组件	BOBBIN WINDER ASM
8-1	991001041-1	2	挡圈	RING
8-2	991001041-2	1	绕线器基座	BOBBIN BASE
8-3	991001041-3	1	绕线轴	SPOOL
8-4	991001041-4	1	O型圈	ORING
8-5	991001041-5	1	平垫圈	WASHER
8-6	991001041-6	1	绕线轮	WINDING WHEEL
8-7	991001041-7	2	螺钉M5X5	SCREW
8-8	991001041-8	1	橡皮垫圈	RUBBER WASHER
8-9	991001041-9	1	梭芯夹凸轮组件	SHUTTLE CAM ASM.
8-9-1	991001041-9-1	1	梭芯夹凸轮	SHUTTLE CAM.
8-9-2	991001041-9-2	1	螺钉M5X5	SCREW
8-9-3	991001041-9-3	1	梭芯夹轴	SHUTTLE CLAMP SHAFT
8-10	991001041-11	2	平垫圈	FLAT WASHER
8-11	991001041-12	1	梭芯压臂柄	SHUTTLE ARM HANDLE
8-12	991001041-13	1	螺钉M4X12	SCREW
8-13	991001041-14	1	梭芯夹	BOBBIN CLIP
8-14	991001041-15	2	螺钉SM4. 76	SCREW
8-15	991001041-16	1	梭芯座	BOBBIN BASE
8-16	991001041-17	1	绕线杠杆	WINDING LEVER
8-17	991001041-18	1	弹簧	SPRING
8-18	991001041-19	1	弹簧	SPRING
8-19	991001041-20	1	O型密封圈	O TYPE SEALING RING
9	S093574005	2	螺钉 SM3. 57×40-5	SCREW SM3. 57×40-5
10	991001043	1	割线刀	KNIFE
11	280001045	1	绕线器夹线组件	BOBBIN THREAD TENSION ASM
11-1	991001045-1	1	夹线螺母	TENSION NUT
11-2	991001045-2	1	夹线螺钉	TENSION POST
11-3	991001045-3	1	夹线弹簧	TENSION SPRING
11-4	991001045-4	2	夹线板	THREAD TENSION DISK PRESSER
11-5	991001045-6	1	夹线螺母（下）	TENSION NUT
12	280001019	1	调线夹线器组件	THREAD TENSION ASM
13	991001023	1	右线钩	FRAME THREAD GUIDE R
14	S074374006	1	螺钉 SM43. 7X40-6	SCREW
15	288007015	1	松线器组件线长26cm	THREAD TENSION ASSY
16	S144762805	1	电子夹线器固定螺钉	SCREW

# BYL-

序号	物料编码 (BYL-xxx)	用量	零件名称	NAME OF PARTS
16	S115952811	1	螺钉	SCREW
17	280001049	1	大线钩	P-BAR BRACKET THREAD GUIDE
18	288007018	1	电子夹线器线长30cm	THREAD TAKE-UP 30cm
19	991001056	1	绕线器垫片	BOBBIN WASHER
20	S074374007	1	螺钉	Screw
21	280001065	1	电子松线器过线橡胶塞	Rubber plug
22	280001027	1	松线钉	Tension releasing
23	991002025	1	O 型圈	O-ring

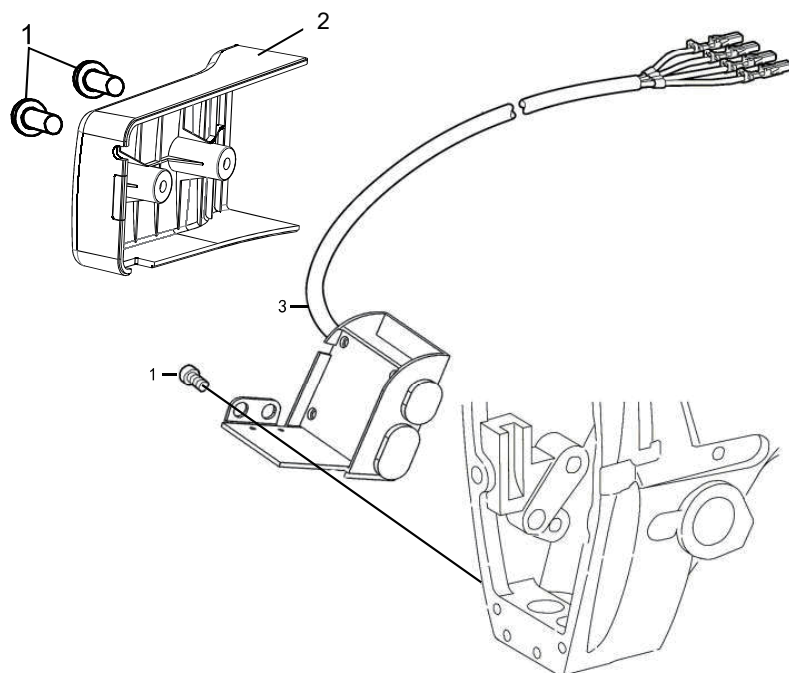
## 8. 切線裝置 Thread trimmer mechanism



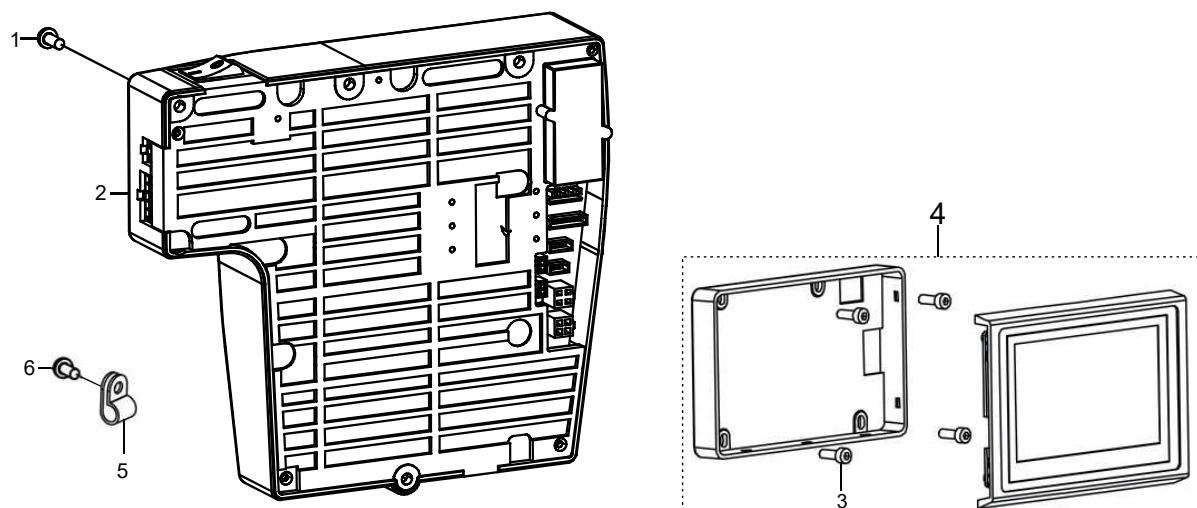
# BYL-

序号	物料编码 (BYL-xxx)	用量	零件名称	NAME OF PARTS
1	288008001	1	电机安装板 L	SOLENOID SETTING PLATE L
2	288008002	1	剪线电机	MOTOR
3	288008003	1	电机安装板 R	SOLENOID SETTING PLATE R
4	M180400710	8	螺钉 M4×10	SCREW M4×10
5	Lu1255	1	弹簧	SPRING
6	288008031	1	螺母 SM4. 37	NUT SM4. 37
7	M180500812	4	螺钉 M5×12	SCREW M5×12
8	M040300507	3	螺钉 M3×7	SCREW M3×7
9	280006007	1	动刀压板	KNIFE HOLDER PRESSER PLATE
10	S047374005	3	螺钉 SM4. 37	SCREW SM4. 37
11	280006002	1	下动刀	MOVABLE KNIFEL
12	280006045	1	垫圈	WASHER
13	280006044	1	上动刀	MOVABLE KNIFEL
14	S074374005	1	螺钉 SM4. 37×40-5	SCREW SM4.37X40-5
15	280006011	4	轴位螺钉 M4	SCREW M4
16	280006010	1	刀架长连杆	KNIFE HOLDER CONNECTING ROD L
17	280006001	1	下刀架	KNIFE HOLDER D
18	N210400703	2	螺母 M4	NUT M4
19	280006009	1	刀架短连杆	KNIFE HOLDER CONNECTING ROD S
20	280006004	1	上刀架	KNIFE HOLDER U
21	280006012	1	切线曲柄	THREAD TRIMMER LEVER
22	M180500814	2	螺钉 M5×14	SCREW M5×14
23	280006014	1	驱动曲柄止动块	POSITIONING BLOCK
24	280006017	1	叉轴轴套	FORKED SHAFT BUSH
25	S145952806	1	螺钉 SM5. 95×28-6	SCREW SM5.95X28-6
26	288008026	1	切线曲柄	THREAD TRIMMER LEVER
27	288008027	1	滚轮轴 C	ROLLER SHAFT C
28	288008028	1	滚轮	ROLLER
29	288008029	1	垫圈	WASHER
30	288008030	1	切线驱动曲柄	THREAD TRIMMER CAM LEVER SHAFT

## 9. 倒縫開關裝置 Quick reverse switch mechanism



## 10. 控制箱裝置和操作盒 Control box device and operation box



# BYL-

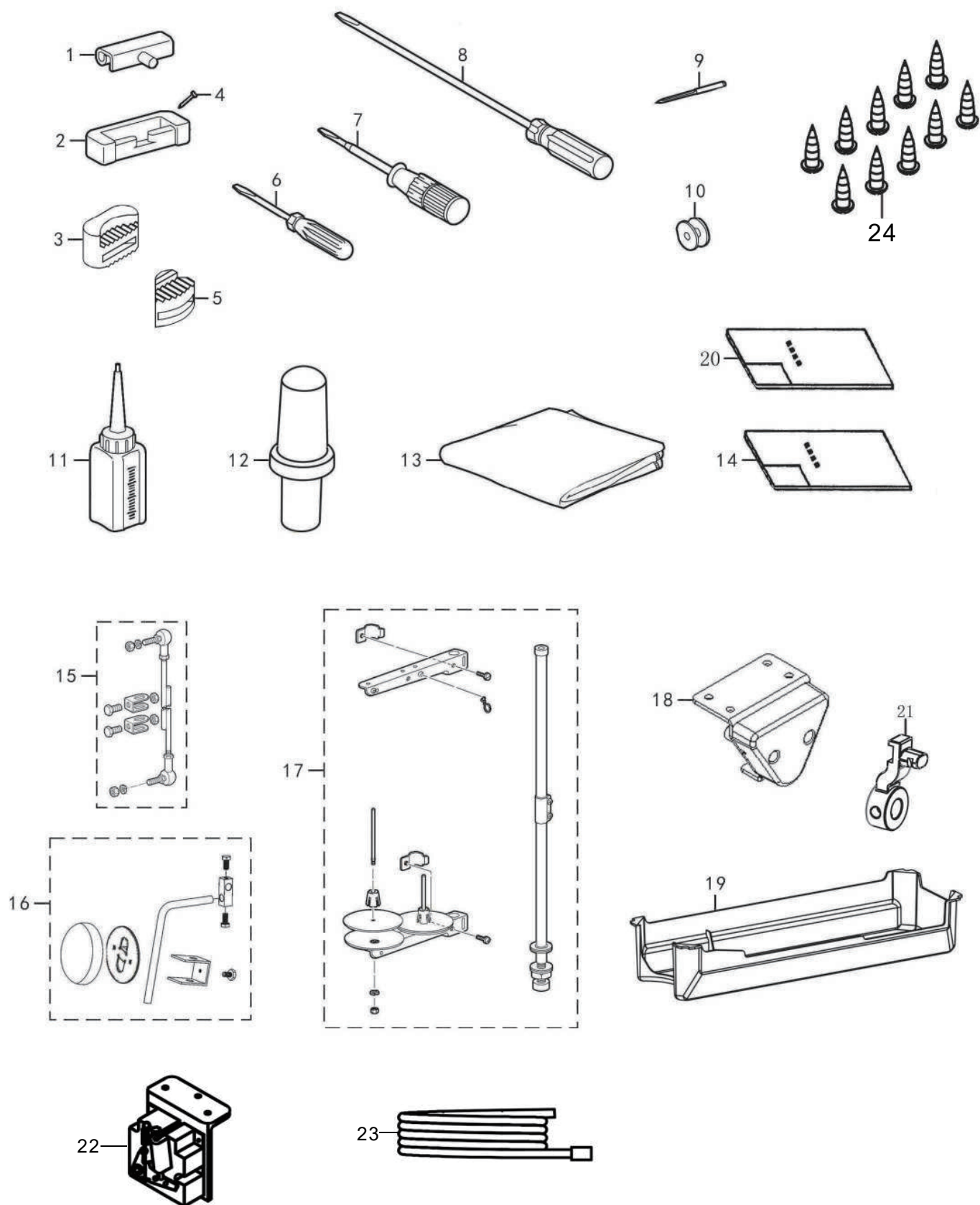
序号	物料编码 (BYL-xxx)	用量	零件名称	NAME OF PARTS
1	S094762806	4	螺钉 SM4. 76X28-6	SCREW SM4.76X28-6
2	288009004	1	电线罩壳	LINE BOX
3	288009003	1	倒缝开关组件线长 24 cm	R-SWITCH ASSY 24cm

# BYL-

序号	物料编码 (BYL-xxx)	用量	零件名称	NAME OF PARTS
1	S074762820	3	螺钉 SM4. 76X28-20	SCREW SM4. 76X28-20
2	288C10002U	1	电控组件	CONTROL BOX ASSY
3	S073574008	2	螺钉 SM3.57X40-8	SCREW SM3.5X40-8
4	288C10004U	1	控制面板	OPERATION PANEL
5	991001061	1	塑料线夹	CORD HOLDER
6	S074762809	1	螺钉	SCREW

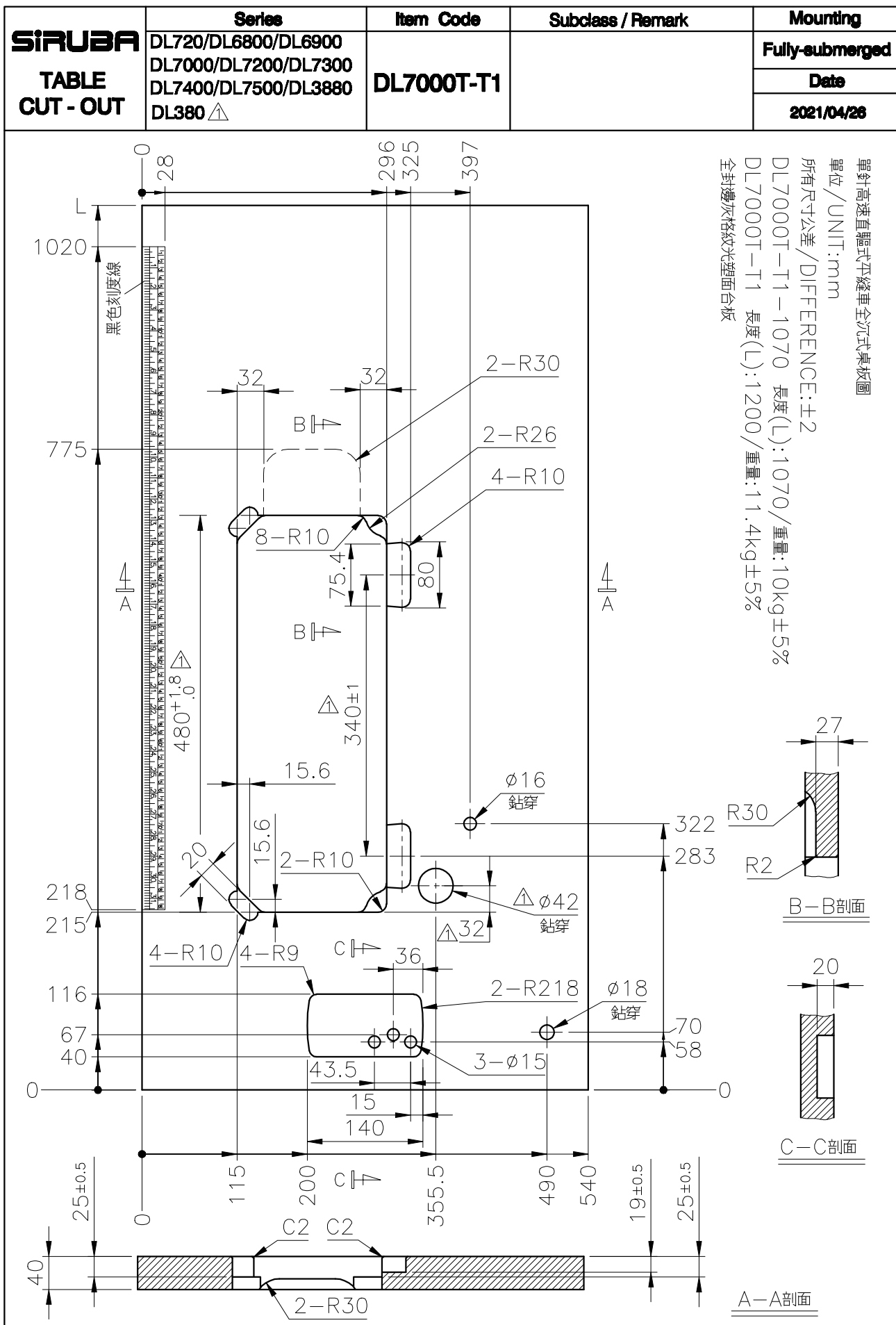


## 11. 附件 Accessories



# BYL-

序号	物料编码 (BYL-xxx)	用量	零件名称	NAME OF PARTS
1	991014001	2	机头铰链	MACHINE HINGE PLATE
2	991014003	2	机头铰链套	HINGE SLEEVE HEAD
3	280014012	2	防震垫(A)	QUAKEPROOF WASHER
4	991014002	4	钉	NAIL
5	280014013	2	防震垫(B)	QUAKEPROOF WASHER
6	991014006	1	螺丝刀 (小)	SCREW DIRVER
7	991014005	1	螺丝刀 (中)	SCREW DIRVER
8	991014004	1	螺丝刀 (大)	SCREW DIRVER
9	991014011	2	机针 DB×1 (#14)	NEEDLE DB×1 (#14)
9	991003011H-5	2	机针 DP×5 (#20)	NEEDLE DP×5 (#18)
10	991014007	3	梭芯	BOBBIN
11	280015010	1	中号油壶	OIL RESERIVIR
12	288011012	1	机头撑杆	HEAD REST
13	991014008	1	机头罩	HEAD COVER
14	288C11014	1	零件手册	PARTS BOOK
15	991014019	1	拉杆组件	CONNECTING ROD ASSY
16	991010015	1	膝控组件	KNEE LIFTER ASSY
17	991013001	1	线架组件 2DR	THREAD STAND ASM 2DR
18	380060101A	1	电子膝靠组件	ELECTRONIC KNEE CONTROL ASSY
19	280015019	1	托盘	OIL PAN
20	288011022	1	电控说明	ELECTRONIC CONTROL DESCRIPTION
21	380060601	1	膝控摆杆	KNEE CONTROL PENDULUM ROD
22	990000002	1	控速器	ACCUSE
23	990000010	1	电源线	POWER CORD
24	991014018	12	自攻螺丝	SCREW





高林股份有限公司  
KAULIN MFG. CO., LTD.

由於對產品的改良及更新，本產品使用說明書中與零件圖之產品及外觀的修改恕不事先通知！  
The specification and/or appearances of the equipment described in this instruction book & parts list are subject to change because of modification which will without previous notice.  
DL7200D.MAR.2023