

SIRUBA

零件圖

PARTS LIST

DL7200D-NM1/NH1



SIRUBA PARTS LIST	Series	Parts Group	Subclass Remark	Page
	DL7200D-NM1	01		1 / 1
				Date
				2024/06/21

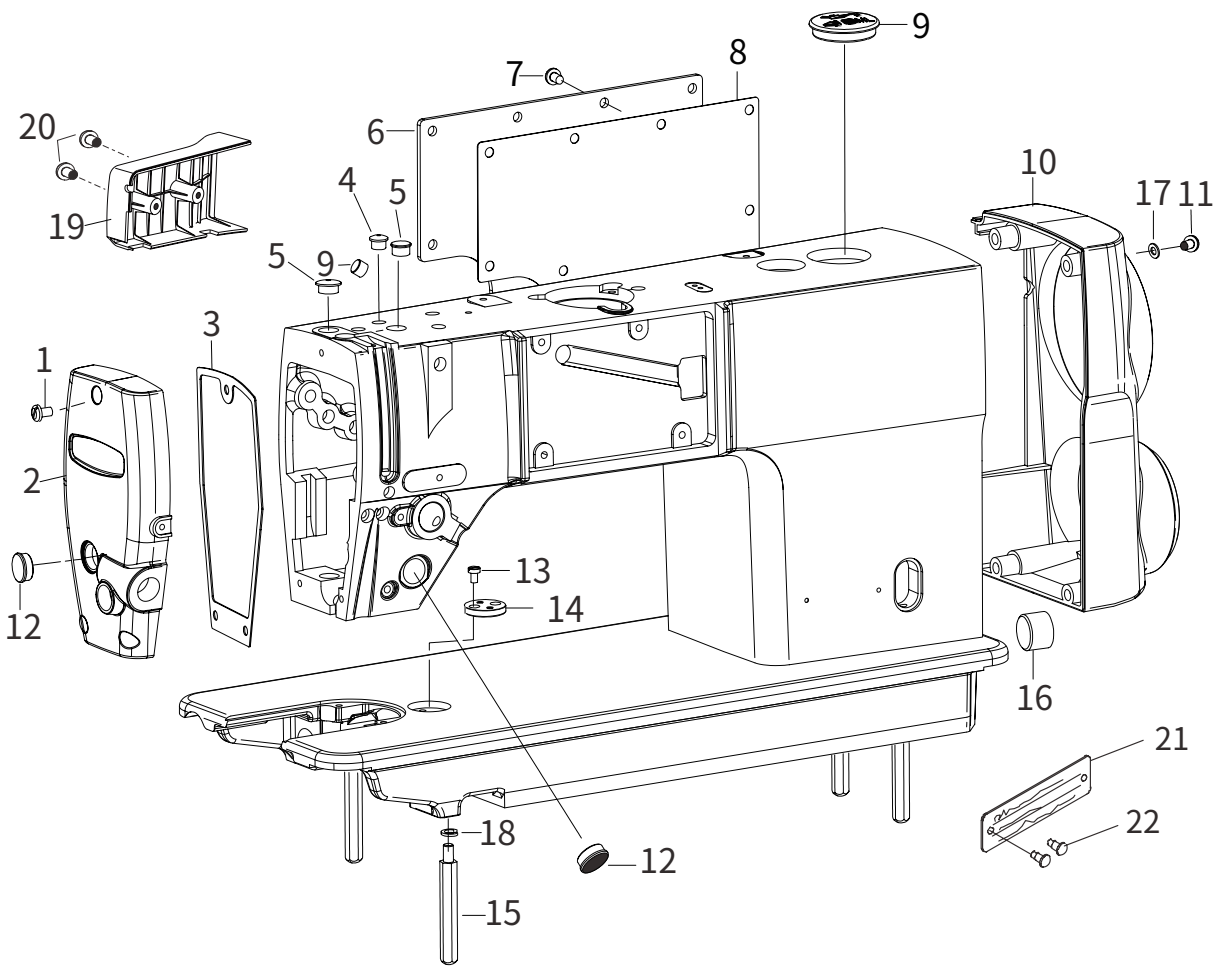
A

B

C

D

E



SiRUBA SEQUENCE LIST		Series		Parts Group	Subclass Remark	Page
		DL7200D-NM1		01		1 / 1
						Date
						2024/06/21
序號	物料號	數量	物料名稱		Deacription	
1	062711212	3	螺釘 SM4.76×32-12		SCREW PAN SM4.76×32-12	
2	288ZS01002	1	面板		FACE PLATE	
3	288ZS01003	1	面板墊		GASKET	
4	115010801	2	橡皮塞 8.5		RUBBER 8.5	
5	101011001	3	橡皮塞 12.5		RUBBER 12.5	
6	288C01006	1	后窗板		SIDE PLATE	
7	S094762809	9	螺釘 SM4.76 28×9		SCREW SM4.76 28×9	
8	288C01007	1	后窗板襯墊		GASKET	
9	168010901	1	橡皮塞 37.8		RUBBER 37.8	
10	288C01010W	1	電機罩殼(白色 長款)		MOTOR COVER	
11	018502536	4	螺釘 M5×25		SCREW PAN M5×25	
12	115010701	3	橡皮塞 15.5		RUBBER 15.5	
13	101013201	2	螺釘 SM4.37-40X5.5		SCREW PAN SM4.37-40x5.5	
14	101012601	1	卷邊器座		EDGE WINDING DEVICE	
15	168011701	4	底板支柱		BED SCREW STUD	
16	101011401	1	橡皮塞 21		RUBBER 21	
17	025050132	4	平墊圈5		FLAT WASHER 5	
18	028060246	4	彈簧墊圈T6		SPRING WASHER T6	
19	288ZS01021	1	電線罩殼		LINE BOX	
20	S094762806	1	螺釘SM4.76x28-6		SCREW	
21	7200D01061	1	型號牌		MODLE PLATE	
	7200D01061H	1	型號牌 (厚料)		MODLE PLATE	
22	7200D01023	2	鉚釘		POLE	

SIRUBA PARTS LIST	Series	Parts Group	Subclass Remark	Page
	DL7200D-NM1	02		1 / 1
				Date
				2024/06/21

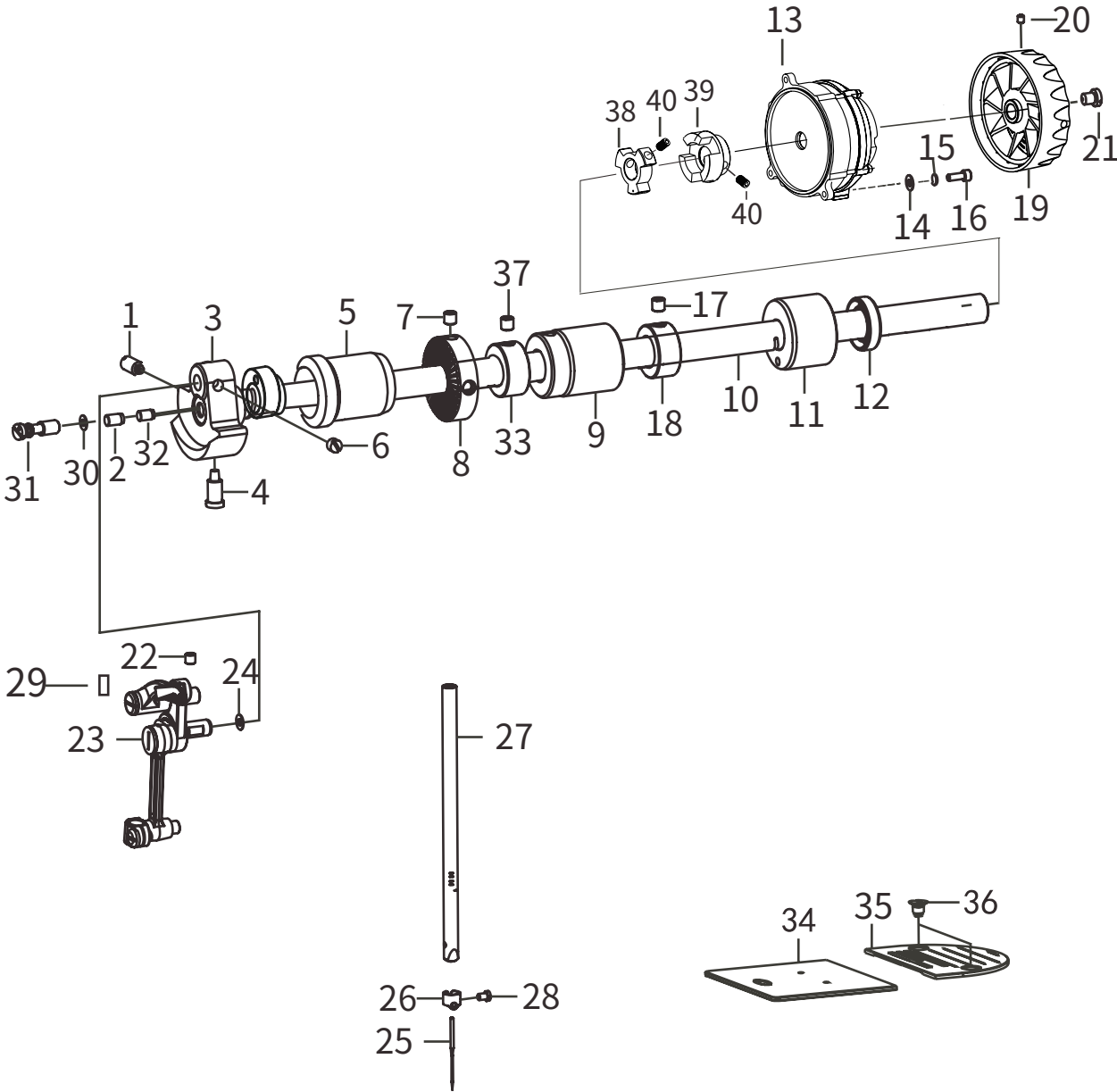
A

B

C

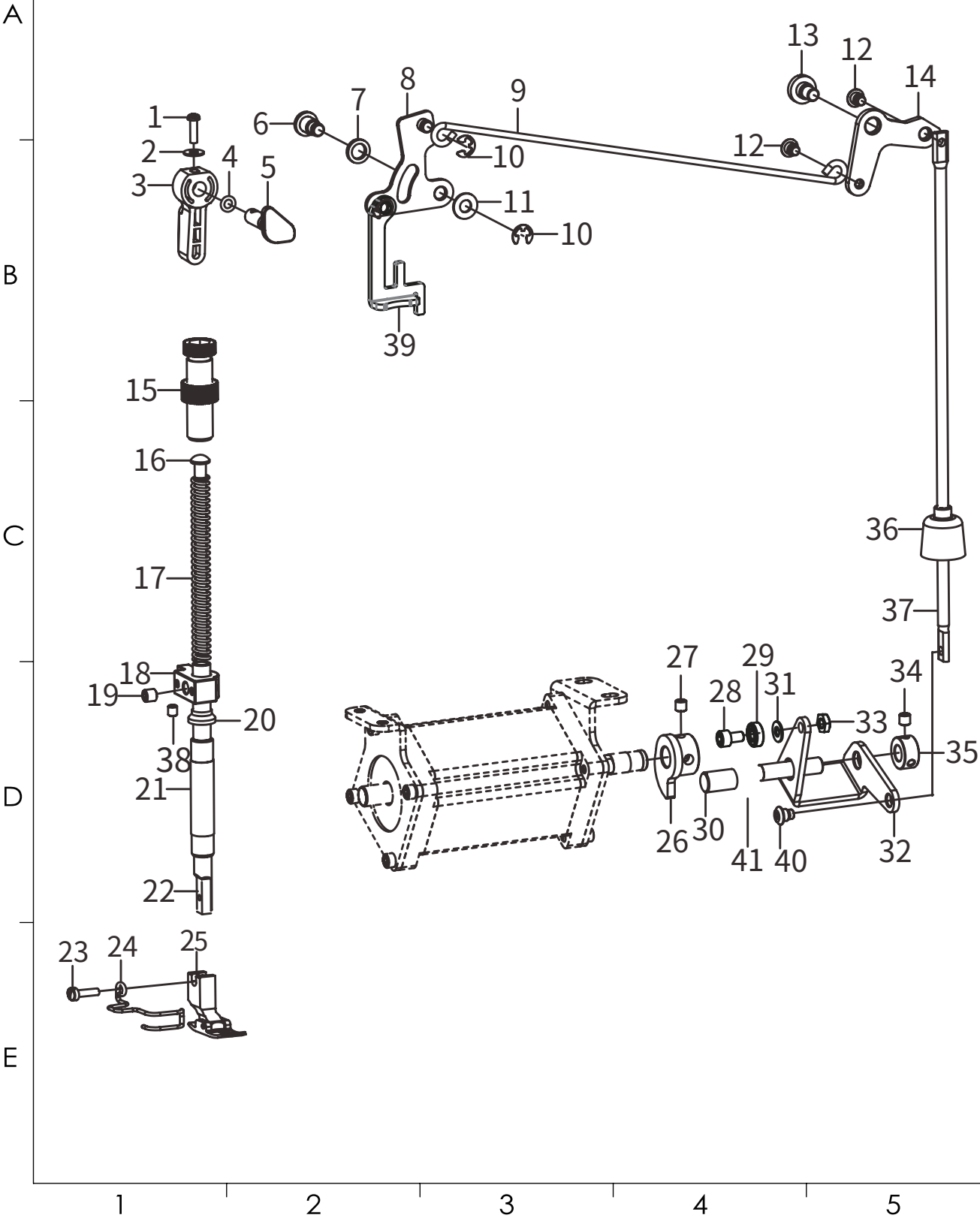
D

E



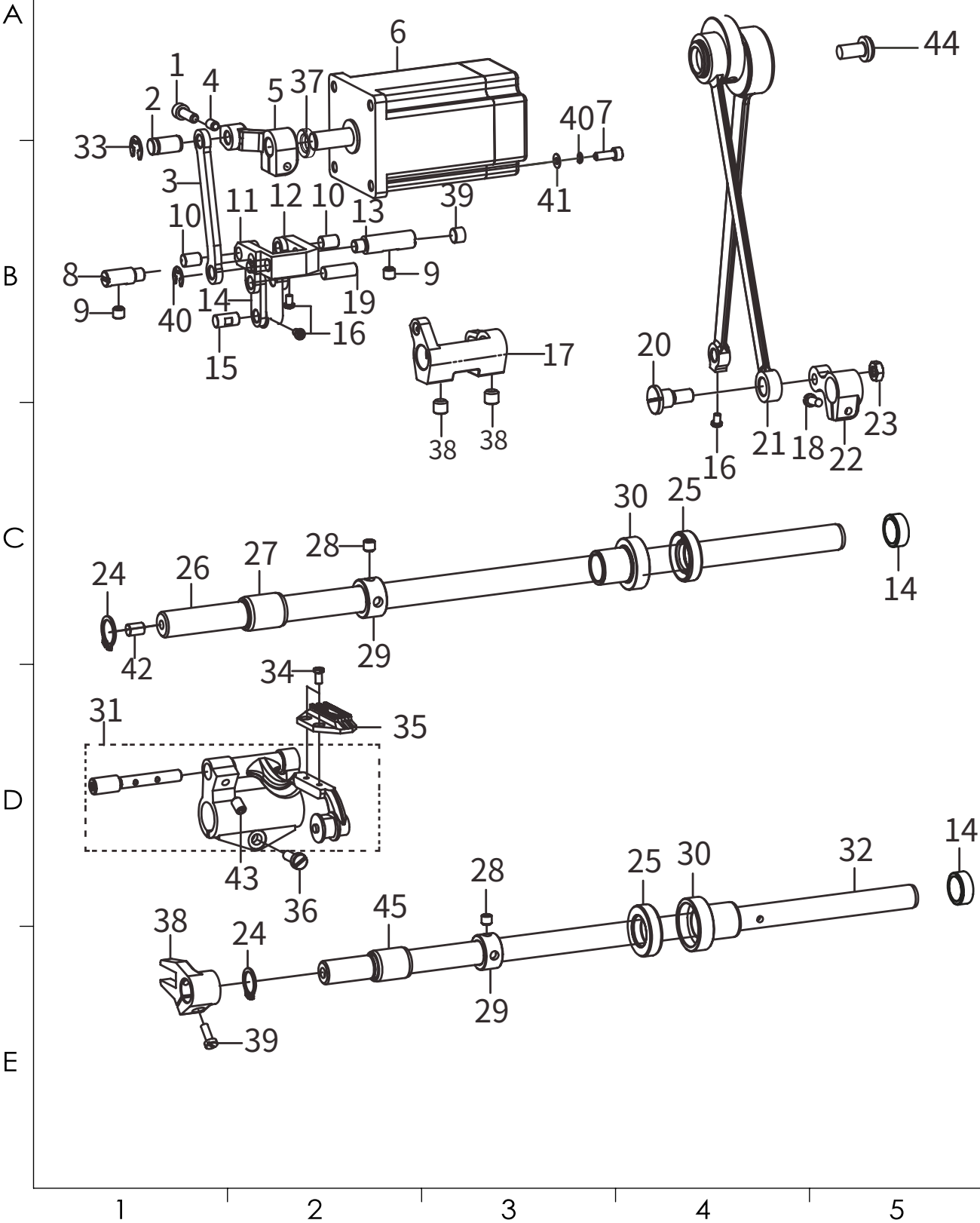
SiRUBA SEQUENCE LIST	Series	Parts Group	Subclass Remark	Page
	DL7200D-NM1	02		1 / 1
				Date
				2024/06/21
序號	物料號	數量	物料名稱	Deacription
1	101031601	1	螺釘 SM7.14	SCREW PAN SM7.14
2	101034301	1	油量銷套	RUBBER CAP 6.8
3	125031501	1	針杆曲柄	COUNTER WEIGHT
4	101031801	1	螺釘 SM7.14	SCREW PAN SM7.14
5	168020501	1	上軸前軸套	MAIN SHAFT BUSHING FRONT
6	101031701	2	螺釘 SM6.35	SCREW SM6.35
7	014050832	2	螺釘 M5×8	SCREW PAN M5×8
8	101032101	1	繞線驅動輪	BOBBIN WINDER DRIVING WHEEL
9	168020901	1	上軸中軸套	BUSHING INTERMSDIATE
10	101033801	1	上軸	MAIN SHAFT
11	168021101	1	上軸后軸套	MAIN SHAFT BUSHING READ
12	115024001	1	油封	OIL SEAL
13	168021302	1	馬達組件	SERVO NOTOR ASSY
14	028050246	3	彈性墊圈	SPRING WASHER
15	025050132	3	墊圈 M5	WASHER M5
16	018501436	3	螺釘 M5×14	SCREW PAN M5×14
17	115024801	2	螺釘SM6.35-40x6	SCREW SM6.35-40X6
18	101032501	1	上軸擋圈	UPPER SHAFT RETAINING RING
19	280002022G	1	手輪(橙色,內孔12)	HANG WHEEL ASM
20	012501032	2	螺釘 M5×10	SCREW PAN M5×10
21	115025401	1	螺釘 SM8.73	SCREW PAN SM8.73
22	012061032	1	螺釘 M6×10	SCREW PAN M6×10
23	101031401	1	挑線杆組件 M	THREAD TAKE-UP LEVER ASM M
24	115201402	1	墊圈	WASHER
25	115024101	1	機針 DBx1 14	NEEDLE DB×1 #14
26	101041101	1	針杆過線環	NEEDLE BAR THREAD GUIDE
27	101040403	1	針杆	NEEDLE BAR
27	101040403H	1	針杆(厚料)	NEEDLE BAR
28	101041001	1	支針螺釘 SM3.18	SCREW PAN SM3.18
29	101030601	1	挑線杆防油套	THREAD TAKE-UP OIL SLEEVE
30	081004870	1	O型圈6.5x1.5	O-RING 6.5X1.5
31	101034201	1	油量偏心銷	OIL QUANTITY ECCENTRIC PIN
32	101034102	1	上軸油氈	UPPER SHAFT LINOLEUM
33	101032502	1	上軸擋圈	UPPER SHAFT RETAINING RING
34	101011801	1	推板組件	PUSH PLATE ASSEMBLY
35	179023401	1	針板	NEEDLE PLATE
35	17902340H	1	針板 (厚料)	NEEDLE PLATE
36	115023501	2	螺釘SM4.37-40x6	SCREW SM4.37-40X6
37	014770632	2	螺釘SM6.35-40x6	SCREW SM6.35-40X6
38	991002028	1	聯軸器A	CONNECT BLOCK A
39	991002030	1	聯軸器B	CONNECT BLOCK B
40	M140601006	4	聯軸器螺釘	SCREW M6x6

<div>SIRUBA</div> <div>PARTS LIST</div>	Series	Parts Group	Subclass Remark	Page
	DL7200D-NM1	03		1 / 1
				Date
				2024/06/21



SiRUBA SEQUENCE LIST		Series		Parts Group	Subclass Remark	Page
		DL7200D-NM1		03		1 / 1
						Date
						2024/06/21
序號	物料號	數量	物料名稱	Deacription		
1	101054501	1	螺釘 SM3.57	SCREW SM3.57		
2	101054601	1	墊圈3.7	WASHER 3.7		
3	168030301	1	抬壓腳扳手	HAND LIFTER		
4	081004070	1	O型圈 P4	RING P4		
5	102050601	1	抬壓腳凸輪	PRESS FOOT LIFTER CAM ASM		
6	101052001	2	前杠杆螺紋銷	LINK SHAFT		
7	101052101	2	防油橡膠墊（薄）	WASHER		
8	168031001- 1	1	抬壓腳前杠杆	HANK LIFTER LINK		
9	167034401	1	抬壓腳拉杆	LIFTING LEVER LINK		
10	048050342	3	卡簧 E5	SNAP RING E5		
11	101056301	1	墊圈 6.35	WASHER 6.35		
12	115034301	2	軸位螺釘 SM4.76	SCREW SM4.76		
13	115034501	1	軸位螺釘 SM6.35	SCREW SM6.35		
14	167052401	1	抬壓腳后杠杆	LEVER AFTER LIFTING THE PRESSER FOOT		
15	168031501	1	調壓螺釘組件	PRESSURE REGULATING BOL		
16	101050301	1	調壓導杆	PRESSER GUIDE BAR		
17	125050401	1	調壓簧	PRESSER SPRING		
18	152305401	1	壓杆導架	NEEDLE BAR GUIDE BAACKET		
19	014770632	1	螺釘 SM6.35	SCREW SM6.35		
20	101050901	1	壓杆套防油圈	SHOCK PAD		
21	152305501	1	壓杆襯套	PRESSER BAR BUSHING LOWER		
22	152205501	1	壓杆	PRESSER BAR		
23	115031001	1	螺釘 SM3.57	SCREW SM3.57		
24	101051301	1	護指器	FINGER GUARD		
25	996004009	1	壓腳	MPRESSER FOOT		
25	996004009H	1	壓腳(厚料)	MPRESSER FOOT		
26	168032701	1	抬壓腳凸輪	HAND LIFTER CAM		
27	014600832	2	螺釘 M6×8	SCREW PAN M6×8		
28	018601232	1	螺釘 M6×12	SCREW PAN M6×12		
29	169034001	1	軸承	BEARING		
30	168033101	1	抬壓腳曲柄軸	PRESSER FOOT CRANK SHAFT		
31	025060236	1	平墊圈6	FLAT WASHER 6		
32	168033201	1	抬壓腳驅動曲柄	OT DRIVING CRANK		
33	021600306	1	螺母 M6×0.75	NUT M6×0.75		
34	012500632	2	螺釘 M5×6	SCREW PAN M5×6		
35	168033501	1	曲柄軸擋圈	SET SCREW COLLAR		
36	168033601	1	膝控提升杆橡皮塞	RUBBER CAP		
37	168033701	1	抬壓腳頂杆	CONNECTING ROD VERTICAL		
38	115034201	1	抬壓腳減震墊	CUSHION		
39	152304201	1	壓腳升降板	PRESSER FOOT LIFTING PLATE		
40	168031301	1	軸位螺釘SM4.76x32	AXIS SCREW SM4.76X32		
41	168033801-1	1	壓腳复位簧	DEPRESSED FOOT RESET SPRING		

SIRUBA PARTS LIST	Series	Parts Group	Subclass Remark	Page
	DL7200D-NM1	04		1 / 1
				Date
				2024/06/21



SiRUBA SEQUENCE LIST		Series		Parts Group		Subclass Remark		Page	
		DL7200D-NM1		04				1 / 1	
								Date	
								2024/06/21	
序號	物料號	數量	物料名稱		Deacription				
1	018501636	1	螺釘 M5×16		SCREW PAN M5×16				
2	168040201	1	連杆銷		STUD				
3	168040301	1	倒縫連杆		F- REGULATOR CONNECT ROD				
4	014680632	1	螺釘 SM4.37-40x6		SCREW PAN SM4. 37- 40x6				
5	168040501	1	倒縫曲柄		I NVERTED CAANK				
6	168040602	1	倒縫步進電機		BACKSEWING STEPPING MOTOR				
7	018401436	4	螺釘 M4×14		SCREW PAN M4×14				
8	101061501	1	擺動板座左銷		ADJUSTING LINK FULCRUM SHAFT				
9	014760832	2	螺釘 SM5.95		SCREW PAN SM5. 95				
10	101061801	2	擺動板連接銷		SWING PLATE CONNECTING PIN				
11	168041101	1	切換器		LEVEL FEED REGULATOR				
12	101064102	1	擺動板套件		SWING PLATE KIT				
13	168041301	1	切換器右銷		ADJUSTING LINK FULCRUM SHAFT				
14	125013001	2	孔塞15.2		HOLE PLUG 15.2				
15	101060901	1	送料連杆銷		WALKING FOOT PIN				
16	101022801	5	螺釘 SM3.57		SCREW PAN SM3. 57				
17	152303101	1	針送布下曲柄		Needle feeding lower crank				
18	101063501	2	螺釘 SM4.76x28		SCREW PAN SM4. 76x28				
19	101063401	1	送料曲柄銷		WALKING FOOT PIN				
20	101061101	1	軸位螺釘SM7.14x28		AXIS SCREW SM7. 14x28				
21	101060102	1	連杆組件 H		CONNECTING ROD ASM				
22	101063601	1	抬牙后曲柄		READ CRANK ASM				
23	101063701	1	螺母 SM5.95		NUT SM5. 95				
24	048140142	2	擋圈 C14		RING C14				
25	125064301	2	油封		OIL SEAL				
26	168042601	1	送布軸		FEED ROCKER SHAFT				
27	101063101G	1	送布軸前軸套		FEED ROCKER SHAFT METAL				
28	101063001	4	螺釘 SM6.35		SCREW PAN SM6. 35				
29	101062901	2	送布軸擋圈		THRUST COLLAR				
30	168043001	2	送布軸中套		FEED ROCKER SHAFT METAL				
31	101062101	1	牙架組件		TOOTH FRAME COMPONENTS				
32	168043901	1	抬牙軸		LIFT THE TOOTH SHAFT				
33	048050342	2	卡簧 E5		COIL SPRING E5				
34	115047001	2	螺釘 SM3.18		SCREW PAN SM3. 18				
35	179060101	1	送料牙		FEED DOG				
	179060101H	1	送料牙 (厚料)		FEED DOG				
36	101062701	1	螺釘 SM5.95		SCREW PAN SM5. 95				
37	169041101	1	油封		OIL SEAL				
38	991005054	1	抬牙叉		Driving shaft crank asm.				
39	S074374011	1	抬牙叉螺釘		Screw 11/64×40 L=10.5				
40	152303201	2	驅動下曲柄螺釘		Screw SM7.14				
41	115011001	1	孔塞10.5		HOLE PLUG 10.5				
42	028040246	4	彈簧墊圈T4		SPRING WASHER T4				
43	025040132	4	平墊圈4		FLAT WASHER 4				
44	115082801	4	油氈		LINOLEUM				
45	101062601	1	螺釘SM4.37-40x7		SCREW SM4.37-40X7				
46	101060601	2	螺釘SM6.35-40x11		SCREW SM6.35-40X11				
47	101063102	1	抬牙軸前軸套		FRONT BUSHING OF LIFTING SHAFT				

SIRUBA PARTS LIST	Series	Parts Group	Subclass Remark	Page
	DL7200D-NM1	05		1 / 1
				Date
				2024/06/21

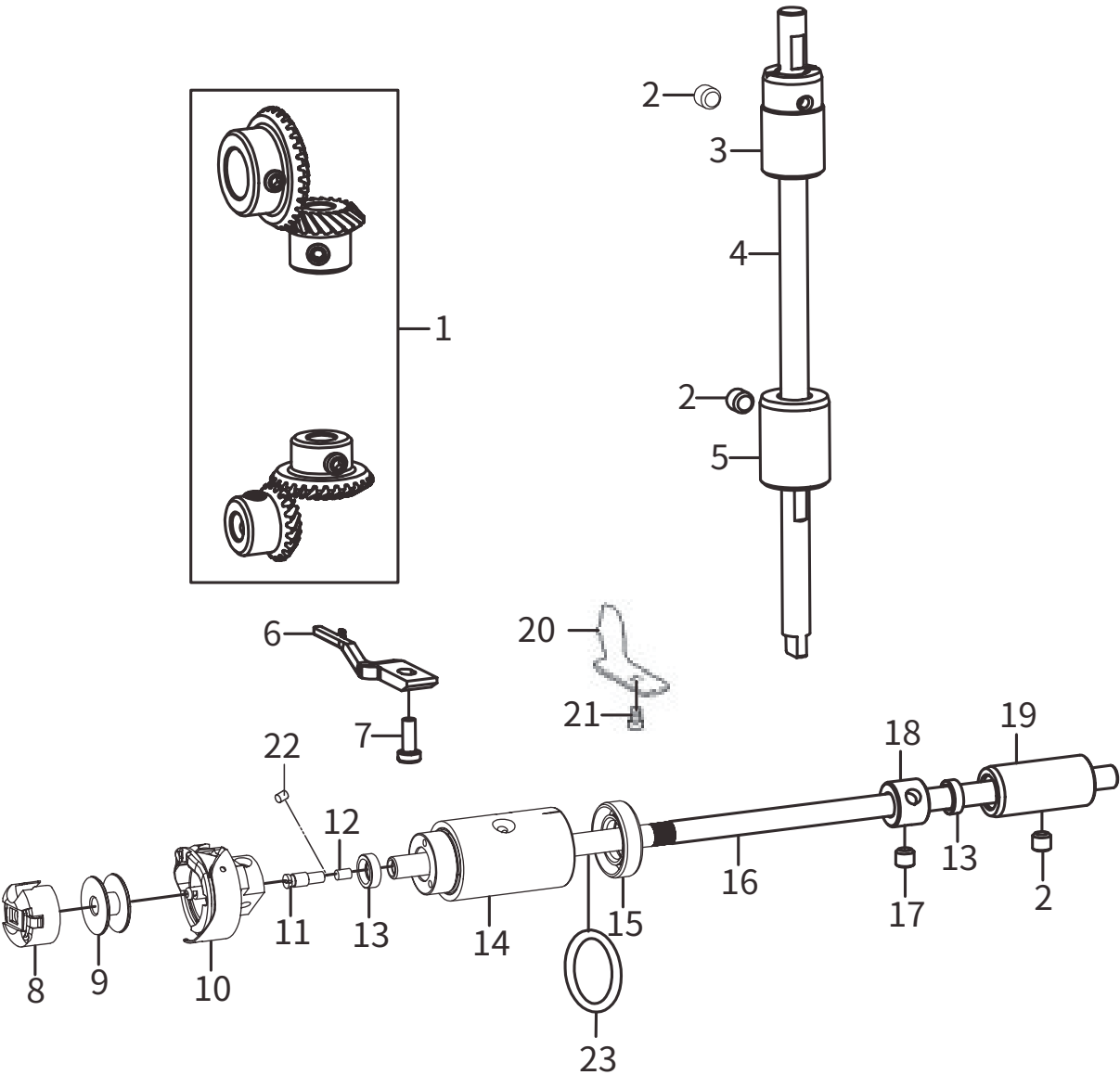
A

B

C

D

E



SIRUBA PARTS LIST	Series	Parts Group	Subclass Remark	Page
	DL7200D-NM1	07		1 / 1
				Date
				2024/06/21

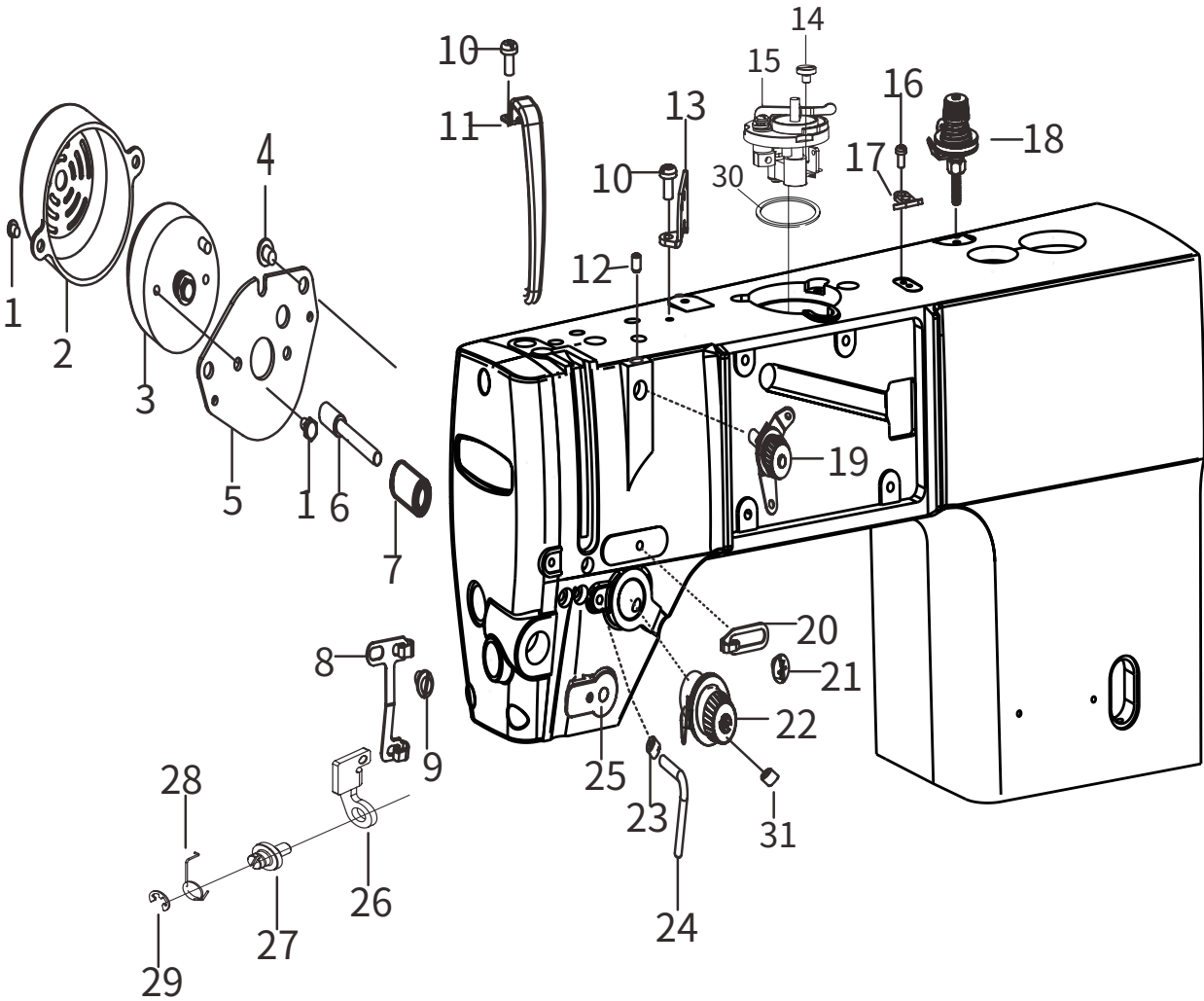
A

B

C

D

E



SIRUBA PARTS LIST	Series	Parts Group	Subclass Remark	Page
	DL7200D-NM1	08		1 / 1
				Date
				2024/06/21

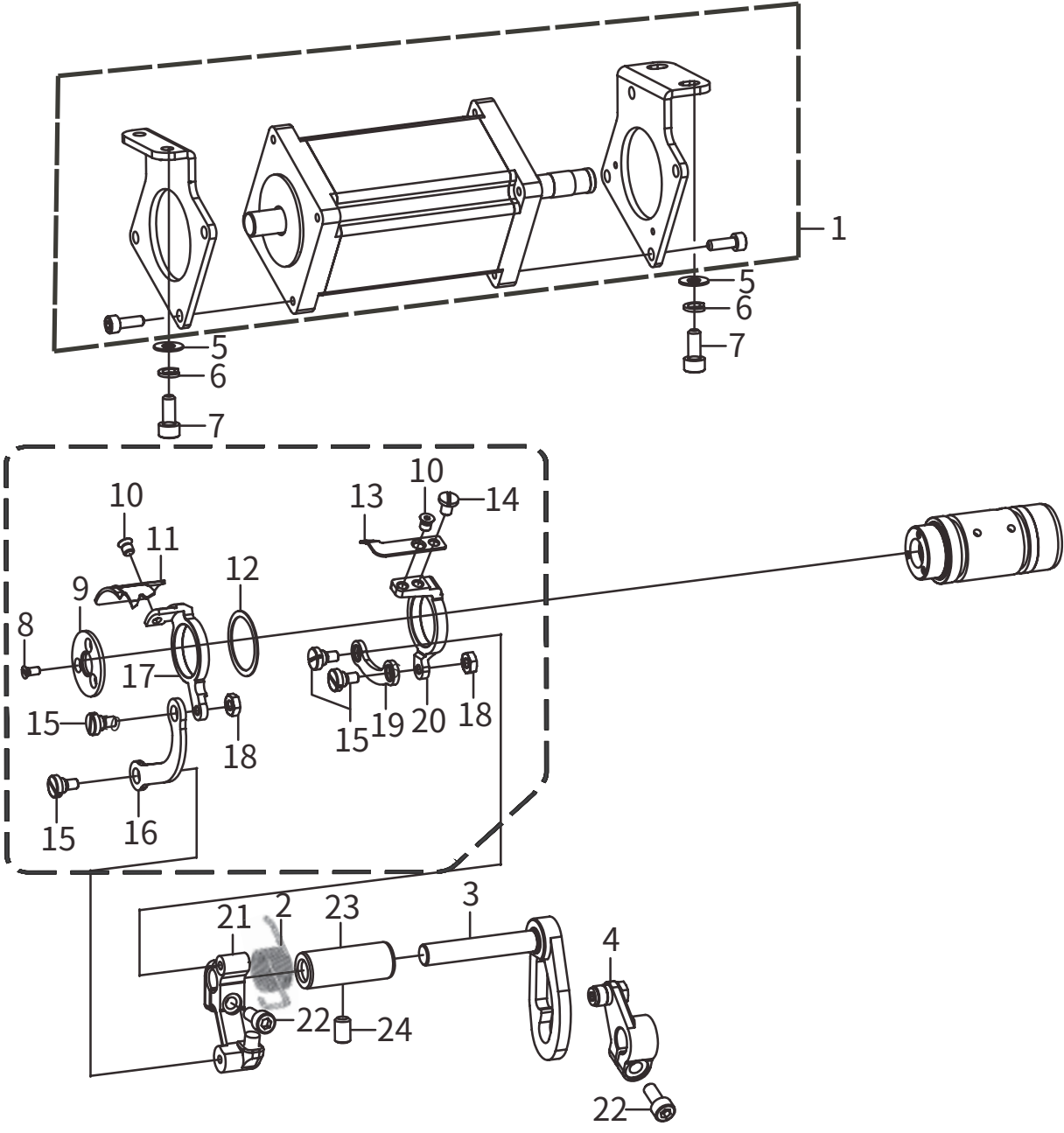
A

B

C

D

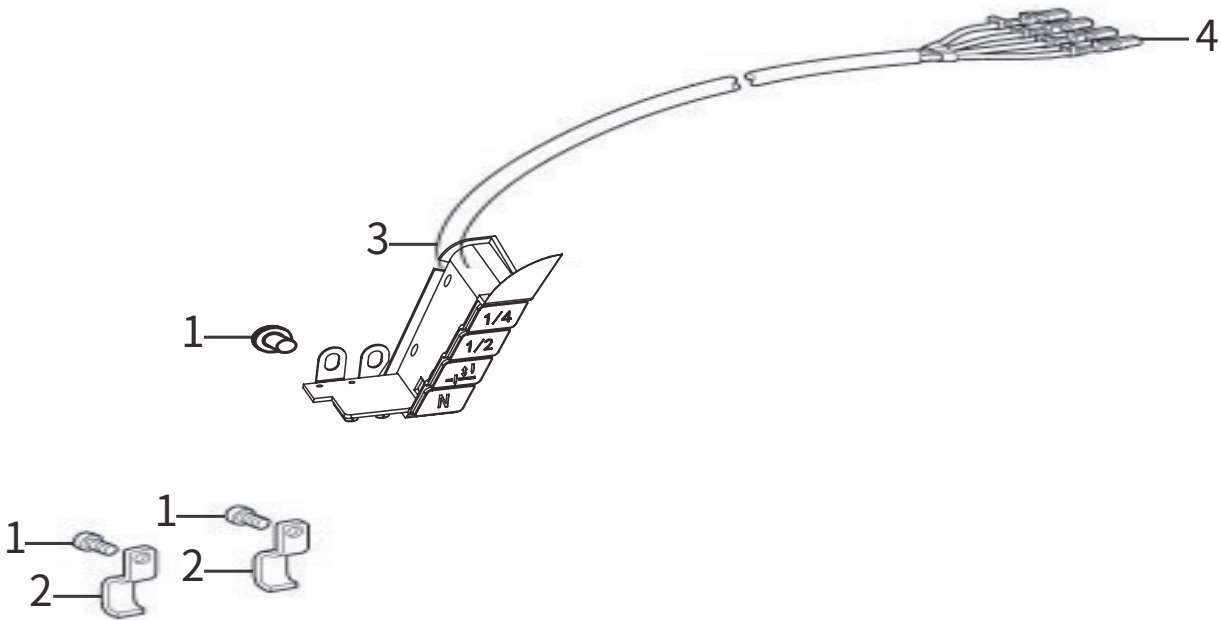
E



SIRUBA PARTS LIST	Series	Parts Group	Subclass Remark	Page
	DL7200D-NM1	09		1 / 1
				Date
				2024/06/21

A

B

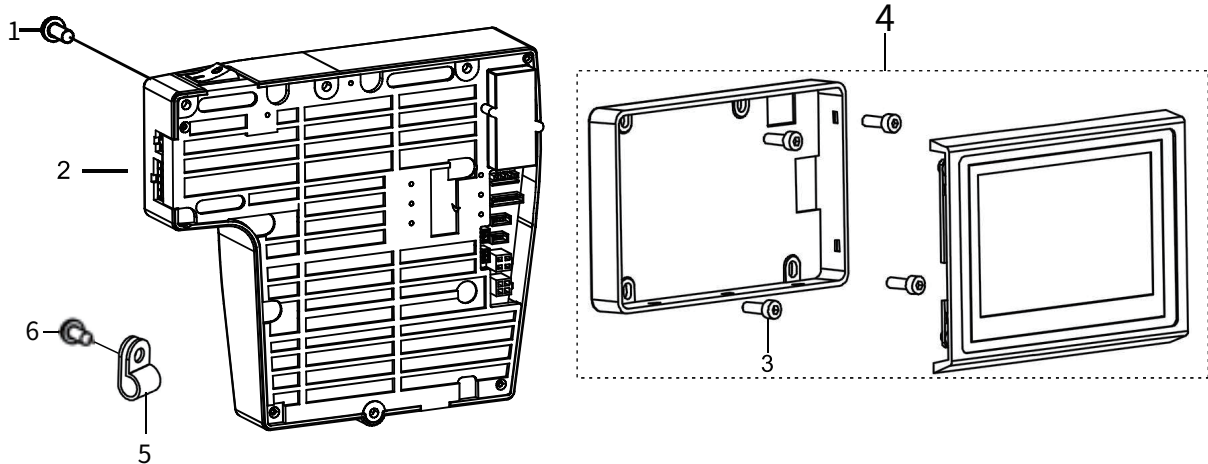


C

SIRUBA PARTS LIST	Series	Parts Group	Subclass Remark	Page
	DL7200D-NM1	10		1 / 1
				Date
				2024/06/21

A

B



SIRUBA SEQUENCE LIST	Series	Parts Group	Subclass Remark	Page
	DL7200D-NM1	09		1 / 1
				Date
				2024/06/21

序號	物料號	數量	物料名稱	Deacription
1	062500616	4	螺釘 M5×6	SCREW PAN M5×6
2	115140301	2	電線夾 U2	CORD HOLDER U2
3	288ZS09003	1	倒縫燈開關組件	LED REVERSE SEAM LAMP ASM
4	168090401	1	10P插頭	10P PLUG

9

SIRUBA SEQUENCE LIST	Series	Parts Group	Subclass Remark	Page
	DL7200D-NM1	10		1 / 1
				Date
				2024/06/21

序号	物料號	數量	物料名稱	Deacription
1	S074762820	3	螺釘 SM4.76X28-20	SCREW SM4. 76X28-20
2	288C10002W	1	電控組件	CONTROL BOX ASSY
3	S073574008	4	螺釘 SM3.57X40-08	SCREW SM4. 37X40-6
4	288C10004W	1	控制面板	OPERATION PANEL
5	99100106	1	塑料線夾	CORD HOLDER
6	S074762809	1	螺釘 SM4.76X28-09	SCREW

10

<div>SIRUBA</div> <div>PARTS LIST</div>	Series	Parts Group	Subclass Remark	Page
	DL7200D-NM1	11		1 / 1
				Date
				2024/06/21

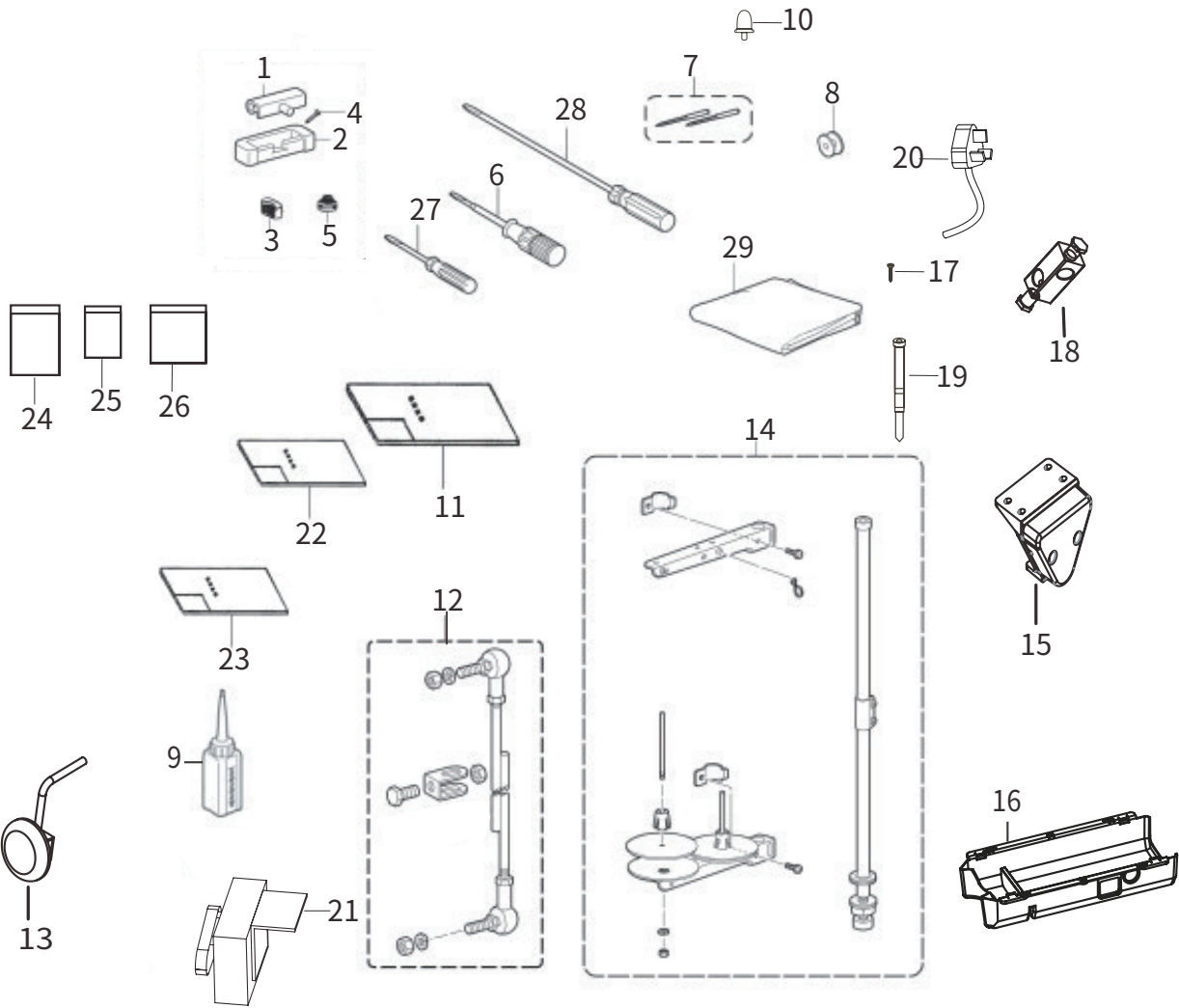
A

B

C

D

E



SiRUBA SEQUENCE LIST		Series		Parts Group	Subclass Remark	Page
		DL7200D-NM1		11		1 / 1
						Date
						2024/06/21
序號	物料號	數量	物料名稱	Deacription		
1	115150401	2	機頭鉸鏈	HEAD HINGE		
2	101120501	2	機頭鉸鏈套	HEAD HINGE SLEEVE		
3	125120601	2	頭部防震墊	HEAD SHOCK PAD		
4	5050111	4	釘	NAIL		
5	125120801	2	頭部防震墊	HEAD SHOCK PAD		
6	115151701	1	螺絲刀(中)	SCREWDRIVER (MEDIUM)		
7	115024112	4	機針DB×114	NEEDLE DB×114		
8	115151001	3	梭芯	BOBBIN		
9	115024113	1	中號油壺	MEDIUM OIL CAN		
10	168111401	1	機頭撐杆	HEAD SUPPORT		
11	7200D11011	1	零件手冊	PARTS MANUAL		
12	115151901	1	連杆組件	CONNECTING ROD ASSEMBLY		
13	125104001	1	膝控組件	KNEE CONTROL COMPONENTS		
14	115151401	1	線架組件2DR	WIRE RACK ASSEMBLY 2DR		
15	169050101	1	電子膝靠組件	ELECTRONIC KNEE REST		
16	125103101	1	油盤	OIL PAN		
17	152208101	12	木螺釘ST4.2X25	WOOD SCREW ST4.2X25		
18	125104101	1	膝控接頭	KNEE JOINT		
19	5040104	3	扎帶	TIE		
20	125122801	1	電源線	POWER CABLE		
21	115152001	1	調速器	GOVERNOR		
22	6050169	1	電控說明書	ELECTRIC CONTROL MANUAL		
23	6050101	1	使用說明書	USER'S GUIDE		
24	115160601	1	自封袋	ZIPLOCK BAG		
25	115160701	1	自封袋	ZIPLOCK BAG		
26	115160801	1	自封袋	ZIPLOCK BAG		
27	115151601	1	螺絲刀(小)	SCREWDRIVER (SMALL)		
28	115151801	1	螺絲刀(大)	SCREWDRIVER (LARGE)		
29	6040101	1	機頭罩	HOOD		

<div>SIRUBA</div> <div>PARTS LIST</div>	Series	Parts Group	Subclass Remark	Page
	DL7200D-NM1	12		1 / 1
				Date
				2024/06/21

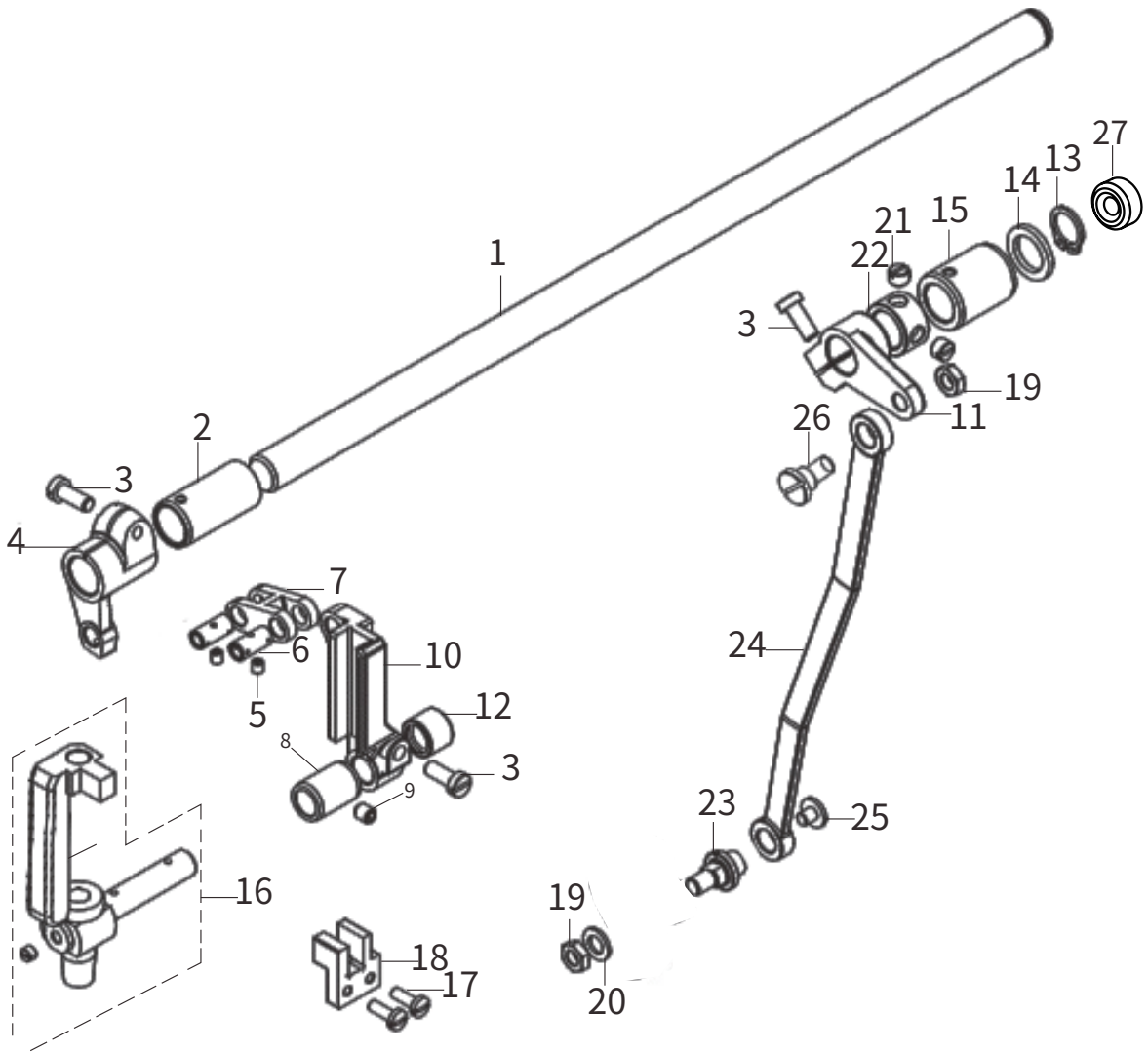
A

B

C

D

E



SiRUBA SEQUENCE LIST		Series	Parts Group	Subclass Remark	Page
		DL7200D-NM1	12		1 / 1
					Date
					2024/06/21
序號	物料號	數量	物料名稱	Deacription	
1	152300101	1	針送布襪動軸	NEEDLE FEEDING SWNG SHAFT	
2	152300401	1	針送布襪動前軸套	NEEDLE FEEDING SWNG FRONT BUSH NG	
3	152300301	3	螺釘SM4.76-28X12	SCREW SM. 76-28×12	
4	152300201	1	針杆襪動曲柄	NEEDLE BAR SWNG CRANK	
5	152300701	2	螺釘SM3.57-40×4	SCREW SM. 57-40×4	
6	152300501	2	針杆襪動連杆銷	NEEDLE BAR SWNG LINK PIN	
7	152300601	1	針杆襪動連杆	NEEDLE BAR SWNG LINK	
8	152302201	2	針杆襪動架軸套	NEEDLE BAR SWNG FRAME BUSH NG	
9	012501032	1	螺釘M5×10	SCREW M5×10	
10	152301901	1	針杆導向滑動曲柄組件	NEEDLE BAR GUIDE SLIDING CRANK ASM	
11	152302801	1	針送布驅動上曲柄	NEEDLE FEED DRIVE UPPER CRANK	
12	167301801	1	外圈滾針軸承BK0910	OUTER RING NEEDLE ROLLER BEARINGS BK0910	
13	048120142	1	軸用彈性擋圈12	CLIP FOR SHAFT 12	
14	152301101	1	墊圈12.7	WASHER 12.7	
15	152301001	1	針送布襪動后軸套	SHAFT SLEEVE AFTER NEEDLE FEEDING SWNG	
16	152302501	1	針杆襪動架組件	NEEDLE BAR SWNG FRAME ASSEMBLY	
17	115031001	2	螺釘SM3.57-40X10	SCREW SM. 57-40X10	
18	152302401	1	襪動架導軌	SWNG RACK RAIL	
19	152203201	2	螺母SM5.95X28	NUT SM. 95X28	
20	152203101	1	墊圈6.35	WASHER 6.35	
21	152300901	2	螺釘1/4-40×4.5	SCREW 1/4-40×4.5	
22	152300801	1	擋圈12.7	RETAINING RING 12.7	
23	152301501	1	針送布驅動連杆接頭	NEEDLE FEED DRIVE LINK CONNECTOR	
24	152301301	1	針送布驅動連杆	NEEDLE FEED DRIVE LINK	
25	152302701	1	螺釘SM4.37-40×5	SCREW SM. 37-40×5	
26	152301201	1	驅動連杆軸位螺釘	DRIVE CONNECTING ROD SHAFT SCREW	
27	991001014	1	橡皮塞	RUBBER	



高林股份有限公司
KAULIN MFG. CO., LTD.

由於對產品的改良及更新，本產品零件圖及外觀的修改恕不事先通知！
The specification and/or appearances of the equipment described in this parts list are
subject to change because of modification which will without previous notice.
BYL-13S43.JUN.2024