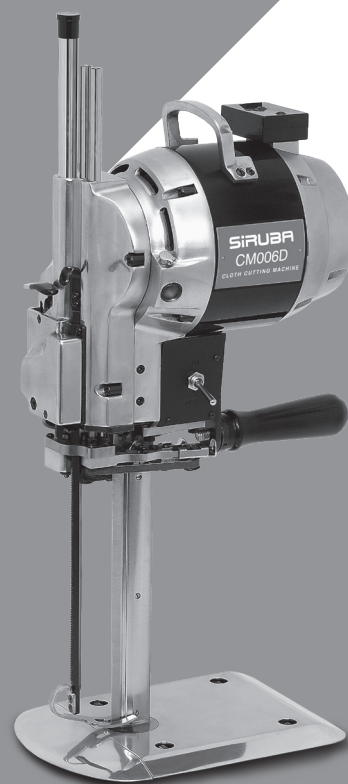


SIRUBA

零件圖

PARTS LIST

■ CM006D



CE

使用前请仔细阅读

BEFORE OPERATING MACHINE, READ THIS PAGE CAREFULLY.

使用前应向油杯内加油；将电机后的旋钮推入转几转，刀片应能上下灵活移动。

Before operating the motor, be sure that electric supply voltage and current are the same as stamped on the nameplate. Fill oil cup. Push in turning knob and turn the machine over a few revolutions by hand to see if the knife moves easily.

维护 CARE OF MACHINE

- (1) 每星期两次用风管或风箱把马达和磨刀器上的绒毛吹掉。
- (2) 每星期一次取下前盖将丝杆上的绒毛弄干净。
- (3) 每天至少一次取下刀片，用槽子清洗器将刀槽清理干净。
- (4) 请勿向底板滚轮加油。
- (5) 若轮子滚不动，请拆下清洗。

- (1) Use air hose or bellows with proper eye shields and blow lint out of motor and sharpener twice a week.
- (2) Remove cover over cam and clean out lint around screw mechanism in sharpener once a week.
- (3) Remove knife and clean slides with slot cleaner at least once a day
- (4) To prevent undue accumulation of lint, Do not oil plate rollers.
- (5) If rollers stick, remove from plate and wash in cleaning solvent.

注意 WARNING



当心刀片快口伤人。操作时请使用木手柄推动机器，搬动机器时，请使用提手柄。

This machine is equipped with a sharp knife, Keep hands away from the knife area at all times. Use control levers and handles only when operating or handling machine

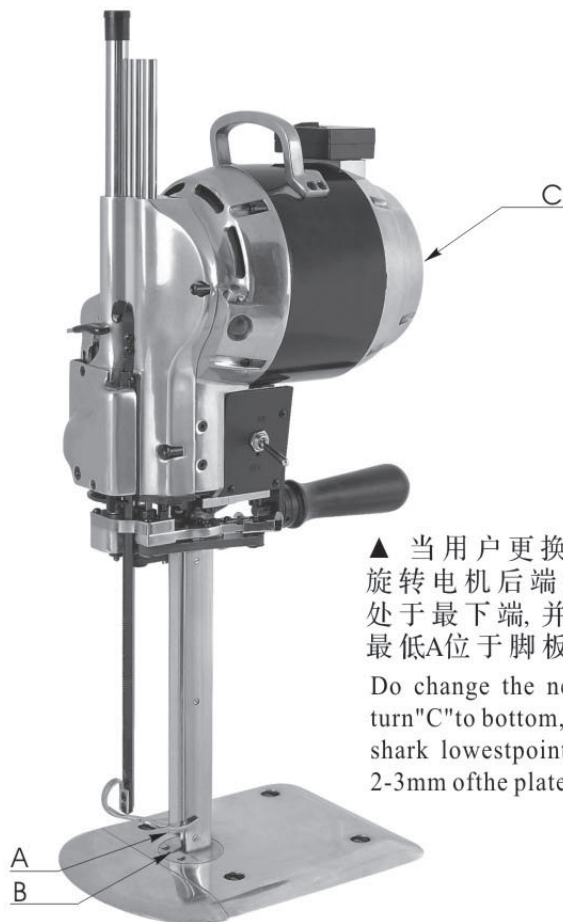
未装刀片时切勿磨刀，以免造成机器损坏。

Do not operate sharpener without knife in machine or the sharpener will be damaged.

磨刀时 TO SHARPEN THE KNIFE

请放下压脚，用力慢慢地按下磨刀手柄。如果轧死，请抬起拨叉，重新再来几次后，你便会知道怎样的轻重最适合。

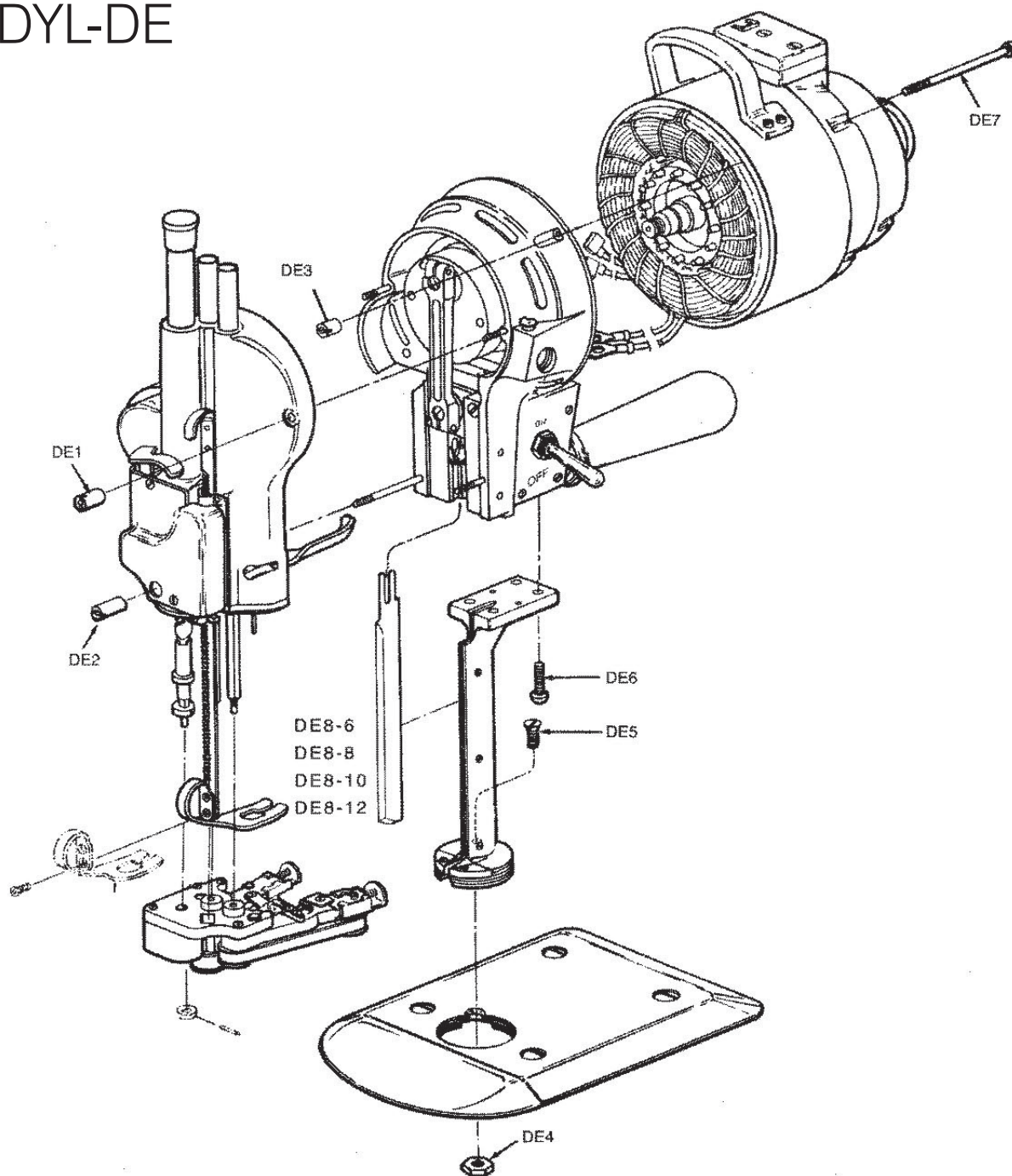
Take the machine out of the lay. Drop pressure foot by means of pressure foot lever located next to machine operating handle. Press release lever downward with a slow, firm pressure to engage sharpening mechanism. Too fast lever action may cause lever to lock. If this occurs, lift latch lever and start Lever. After a few tries you will feel correct operating pressure.



▲ 当用户更换新刀片时，应该旋转电机后端的旋钮C使刀片处于最下端，并使刀锋最低点最低A位于脚板B下2~3mm。

Do change the new knife, shall turn "C" to bottom, and make knife sharp lowest point "A" to below 2-3mm of the plate "B"

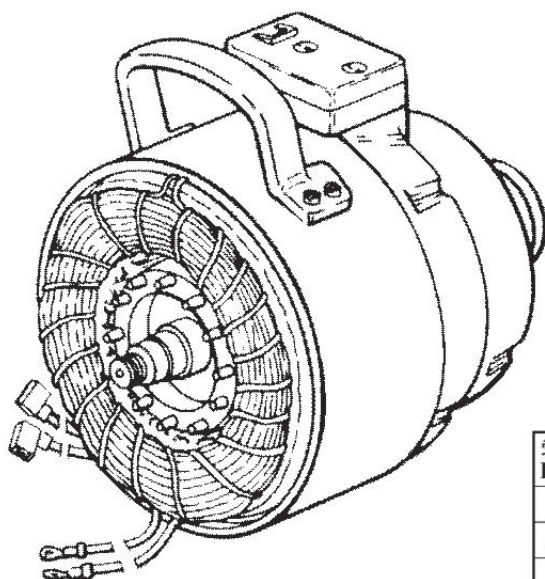
DYL-DE



零件号 Part N0.	名称	Description	数量 No.Req'd
DE1	专用短螺母	Sharpener Hold-Down Nut	3
DE2	专用长螺母	Sharpener Hold-Down Nut	1
DE3	专用螺母	Front-to-Rear Bearing Nut	4
DE4	螺母	Plate Bolt Nut	1
DE5	立柱固定螺钉	Standard-to- Bearing Screw	1
DE6	立柱螺钉	Front-to-Rearing-Bearing Screw	4
DE7	螺钉	Screw	4
DE8	刀片	Knife	1

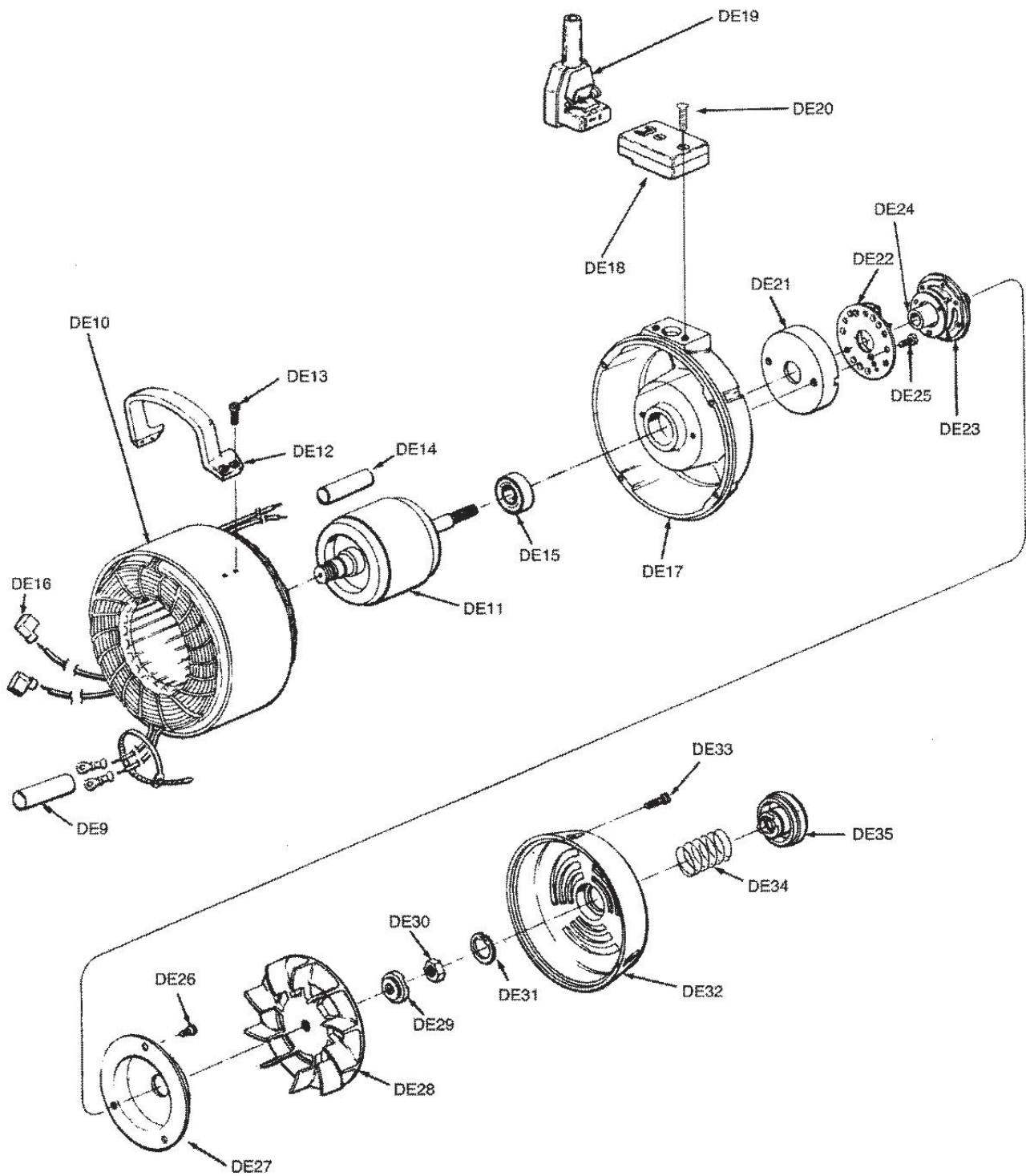
DYL-DE

单相马达组 *Single-phase Motor Assemblies*



零件号 Part No.	名称	Description	数量 No. Req'd
DE9	绝缘器	Terminal Wire Tubing	1
DE10	电机定子组件	Stator with Band	1
DE11	电机转子组件	Rotor and shaft	1
DE12	提手柄	Carrying Handle	1
DE13	提手柄螺钉	Screw	4
DE14	引线管	Terminal wire Tubing	1
DE15	单列向心球轴承	Rear Ball Bearing	2
DE16	线耳	Terminal	2
DE17	后机匣	Rear Bearing House	1
DE18	插头组件	Terminal Block	1
DE19	电源插头组件	Attachment Plug	1
DE20	插头组件螺钉	Screw	2
DE21	离心开关罩	Cutout switch Mount	1
DE22	离心开关切断器	Automatic Cutout	1
DE23	离心开关组件	Automatic Cutout Switch	1
DE24	离心开关轴套	Shaft Cover For Cutout	1
DE25	离心开关罩螺钉	Screw	2
DE26	离心开关盖螺钉	Screw	2
DE27	离心开关盖	Cover for Cutout	1
DE28	风轮	Rotor Fan	1
DE29	止动垫圈	Leading spring Washer	1
DE30	电机转子圈	Clutch Nut	1
DE31	轴用弹性挡圈	Retaining Ring	1
DE32	风轮盖	Fan Cover	1
DE33	风轮盖螺钉	Screw	2
DE34	弹簧	Clutch Spring	1
DE35	旋钮	Turning Knob	1

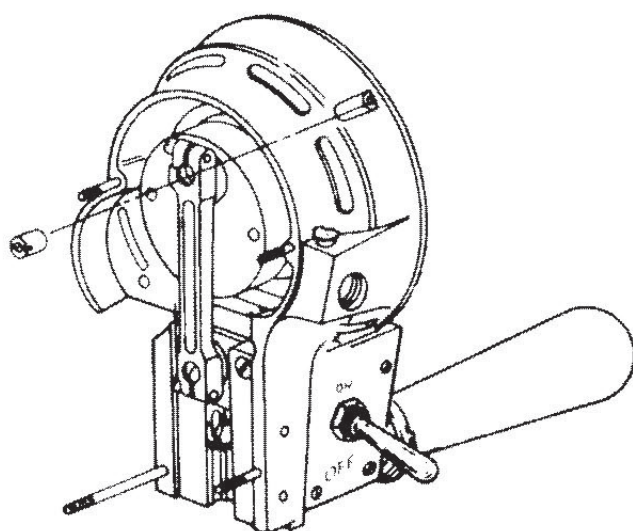
DYL-DE



DYL-DE

前轴承套组

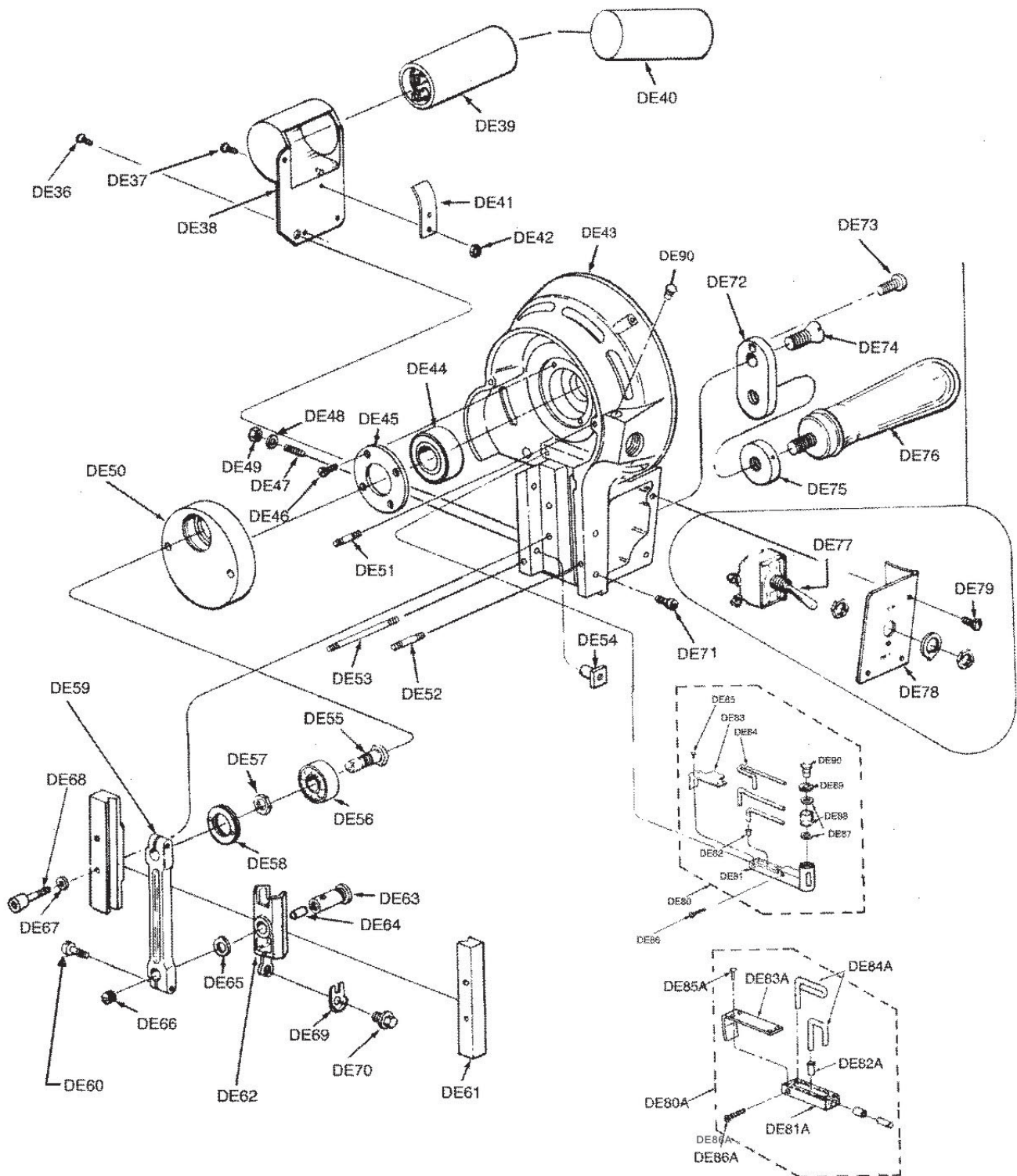
Front Bearing Housing Assembly



零件号 Part No.	名称	Description	数量 No. Req'd
DE36	电容器罩螺钉	Screw	6
DE37	电容压板螺钉	Screw	1
DE38	电容器罩	Capacitor Cover	1
DE39	启动电容	Capacitor	1
DE40	电容器外套	Cover for Capacitor	1
DE41	电容压板	Spring for Capacitor	1
DE42	六角螺母	Shaft Lock Nut	1

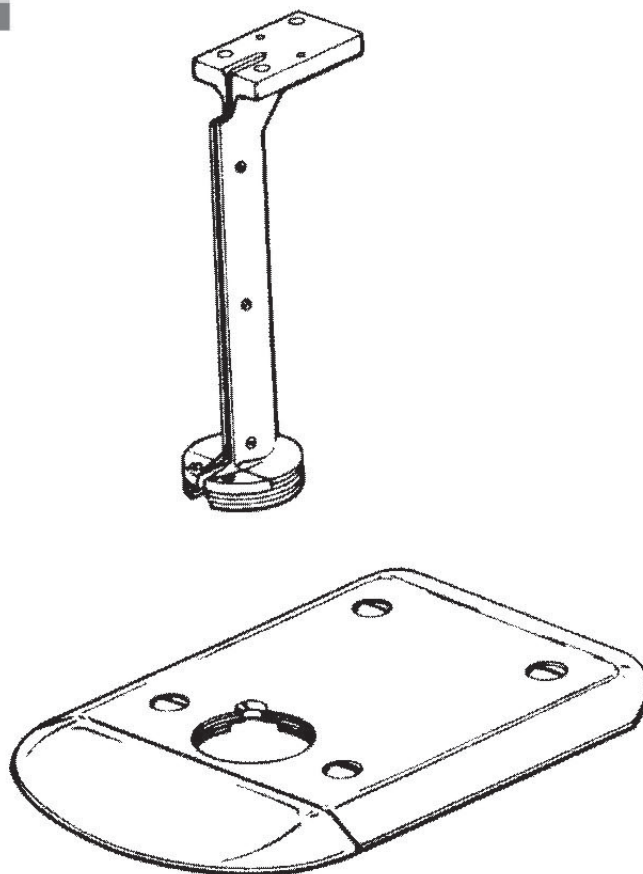
零件号 Part No.	名称	Description	数量 No. Req'd
DE43	前机匣	Front Bearing Housing	1
DE44	单列向心球轴承	Bearing	1
DE45	前机匣轴承挡圈	Front Ball Bearing Retainer	1
DE46	轴承挡圈螺钉	Screw	4
DE47	内六角平端紧定螺钉	Screw	3
DE48	垫圈	Washer	9
DE49	螺母	Nut	3
DE50	偏心轮	Crank	1
DE51	双头螺栓	Stud, upper	2
DE52	双头螺栓	Stud, Lower Mounting	1
DE53	双头螺栓	Stud, Lower Mounting	1
DE54	支撑螺套	Guide Adjstment Nut	3
DE55	传动销	Shaft for Ball Bearing	1
DE56	单列向心球轴承	Seated Crank Ball Bearing	1
DE57	传动销螺母	Lock Nut for Shaft	1
DE58	轴承挡圈	Crank Ball Bearing Lock Nut	1
DE59	连杆	Connecting Rod	1
DE60	连杆螺钉	Screw	2
DE61	导轨	H. Guide	1
DE62	中心滑块	Cross Head	1
DE63	从动销	Wrist Pin	1
DE64	油绳	Wrist Pin Felt Pad	1
DE65	垫片	Connecting Rod Washer	1
DE66	半端紧定螺钉	Screw	1
DE67	垫片	Guide Wsher	1
DE68	圆柱头内六角螺钉	Screw	6
DE69	固定刀垫片	Knife Lock Washer	1
DE70	方头螺钉	Screw	1
DE71	圆柱头内六角螺钉	Screw	2
DE72	力板	Handle Bracket	1
DE73	内六角螺钉	Screw	1
DE74	力板螺钉	Screw for Handle Bracket	1
DE75	木手柄锁紧螺母	Operating Handle Lock Nut	1
DE76	木手柄	Operating Handle	1
DE77	电机开关	Switch	1
DE78	开关盖	Switch Base	1
DE79	开关盖螺钉	Screw	3
DE80	油杯组件	Oiling device	1
DE81	油杯座	Oil Tube	1
DE82	空心柳钉	Eyelet	1
DE83	油杯座盖板	Cover for Oil Tube	1
DE84	油绳	Long Wichking	3
DE85	油杯座盖板螺钉	Screw	4
DE86	油杯座螺钉	Screw	2
DE87	密封圈	Circle	2
DE88	油窗	Windows for oil	1
DE89	油杯座盖	Oil tube cover	1
DE90	油杯	Oil Hole Cover	1

DYL-DE



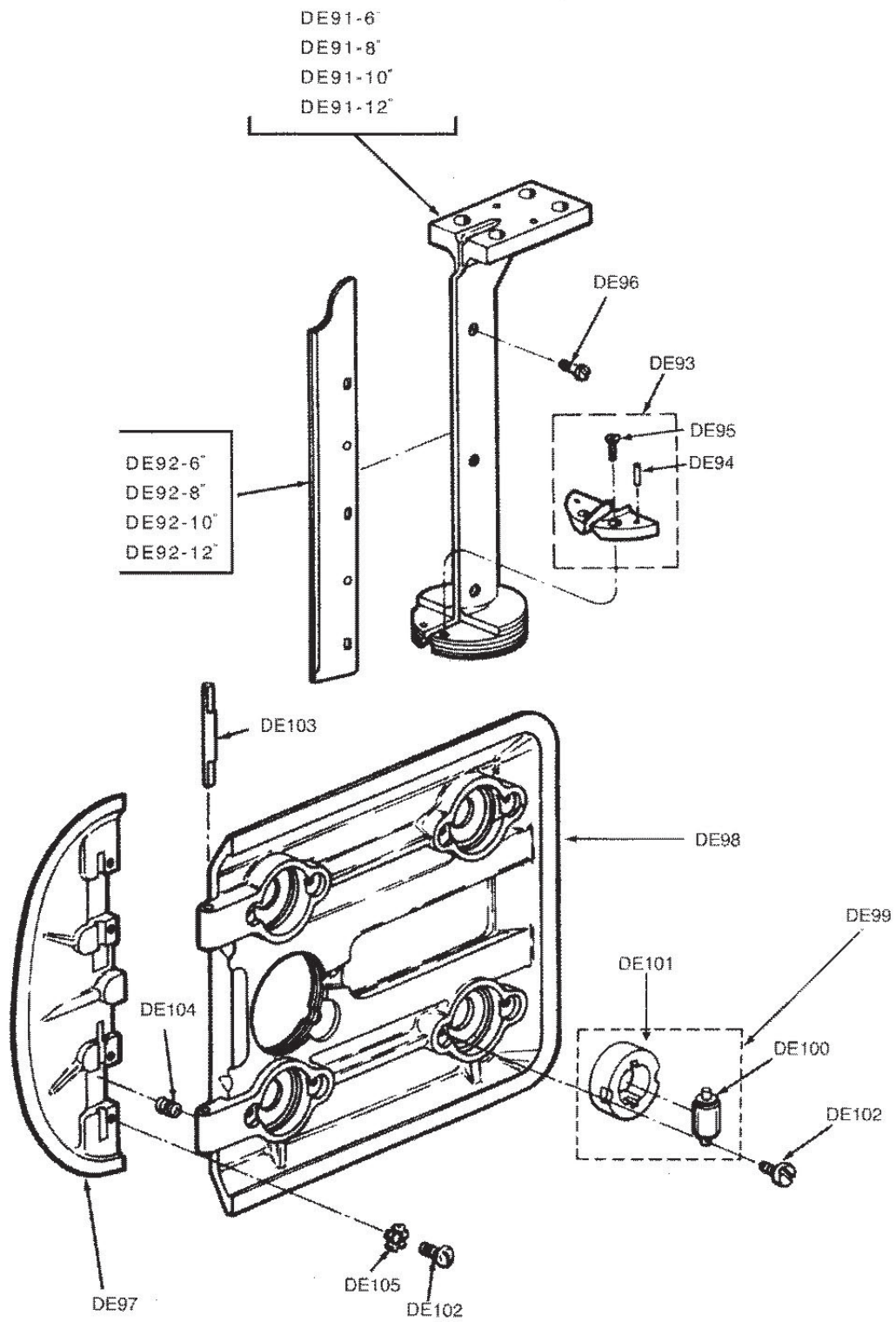
DYL-DE

刀夹底盘组 *Standard and Beseplate Assembly*



零件号 Part No.	名 称	Description	数 量 No.Req'd
DE91	立柱	Standard	1
DE92	刀壳组件	Knife Slide	1
DE93	脚板	Throat Plates	2
DE94	脚板定位销	Taper pin	2
DE95	脚板螺钉	Screw	2
DE96	刀壳螺钉	Screw	3
DE97	导板	Plate Wing	1
DE98	底座	Plate	1
DE99	滚轮组件	Rubber Roller all set	4
DE100	滚轮衬套组件	Roller Shell	4
DE101	橡胶安装座组件	Rubber Mounted Roller	4
DE102	底板压轴螺钉	Clamp Screw for Roller	12
DE103	导板连接轴	Hinge Pin	2
DE104	导板弹簧	Plate Wing Spring	2
DE105	止动垫片	Lock Wsher.#8	2

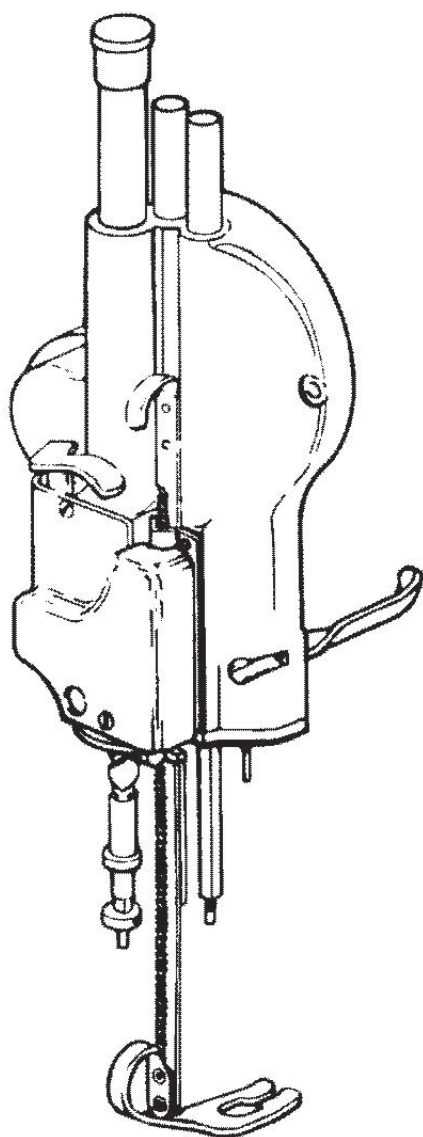
DYL-DE



DYL-DE

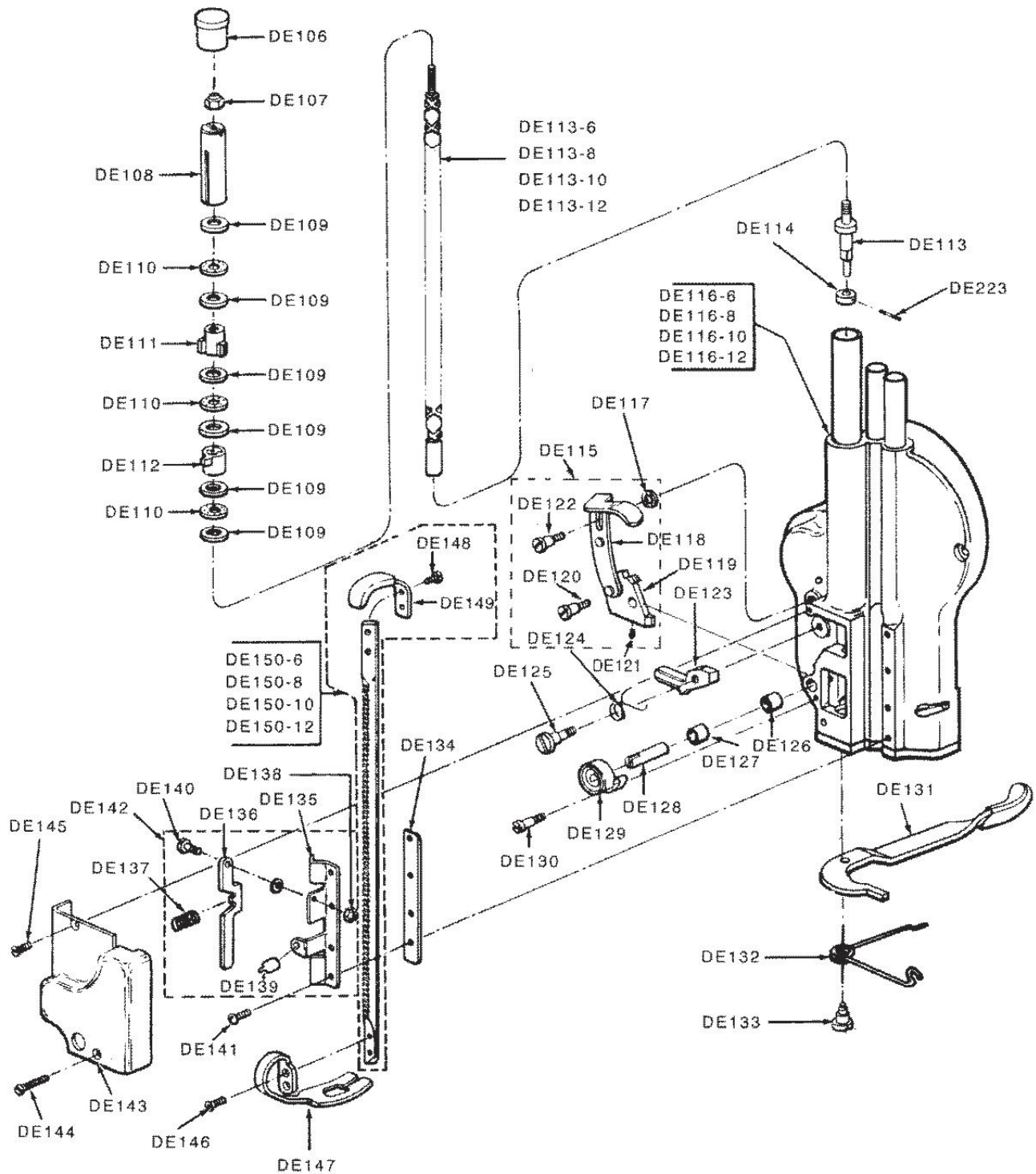
磨刀器组正面

Front Sharpener Housing Assembly



零件号 Part No.	名称	Description	数量 No. Req'd
DE106	塑料帽	Cap of Tube	1
DE107	锁紧螺母	Stop Nut for Screw Shaft	1
DE108	丝杆上螺母	Nut for Screw Shaft	1
DE109	轴承片	Thrust washer for Nuts	3
DE110	轴承组件	Thrust Ball Bearing	3
DE111	左向螺母	L.H.Nut for screw Shaft	1
DE112	右向螺母	R.H.Nut for screw Shaft	1
DE113	双向丝杆	Screw Shaft	1
DE114	双向丝杆挡圈	Collar for Fxtensiom	1
DE115	磨刀手柄组件	Release Lever with Cam	1
DE116	磨刀机匣组件	Sharpener Housing (With Bushings and Tubes)	1
DE117	弹性垫圈	Spring washer for Release Lever	1
DE118	磨刀手柄	Release Lever With Cam	1
DE119	偏心块	Cam	1
DE120	磨刀手柄柳钉	Screw	1
DE121	圆柱端紧定螺母	Set Screw for Cam	1
DE122	磨刀手柄活动螺钉	Screw for Release Lever	1
DE123	拨叉	Latch for Cam	1
DE124	拨叉弹簧	Spring for Latch	1
DE125	拨叉定位螺钉	Screw for Latch	1
DE126	发条销下轴衬	Bearing for Cam Shaft	1
DE127	发条销上轴衬	Bearing for Cam Shaft	1
DE128	发条销	Shaft for Cam	1
DE129	锁紧法条	Cam Spring	1
DE130	发条销限位螺钉	Cam Shaft Spring Screw	1
DE131	压脚放松手柄	Pressure Foot Lever	1
DE132	放松手柄弹簧	Spring for Pressure Foot Lever	1
DE133	放松手柄螺钉	Pressure Foot Lever Screw	1
DE134	扩齿托架垫片	Spacer for Knife Guard Lock Bracket	1
DE135	压脚托架	Knife Guard Lock Bracket Complete	1
DE136	压脚定位板	Lock for Pressure Foot	1
DE137	护齿弹簧	Spring for Knife Guard Lock	1
DE138	锁紧螺母	Nut for pressure Foot Lock	1
DE139	支持桩子	Knife Guard Lock Bracket Only	1
DE140	护齿螺钉	Screw for Knife Guard Lock	1
DE141	压脚托架螺钉	Screw	4
DE142	压脚托架组件	Pressure Foot Lock Bracket Complete	1
DE143	前罩	Cover Over Cam	1
DE144	前罩下螺钉	Screw	1
DE145	前罩上螺钉	Screw	1
DE146	压脚螺钉	Screw for Pressure Foot Shoe	2
DE147	压脚	Pressure Foot shoe	1
DE148	压脚杆提手柄螺钉	Serew	2
DE149	压脚杆提手柄	Lift Handle for Knife Guard Rod	1
DE150	压脚杆	Knife Guard Rod	1

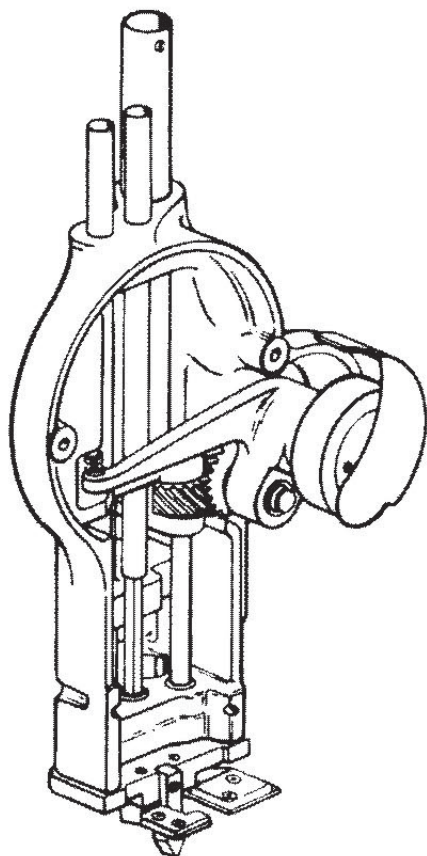
DYL-DE



DYL-DE

磨刀器组正面

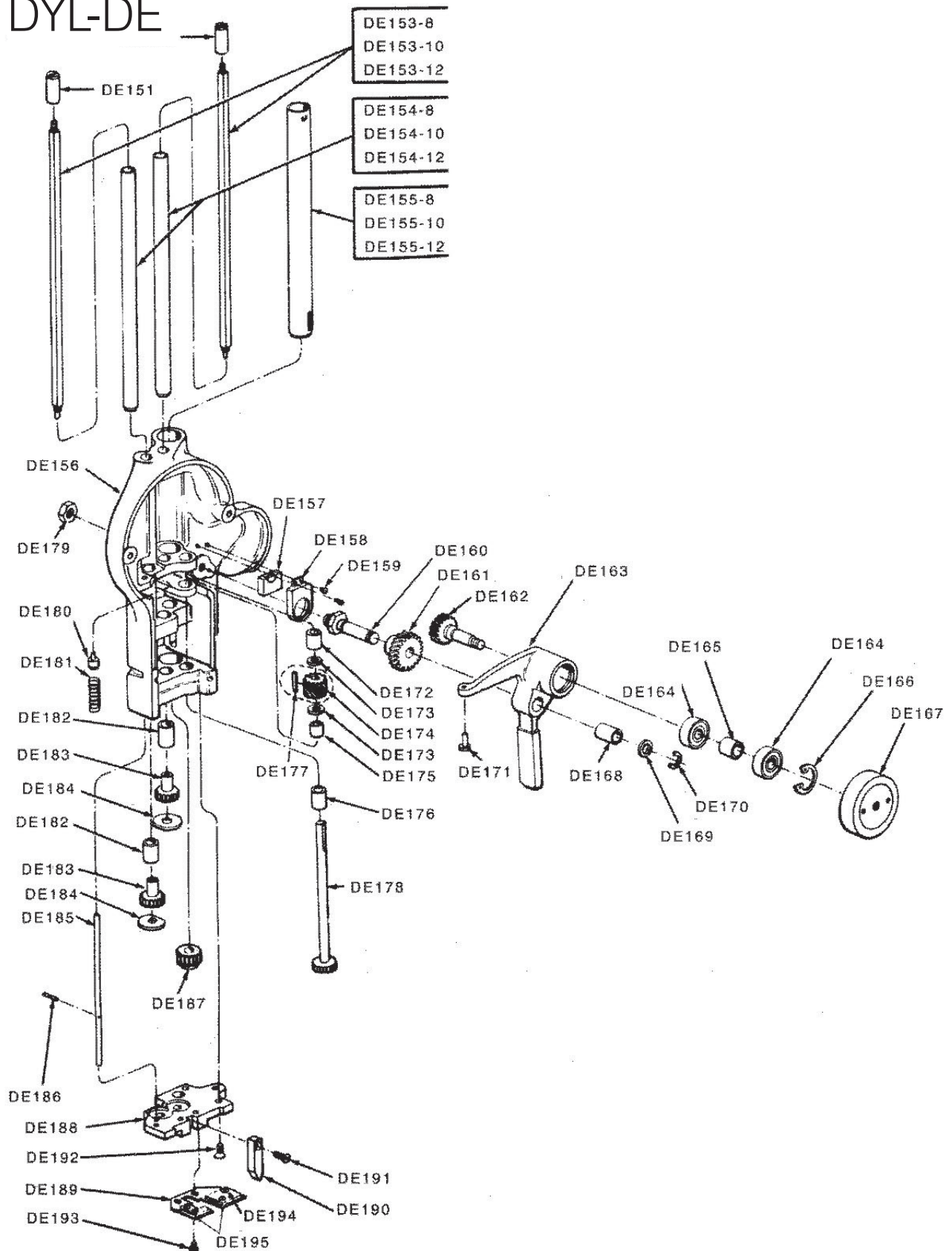
Front Sharpener Housing Assembly



零件号 Part No.	名 称	Description	数 量 No. Req'd
DE151	随动螺母	R..H.Follower Nut	1
DE152	随动左螺母	L.H.Follower Nut	1
DE153	方导杆	Square Shaft	2
DE154	方导杆管套	Tube for Square Shaft	2
DE155	丝杆管套	Tube for Screw Shaft	1
DE156	磨刀机匣	Sharpener Housing	1
DE157	从动斜齿轮油盖毛毡	Felt Pad for Oil Retainer-Idler Gear	1
DE158	从动斜齿轮油盖	Oil Retainer-Idler Gear	1
DE159	斜齿轮油盖螺钉	Screw	2

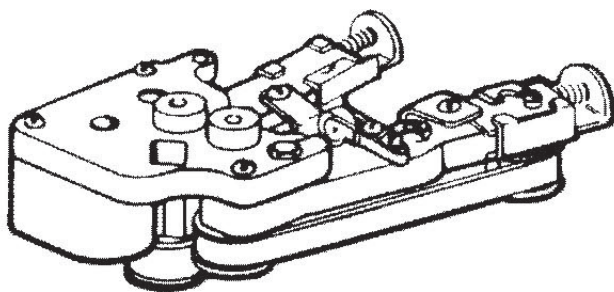
零件号 Part No.	名 称	Description	数 量 No. Req'd
DE160	斜齿轮芯轴	Shaft for Grank	1
DE161	斜齿轮	Idler Gear	1
DE162	斜齿轮轴	Gear and Shaft	1
DE163	斜齿轮传动机匣	Bell Grank	1
DE164	单列向心球轴承	Ball Bearing for Grank	2
DE165	斜齿轮轴衬圈	Spacer for Bell Bearings	1
DE166	孔用弹性挡圈	Retaining Ring for Bell Crank	1
DE167	摩擦轮组件	Drive Pulley with Driver	1
DE168	斜齿轮芯轴衬套	Bearing for Bell Grank	1
DE169	垫片	Washer for Shaft	1
DE170	轴用弹性挡圈	Retaining Ring for Shaft	1
DE171	顶针	Pin for Bell Grank	1
DE172	斜轮传动杆上轴衬	Bearing for Drive Shaft	1
DE173	15牙斜齿轮垫圈	Thrust washer 15	2
DE174	15牙斜齿轮	Spiral Gear 15	1
DE175	齿轮传动杆中轴衬	Bearing for Drive Shaft	1
DE176	齿轮传动杆下轴衬	Bearing for Drive Shaft	1
DE177	键	Key	1
DE178	齿轮传动杆	Driver shaft with Gear	1
DE179	六角扁螺母	Lock Nut for Shaft	1
DE180	推杆挡桩	Pin for Sharpener Housing	1
DE181	支撑弹簧	Spring for Bell Grank	1
DE182	20牙齿轮轴衬	Bearing for Gears 20	2
DE183	20牙齿轮	Spur Gear 20	2
DE184	底板座垫圈	Thrust Washer for Bottom Plate	2
DE185	推杆	Push Rod	1
DE186	推杆定位销	Roll for Push Rod	1
DE187	丝杆轴套	Bearing for Screw Shaft	1
DE188	磨刀机匣底板	Bottom Plate	1
DE189	油垫座	Oil Pad and Holder	1
DE190	分隔块	Spreader Pin	1
DE191	分隔块螺钉	Screw	1
DE192	磨刀机匣底板螺钉	Screw	3
DE193	油垫座螺钉	Screw	2
DE194	空心铜铆钉	Rivet	4
DE195	油垫座左右垫毡	H.Oil Pad	1

DYL-DE



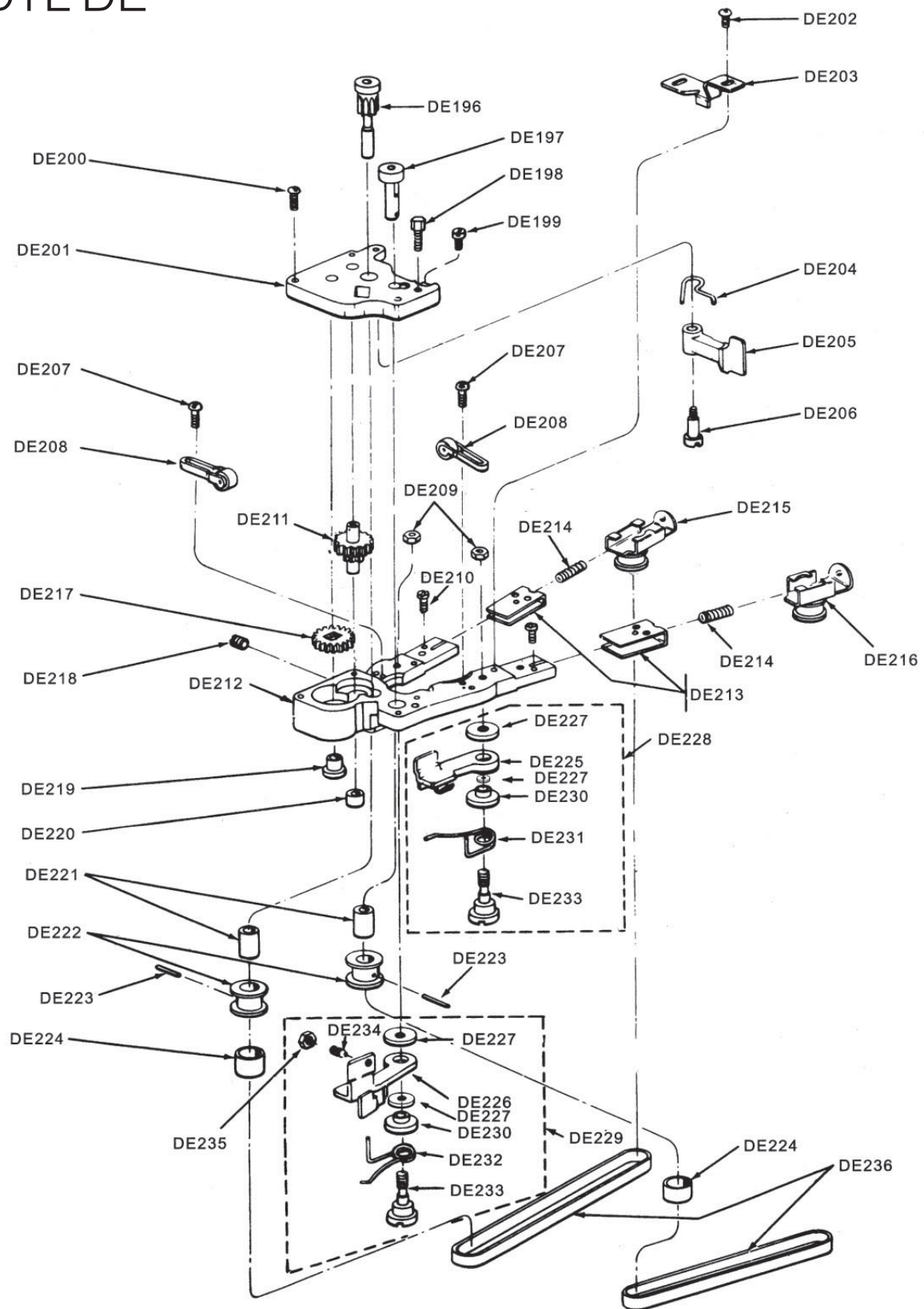
DYL-DE

下齿轮托架组 Lower Gear Bracket Assembly



零件号 Part No.	名称	Description	数量 No. Req'd
DE196	牙齿轮轴	L.H.Shaft Extension8	1
DE197	滑轮轴	RH.Shaft Extension	1
DE198	磨刀架盖板螺钉	Adjusting Screw	1
DE199	半圆头螺钉	Screw	1
DE200	半圆头螺钉	Screw	3
DE201	磨刀架盖板	Gear Cover	1
DE202	挡片螺钉	Screw	2
DE203	挡片	Guide Back of Shandard	1
DE204	夹紧臂弹簧	Spring for Arm	1
DE205	夹紧臂	Clamping Arm for Shoe	1
DE206	夹紧臂螺钉	Screw for Clampring Arm	1
DE207	紧定滚轮螺钉	Screw	4
DE208	紧定滚轮组件	Stabilizer	2
DE209	六角螺母	Nut for Sharpener Shoe Screw	2
DE210	圆柱头螺钉	Screw.#4-36x3/16Fillister Head	2
DE211	双联齿轮	Intermediate Gear	1
DE212	磨刀架	Lower Gear Bracket with Cover	1
DE213	耐磨板	Wear Plate	2
DE214	滑动小轮弹簧	Sping for Pulleyslide	2
DE215	左滑动小轮组件	R.H.Slide with Pully	1
DE216	右滑动小轮组件	Slide with Pulley	1
DE217	24牙齿轮	Gear on ScrewShaft24	1
DE218	平端紧定螺钉	Grease Plug	1
DE219	双向丝杆衬套	Bearing for Screw Shaft	1
DE220	双联齿轮衬套	Bearing for Intermediate Gear	1
DE221	传动小轮衬套	Bearing for shaft Extension	2
DE222	传动小轮	Front Pulley tor Belt	1
DE223	弹性圆柱销	Roll Pin	2
DE224	传动小轮橡胶套	Neoprene Band for Pulley	2
DE225	右磨刀垫	R.H.Pre-set Sharpener Shoe(Only)	1
DE226	左磨刀垫	L.H.Pre-set Sharpener Shoe(Only)	1
DD227	磨刀垫螺钉垫片	Washer	4
DE228	右磨刀垫组件	R.H.Pre-set Sharpener Shoe	1
DE229	左磨刀垫组件	L.H.Pre-set Sharpener Shoe	1
DE230	磨刀垫螺钉衬套	Bushing for sharpener Shoe	2
DE231	右弹簧	R.H.Sharpener Shoe Spring	1
DE232	左弹簧	L.H.Sharpener Shoe Spring	1
DE233	磨刀垫螺钉	Screw for Sharpener shoe	2
DE234	内六角锥端紧定螺钉	Shon Screw	1
DE235	小六角较扁母	Jam Nut	1
DE236	砂带	Belt	2

DYL-DE



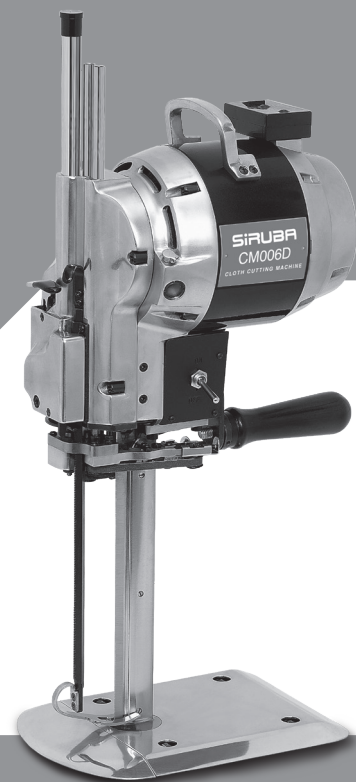
Accessorie S

零件號 PART NO.	名稱	DESCRIPTION	數量
DYL-DC 221	砂帶	Abrasive belt	10
DYL-DC 223/225	內六角板手	Allen key	3
DYL-DC 228	螺絲刀	Screw driver	2
DYL-DC 224	四角套筒	Socket wrench	1
DYL-DC 222	電源線插頭組件	Cable assembly	1
DYL-DC 227	清掃器	Sweeper	1
DYL-DC 226	油壺	Oil	1
DYL-DC 5	刀片	Knife	2

10" / 8" / 6" 不同尺寸零件表

10" / 8" / 6" Different Size Parts List

零件號 PART NO.	名稱	DESCRIPTION	尺寸規格 SIZE				
			13"	12"	10"	8"	6"
DYL-DE 150	壓腳桿	Knife Guard Rod	464	414	364	314	264
DYL-DE 154	方導桿管套	Tube For Square Shaft	345	295	245	195	195
DYL-DE 155	絲桿管套	Tube For Screw Shaft	344	294	244	194	194
DYL-DE 153	方導桿	Square Shaft	397	347	297	247	197
DYL-DE 113	雙向絲桿	Screw Shaft	469	419	369	319	269
DYL-DE 92	刀殼組件	Knife Slide	369	319	269	219	169
DYL-DE 8	刀片	Knife	394	344	294	244	194
DYL-DE 91	立柱	Standard	374	324	274	224	174



高林股份有限公司
KAULIN MFG. CO., LTD.

由於對產品的改良及更新，本產品使用說明書中與零件圖之產品及外觀的修改恕不事先通知！
The specification and/or appearances of the equipment described in this instruction book & parts list are subject to change because of modification which will without previous notice.
DYL-07D08.JUN.2021