

AUTOMATIC SEWING MACHINE

AS

P

-

EBJ

100

□

搭配機種
Model

P	電腦車 Programmable Bar-Tacker
L	平車(單) Single-Needle Lockstitch
K	拷克車 Overlock
V	VC008
C	C007
F	F007
O	裝置類 Attachment

功能
Function

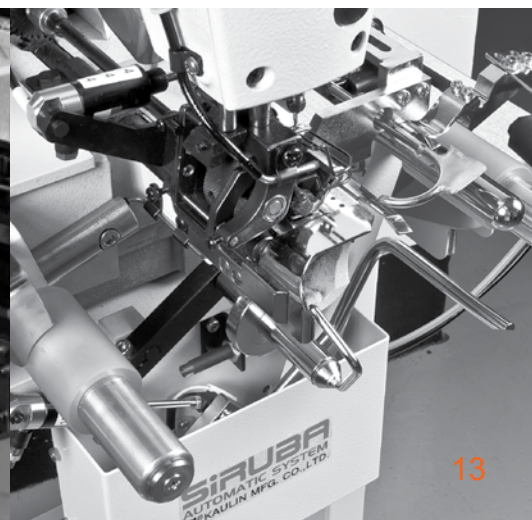
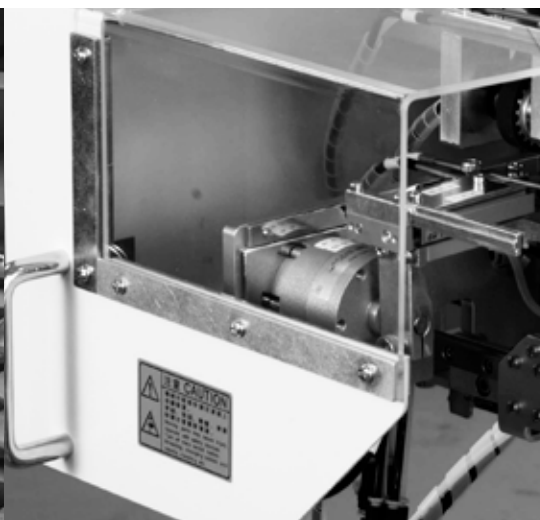
EBJ	自動鬆緊帶搭接機 Automatic Elastic Ring Making Machine
ATS 100	自動三貼條車縫機 Three-Strip Attaching Multi-Needle Sewing Machine
ASM 101	自動羅紋上袖口/褲腳機 Automatic Ribbed Cuff Attaching Machine
ASM 200	自動羅紋下擺機 Automatic Ribbed Hem Attaching To Wide Waistband Machine
TBH 200	自動T恤下擺折縫機 Automatic T-shirt Bottom Hemming Machine
PTA 101	自動上紙標機 Automatic Paper Tag Attaching Machine
AGS 100	皺褶車縫平縫機 Automatic Gathering Sewing Machine
CBH 100	自動連續鎖眼機 Automatic Consecutive Buttonholing Sewing Machine
CBS 100	自動連續釘扣機 Automatic Consecutive Button Sewing Machine
PBH 100	自動平下擺折縫機 Automatic Flat Bottom Hemming Machine
ABF 100	自動送扣裝置 Automatic Button Feeder

版本
Version

機型編號
Model Number



SiRUBA
Automatic Sewing Machine



ASP-EBJ SERIES

自動鬆緊帶搭接機

Automatic Elastic Ring Making Machine



ASP-EBJ100A



ASP-EBJ150



ASP-EBJ200

特點

FEATURES

1 EBJ系列實現全自動鬆緊帶車縫。量測、裁剪、送料、車縫一系列連續動作，具有絕對的穩定度，精準可靠。
EBJ Series realizes automatic sewing of elastic band. Measuring, cutting, feeding, and sewing are in sequence with absolute stability. It is accurate and reliable.

2 無人化生產，成品良率高，投資回收期短，最慢一年即可回收。
Unmanned Production with high yield rate. Payback period is short as maximum 1-year ROI.

3 採用高階感知器，靈敏偵測入料狀況，具有即時警示，自動暫停功能。
By high-end sensors, it detects the feeding sensitively with real-time alarm and auto pause function.

4 可選配整燙裝置，確保入料前的平整度，解決皺褶或扭曲的問題。
Pre-ironing device is optional, which ensures the flatness when the material is entering, to solve the problem of wrinkles or twists.

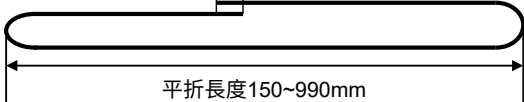
5 可選配視覺辨識系統，偵測Logo並依設定位置裁剪與車縫。
Visual identification system is optional, which detects Logo and then positions cutting and sewing according to user's setting.

影片連結
Video link



規格

SPECIFICATIONS

型號 Model	ASP-EBJ100A	ASP-EBJ100S	ASP-EBJ150	ASP-EBJ200
縫紉機機頭 Machine Head	JUKI LK-1920		JUKI LK-1920	JUKI AMS210ENSS
車縫速度 Sewing Speed	2500 SPM (最高 Max)			2800 SPM (最高 Max)
使用針型 Needle Type	DP×5 #14			DP×17 #14
線跡形式 Stitch type	單針鎖縫 #301 Single Needle Lockstitch #301			
鬆緊帶寬度 Rubber Width	20~50 mm	6~20 mm	20~50 mm	20~90 mm
車縫花型儲存 Pattern Memory	EEPROM			IP-420 (JUKI AMS)
最大儲存車縫花型數量 Max. Numbers of Pattern	99 種車縫花型 99 Patterns			999 種車縫花型 999 Patterns
切帶方式與材料 Tape Cutting Method	刀切 Knife Cutting			◎刀切 Knife Cutting △超聲波 Ultrasonic Cutting
生產效率 Production Capacity	視縫製針數而定 舉例: 190針縫製樣式的情形下，迴圈時間: 8秒/件; 3600件/ 8小時 Depends on the stitch pattern, Ex: 190 stitches pattern, Cycle Time: 8 Sec./ pcs (Max.); 3600 pcs/ 8Hr	視縫製針數而定 舉例: 71針縫製樣式的情形下，迴圈時間: 6秒/件; 4800件/ 8小時 Depends on the stitch pattern, Ex: 71 stitches pattern Cycle Time: 6 Sec./ pcs(Max.); 4800 pcs/ 8Hr	視縫製針數而定 舉例: 190針縫製樣式的情形下 迴圈時間: 8秒/件; 3600件/ 8小時 Depends on the stitch pattern Ex: 190 stitches pattern as below Cycle Time: 8 Sec./ pcs(Max.); 3600 pcs/ 8Hr	
縫紉尺寸 Stitch Length	<div>重疊 0~13mm Lapping 0~13mm</div>  <div>平折長度150~990mm flat folding length 150~990mm</div>			
氣體消耗量 Air Consumption	30 公升/分 30 L/Min.			
氣壓 Air Pressure	0.5 MPa			
電源電壓 Power Supply	Single Phase 1Φ AC200~240V 50/60Hz			
電力消耗 Power consumption	750 W (Max)	750 W (Max)	800 W (Max)	800 W (Max)
機器尺寸 Dimensions	(W)1230X(D)1030X(H)1530mm (With table and thread stand 含桌板、線架)			(W)1550X(D)1150X(H)1530mm (With table and thread stand 含桌板、線架)
配件 Device				
收料裝置 Stacker	△	△	△	△
熱整燙裝置 Pre-Ironing	—	—	△	△
LOGO 辨識裝置 LOGO Identification	—	—	◎	◎

◎ 標配 Standard

△ 選配 Option

ASV-ATS SERIES

自動三貼條車縫機

Three-Strip Attaching Multi-Needle Sewing Machine

影片連結
Video link



特點

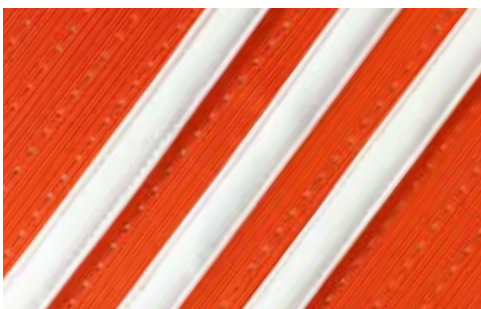
FEATURES

1 特殊設計壓腳，快速縫合防止皺褶，可依不同特性進行調整(ATS100A/ATS100B)。
Custom-designed presser foot for Adidas 3-stripe sewing.
Puckering free and adjustable. (ATS100A/ATS100B)

2 雙電眼控制，可減少廢料，節省人工裁切收料時間。
Dual-sensor control to reduce material waste and save cutting/collecting time.

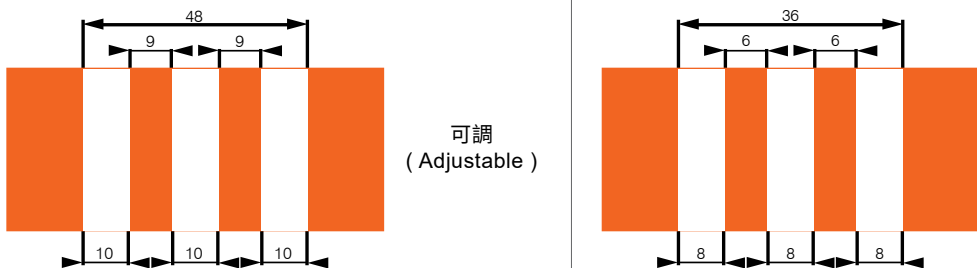
3 最短收料長度150mm。
Minimum finished length: 150mm.

4 三顆馬達，獨立控制送帶，張力控制精準。
Stripe feeding controlled by individual motors for a better feeding performance.



規格

SPECIFICATIONS

型號 Model	ASV-ATS100A / ASV-ATS100C / ASV-ATS100B		
是否有特殊壓腳 Custom-designed presser foot	ASV-ATS100A：有 Yes	ASV-ATS100C：無 No	ASV-ATS100B：有 Yes
縫紉機機頭 Machine Head	SiRUBA VC008A-06064P/VPL		SiRUBA VC008A-06048P/VPL
車縫速度 Sewing Speed	2000 SPM (最高Max)		
使用針型 Needle Type	UO×113GS #11		
車縫平台寬度 Available Width of Stitching Platform	440 mm		
縫紉針距 Stitch Length	6.4 mm		
生產樣式 Sewing Pattern	 <p>可調 (Adjustable)</p>		
氣體消耗量 Air Consumption	40公升/分 40 L/min		
氣壓 Air Pressure	0.5 MPa		
電源電壓 Power Supply	Single Phase 1Φ AC200~240V 50/60Hz		
電力消耗 Power Consumption	800 W (Max)		
機器尺寸 Dimensions	(W)1200×(D)900×(H)1900 mm (With table and thread stand含桌板、線架)		

※收料限制：布料長度 150 mm 以上

※Material limit : essential requirement cloth length ≥ 150 mm

ASK-ASM101

自動羅紋上袖口/褲腳機

Automatic Ribbed Cuff
Attaching Machine

影片連結
Video link



特點

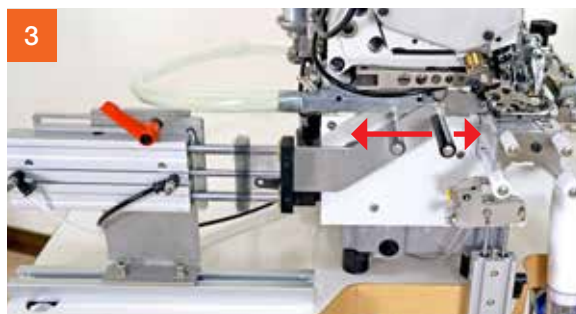
FEATURES

1 自動過骨感知偵測，設定結尾需求針數。
Auto seam detector, easy to set up the stitches after seam.

2 快速調整機構，方便設定與維護。
Quick adjustment mechanism, easy for setting and maintenance.

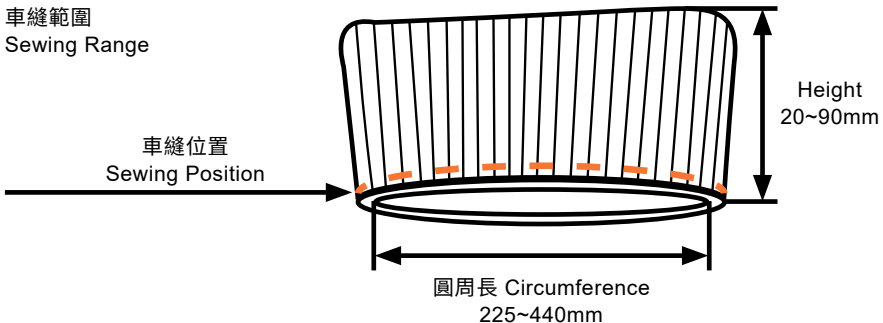
3 張力調整，自動拉伸，減少布料起皺。
Tension controller for smooth feeding and puckering free.

4 防內捲裝置，減少內捲不良率。
Anti-curly edge device reduce sewing defects.



規格

SPECIFICATIONS

型號 Model	ASK-ASM101
縫紉機機頭 Machine Head	SiRUBA 747KST-514M-3-24
車縫速度 Sewing Speed	5500 SPM (最高Max)
使用針型 Needle Type	DC×27 #11
壓腳高度 Presser foot Height	8.5 mm (最高Max)
包邊寬度 Overedge Width	4 mm
縫紉針距 Stitch Length	2 mm
羅紋布尺寸 (mm) Rib Size (mm)	 <p>※羅紋布口徑與布身口徑相差需在40mm內，布身布厚>0.9mm，彈性布料。 ※The difference between the caliber of the ribbed fabric and the fabric body should be within 40mm. The fabric should be elastic and the thickness of fabric body should be greater than 0.9mm.</p>
布厚範圍 Fabric Thickness	7mm
氣體消耗量 Air Consumption	180公升/分 180 L/min
氣壓 Air Pressure	0.5 MPa
電源電壓 Power Supply	Single Phase 1Φ AC200~240V 50/60Hz
電力消耗 Power Consumption	500 W (Max)
機器尺寸 Dimensions	(W)825×(D)640×(H)1622mm (With table and thread stand 含桌板、線架)
生產效率 Production Capacity	200~240 件/小☒ (車縫速度:3000 spm☒羅紋布尺寸 圓周長:270mm☒高度:60mm) 200~240 PCS/Hour (Sewing Speed: 3000 spm, Rib Size: Circumference: 270mm, Height: 60mm)

ASK-ASM200

自動羅紋下擺機

Automatic Ribbed Hem Attaching Machine



特點

FEATURES

1

撐布：可以依照商品需求做尺寸設定。

Fabric tension: Can be adjusted according to product requirements.

2

穩布：搭配Sensor穩布輪可將布邊穩定在 $\pm 2\text{mm}$ 內，使其送布量與切布量穩定。

Fabric stability: Using sensor stabilizing wheel can stabilize the cloth edge within $\pm 2\text{mm}$ and make the feeding and cutting stable.

3

骨位偵測：螺紋布骨位自動感測定位功能。

Seam detection: Automatic sensing positioning function for rib fabric seam.

4

疊縫設計：布料骨位感知偵測，簡單設定結尾疊縫需求針數。

Overlapping stitching: End overlapping stitching counts can be simply set up by fabric seam detection sensor.

1



3



2

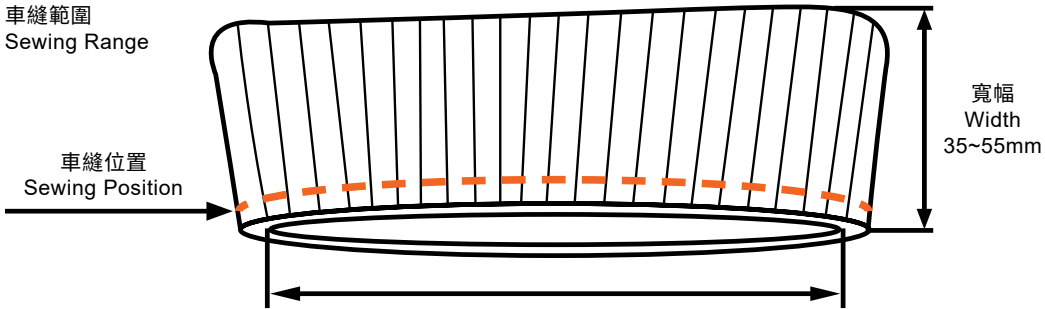


4



規格

SPECIFICATIONS

型號 Model	ASK-ASM200
縫紉機機頭 Machine Head	SiRUBA 747KST-514M-3-24/VT
車縫速度 Sewing Speed	4500 SPM (最高Max)
使用針型 Needle Type	DC×27 #11
壓腳高度 Presser foot Height	7 mm
包邊寬度 Overedge Width	6 mm
縫紉針距 Stitch Length	0.5~6 mm
羅紋布尺寸 (mm) Rib Size (mm)	<p>車縫範圍 Sewing Range</p>  <p>*帶口袋之衣款不適用 *Garment with pocket is not applicable</p>
布厚範圍 Fabric Thickness	6.5 mm (Max)
氣體消耗量 Air Consumption	400公升/分 400 L/min
氣壓 Air Pressure	0.5 MPa
電源電壓 Power Supply	Single Phase 1Φ AC200~240V 50/60Hz
電力消耗 Power Consumption	1K W (Max)
機器尺寸 Dimensions	(W)1300×(D)790×(H)1640 mm (With table and thread stand 含桌板、線架)
生產效率 Production Capacity	60~80 件/小時 (車縫速度:4500 spm 羅紋布尺寸 圓周長:980mm 高度:55mm) 60~80 PCS/Hour (Sewing Speed: 4500 spm, Rib Size: Circumference: 980mm, Height: 55mm)

ASC-TBH200

自動T恤下擺折縫機 Automatic T-shirt Bottom Hemming Machine

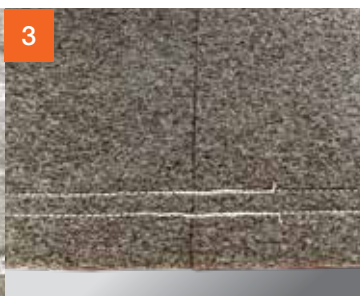
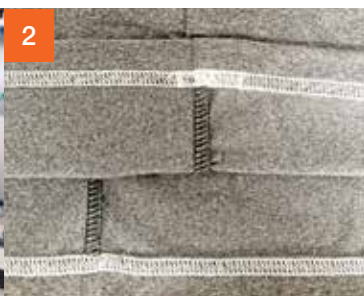
影片連結
Video link



特點








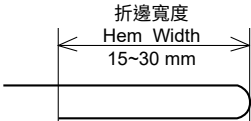
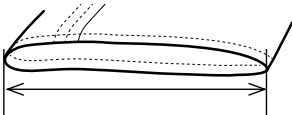
FEATURES

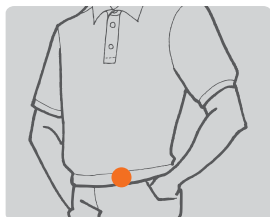
- 1** 專利導向輪模仿人工手勢，使布料糾偏功能更強大，面料適用性更寬廣。
The patented guide wheel simulates operator's gestures, it makes the machine operating smoothly during sewing, and applicable for more kinds of fabric.
- 2** 專利吹氣倒縫功能，真正實現多骨位同方向倒縫。
Patented function of air-blowing reverse stitching makes side seams reverse stitching in the same direction.
- 3** 起縫和結束線跡完全對齊。
The start and end stitches are perfectly aligned.
- 4** 設備自帶衣服大小碼自動調節功能，避免生產中出現混碼而導致縫製錯亂。
The equipment comes with an automatic adjustment function of clothes size, which avoids confusion in sewing caused by mixed sizes in production.
- 5** 38-90公分的縫製範圍，可以真正的實現XS到5XL自由切換。
The sewing range is 38-90 cm which can sew XS to 5XL.
- 6** 適用於筒狀或已包邊縫的全自動折下擺車縫。
Fully automatic hemming is suitable for tubular materials or materials with overlock seams.
- 7** 可以做第一或最後工序的操作。
It can be the first stage or last stage of production process.
- 8** 100%棉質紗線的高速車縫。
High-speed sewing with 100% cotton thread.
- 9** 一人可操作多台機器，降低人工縫製難度標準化生產，無需技能工操作。
Machine operators can handle more than one machine simultaneously. Reducing the difficulty of manual sewing and standardizing production, without the need for skilled workers to operate.



規格

SPECIFICATIONS

ASC-TBH200	 Needle No.	 mm	 mm	 mm	 S.P.M. (Max)	 mm	 KG
	UY128	 折邊寬度 Hem Width 15~30 mm	標配：5.6 選配：4.0 / 4.8 / 6.4 Normal standard: 5.6 Optional 4.0 / 4.8 / 6.4	0.3~4.5	4500	L1200 W1200 H1670	180 / 240
生產能力 Capability of Output		80~120 pcs/ hour	適用周長(攤平) Circumference of T-shirt Bottom(Flattened)	 380-900 mm 對折中心距 Folding center distance			
電源 Power Supply		AC 220V , 50/60Hz					
工作氣壓 Air Pressure		4 bar					
耗氣量 Air Consumption		190 L / min					
縫紉機機頭 Machine Head			標配:左切刀筒型繙縫機 / Normal standard: Bottom hemming with left side fabric trimmer C007KP-W812A-356/CRL/UTP				
標配倒骨 Stantard seam guide function			T-shirt左右兩側拷克骨，車縫時可控制前/後撥骨，達到骨位方向一致的效果 The function of whipping overlock seams from both sides of the T-shirt is to achieve the same side seam result.				
IOT物聯對接（選配） IOT interconnection			下單時，可依需求選擇加購 Please select it when ordering				
掃線裝置 Sweep the line device			吹氣裝置（標配），電磁鐵勾線裝置（選配） Standard configuration: blowing device Optional configuration: Electromagnet wire hooking device				



ASP-PTA101

自動上紙標機

Automatic Paper Tag Attaching Machine

影片連結
Video link



特點

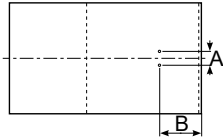
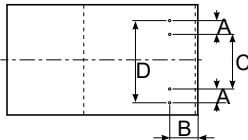
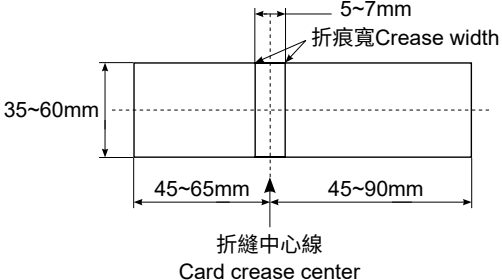
FEATURES

- 1 彈性卡槽，方便調整，最高容量250張(厚度0.5mm)。
Paper card loader is flexible for easy adjustment.
The capacity is up to 250 pieces.
- 2 旋轉缸更平滑與穩定 (ASP-PTA101)。
Smooth and stable rotary cylinder.
- 3 利用快拆裝置，快速調整紙卡尺寸。
Easy to adjust card spec by quick release device.
- 4 單件車縫的週期時間，約為3-5秒鐘。
Cycle time 3-5 sec.
- 5 儲氣筒(選配)，解決氣源不穩的問題。
Air Tank (Optional), solution to the unstable air supply.



規格

SPECIFICATIONS

型號 Model	ASP-PTA101
縫紉機機頭 Machine Head	SiRUBA LKS-1903AN
車縫速度 Sewing Speed	2000 SPM (最高Max)
使用針型 Needle Type	DP×17 #11
紙卡單邊長 Card Length	Left 45~65 mm, Right 45~90 mm
紙卡寬度 Card Width	35~65 mm
折痕寬度 Crease Width	5~7 mm
紙卡厚度 Card Thickness	0.4~0.6 mm
車縫範圍 Sewing range	<div> <div> <p>Singal seam</p>  <p>A 3~6mm B 15~30mm</p> </div> <div> <p>Double seam</p>  <p>A 3~6mm×2 B 15~30mm C 20~30mm D ≤40mm (考慮縮放比例 Consider scale size)</p> </div> </div>
適用紙卡規格 Card dimensions	 <p>35~60mm</p> <p>45~65mm</p> <p>45~90mm</p> <p>5~7mm 折痕寬Crease width</p> <p>折縫中心線 Card crease center</p>
氣體消耗量 Air Consumption	40 L/min
氣壓 Air Pressure	0.5 Mpa
電源電壓 Power Supply	Single Phase 1Φ AC200~240V 50/60Hz
電力消耗 Power Consumption	660 W (Max)
機器尺寸 Dimensions	(W)1050×(D)705×(H)1530 mm (With table and thread stand 含桌板、線架)

ASL-AGS100

皺褶車縫平縫機

Automatic
Gathering Sewing Machine

影片連結
Video link



特點

FEATURES

1

多功能控制面板

操作屏簡單明了，最大限度簡化操作。

Multi-Functional Control Panel

The control panel is very user friendly to operate.

2

空車出線

車縫效果佳且不易脫線。

Stitching

Having nice sewing quality, the thread is not easy to fall off.

3

起針/終縫密縫

縮小起縫/終縫針距使省位縫合更加牢靠。

Condense stitching for both the start and end of sewing

Reduce the stitch distance for both start & end of sewing to make finished product more secure.

4

收料功能

成捆褲片夾具、放料台、平順裝置优化工作區域提高效率。

Material Collection Function

Clamp for bundle trouser pieces, placement table, nice working area for efficiency improving.

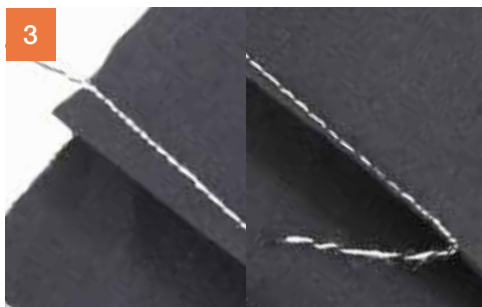
5

一鍵更換模具

快速拆裝模具、适用于不同版型模具，快速更換或機器維護保養。

One-button mold replacement

Quick replacement for various molds and machine maintenance.



規格

SPECIFICATIONS

型號 Model	ASL-AGS100
縫紉機機頭 Machine Head	SiRUBA DL7500
車縫速度 Sewing Speed	3900 SPM (Max)
使用針型 Needle Type	DP x 17
縫紉針距 Stitch Length	1~5 mm
車縫範圍 Sewing Range	130 mm (可根據需求定制模具長度至 160mm) 130 mm (It is applicable to customize up to 160 mm)
氣壓 Air Pressure	0.5 MPa
電源電壓 Power Supply	Single Phase 1Φ AC200~240V
機器尺寸 Dimensions	(W)1050×(D)950×(H)1100mm
生產效率 Production Capacity	1000~1300 道次 / 小時 1000 ~ 1300 Gathering / Hour

ASP-CBH100

自動連續鎖眼機

Automatic Consecutive
Buttonholing Sewing Machine

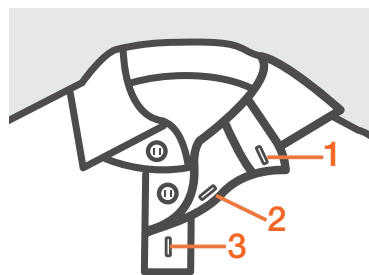
影片連結
Video link



特點

FEATURES

- 1** 一人可同時操作兩台設備。
One person can operate two machines at the same time.
- 2** 橫豎鎖眼一次性完成。
Both horizontal and vertical buttonholing applicable.
- 3** 門襟寬窄可調
Shirt fronting size adjustable.
- 4** 触摸屏調節第一個鎖眼的角度與起縫位置。
The angle and start sewing position of first buttonholing can be adjusted by touch panel.
- 5** 紅外線輔助布料定位。
Infrared-assisted fabric positioning.
- 6** 多款參數儲存功能。
Various parameters storage.



規格

SPECIFICATIONS

型號 Model	ASP-CBH100
縫紉機機頭 Machine Head	SiRUBA LBHS-1790DS
車縫速度 Sewing Speed	4200 SPM (Max)
使用針型 Needle Type	DP x 5
自動鎖眼數 Sewing Quantity	2~4
車縫範圍 Sewing Range	160 mm (Max)
氣壓 Air Pressure	0.4 MPa
電源電壓 Power Supply	Single Phase 1Φ AC200-240V
機器尺寸 Dimensions	(W)710×(D)750×(H)1400mm
生產效率 Production Capacity	240~280 件/小時 240~280 PCS/Hour

ASP-CBS100

自動連續釘扣機

Automatic Consecutive Button Sewing Machine

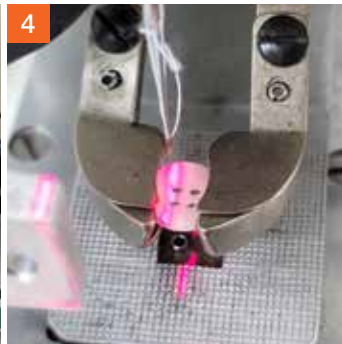
影片連結
Video link



特點

FEATURES

- 1 一人可同時操作兩台設備。
One person can operate two machines at the same time.
- 2 鈕扣大小厚薄可調。
Button size / thickness adjustable.
- 3 門襟寬窄可調。
Shirt fronting size adjustable.
- 4 紅外線輔助布料定位。
Infrared-assisted fabric positioning.
- 5 自動送鈕扣。
Automatic button feeding.
- 6 触摸屏調節鈕扣數量與距離。
Button quantity and distance can be adjusted by touch panel.
- 7 多款參數儲存功能。
Various parameters storage.



規格

SPECIFICATIONS

型號 Model	ASP-CBS100
縫紉機機頭 Machine Head	SiRUBA LKS-1903D-SS
車縫速度 Sewing Speed	2700 SPM (Max)
使用針型 Needle Type	DP x 17
自動釘扣數 Sewing Quantity	2~4
車縫範圍 Sewing Range	160 mm (Max)
氣壓 Air Pressure	0.4 MPa
電源電壓 Power Supply	Single Phase 1Φ AC200-240V
機器尺寸 Dimensions	(W)900 × (D)950 × (H)1400mm
生產效率 Production Capacity	260~300 件/小時 260~300 PCS/Hour

ASC-PBH100

自動平下擺折縫機 Automatic Flat Bottom Hemming Machine



影片連結
Video link



特點

FEATURES

1. 降低人工縫製難度，無須技能工操作。
2. 站立式操作模式
3. 輸送帶傳送機構
4. 自動切邊裝置
5. 步進電機控制系統
6. 自動收料系統

- 1.Reducing the difficulty of manual sewing, and eliminating the need for skilled labor.
- 2.Stand-up operating mode.
- 3.Conveyor belt transmission mechanism.
- 4.Automatic edge-cutting device.
- 5.Stepper motor control system.
- 6.Automatic material receiving system.

1 自動送料裝置

自動送料裝置，可連續穩定的自動送料。效率高、穩定性強。

Automatic Feeding Device

An automatic feeding device that enables continuous and stable automatic feeding. High efficiency and strong stability.

2 自動剪線頭裝置

用於切除布料多餘的線頭，適應惡劣環境能力強、穩定性和可靠性高。

Automatic Thread Cutting Device

Used to trim excess threads from fabric, with strong adaptability to harsh environments and high stability and reliability.

3 左修刀切布邊裝置

用於去掉布料毛邊，從而達到修整縫製，使成品更加美觀、質量更好。提高成品美觀度，大大提升成品價值。

Left Hand Side Fabric Trimmer Device

Used to remove fabric edges, achieving seam finishing for a more aesthetically pleasing and higher-quality finished product. Enhances the visual appeal of the finished product and significantly increases its value.

**規格****SPECIFICATIONS**

型號 Model	ASC-PBH100		
縫紉機機頭 Machine Head	SiRUBA C007L-W812A-356/CRL		
車縫速度 Sewing Speed	3500SPM (Max)		
車縫範圍 Sewing Range		折邊寬度 Hem Width	
氣壓 Air Pressure	4 Bar		
電源電壓 Power Supply	220V		
機器尺寸 Dimensions	(W) 2300×(D) 610×(H) 1450 mm		
生產效率 Production Capacity	360~480 片 / 小時 360~480 PCS / Hour		
IOT 物聯對接 (選配) IOT interconnection	下單時，可依需求選擇加購 Please select it when ordering		

ASO-ABF100

自動送扣裝置 Automatic Button Feeder

ASO-ABF100J

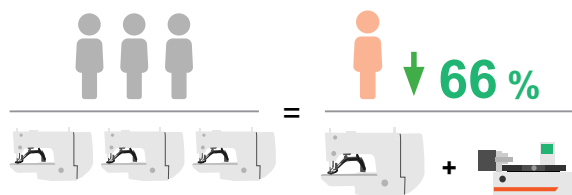


ASO-ABF100B



特點

FEATURES



電子釘扣機附自動送扣比傳統縫扣機速度提升3倍
Button sewing machine with automatic button feeder enhances 300% efficiency of button sewing.

循環時間: 2.2秒/顆; 13,090顆/ 8小時
Cycle Time: 2.2 Sec./Button; 13,090 Buttons/8 Hr



影片連結
Video link



操作面板

簡單圖像式操作介面，所有車縫所需資料，皆能清楚顯示。

PANEL

User friendly interface, all sewing parameters are clearly shown.



感知器訊號檢測

透過操作面板A02功能，檢測感知器訊號正常。

SENSOR SIGNAL DETECT

Checking the sensors detecting by A02 function of operation panel.



翻扣機制

自動吹風翻扣功能，提高大尺寸鈕扣(ø16mm以上)的精確性。

FLIP MECHANISM

Flip mechanism enhance the accuracy of ø16mm up button by auto air-blow.



鈕扣夾爪自動感知器

可鈕扣夾爪偵測鈕扣位置，避免空縫。

SMART SENSOR OF BUTTON CLAMP

Button clamp can detect the button position and avoid sewing without button.



送扣軌道調整

送扣軌道調整由步進馬達精準控制。

BUTTON CHANNEL ADJUSTMENT

Channel adjustment is controlled by stepping motor accurately.



單鍵退扣

按鍵即可清空軌道內鈕扣。

DISCHARGING

Press the key and then remove all the buttons in the channel.



電子式自動量測鈕扣

精準、極速，短時間內即可完成更換鈕扣設定。

ELECTRONIC AUTOMATIC MEASUREMENT OF BUTTON SIZE

Accurate, Ultrafast, adjusting different button in a short time.

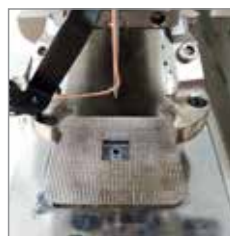


送扣載具模組化

可因應不同鈕扣規格，快速更換適合的送扣載具。

BUTTON CARRIER MODULE

Modularized button carrier is for different button size and replacement.



機頭上鈕扣夾爪

變換鈕扣尺寸時，鈕扣夾爪無須變更調整。

BUTTON CLAMP OF MACHINE HEAD

Button clamp is suitable for variety button size, the clamp can be used in different button size and no further adjustment needed.



ABF-J(B) 安裝

簡易、快速安裝。

INSTALLATION

Easy and friendly installation.

規格

SPECIFICATIONS

型號 Model	ABF100J	ABF100B
適用車頭 Apply For	Juki LK-1903A/ LK-1903AN Juki LK-1903B/ LK-1903BN	Brother 438FX
工作夾具提升量 Rising Amount of Clamp	最大:13mm Maximum:13mm	
餵扣時間 Feeding Time	0.35~0.5秒 0.35~0.5 Sec.	
使用鈕扣 Button	種類：圓形平扣 尺寸:Φ8~26mm ※Ø10mm以下為特規，須更換規格件 Type: Circle Flat Button Size: Φ8~26mm ※Ø10mm is special specification, need to replace standard parts.	
使用扣孔 Button Hole	標準：2或4孔 選配：3孔 Standard: 2&4 Holes Option: 3 Holes	
鈕扣厚度 Thickness of Button	1.5~3.5mm	
氣體消耗量 Air Consumption	20公升/分 20 L/min	
氣壓 Air Pressure	0.5 MPa	
電源電壓 Power Supply	單相AC 200~240V 50/60Hz single-phase AC 200~240V 50/60Hz	
機器尺寸 Dimensions	寬 440 × 深 560 × 高 280mm 440(W)x560(D)x280(H)mm	

Remark:

標配：專用桌板、腳架、鈕扣壓腳、底板、大小鋸齒板及12組標準送扣載具使用
選配：3孔扣孔、對位器、雷射燈對位器

*鈕扣尺寸定義：

超小鈕扣尺寸Φ8~10mm，小鈕扣尺寸Φ10~20mm，大鈕扣尺寸Φ20~26mm
鈕扣夾爪適用範圍Φ8~26mm，但縫製超小或大鈕扣時，需視鈕扣厚度與凸面的情況

**大小鋸齒板選用建議

使用鈕扣	尺寸:Φ8~16mm	尺寸:Φ16~25mm
	小鈕扣鋸齒板	大鈕扣鋸齒板

Remark:

Standard: Professional table, All Set of Button Presser Foot, Small/Big Button
Serrated Plate and Bottom Plate, 12 Sets of Standard Button Carrier.
Option: 3-Holed of Button Carrier, Button Spacer, Button Spacer with Laser Light.

*The definition of Button Size:

Extra small button size is Φ8~10mm, small button size is Φ10~20mm, and large button size is Φ20 ~ 26 mm. Basically, Button clamp of machine head is applied for Φ8~26mm, but that sewing extra/ large button size are depend on its thickness and convexity.

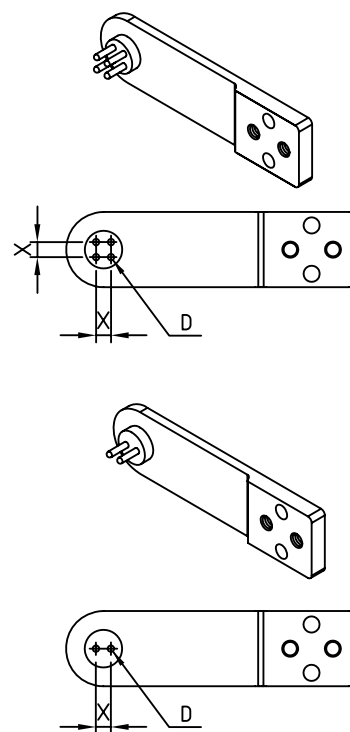
**Suggestion of selecting the serrated plate

Button	Size: Φ8~16mm	Size: Φ16~25mm
	The small serrated plate	The Big serrated plate

送扣載具模組規格

Button Carrier Specification

零件編碼 Code of Parts	X $+0.05$ -0.05	D $+0.05$ -0.05	鈕扣孔數 Button Holes
ABF118	2.2	1.0	4
ABF119	2.2	1.0	2
ABF120	2.4	1.2	4
ABF121	2.4	1.2	2
ABF269	2.6	1.2	4
ABF270	2.6	1.2	2
ABF122	2.8	1.2	4
ABF123	2.8	1.2	2
ABF124	3.2	1.2	4
ABF125	3.2	1.2	2
ABF126	3.6	1.2	4
ABF127	3.6	1.2	2



鈕扣形狀

Button Shape

適用鈕扣的形狀 Available Shape of Button	不適用鈕扣的形狀 Unavailable Shape of Button
<p>鈕扣的兩面需有明顯的不同，用以區別正反面。 (凹面和凸面須有至少1.2mm以上的差距。)</p> <p>The two sides of the button must be clearly different to distinguish the front and back (There must be a gap of more than 1.2mm between the concave surface and the convex surface)</p>	<p>兩面皆相同之鈕扣，機器無法判別</p> <p>Machine can't work if one side of the button is identical to the other.</p>

