

ASV-ATS SERIES

自動三貼條車縫機

Three-Strip Attaching Multi Needle Sewing Machine

影片連結
Video link



特點

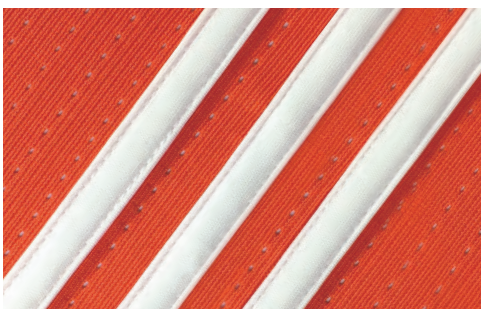
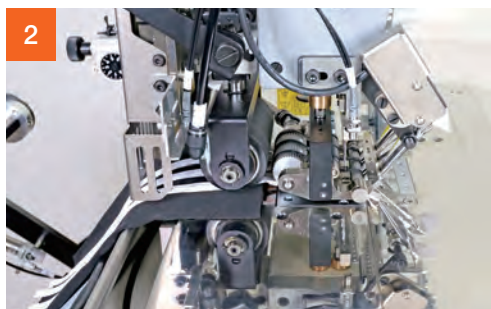
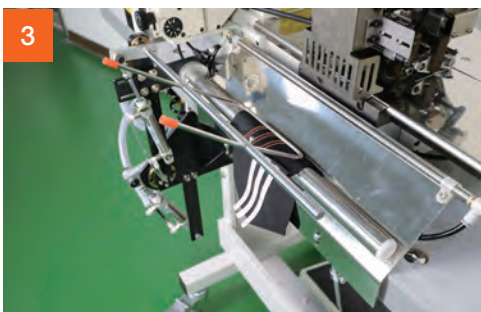
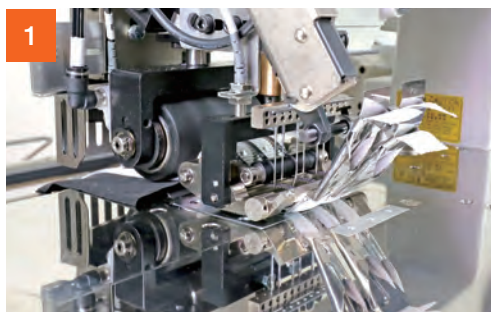
FEATURES

1 特殊設計壓腳，快速縫合防止皺褶，可依不同特性進行調整(ATS100A)
Custom-designed presser foot for Adidas 3-stripe sewing. Puckering free and adjustable. (ATS100A)

2 雙電眼控制，可減少廢料，節省人工裁切收料時間
Dual-sensor control to reduce material waste and save cutting/collecting time.

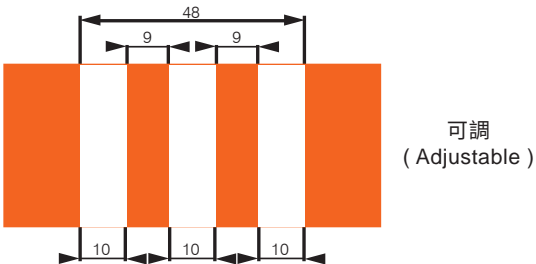
3 最短收料長度150mm
Minimum finished length:150mm

4 三顆馬達，獨立控制送帶，張力控制精準
Stripe feeding controlled by individual motors for a better feeding performance.



規格

SPECIFICATIONS

型號 Model	ASV-ATS100A / ASV-ATS100C	
是否有特殊壓腳 Custom-designed presser foot	ASV-ATS100A：有 Yes	ASV-ATS100C：無 No
縫紉機機頭 Machine Head	SiRUBA VC008-06064P/VPL	
車縫速度 Sewing Speed	2000 SPM (最高Max)	
使用針型 Needle Type	UO×113GS #11	
車縫平台寬度 Available Width of Stitching Platform	440 mm	
縫紉針距 Stitch Length	6.4 mm	
生產樣式 Sewing Pattern		
氣體消耗量 Air Consumption	40公升/分 40 L/min	
氣壓 Air Pressure	0.5 MPa	
電源電壓 Power Supply	Single Phase 1Φ AC200~240V 50/60Hz	
消費電力 Power Consumption	800 W (Max)	
機器尺寸 Dimensions	(W)1200×(D)900×(H)1900 mm (With table and thread stand含桌板、線架)	
生產效率 Production Capacity	車縫布長：600mm計算、縫距：2 mm、 車縫速度：1500 SPM、產速：3 件/min Cloth length：600mm、Stitch pitch: 2 mm、 Sewing speed: 1500 SPM、Output: 3 pcs/min	

※收料限制：布料長度 150 mm 以上

※Material limit : essential requirement cloth length ≥ 150 mm