

ASP-ABF100

電子釘扣機附自動送扣

Computer-controlled Lockstitch Button Sewing Machine with Auto Button Feeder



ASP-ABF100



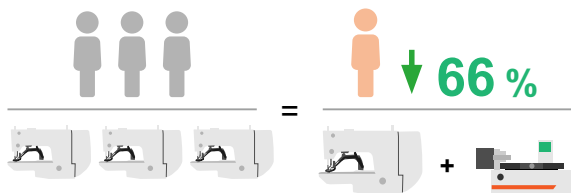
ASO-ABF100J



ASO-ABF100B

特點

FEATURES



電子釘扣機附自動送扣比傳統縫扣機速度提升3倍
Button sewing machine with auto button feeder enhances 300% efficiency of button sewing.

循環時間: 2.2秒/顆; 13,090顆/ 8小時
Cycle Time: 2.2 Sec./Button; 13,090 Buttons/8 Hr



影片連結
Video link



操作面板

簡單圖像式操作介面，所有車縫所需資料，皆能清楚顯示

PANEL

User friendly interface, all sewing parameters are clearly shown.



感知器訊號檢測

透過操作面板A02功能，檢測感知器訊號正常

SENSOR SIGNAL DETECT

Checking the sensors detecting by A02 function of operation panel.



翻扣機制

自動吹風翻扣功能，提高大尺寸鈕扣 (ø16mm以上) 的精確性

FLIP MECHANISM

Flip mechanism enhance the accuracy of ø16mm up button by auto air-blow.



鈕扣夾爪自動感知器

可鈕扣夾爪偵測鈕扣位置，避免空縫

SMART SENSOR OF BUTTON CLAMP

Button clamp can detect the button position and avoid sewing without button.



送扣軌道調整

送扣軌道調整由步進馬達精準控制

BUTTON CHANNEL ADJUSTMENT

Channel adjustment is controlled by stepping motor accurately.



單鍵退扣

按鍵即可清空軌道內鈕扣

DISCHARGING

Press the key and then remove all the buttons in the channel.

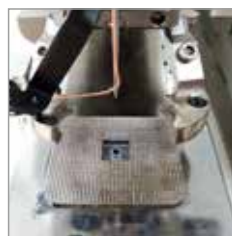


電子式自動量測鈕扣

精準、極速，短時間內即可完成更換鈕扣設定

ELECTRONIC AUTOMATIC MEASUREMENT OF BUTTON SIZE

Accurate, Ultrafast, adjusting different button in a short time.



機頭上鈕扣夾爪

變換鈕扣尺寸時，鈕扣夾爪無須變更調整

BUTTON CLAMP OF MACHINE HEAD

Button clamp is suitable for variety button size, the clamp can be used in different button size and no further adjustment needed.



送扣載具模組化

可因應不同鈕扣規格，快速更換適合的送扣載具

BUTTON CARRIER MODULE

Modularized button carrier is for different button size and replacement.



ABF-J(B)安裝

簡易、快速安裝

INSTALLATION

Easy and friendly installation.

規格

SPECIFICATIONS

型號 Model	ABF100J	ABF100B
適用車頭 Apply For	Juki LK-1903A/LK-1903B/ LK-1903AN	Brother 438FX
工作夾具提升量 Rising Amount of Clamp	最大:13mm Maximum:13mm	
餵扣時間 Feeding Time	0.35~0.5秒 0.35~0.5 Sec.	
使用鈕扣 Button	種類：圓形平扣 尺寸:Φ8~26mm ※Ø10mm以下為特規，須更換規格件 Type: Circle Flat Button Size: Φ8~26mm ※Ø10mm is special specification, need to replace standard parts.	
使用扣孔 Button Hole	標準：2或4孔 選配：3孔 Standard: 2&4 Holes Option: 3 Holes	
鈕扣厚度 Thickness of Button	1.5~3.5mm	
氣體消耗量 Air Consumption	20公升/分 20 L/min	
氣壓 Air Pressure	0.5 MPa	
電源電壓 Power Supply	單相AC 200~240V 50/60Hz single-phase AC 200~240V 50/60Hz	
機器尺寸 Dimensions	寬 440 × 深 560 × 高 280mm 440(W)x560(D)x280(H)mm	

Remark:

標配：專用桌板、腳架、鈕扣壓腳、底板、大小鋸齒板及12組標準送扣載具使用
選配：3孔扣孔、對位器、雷射燈對位器

*鈕扣尺寸定義：

超小鈕扣尺寸Φ8~10mm，小鈕扣尺寸Φ10~20mm，大鈕扣尺寸Φ20~26mm
鈕扣夾爪適用範圍Φ8~26mm，但縫製超小或大鈕扣時，需視鈕扣厚度與凸面的情況

**大小鋸齒板選用建議

使用鈕扣	尺寸:Φ8~16mm	尺寸:Φ16~25mm
	小鈕扣鋸齒板	大鈕扣鋸齒板

Remark:

Standard: Professional table, All Set of Button Presser Foot, Small/Big Button
Serrated Plate and Bottom Plate, 12 Sets of Standard Button Carrier.
Option: 3-Holed of Button Carrier, Button Spacer, Button Spacer with Laser Light.

*The definition of Button Size:

Extra small button size is Φ8~10mm, small button size is Φ10~20mm, and large button size is Φ20 ~ 26 mm. Basically, Button clamp of machine head is applied for Φ8~26mm, but that sewing extra/ large button size are depend on its thickness and convexity.

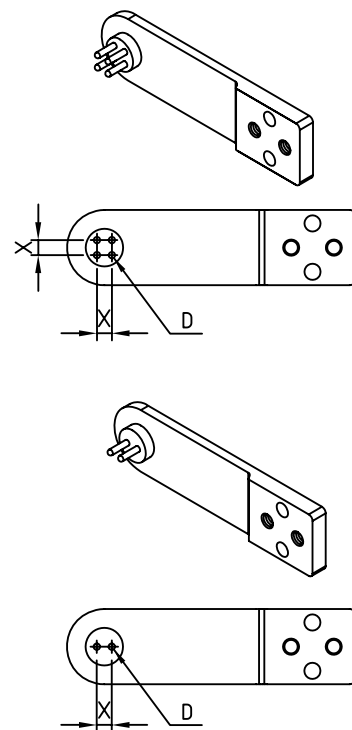
**Suggestion of selecting the serrated plate

Button	Size: Φ8~16mm	Size: Φ16~25mm
	The small serrated plate	The Big serrated plate

送卸載具模組規格

Button Carrier Specification

零件編碼 Codea of Parts	X $+0.05$ -0.05	D $+0.05$ -0.05	鈕扣孔數 Button Holes
ABF118	2.2	1.0	4
ABF119	2.2	1.0	2
ABF120	2.4	1.2	4
ABF121	2.4	1.2	2
ABF269	2.6	1.2	4
ABF270	2.6	1.2	2
ABF122	2.8	1.2	4
ABF123	2.8	1.2	2
ABF124	3.2	1.2	4
ABF125	3.2	1.2	2
ABF126	3.6	1.2	4
ABF127	3.6	1.2	2



鈕扣型狀

Button Shape

適用鈕扣的形狀 Available Shape of Button	不適用鈕扣的形狀 Unavailable Shape of Button
<p>兩面須有明顯區別(落差)，凹或凸須在1.2mm差距以上，以順利判定正反面</p> <p>Two sides must be obviously different (Dissimilarity)For determining the positive or negative side, the convex or concave must above 1.2mm gap.</p>	<p>兩面皆相同之鈕扣，機器無法判別</p> <p>Machine can' t work if one side of the button is identical to the other.</p>

