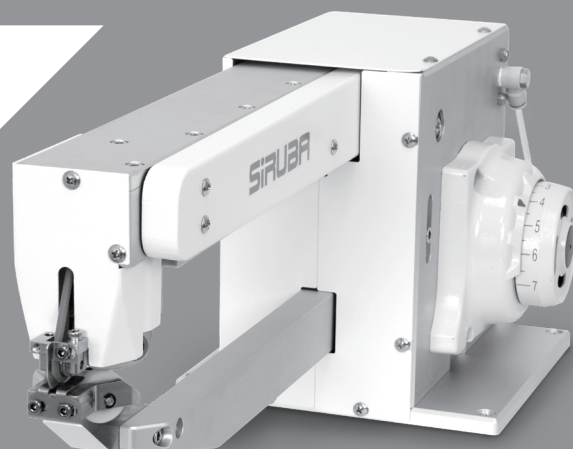


SIRUBA

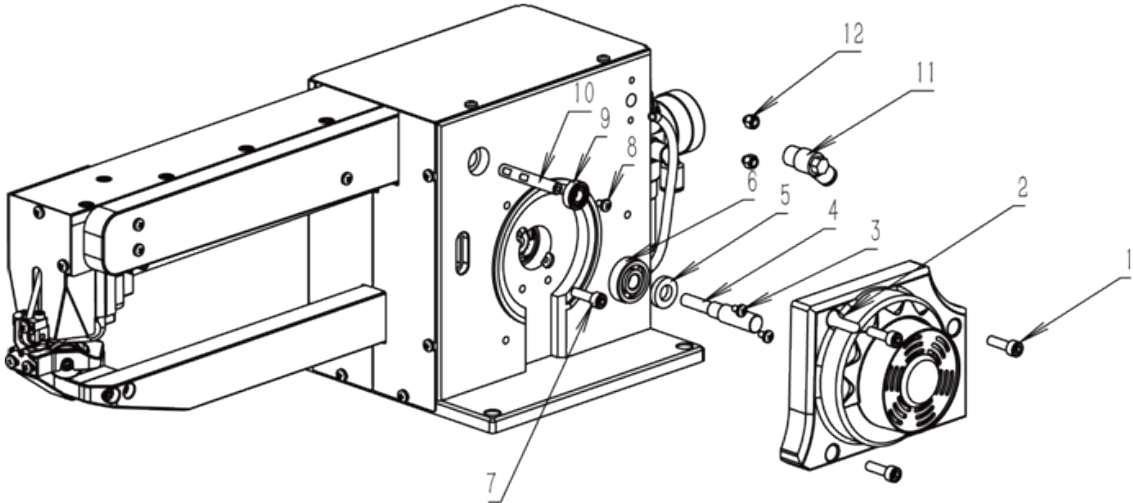
零件圖

PARTS LIST

■ ASO-FPM100



| | | | | |
|---|------------|-------------|-----------------|------------|
| <div>SIRUBA</div> <div>PARTS LIST</div> | Series | Parts Group | Subclass Remark | Page |
| | ASO-FPM100 | | | 1 / 1 |
| | | | | Date |
| | | | | 2023/12/15 |



| | | | | |
|---|------------|-------------|-----------------|------------|
| <div>SIRUBA</div> <div>PARTS LIST</div> | Series | Parts Group | Subclass Remark | Page |
| | ASO-FPM100 | | | 1 / 1 |
| | | | | Date |
| | | | | 2023/12/15 |

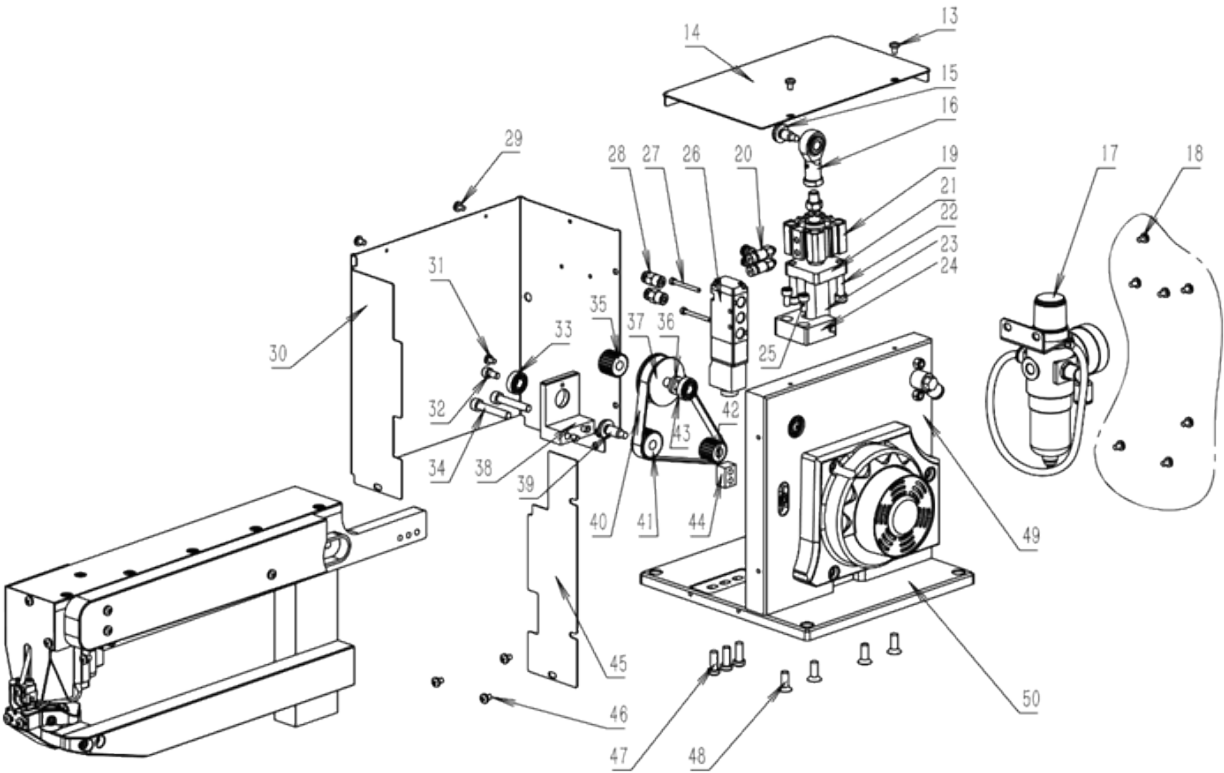
A

B

C

D

E



| SiRUBA SEQUENCE LIST | | Series | Parts Group | Subclass Remark | Page |
|--------------------------------|-----|------------|---------------------------------|-----------------|------------|
| | | ASO-FPM100 | | | 1 / 1 |
| | | | | | Date |
| | | | | | 2023/12/15 |
| 項目號 | 零件號 | 說明 | | | |
| 13 | J20 | 蓋板螺絲 | Cover screws | | |
| 14 | B01 | 箱殼頂蓋 | Case top cover | | |
| 15 | J06 | 氣缸組凸肩螺絲 | Cylinder bank shoulder screws | | |
| 16 | Q05 | 關節軸承 | Spherical bearings | | |
| 17 | Q09 | 氣源處理器 | Service Processor | | |
| 18 | J21 | 蓋板螺絲 | Cover screws | | |
| 19 | Q03 | 氣缸 | cylinder | | |
| 20 | Q04 | 氣缸限流閥 | Cylinder flow limiting valve | | |
| 21 | C07 | 氣缸 A 座 | Cylinder A seat | | |
| 22 | J29 | 氣缸緊定螺絲 | Cylinder set screws | | |
| 23 | C06 | 氣缸 AB 座連接杆 | Cylinder AB seat connecting rod | | |
| 24 | C05 | 氣缸 B 座 | Cylinder B seat | | |
| 25 | Q08 | 氣缸 B 座緊定螺絲 | Set screws for cylinder B seat | | |
| 26 | Q07 | 電磁閥 | Solenoid valves | | |
| 27 | J05 | 電磁閥緊定螺絲 | Solenoid valve set screw | | |
| 28 | Q06 | 電磁閥 AB 埠接頭 | Solenoid valve AB port fitting | | |
| 29 | J22 | 蓋板螺絲 | Cover screws | | |
| 30 | B02 | 箱殼側蓋 | Case side covers | | |
| 31 | J23 | 2 號軸承緊定螺絲 | No. 2 bearing set screw | | |
| 32 | J34 | A 軸頂邊螺絲 | A-axis top edge screws | | |
| 33 | R08 | 2 號軸承 | No. 2 bearing | | |
| 34 | J07 | 2 號軸承座緊定螺絲 | No. 2 housing set screw | | |
| 35 | T04 | 3 號同步輪 | No. 3 synchronous wheel | | |
| 36 | G03 | 2 號波峰墊 | No. 2 crest pad | | |
| 37 | T03 | 2 號同步輪 | No. 2 synchronous wheel | | |
| 38 | C04 | 2 號軸承固定座 | No. 2 bearing mount | | |
| 39 | J08 | 漲緊輪凸肩螺絲 | Tensioner shoulder screws | | |
| 40 | D01 | 1 號同步帶 | No. 1 timing belt | | |
| 41 | T02 | 漲緊輪 | Tensioner | | |
| 42 | T01 | A 軸 1 號同步輪 | A-axis No. 1 synchronous wheel | | |
| 43 | R09 | 2 號軸承 | No. 2 bearing | | |
| 44 | C03 | 漲緊輪調整塊 | Tensioner adjustment block | | |
| 45 | B03 | 箱殼前蓋 | Case front cover | | |
| 46 | J24 | 蓋板螺絲 | Cover screws | | |
| 47 | J09 | A 柱緊定螺絲 | A-pillar set screws | | |
| 48 | J10 | 電機板緊定螺絲 | Set screws for motor plates | | |
| 49 | C02 | 電機固定板 | Motor fixing plate | | |
| 50 | C18 | 底板 | motherboard | | |

| | | | | |
|---------------------------------|-------------------|-------------|-----------------|------------|
| SIRUBA PARTS LIST | Series | Parts Group | Subclass Remark | Page |
| | ASO-FPM100 | | | 1 / 1 |
| | | | | Date |
| | | | | 2023/12/15 |

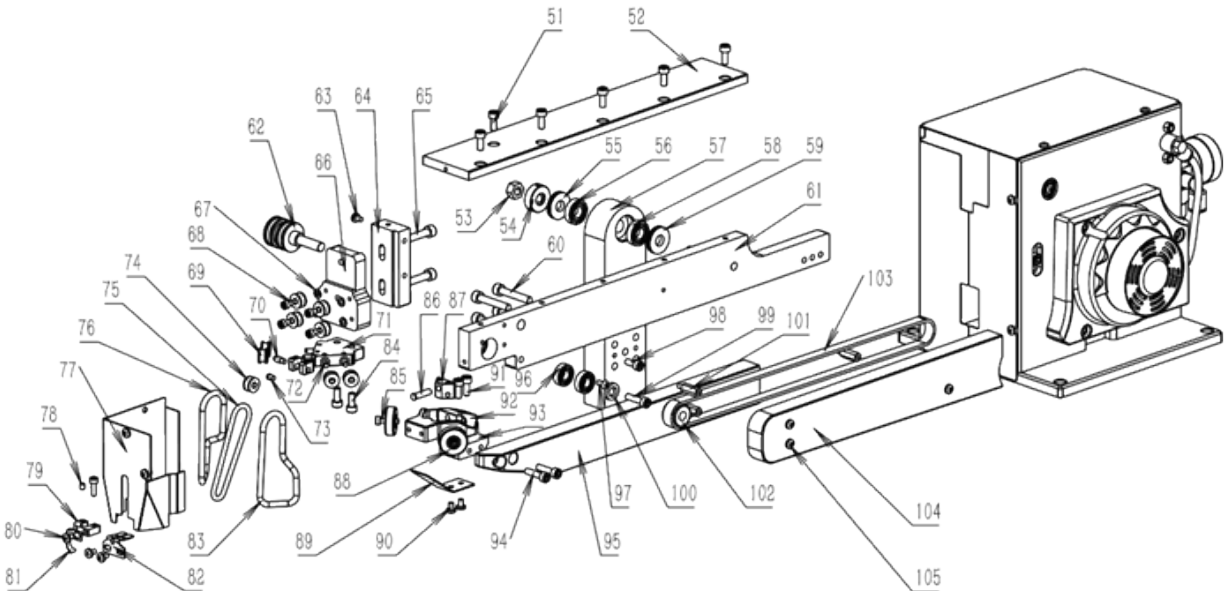
A

B

C

D

E



| SIRUBA SEQUENCE LIST | | Series | Parts Group | Subclass Remark | Page |
|--------------------------------|-----|------------|------------------------------|-----------------|------------|
| | | ASO-FPM100 | | | 1 / 1 |
| | | | | | Date |
| | | | | | 2023/12/15 |
| 項目號 | 零件號 | 說明 | | | |
| 51 | J11 | 上臂頂蓋緊定螺絲 | Upper arm top cover screws | | |
| 52 | C08 | 上臂頂蓋 | Upper arm top cover | | |
| 53 | J18 | 上臂 1 號緊定螺母 | No. 1 nut on the upper arm | | |
| 54 | Z03 | 上臂 2 號緊定螺母 | No. 2 nut on the upper arm | | |
| 55 | R04 | 4 號軸承 | No. 4 bearing | | |
| 56 | R07 | 7 號軸承 | No. 7 bearing | | |
| 57 | C09 | A 柱 | A-pillar | | |
| 58 | R12 | 7 號軸承 | No. 7 bearing | | |
| 59 | R04 | 4 號軸承 | No. 4 bearing | | |
| 60 | J13 | 下臂緊定螺絲 | Set screws on the lower arm | | |
| 61 | C10 | 上臂板 | Upper arm plate | | |
| 62 | Z04 | C 軸 | C-axis | | |
| 63 | J25 | 蓋板螺絲 | Cover screws | | |
| 64 | C11 | 上臂 A 座 | Upper arm block A | | |
| 65 | J12 | 上臂 B 座緊定螺絲 | Upper arm B seat screws | | |
| 66 | C12 | 上臂 B 座 | Upper arm block B | | |
| 67 | J16 | 5 號軸承墊 | No. 5 bearing pads | | |
| 68 | J15 | 5 號軸承緊定螺絲 | No. 5 bearing set screw | | |
| 69 | R11 | 5 號軸承 | No. 5 bearing | | |
| 70 | Z06 | 6 號軸承左銷 | No. 6 bearing left pin | | |
| 71 | C13 | 上臂 C 座 | Upper arm C seat | | |
| 72 | Z08 | 5 號軸承固定銷 | No. 5 bearing retaining pin | | |
| 73 | Z07 | 6 號軸承右銷 | No. 6 bearing right pin | | |
| 74 | R06 | 6 號軸承 | No. 6 bearing | | |
| 75 | D04 | 前圓帶 | Front round band | | |
| 76 | D03 | 後圓帶 | Rear round belt | | |
| 77 | B04 | 前面蓋 | Front cover | | |
| 78 | B06 | 左銷緊定螺絲 | Left-pin set screw | | |
| 79 | Z05 | 中分刀座 | Split tool holder | | |
| 80 | J26 | 中分刀緊定螺絲 | Set screws with split knife | | |
| 81 | B09 | 中分刀 | Split knife | | |
| 82 | B05 | 中分導向片 | Divide the guide piece | | |
| 83 | D05 | 後圓帶 | Rear round belt | | |
| 84 | J04 | C 座緊定螺絲 | C-seat set screw | | |
| 85 | J15 | 下扒輪緊定螺絲 | Lower screw wheels | | |
| 86 | Z09 | 擺動塊中心銷 | Oscillating block center pin | | |
| 87 | C14 | 電機固定板 | Lower arm A seat swing block | | |
| 88 | Z10 | 底板 | Lower arm A seat chop wheel | | |
| 1 | 2 | 3 | 4 | 5 | |

| | | | | |
|---------------------------------|------------|-------------|-----------------|--------------------|
| SIRUBA PARTS LIST | Series | Parts Group | Subclass Remark | Page |
| | ASO-FPM100 | | | 1 / 1 |
| | | | | Date 2023/10/11 |

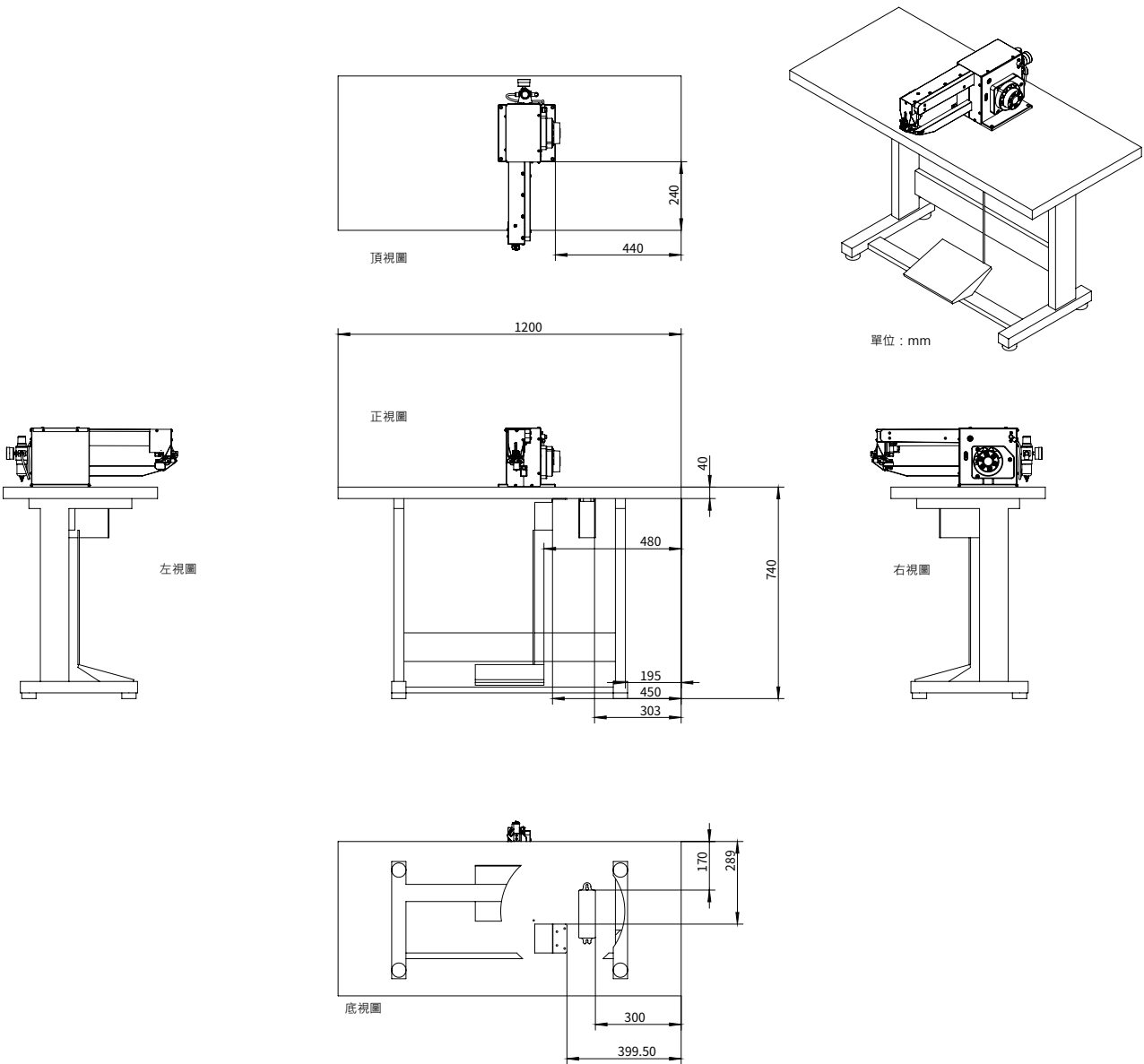
A

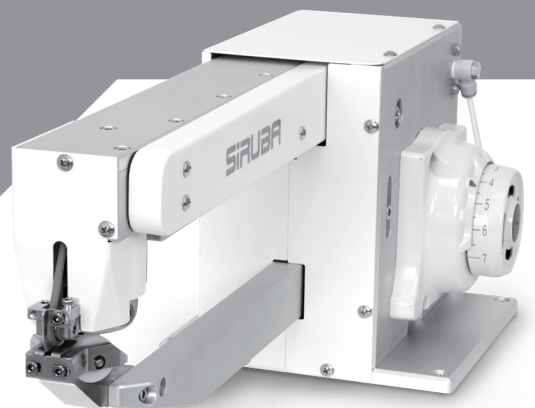
B

C

D

E





高林股份有限公司
KAULIN MFG. CO., LTD.

由於對產品的改良及更新，本產品使用說明書中與零件圖之產品及外觀的修改恕不事先通知！
The specification and/or the equipment described in the instruction book and parts list
are subject to change because of modification with out previous notice
ASO-FPM100.DEC.2023