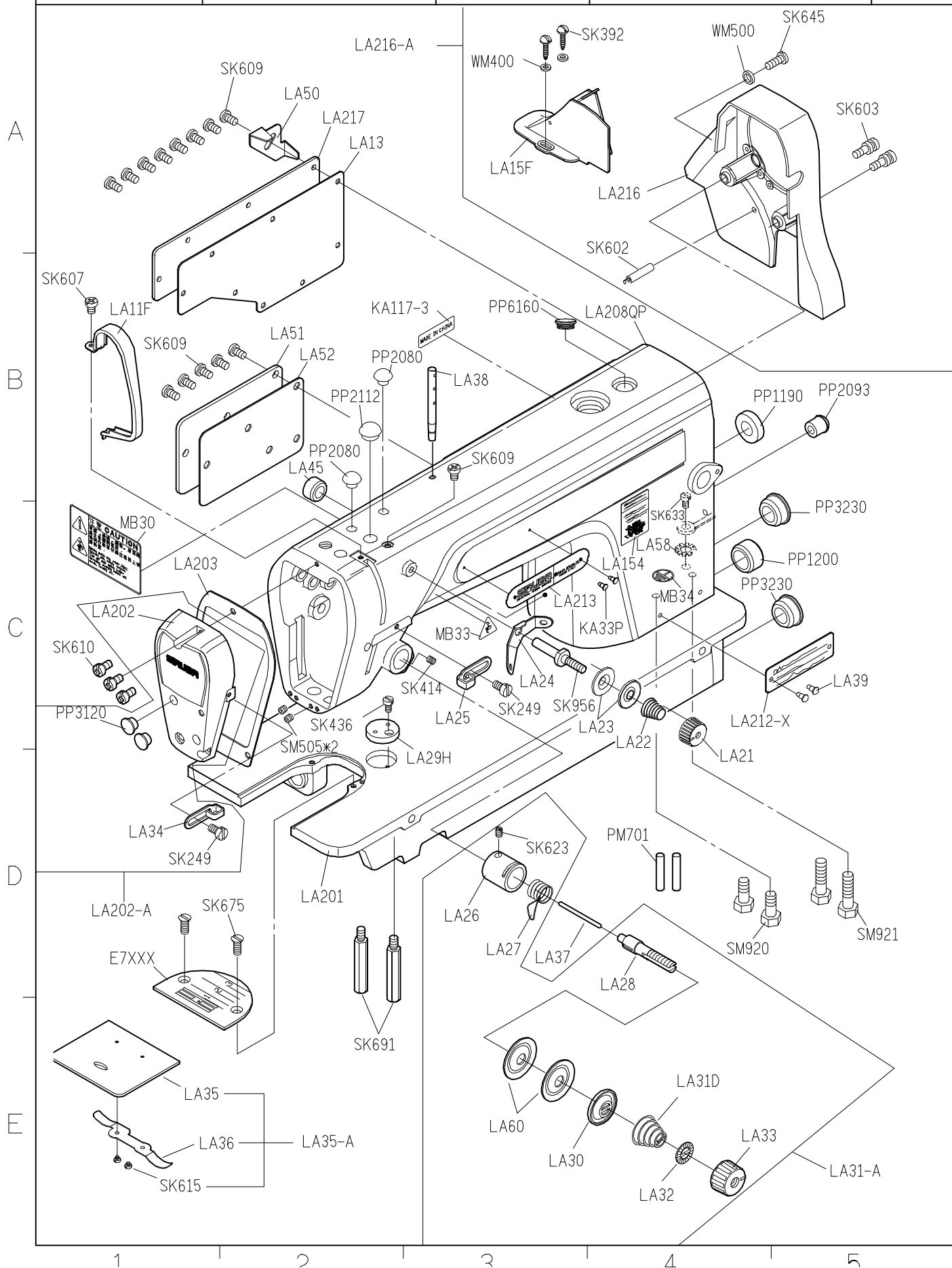
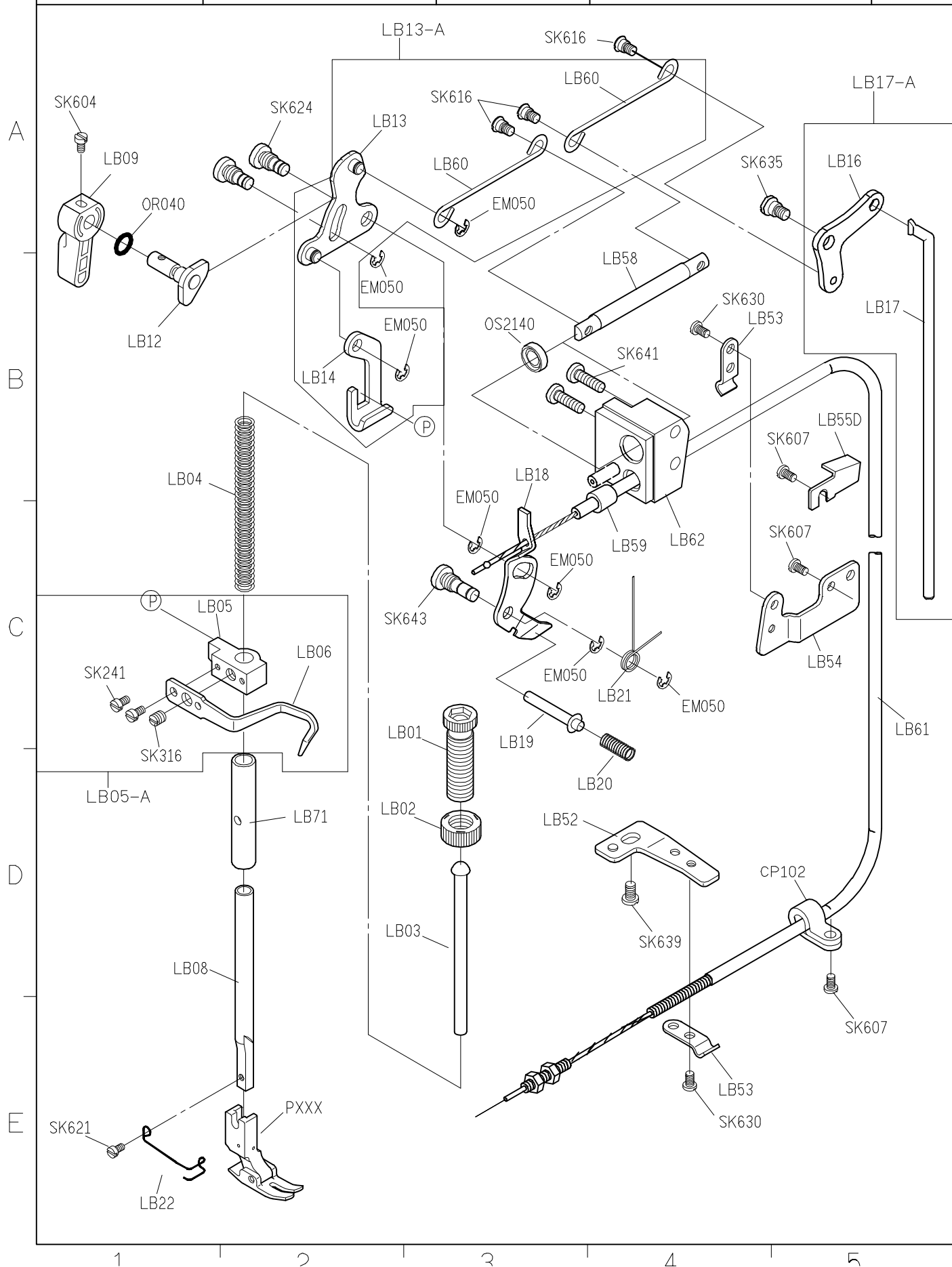


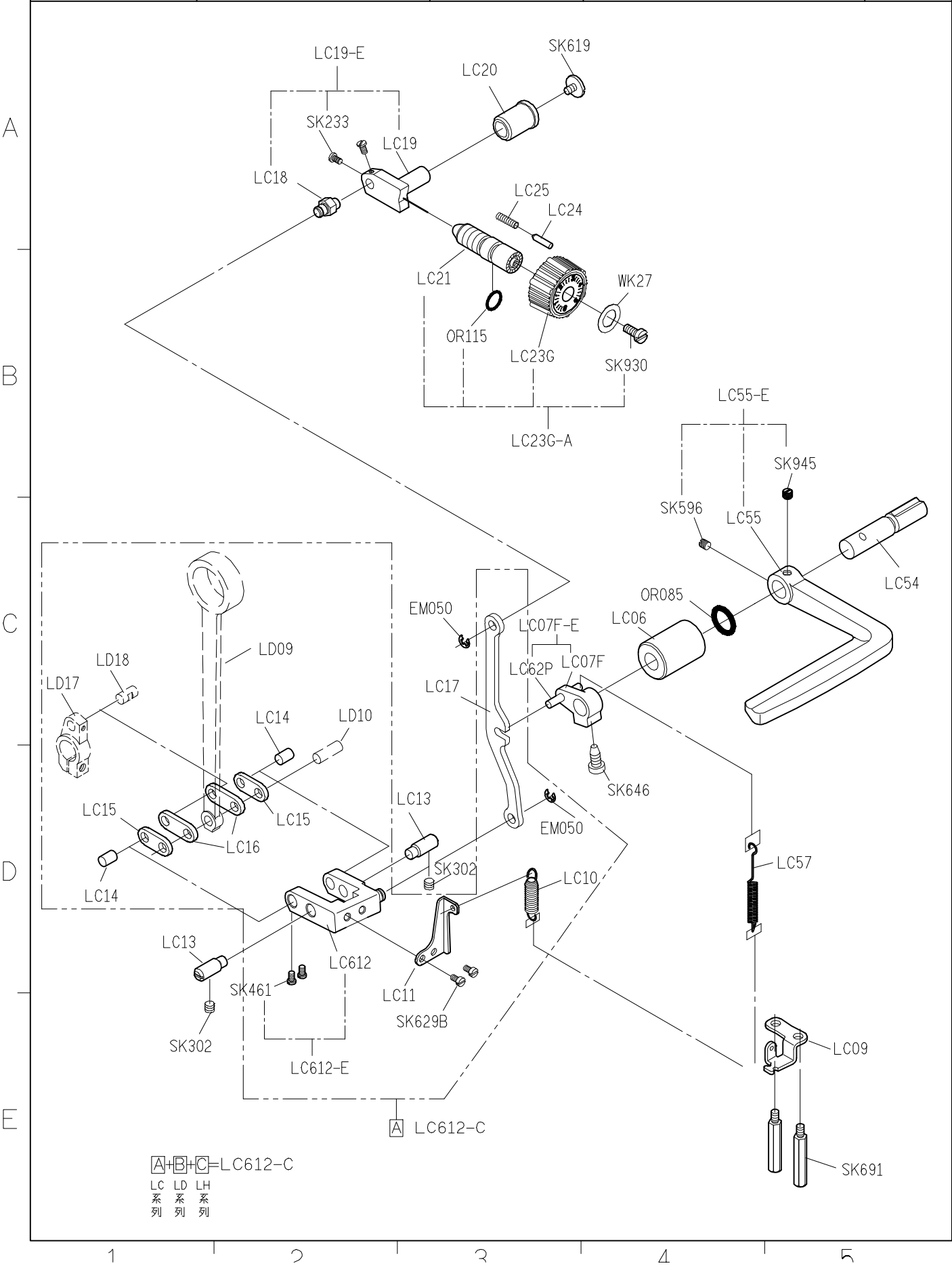
SIRUBA PARTS LIST	Series	Parts Group	Subclass / Remark	Page
	L918U-DM1	LA		1/1
				Date
				2012/11/01



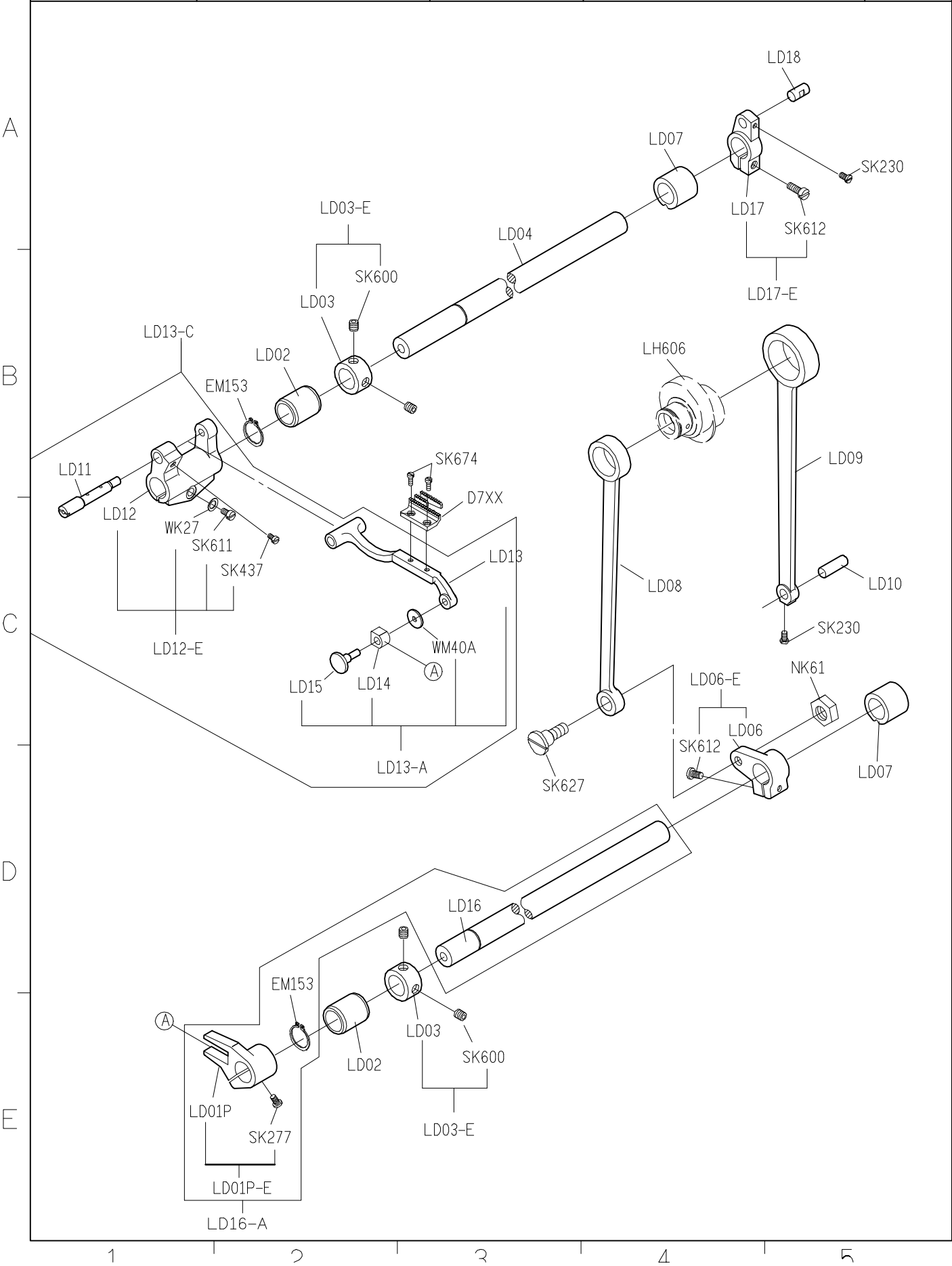
SIRUBA PARTS LIST	Series	Parts Group	Subclass / Remark	Page
	L918U-DM1	LB		1/1
				Date
				2012/11/01



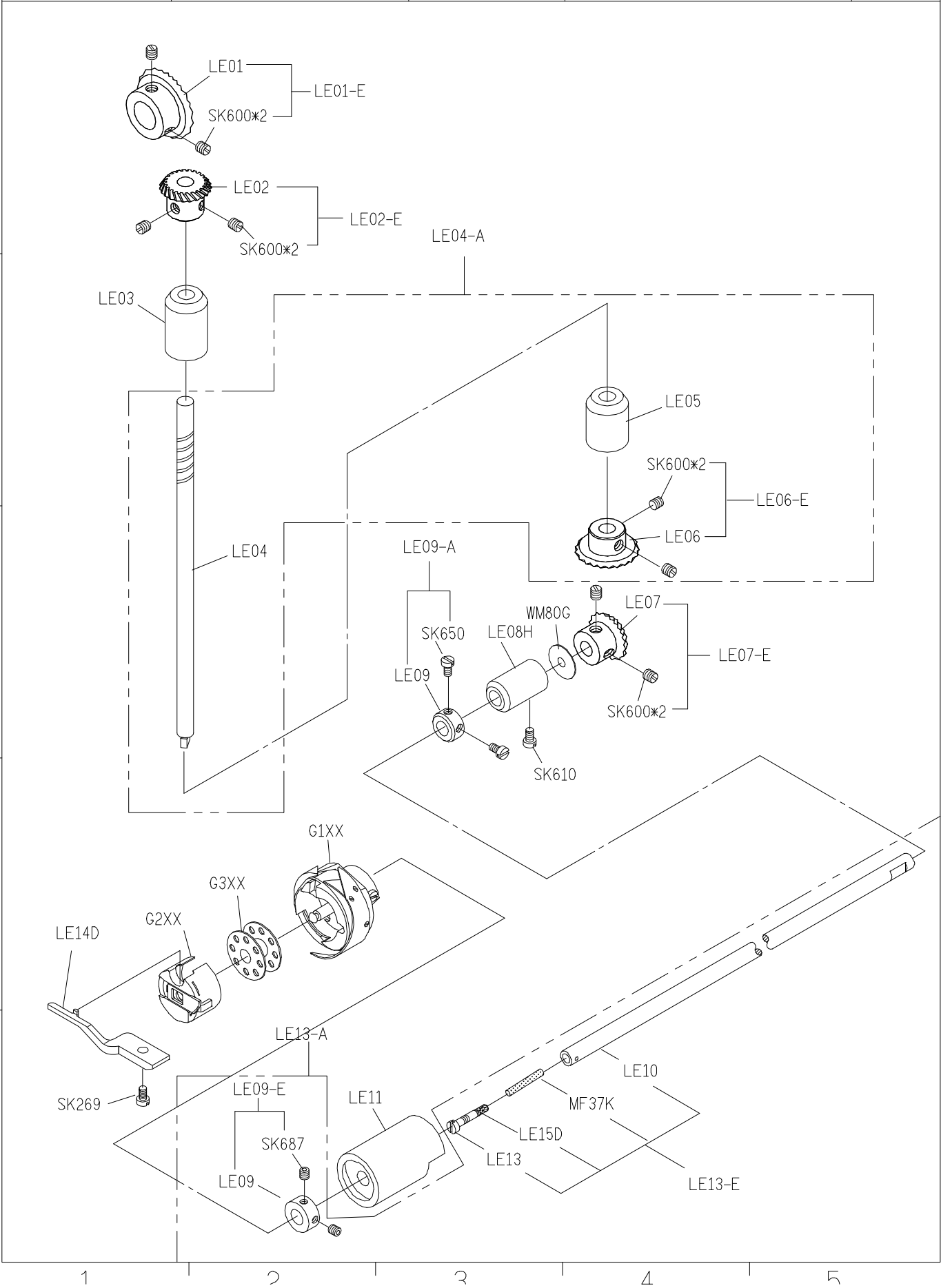
SIRUBA PARTS LIST	Series	Parts Group	Subclass / Remark	Page
	L918U-DM1	LC		1/1
				Date
				2015/2/5



SIRUBA PARTS LIST	Series	Parts Group	Subclass / Remark	Page
	L918U-DM1	LD		1/1
				Date
				2012/11/01



SIRUBA PARTS LIST	Series	Parts Group	Subclass / Remark	Page
	L918U-DM1	LE		1/1
				Date
				2015/07/28



SIRUBA PARTS LIST	Series	Parts Group	Subclass / Remark	Page
	L918U-DM1	LG		1/1
				Date
				2012/11/01

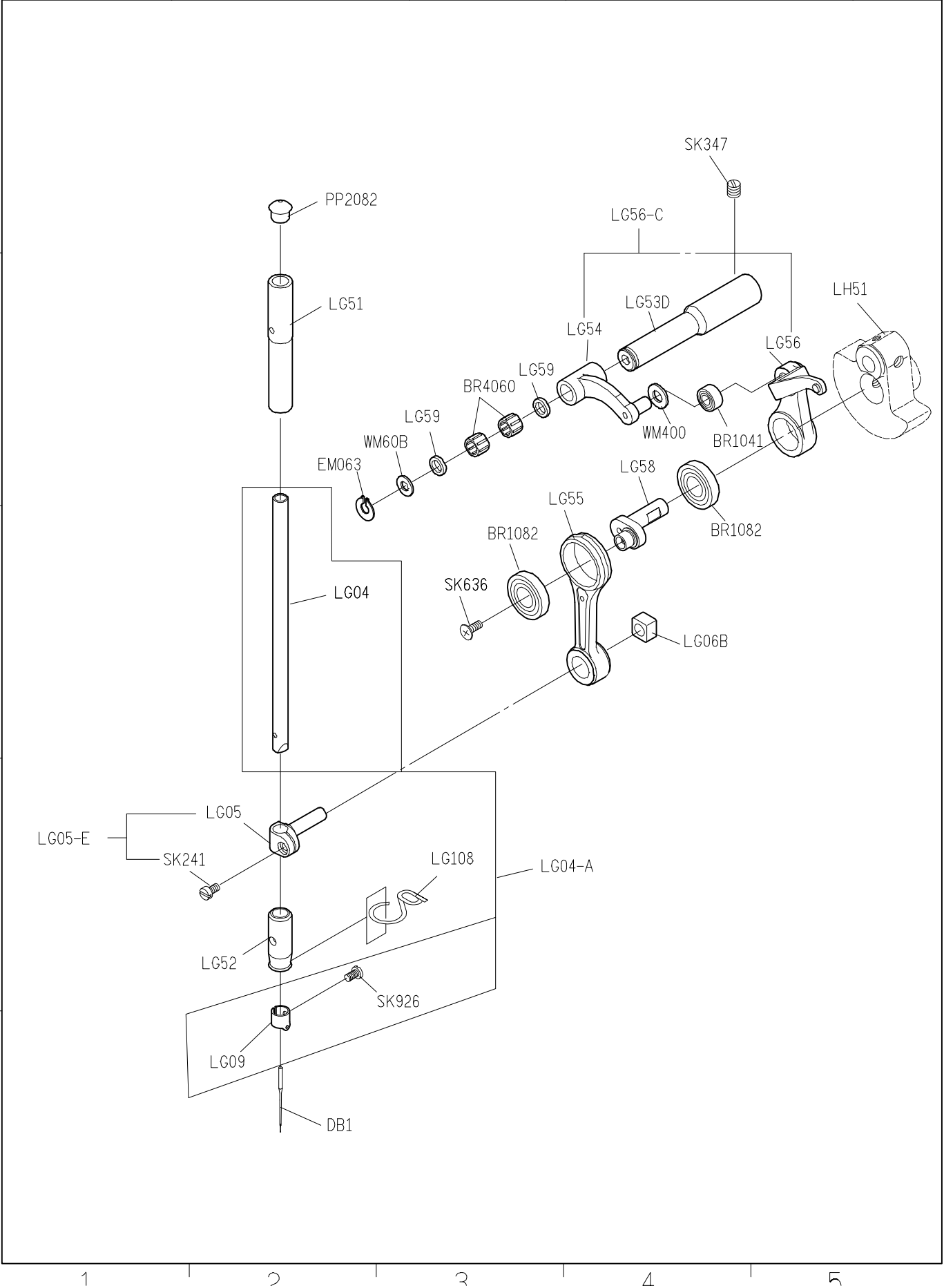
A

B

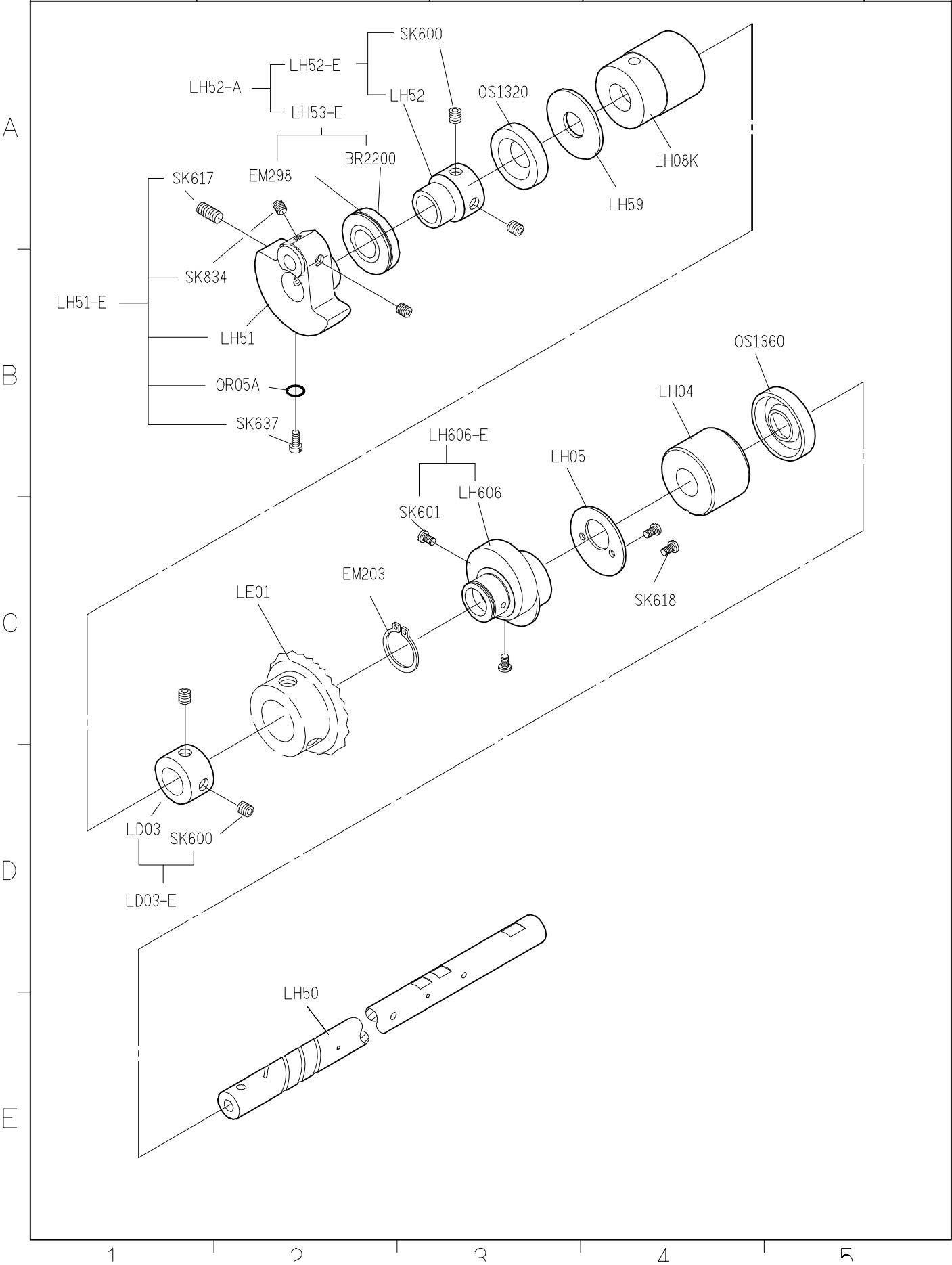
C

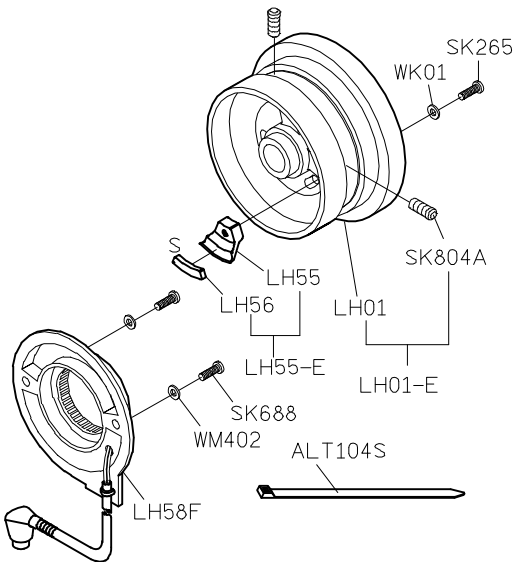
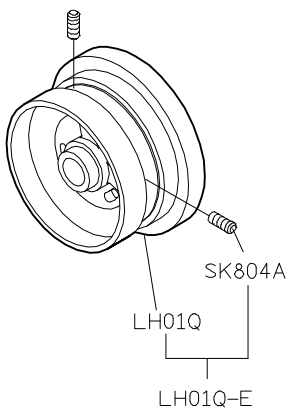
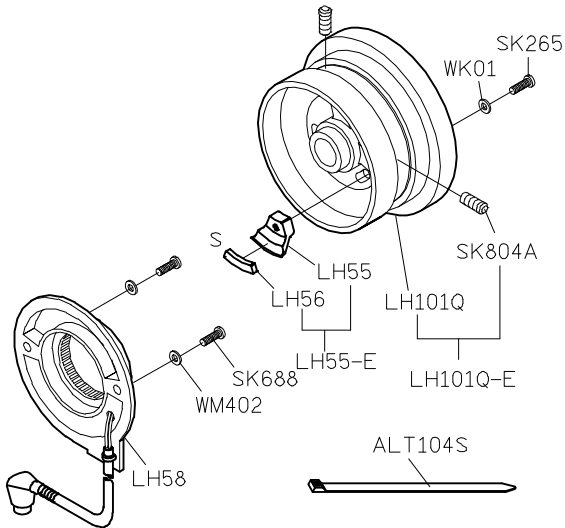
D

E



SIRUBA PARTS LIST	Series	Parts Group	Subclass / Remark	Page
	L918U-DM1	LH		1/2
				Date
				2012/11/01



SIRUBA PARTS LIST		Series	Parts Group	Subclass / Remark	Page	
		L918U-DM1	LH		2/2	
					Date	
					2012/11/01	
H 廠牌馬達	擺動式切刀					
	LH01-A1	LH101-A1				
其他廠牌馬達(可加後拉輪)						
	LH01Q-E	LH101Q-A1				
		1	2	3	4	5

<div> <div>SIRUBA</div> <div>PARTS LIST</div> </div>	Series	Parts Group	Subclass / Remark	Page
	L918U-DM1	LL		1/1
				Date
				2015/03/24

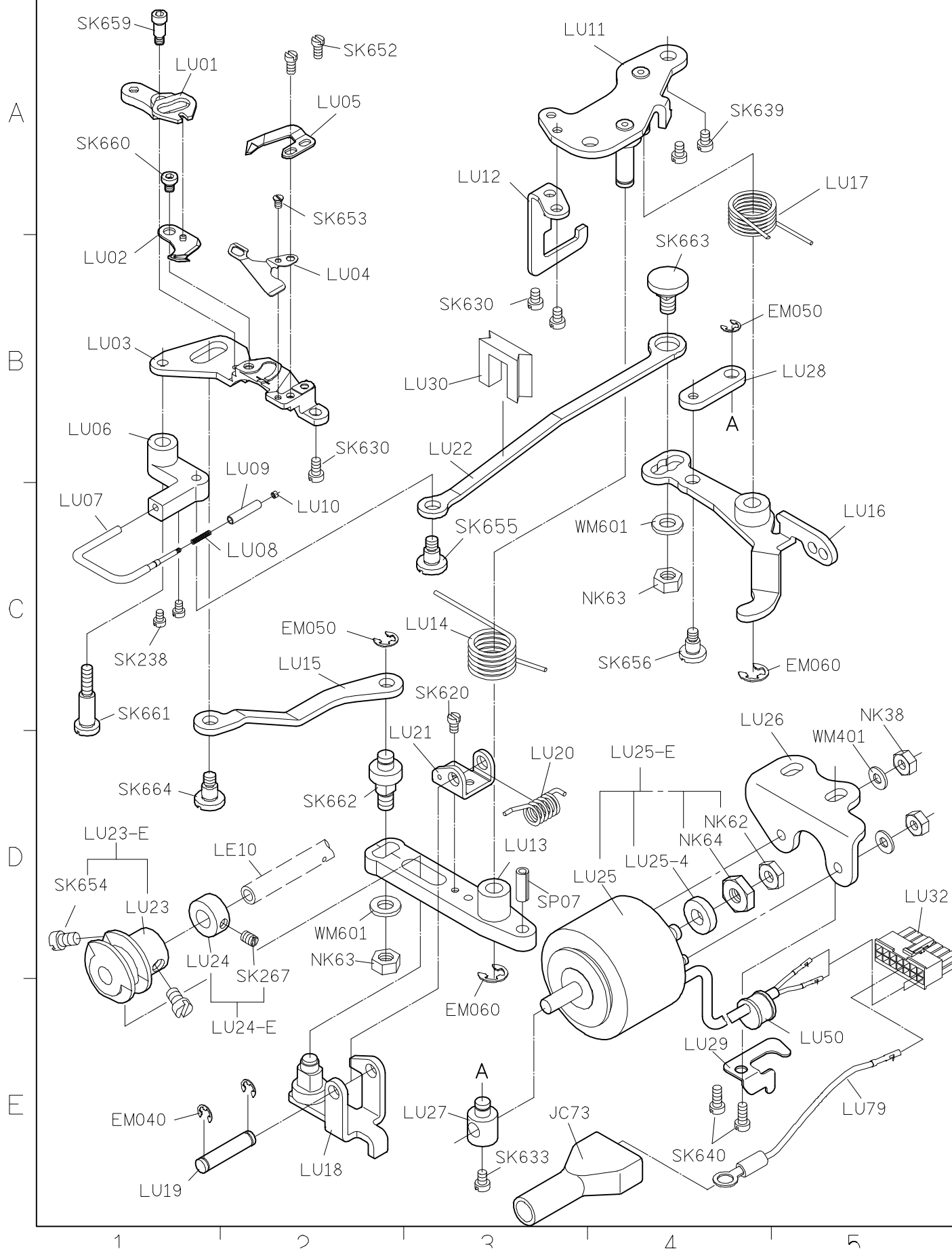
The diagram illustrates the assembly of the LL series pump. The components are organized into five main assembly stages:

- Stage 1:** Initial assembly of the pump head (LL10) with the impeller (LL11) and various seals (SK639, SK634, SK628, SK647) and O-rings (LL09, LL17, LL16D, LL30, LL13, LL14).
- Stage 2:** Installation of the pump housing (LL21) and the pump body (LL22) with the impeller (LL11) and various seals (SK639, SK634, SK628, SK647) and O-rings (LL09, LL17, LL16D, LL30, LL13, LL14).
- Stage 3:** Installation of the pump housing (LL21) and the pump body (LL22) with the impeller (LL11) and various seals (SK639, SK634, SK628, SK647) and O-rings (LL09, LL17, LL16D, LL30, LL13, LL14).
- Stage 4:** Installation of the pump housing (LL21) and the pump body (LL22) with the impeller (LL11) and various seals (SK639, SK634, SK628, SK647) and O-rings (LL09, LL17, LL16D, LL30, LL13, LL14).
- Stage 5:** Final assembly of the pump housing (LL21) and the pump body (LL22) with the impeller (LL11) and various seals (SK639, SK634, SK628, SK647) and O-rings (LL09, LL17, LL16D, LL30, LL13, LL14).

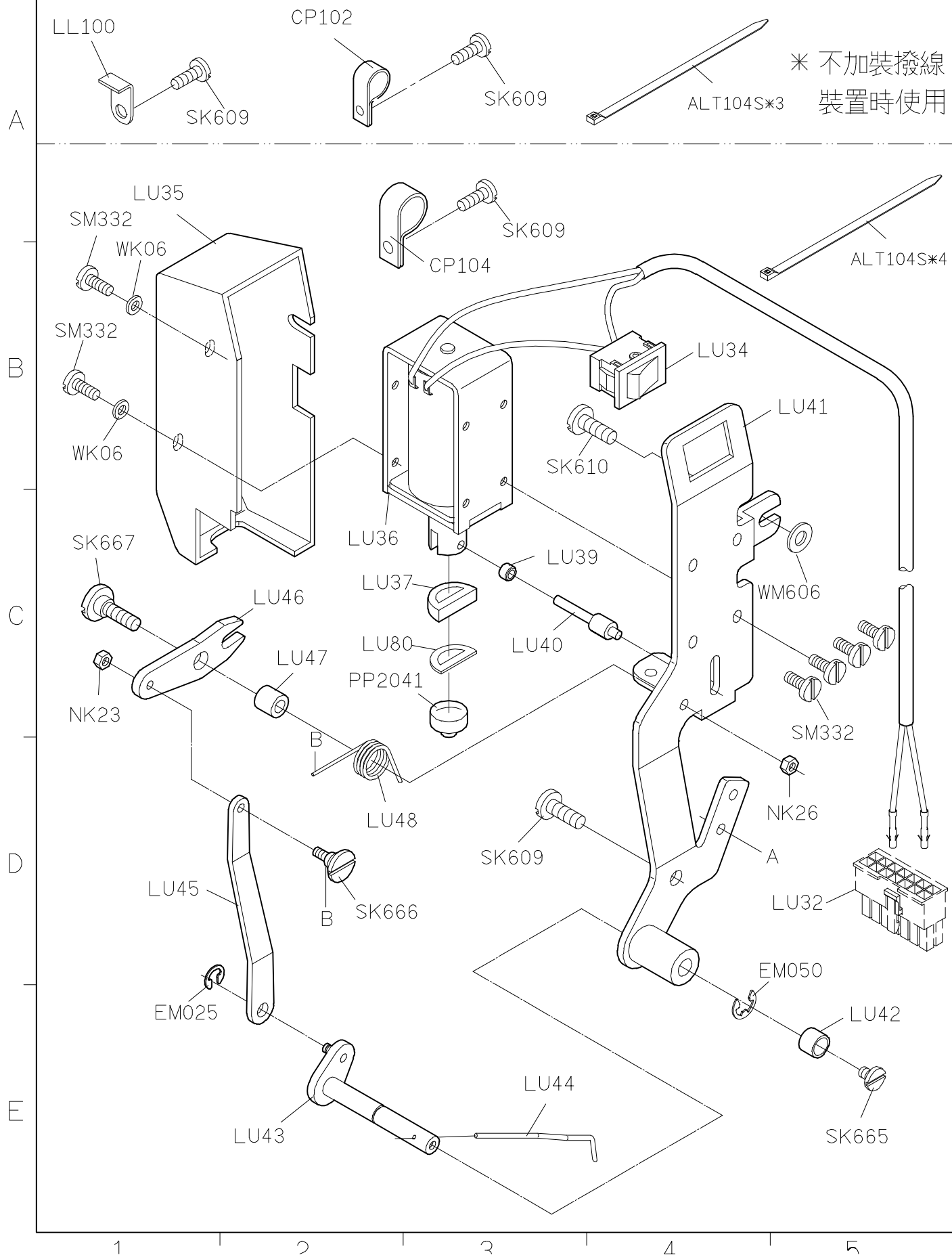
Key components and their part numbers include:

- WK23, SK639, LL09, LL50, LL10, SK628, LL17, LL16D, SK634, LL01F, KC58, ALT087S, LL04-1, LL04-3, LL02, LL03, LL06, LL07, LU87, LL11-A2, LL13, LL14, SK647, LL104, OP222, OP214, LL106, LL105-A, LL105, SK501, LL21-A, LL23, LL22, LL21, LM23-A, LM22, LM23, EM100, SM6006, NM610, SM697, SM607, LM24.

SIRUBA PARTS LIST	Series	Parts Group	Subclass / Remark	Page
	L918U-DM1	LU		1/7
				Date
				2012/11/01



SIRUBA PARTS LIST	Series	Parts Group	Subclass / Remark	Page
	L918U-DM1	LU		2/7
				Date
				2012/11/01



SIRUBA PARTS LIST	Series	Parts Group	Subclass / Remark	Page
	L918U-DM1	LU		4/7
				Date
				2012/11/01

LU64F-A1

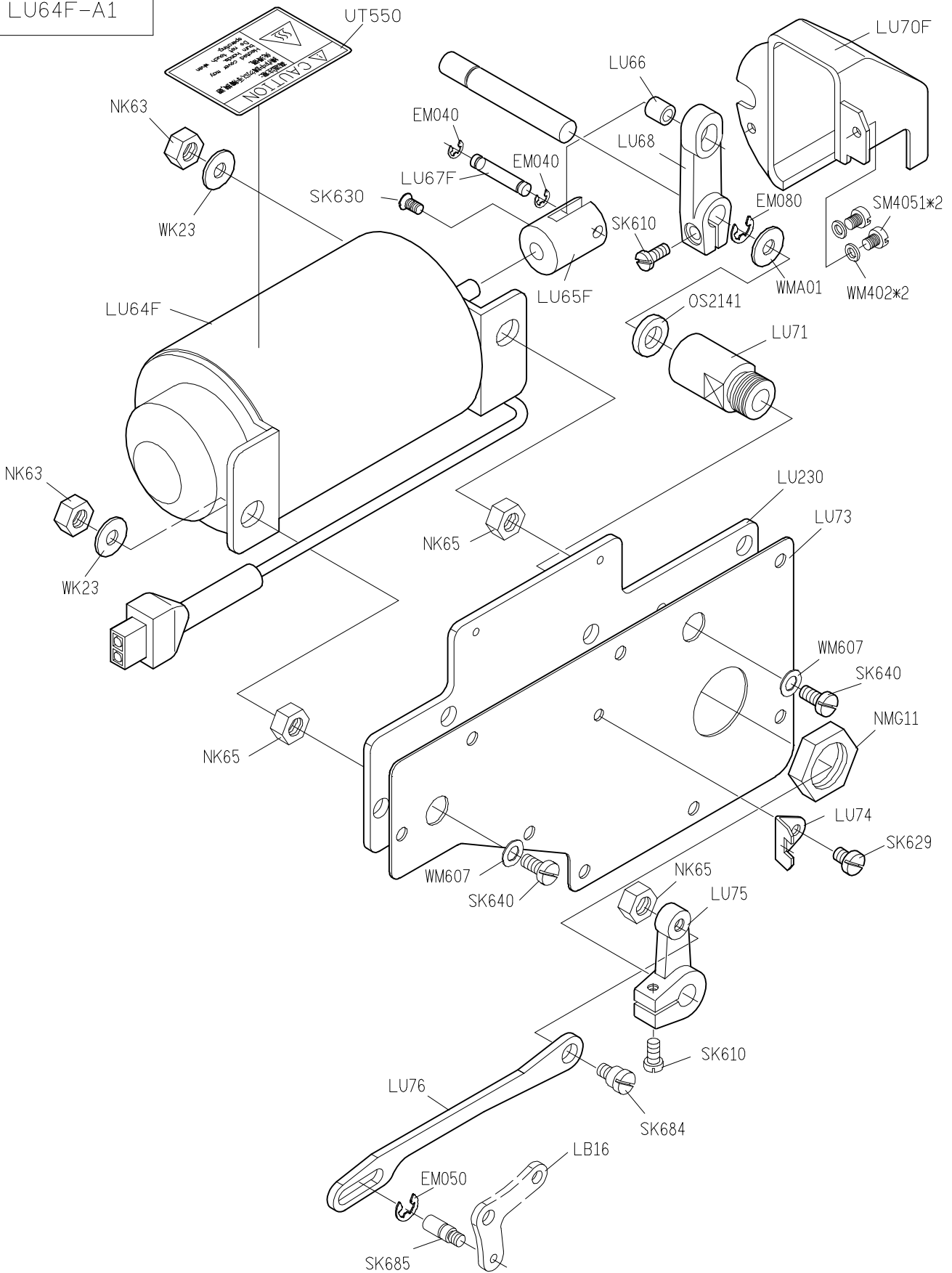
A

B

C

D

E



1

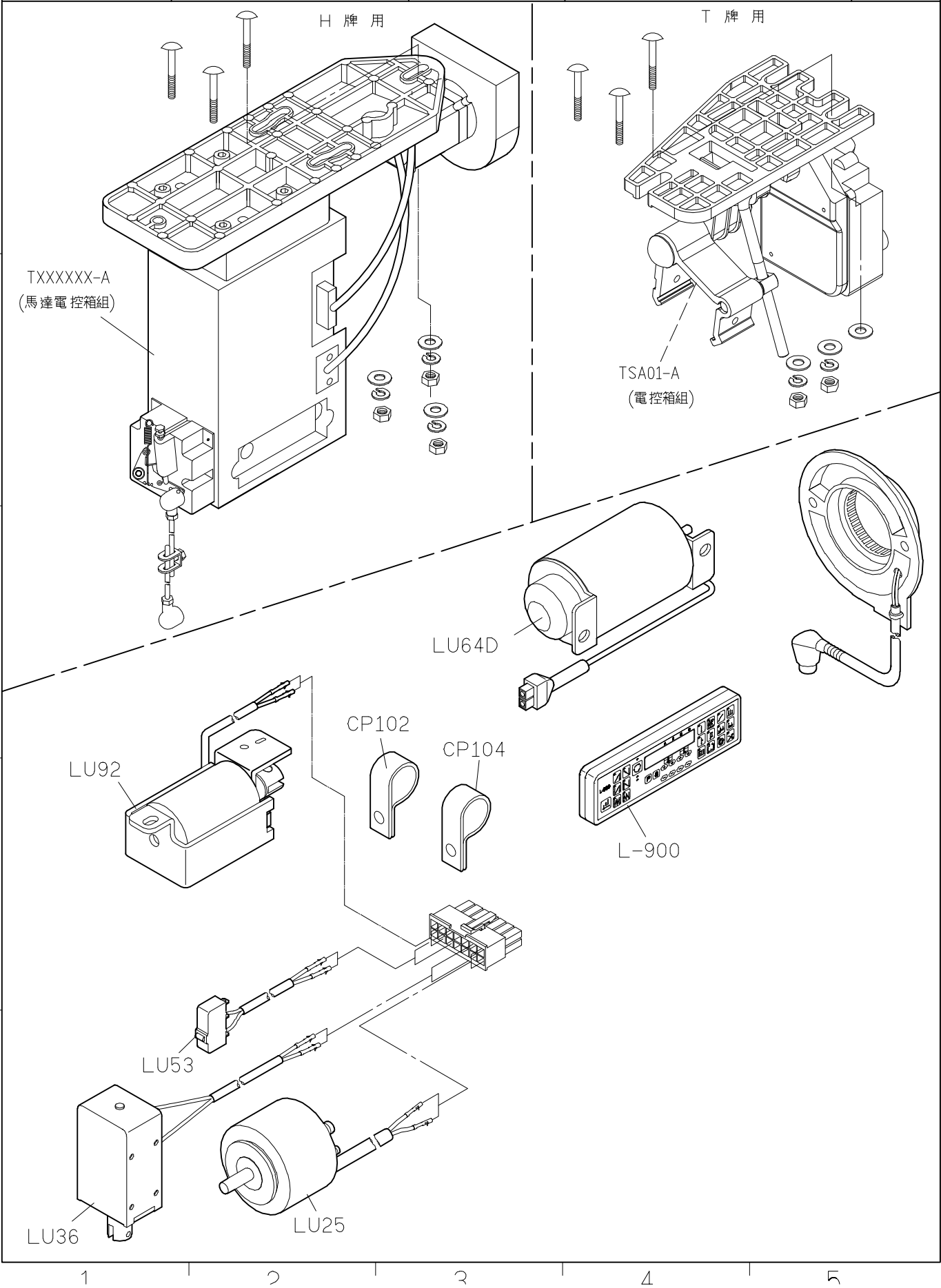
2

3

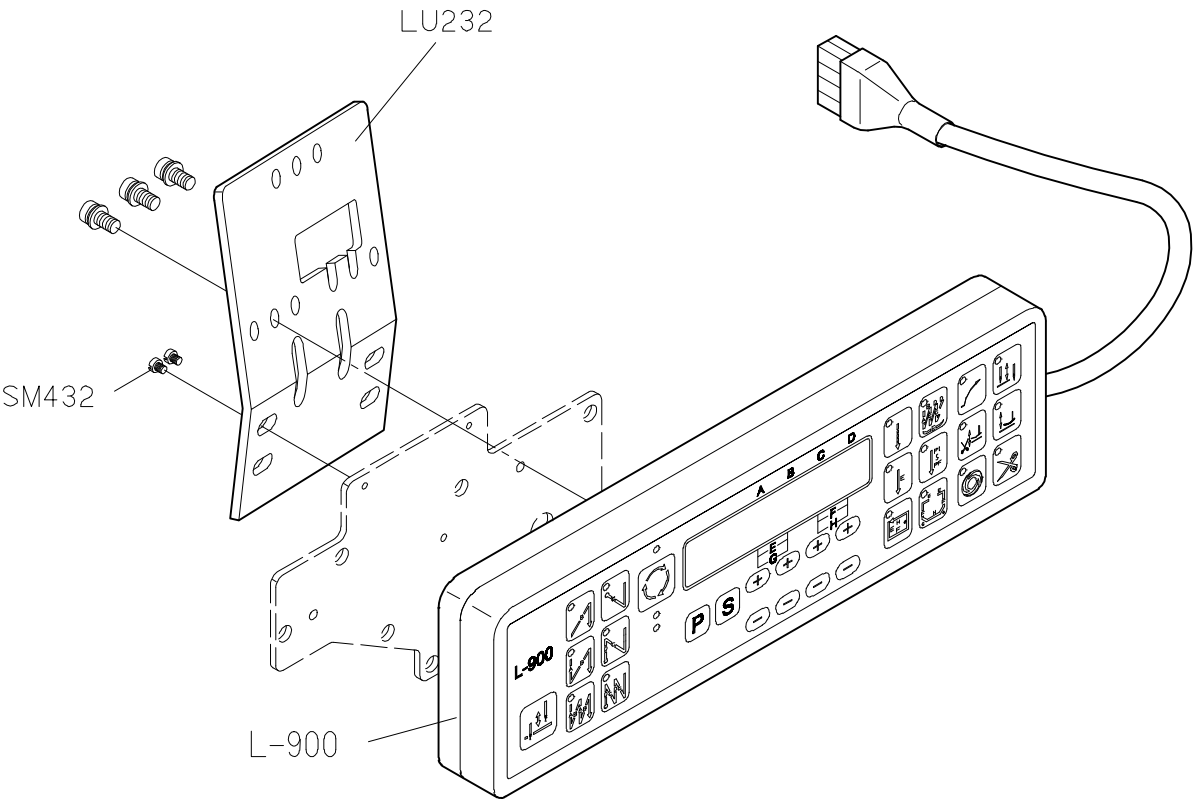
4

5

SIRUBA PARTS LIST	Series	Parts Group	Subclass / Remark	Page
	L918U-DM1	LU		5/7
				Date
				2012/11/01



SIRUBA PARTS LIST	Series	Parts Group	Subclass / Remark	Page
	L918U-DM1	LU		6/7
				Date
				2012/11/01



代碼 NO.	操作面板 Control Panel	代碼 NO.	自動切線 Auto THREAD Trimmer	快速倒縫 Reverse Feeding	撥線桿 Wiper	自動抬押具 Auto Lifer
1	L-900	0	v	v	—	—
		1	v	v	V	—
		2	v	v	—	v
		3	v	v	v	v

SIRUBA PARTS LIST	Series	Parts Group	Subclass / Remark	Page
	L918U-DM1	LU		7/7
				Date
				2012/12/20

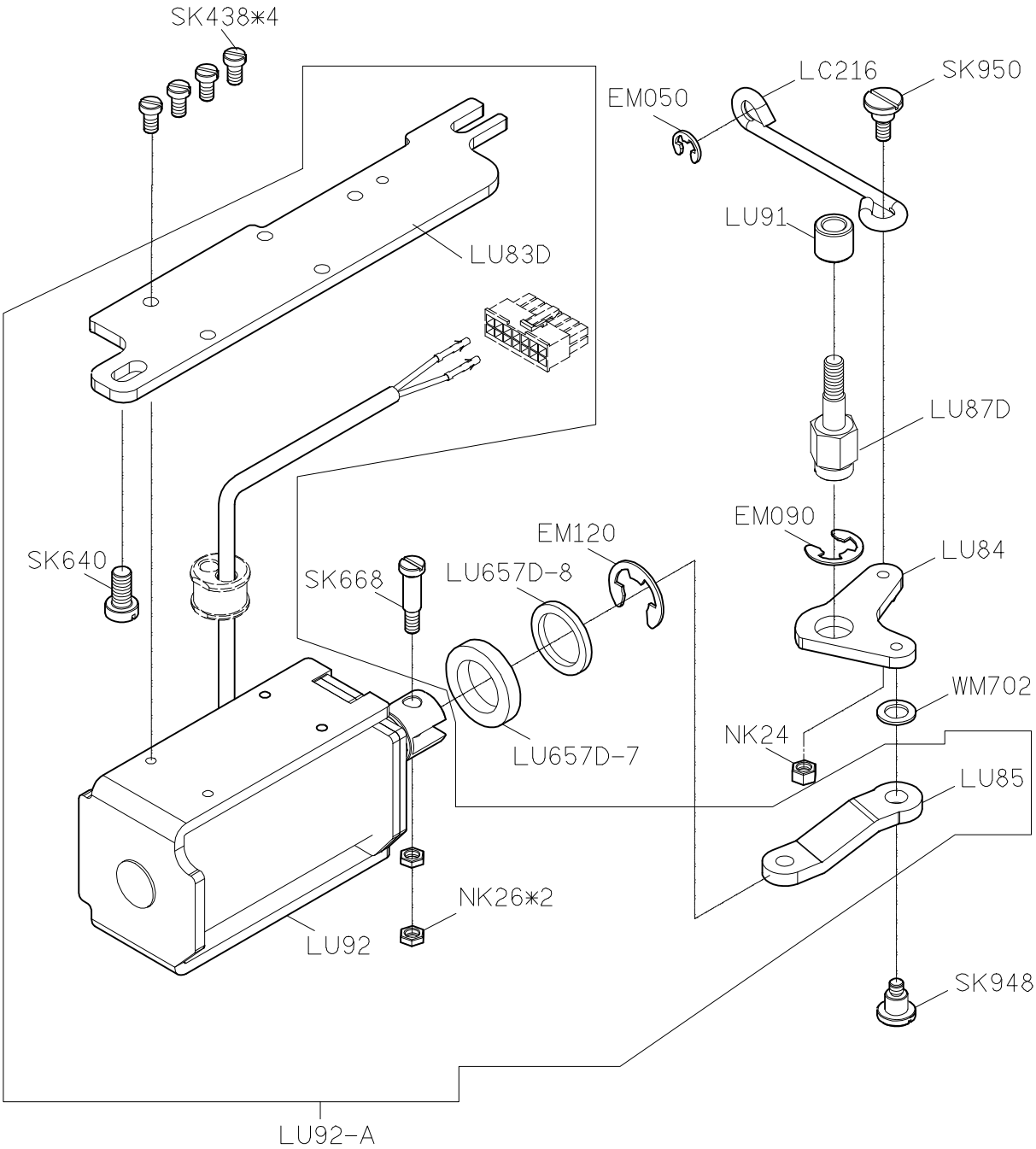
A

B

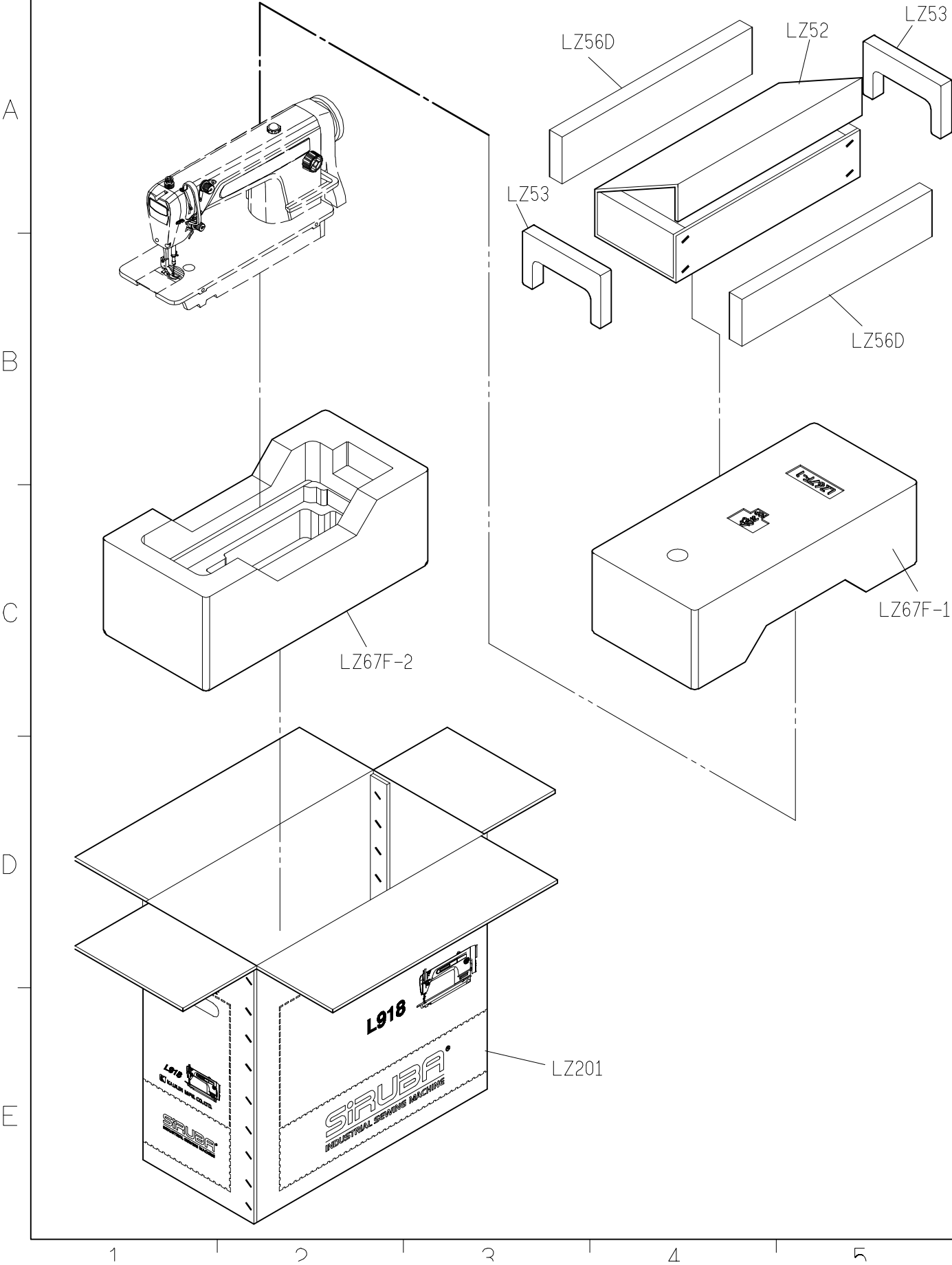
C

D

E



SIRUBA PARTS LIST	Series	Parts Group	Subclass / Remark	Page
	L918U-DM1	LZ		1/1
				Date
				2012/12/22



SiRUBA

TABLE
CUT - OUT

Series

L818D/L818F

L819/L819U

L917/L918/L918U

Item Code

L818-T2

Subclass Remark

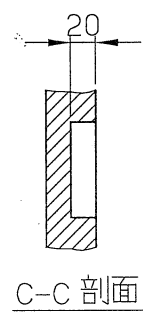
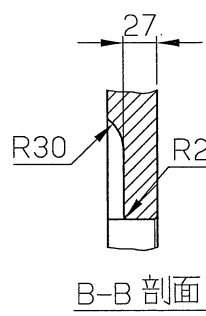
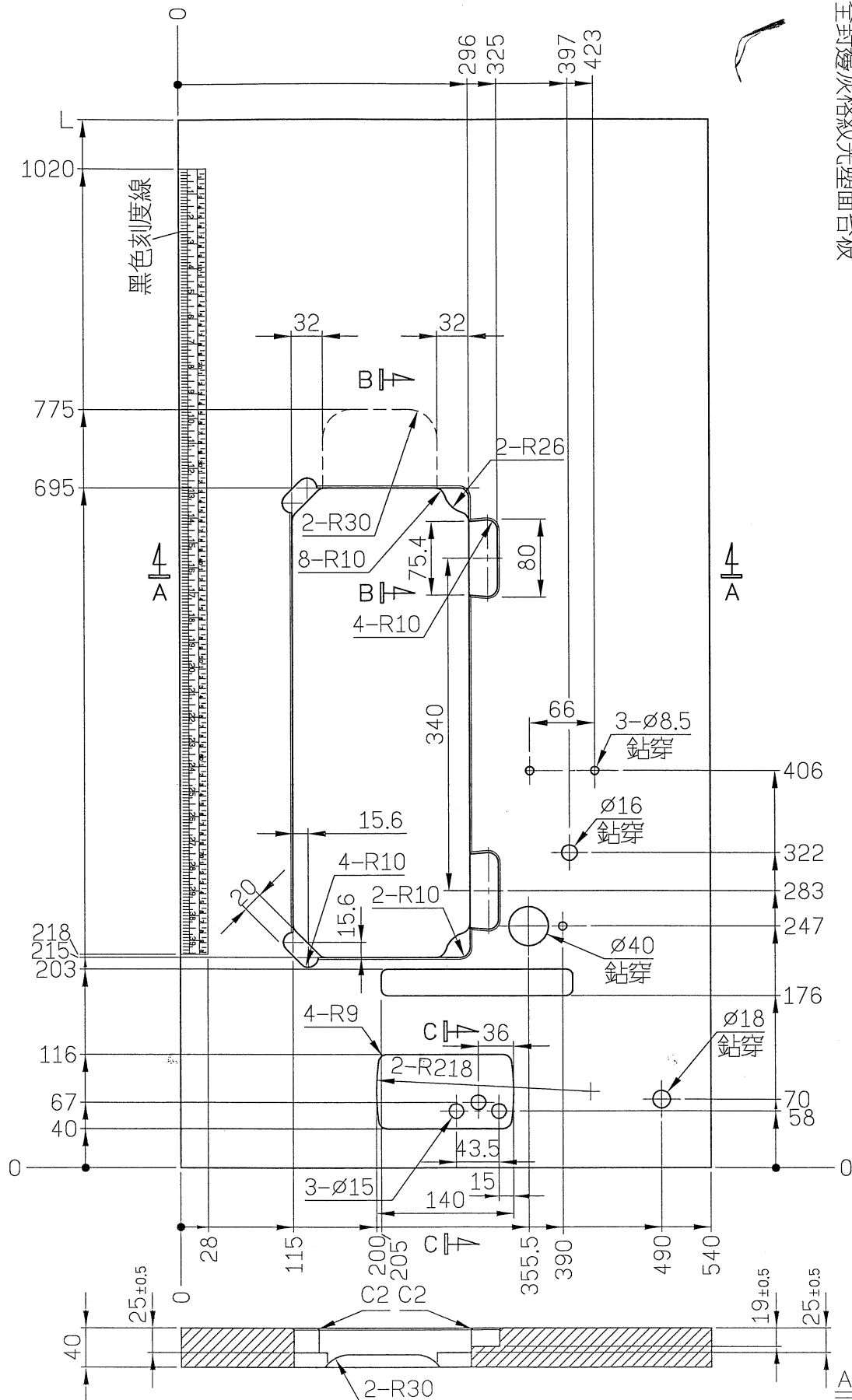
Mounting

Fully-submerged

Date

2016/01/29

單針高速平縫下乘式車板圖
TABLE CUT-OUT SEMI-SUBMERGED
單位/UNIT:mm
所有尺寸公差/DIFFERENCE:±2
L818-T2-1070 長度(L):1070/重量:10kg±5%
L818-T2 長度(L):1200/重量:11.4kg±5%
全封邊灰格紋光塑面台板



A-A 剖面