
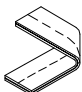
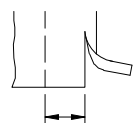
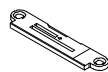
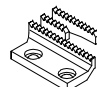




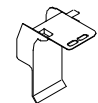


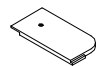


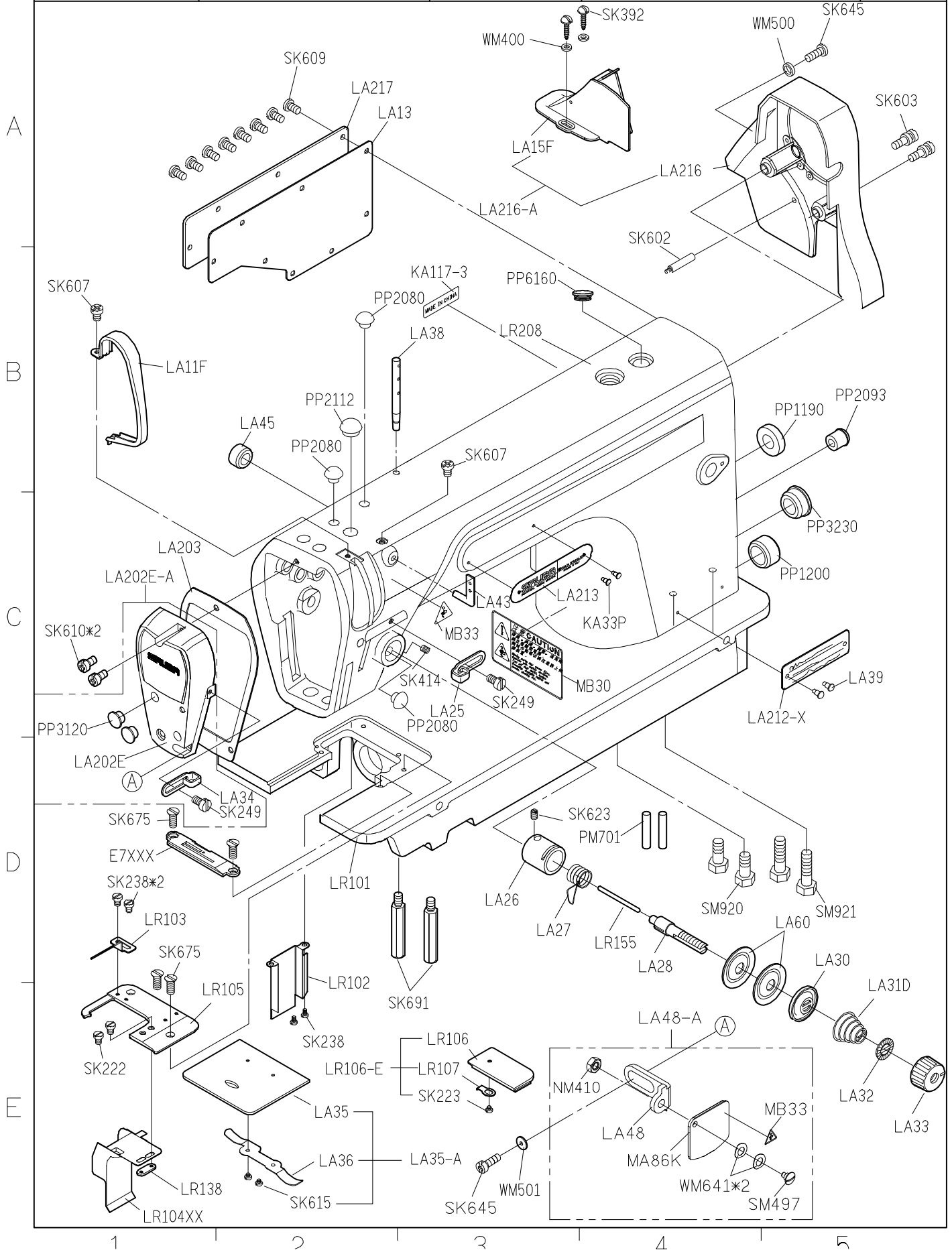
SIRUBA GAGE PARTS LIST	Series	Remark	Page	Date
	L918	RM1	1 / 1	2012/11/01

L918-RM1規格件表 / CONVERSION CHART

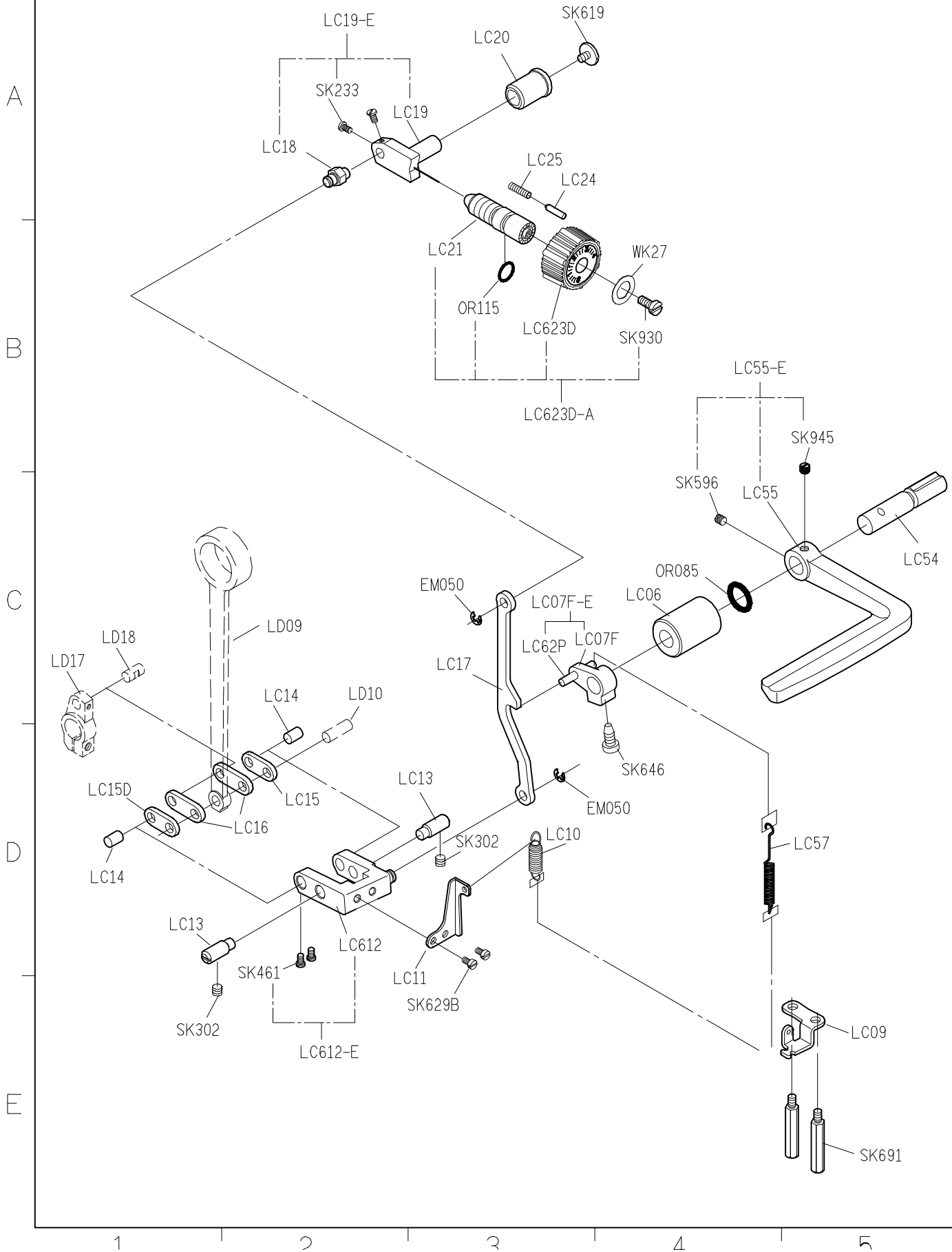
												
MODEL	SUB-CLASS	GAUGE WIDTH	NEEDLE PLATE	FEED DOG	PRESSER FOOT	HOOK ASM	BOBBIN CASE ASM	BOBBIN	THROAT PLATE CHIP GUARD	NEEDLE	THREAD GUIDE	THROAT PLATE COVER
機 型	規 格	切邊距離	針 板	送 具	押 具	梭 頭	梭 殼	梭 子	下導布架	針 號	導線片	布板蓋
L918-RM1-32	32	1/8" (3.2mm)	E705Q	D705	P705	G111	G201	G301	LR104DS	DBX1#14	LR141S	(LR106-E)
L918-RM1-40	40	5/32" (4.0mm)	E705R (E705Q)	D705	P705	G111	G201	G301	LR104DS	DBX1#14	LR141S	(LR106-E)
L918-RM1-48	48	3/16" (4.8mm)	E705 (E705Q)	D705	P705	G111	G201	G301	LR104DS	DBX1#14	LR141S	(LR106-E)
L918-RM1-64	64	1/4" (6.4mm)	E705S (E705Q)	D702 (D705)	P701 (P705)	G111	G201	G301	LR104D (LR104DS)	DBX1#14	LR141S	(LR106-E) (LR106S)
L918-RM1-95	95	3/8" (9.5mm)	E705T (E705Q)	D702 (D705)	P701 (P705)	G111	G201	G301	LR104D (LR104DS)	DBX1#14	LR141S	(LR106-E) (LR106T)

() 之規格件放於夾鏈袋裝于成車箱內, BOM表編與40站。

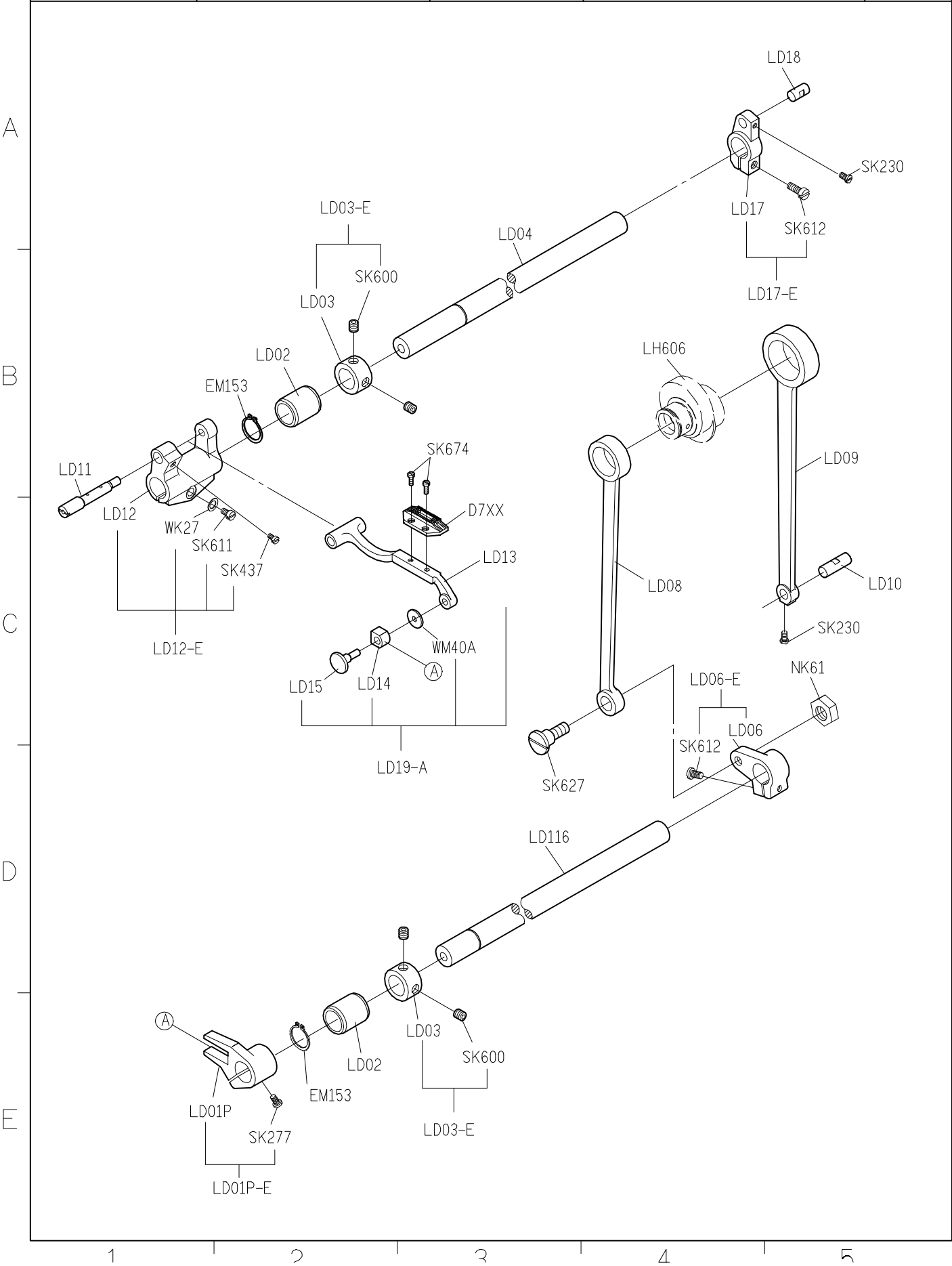
SIRUBA PARTS LIST	Series	Parts Group	Subclass / Remark	Page
	L918-RM1	LA		1/1
				Date
				2015/05/05



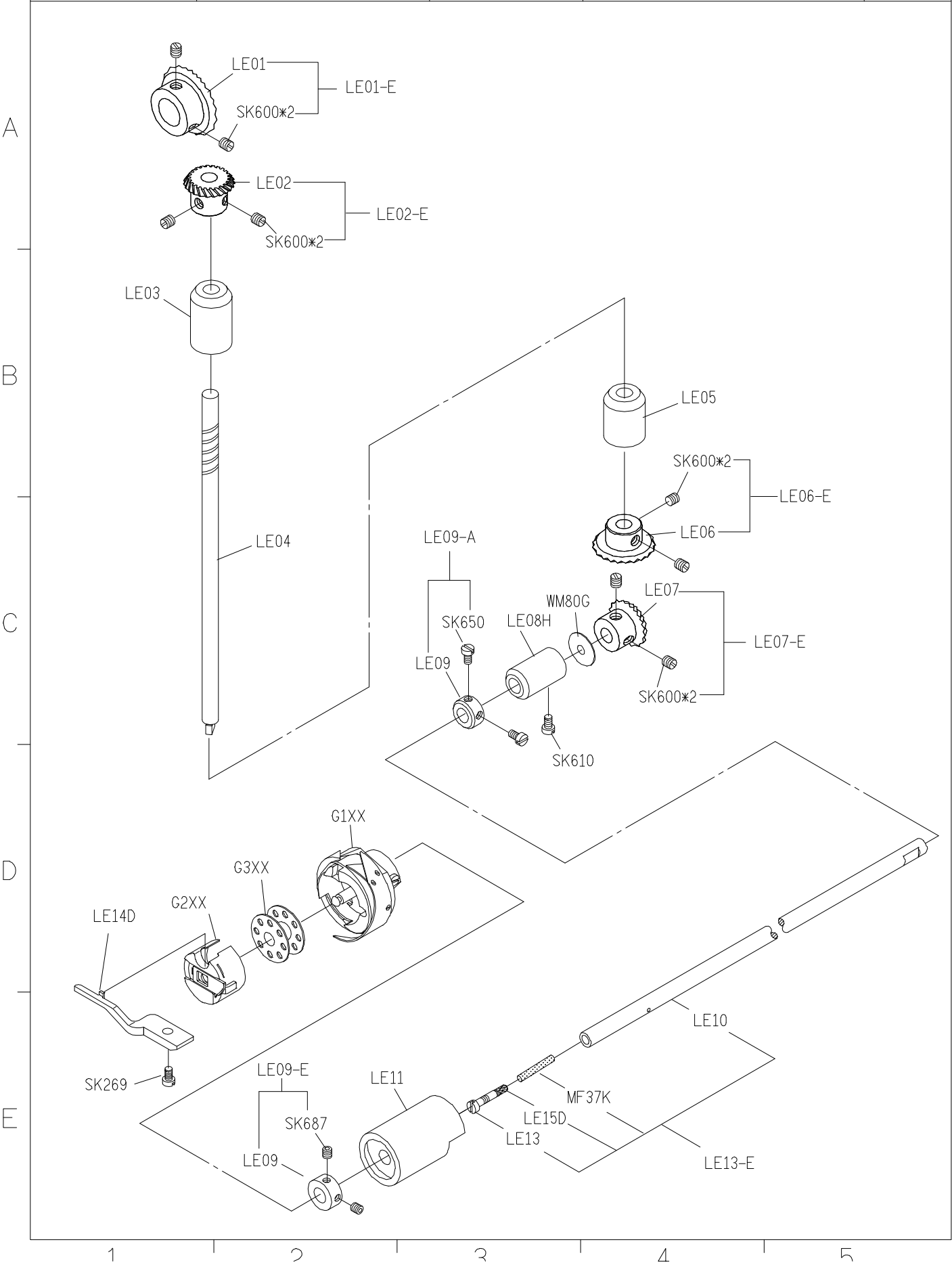
SIRUBA PARTS LIST	Series	Parts Group	Subclass / Remark	Page
	L918-RM1	LC		1/1
				Date
				2015/2/5



SIRUBA PARTS LIST	Series	Parts Group	Subclass / Remark	Page
	L918-RM1	LD		1/1
				Date
				2012/11/01



SIRUBA PARTS LIST	Series	Parts Group	Subclass / Remark	Page
	L918-RM1	LE		1/1
				Date
				2015/07/28



SIRUBA PARTS LIST	Series	Parts Group	Subclass / Remark	Page
	L918-RM1	LG		1/1
				Date
				2012/11/01

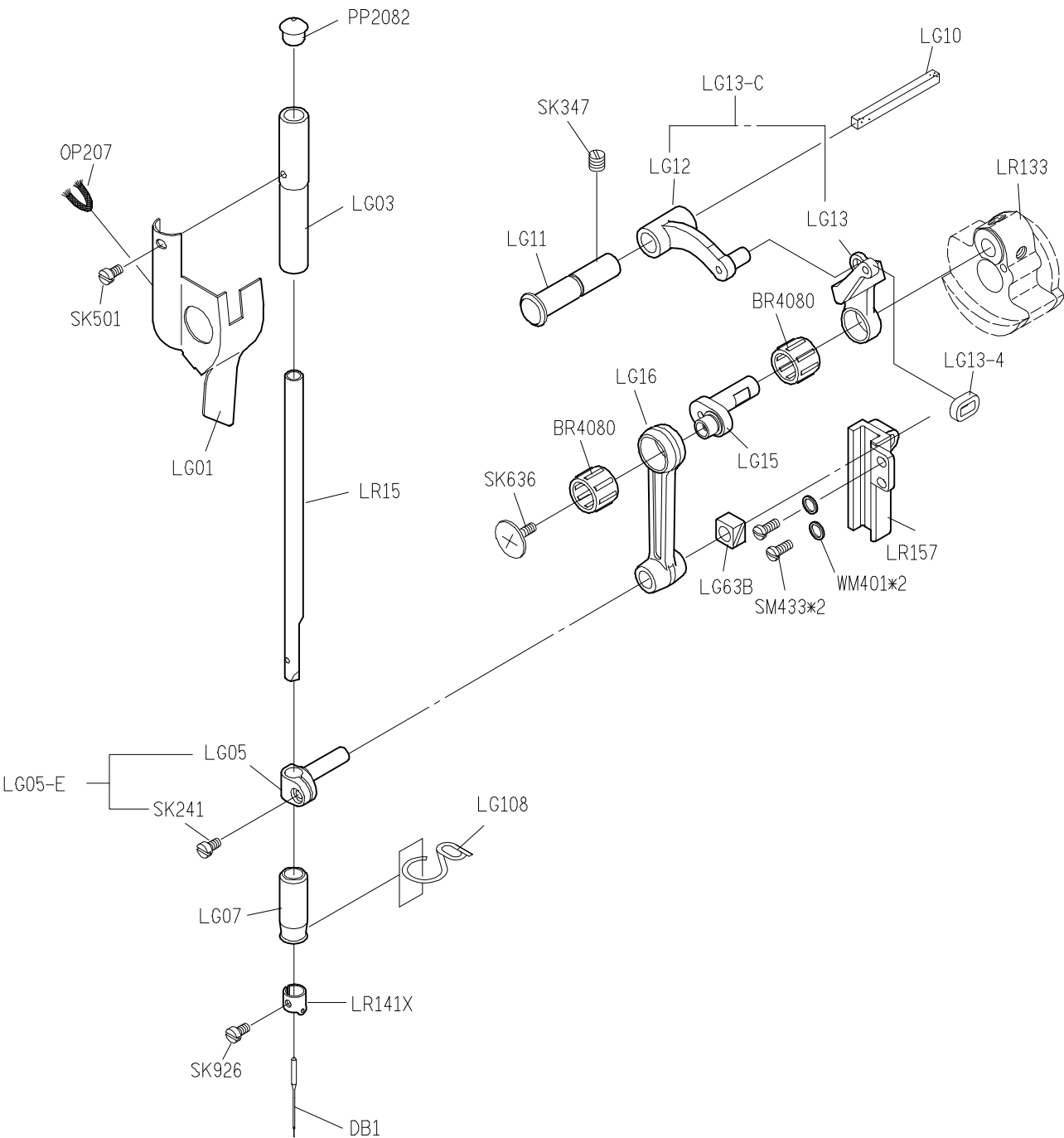
A

B

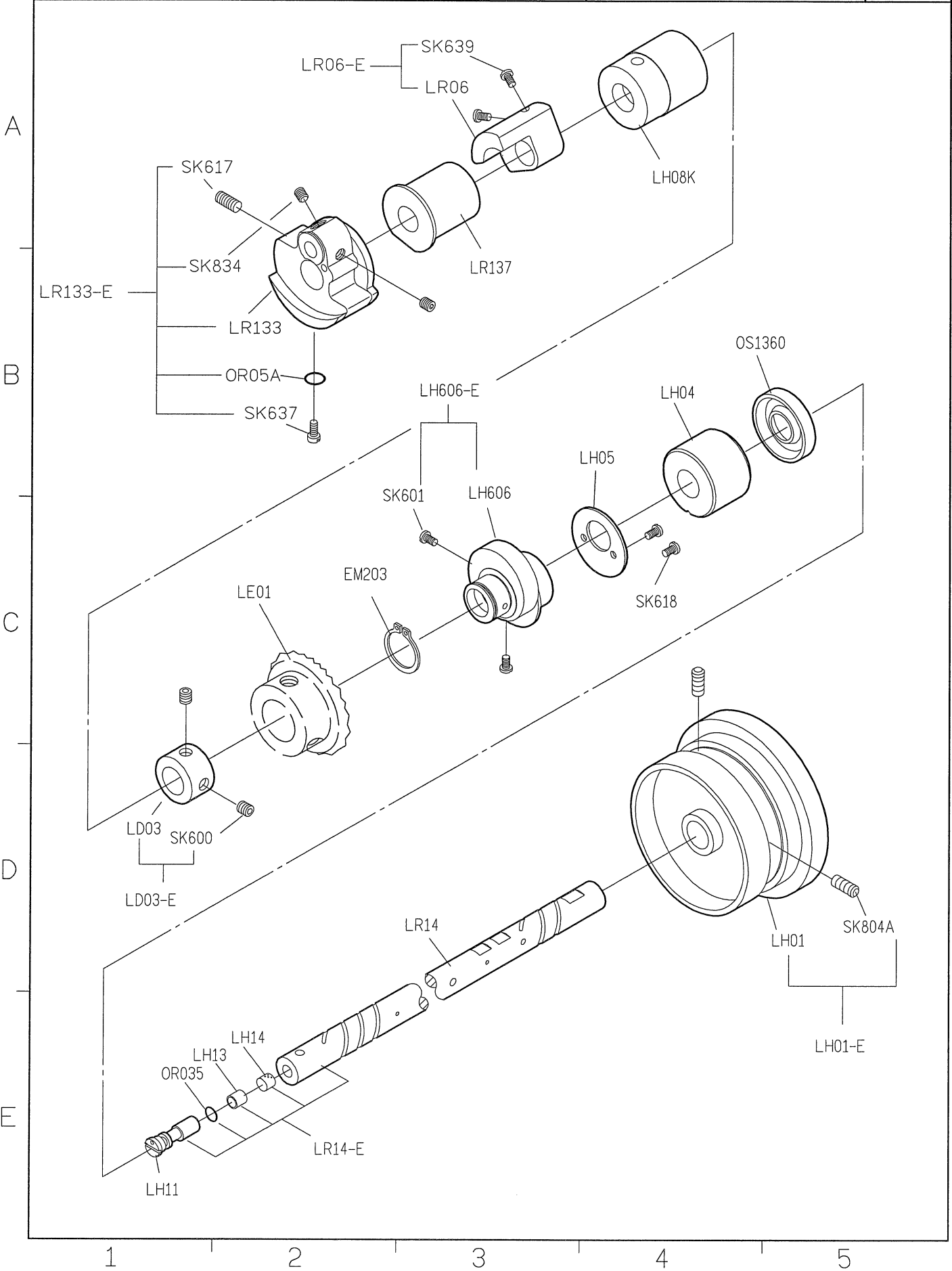
C

D

E



SIRUBA PARTS LIST	Series	Parts Group	Subclass / Remark	Page
	L918-RM1	LH		1/1
				Date
				2015/11/03



<div> <div>SIRUBA</div> <div>PARTS LIST</div> </div>	Series	Parts Group	Subclass / Remark	Page
	L918-RM1	LL		1/1
				Date
				2015/03/24

Diagram illustrating the exploded view of the LL series pump assembly (L918-RM1). The assembly includes various components labeled with part numbers and letters A through F.

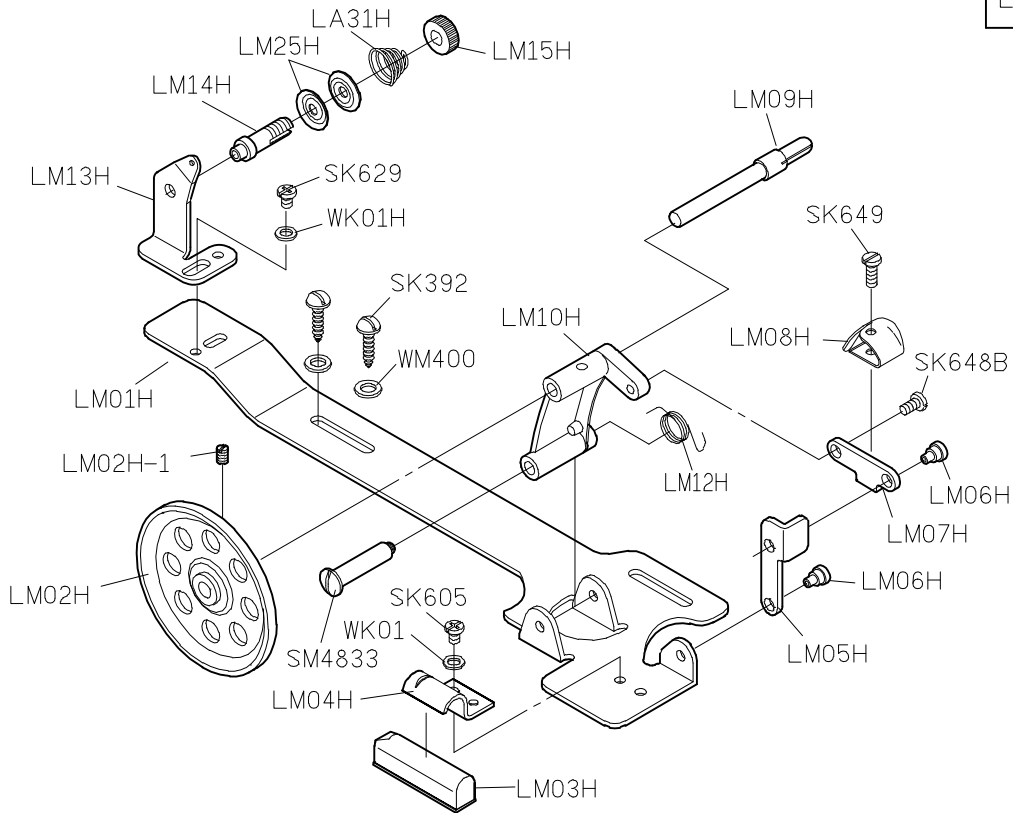
Key components and labels include:

- SK639**, **LL09**, **LL10**, **SK634**, **SK628**, **LL16D**, **LL17**, **LL01F**, **KC58**, **LL19**, **ALT087S**, **LL15**, **SM384**, **LL11**, **LL28**, **LL13**, **LL14**, **SK647**, **LL18**, **LL04-4**, **LL102**, **LL11-A1**, **LR49**, **SM437**, **WM400**, **OP222**, **LL04-3**, **LL100**, **LL03**, **SK625**, **LL04-1**, **SK392**, **KX12E**, **KX13E**, **LL22**, **LL23**, **OP214**, **SK606**, **OR10C**, **LL06**, **SK630**, **LL07**, **LM22**, **LM23**, **EM100**, **SM607**, **NM610**, **SM697**, **LM24**, **LM21**, **LR48**, **LR46**, **SK630**.

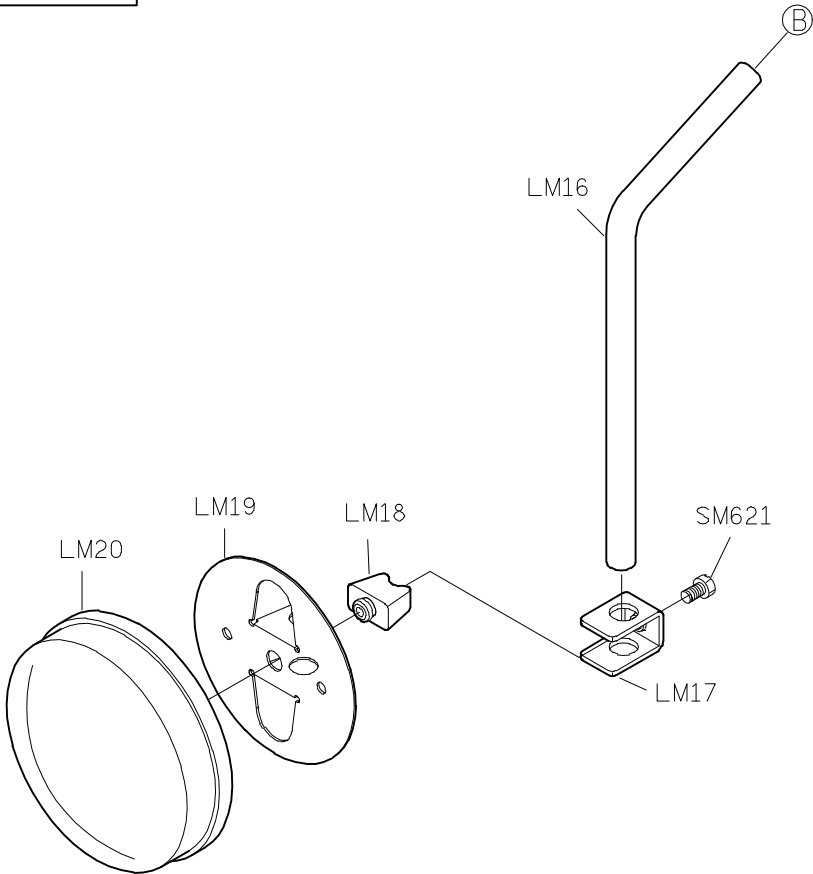
The diagram is divided into five horizontal sections labeled A, B, C, D, and E.

SIRUBA PARTS LIST	Series	Parts Group	Subclass / Remark	Page
	L918-RM1	LM		1/1
				Date
				2012/11/01

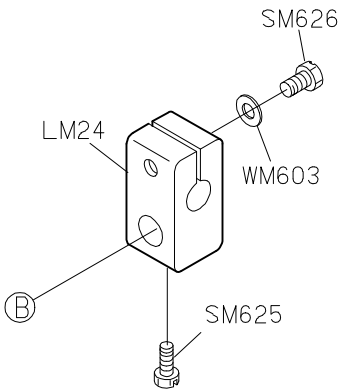
LM01H-A



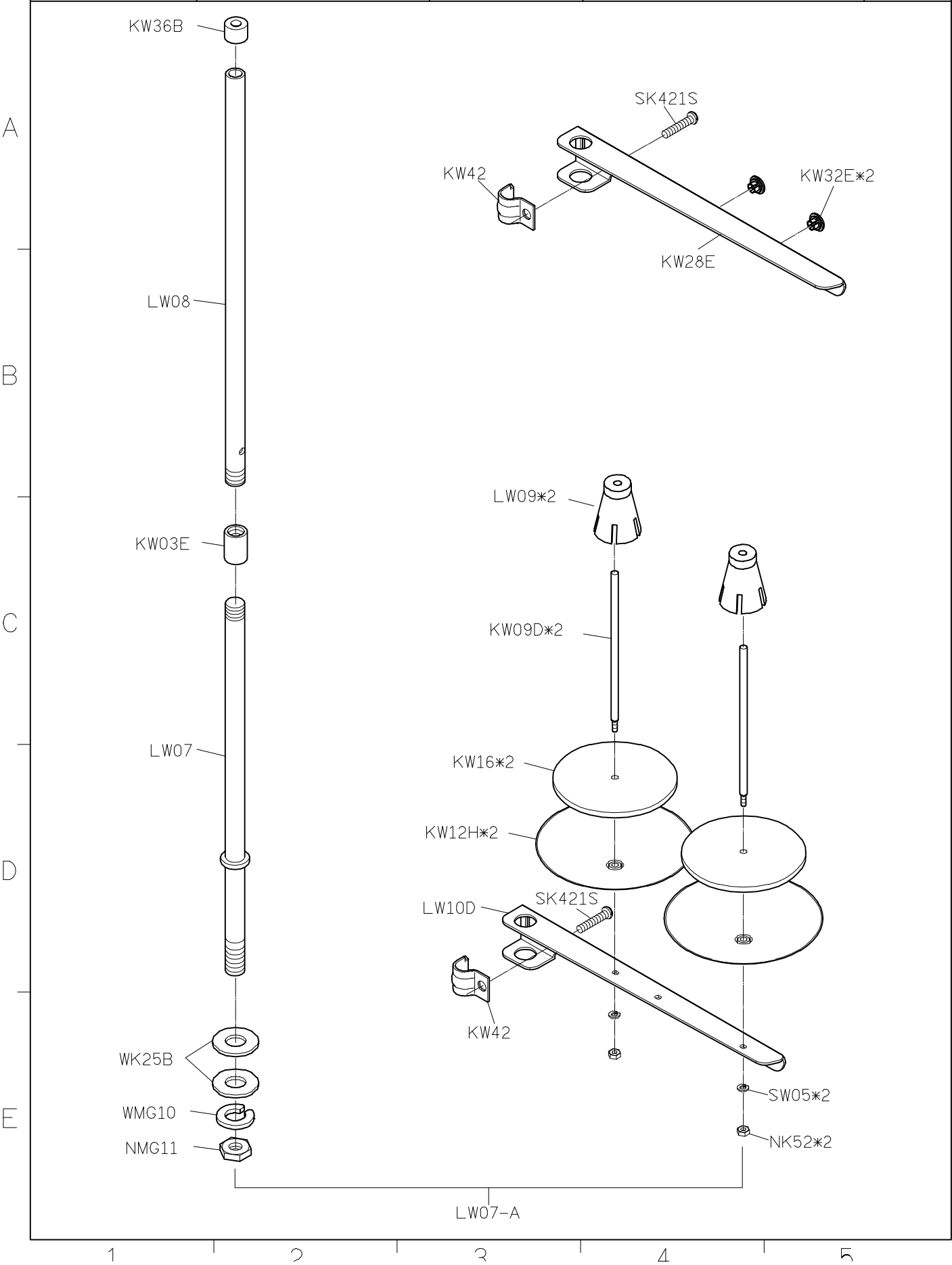
LM20-A



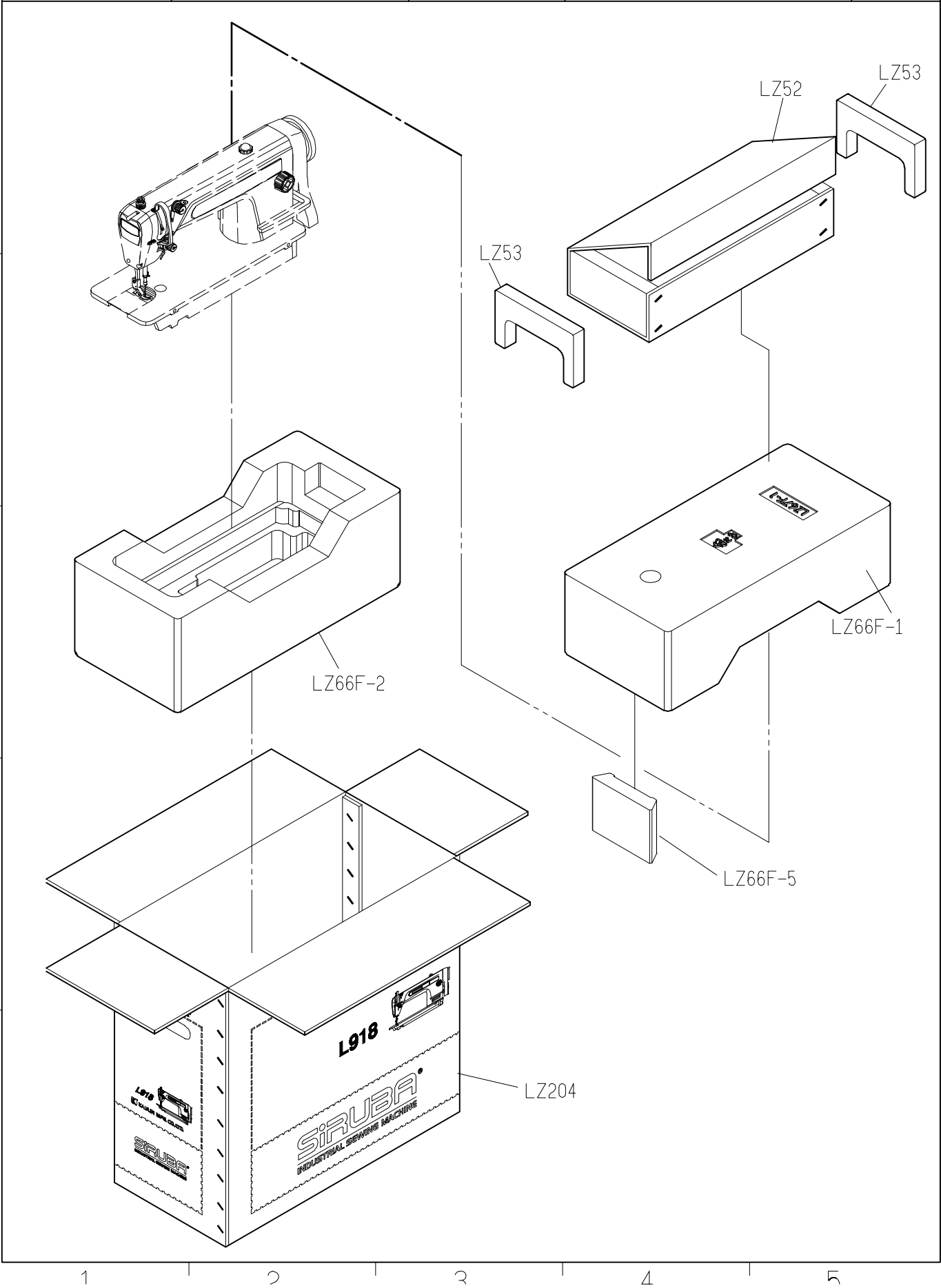
LM24-E



SIRUBA PARTS LIST	Series	Parts Group	Subclass / Remark	Page
	L918-RM1	LW		1/1
				Date
				2013/04/10



SIRUBA PARTS LIST	Series	Parts Group	Subclass / Remark	Page
	L918-RM1	LZ		1/1
				Date
				2012/11/01



SiRUBA

TABLE
CUT - OUT

Series

L818D/L818F

L819/L819U

L917/L918/L918U

Item Code

L818-T2

Subclass Remark

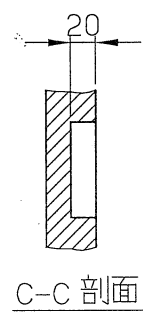
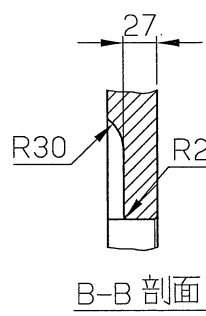
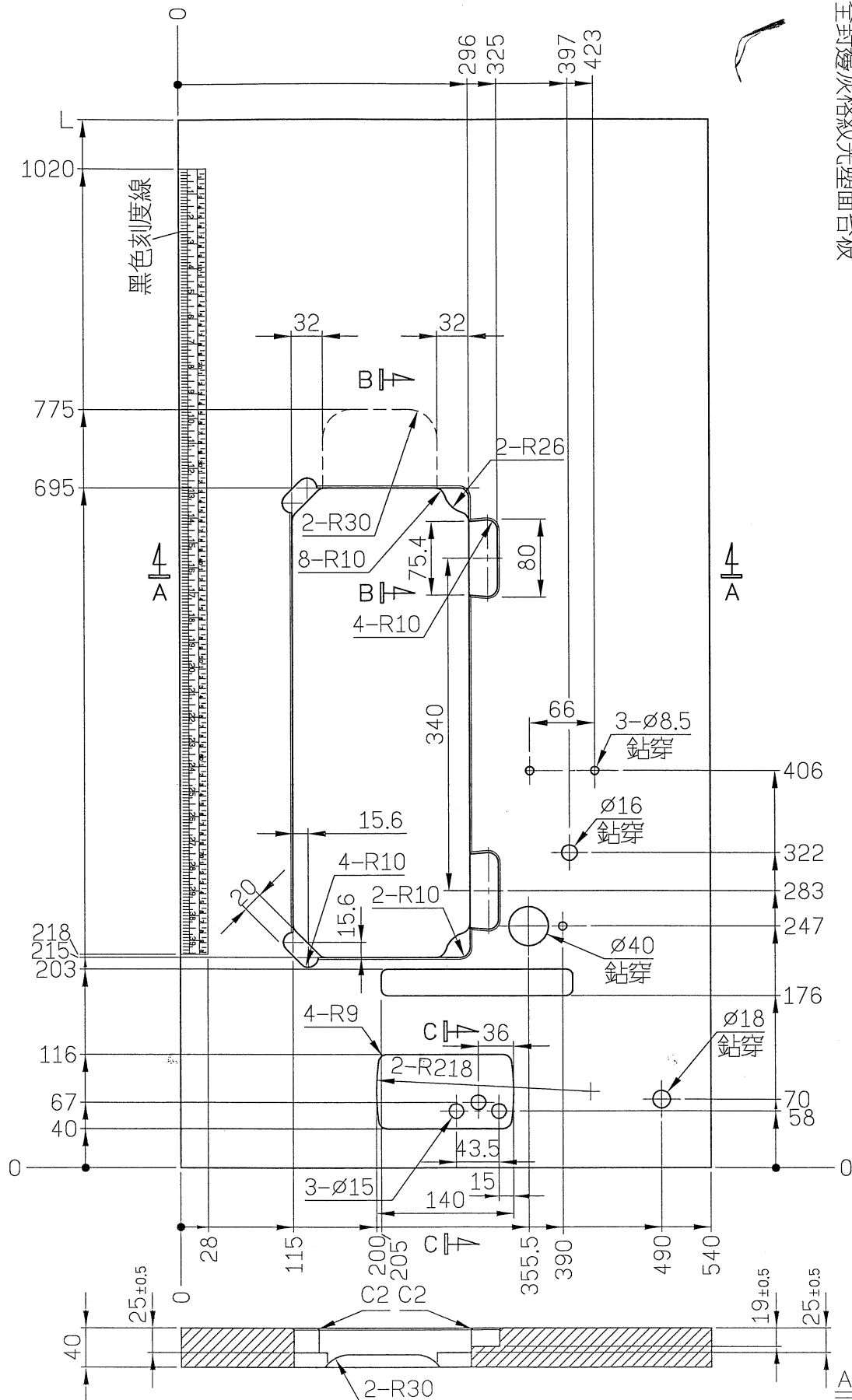
Mounting

Fully-submerged

Date

2016/01/29

單針高速平縫下乘式車板圖
TABLE CUT-OUT SEMI-SUBMERGED
單位/UNIT:mm
所有尺寸公差/DIFFERENCE:±2
L818-T2-1070 長度(L):1070/重量:10kg±5%
L818-T2 長度(L):1200/重量:11.4kg±5%
全封邊灰格紋光塑面台板



A-A 剖面