

SIRUBA

PARTS LIST

Series

700KT

Parts Group

CT-KT

Subclass / Remark

Page

1/1

Date

2023/10/24

MODEL	X-3	other
PARTS NO	CT216T	CT213T
PARTS NO	CTK-A6	CTK-A5

SiRUBA PARTS LIST	Series	Parts Group	Subclass / Remark	Page
	700K/700KD 988/988D 700KT	GA-K		1/1
				Date
				2017/09/15

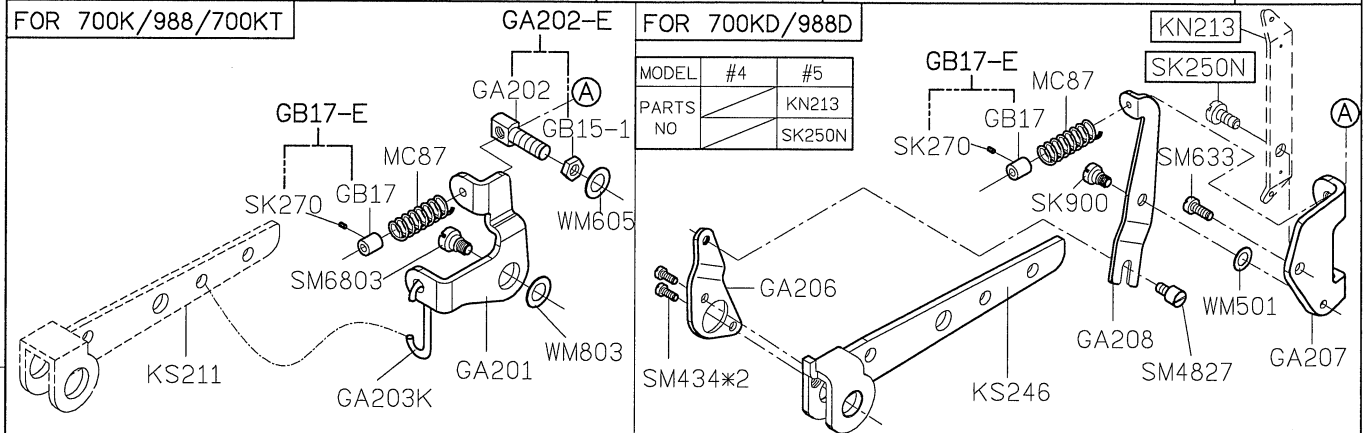
FOR 700K/988/700KT

GA202-E

FOR 700KD/988D

MODEL	#4	#5
PARTS NO	KN213	SK250N

A



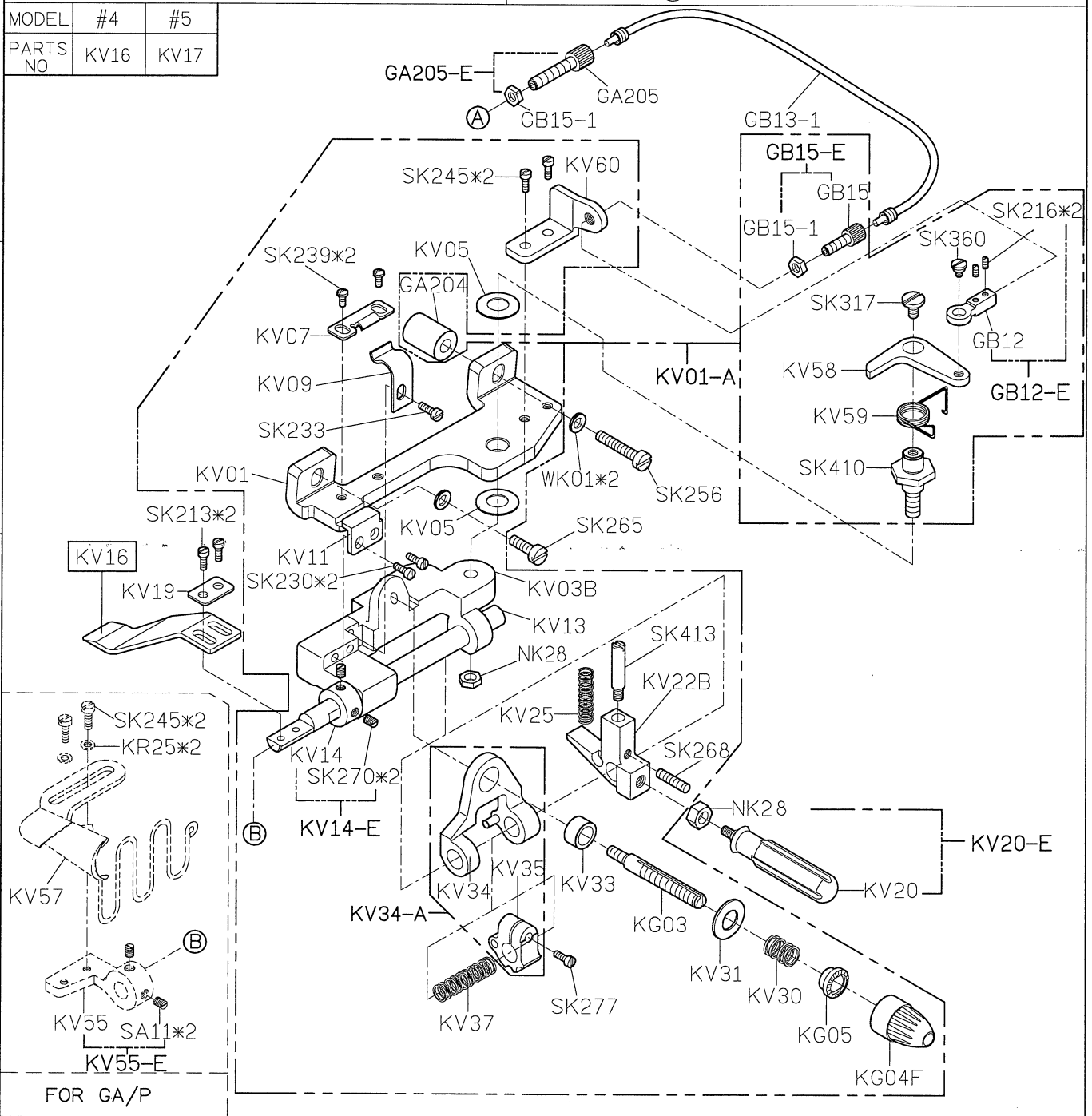
MODEL	#4	#5
PARTS NO	KV16	KV17

B

C

D

E



FOR GA/P

1

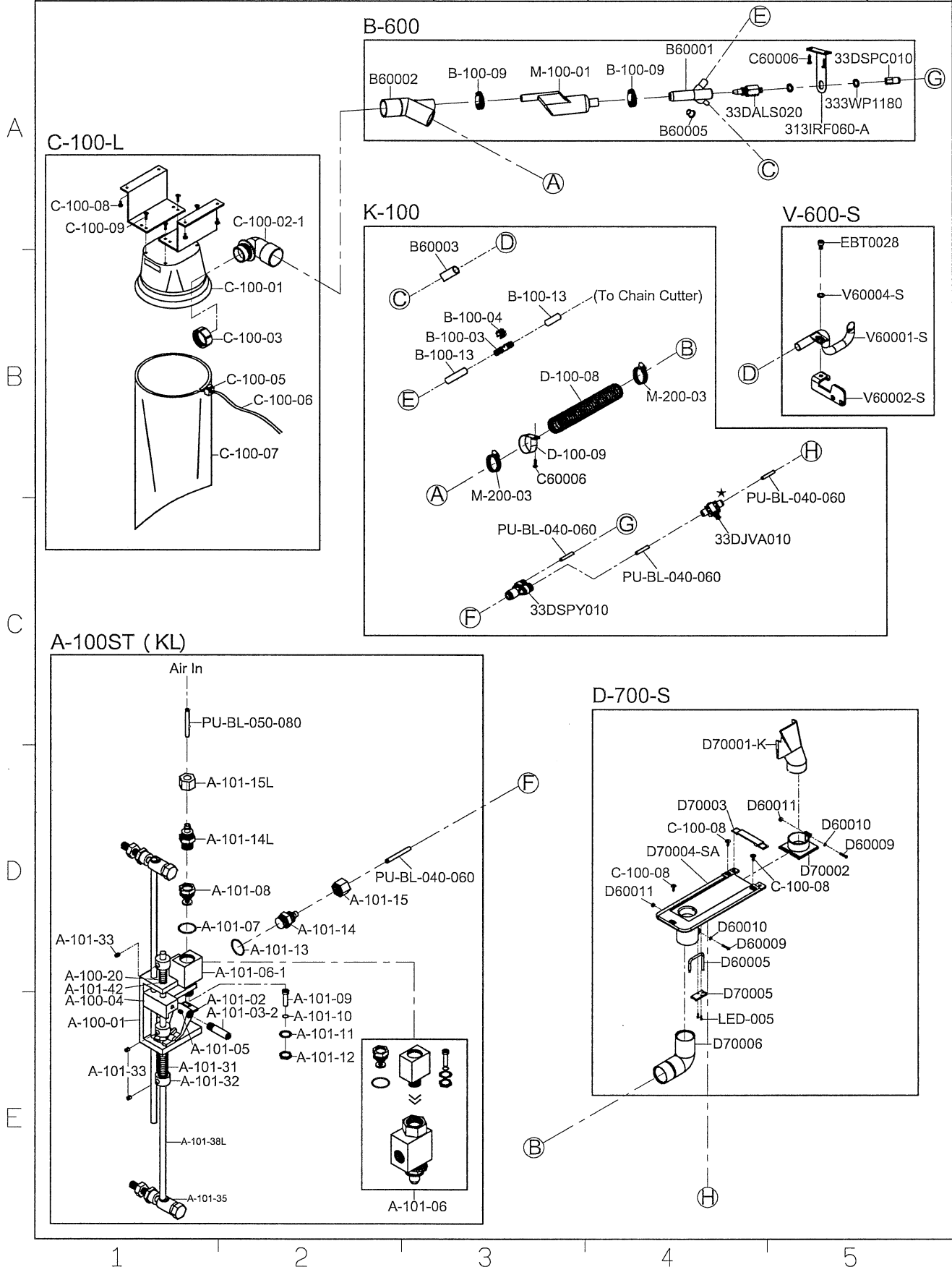
2

3

4

5

SiRUBA PARTS LIST	Series	Parts Group	Subclass / Remark	Page
	拷克 Overlock	TUA-31	Note 註記: 1) ★ Before installation, please check one side is Air IN, another side is Air OUT. 2) 空氣有效使用壓力 Effective air pressure: 4~6 kg/cm 3) 請適度修剪管子長度，以達到風力最佳效能。	1/1
				Date 2016/11/02



SIRUBA

PARTS LIST

Series

700KT

Parts Group

TUA-32KT

Subclass / Remark

Note 註記:

- 1) ★ Before installation, please check one side is Air IN, another side is Air OUT.
- 2) 空氣有效使用壓力
Effective air pressure: 4~6 kg/cm
- 3) 請適度修剪管子長度，以達到風力最佳效能。

Page

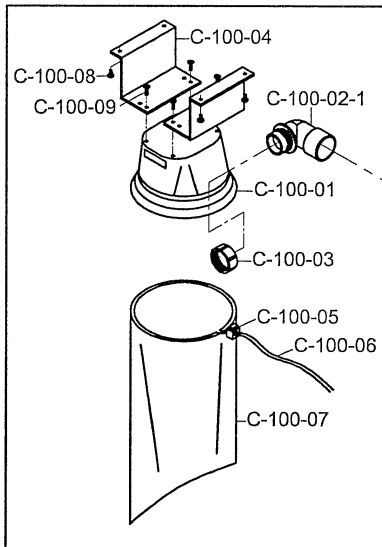
1/1

Date

2016/11/02

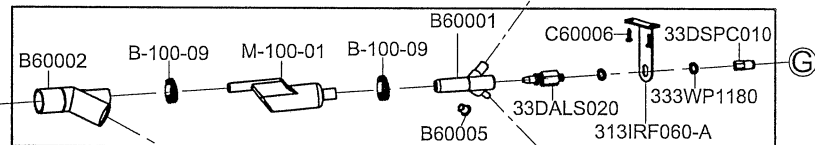
A

C-100-L

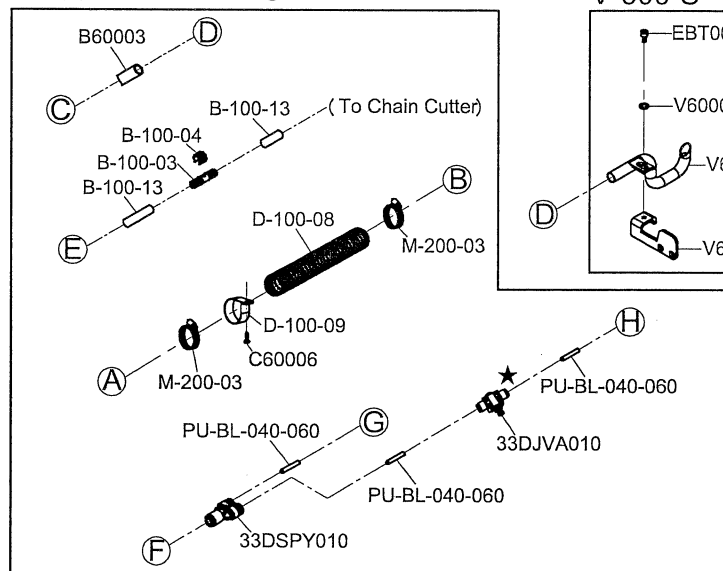


B

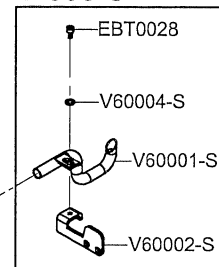
B-600



K-100

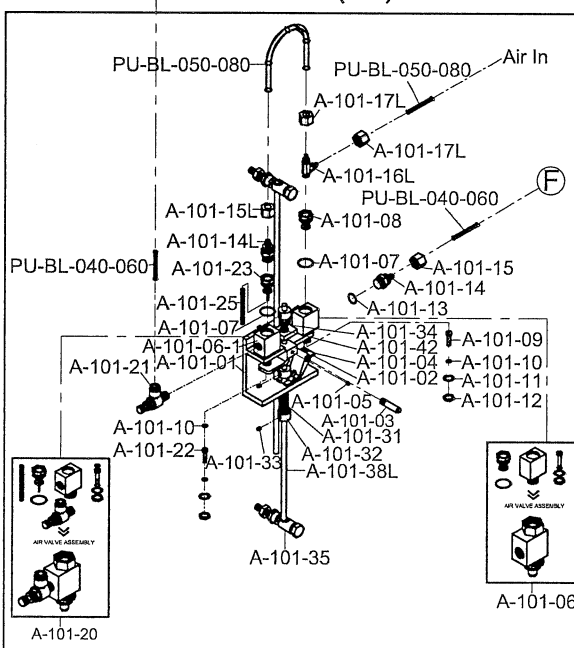


V-600-S



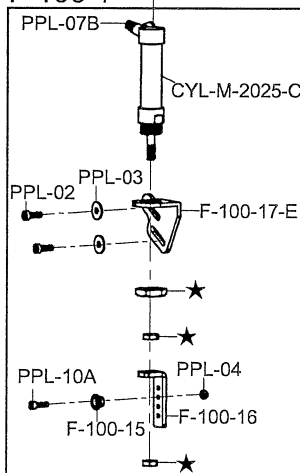
C

A-101ST (KL)

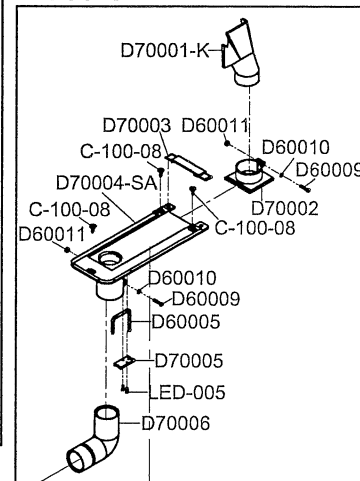


D

F-100-T



D-700-S



E

1

2

3

4

5

SIRUBA PARTS LIST	Series	Parts Group	Subclass / Remark	Page
	700KT	TUA-34KT	Note 註記: 1) ★ Before installation, please check one side is Air IN, another side is Air OUT. 2) 空氣有效使用壓力 Effective air pressure: 4~6 kg/cm 3) 請適度修剪管子長度，以達到風力最佳效能。	1/1
				Date 2016/11/02

