

SIRUBA

PARTS LIST

Series

700Qe/988Qe

Parts Group

BKS-A2

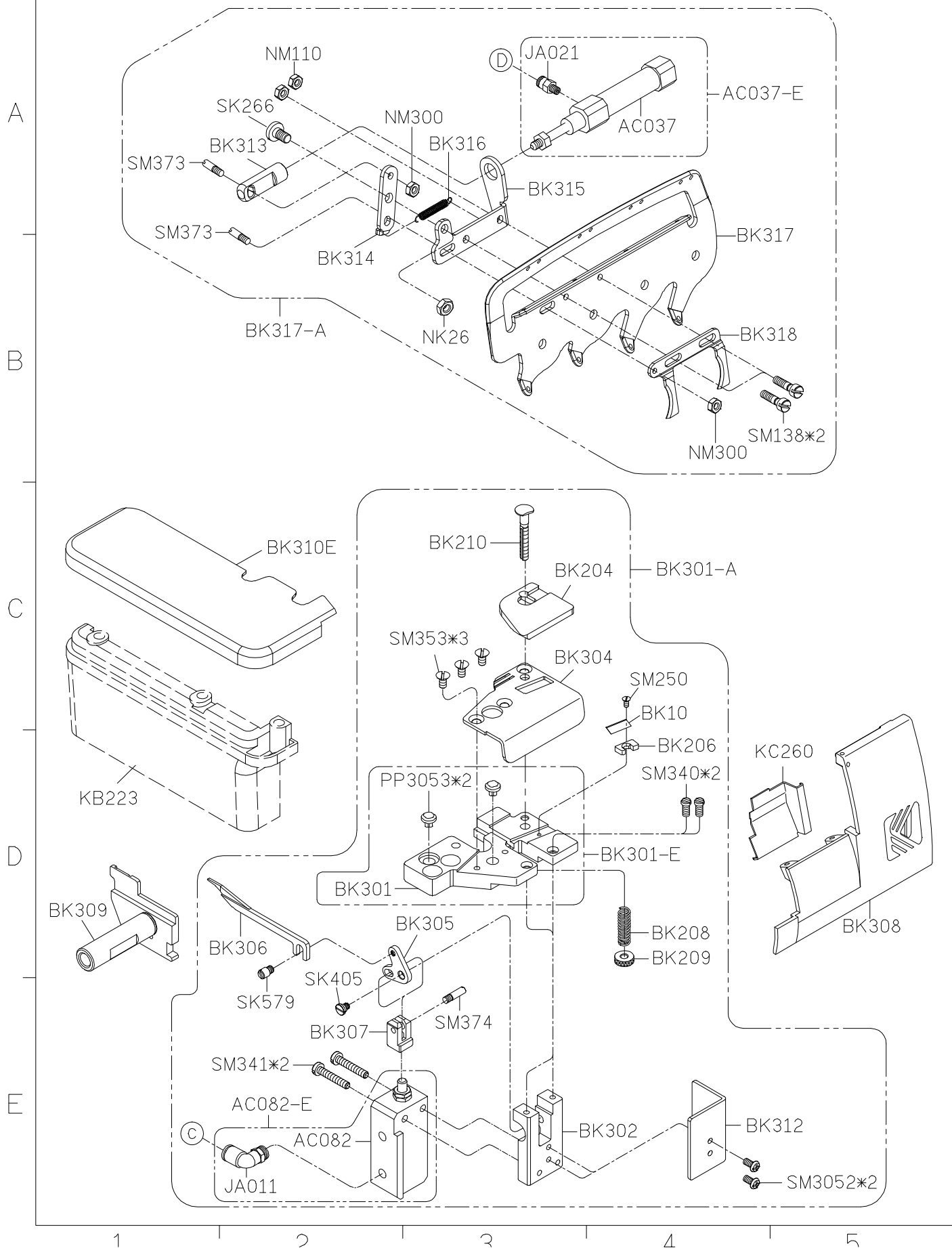
Subclass / Remark

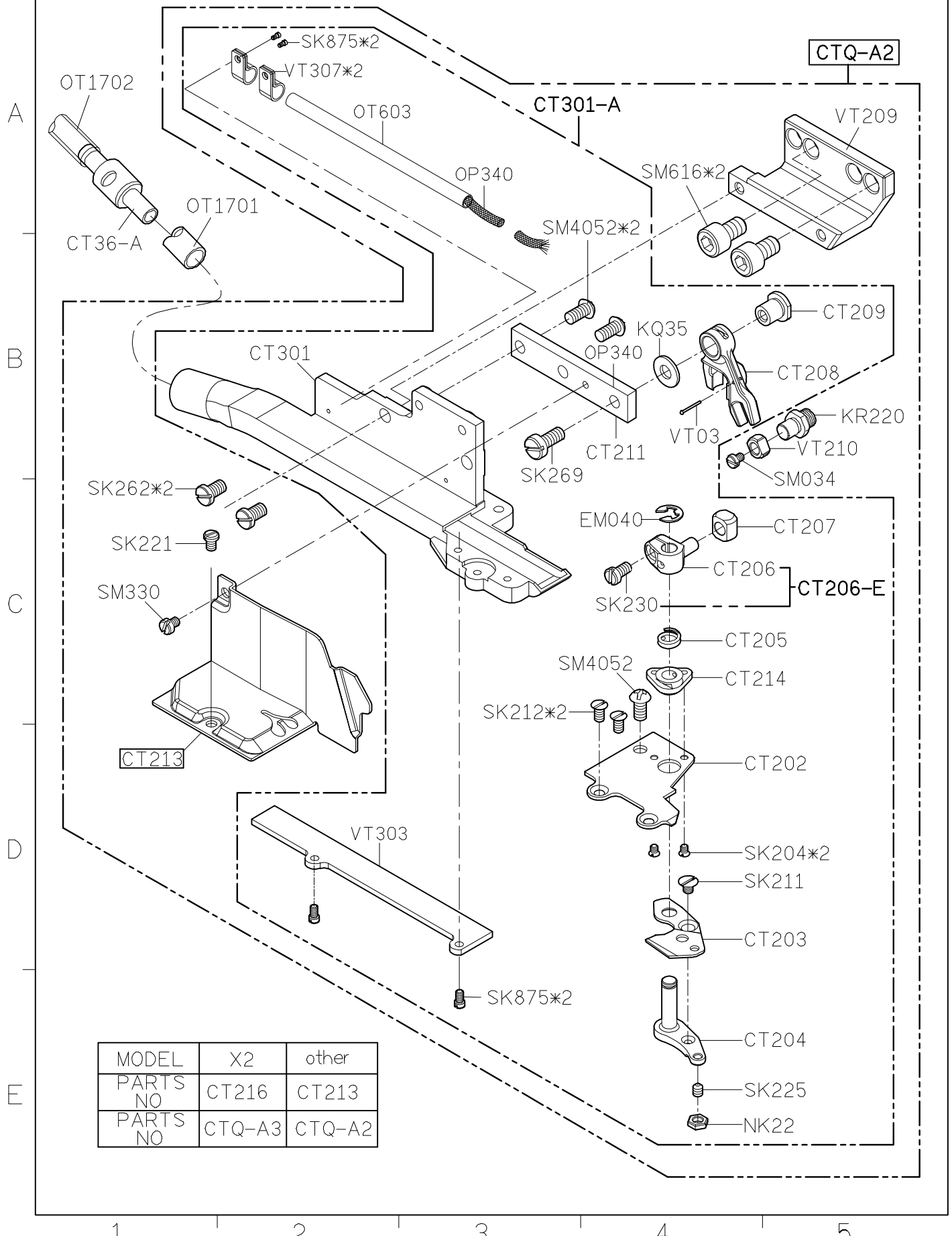
Page

1/2

Date

2015/03/09



SIRUBA**PARTS LIST****Series****700K/988K/700KD/988KD
700Q/988Q/700Qe/988Qe****Parts Group****CT-Q****Subclass / Remark****Page****1/1****Date****2014/04/30**

SIRUBA PARTS LIST	Series	Parts Group	Subclass Remark	Page
	700K/700Qe 988/988Qe	PZ-K		1/1
				Date
				2013/03/11

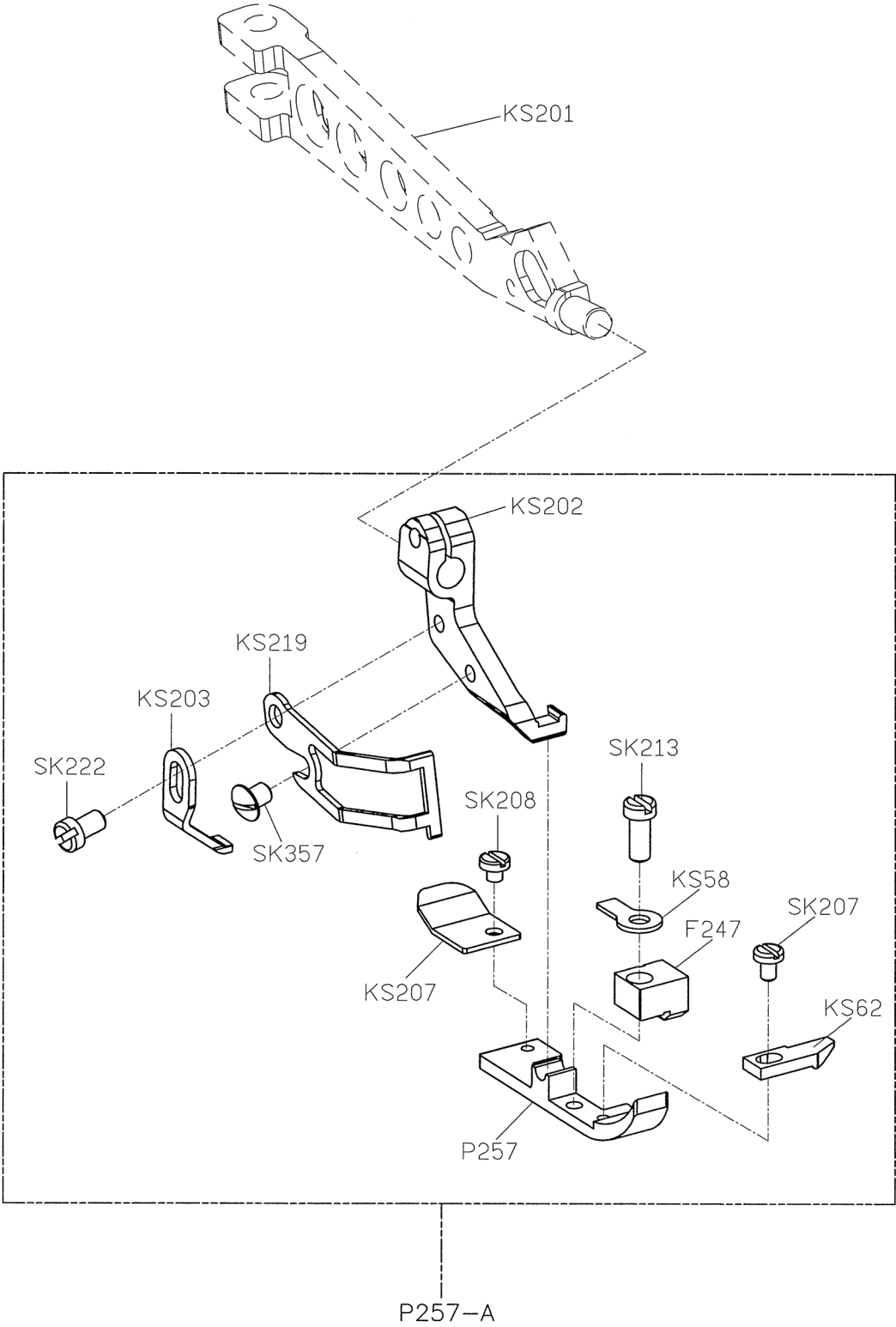
A

B

C

D

E



SiRUBA PARTS LIST	Series	Parts Group	Subclass / Remark	Page
	拷克 Overlock	TUA-31	Note 註記: 1) ★ Before installation, please check one side is Air IN, another side is Air OUT. 2) 空氣有效使用壓力 Effective air pressure: 4~6 kg/cm 3) 請適度修剪管子長度，以達到風力最佳效能。	1/1
				Date 2016/11/02

